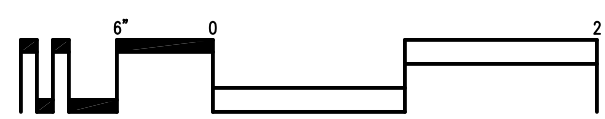
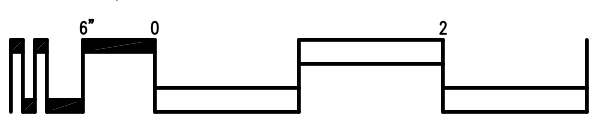


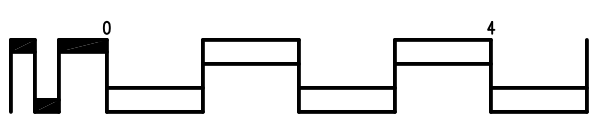
one inch = one foot



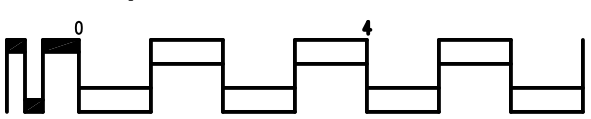
three-quarters inch = one foot



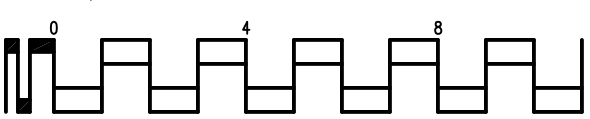
one-half inch = one foot



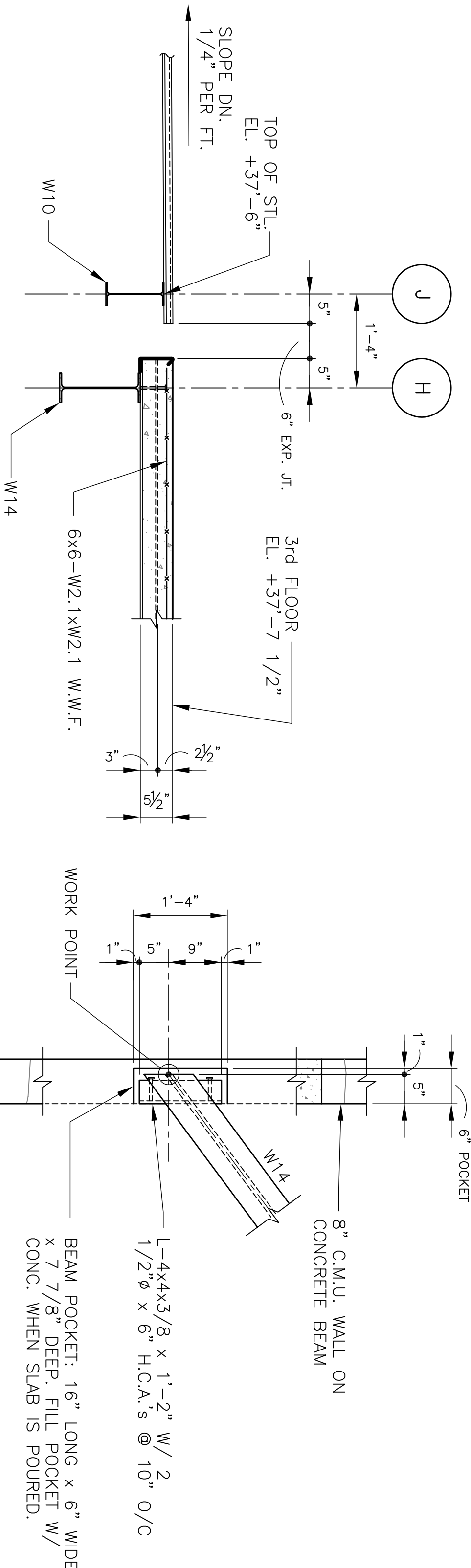
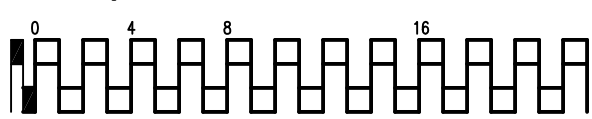
three-eighths inch = one foot



one-quarter inch = one foot

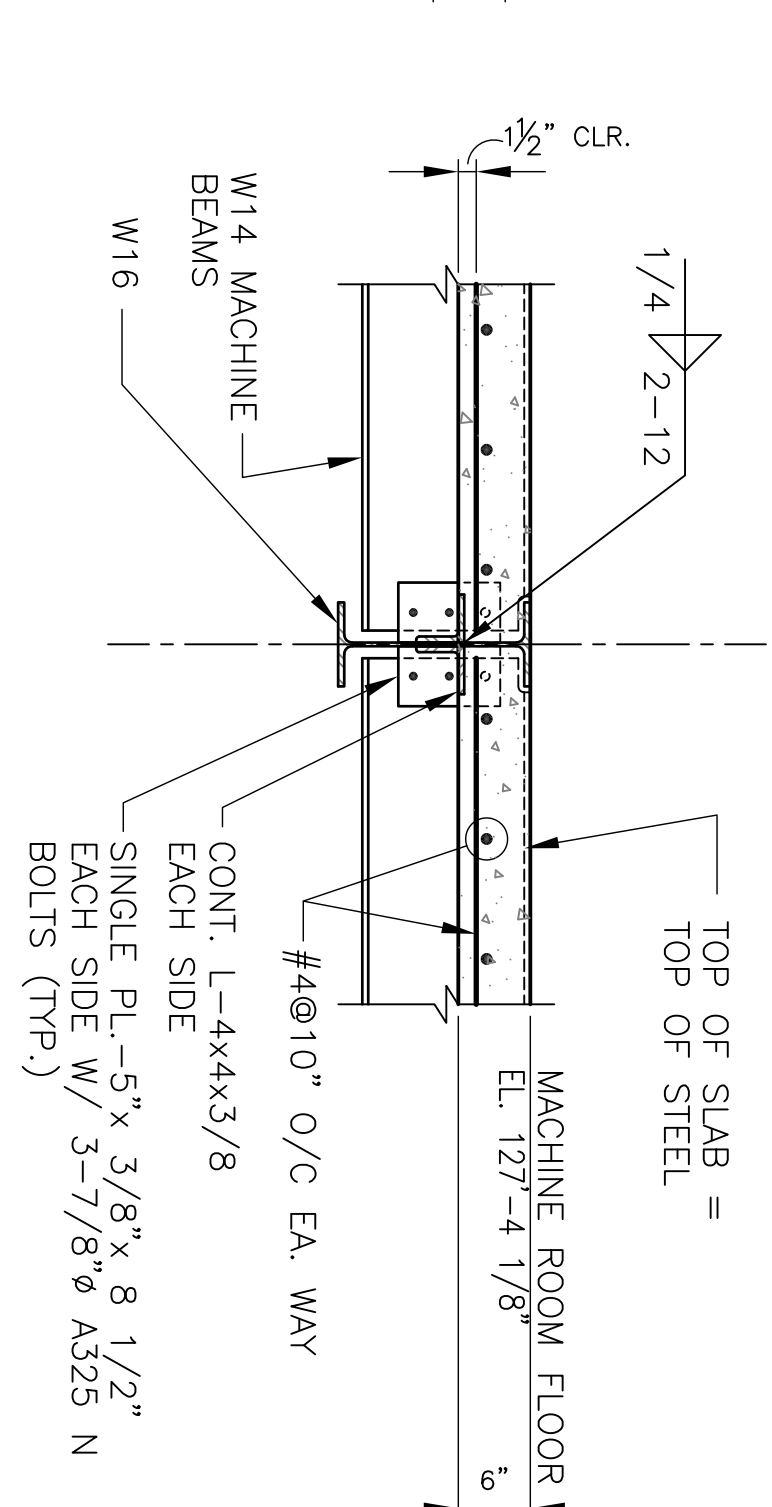
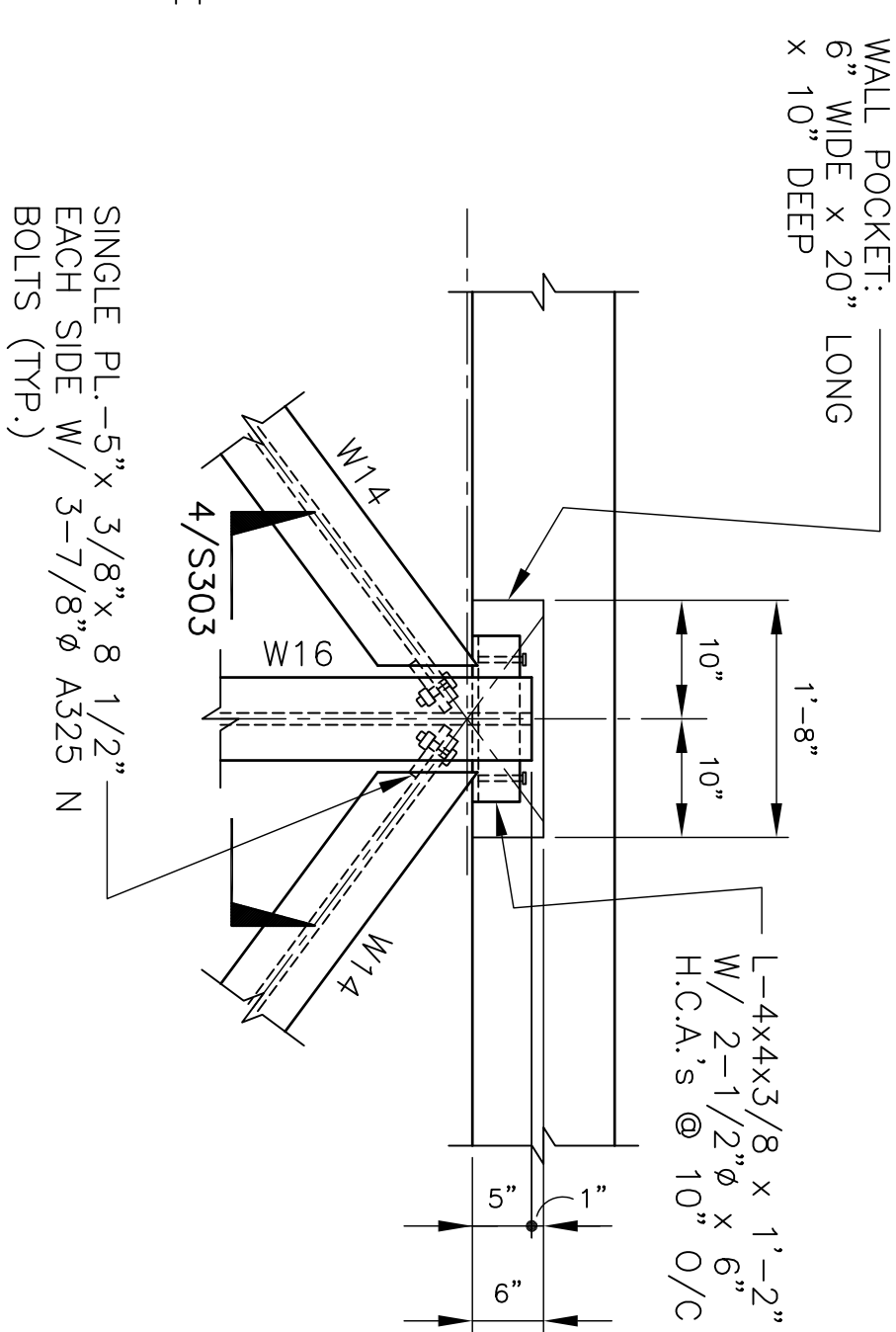


one-eighth inch = one foot

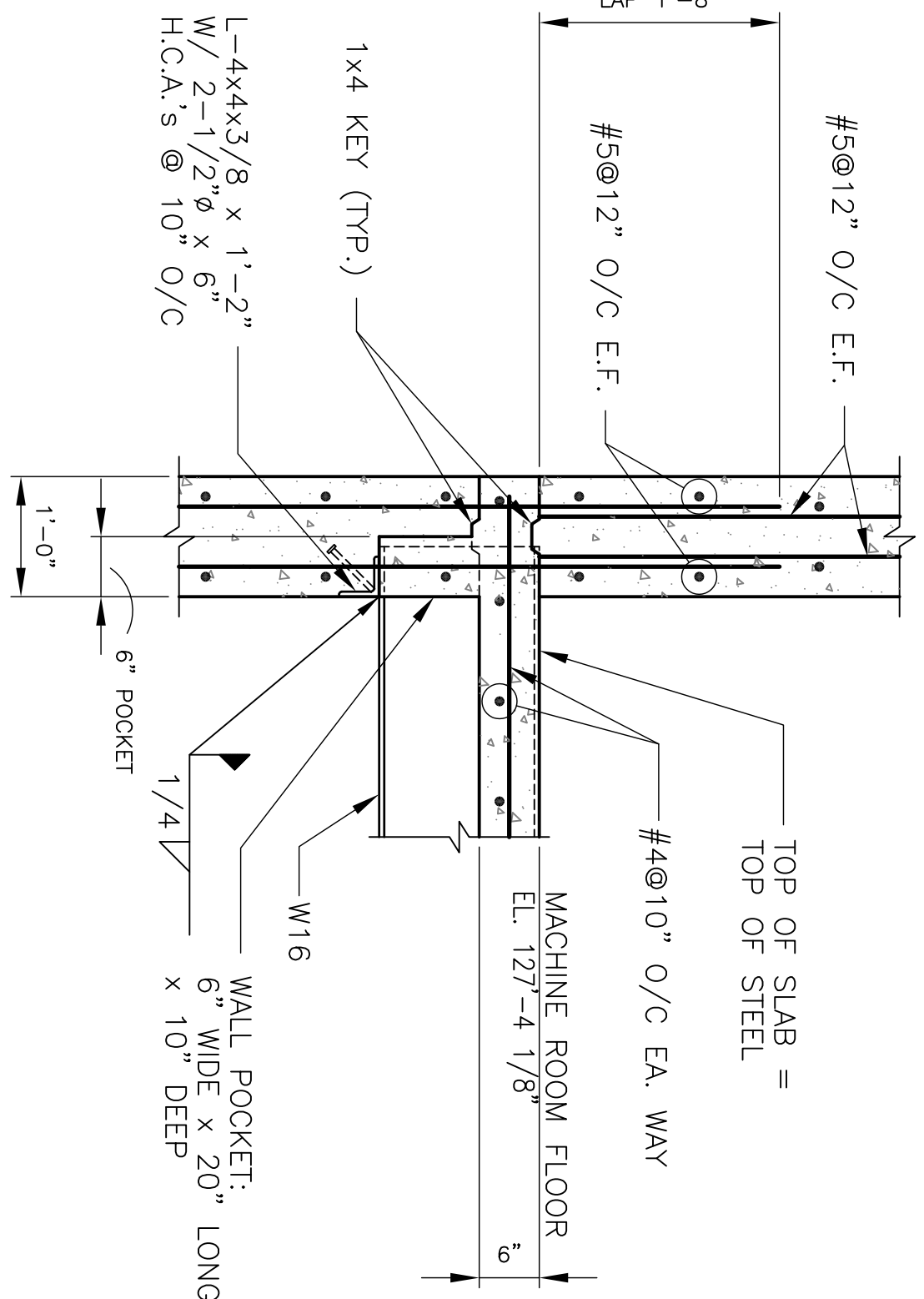


SECTION 1
3/4"=1'-0"

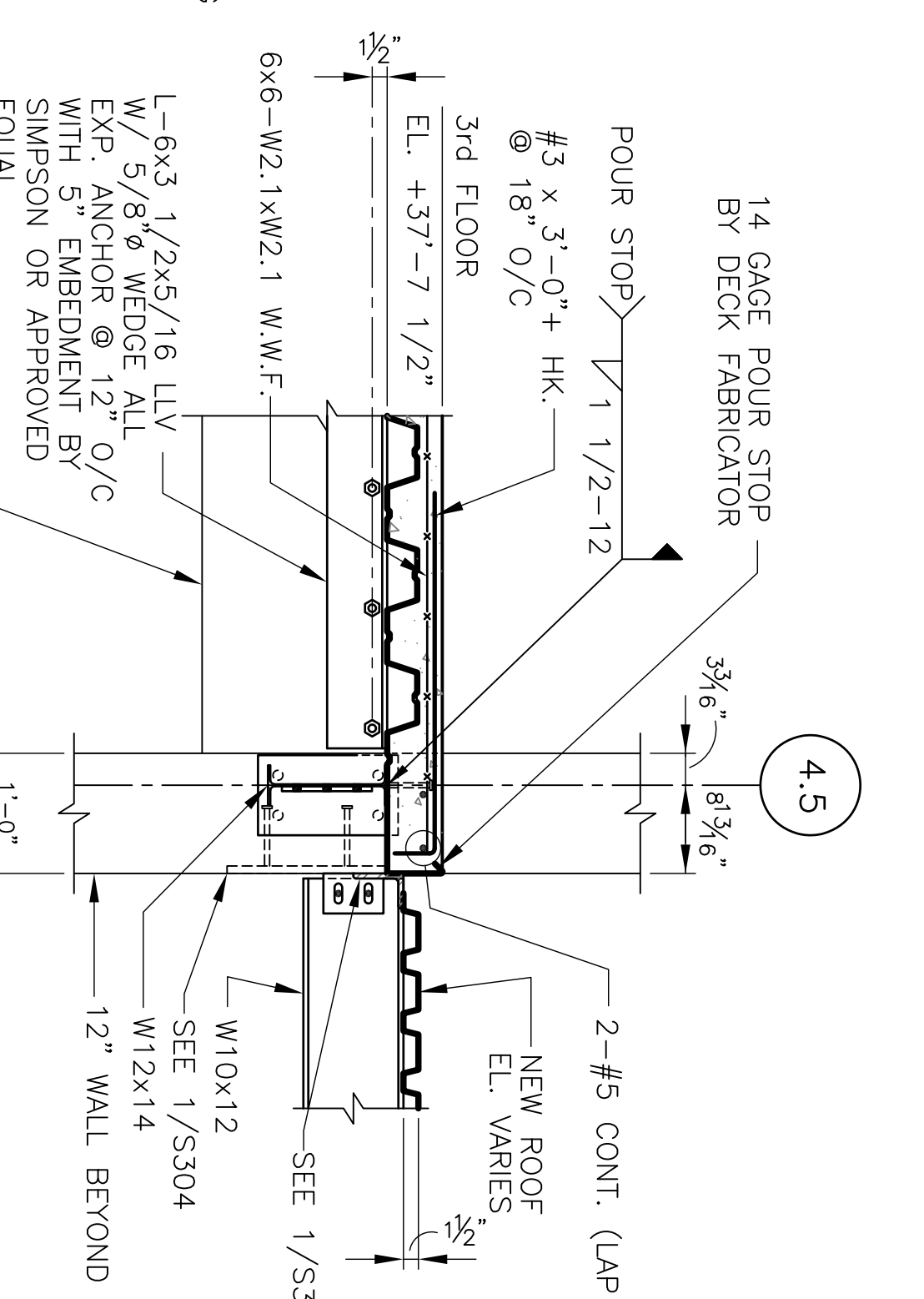
PLAN DETAIL 2
3/4"=1'-0"



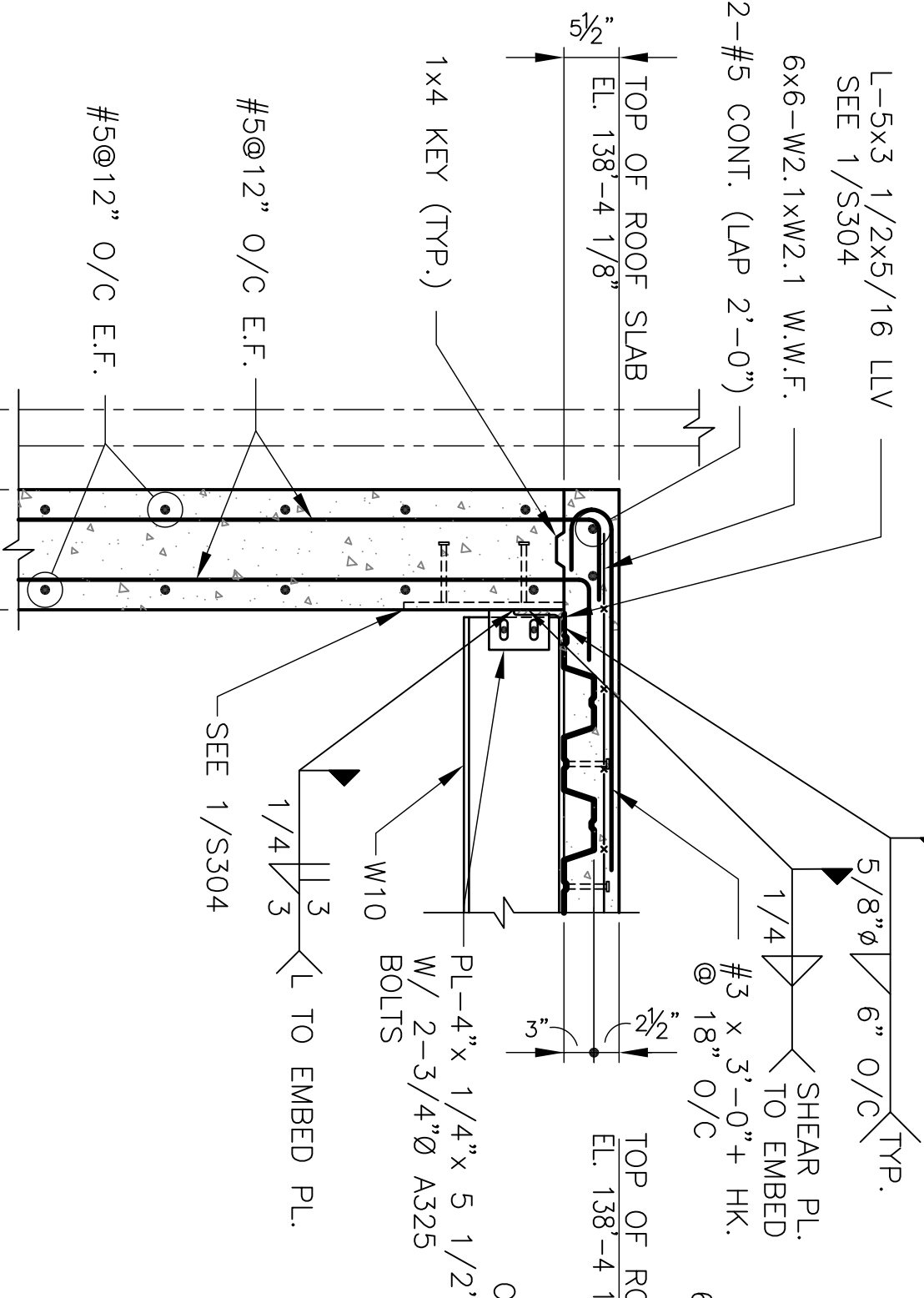
SECTION 4
3/4"=1'-0"



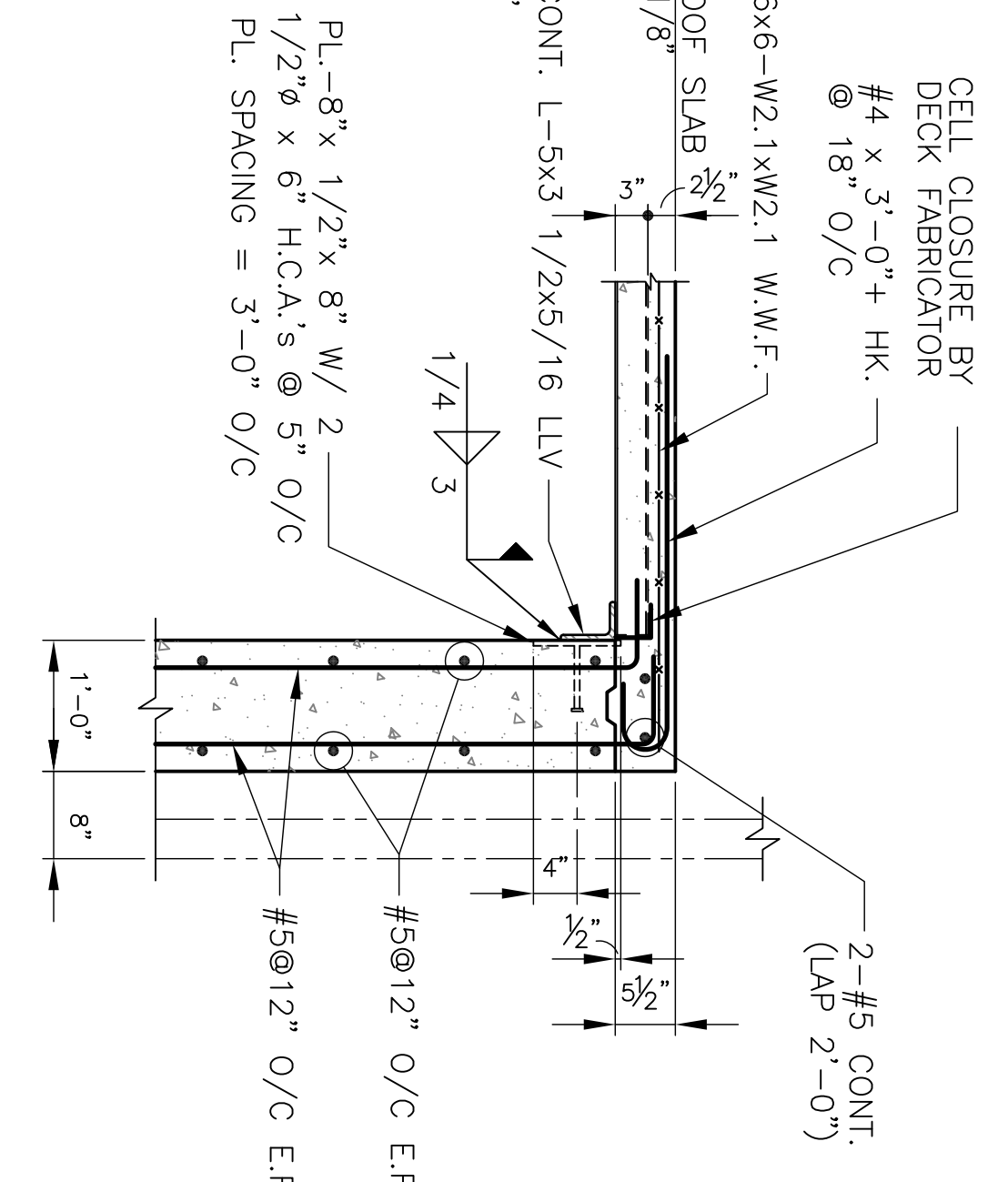
SECTION 5
3/4"=1'-0"



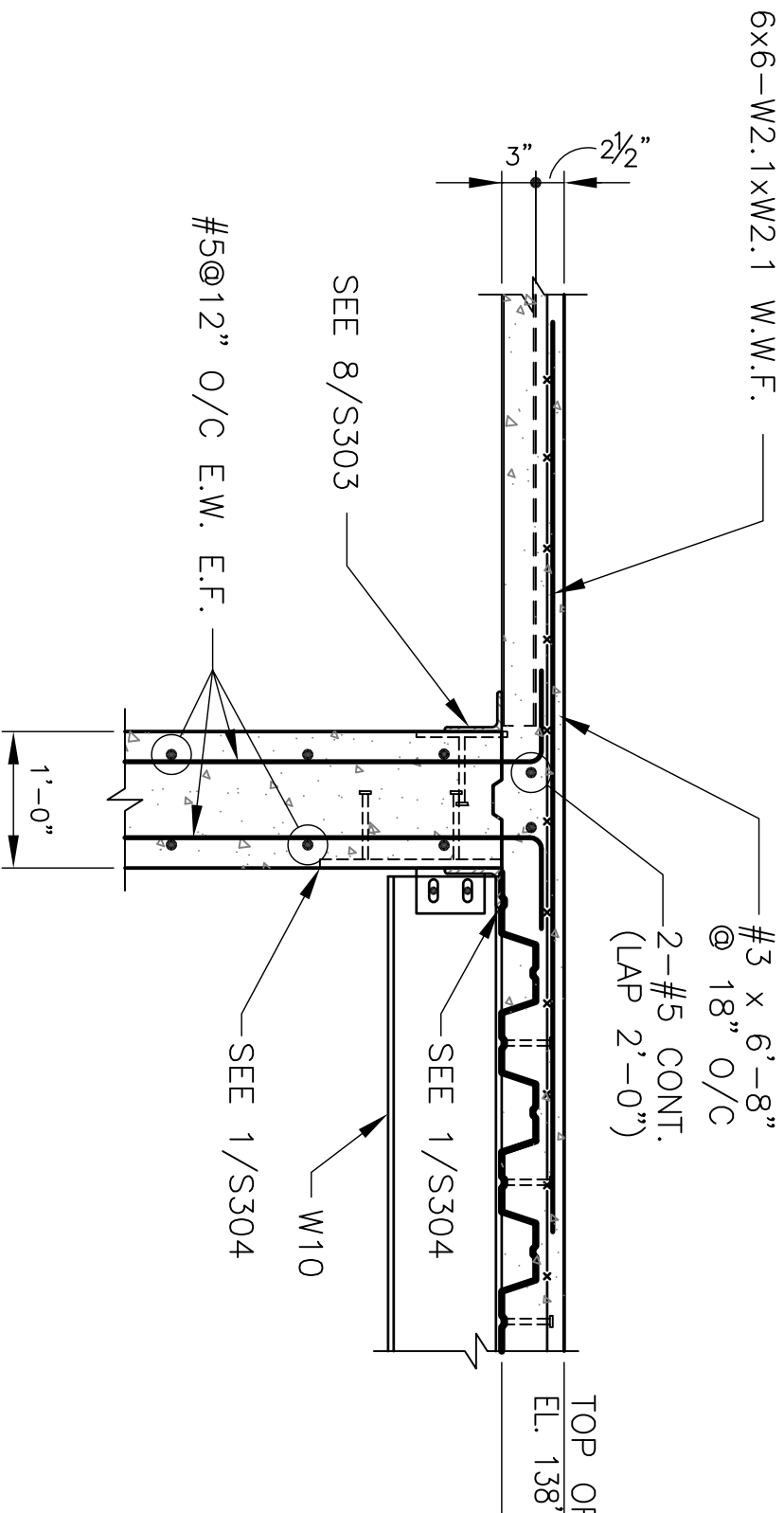
SECTION 6
3/4"=1'-0"



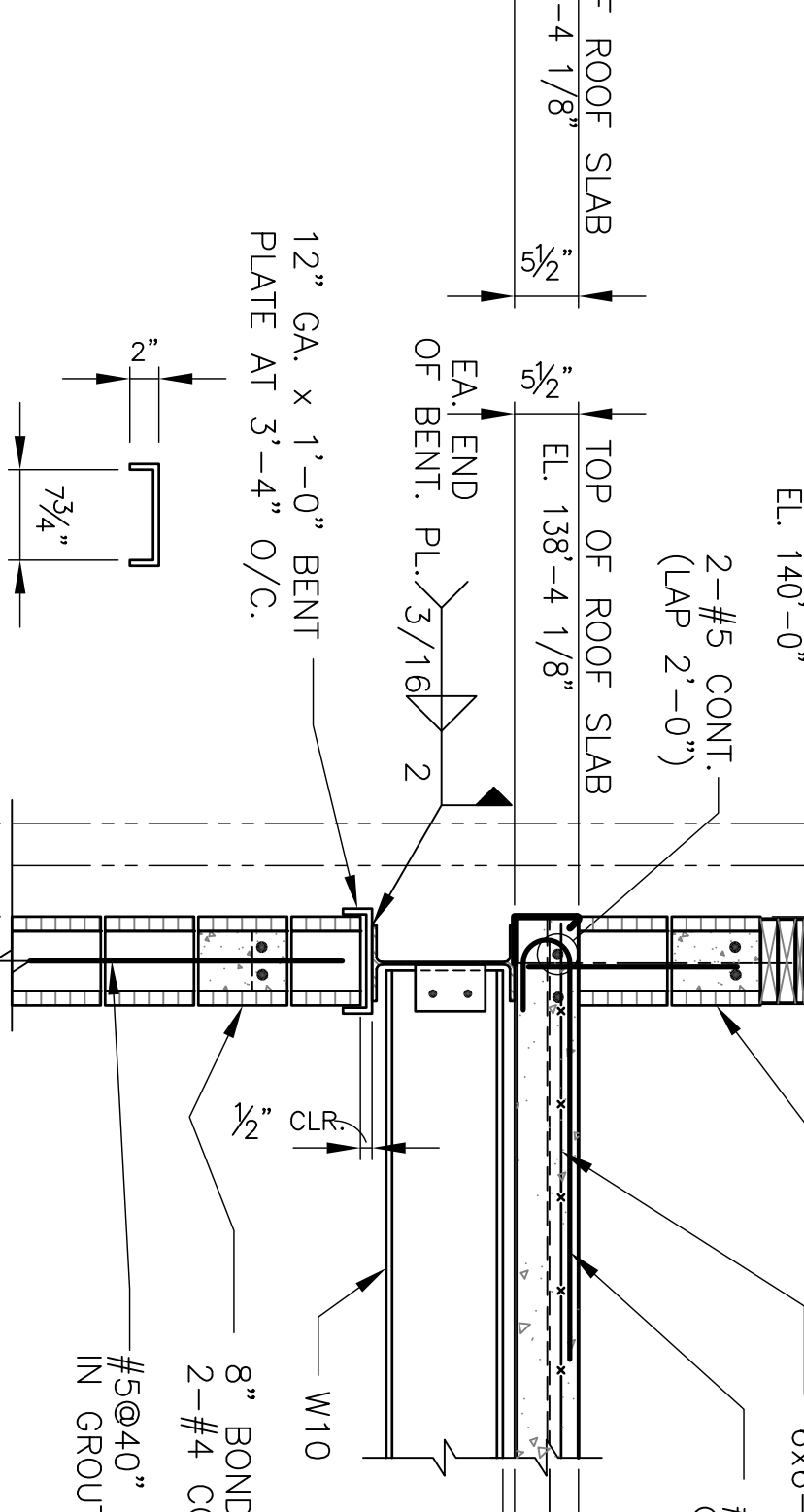
SECTION 7
3/4"=1'-0"



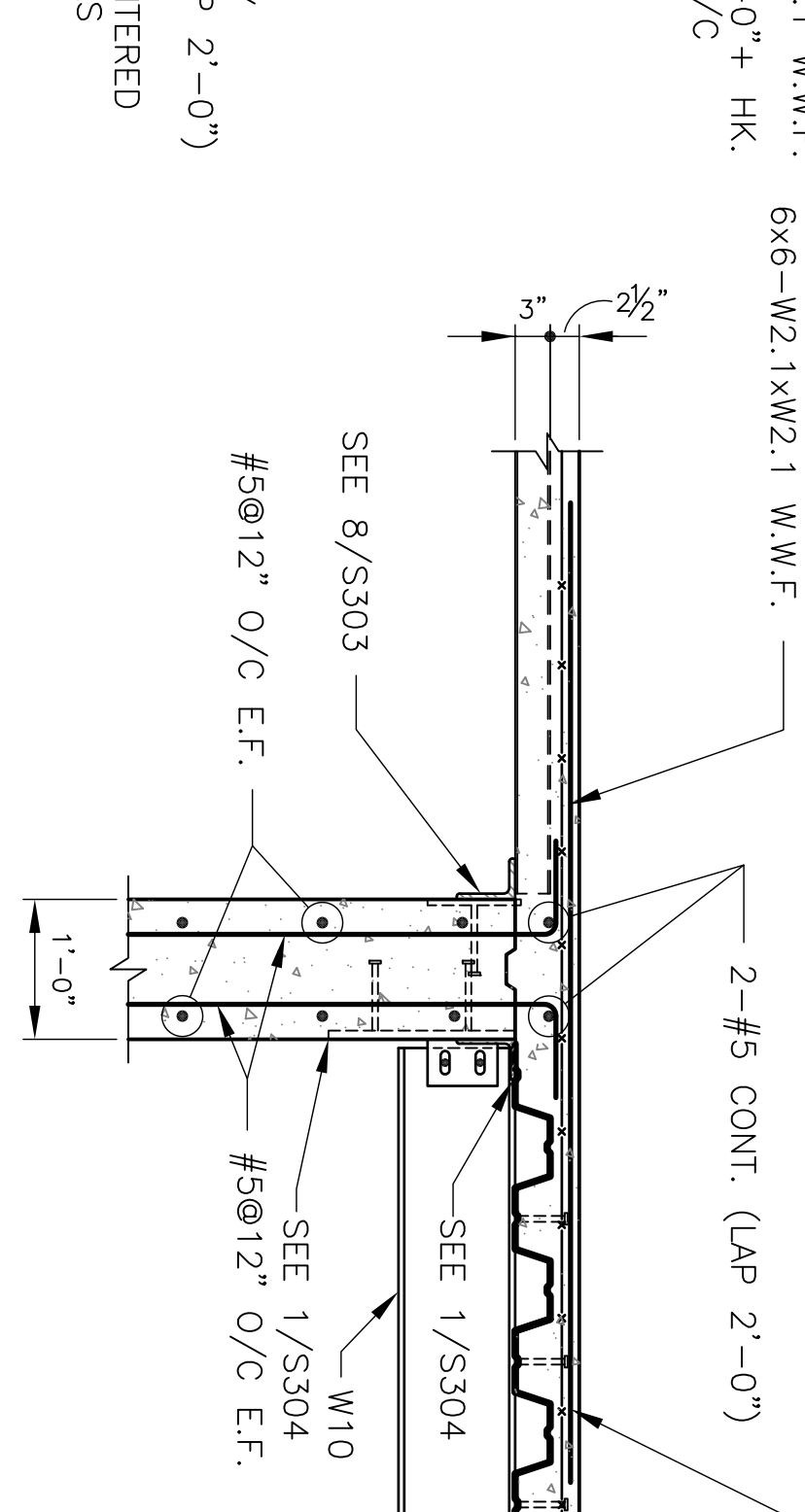
SECTION 8
3/4"=1'-0"



SECTION 9
3/4"=1'-0"



SECTION 10
3/4"=1'-0"



SECTION 11
3/4"=1'-0"

Revisions	Date

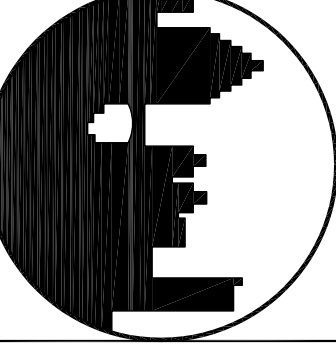
Toland ♦ Mizell ♦ Molnar, LLC

590 MEANS STREET NW,

SUITE 200

ATLANTA, GA, 30318

404-214-9774



PADGETT
Engineering Group
Consulting Structural Engineers
T 678 309 9070 F 678 309 0608

SECTIONS & DETAILS

Drawing Title

Project Title
2ND FLOOR OUTPATIENT MH
VA SHREVEPORT

Date
05-25-2011

100% REVIEW
SUBMITTAL

Building Number

Checked
BP

Drawn
AH

DRAWING NO.
S303

Veterans Administration