

A

1

2

3

4

5

6

7

8

**GENERAL NOTES:**

A. REGARDING BATHROOM FAN COIL UNITS SERVING THE PATIENT BATHROOMS THAT ARE TO BE DEMOLISHED ON FLOORS 6, 7 AND 8: THE FOUR PIPE FAN COIL UNITS SERVING THE BATHROOMS IN QUESTION MAY BE LOCATED ABOVE THE CORRIDORS AS SHOWN OR THEY MAY BE LOCATED ABOVE THE BATHROOMS. ALSO THEY MAY SERVE ONLY THE PERIMETER BATHROOMS OR MAY SERVE THE PERIMETER BATHROOMS AND THE BATHROOMS ACROSS THE CORRIDOR. IF A FAN COIL UNIT ONLY SERVES THE BATHROOM TO BE DEMOLISHED THEN THE FAN COIL UNIT SHALL BE REMOVED IN ITS ENTIRETY AS INDICATED ON THE DRAWINGS REGARDLESS OF WHETHER IT IS LOCATED ABOVE THE BATH ROOMS OR ABOVE THE CORRIDOR CEILINGS. IF A FAN COIL UNIT SERVES THE DEMOLISHED BATHROOMS AND BATHROOMS ACROSS THE CORRIDOR THEN THE FAN COIL UNIT SHALL REMAIN IN PLACE AND IN OPERATION AND ONLY THE DUCTWORK SERVING THE DEMOLISHED BATHROOMS SHALL BE REMOVED.

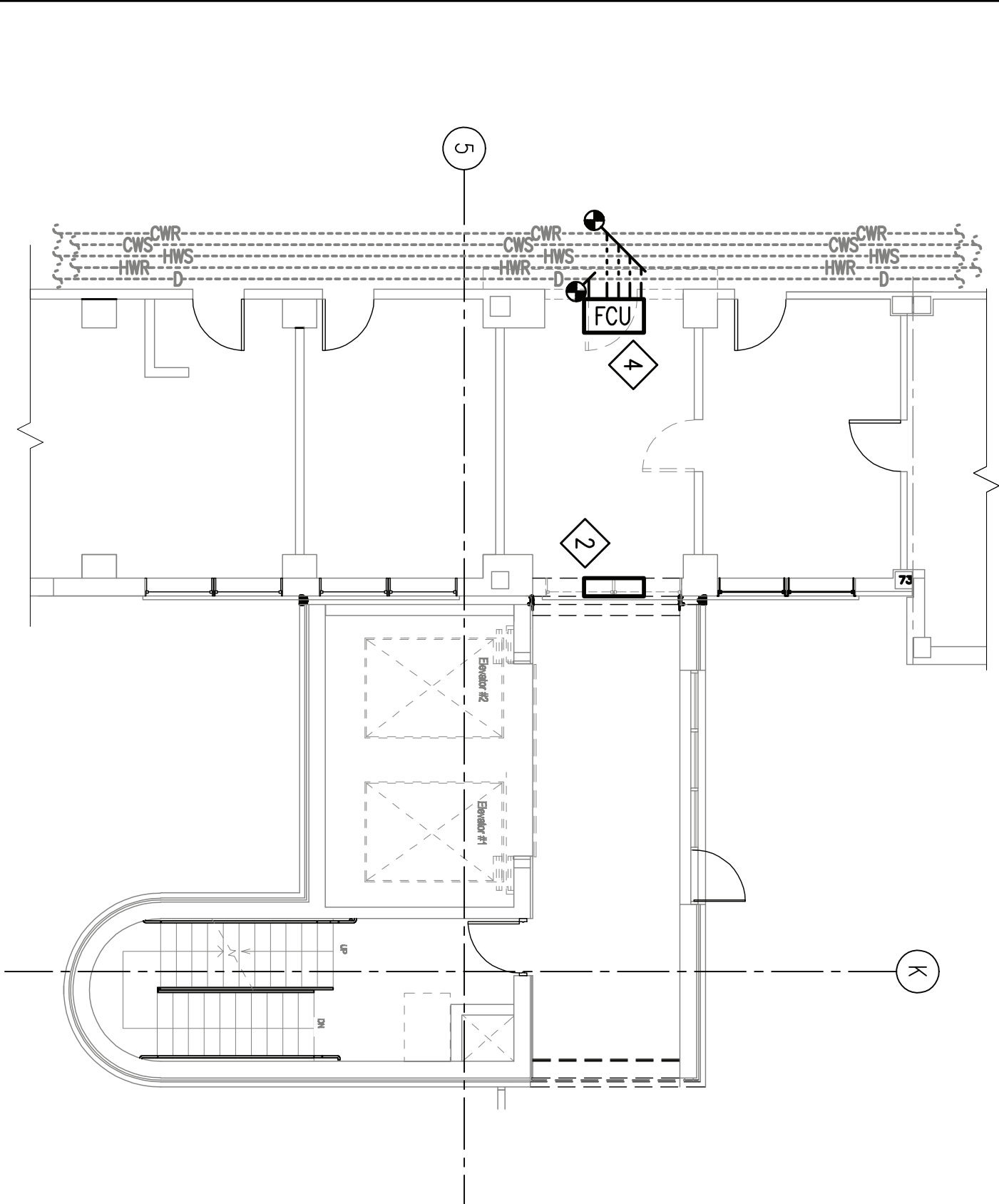
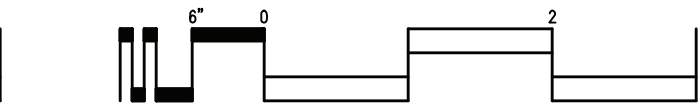
**DEMOLITION NOTES:**

(THIS SHEET ONLY)

- 1> NO HVAC DEMOLITION WORK THIS FLOOR
- 2> REMOVE EXISTING ABANDONED STEAM CONNECTOR IN ITS ENTIRETY, REMOVE ALL ASSOCIATED STEAM AND CONDENSATE PIPING. PIPING MUST BE REMOVED TO BELOW FINISH FLOOR LEVEL.
- 3> FAN COIL UNIT TO REMAIN. SEE PLUMBING DRAWINGS AND ENSURE COOLING COIL CONDENSATE DRAIN MODIFICATIONS ARE COMPLETE AND TESTED PRIOR TO TURNING THIS UNIT BACK INTO SERVICE.
- 4> CAREFULLY REMOVE EXISTING FAN COIL UNIT AND TURN OVER TO GOVERNMENT. REMOVE HWS/HMR AND CWS/CWR PIPING BACK TO MAINS AND PERMANENTLY CAP AT MAINS AND REINSULATE. SEE GENERAL NOTES ON SHEET M601 FOR ADDITIONAL REQUIREMENTS. COORDINATE REMOVAL OF COOLING COIL CONDENSATE PIPE WITH PLUMBING WORK.
- 5> CAREFULLY REMOVE EXISTING FAN COIL AND WALL MOUNTED THERMOSTAT AND REINSTALL AS SHOWN IN NEW WORK PLAN. COORDINATE NEW COOLING COIL CONDENSATE DRAIN WITH CONDENSATE DRAIN PIPING MODIFICATIONS SHOWN ON PLUMBING DRAWINGS. ALL PIPE BRANCHES ON REMOVED UNITS MUST BE REMOVED, CAPPED AND MAINS REINSULATED.
- 6> EXISTING ABOVE CEILING FAN COIL UNIT TO REMAIN.
- 7> REMOVE EXISTING ABOVE CEILING FAN COIL UNIT IN ITS ENTIRETY. REMOVE ALL ASSOCIATED CWS/CWR, HWS/HMR, AND CONDENSATE PIPING BACK TO MAINS. PERMANENTLY CAP AND REINSULATE MAINS.

C

three-quarters inch = one foot



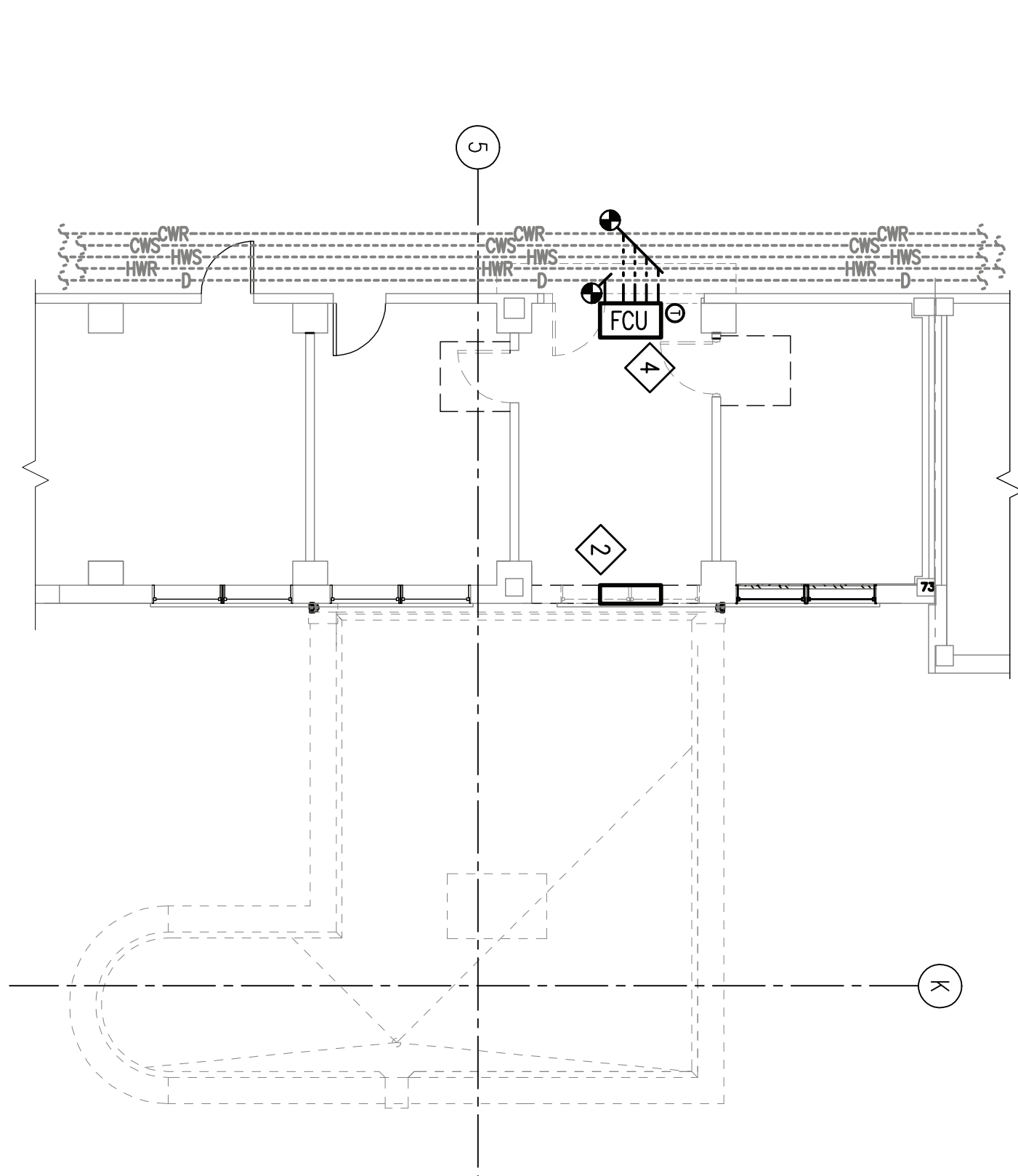
**PIPING DEMOLITION  
2ND FLOOR – MECHANICAL**

SCALE: 1/8" = 1'-0"



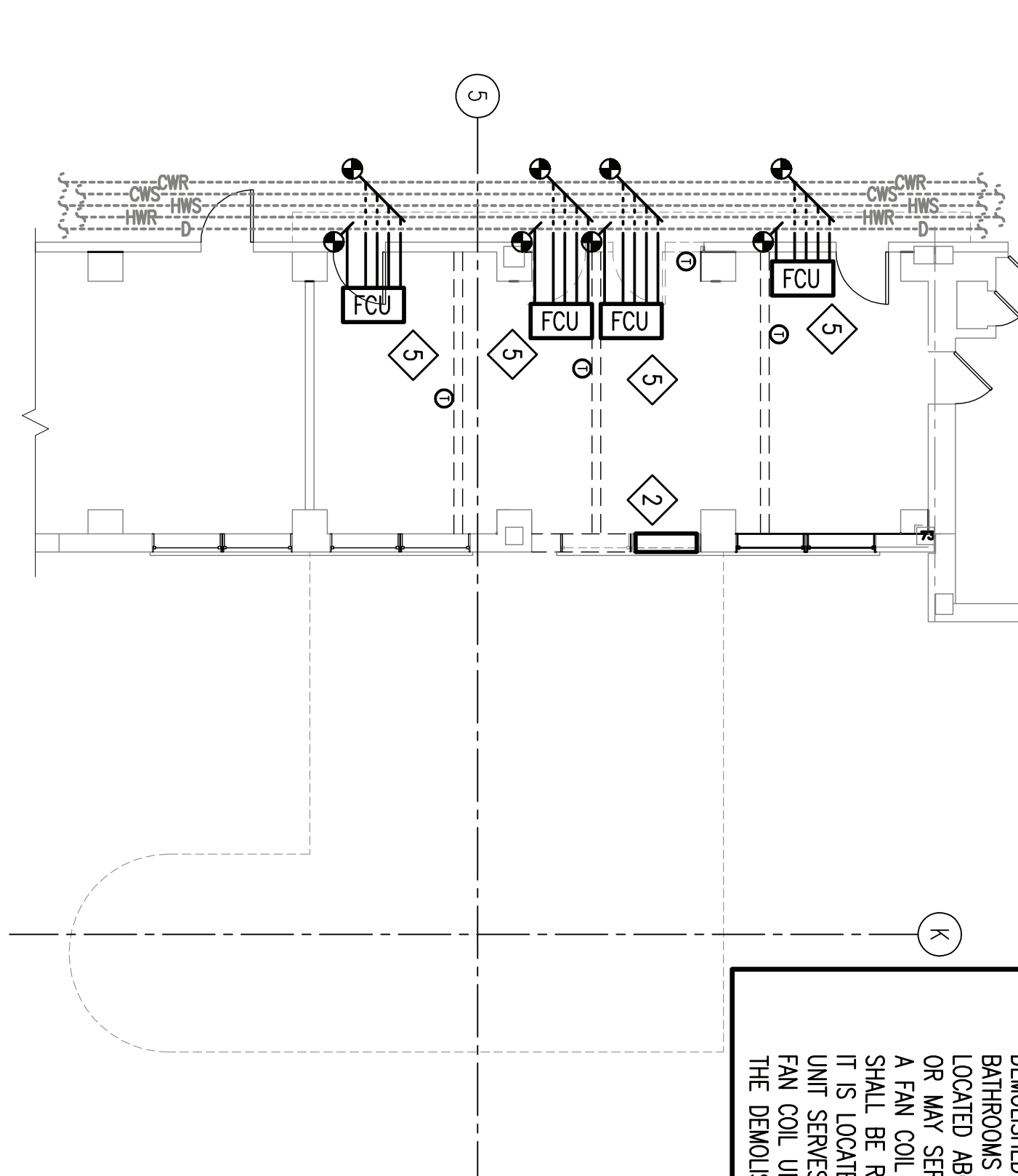
**PIPING DEMOLITION  
3RD FLOOR – MECHANICAL**

SCALE: 1/8" = 1'-0"



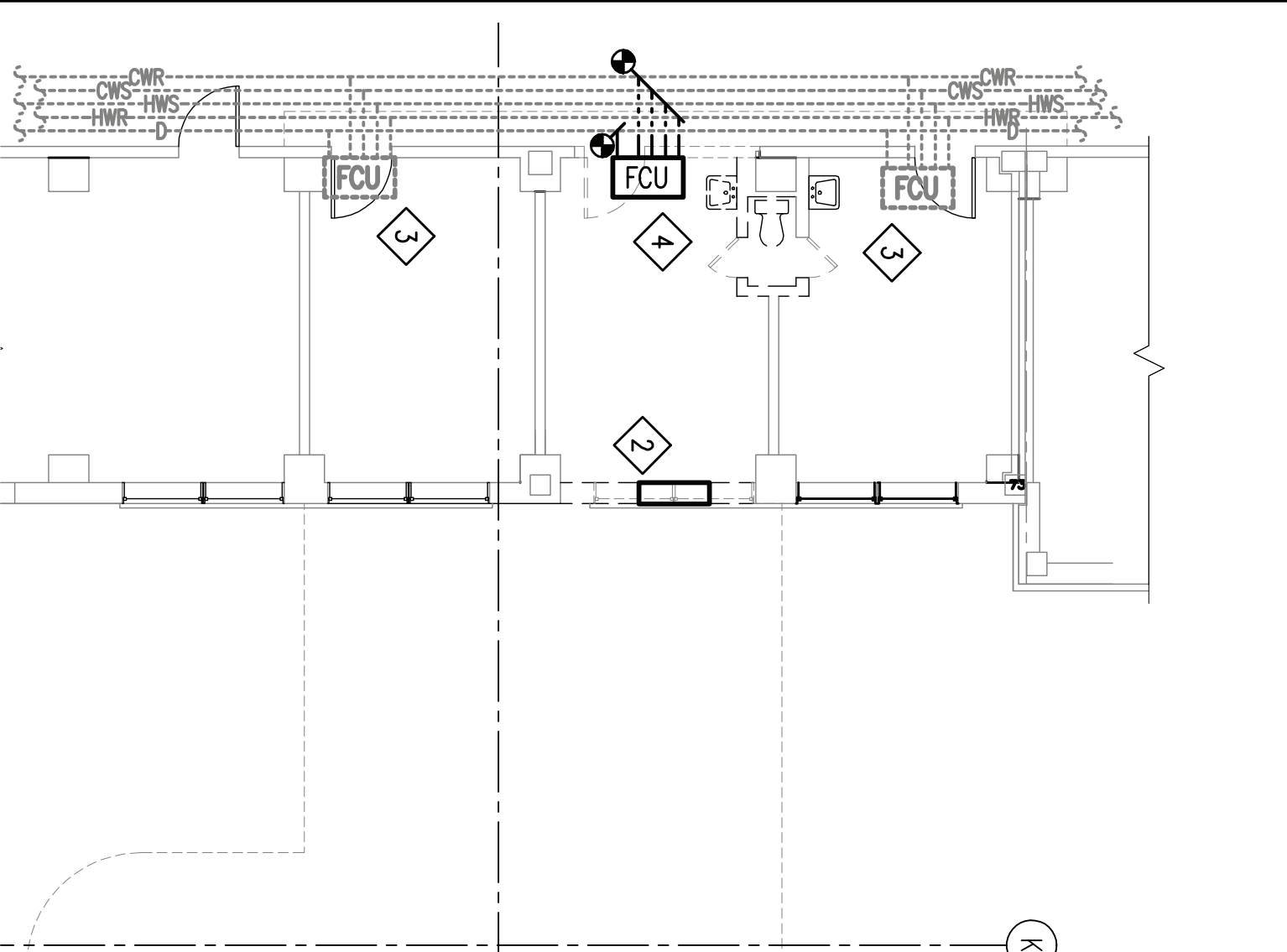
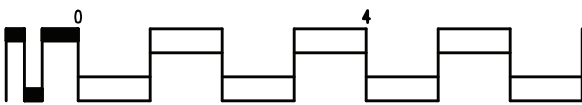
**PIPING DEMOLITION  
4TH FLOOR & ELEVATOR ROOF – MECHANICAL**

SCALE: 1/8" = 1'-0"



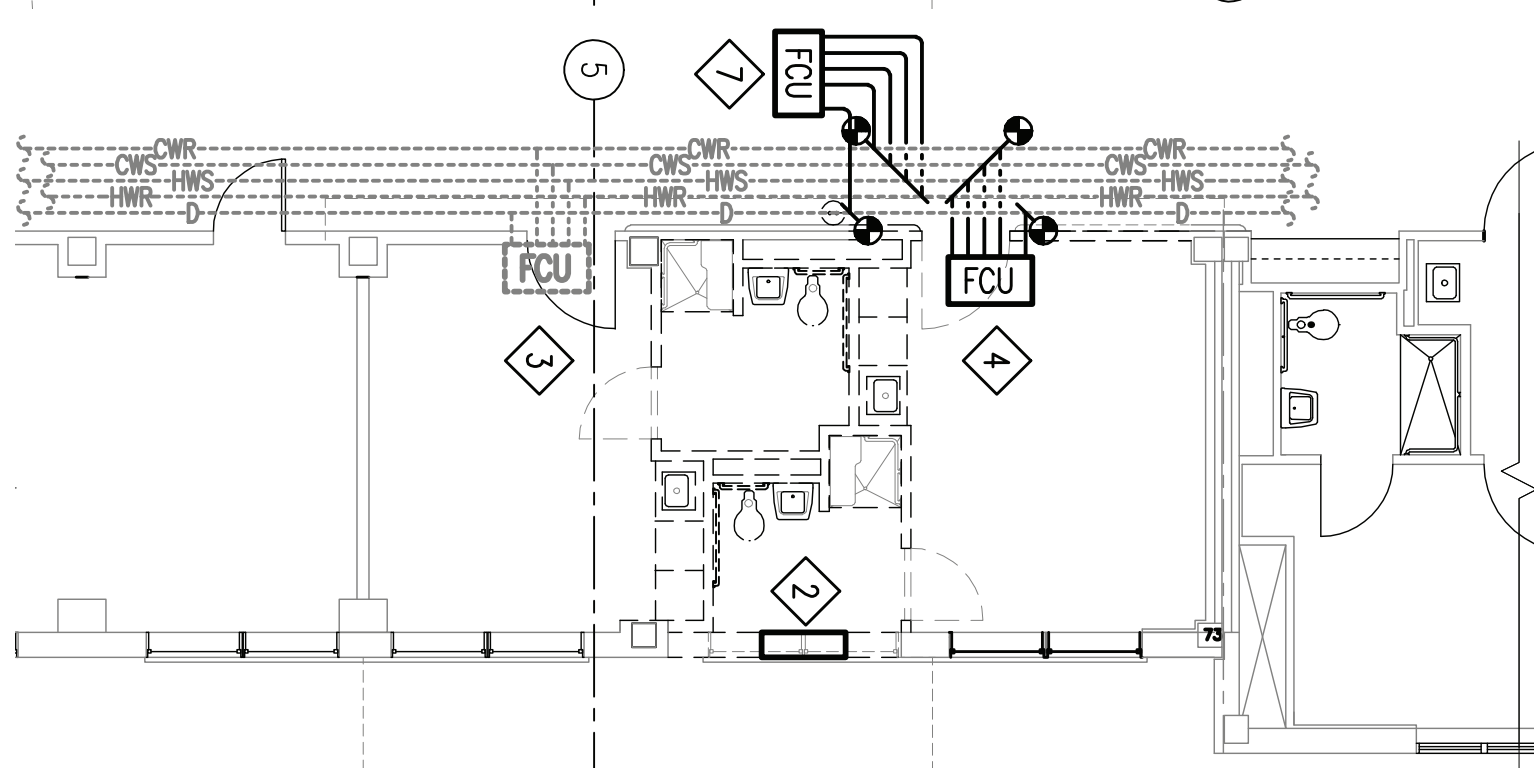
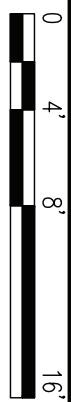
D

three-eighths inch = one foot



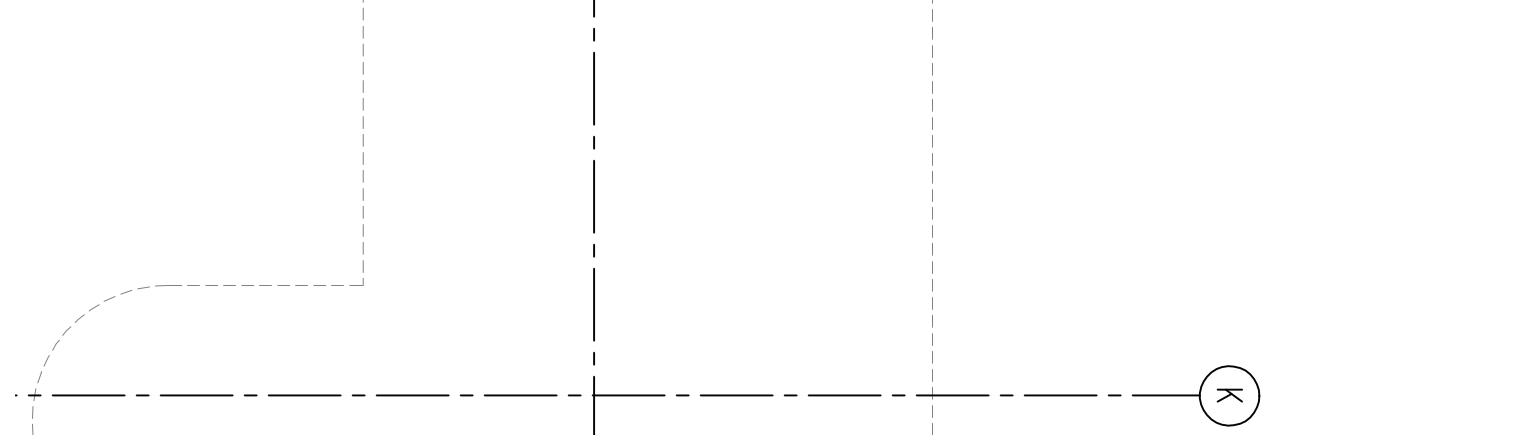
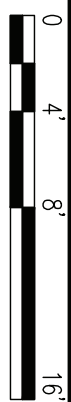
**PIPING DEMOLITION  
5TH FLOOR – MECHANICAL**

SCALE: 1/8" = 1'-0"



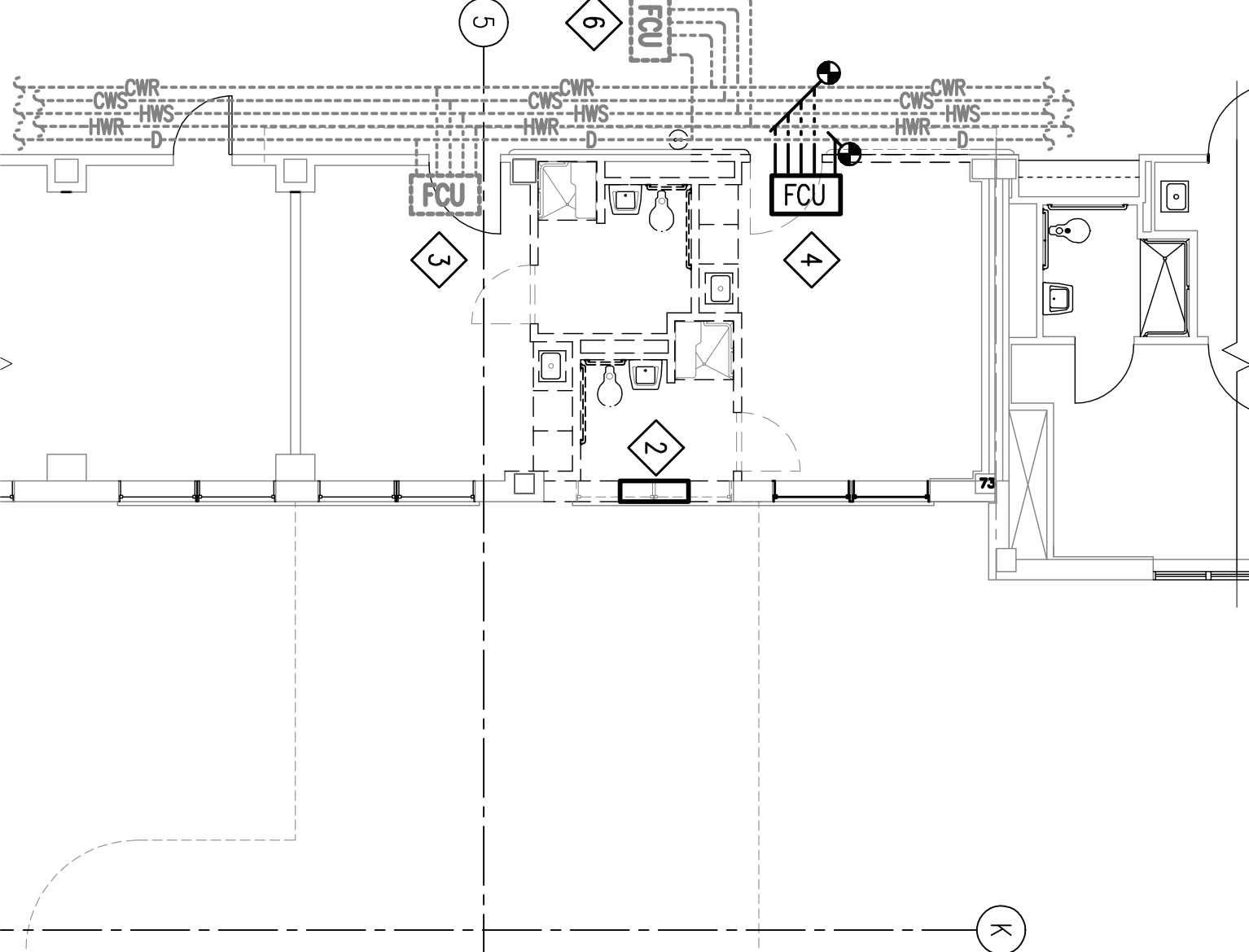
**PIPING DEMOLITION  
6TH FLOOR – MECHANICAL**

SCALE: 1/8" = 1'-0"



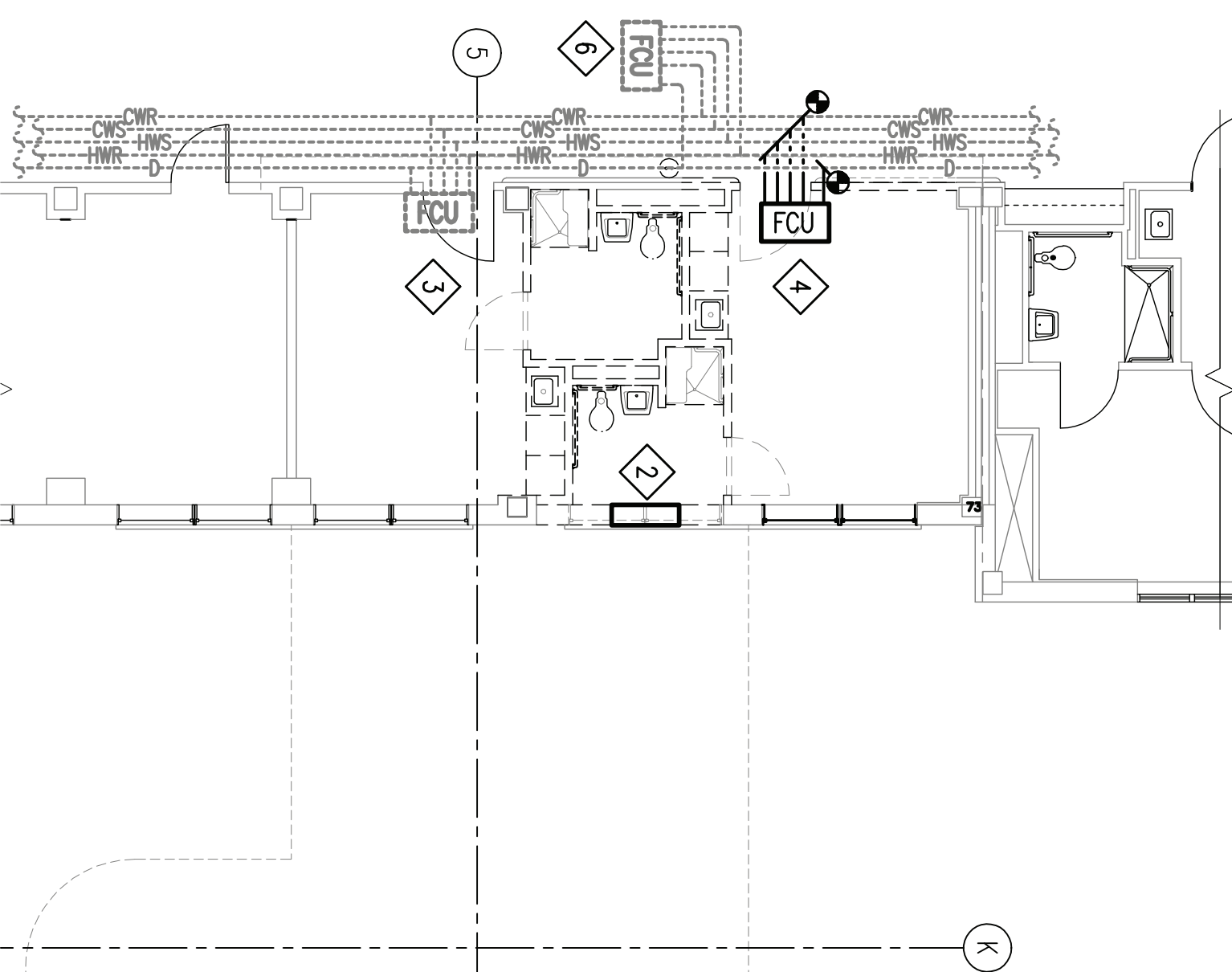
**PIPING DEMOLITION  
7TH FLOOR – MECHANICAL**

SCALE: 1/8" = 1'-0"



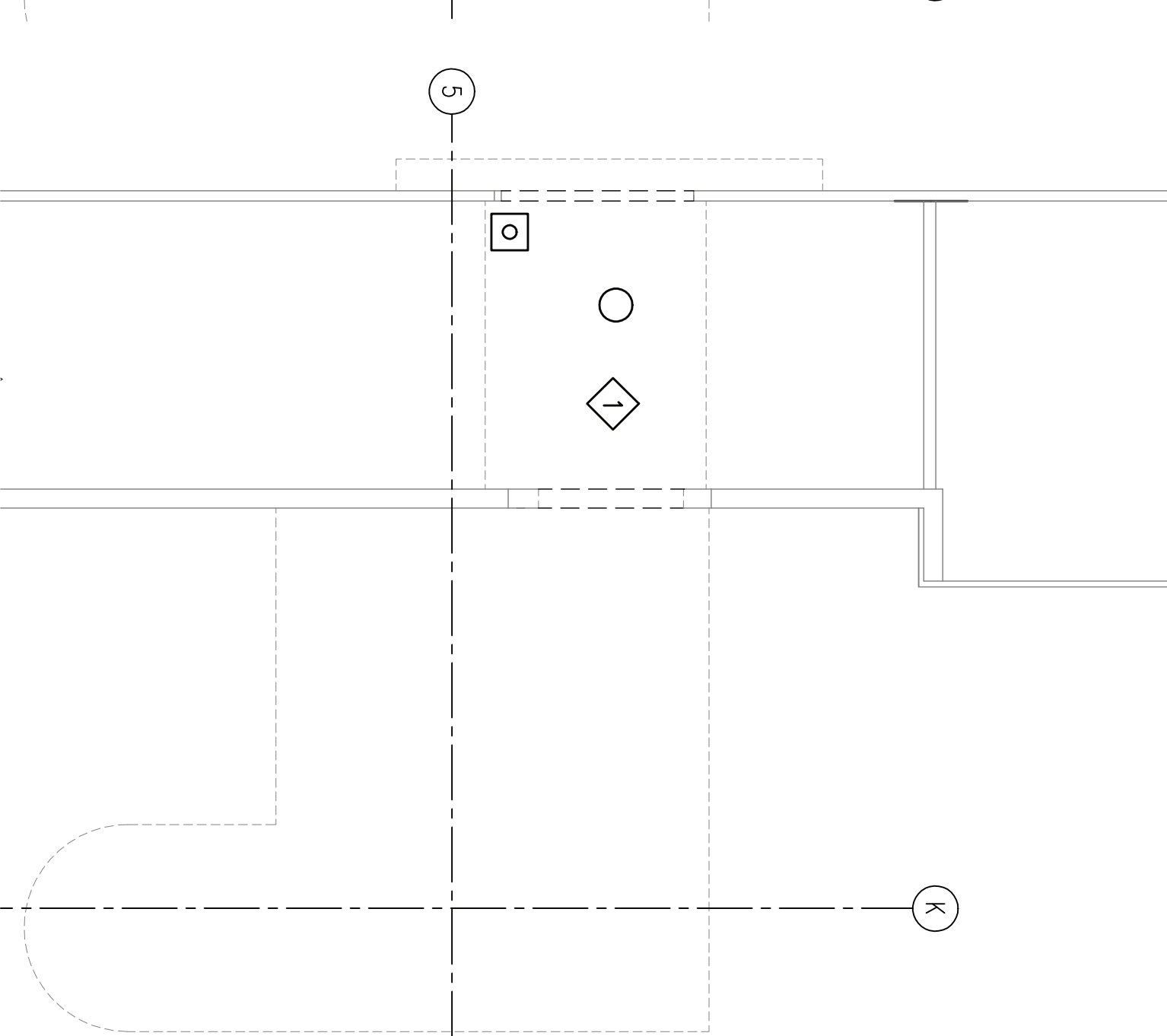
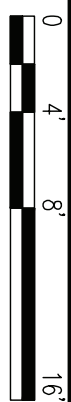
**PIPING DEMOLITION  
8TH FLOOR – MECHANICAL**

SCALE: 1/8" = 1'-0"



**PIPING DEMOLITION  
9TH FLOOR – MECHANICAL**

SCALE: 1/8" = 1'-0"



Date  
05-25-2011

Project No.  
VA256-C-1047

Project Title  
**2ND FLOOR OUTPATIENT  
MENTAL HEALTH**

Drawing Title  
**ENLARGED STAIR  
PIPING DEMOLITION  
FLOOR PLANS-MECHANICAL**

Approved Project Engineer

Building Number  
**BLDG 1 SOUTH WING**

Location  
**VA MEDICAL CENTER  
SHREVEPORT, LOUISIANA**

Checked  
PJC

Drawn  
JSW

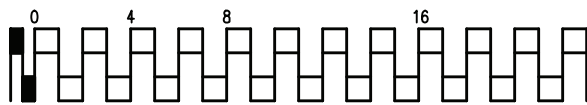
Drawing No.  
**MD102**

Dwg. of

**Veterans  
Administration**

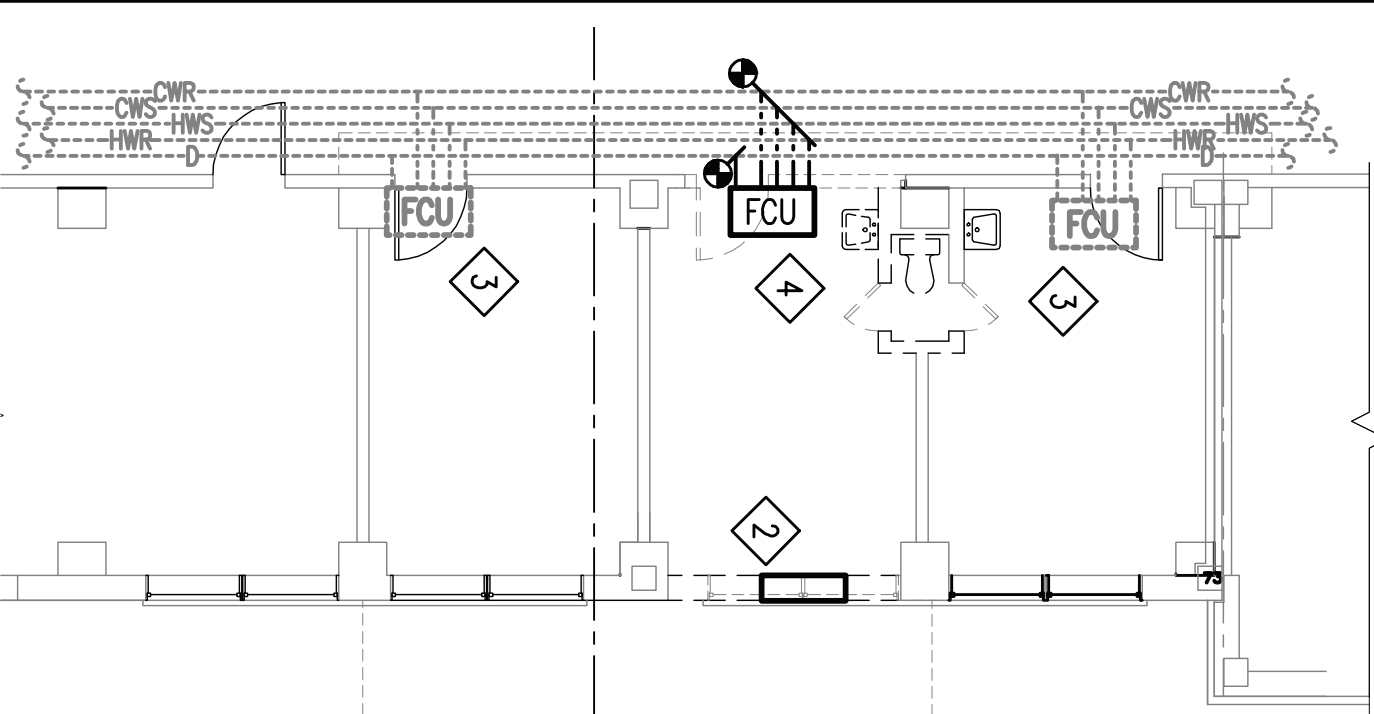
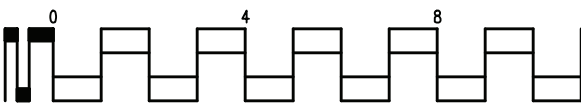
F

one-eighth inch = one foot



E

one-quarter inch = one foot



Revisions	Date

D

E

F

A