

A

1

2

3

4

5

6

7

8

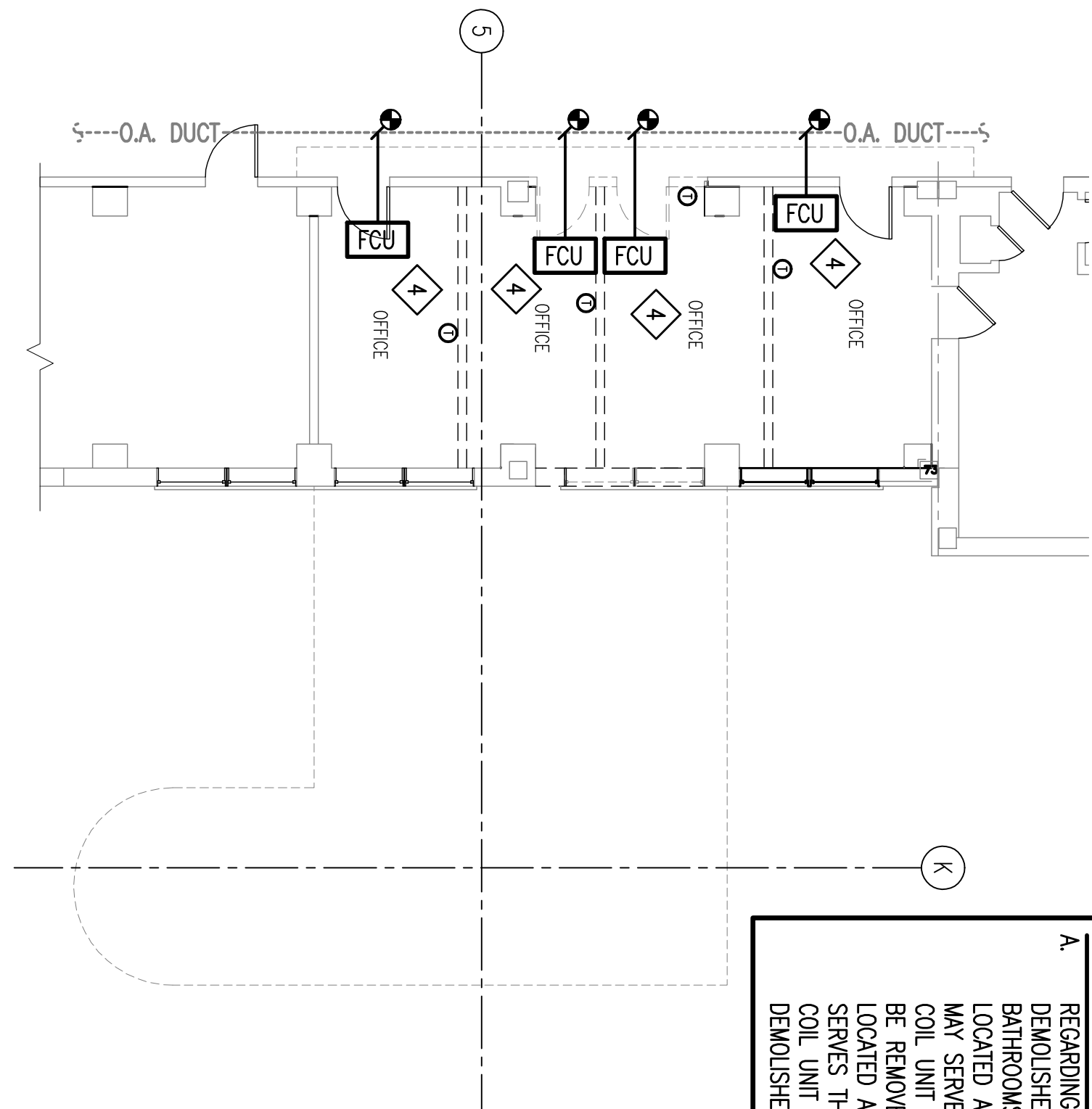
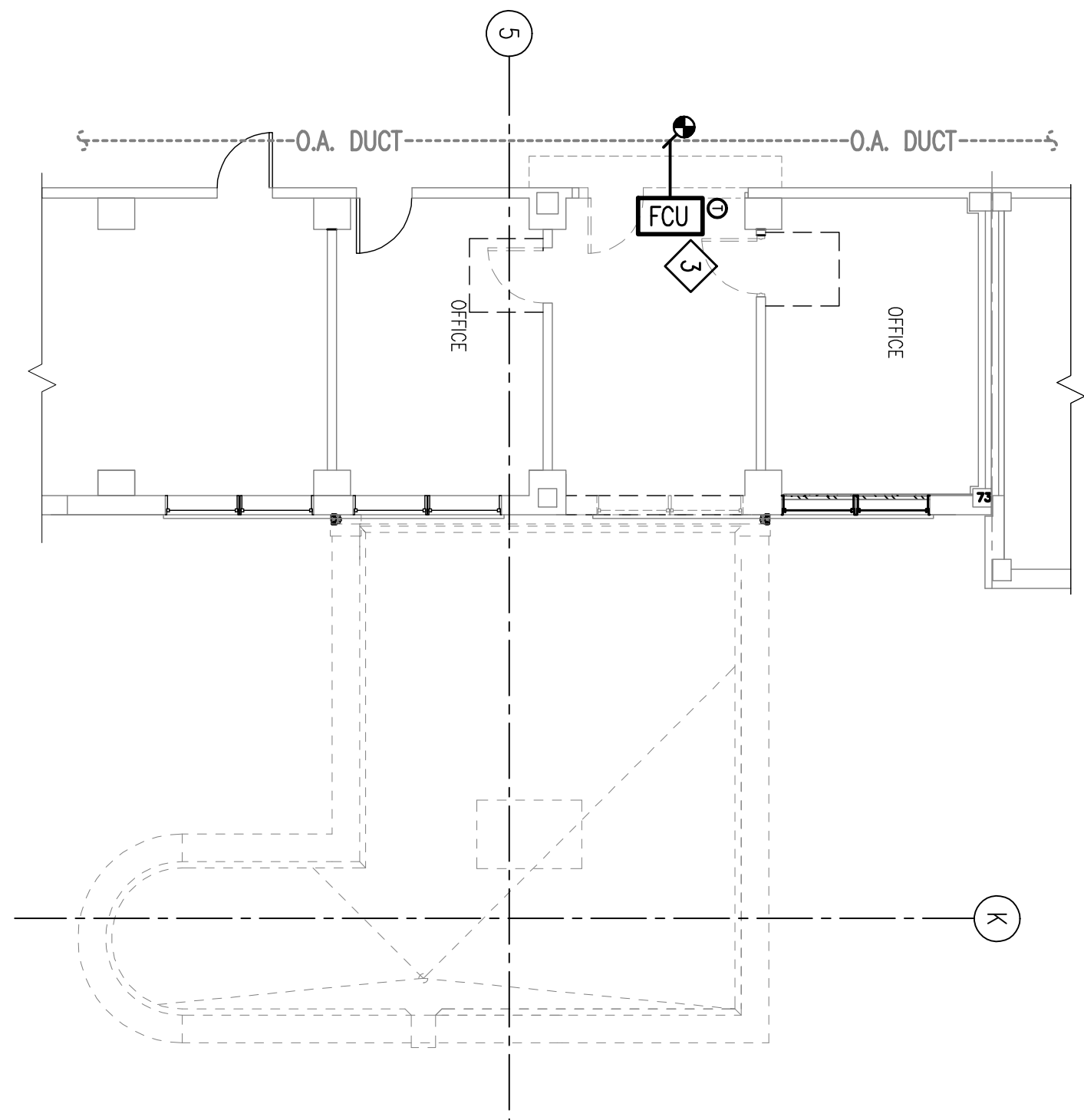
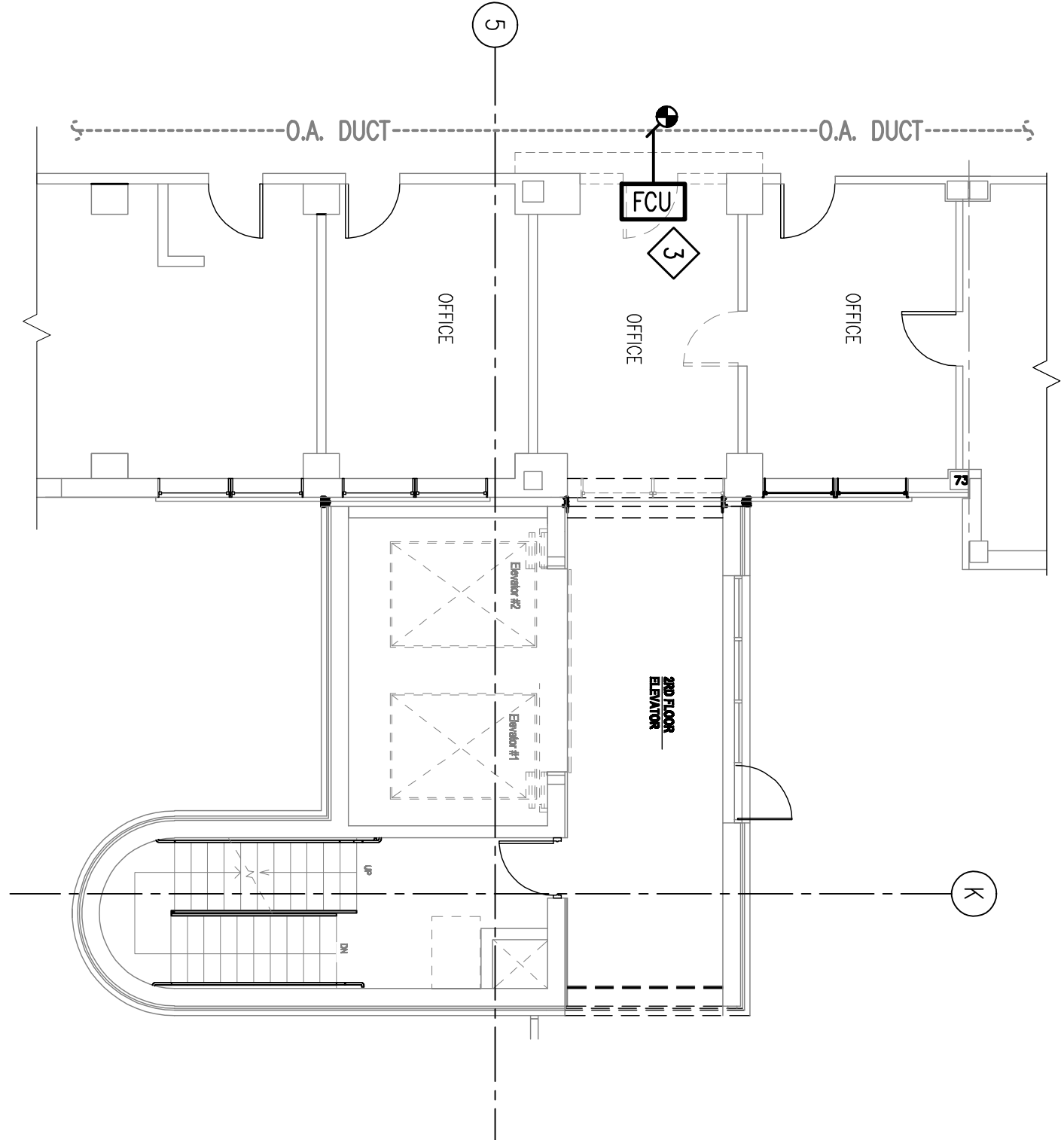
GENERAL NOTES:

A. REGARDING BATHROOM FAN COIL UNITS SERVING THE PATIENT BATHROOMS THAT ARE TO BE DEMOLISHED ON FLOORS 6, 7 AND 8: THE FOUR PIPE FAN COIL UNITS SERVING THE BATHROOMS IN QUESTION MAY BE LOCATED ABOVE THE CORRIDORS AS SHOWN OR THEY MAY BE LOCATED ABOVE THE BATHROOMS. ALSO THEY MAY SERVE ONLY THE PERIMETER BATHROOMS OR MAY SERVE THE PERIMETER BATHROOMS AND THE BATHROOMS ACROSS THE CORRIDOR. IF A FAN COIL UNIT ONLY SERVES THE BATHROOM TO BE DEMOLISHED THEN THE FAN COIL UNIT SHALL BE REMOVED IN ITS ENTIRETY AS INDICATED ON THE DRAWINGS REGARDLESS OF WHETHER IT IS LOCATED ABOVE THE BATH ROOMS OR ABOVE THE CORRIDOR CEILINGS. IF A FAN COIL UNIT SERVES THE DEMOLISHED BATHROOMS AND BATHROOMS ACROSS THE CORRIDOR THEN THE FAN COIL UNIT SHALL REMAIN IN PLACE AND IN OPERATION AND ONLY THE DUCTWORK SERVING THE DEMOLISHED BATHROOMS SHALL BE REMOVED.

DEMOLITION NOTES:

(THIS SHEET ONLY)

- 1> NO HVAC DEMOLITION WORK THIS FLOOR
- 2> FAN COIL UNIT TO REMAIN. TEST PRIOR TO TURNING THIS UNIT BACK INTO SERVICE.
- 3> CAREFULLY REMOVE EXISTING FAN COIL UNIT AND TURN OVER TO GOVERNMENT. REMOVE VENTILATION AIR DUCT BACK TO MAIN DUCT AND PERMANENTLY PATCH AND REINSULATE MAIN DUCT. SEE GENERAL NOTES ON SHEET M601 FOR ADDITIONAL REQUIREMENTS.
- 4> CAREFULLY REMOVE EXISTING FAN COIL AND WALL MOUNTED THERMOSTAT AND REINSTALL AS SHOWN IN NEW WORK PLAN. ALL VENTILATION AIR DUCT BRANCHES MUST BE REMOVED, CAPPED AND MAINS REINSULATED.
- 5> EXISTING ABOVE CEILING FAN COIL UNIT TO REMAIN. REMOVE SUPPLY DUCTWORK TO AFFECTED BATHROOMS AND PERMANENTLY CAP AND REINSULATE MAIN DUCT.
- 6> REMOVE EXISTING ABOVE CEILING FAN COIL UNIT IN ITS ENTIRETY. REMOVE ALL ASSOCIATED SUPPLY DUCT, MAKE-UP AIR DUCT AND DIFFUSERS. PERMANENTLY CAP DUCT AND PATCH AND REINSULATE MAIN DUCT.
- 7> DUCT TO BATHROOMS ACROSS CORRIDOR.



**DUCTWORK DEMOLITION
2ND FLOOR – MECHANICAL**

SCALE: 1/8" = 1'-0"



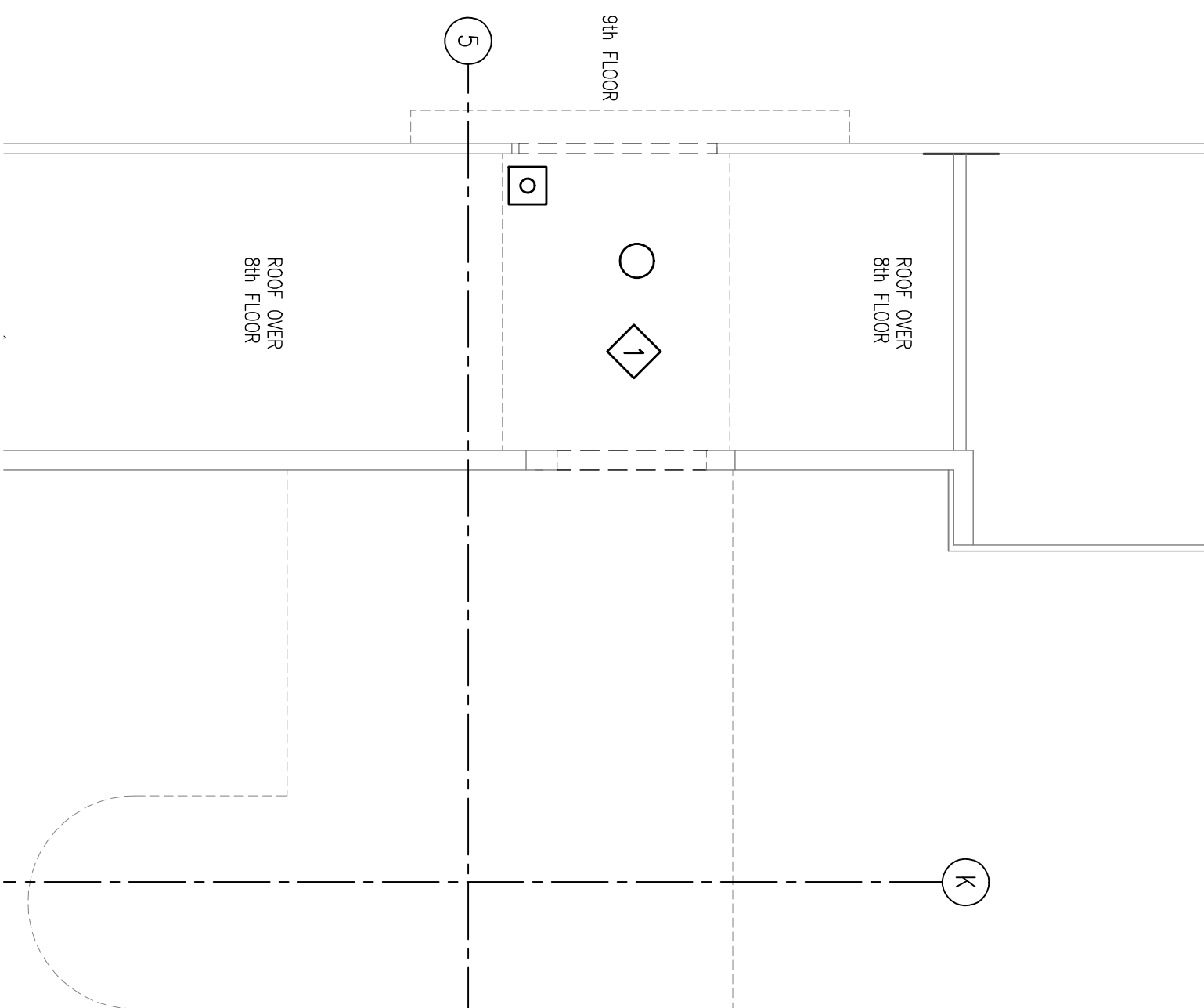
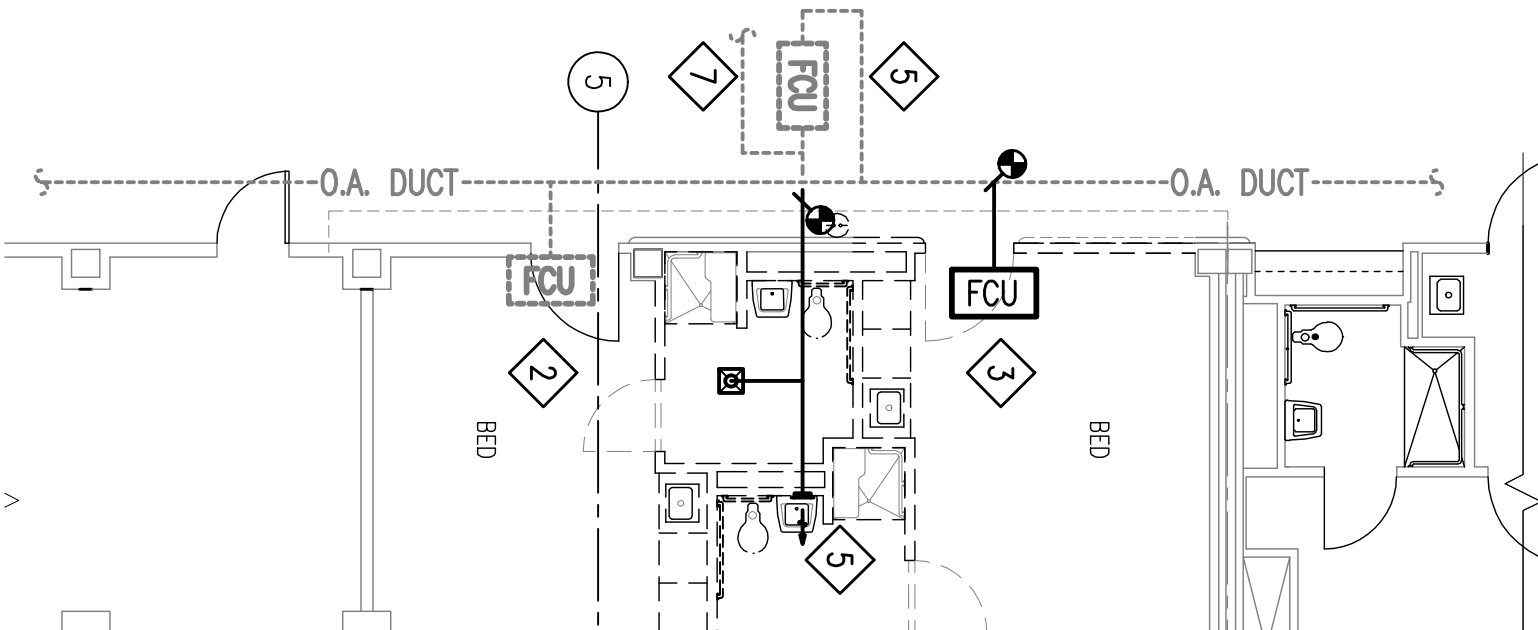
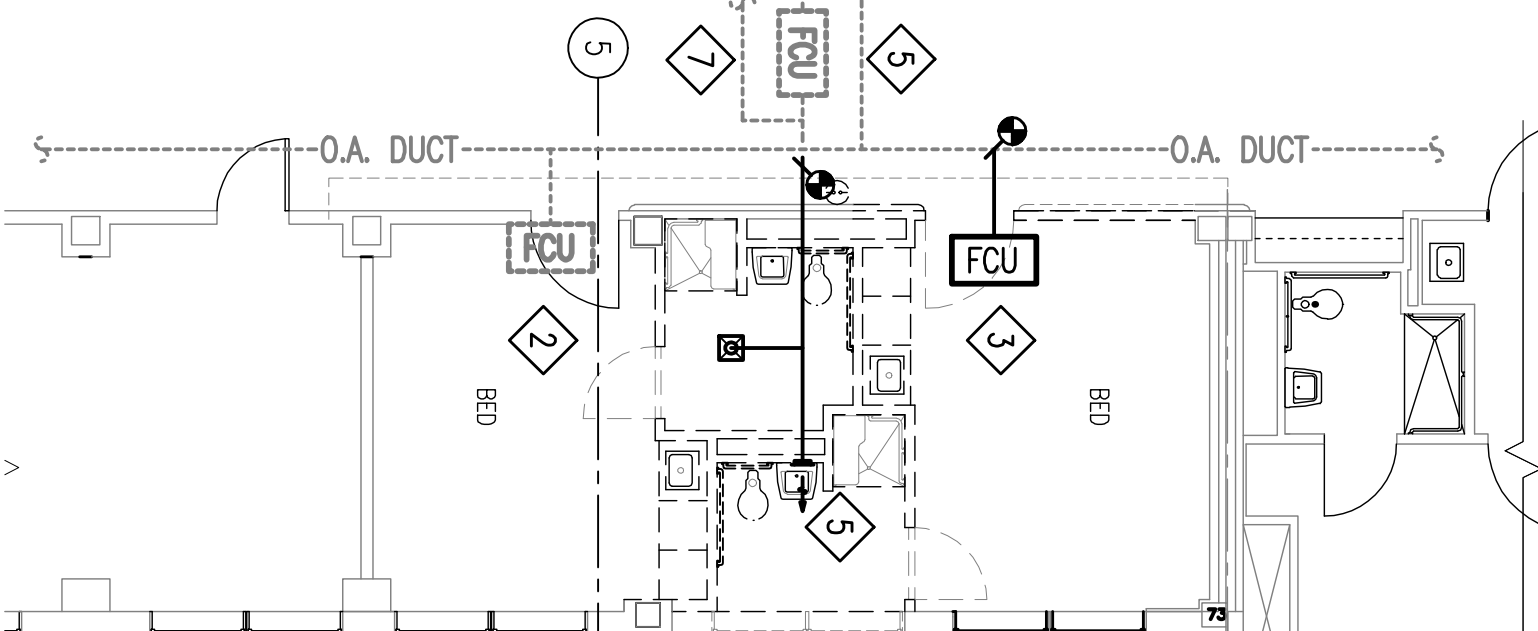
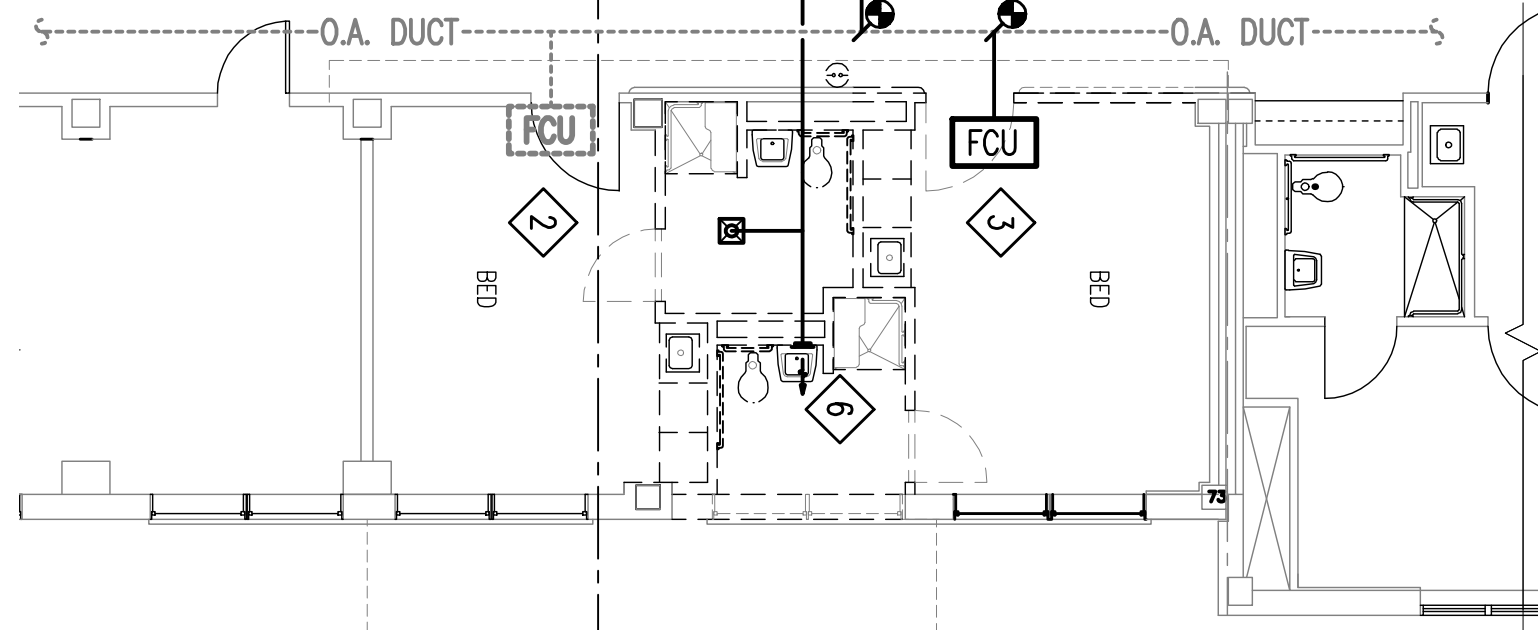
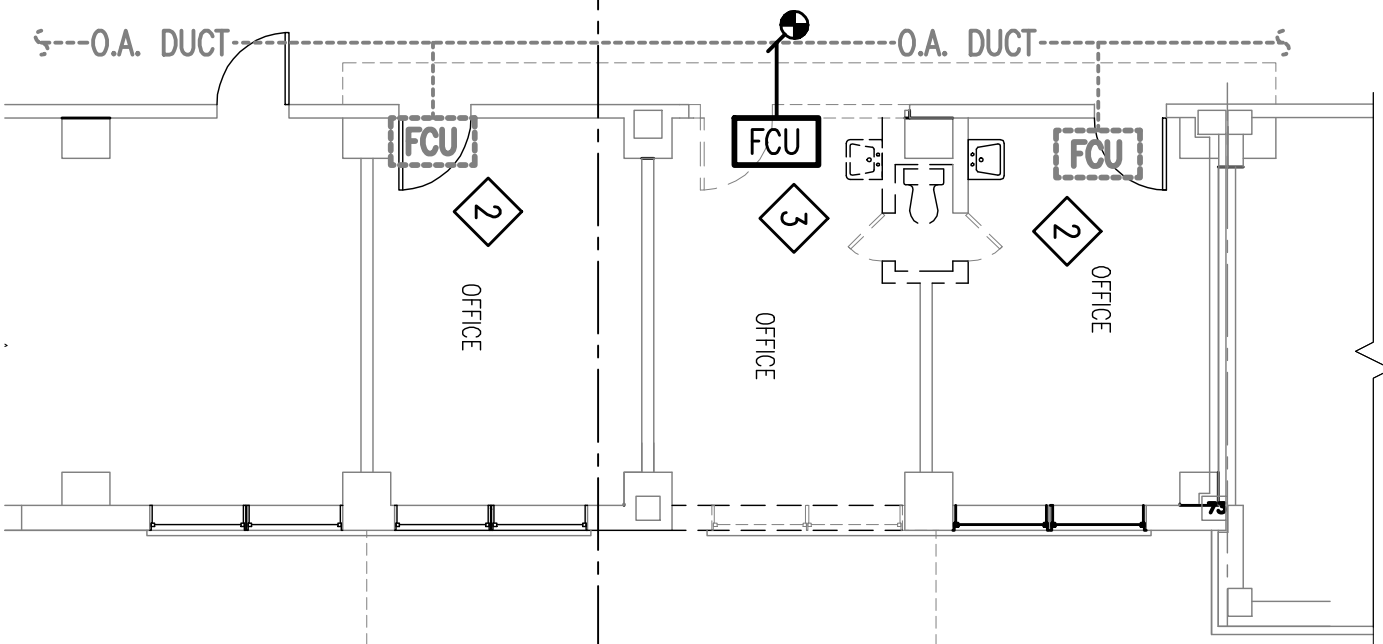
**DUCTWORK DEMOLITION
3RD FLOOR – MECHANICAL**

SCALE: 1/8" = 1'-0"

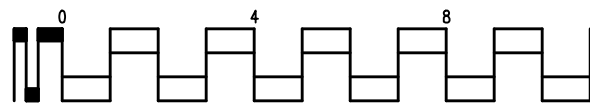


**DUCTWORK DEMOLITION
4TH FLOOR & ELEVATOR ROOF – MECHANICAL**

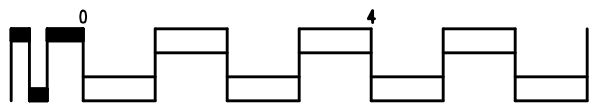
SCALE: 1/8" = 1'-0"



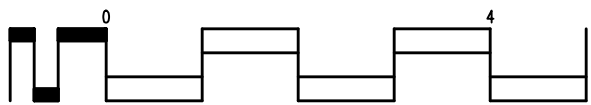
one-quarter inch = one foot



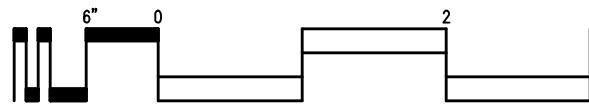
three-eighths inch = one foot



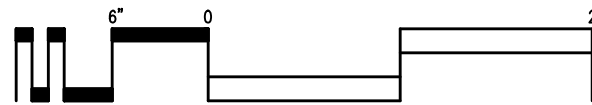
one-half inch = one foot



three-quarters inch = one foot

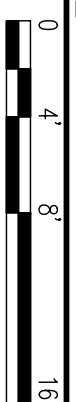


one inch = one foot



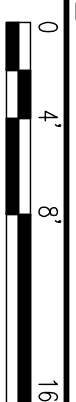
**DUCTWORK DEMOLITION
5TH FLOOR – MECHANICAL**

SCALE: 1/8" = 1'-0"



**DUCTWORK DEMOLITION
6TH FLOOR – MECHANICAL**

SCALE: 1/8" = 1'-0"



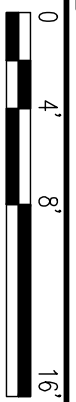
**DUCTWORK DEMOLITION
7TH FLOOR – MECHANICAL**

SCALE: 1/8" = 1'-0"



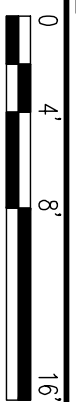
**DUCTWORK DEMOLITION
8TH FLOOR – MECHANICAL**

SCALE: 1/8" = 1'-0"



**DUCTWORK DEMOLITION
9TH FLOOR – MECHANICAL**

SCALE: 1/8" = 1'-0"



100% REVIEW

SUBMITTAL

05-25-2011

Project No.

VA256-C-1047

**2ND FLOOR OUTPATIENT
MENTAL HEALTH**

Building Number

Bldg 1 SOUTH WING

Checked

PJC

Drawn

JSW

Drawing Title

**ENLARGED STAIR
DUCTWORK DEMOLITION
FLOOR PLANS-MECHANICAL**

Approved Project Engineer

**VA MEDICAL CENTER
SHREVEPORT, LOUISIANA**

Dwg. No.

MD103

100% REVIEW

SUBMITTAL

05-25-2011

Project No.

VA256-C-1047

Checked

PJC

Drawn

JSW

Dwg. No.

MD103

100% REVIEW

SUBMITTAL

05-25-2011

Project No.

VA256-C-1047

Checked

PJC

Drawn

JSW

Dwg. No.

MD103

100% REVIEW

SUBMITTAL

05-25-2011

Project No.

VA256-C-1047

Checked

PJC

Drawn

JSW

Dwg. No.

MD103

100% REVIEW

SUBMITTAL

05-25-2011

Project No.

VA256-C-1047

Checked

PJC

Drawn

JSW

Dwg. No.

MD103

100% REVIEW

SUBMITTAL

05-25-2011

Project No.

VA256-C-1047

Checked

PJC

Drawn

JSW

Dwg. No.

MD103

100% REVIEW

SUBMITTAL

05-25-2011

Project No.

VA256-C-1047

Checked

PJC

Drawn

JSW

Dwg. No.

MD103

100% REVIEW

SUBMITTAL

05-25-2011

Project No.

VA256-C-1047

Checked

PJC

Drawn

JSW

Dwg. No.

MD103

100% REVIEW

SUBMITTAL

05-25-2011

Project No.

VA256-C-1047

Checked

PJC

Drawn

JSW

Dwg. No.

MD103

100% REVIEW

SUBMITTAL

05-25-2011

Project No.

VA256-C-1047

Checked

PJC

Drawn

JSW

Dwg. No.

MD103

100% REVIEW

SUBMITTAL

05-25-2011

Project No.

VA256-C-1047

Checked

PJC

Drawn

JSW

Dwg. No.

MD103

100% REVIEW

SUBMITTAL

05-25-2011

Project No.

VA256-C-1047

Checked

PJC

Drawn

JSW

Dwg. No.

MD103

100% REVIEW

SUBMITTAL

05-25-2011

Project No.

VA256-C-1047

Checked

PJC

Drawn

JSW

Dwg. No.

MD103

100% REVIEW

SUBMITTAL

05-25-2011

Project No.

VA256-C-1047

Checked

PJC

Drawn

JSW

Dwg. No.

MD103

100% REVIEW

SUBMITTAL

05-25-2011

Project No.

VA256-C-1047

Checked

PJC

Drawn

JSW

Dwg. No.

MD103

100% REVIEW

SUBMITTAL

05-25-2011

Project No.

VA256-C-1047

Checked

PJC

Drawn

JSW

Dwg. No.

MD103

100% REVIEW

SUBMITTAL

05-25-2011

Project No.

VA256-C-1047

Checked

PJC

Drawn

JSW

Dwg. No.

MD103

100% REVIEW

SUBMITTAL

05-25-2011

Project No.

VA256-C-1047

Checked

PJC

Drawn

JSW

Dwg. No.

MD103

100% REVIEW

SUBMITTAL

05-25-2011

Project No.

VA256-C-1047

Checked

PJC