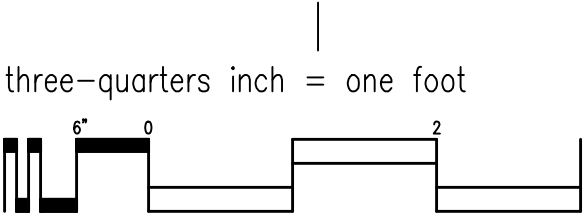
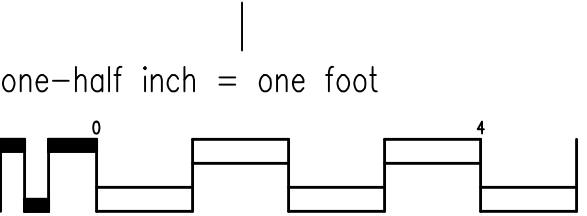


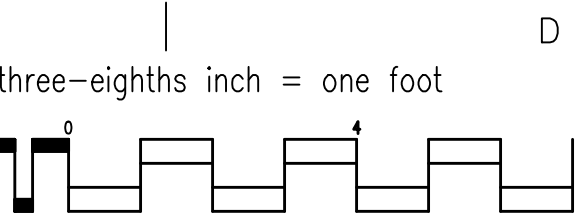
B
one inch = one foot



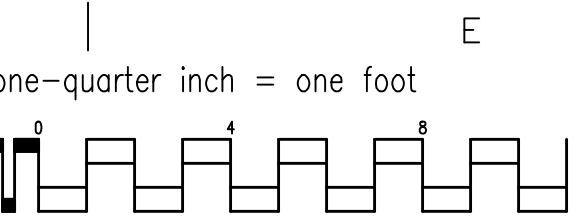
three-quarters inch = one foot



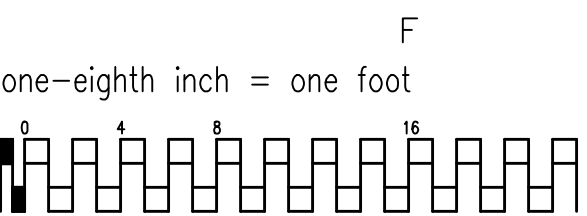
one-half inch = one foot



three-eighths inch = one foot

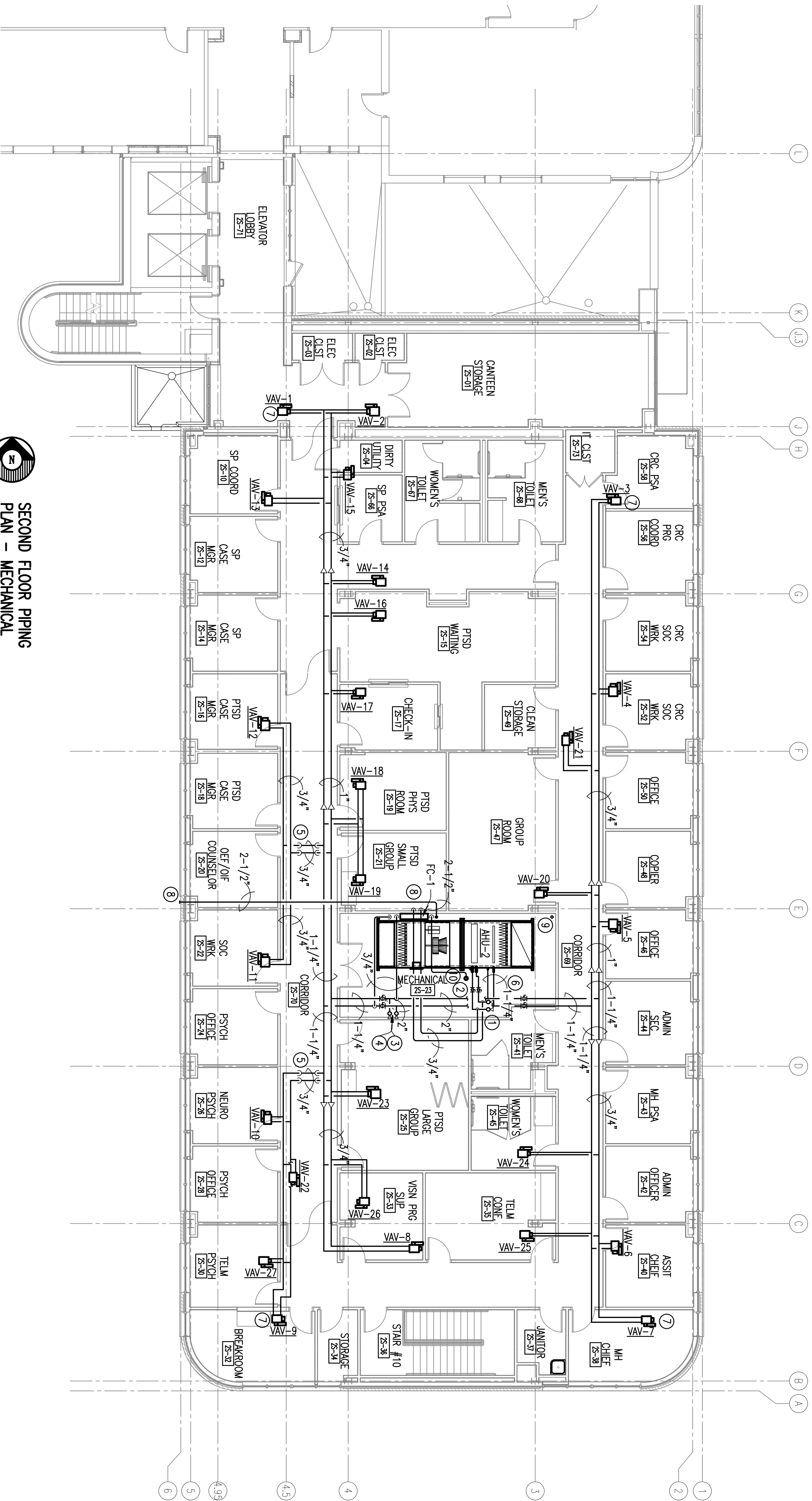


one-quarter inch = one foot



F

one-eighth inch = one foot



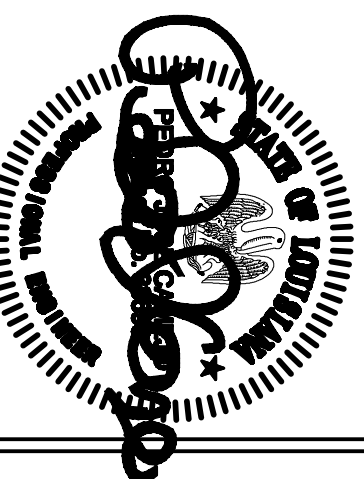
NOTES:


(THIS SHEET ONLY)

- ① 6" CWS/CWR FROM BELOW, STUB UP TO 8'-0" AFF AND FINISH WITH BUTTERFLY VALVES AND CAPPED FLANGE CONNECTION FOR FUTURE FLOORS ABOVE.
- ② RUN 3" CWS/CWR TO AHU-2 COOLING COIL AND CONNECT PIPING TO COIL TO AVOID INTERFERENCE WITH AHU-2 DOORS.
- ③ 3" FMS/HMR FROM MECHANICAL ROOM BELOW. RUN UP TO 8'-0" AFF AND FINISH WITH BALL VALVES AND CAPPED FLANGED CONNECTION FOR FUTURE FLOORS ABOVE.
- ④ PROVIDE 2" FMS/HMR TAKE OFF FROM RISER FOR THIS FLOOR. PROVIDE 2" FULL PORT BALL VALVES AT TAKE OFF.
- ⑤ PIPING UP OVER DUCT THEN DOWN.
- ⑥ CONNECT 1-1/4" FMS/HMR TO AHU-2 PREHEAT COIL PER PREHEAT COIL CONNECTION DETAIL. COORDINATE PIPING WITH AHU ACCESS DOORS.
- ⑦ PROVIDE THIS TERMINAL WITH 3 WAY CONTROL VALVE PER DETAIL. TYPICAL OF 4.
- ⑧ EXTEND 2½" STEAM PER VENT PIPE FROM BELOW VENT STEAM PIPE TO EXTERIOR OF BUILDING TO THIS APPROXIMATE LOCATION. INSULATE PIPING.
- ⑨ 3" HIGH PRESSURE STEAM PIPE FROM BELOW. EXTEND TO 4'-0" AFF AND PERMANENTLY CAP AND INSULATE.
- ⑩ FLOOR DRAIN. SEE PLUMBING FOR SIZE, DETAIL, AND FLOOR LOCATION.

Toland ♦ Mizell ♦ Molnar, LLC

SUITE 200
ATLANTA, GA, 30318
404-214-9774




**SECOND FLOOR PIPING
PLAN – MECHANICAL**
 SCALE: 1/8" = 1'-0"

SCALE: 1/8" = 1'-0"



Drawing Title

SECOND FLOOR PIPING PLAN - MECHANICAL

Approved Project Engineer

3.0 FLOOR OUTPATIENT MENTAL HEALTH

Date _____

**100% REVIEW
SUBMITTAL**

Project No.

VA256-C-1047

| | |
|---------|-------|
| Checked | Drawn |
|---------|-------|

PJC JSW

**VA MEDICAL CENTER
SHREVEPORT, LOUISIANA**

M101 Dwg. of

Veterans
Administration