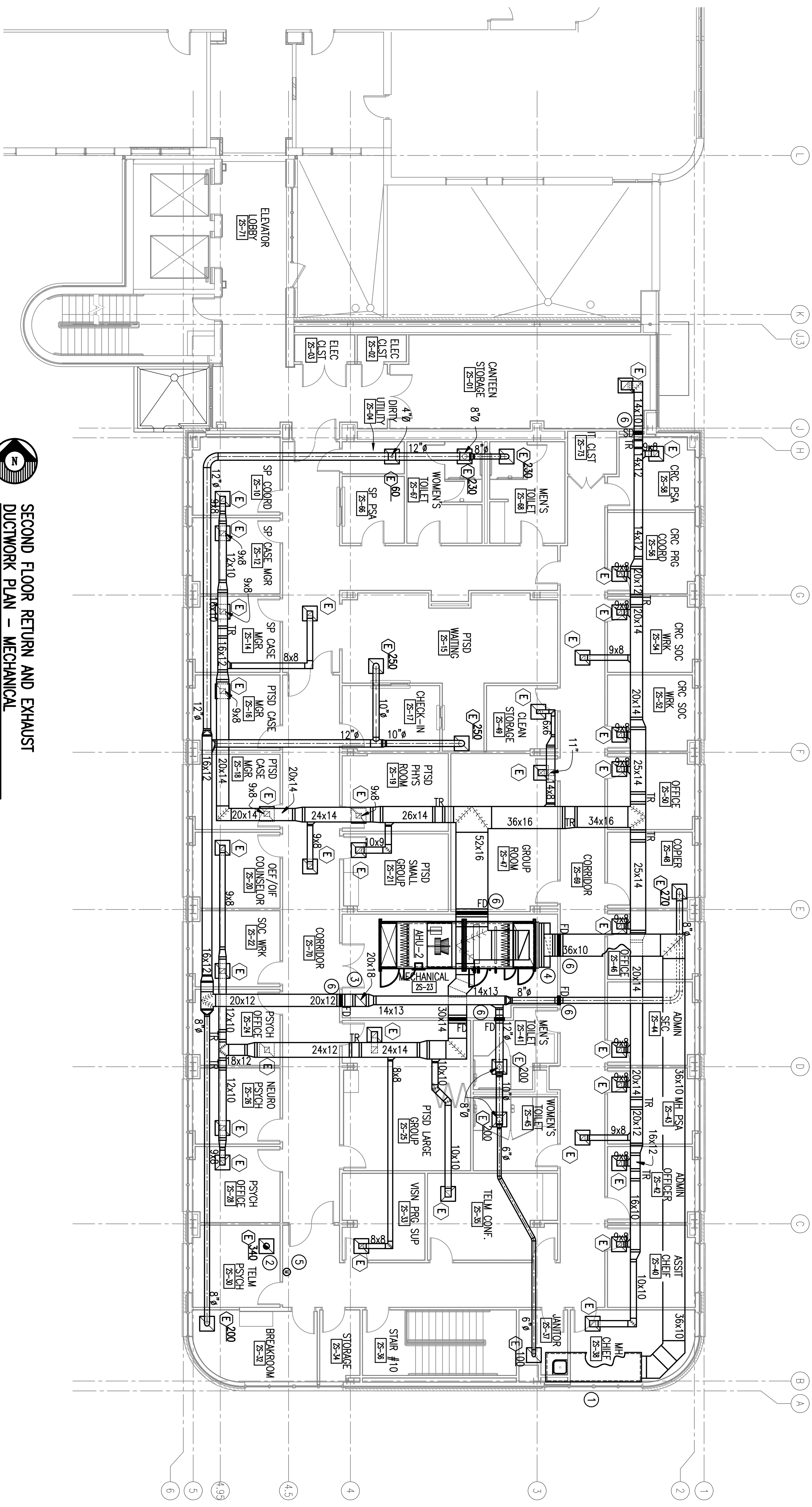



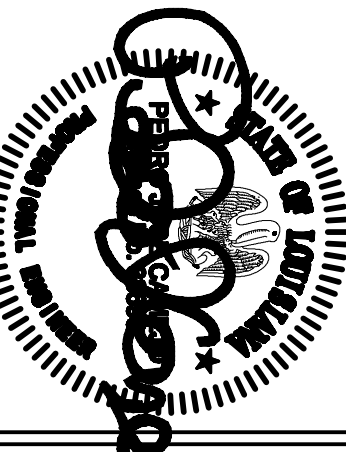
- NOTES:**  
(THIS SHEET ONLY)
- 1 INSULATED 48"x12"x156" PLENUM, ATTACH TO OUTDOOR AIR LOUVER. SEE ARCHITECTURAL.
  - 2 10"Ø EXHAUST DUCT UP TO EF-4. TERMINATE WITH 4" DISCHARGE DUCT 10'-0" ABOVE ROOF.
  - 3 20x18 EXHAUST UP TO EF-5 ON ROOF.
  - 4 TRANSITION IN THE VERTICAL FROM 36x10 TO AHU OPENING.
  - 5 ISOLATION ROOM PRESSURE MONITOR AND LOCAL ALARM. SEE CONTROLS SPECIFICATIONS. MOUNT 60" A.F.F.
  - 6 FIRE DAMPER/SMOKE DAMPER AS INDICATED. SEE DETAILS AND SPECIFICATIONS.



**SECOND FLOOR RETURN AND EXHAUST  
DUCTWORK PLAN – MECHANICAL**  
SCALE: 1/8" = 1'-0"



**Toland ♦ Mizell ♦ Molnar, LLC**  
590 MEANS STREET NW,  
SUITE 200  
ATLANTA, GA, 30318  
404-214-9774



Project Title  
**SECOND FLOOR RETURN  
AND EXHAUST DUCTWORK  
PLAN – MECHANICAL**

Approved Project Engineer

Project Title  
**2ND FLOOR OUTPATIENT  
MENTAL HEALTH**

Building Number  
**BLDG 1 SOUTH WING**

Location  
**VA MEDICAL CENTER  
SHREVEPORT, LOUISIANA**

Date  
05-25-2011

Project No.  
VA256-C-1047

DRAWING NO.  
**M103**

Dwg. of

**100% REVIEW  
SUBMITTAL**

**Veterans  
Administration**