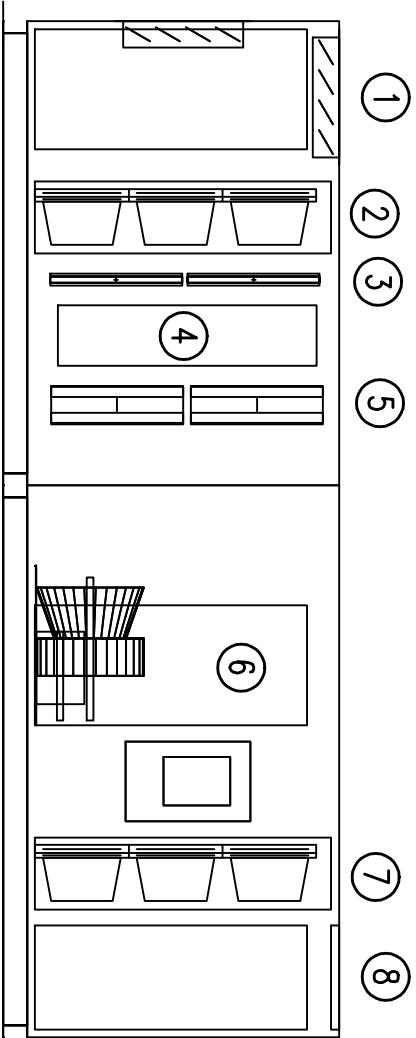
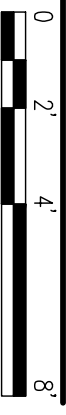


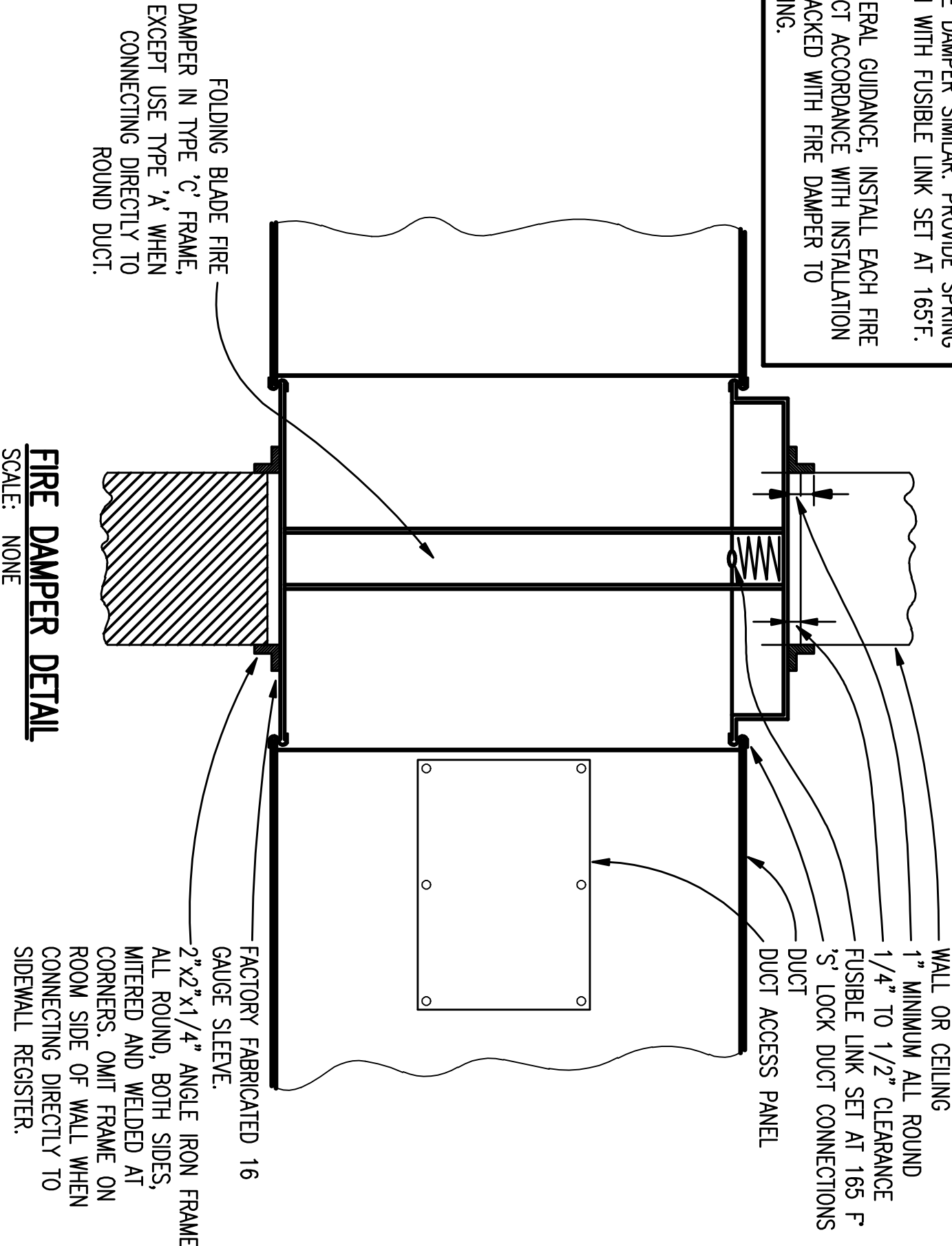
- NOTES:**  
(AIR HANDLING UNIT DETAIL)
- 1 OUTSIDE AND RETURN DAMPERS
  - 2 PREFILTERS/INTERMEDIATE FILTERS
  - 3 PRE HEAT COIL
  - 4 COIL ACCESS DOOR
  - 5 COOLING COIL
  - 6 FAN SECTION
  - 7 DIFFUSER/FINAL FILTERS
  - 8 DISCHARGE PLENUM



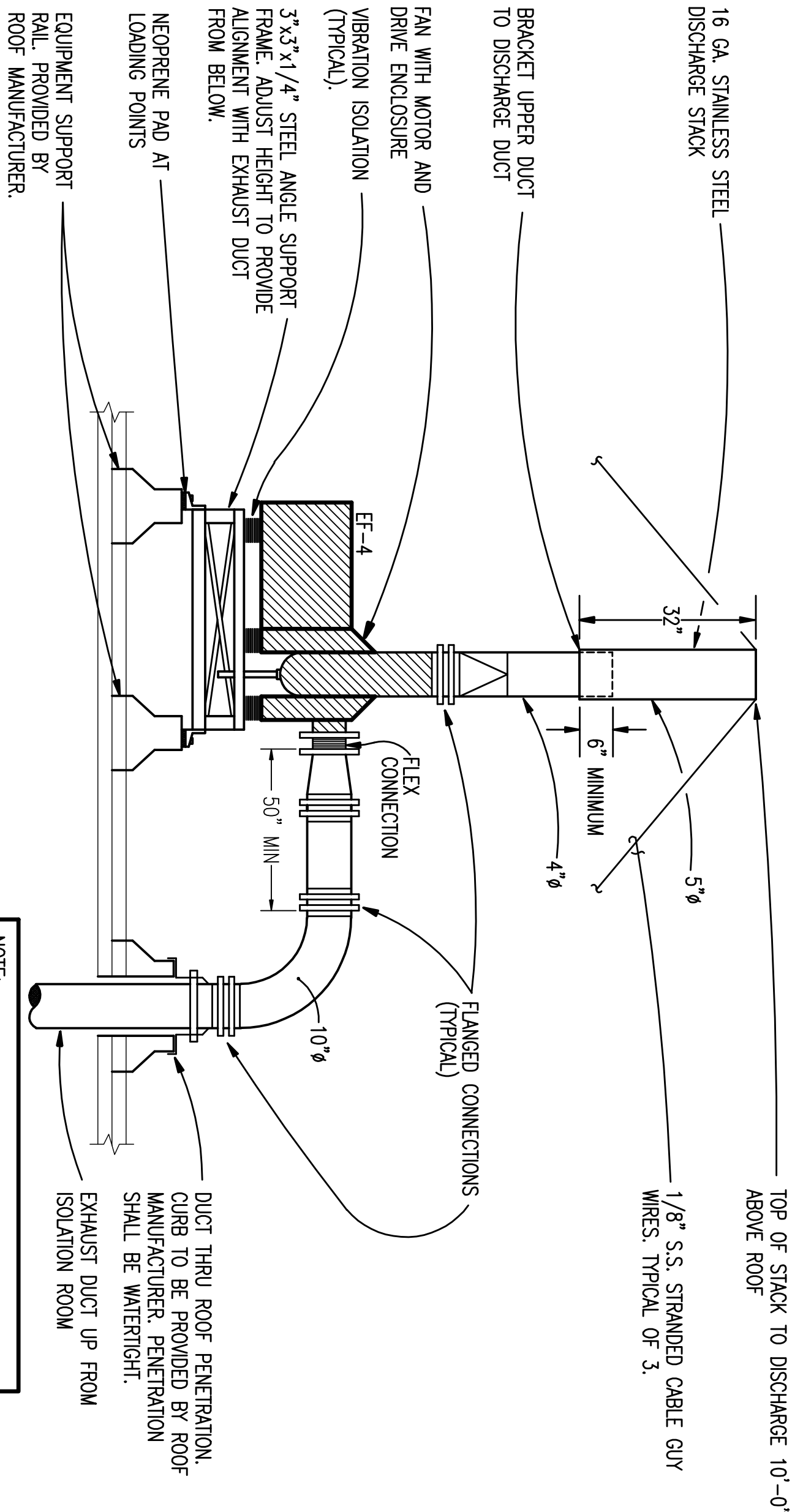
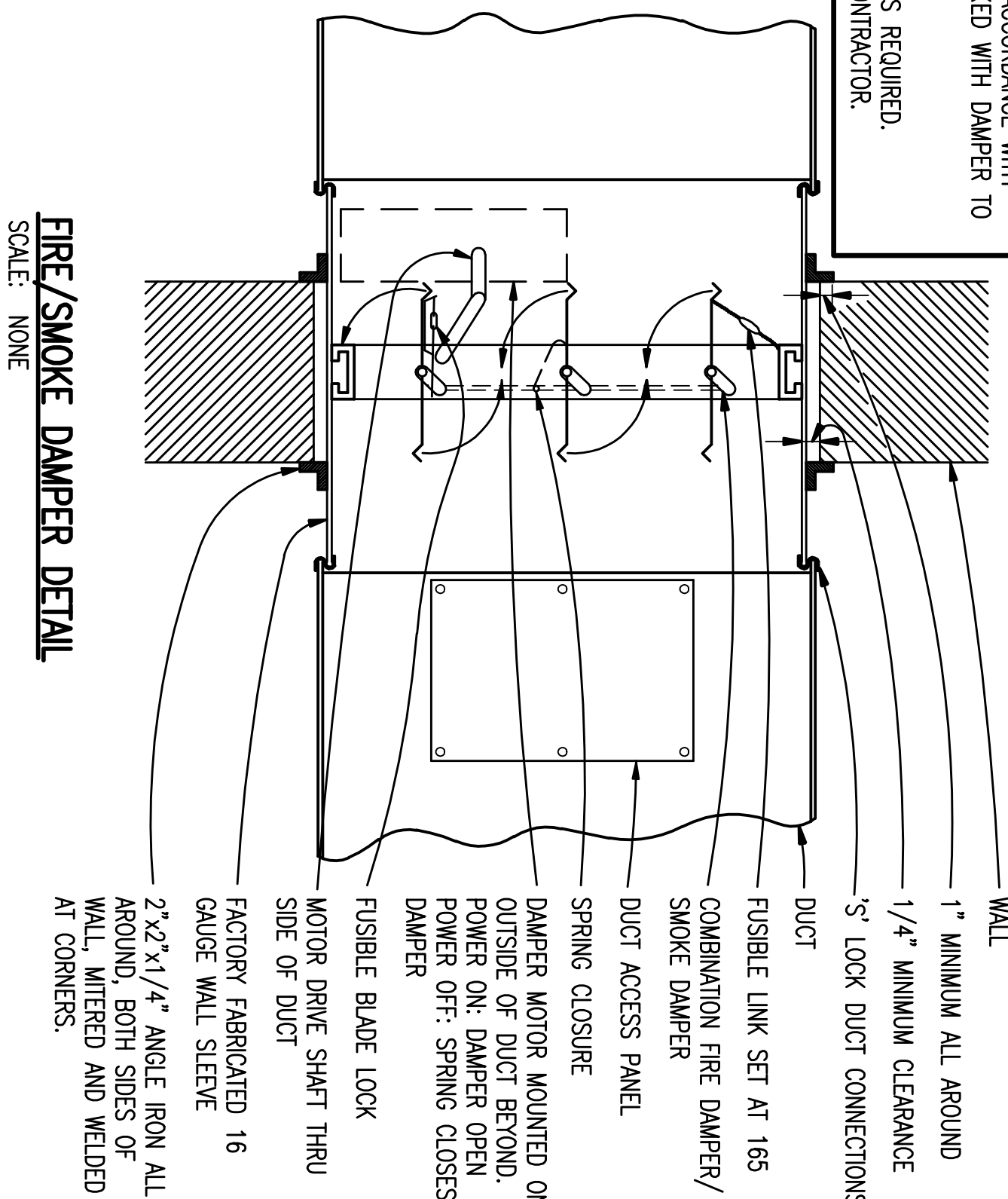
**AIR HANDLING UNIT DETAIL**  
SCALE: 1/4" = 1'-0"



- NOTES:**
- A. HORIZONTAL FIRE DAMPER SIMILAR. PROVIDE SPRING LOADED CURTAIN WITH FUSIBLE LINK SET AT 165°F.
  - B. DETAIL FOR GENERAL GUIDANCE. INSTALL EACH FIRE DAMPER IN STRICT ACCORDANCE WITH INSTALLATION INSTRUCTIONS PACKED WITH FIRE DAMPER TO ENSURE UL RATING.



- NOTES:**
1. DETAIL FOR GENERAL GUIDANCE. INSTALL EACH FIRE/SMOKE DAMPER IN STRICT ACCORDANCE WITH INSTALLATION INSTRUCTIONS PACKED WITH DAMPER TO ENSURE UL RATING.
  2. PROVIDE 24V OR 120V POWER AS REQUIRED. COORDINATE WITH ELECTRICAL CONTRACTOR.

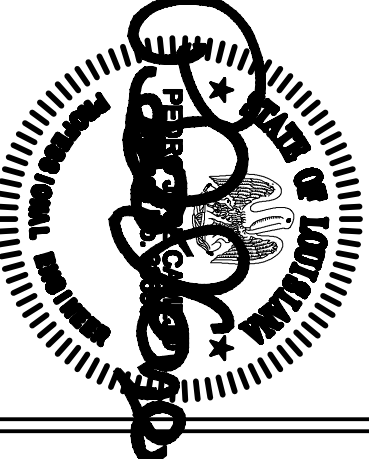


**NOTE:**  
CURB AND EQUIPMENT RAIL SUPPORTS SHALL MATCH ROOF SLOPE SO THAT TOPS ARE LEVEL. ALL EQUIPMENT, DUCT, ETC. ABOVE THE ROOF LINE SHALL BE PAINTED TO MATCH ROOF AS PER ARCHITECTURAL DRAWINGS AND SPECIFICATIONS.

**ISOLATION EXHAUST FAN DETAIL**  
SCALE: NONE

**FIRE/SMOKE DAMPER DETAIL**  
SCALE: NONE

**Toland ♦ Mizell ♦ Molnar, LLC**  
590 MEANS STREET NW,  
SUITE 200  
ATLANTA, GA, 30318  
404-214-9774



|                           |                   |  |       |
|---------------------------|-------------------|--|-------|
| Drawing Title             |                   | Project Title                              |       |
| DETAILS<br>MECHANICAL     |                   | 2ND FLOOR OUTPATIENT<br>MENTAL HEALTH      |       |
| Approved Project Engineer | Building Number   | Checked                                    | Drawn |
|                           | BLDG 1 SOUTH WING | PJC  | WSS   |
|                           | Location          | VA MEDICAL CENTER<br>SHREVEPORT, LOUISIANA |       |
| Date                      |                   | Project No.                                |       |
| 05-25-2011                |                   | VA256-C-1047                               |       |
| Dwg. No.                  |                   | DRAWS NO.                                  |       |
| M502                      |                   |  |       |
| Veterans Administration   |                   |  |       |

**100% REVIEW**  
NORTH  
SUBMITTAL