

A

1

2

3

4

5

6

7

8

A

DEMOLITION WORK KEYED NOTES:
(THIS DRAWING ONLY)

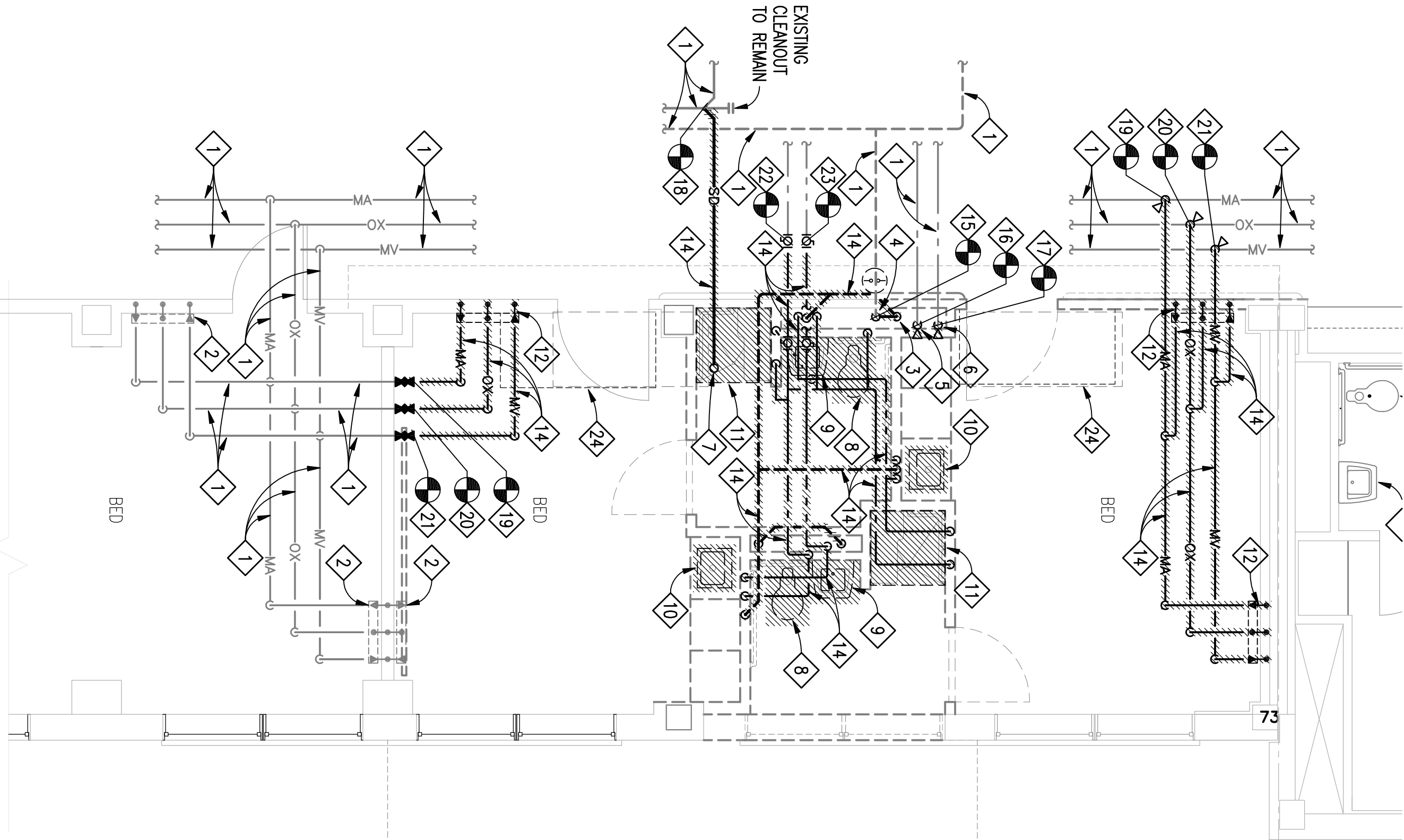
- 1 EXISTING PLUMBING PIPING TO REMAIN.
- 2 EXISTING WALL MOUNTED MEDICAL GAS OUTLET AND INLET STATIONS TO REMAIN.
- 3 REMOVE EXISTING SANITARY SEWER RISER, REPAIR FLOOR TO MATCH EXISTING FINISHED FLOOR. REFER TO ARCHITECTURAL DRAWINGS FOR ADDITION FLOOR REPAIR INFORMATION.
- 4 REMOVE EXISTING SANITARY VENT RISER, REPAIR FLOOR TO MATCH EXISTING FINISHED FLOOR. REFER TO ARCHITECTURAL DRAWINGS FOR ADDITION FLOOR REPAIR INFORMATION.
- 5 REMOVE EXISTING DOMESTIC COLD WATER SUPPLY RISER, REPAIR FLOOR TO MATCH EXISTING FINISHED FLOOR. REFER TO ARCHITECTURAL DRAWINGS FOR ADDITION FLOOR REPAIR INFORMATION.
- 6 REMOVE EXISTING DOMESTIC HOT WATER SUPPLY RISER, REPAIR FLOOR TO MATCH EXISTING FINISHED FLOOR. REFER TO ARCHITECTURAL DRAWINGS FOR ADDITION FLOOR REPAIR INFORMATION.
- 7 REMOVE EXISTING STORM DRAINAGE RISE TO EXISTING ROOF DRAIN. REPAIR FLOOR TO MATCH EXISTING FINISHED FLOOR. REFER TO ARCHITECTURAL DRAWINGS FOR ADDITION FLOOR REPAIR INFORMATION.
- 8 REMOVE AND DISCARD EXISTING FLOOR MOUNTED WATER CLOSET, FLUSH VALVE, FLOOR FLANGE, AND ALL ASSOCIATED PIPING.
- 9 REMOVE AND DISCARD EXISTING WALL HUNG LAVATORY, FAUCET, P-TRAP, SUPPLEES, STOPS, WALL CARRIER, AND ALL ASSOCIATED PIPING.
- 10 REMOVE AND DISCARD EXISTING COUNTER-TOP MOUNTED LAVATORY, FAUCET, P-TRAP, SUPPLEES, STOPS, WALL CARRIER, AND ALL ASSOCIATED PIPING.
- 11 REMOVE AND DISCARD EXISTING SHOWER, MIXING VALVE, SHOWERHEAD, SUPPLEES, STOPS, P-TRAP, STALL, AND ALL ASSOCIATED PIPING.
- 12 REMOVE EXISTING WALL MOUNTED MEDICAL GAS OUTLET AND INLET STATIONS AND ALL ASSOCIATED PIPING. TURN MOUNTED MEDICAL GAS OUTLET AND INLET STATIONS OVER TO GOVERNMENT.
- 13 REMOVE AND DISCARD EXISTING ROOF DRAIN AND ALL ASSOCIATED PIPING.
- 14 REMOVE EXISTING PLUMBING PIPING AS INDICATED. REFER TO PLUMBING DRAWING PB01 FOR PIPING DESIGNATIONS.
- 15 CUT AND REMOVE EXISTING SANITARY VENT PIPING ABOVE CEILING AT APPROXIMATE LOCATION INDICATED. PREPARE AND PROTECT PIPING FOR CONNECTION OF NEW WORK.
- 16 CUT AND REMOVE EXISTING DOMESTIC COLD WATER SUPPLY PIPING ABOVE CEILING AT APPROXIMATE LOCATION INDICATED. PREPARE AND PROTECT PIPING FOR CONNECTION OF NEW WORK.
- 17 CUT AND REMOVE EXISTING DOMESTIC HOT WATER SUPPLY/RETURN PIPING ABOVE CEILING AT APPROXIMATE LOCATION INDICATED. PREPARE AND PROTECT PIPING FOR CONNECTION OF NEW WORK.
- 18 CUT AND REMOVE EXISTING STORM DRAINAGE PIPING ABOVE CEILING AT APPROXIMATE LOCATION INDICATED. PREPARE AND PROTECT PIPING FOR CONNECTION OF NEW WORK.
- 19 CUT AND REMOVE EXISTING MEDICAL AIR PIPING ABOVE CEILING AT APPROXIMATE LOCATION INDICATED. PROVIDE 3-PIECE LOCKABLE BALL VALVE ABOVE CEILING LOCKED CLOSED.
- 20 CUT AND REMOVE EXISTING OXYGEN PIPING ABOVE CEILING AT APPROXIMATE LOCATION INDICATED. PROVIDE 3-PIECE LOCKABLE BALL VALVE ABOVE CEILING LOCKED CLOSED.
- 21 CUT AND REMOVE EXISTING MEDICAL VACUUM PIPING ABOVE CEILING AT APPROXIMATE LOCATION INDICATED. PROVIDE 3-PIECE LOCKABLE BALL VALVE ABOVE CEILING LOCKED CLOSED.
- 22 CUT AND REMOVE EXISTING DOMESTIC COLD WATER SUPPLY PIPING ABOVE CEILING AT APPROXIMATE LOCATION INDICATED. PREPARE AND PROTECT PIPING FOR CONNECTION OF NEW WORK. PROVIDE FULL PORT BALL VALVE ABOVE CEILING.
- 23 CUT AND REMOVE EXISTING DOMESTIC HOT WATER SUPPLY/RETURN PIPING ABOVE CEILING AT APPROXIMATE LOCATION INDICATED. PREPARE AND PROTECT PIPING FOR CONNECTION OF NEW WORK. PROVIDE FULL PORT BALL VALVE ABOVE CEILING.
- 24 HVAC EQUIPMENT. REFER TO MECHANICAL DRAWINGS FOR LOCATION OF EQUIPMENT.

ROOF OVER
8th FLOOR

EXISTING VENT
REFER TO ARCHITECTURAL

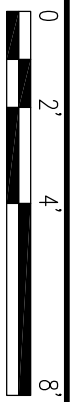
9th FLOOR

ROOF OVER
8th FLOOR



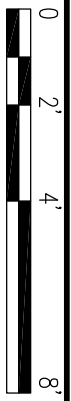
ENLARGED DEMOLITION FLOOR PLAN
8TH FLOOR STAIRS - PLUMBING

SCALE: 1/4" = 1'-0"



ENLARGED DEMOLITION FLOOR PLAN
9TH FLOOR STAIRS - PLUMBING

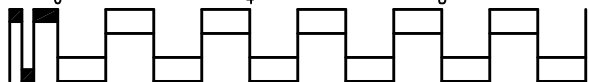
SCALE: 1/4" = 1'-0"



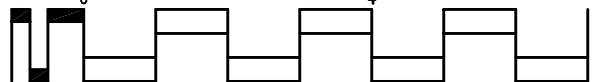
one-eighth inch = one foot



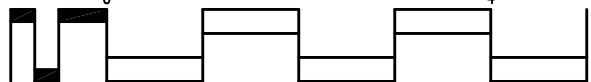
one-quarter inch = one foot



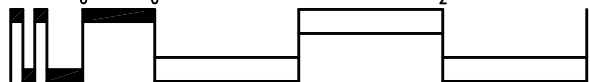
three-eighths inch = one foot



one-half inch = one foot



three-quarters inch = one foot

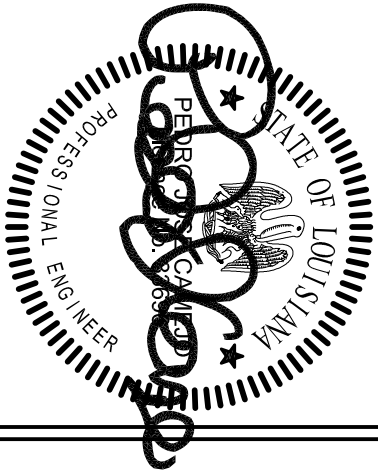


one inch = one foot



Revisions	Date

Toland ♦ Mizell ♦ Molnar, LLC
590 MEANS STREET NW,
SUITE 200
ATLANTA, GA, 30318
404-214-9774



Drawing Title
**ENLARGED DEMO FLOOR
PLANS 8TH AND 9TH FLOOR
STAIRS - PLUMBING**

Approved Project Engineer

Project Title
**2ND FLOOR OUTPATIENT
MENTAL HEALTH**

Date
05-25-2011

Project No.
VA256-C-1047

Building Number
BLDG 1 SOUTH WING

Checked
RDT

Drawn
DLB

Location
VA MEDICAL CENTER
SHREVEPORT, LOUISIANA

DRAWING NO.
PD404

Day - 01

**Veterans
Administration**

**100% REVIEW
SUBMITTAL**