

Revisions	Date

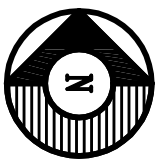
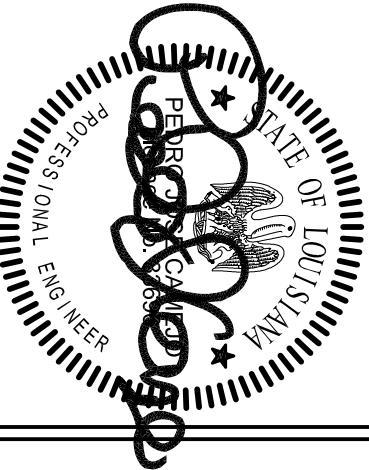
Toland ♦ Mizell ♦ Molnar, LLC

590 MEANS STREET NW,

SUITE 200

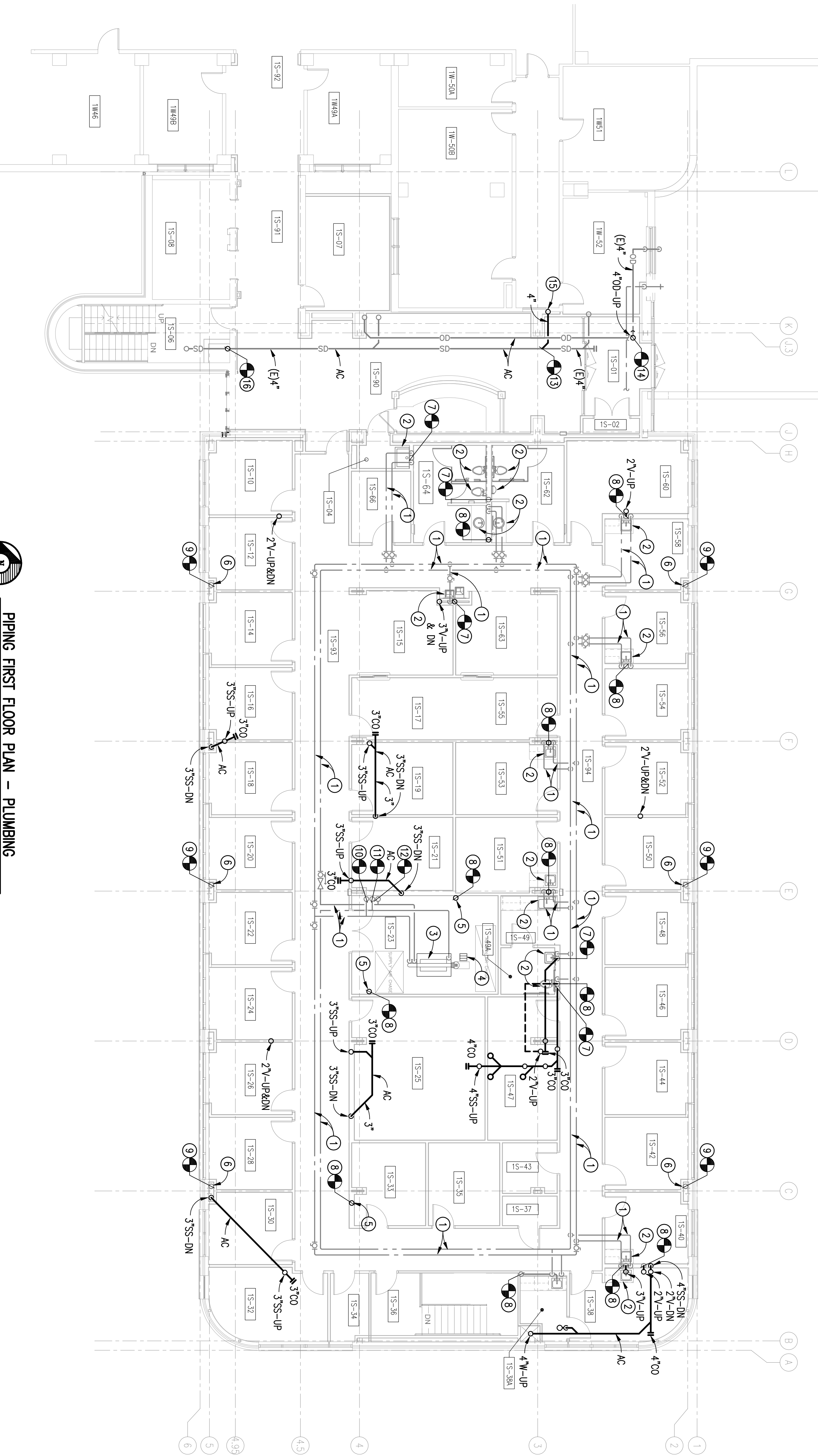
ATLANTA, GA, 30318

404-214-9774



PIPING FIRST FLOOR PLAN – PLUMBING

SCALE: 1/8" = 1'-0"



NEW WORK KEYED NOTES:

(THIS SHEET ONLY)

- EXISTING PLUMBING PIPING TO REMAIN.
- EXISTING PLUMBING FIXTURES TO REMAIN.
- EXISTING STEAM GENERATOR WATER HEATER TO REMAIN.
- EXISTING FLOOR DRAIN TO REMAIN.
- EXISTING VENT RISER. TO REMAIN.
- EXISTING STORM DRAINAGE RISER TO REMAIN.
- CONNECT NEW SANITARY SEWER PIPING TO EXISTING SANITARY SEWER PIPING AT APPROXIMATE LOCATION INDICATED. ROUTE SANITARY SEWER PIPING ABOVE CEILING AS SHOWN.
- CONNECT NEW VENT PIPING TO EXISTING VENT PIPING AT APPROXIMATE LOCATION INDICATED. ROUTE SANITARY SEWER PIPING ABOVE CEILING AS SHOWN.
- CONNECT NEW STORM DRAINAGE PIPING TO EXISTING STORM DRAINAGE PIPING AT APPROXIMATE LOCATION INDICATED.
- CONNECT NEW DOMESTIC COLD WATER SUPPLY PIPING TO EXISTING DOMESTIC COLD WATER SUPPLY RISER IN MECHANICAL ROOM AT APPROXIMATE LOCATION INDICATED.
- CONNECT NEW DOMESTIC HOT WATER SUPPLY PIPING TO EXISTING DOMESTIC HOT WATER SUPPLY RISER IN MECHANICAL ROOM AT APPROXIMATE LOCATION INDICATED.
- CONNECT NEW DOMESTIC HOT WATER RETURN PIPING TO EXISTING DOMESTIC HOT WATER RETURN RISER IN MECHANICAL ROOM AT APPROXIMATE LOCATION INDICATED.
- CONNECT NEW 4" STORM DRAINAGE PIPING TO EXISTING STORM DRAINAGE PIPING ABOVE CEILING AT APPROXIMATE LOCATION INDICATED.
- CONNECT NEW 4" OVERFLOW DRAINAGE PIPING TO EXISTING OVERFLOW DRAINAGE PIPING ABOVE CEILING AT APPROXIMATE LOCATION INDICATED.
- NEW 4" STORM DRAINAGE PIPING UP TO NEW ROOF DRAIN.
- CONNECT NEW 4" STORM DRAINAGE PIPING TO EXISTING STORM DRAINAGE PIPING IN PIPE CHASE AT APPROXIMATE LOCATION INDICATED.

GENERAL NOTES

- FOR ADDITIONAL INFORMATION RELATIVE TO PIPE SIZES, ROUTING, ETC. REFER TO RISER INDICATED.
- CONTRACTOR SHALL INSPECT, ROD OUT, AND/OR REPLACE AS REQUIRED ALL EXISTING SANITARY SEWER, VENT, AND STORM DRAIN PIPING PRIOR TO CONNECTING NEW PIPING.
- PRIOR TO PERFORMING ANY WORK OR PURCHASING ANY MATERIAL, THE CONTRACTOR SHALL VERIFY LOCATION OF EXISTING PLUMBING PIPING.
- CONTRACTOR SHALL REPAIR ALL WALL, FLOOR, AND SLAB DEMOLITION, PENETRATIONS REQUIRED FOR INSULATION OF THE NEW SANITARY SEWER PIPING.
- REFER TO ARCHITECTURAL DRAWINGS FOR LAYOUT AND EXACT LOCATION OF PLUMBING FIXTURES.

Drawing Title
PIPING FIRST FLOOR PLAN PLUMBING
Approved Project Engineer

Project Title
2ND FLOOR OUTPATIENT MENTAL HEALTH
Building Number
BLDG 1 SOUTH WING
Location
VA MEDICAL CENTER SHREVEPORT, LOUISIANA

Date
05-25-2011
100% REVIEW SUBMITTAL
Project No.
VA256-C-1047
Drawing No.
P102
Day - Of
8
Veterans Administration