

Revisions	Date

Toland ♦ Mizell ♦ Molnar, LLC

590 MEANS STREET NW,
SUITE 200
ATLANTA, GA, 30318
404-214-9774

Drawing Title

ENLARGED NEW WORK FLOOR PLANS 9TH AND 10TH FLOOR STAIRS – PLUMBING

Approved Project Engineer

Project Title			Project Title		
2ND FLOOR OUTPATIENT MENTAL HEALTH			2ND FLOOR OUTPATIENT MENTAL HEALTH		
Building Number	Checked	Drawn	Building Number	Checked	Drawn
BLDG 1 SOUTH WING	RDT	DLB	BLDG 1 SOUTH WING	RDT	DLB
Location	VA MEDICAL CENTER SHREVEPORT, LOUISIANA		Location	VA MEDICAL CENTER SHREVEPORT, LOUISIANA	

Date	05-25-2011
Project No.	VA256-C-1047
Drawing No.	P404
Day - of	

Veterans Administration

100% REVIEW SUBMITTAL

ENLARGED NEW WORK FLOOR PLAN
9TH FLOOR STAIRS – PLUMBING

SCALE: 1/4" = 1'-0"

0

2

4

8

ENLARGED NEW WORK FLOOR PLAN
10TH FLOOR STAIRS – PLUMBING

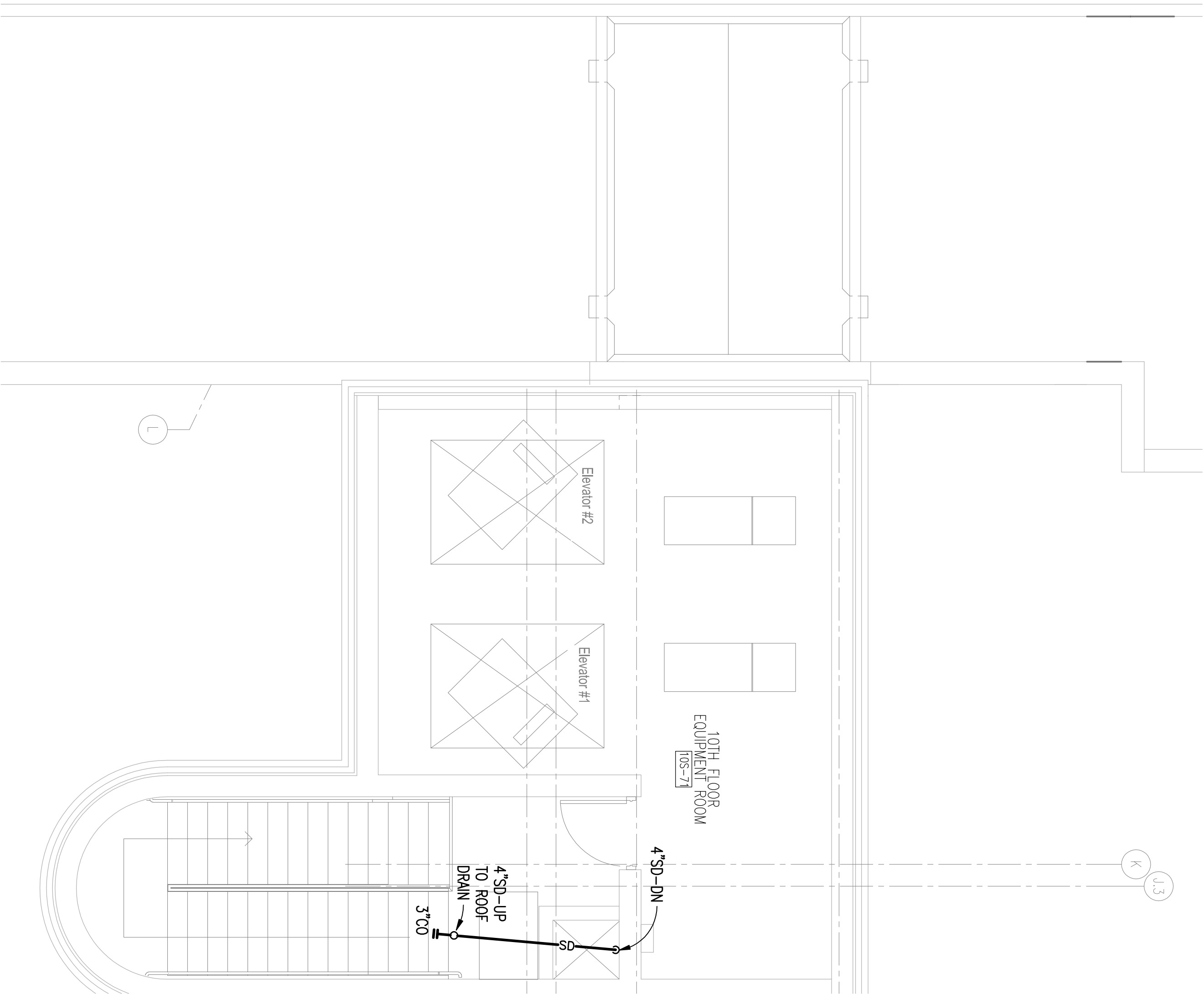
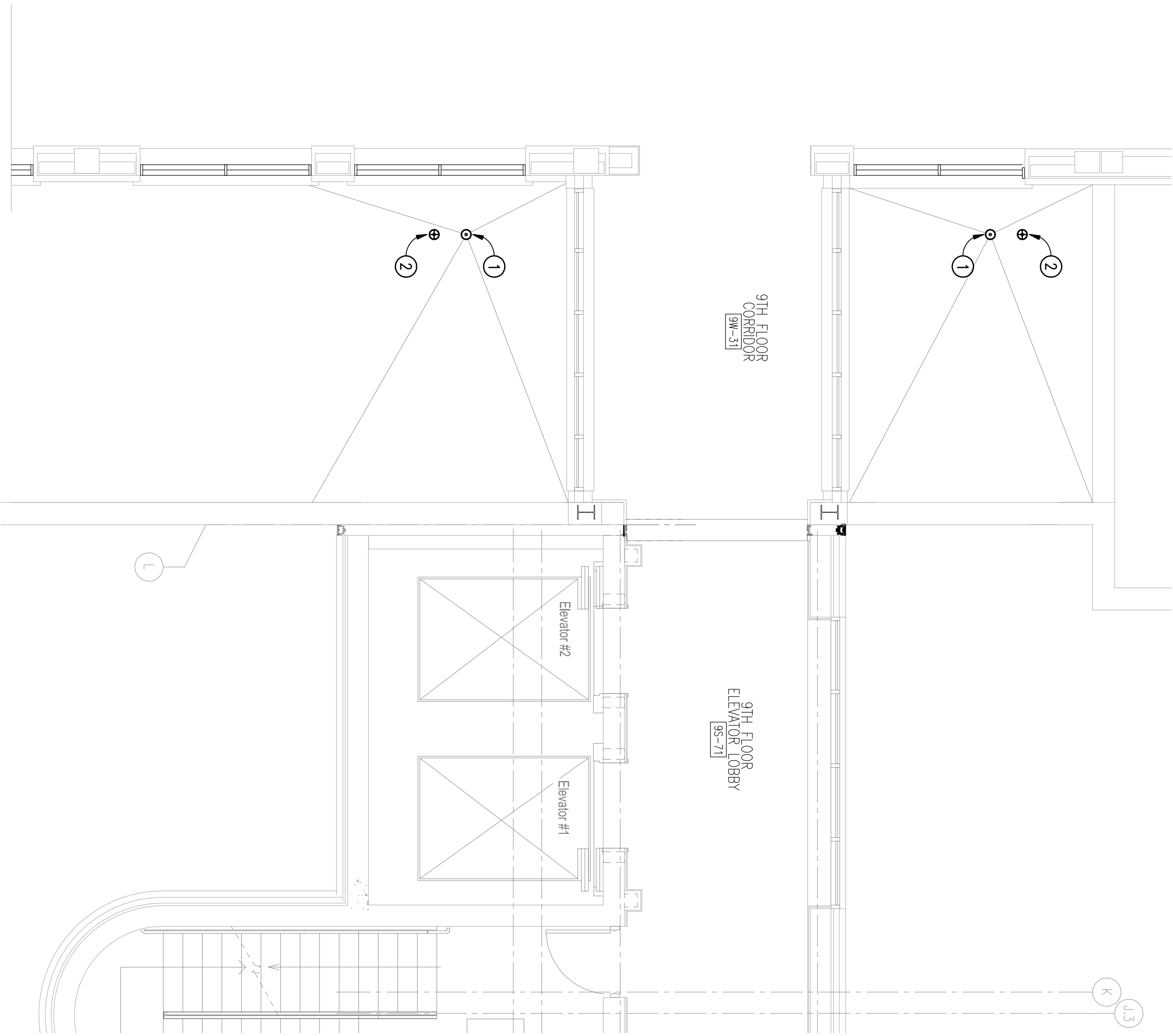
SCALE: 1/4" = 1'-0"

0

2

4

8



- NEW WORK KEYED NOTES:**
(THIS DRAWING ONLY)
- 1 PROVIDE NEW 4" ROOF DRAIN. REFER TO DETAIL ON DRAWING P501.
 - 2 PROVIDE NEW 4" OVERFLOW DRAIN WITH 2" WATER DAM. REFER TO DETAIL ON PLUMBING DRAWING P501.