

Revisions	Date

Toland♦ Mizell♦ Molnar, LLC

590 MEANS STREET NW,
SUITE 200
ATLANTA, GA, 30318
404-214-9774

Project Title

2ND FLOOR OUTPATIENT
MENTAL HEALTH

Building Number

BLDG 1 SOUTH WING

Location

VA MEDICAL CENTER
SHREVEPORT, LOUISIANA

Project No.

VA256-C-1047

Dwg. No.

E404

Approved Project Engineer

Drawing Title

EIGHT AND NINTH STAIRS
ENLARGED FLOOR PLANS
ELECTRICAL LIGHTING

Project Title

2ND FLOOR OUTPATIENT
MENTAL HEALTH

Building Number

BLDG 1 SOUTH WING

Location

VA MEDICAL CENTER
SHREVEPORT, LOUISIANA

Project No.

VA256-C-1047

Dwg. No.

E404

Approved Project Engineer

NORTH

100% REVIEW
SUBMITTAL

Date

05-25-2011

Project No.

VA256-C-1047

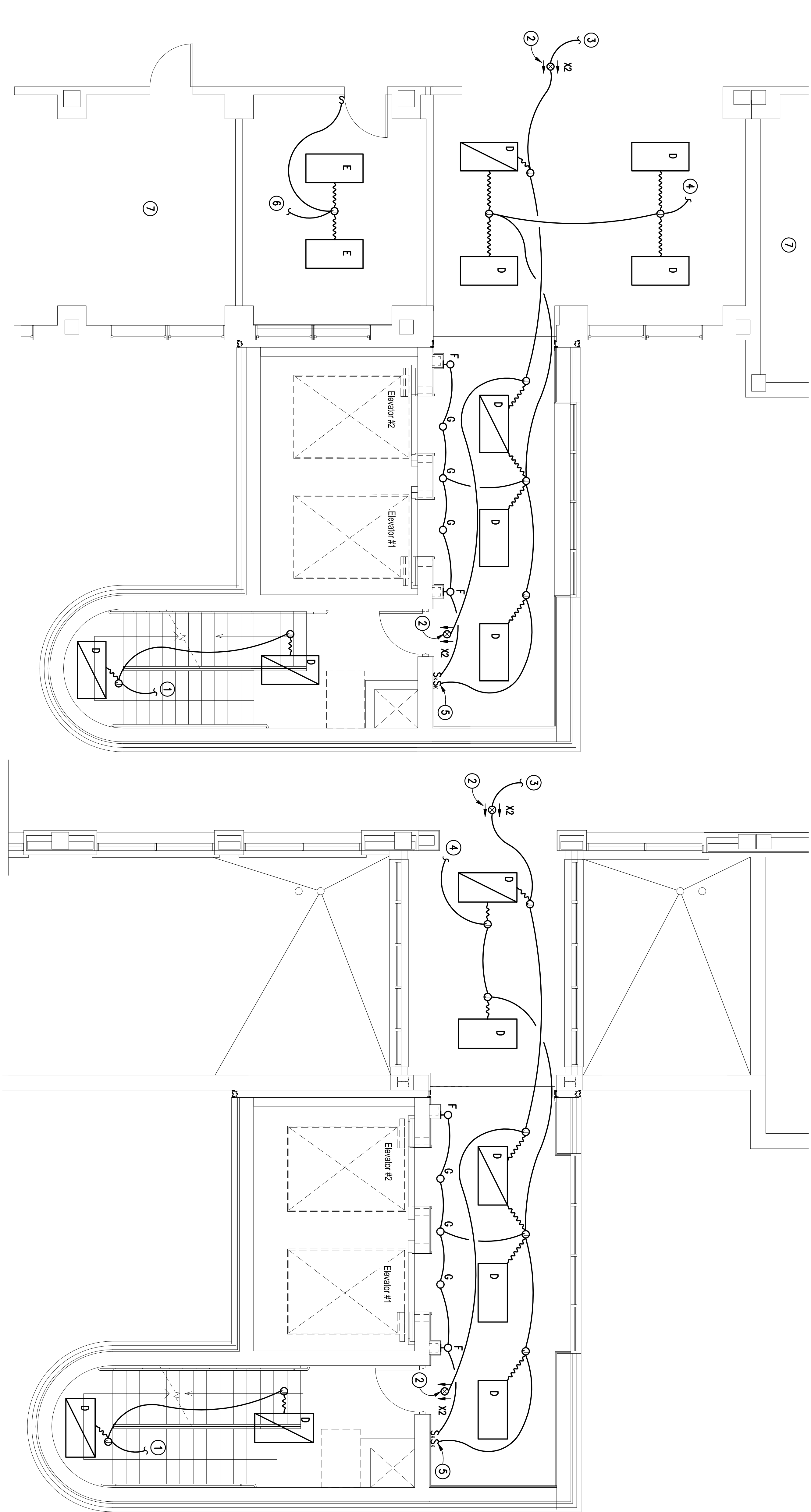
Dwg. No.

E404

Veterans
Administration

ENLARGED FLOOR PLAN
8TH FLOOR STAIRS – ELECTRICAL LIGHTING
SCALE: 1/4" = 1'-0"

ENLARGED FLOOR PLAN
9TH FLOOR STAIRS – ELECTRICAL LIGHTING
SCALE: 1/4" = 1'-0"



- NOTES:**
(THIS SHEET ONLY)
- MAKE CONNECTIONS TO EXISTING LIGHTING CIRCUIT AT STAIRWELL AREA ON FLOORS BELOW.
 - THIS FIXTURE SHALL BE UNSWITCHED.
 - MAKE ALL CONNECTIONS TO EXISTING LIFE SAFETY LIGHTING CIRCUIT IN CORRIDOR.
 - MAKE ALL CONNECTIONS TO EXISTING NORMAL POWER LIGHTING CIRCUIT IN CORRIDOR.
 - COORDINATE EXACT LOCATION OF SWITCHES WITH VA FOR ELEVATOR LOBBY PRIOR TO INSTALLATION.
 - MAKE ALL CONNECTIONS TO EXISTING NORMAL POWER LIGHTING CIRCUIT LEFT ABANDONED IN THIS SPACE.
 - NO NEW WORK IS REQUIRED IN THIS SPACE.