

A

B

C

D

E

F

G

H

three inches = one foot
one and one half inches = one foot
one inch = one foot
three quarters inch = one foot
one half inch = one foot
one quarter inch = one foot
one eighth inch = one foot
one sixteenth inch = one foot

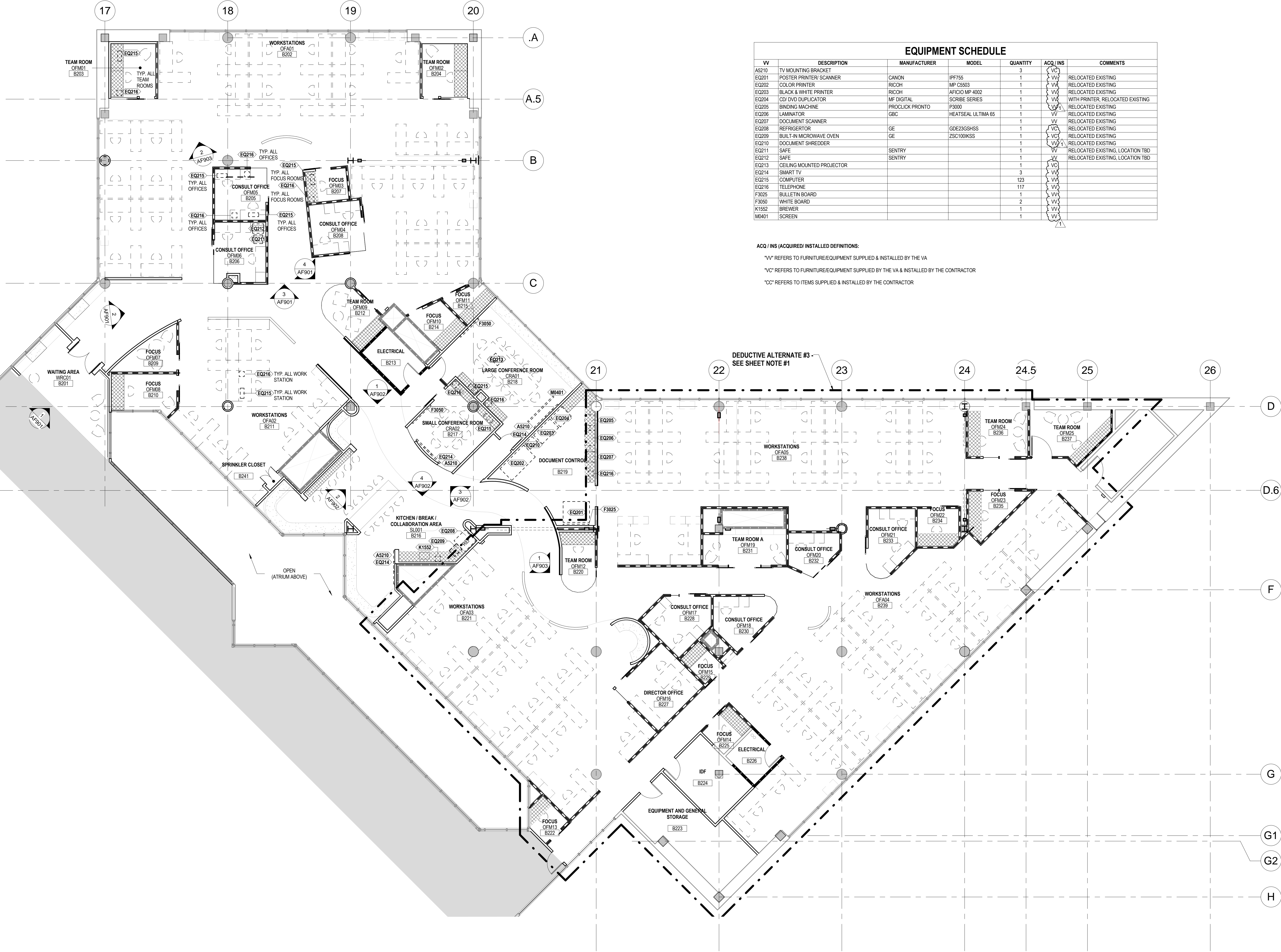
three quarters inch = one foot
one half inch = one foot
one quarter inch = one foot
one eighth inch = one foot
one sixteenth inch = one foot

three quarters inch = one foot
one half inch = one foot
one quarter inch = one foot
one eighth inch = one foot
one sixteenth inch = one foot

three quarters inch = one foot
one half inch = one foot
one quarter inch = one foot
one eighth inch = one foot
one sixteenth inch = one foot

three quarters inch = one foot
one half inch = one foot
one quarter inch = one foot
one eighth inch = one foot
one sixteenth inch = one foot

three quarters inch = one foot
one half inch = one foot
one quarter inch = one foot
one eighth inch = one foot
one sixteenth inch = one foot



EQUIPMENT SCHEDULE					
VV	DESCRIPTION	MANUFACTURER	MODEL	QUANTITY	ACQ / INS
AS210	TV MOUNTING BRACKET	CANON	IPF755	3	VC
EQ201	POSTER PRINTER/SCANNER	RICOH	MP C5533	1	VV
EQ202	COLOR PRINTER	RICOH	AFICIO MP 4002	1	VV
EQ203	BLACK & WHITE PRINTER	RICOH	AFICIO MP 4002	1	VV
EQ204	CD/DVD DUPLICATOR	MF DIGITAL	SCRIBE SERIES	1	VV
EQ205	BINDING MACHINE	PROCLICK PRONTO	P3000	1	VV
EQ206	LAMINATOR	GBC	HEATSEAL ULTIMA 65	1	VV
EQ207	DOCUMENT SCANNER	GE	GDE230SHSS	1	VC
EQ208	REFRIGERATOR	GE	ZSC100KSS	1	VC
EQ209	BUILT-IN MICROWAVE OVEN	GE	ZSC100KSS	1	VC
EQ210	DOCUMENT SHREDDER	SENTRY		1	VV
EQ211	SAFE	SENTRY		1	VV
EQ212	SAFE	SENTRY		1	VV
EQ213	CEILING MOUNTED PROJECTOR			1	VC
EQ214	SMART TV			3	VV
EQ215	COMPUTER			123	VV
EQ216	TELEPHONE			117	VV
F3025	BULLETIN BOARD			1	VV
F3050	WHITE BOARD			2	VV
K1552	BREWER			1	VV
M0401	SCREEN			1	VV

ACQ / INS (ACQUIRED) INSTALLED DEFINITIONS:
"VV" REFERS TO FURNITURE/EQUIPMENT SUPPLIED & INSTALLED BY THE VA
"VC" REFERS TO FURNITURE/EQUIPMENT SUPPLIED BY THE VA & INSTALLED BY THE CONTRACTOR
"CC" REFERS TO ITEMS SUPPLIED & INSTALLED BY THE CONTRACTOR

SHEET NOTES

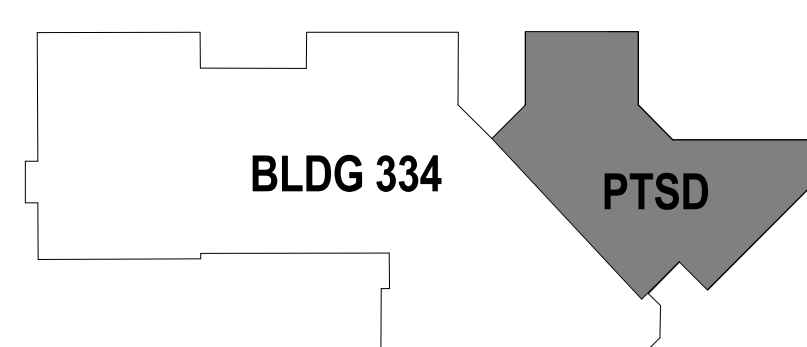
- UNFINISHED - OCCUPABLE SPACE IS DEDUCTIVE ALTERNATE #3. FOR MORE INFORMATION SEE DEDUCTIVE ALTERNATE NOTE ON SHEET G002.
- DEMOUNTABLE PARTITIONS AND GYPSUM BOARD WALLS WITHIN THE DEDUCTIVE ALTERNATE #3 BOUNDARY, NOT TO BE CONSTRUCTED IF DEDUCTIVE ALTERNATE #3 IS TAKEN.
- ALL CASEWORK IS INCLUDED WITHIN DEMOUNTABLE WALL SYSTEM AND IS SPECIFIED AND PURCHASED BY OWNER (VC ITEM). SOLID SURFACE COUNTER TOPS PURCHASED AND INSTALLED BY GENERAL CONTRACTOR.
- FURNITURE N.I.C. - SHOWN FOR REFERENCE ONLY.

KEY NOTES

LEGEND

- DEMOUNTABLE PARTITION
- BUILT IN BANQUETTE
- BUILT IN COUNTER - SEE NOTE #2.
- WORKSTATION (N.I.C.) - SEE SHEET NOTE #3.
- EQUIPMENT TAG

KEY PLAN



100% CD / BID SUBMISSION
FEBRUARY 2, 2016

1 FURNITURE & EQUIPMENT PLAN - PTSD (BLDG 334 - LEVEL 02)

1/8" = 1'-0"

60% CD SUBMISSION	03/16/10
100% CD / BID SUBMISSION	02/02/16
ADDENDUM #2	06/03/2016
Revisions:	Date

CONSULTANTS:

ARCHITECT

POLYTECH ASSOCIATES INC.
235 Pine Street, 17th Floor
San Francisco, CA 94104
TEL (415) 397-3117
FAX (415) 397-1517

Drawing Title
FURNITURE & EQUIPMENT PLAN - PTSD (BLDG 334 - LEVEL 02)

Approved: Project Director

Project Title
POST TRAUMATIC STRESS DIAGNOSIS (PTSD)
EXPANSION & RENOVATION

Location
795 WILLOW ROAD, MENLO PARK, CA

Date
11/3/14

Checked
NT

Drawn
PS

Project Number
640-235003
Building Number
BLDG 334
Drawing Number

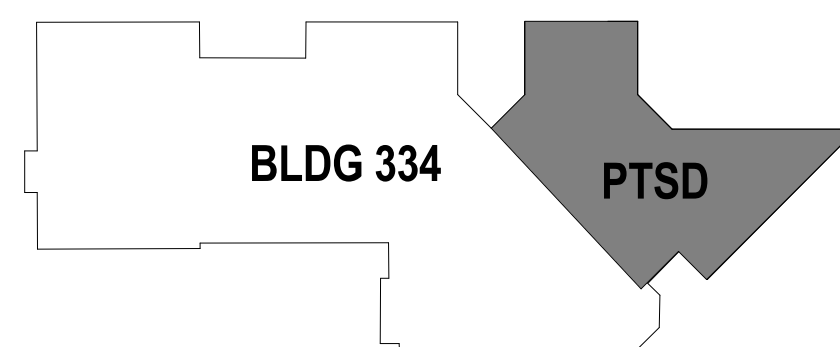
334 AI201

Office of
Construction and Facilities
Management

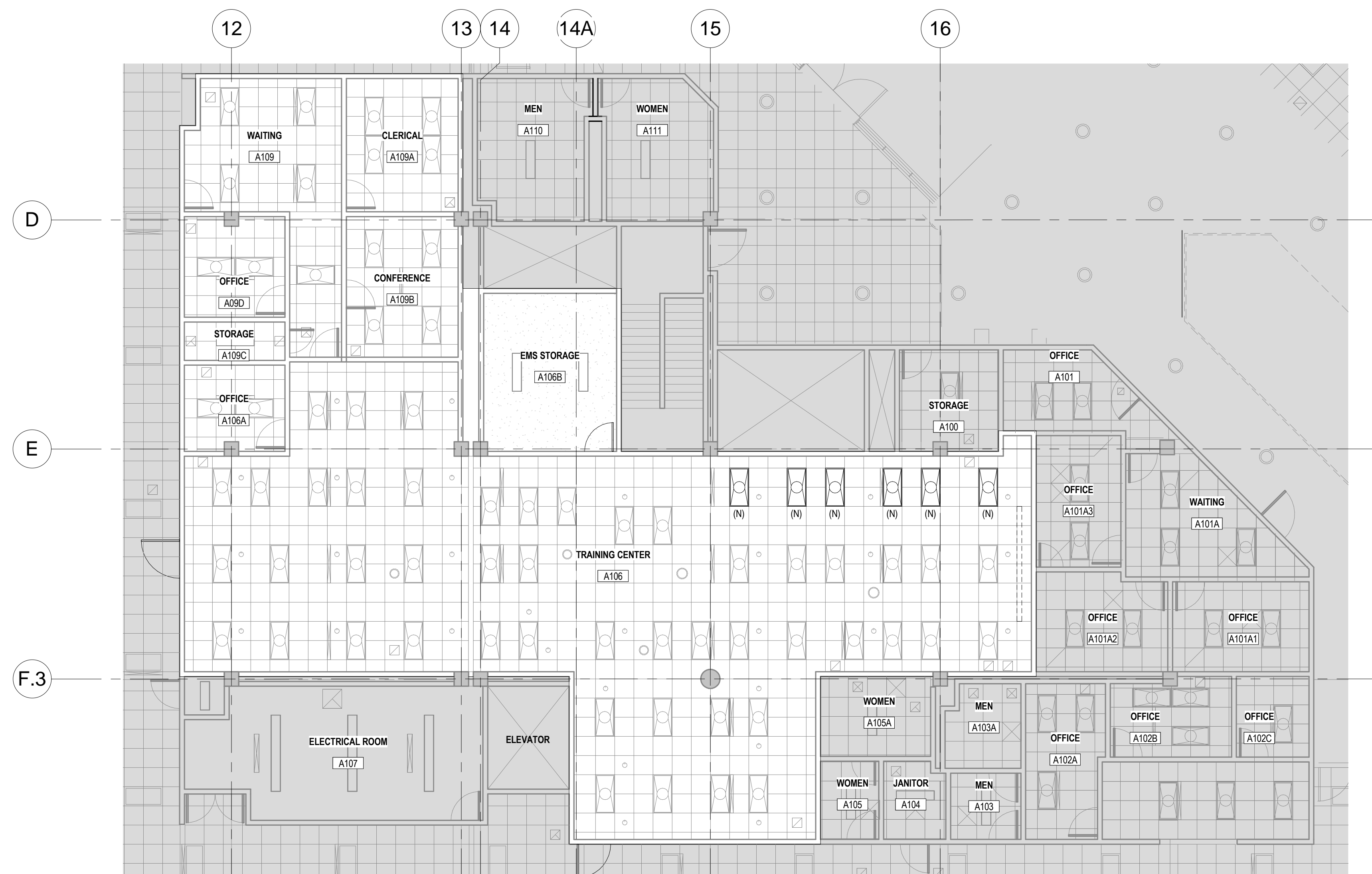


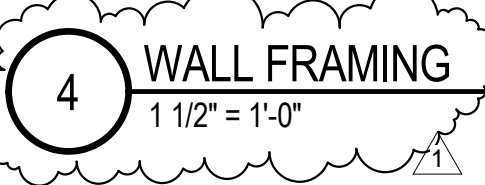


- 1 ALL COLUMNS AND BRACES TO BE P8 U.O.N.
2 WALLS TO STRUCTURE TO BE P3 U.O.N.
3 ISLAND TABLE SEE 5/334 AS512



100% CD / BID SUBMISSION
FEBRUARY 2, 2016





CONSULTANTS:

ARCHITECT

POLYTECH ASSOCIATES INC.
235 Pine Street, 17th Floor
San Francisco, CA 94104
TEL (415) 397-3117
FAX (415) 397-1517

Drawing Title
INTERIOR DETAILS - PTSD (BLDG 334 - LEVEL 02)

Approved: Project Director

Project Title
POST TRAUMATIC STRESS DIAGNOSIS (PTSD)
EXPANSION & RENOVATION

Location	
----------	--

Checked
LM

Draw
NT

Project Number
640-Z35003

Building Number
BLDG 334

Drawing Number

334 AS516

100% CD / BID SUBMISSION
FEBRUARY 2, 2016

Office of
Construction
and Facilities
Management

