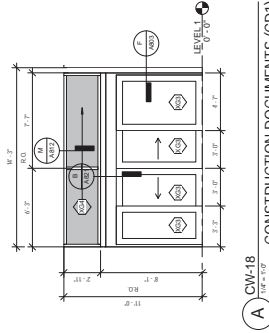
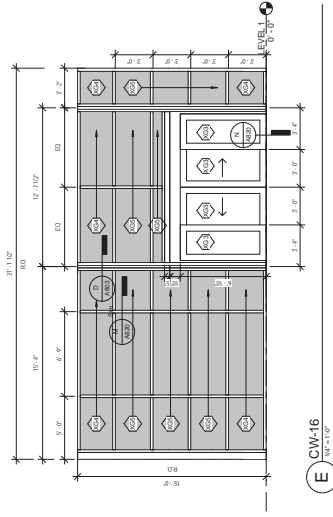
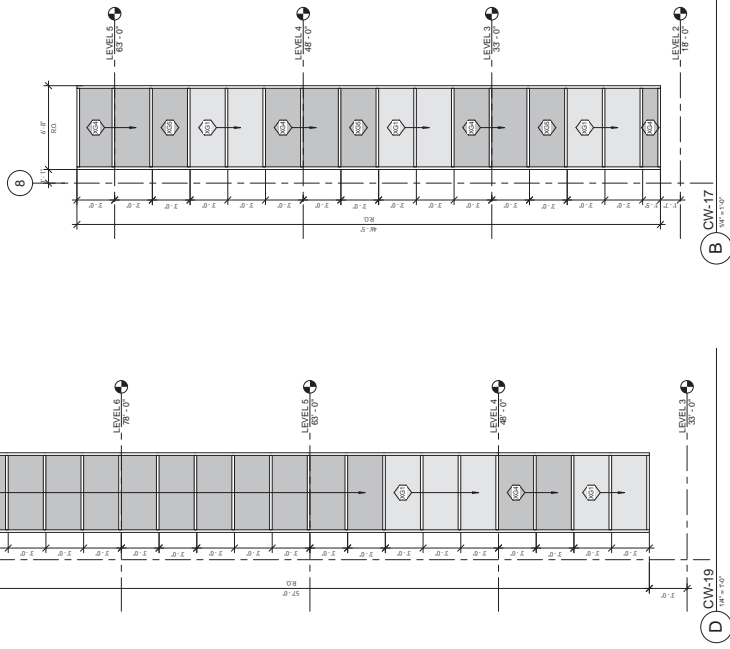


one eighth inch = one foot  
one quarter inch = one foot  
three eighths inch = one foot  
one half inch = one foot  
three quarters inch = one foot  
one inch = one foot  
one and one half inches = one foot  
three inches = one foot



CONSULTANTS		ARCHITECT/ENGINEERS:		CONSTRUCTION DOCUMENTS (CD)	
 HELLAWITH, GRAY & KASEBAMU, INC. 11111 111th Ave, Suite 11111 Miami, FL 33156 Phone: (305) 111-1111 Fax: (305) 111-1111 Email: info@hgw.com Contract No. 517624200		Project Title Lee County Outpatient Clinic		Office of Construction and Facilities Management	
		Drawing Number A531		Date 08/15/09	
Author J. Lee		Checker J. Lee		Date 08/15/09	
Reviewer J. Lee		Approver J. Lee		Date 08/15/09	