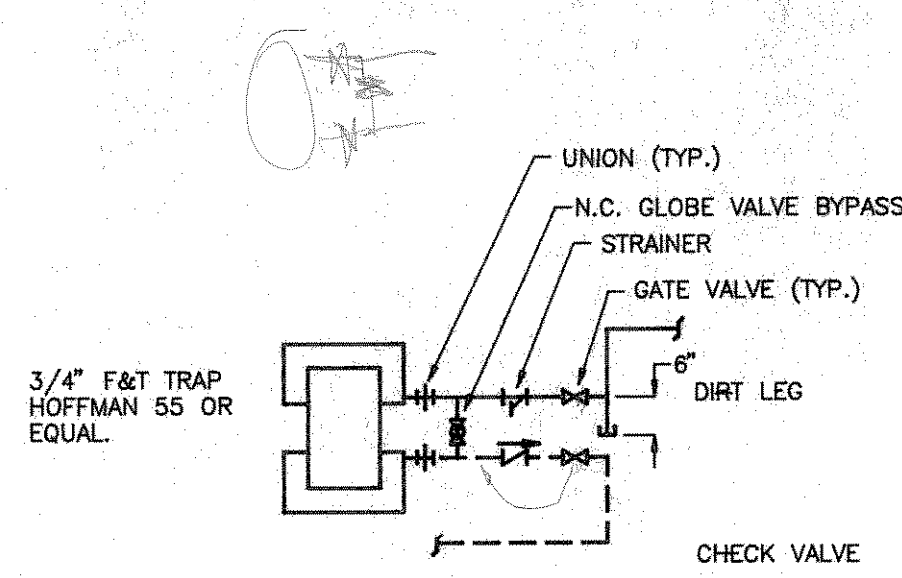
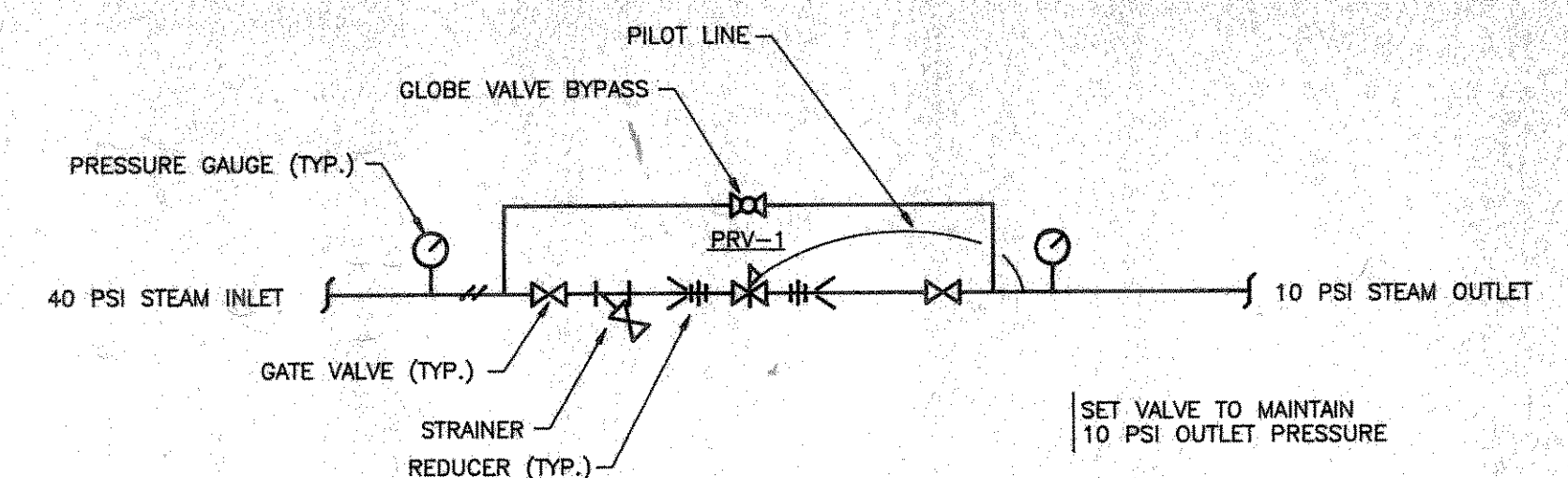


NOTES:
1. CORE DRILL HOLES IN FOUNDATION WALL FOR NEW PIPING PENETRATIONS. PROVIDE FULLY GROUTED SLEEVES AS SPECIFIED. FULL SPACE BETWEEN SLEEVE AND PIPE INSULATION WITH A WEATHERPROOF, INTUMESCENT SEALANT TO MAKE WEATHER TIGHT.

NEW PRESSURE REDUCING VALVE STATION. SEE DETAIL, THIS DWG.
CONNECT NEW STEAM AND CONDENSATE PIPING TO EXISTING IN THIS LOCATION. PROVIDE PRESSURE RELIEF VALVE AS NECESSARY. SEE DETAIL, THIS DWG.
INSTALL NEW DUPLEX CONDENSATE PUMP IN EXISTING PIT. RECONNECT TO EXISTING CONDENSATE PIPE. SEE DETAIL, DWG. H-4.

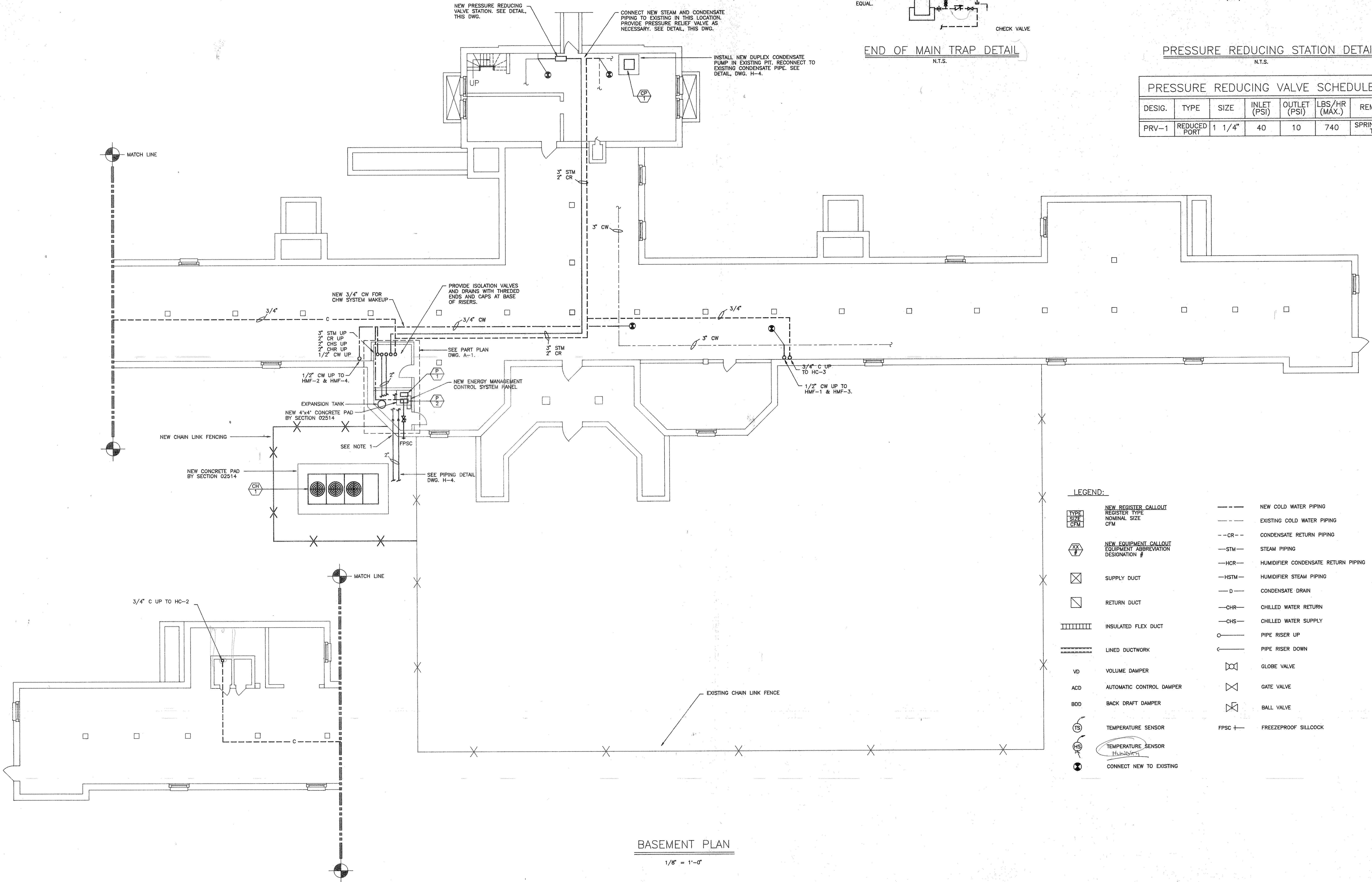


END OF MAIN TRAP DETAIL
N.T.S.



PRESSURE REDUCING STATION DETAIL
N.T.S.

PRESSURE REDUCING VALVE SCHEDULE						
DESIG.	TYPE	SIZE	INLET (PSI)	OUTLET (PSI)	LBS/HR (MAX.)	REMARKS
PRV-1	REDUCED PORT	1 1/4"	40	10	740	SPRING PILOT TYPE



BASEMENT PLAN
1/8" = 1'-0"

LEGEND:

- NEW REGISTER CALLOUT REGISTER TYPE NOMINAL SIZE CFM
- NEW EQUIPMENT CALLOUT EQUIPMENT ABBREVIATION DESIGNATION #
- SUPPLY DUCT
- RETURN DUCT
- INSULATED FLEX DUCT
- LINED DUCTWORK
- VD VOLUME DAMPER
- ACD AUTOMATIC CONTROL DAMPER
- BDD BACK DRAFT DAMPER
- TEMPERATURE SENSOR
- TEMPERATURE SENSOR (HUMIDITY)
- CONNECT NEW TO EXISTING

- NEW COLD WATER PIPING
- EXISTING COLD WATER PIPING
- CONDENSATE RETURN PIPING
- STEAM PIPING
- HUMIDIFIER CONDENSATE RETURN PIPING
- HUMIDIFIER STEAM PIPING
- CONDENSATE DRAIN
- CHILLED WATER RETURN
- CHILLED WATER SUPPLY
- PIPE RISER UP
- PIPE RISER DOWN
- GLOBE VALVE
- GATE VALVE
- BALL VALVE
- FREEZEPROOF SILCOCK

ABBREVIATION:

- SD SUPPLY DIFFUSER
- RR RETURN REGISTER
- EF EXHAUST FAN
- CHR CHILLER
- HMF ELECTRIC STEAM HUMIDIFIER
- FC FAN COIL
- HC HEATING COIL
- TYP. TYPICAL
- S.A. SUPPLY AIR
- R.A. RETURN AIR
- E.A. EXHAUST AIR
- N.T.S. NOT TO SCALE
- CW COLD WATER

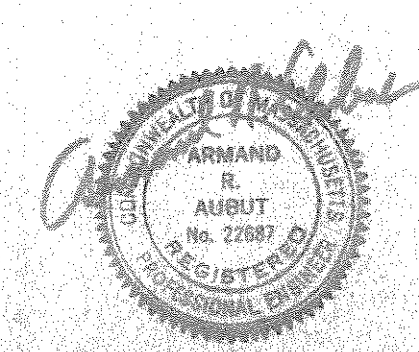


Department of Veterans Affairs
Medical Center
Northampton, MA 01060

INDUSTRIAL HYGIENIST
DENNISON ENVIRONMENTAL
600 West Cummings Park, Suite 6500
Woburn, Massachusetts 01453
(617) 932-9400

ELECTRICAL ENGINEER
SHEPHERD ENGINEERING
1308 Grafton Street
Worcester, Massachusetts 01503
(508) 797-7783

DESIGNER/MECHANICAL ENGINEER
ARA ENGINEERING ASSOCIATES, INC.
171 Main Street, Suite 103
Ashland, Massachusetts 01721
(508) 881-7432



Drawing Title
BASEMENT FLOOR HVAC PLAN
Approved: Division Chief
Approved: Service Director

Project Title
AIR QUALITY IMPROVEMENTS
WARD 9
Building Number 9
Checked ARA
Drawn TGB
Location NORTHAMPTON, MASSACHUSETTS

Date 07-15-93
Project No. 631-91-105
Drawing No. 59-24
H-1
Dwg. 6 OF 12

Veterans Administration

B9-SP-08

600 West Cummings Park, Suite 6500
Woburn, MA 01453
(617) 932-9400