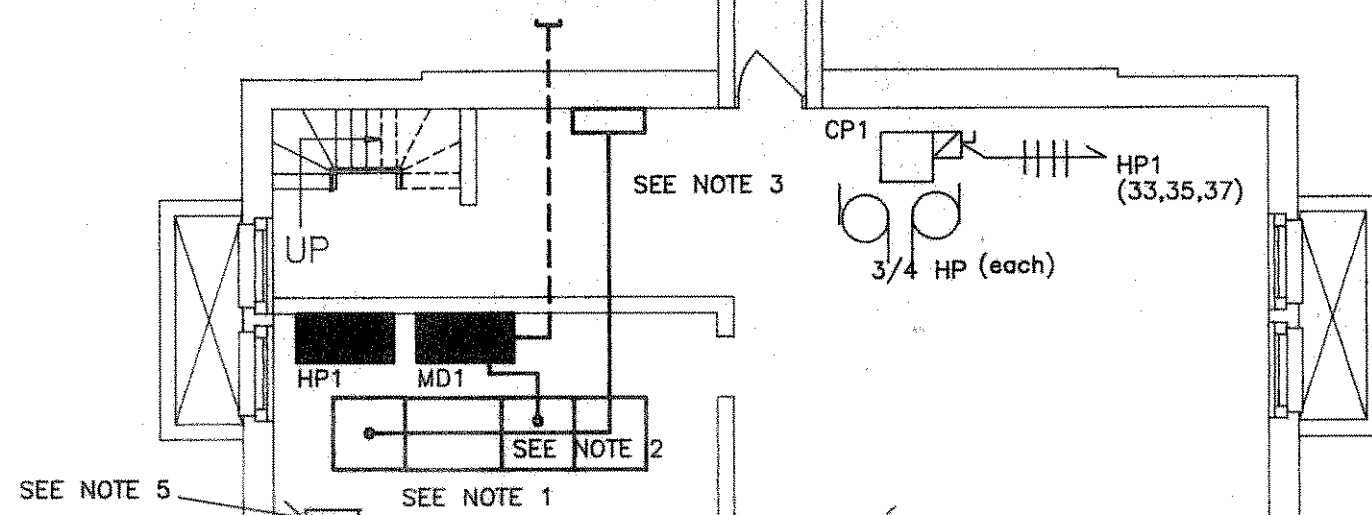


REFER TO SITE PLAN FOR CONTINUATION OF SECONDARY FEEDERS. THE GENERAL CONTRACTOR SHALL BE RESPONSIBLE TO EXCAVATE THE FOUNDATION, CONCRETE FLOOR, AND WALL FOR THE E.C. TO INSTALL THE SECONDARY FEEDERS TO PANEL MD1.



SEE NOTE 5

SEE NOTE 1

SEE NOTE 3

SEE NOTE 2

UP

MD1

CP1

HP1 (35,35,37)

3/4 HP (each)

30/20

HP1 (15,17,19)

30/20

HP1 (16,18,20)

200/175 MD1

WP

3/4 2/0

1/0-2" C

NOTE 1:
THE ELECTRICAL CONTRACTOR SHALL BE RESPONSIBLE TO DISCONNECT AND REMOVE FROM THE SITE THE PRIMARY SWITCH, TRANSFORMERS, COMPARTMENTS AND ALL RELATED PRIMARY CABLE. REMOVE THE END PLATE FROM THE PRIMARY SWITCH SECTION AND REATTACH IT TO THE EXISTING 400A DISTRIBUTION BOARD REMAINING. THE PRIMARY SWITCH SHALL NOT BE DISCONNECTED UNTIL THE NEW SERVICE IS READY FOR CUTOVER.

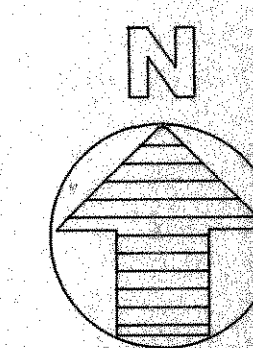
NOTE 2:
THE EXISTING 400 AMP DISTRIBUTION BOARD SHALL REMAIN DISCONNECT THE FEED AND REFEED FROM THE NEW 1000 AMPERE DISTRIBUTION BOARD.

NOTE 3:
DISCONNECT AND REMOVE THE EXISTING PRIMARY CABLE, CONDUIT, ENTRANCE BOX AND ALL RELATED MATERIAL. REMOVE THE PRIMARY CABLE BACK TO EXISTING HIGH VOLTAGE MANHOLE SHOWN ON DRAWING C-1. HOT CAP EXISTING LOOP DISTRIBUTION IN MANHOLE. COORDINATE ABATEMENT OF ASBESTOS WIRING INSULATION WITH SECTION 01569.

NOTE 4:
COORDINATE WITH SECTION 01569 AND SECTION 09500. REMOVE AND REINSTALL IN A SIMILAR LOCATION ALL LIGHT FIXTURES IN THE FIRST FLOOR CEILING THAT WILL BE ABATED.

NOTE 5:
EXISTING LOCATION OF THE FIRE ALARM CONTROL PANEL. THE ELECTRICAL CONTRACTOR SHALL FURNISH THE DUCT SMOKE DETECTOR (MATCH EXISTING PANEL MANUFACTURER). THE HVAC CONTRACTOR SHALL INSTALL THE DUCT SMOKE AND SENSING TUBE. THE ELECTRICAL CONTRACTOR SHALL INSTALL THE WIRING TO THE UNIT SHUTDOWN CONTROLS AND BACK TO THE FIRE ALARM CONTROL PANEL. FINAL CONNECTIONS AT THE UNIT SHALL BE BY THE HVAC CONTRACTOR. ALL DUCT SMOKE ARE TO BE LOOPED AS A ZONE WITH A LED REMOTE TEST SWITCH LOCATED ADJACENT TO THE FACP FOR EACH DUCT SMOKE. ALL REMOTE SWITCHES ARE TO BE LABELED AS TO THEIR SOURCE. INSTALL A SEPARATE ZONE IN THE CONTROL PANEL AND LABEL AT THE REMOTE ANNUNCIATOR.

BASEMENT PLAN
1/8" = 1'-0"



Department of Veterans Affairs
Medical Center
Northampton, MA 01060

INDUSTRIAL HYGIENIST

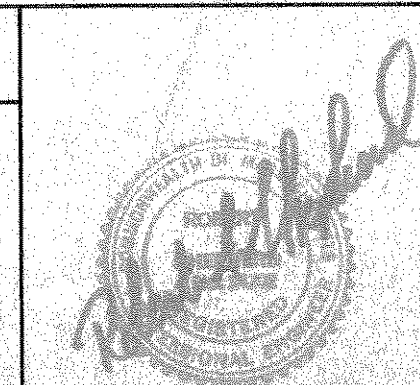
DENNISON ENVIRONMENTAL
800 West Cummings Park, Suite 6500
Woburn, Massachusetts 01453
(616) 932-9400

ELECTRICAL ENGINEER

SHEPHERD ENGINEERING
1308 Grafton Street
Worcester, Massachusetts 01503
(508) 757-7783

DESIGNER/MECHANICAL ENGINEER

ARA ENGINEERING ASSOCIATES, INC.
171 Main Street, Suite 103
Ashland, Massachusetts 01721
(508) 881-7432



Drawing Title

ELECTRICAL SITE PLAN

Approved: Division Chief

Approved: Service Director

Project Title

AIR QUALITY IMPROVEMENTS
WARD 9

Building Number

9

Location

NORTHAMPTON, MASSACHUSETTS

Date

07-15-93

Project No.

631-91-105

Drawing No.

59-24

Dwg. 10 of 12

Veterans
Administration