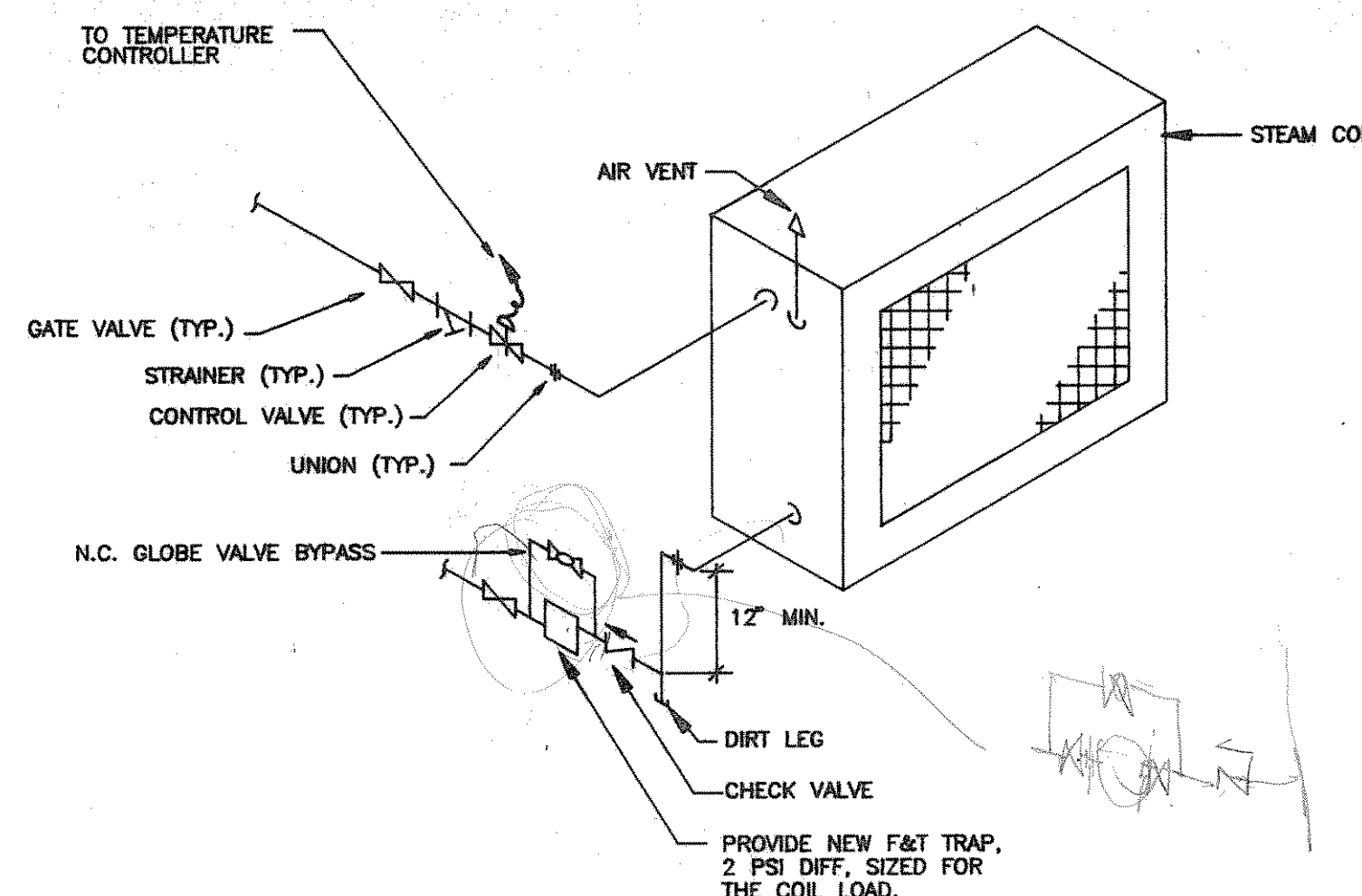
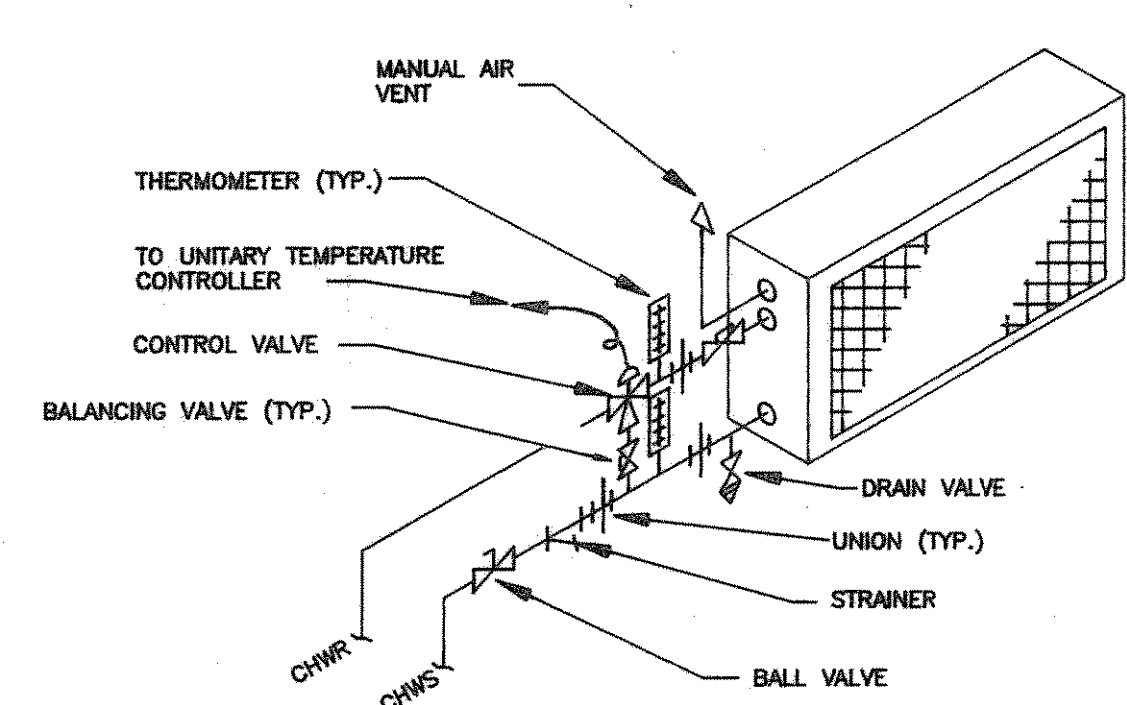


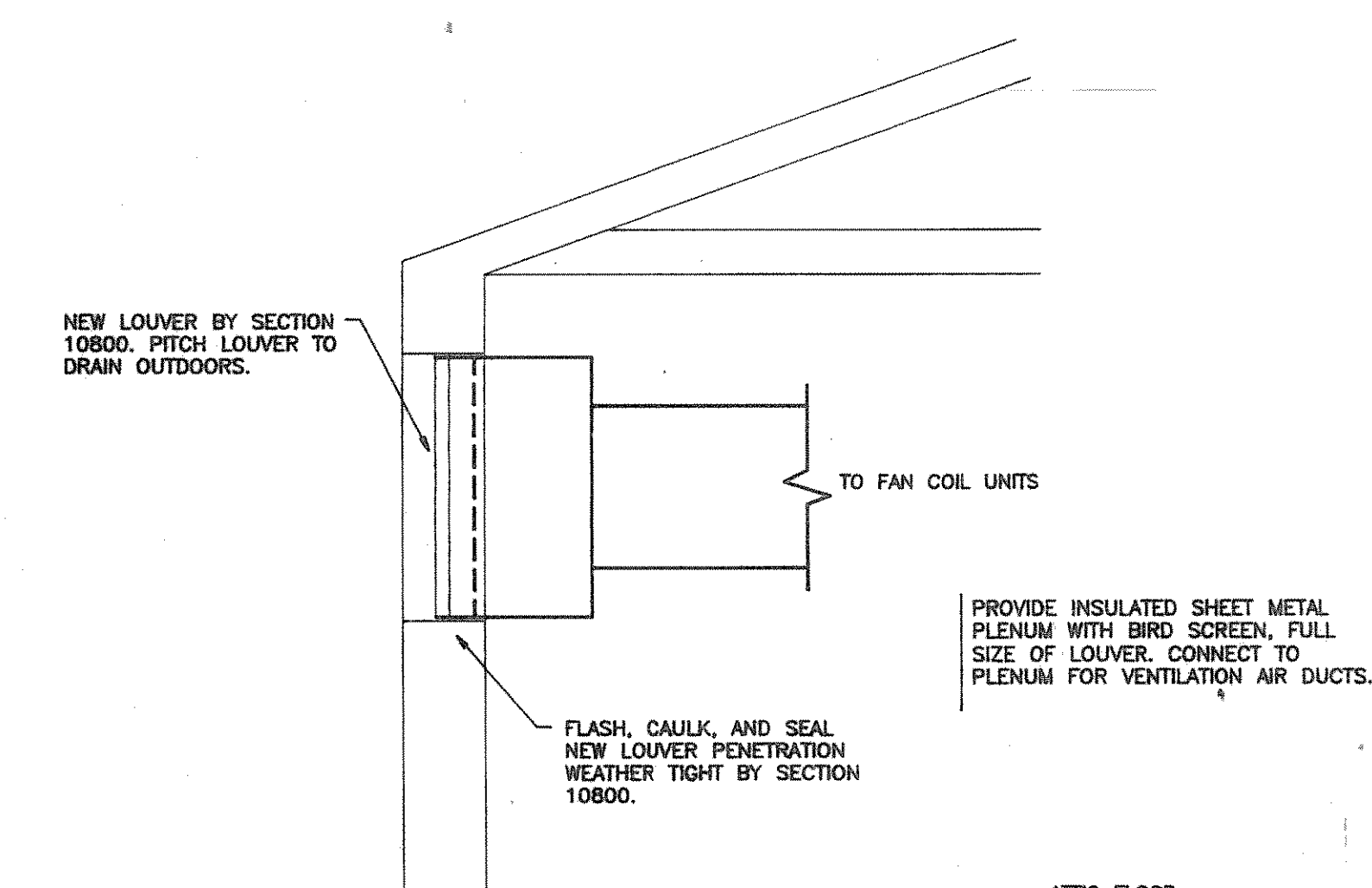
FLOW DIAGRAM  
N.T.S.



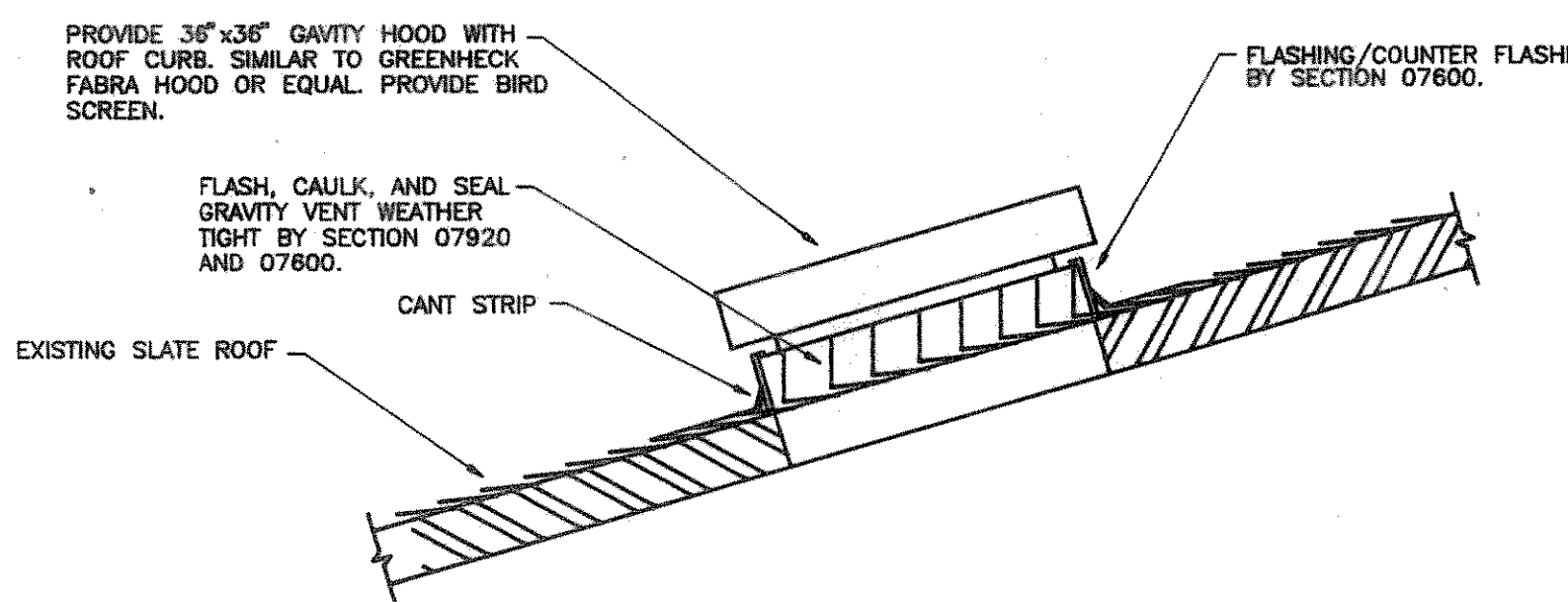
STEAM COIL PIPING DETAIL  
N.T.S.



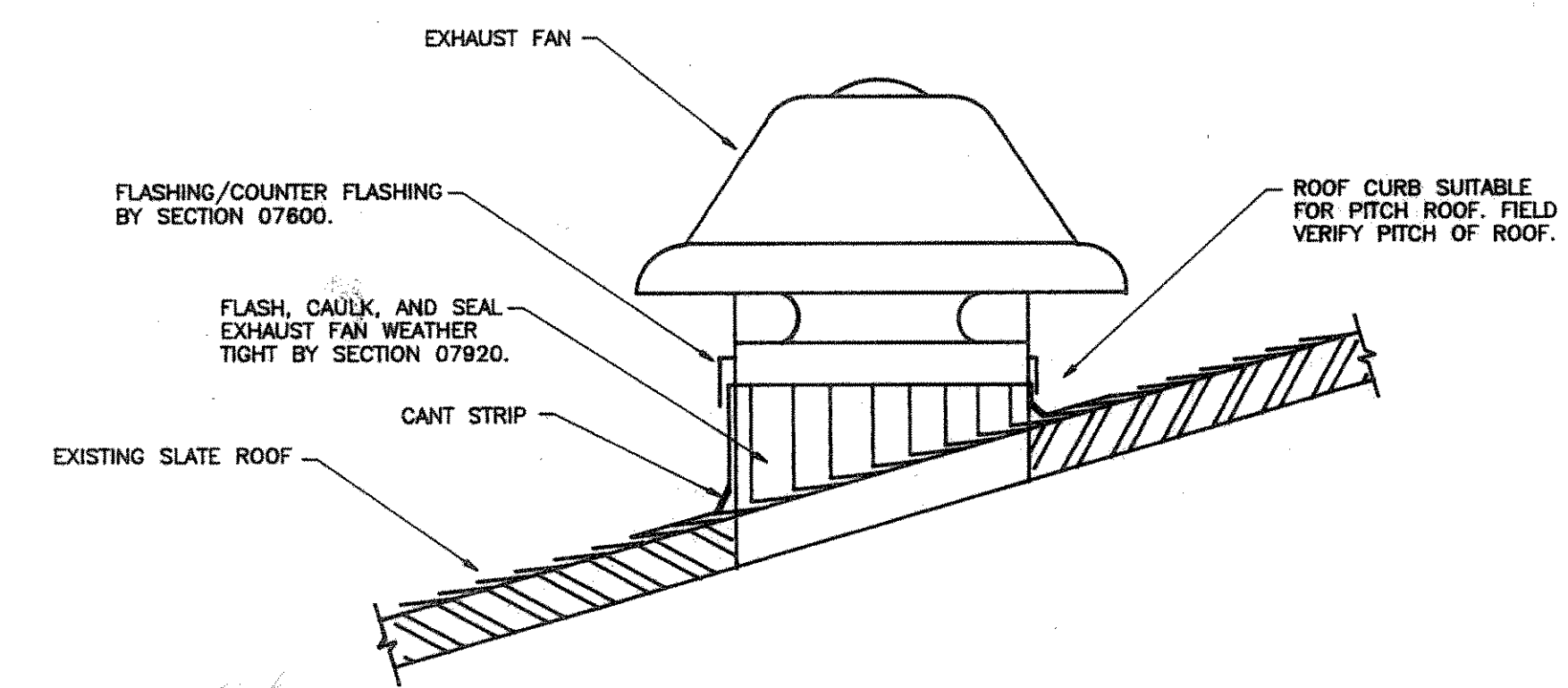
CHILLED WATER COIL PIPING DETAIL  
N.T.S.



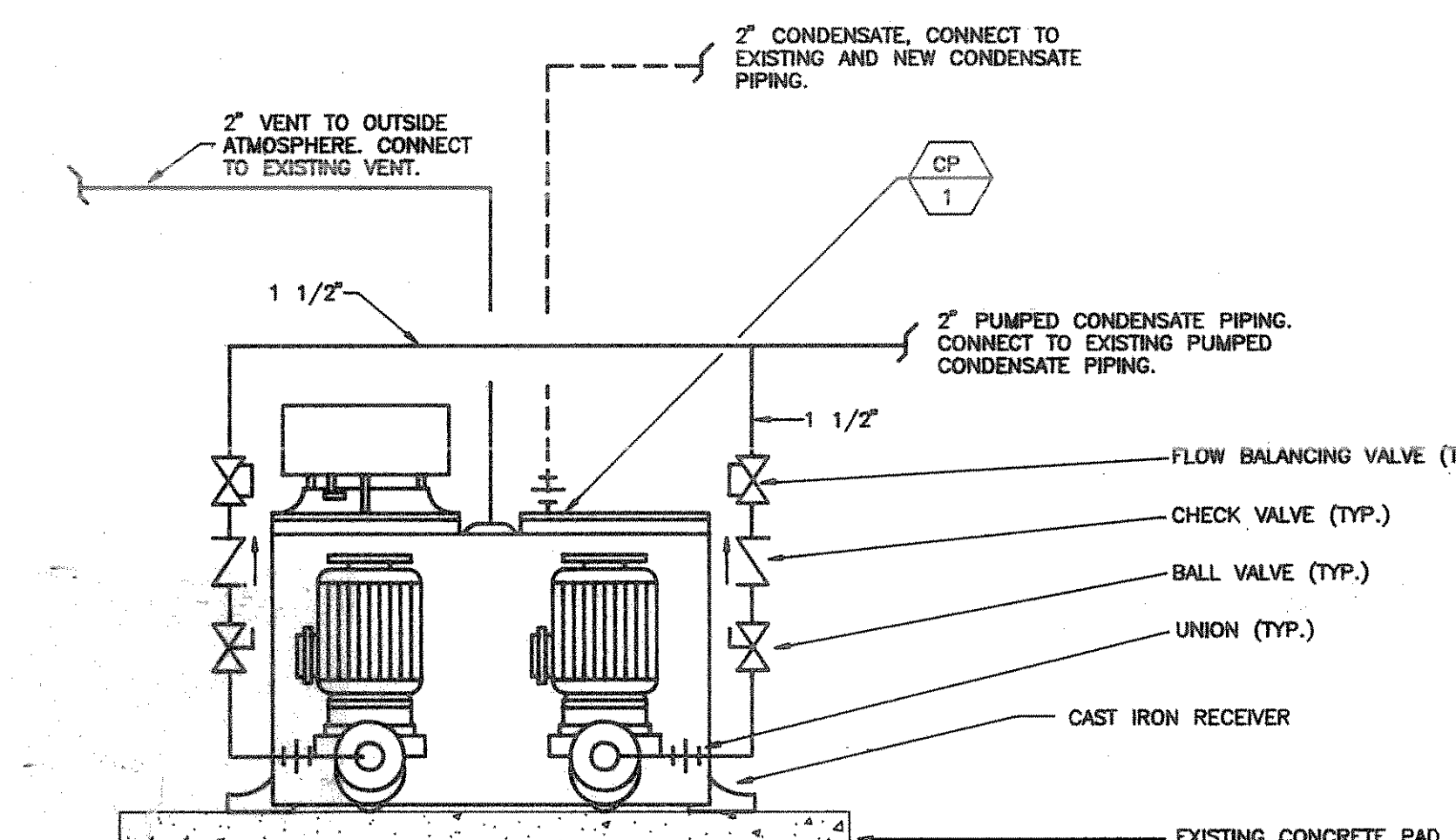
TYPICAL LOUVER DETAIL  
N.T.S.



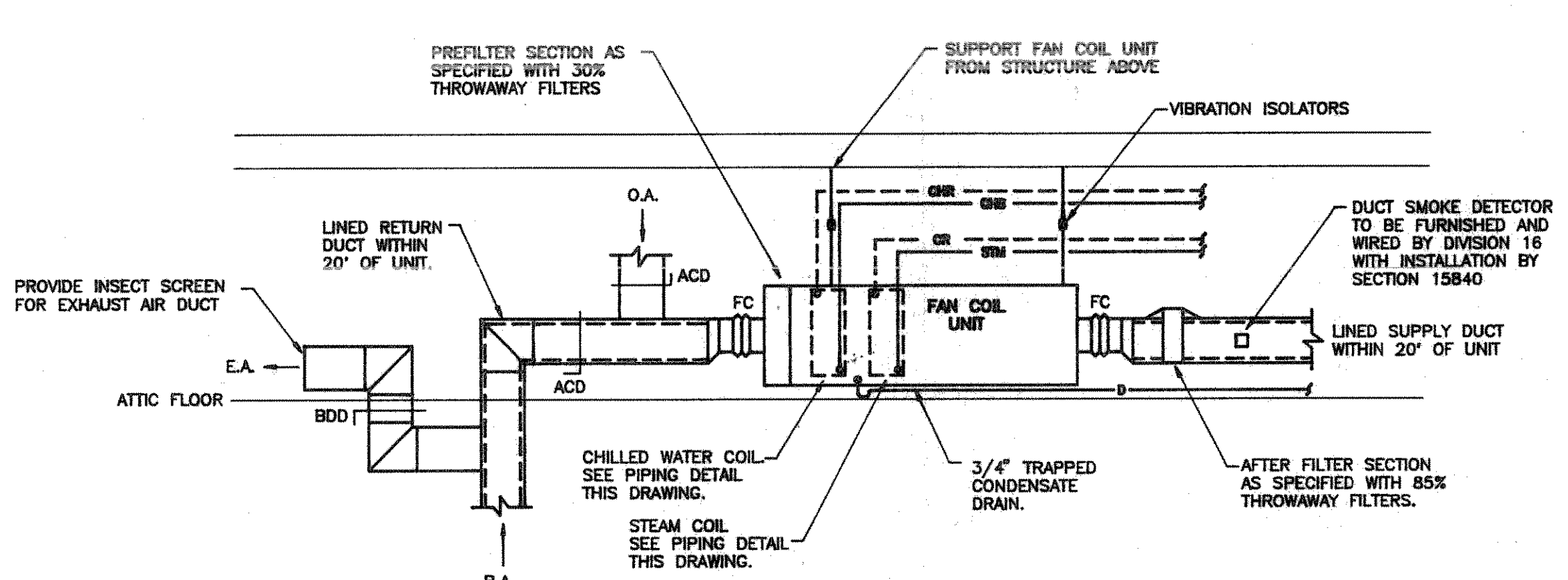
ROOF GRAVITY VENT DETAIL  
N.T.S.



ROOF EXHAUST FAN DETAIL  
N.T.S.



DUPLEX CONDENSATE PUMP DETAIL  
N.T.S.



FAN COIL UNIT INSTALLATION DETAIL  
N.T.S.

AIR COOLED CHILLER SCHEDULE										
DESIG.	MBH	TONS	E.W.T.	L.W.T.	GPM	P.D. (MAX)	KW	VOLTS	PHASE	REMARKS
CH-1	442.8	37	54	45	85	31	40.9	208	3	Ø

Ø CHILLER IS AIR COOLED, OUTDOOR PACKAGED TYPE WITH RECIPROCATING COMPRESSOR

EXHAUST FAN SCHEDULE							
DESIG.	TYPE	CFM	S.P.	H.P.	RPM	VOLTS	REMARKS
EF-1	INLINE	500	0.25	1/15	1300	115	1
EF-2	INLINE	320	0.25	1/25	1300	115	1
EF-3	INLINE	350	0.25	1/25	1300	115	1
EF-4	INLINE	200	0.25	1/30	1300	115	1
EF-5	INLINE	250	0.25	1/25	1300	115	1
EF-6	CURB MOUNTED DOWNBLAST	1600	0.25	1/4	1140	115	1

PUMP SCHEDULE						
DESIG.	TYPE	G.P.M.	HEAD (H <sub>2</sub> O)	H.P.	VOLTS	REMARKS
P-1	BASE MOUNTED END SUCTION	85	40	2	208	3
P-2	BASE MOUNTED END SUCTION	85	40	2	208	3

AIR HANDLING UNIT SCHEDULE																	
DESIG.	CFM	S.P.	ELECTRIC			STEAM COIL		CHILLED WATER COIL		CHILLED WATER COIL		REMARKS					
			H.P.	VOLT	PHASE	MBH	PSIG	PSIG	MBH	E.W.T.	Δ T	OPM	PSIG	PSIG			
FC-1	2050	2"	1.5	208	3	121.8	5	600	0.22	59	45	10	12	10	0.43	500	③ ④
FC-2	4500	2"	3	208	3	267.3	5	600	0.22	126	45	10	25	10	0.43	500	③ ④
FC-3	2800	2"	2	208	3	154.2	5	600	0.22	84	45	10	17	10	0.6	500	③ ④
FC-4	2800	2"	2	208	3	154.2	5	600	0.22	84	45	10	17	10	0.6	500	③ ④

- BASED ON 60°F E.A.T. AND 95°F L.A.T.
- BASED ON 80°F E.A.T. AND 55°F L.A.T.
- BALANCE OUTSIDE AIR AT 660 CFM.
- BALANCE OUTSIDE AIR AT 1360 CFM.
- BALANCE OUTSIDE AIR AT 675 CFM.
- BALANCE OUTSIDE AIR AT 650 CFM.
- PIPE UNITS AS SHOWN IN STEAM AND CHILLED WATER COIL PIPING DETAILS, THIS DRAWING.

HUMIDIFIER SCHEDULE							
DESIG.	DESIGN CONDITIONS		LBS./HR.	VOLT.	PHASE	MAX KW	REMARKS
	OUTSIDE	SUPPLY					
HMF-1	-5° F/30% RH	76° F/30% RH	18 ✓	208	3	7.6	Ø
HMF-2	-5° F/30% RH	76° F/30% RH	25	208	3	7.6	Ø
HMF-3	-5° F/30% RH	76° F/30% RH	34	208	3	11.4	Ø
HMF-4	-5° F/30% RH	76° F/30% RH	25	208	3	7.6	Ø

Ø PIPE AS SHOWN IN DETAIL, DRAWING H-2.

STEAM HEATING COIL SCHEDULE							
DESIG.	CFM	FACE VEL.	S.P."	CAPACITY (BTUH)	STEAM (PSI)	E.A.T.	L.A.T.
HC-1	300	600	0.1	6480	5	55	75
HC-2	300	600	0.1	6480	5	55	75
HC-3	200	600	0.1	4320	5	55	75

Ø PIPE AS SHOWN IN STEAM COIL PIPING DETAIL, THIS DRAWING

DUPLEX CONDENSATE RECEIVER/PUMP SCHEDULE									
DESIG.	CAPACITY (GAL.)	CAPACITY (SF EDR)	CAPACITY (GPM)	PRESSURE (PSI)	H.P.	RPM	VOLT	PHASE	REMARKS
CP-1	45	20,000	30	20	3/4	1750	208	3	

**Department of Veterans Affairs**  
Medical Center  
Northampton, MA 01060

**INDUSTRIAL HYGIENIST**

DENNISON ENVIRONMENTAL  
600 West Cummings Park, Suite 8500  
Woburn, Massachusetts 01453  
(618) 932-6400

**ELECTRICAL ENGINEER**

SHEPHERD ENGINEERING  
1308 Grafton Street  
Worcester, Massachusetts 01603  
(508) 757-7793

**DESIGNER/MECHANICAL ENGINEER**

ARA ENGINEERING ASSOCIATES, INC.  
171 Main Street, Suite 103  
Ashland, Massachusetts 01721  
(508) 881-7432

**Drawing Title**  
SCHEDULES & DETAILS

**Project Title**  
AIR QUALITY IMPROVEMENTS  
WARD 9

**Date**  
07-15-93

**Project No.**  
631-91-105

**DRAWING NO.**  
59-24  
H-4

**Dwg. 9 of 12**

**Approved: Division Chief**

**Approved: Service Director**

**Building Number**  
9

**Checked**  
ARA

**Drawn**  
TOB

**Location**  
NORTHAMPTON, MASSACHUSETTS

**Veterans Administration**