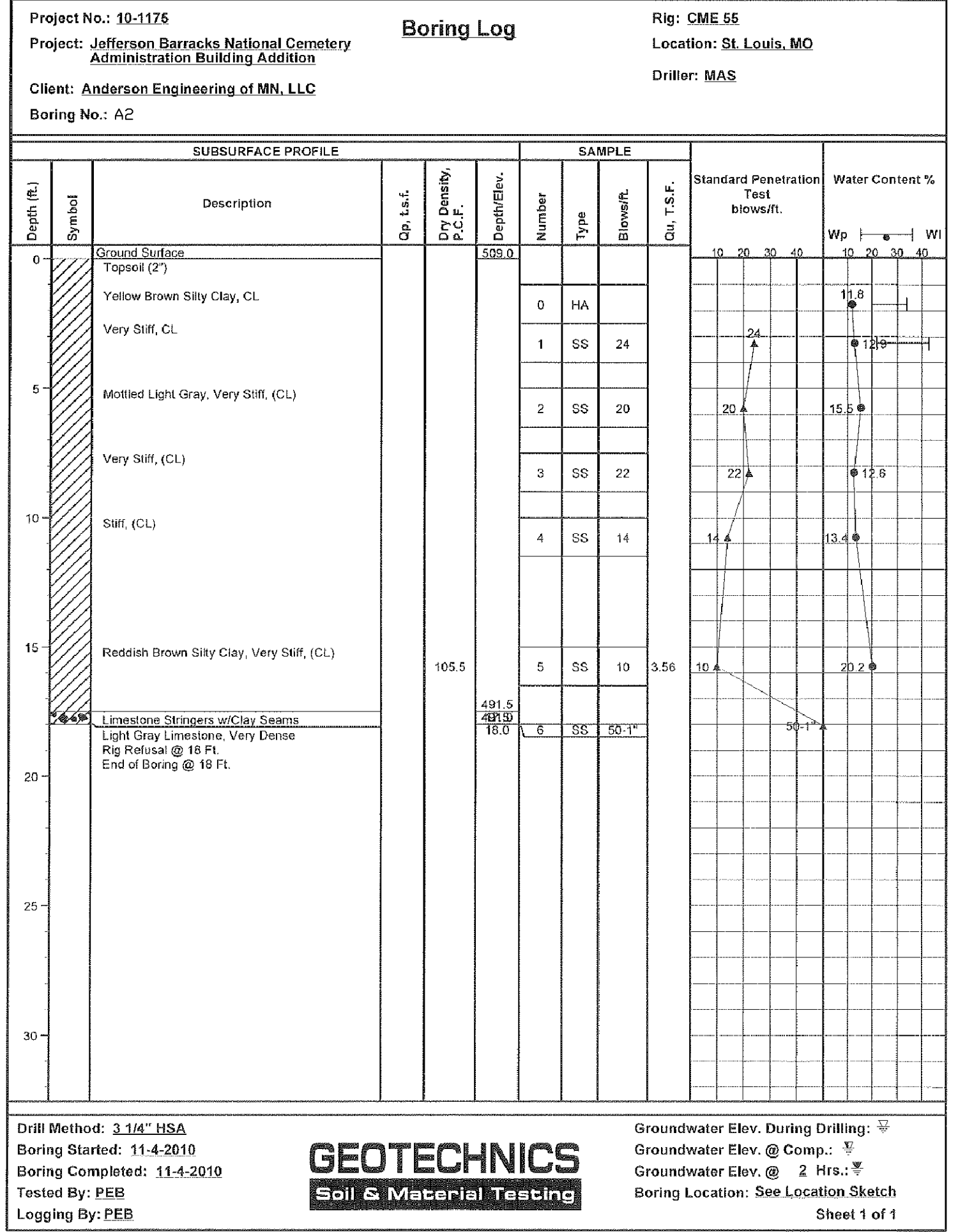
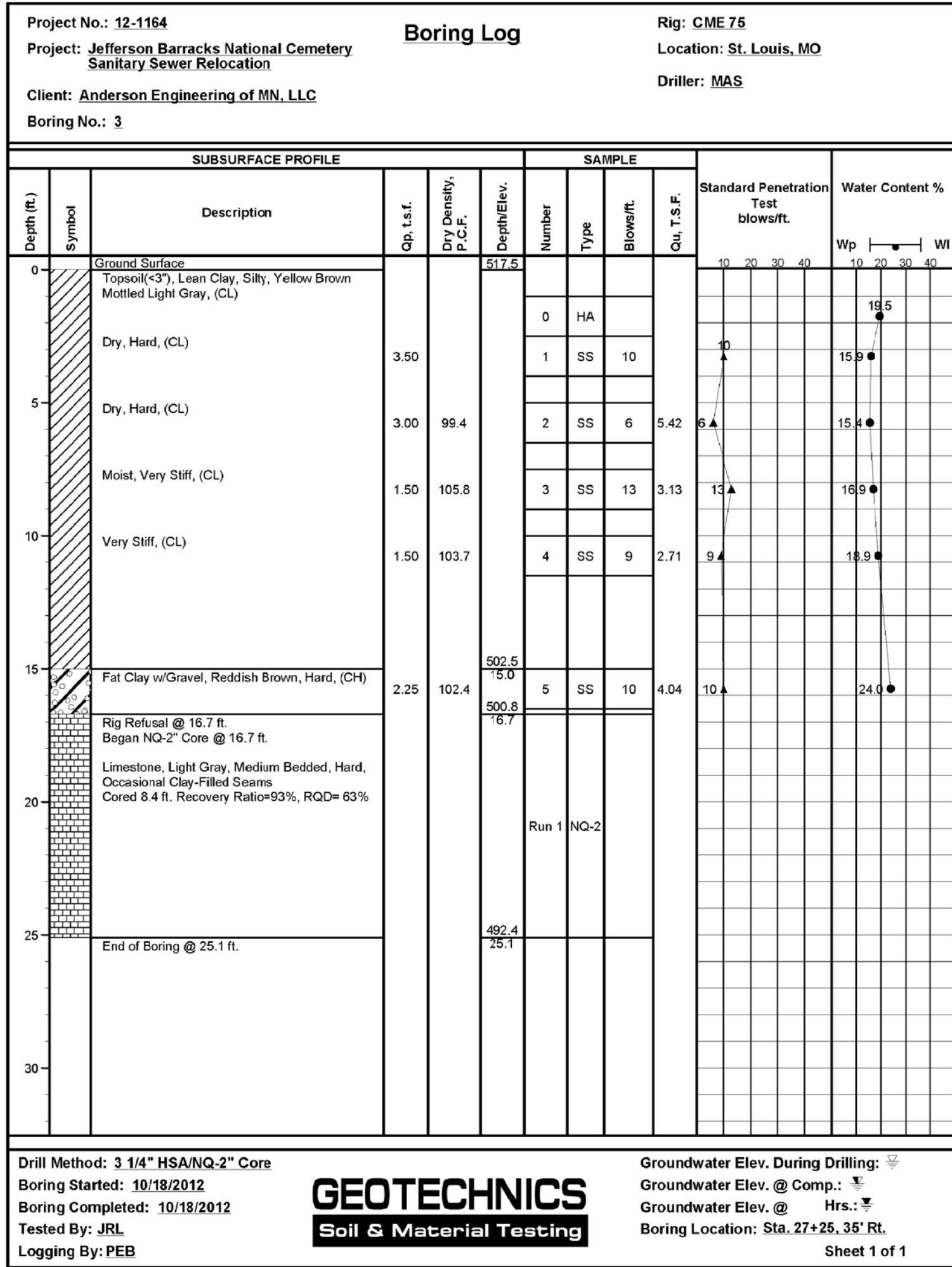
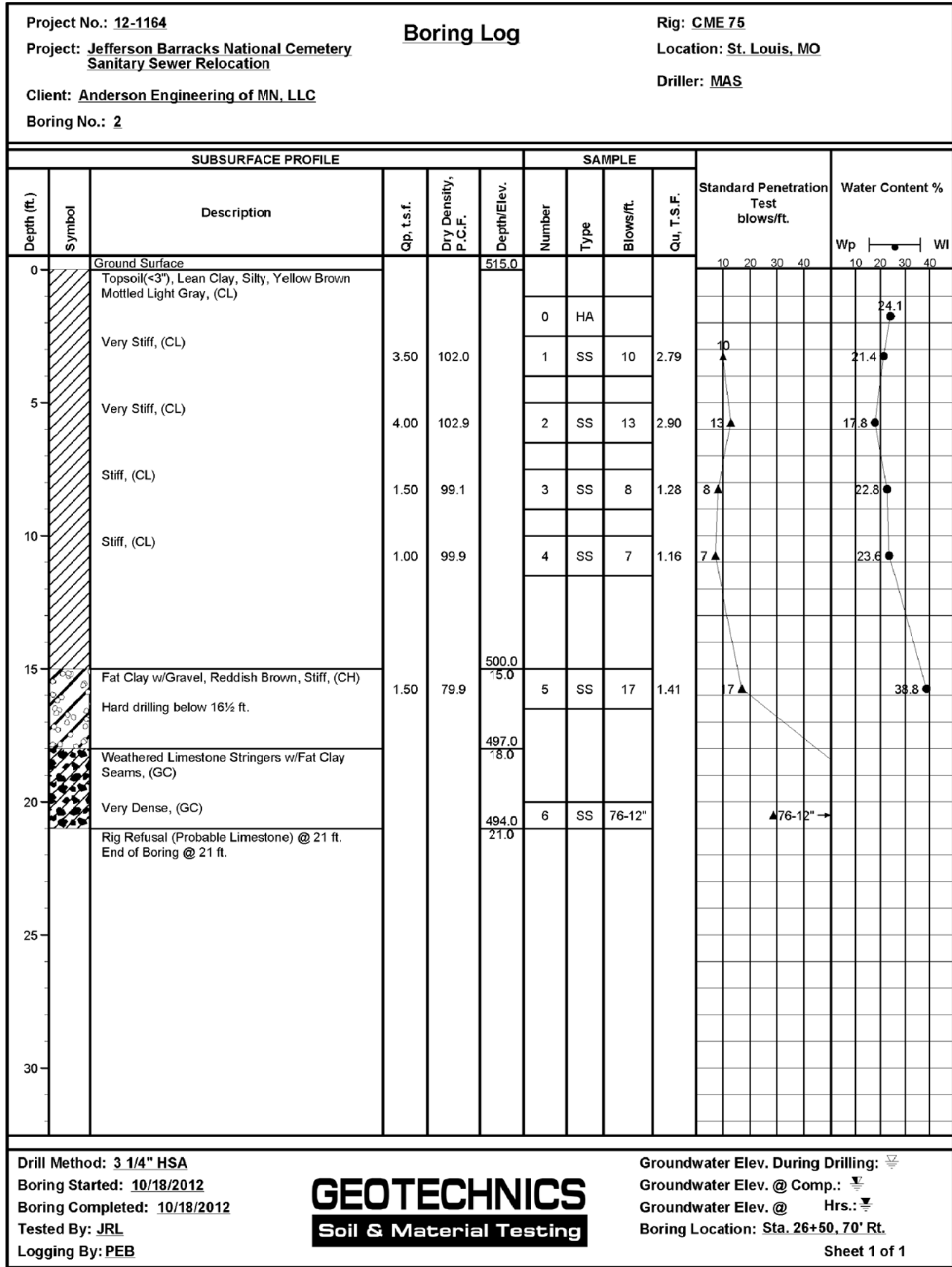
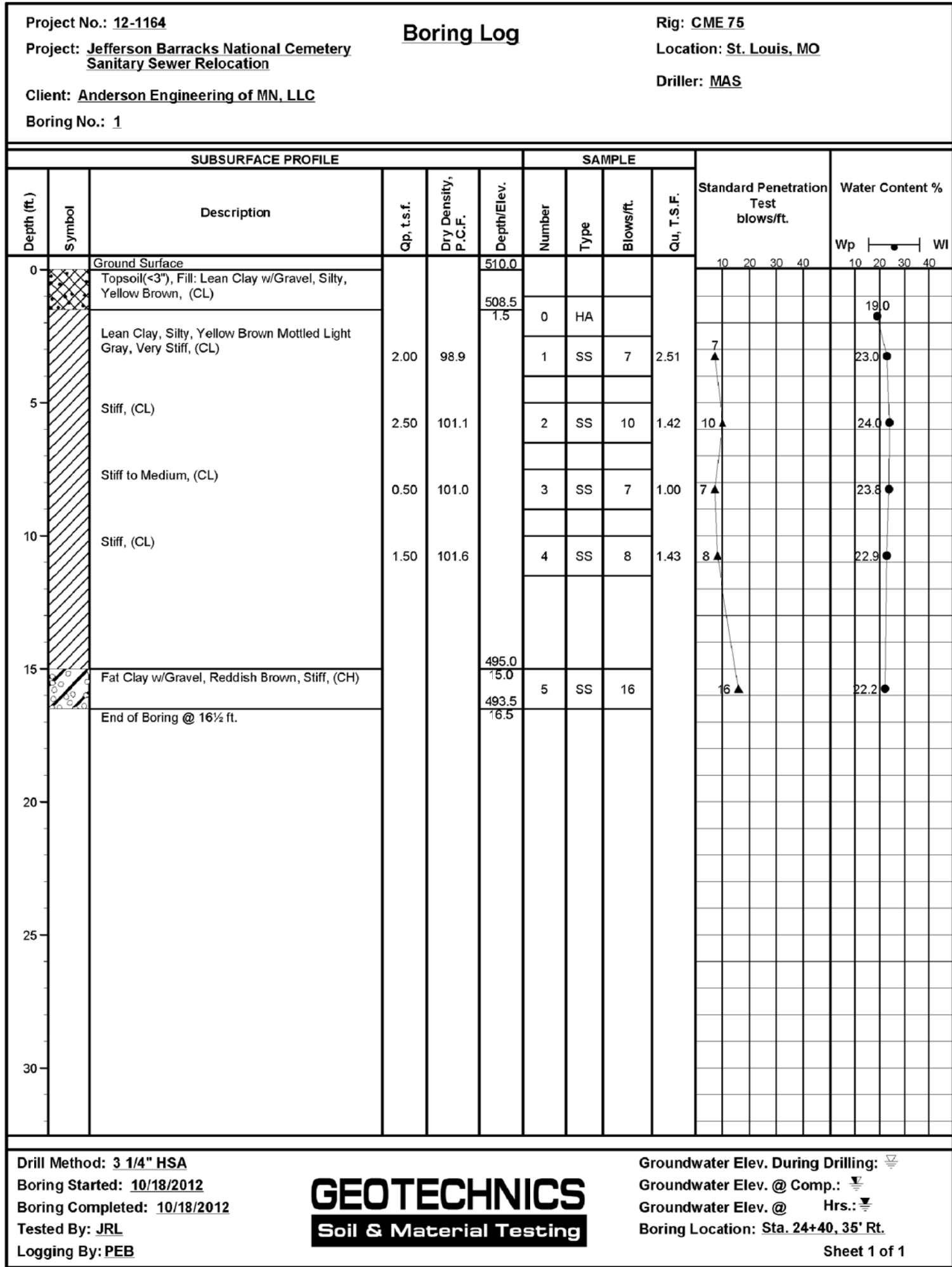


BORING LOGS



NOTE:  
SEE SPECIFICATION FOR FULL GEOTECHNICAL REPORT, BY GEOTECHNICS DATED NOVEMBER 1, 2012

BORING PROBE LOGS

Boring Number	Elevation	Depth where rock fragments/weathered rock encountered (ft)	Refusal Depth(ft)
4	513.04	16.5 clay/weathered rock/18 weathered rock	18.5
5	514.42	16	17
6	516.31	14.5	15.5
7	516.73	19	20
8	516.12	16.5 trace rock fragments/17.5 weathered rock	20.5
9	514.55	17.5	18.5
10	508.97	17 with rock fragments/18 weathered rock	18.5
11	506.18	17	18
12	502.90	25	28.5

NOTE:  
NO GEOTECHNICAL REPORT WAS PREPARED AS PART OF THIS INVESTIGATION.  
ROCK DEPTH PROBE RECORD COMPLETED BY MIDWEST DRILLING INC. ON DECEMBER 4, 2013

CONSULTANTS:		ARCHITECT/ENGINEERS:		Drawing Title		Project Title		Project Number		Office of Construction and Facilities Management	
		I HEREBY CERTIFY THAT THIS INVESTIGATION, OR REPORT WAS PREPARED BY ME OR UNDER MY DIRECT SUPERVISION AND THAT I AM A DULY LICENSED PROFESSIONAL ENGINEER UNDER THE LAWS OF THE STATE OF MISSOURI. PRINT NAME: GARY R. JOHNSON, P.E. SIGNATURE: [Signature] DATE: March 28, 2013 Professional Engineer No. 2012005390		ANDERSON ENGINEERING ENGINEERING • ARCHITECTURE • LAND SURVEYING ENVIRONMENTAL SERVICES • LANDSCAPE ARCHITECTURE Anderson Engineering of Minnesota, LLC 13605 1st Avenue North Suite 100 Plymouth, MN 55441 763-412-4000 (o) 763-412-4090 (f) www.ae-mn.com		GEOTECHNICAL BORING LOGS		SEWER RELOCATION			
Revisions:				Approved Project Director		Location ST. LOUIS, MO		Drawing Reference Number		Drawing Number	
						Date 3-28-16		Checked AMT		Drawn PSH	
								B-2		Dwg. 3 OF 17	

P-0029720-00  
BASE MAP 29H3  
**BID DOCUMENTS**

Office of Construction and Facilities Management

