

REV	DESCRIPTION	BY	DATE	-	----	--	--/--/--	-	----	--	--/--/--
-	----	--	--/--/--	-	----	--	--/--/--	-	----	--	--/--/--

VA ALEXANDRIA CAMPUS
ALEXANDRIA, LOUISIANA
ADVANCED METERING PROJECT
AS-BUILT

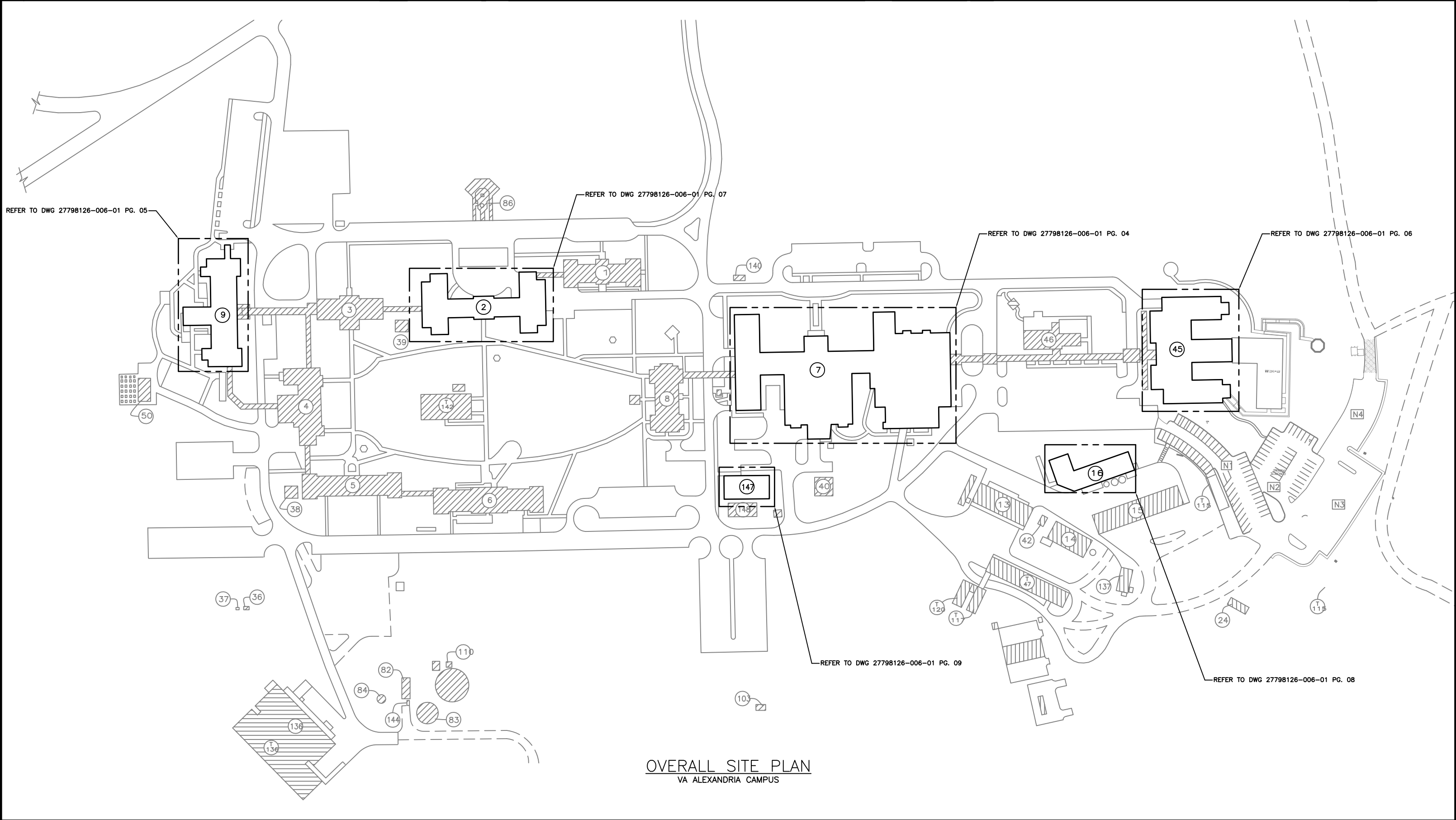
TABLE OF CONTENTS				
DRAWING NUMBER	PAGE	REV	DRAWING TYPE	STATUS
27798126-006-01	01		TITLE SHEET & TABLE OF CONTENTS	AS-BUILT
27798126-006-01	02		TYPICAL CUTSHEET TABLE REFERENCE	AS-BUILT
27798126-006-01	03		VA ALEXANDRIA CAMPUS SITE PLAN	AS-BUILT
27798126-006-01	04		VA ALEXANDRIA CAMPUS FLOOR PLAN (BUILDING 7)	AS-BUILT
27798126-006-01	05		VA ALEXANDRIA CAMPUS FLOOR PLAN (BUILDING 9)	AS-BUILT
27798126-006-01	06		VA ALEXANDRIA CAMPUS FLOOR PLAN (BUILDING 45)	AS-BUILT
27798126-006-01	07		VA ALEXANDRIA CAMPUS FLOOR PLAN (BUILDING 2)	AS-BUILT
27798126-006-01	08		VA ALEXANDRIA CAMPUS FLOOR PLAN (BUILDING 16)	AS-BUILT
27798126-006-01	09		VA ALEXANDRIA CAMPUS FLOOR PLAN (BUILDING 147)	AS-BUILT
27798126-006-CM	10		VA ALEXANDRIA CAMPUS NETWORK DIAGRAM (BUILDING 7)	AS-BUILT
27798126-006-CM	11		VA ALEXANDRIA CAMPUS NETWORK DIAGRAM (BUILDINGS 2 & 9)	AS-BUILT
27798126-006-CM	12		VA ALEXANDRIA CAMPUS NETWORK DIAGRAM (BUILDING 16)	AS-BUILT
27798126-006-CM	13		VA ALEXANDRIA CAMPUS NETWORK DIAGRAM (BUILDINGS 45 & 147)	AS-BUILT
27798126-006-CM	14		VA ALEXANDRIA CAMPUS NETWORK DETAILS	AS-BUILT
27798126-006-01	15		VA ALEXANDRIA CAMPUS PARTIAL ONE-LINES	AS-BUILT
27798126-006-01	16		VA ALEXANDRIA CAMPUS PARTIAL ONE-LINES	AS-BUILT
27798126-006-01	17		VA ALEXANDRIA CAMPUS WIRING SCHEMATIC (TYPICAL NEW METER ENCLOSURE (SYSTEM ID 40))	AS-BUILT

REV	DESCRIPTION	BY	DATE	-	----	--	--/--/--	-	----	--	--/--/--
-	----	--	--/--/--	-	----	--	--/--/--	-	----	--	--/--/--

CUTSHEET REFERENCE TABLE		
Document Number	Description	File Name Reference
01	Square D PowerLogic Factory Assembled Enclosures Installation Guide	Item 1 – Enclosure Instruction Bulletin.pdf
02	Phoenix Contact 24VDC Power Supply Data Sheet	Item 2 – 2866750 PC Power supply.pdf
03	Maxrad Access Point Radio Antenna Data Sheet	Item 3 – Antenna Maxrad MFB9157.pdf
04	Kathrein–Scala TY–900 Remote Radio Antenna Data Sheet	Item 4 – Antenna TY–900.pdf
05	Bussman Compact Circuit Protector Disconnect Switch Data Sheet	Item 5 – CCP Fusible disconnect.pdf
06	Bussman FNQ–R Fuse Specification Sheet	Item 6 – FNQ–R Fuses.pdf
07	Flex–Core Shorting Terminal Block Data Sheet	Item 7 – IKU Shorting Terminal Blocks.pdf
08	PD–395 Lightning Arrestor Specification Sheet	Item 8 – Lightning Arrestor Parameters.pdf
09	Heliax Coaxial Cable Data Sheet	Item 9 – LDF4RN–50A Heliax Coaxial Cable.pdf
10	MDS iNET–II 900 Ethernet Remote Radio Specification Sheet	Item 10 – MDS iNETII 900 Mhz Radio.pdf
11	MDS Wireless Radio Enclosure Specification Sheet	Item 11 – MDS Packaged Radio Series Data Sheet.pdf
12	Kathrein–Scala Access Point Antenna (Low Gain) Data Sheet	Item 12 – Unity Omni Antenna.pdf
13	Flex–Core CT Data Sheet	Item 13 – Flex Core CT Data Sheet. pdf
14	Schneider Electric 9070T250D32 Industrial Control Transformer	Item 14 – Control Power Transformer.pdf
15	MTS Wireless Mounting Hardware Product Guide	Item 15 – Steel Wireless Mounting Hardware.pdf
16	Square D PowerLogic Power Meter 800 Series Product Application Guide	Item 16 – PM800 Spec Overview.pdf
17	Belden Serial Communication Cable Specification Sheet	Item 17 – Belden Cables.pdf
18	Equipment Penetration and Firestopping Installation Guide	Item 18 – Penetration & Firestopping.pdf
19	Equipment Mounting Anchor Installation Guide	Item 19 – Mounting Anchor.pdf
20	Cable Tie Specification Guide	Item 20 – Cable Ties.pdf
21	Cisco Ethernet Hardwire Router Data Sheet	Item 21 – Cisco Router.pdf
22	Cisco Ethernet Wireless Router Data Sheet	Item 22 – Cisco Wireless Router.pdf
23	Ethernet Extender Specification Sheet	Item 23 – EIR–Extend–0408ds Ethernet Extender.pdf
24	Mean Well Power Supply Data Sheet	Item 24 – MDR–40 Power Supply Spec.pdf
25	Panel Mount Wireless Antenna Specification Sheet	Item 25 – MP800900 PCTEL Panel Mount Antenna.pdf
26	DSL Modem Data Sheet	Item 26 – Netopia 4600 Series Router.pdf
27	Wireless Enclosure Installation Guide	Item 27 – MDS P–60 Enclosure Installation Guidelines.pdf
28	Ntron Eight Port Ethernet Switch	Item 28 – 108TX_Datasheet.pdf
29	E–Linx Five Port Ethernet Switch	Item 29 – EIR205 Series 2709–ds Industrial DCV Switch.pdf

© SCHNEIDER ELECTRIC USA, INC. THIS DRAWING AND/OR SPECIFICATIONS CONTAINS INFORMATION PROPRIETARY TO SCHNEIDER ELECTRIC, IT IS SUBMITTED IN CONFIDENCE AND IS TO BE USED SOLELY FOR THE PURPOSE FOR WHICH IT IS FURNISHED. SCHNEIDER ELECTRIC OWNS ALL COPYRIGHT, DESIGN AND INVENTION RIGHTS FOR THE DATA AND/OR MATERIAL DISCLOSED HEREIN. ALL DRAWINGS AND WRITTEN MATERIAL APPEARING HEREIN MAY NOT BE REPRODUCED, TRANSMITTED, DISCLOSED OR USED OTHERWISE IN WHOLE OR IN PART WITHOUT WRITTEN AUTHORIZATION OF SCHNEIDER ELECTRIC.	SCHNEIDER ELECTRIC USA, INC.		JOB NAME:	VA ALEXANDRIA CAMPUS	EQUIPMENT DESIGNATION:		—		
			JOB LOCATION:	ALEXANDRIA, LOUISIANA	EQUIPMENT TYPE:		VISN 16		
			DRAWN BY:	DONALD FREITAS	DRAWING TYPE:		TYPICAL CUTSHEET TABLE REFERENCE		
	CHECKED BY:	ALAN WATSON	ENGR:	MIKE ANDERSON	<div>Schneider Electric</div>				
	CHECKED DATE:	FEBRUARY 25, 2011	DATE:	FEBRUARY 25, 2011					
	PLANT LOCATION:	P48 (ENG SVCS — PROJECTS)	DRAWING STATUS:	AS—BUILT					
					DWG#	27798126—006—01	PG 02	OF 17	REV —

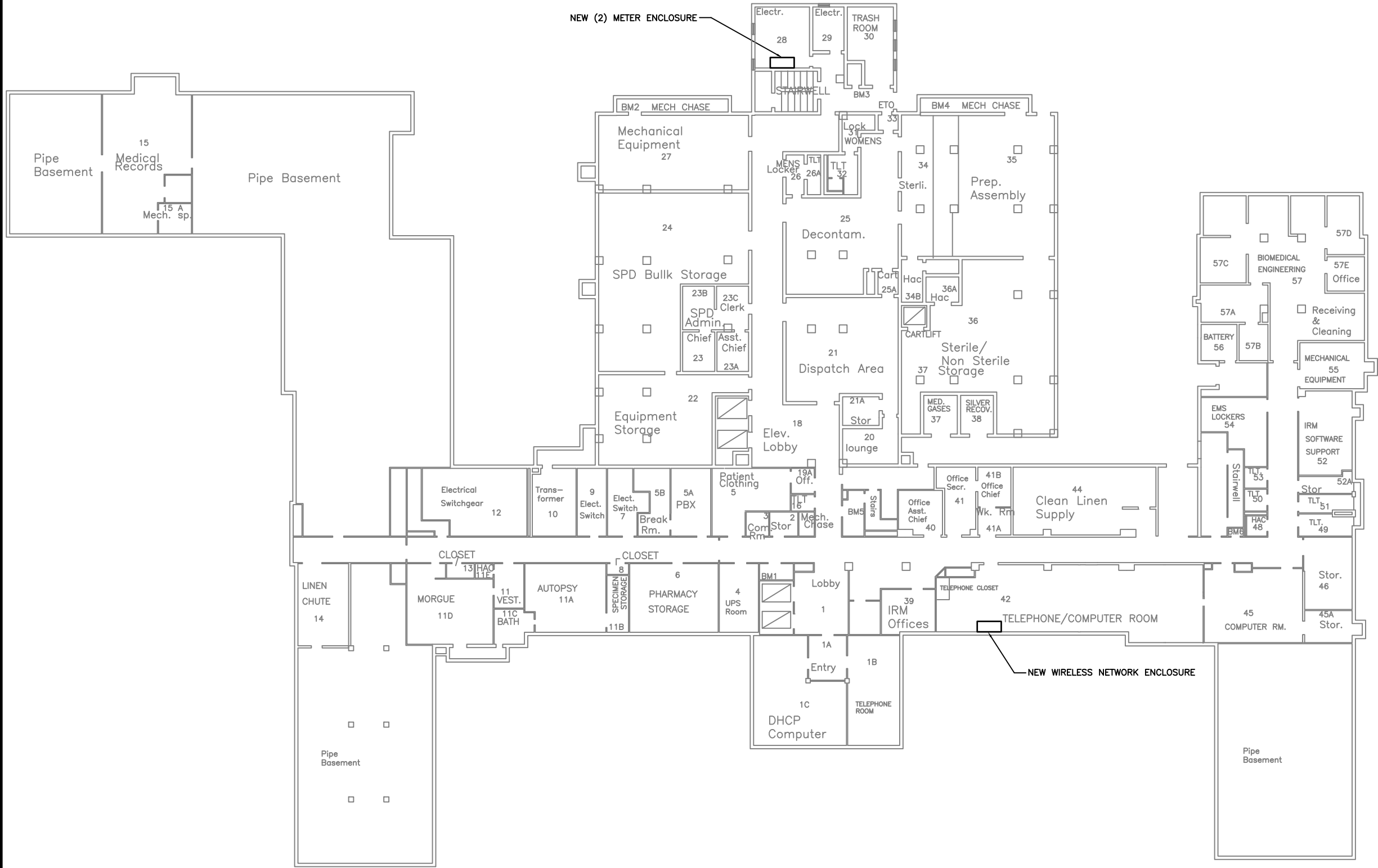
REV	DESCRIPTION	BY	DATE	-	----	--	--/---/---	-	----	--	--/---/---
-	----	--	--/---/---	-	----	--	--/---/---	-	----	--	--/---/---



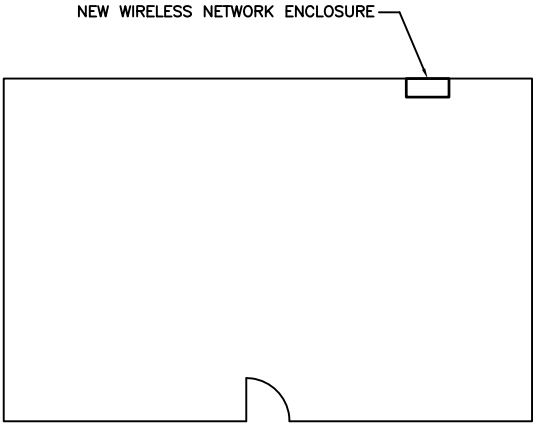
OVERALL SITE PLAN
VA ALEXANDRIA CAMPUS

© SCHNEIDER ELECTRIC USA, INC. THIS DRAWING AND/OR SPECIFICATIONS CONTAINS INFORMATION PROPRIETARY TO SCHNEIDER ELECTRIC, IT IS SUBMITTED IN CONFIDENCE AND IS TO BE USED SOLELY FOR THE PURPOSE FOR WHICH IT IS FURNISHED. SCHNEIDER ELECTRIC OWNS ALL COPYRIGHT, DESIGN AND INVENTION RIGHTS FOR THE DATA AND/OR MATERIAL DISCLOSED HEREIN. ALL DRAWINGS AND WRITTEN MATERIAL APPEARING HEREIN MAY NOT BE REPRODUCED, TRANSMITTED, DISCLOSED OR USED OTHERWISE IN WHOLE OR IN PART WITHOUT WRITTEN AUTHORIZATION OF SCHNEIDER ELECTRIC.	SCHNEIDER ELECTRIC USA, INC.		JOB NAME:	VA ALEXANDRIA CAMPUS	EQUIPMENT DESIGNATION:	-
			JOB LOCATION:	ALEXANDRIA, LOUISIANA	EQUIPMENT TYPE:	VISN 16
	CHECKED BY: ALAN WATSON		DRAWN BY:	DONALD FREITAS	DRAWING TYPE: ALEXANDRIA VA OVERALL SITE PLAN	
	CHECKED DATE: FEBRUARY 25, 2011		ENGR:	MIKE ANDERSON		
	PLANT LOCATION: P48 (ENG SVCS - PROJECTS)		DATE:	FEBRUARY 25, 2011	<div>Schneider Electric</div>	
			DRAWING STATUS:	AS-BUILT		
					DWG# 27798126-006-01	PG 03 OF 17
					REV -	

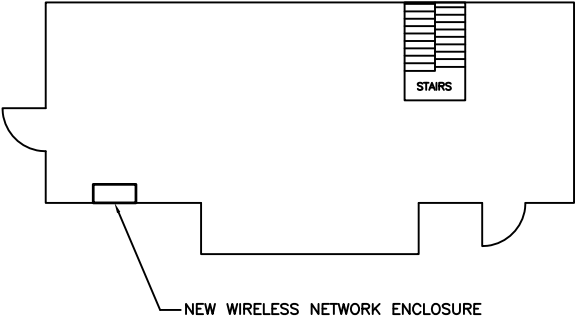
REV	DESCRIPTION	BY	DATE	-	----	--	--/--/--	-	----	--	--/--/--
-	----	--	--/--/--	-	----	--	--/--/--	-	----	--	--/--/--




BUILDING 7 FLOOR PLAN
VA ALEXANDRIA CAMPUS



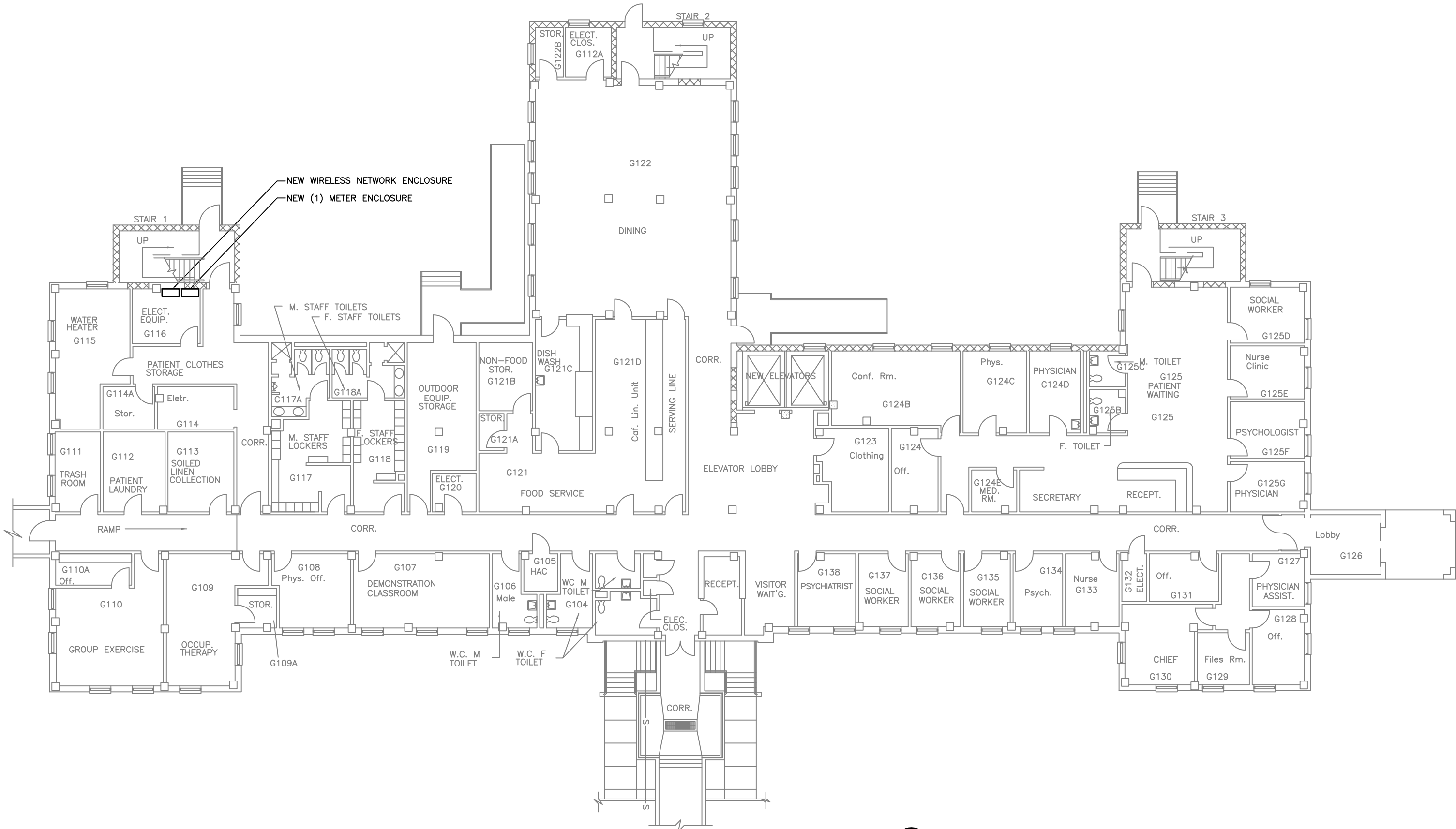
PENTHOUSE (2) FLOOR PLAN
VA ALEXANDRIA CAMPUS



PENTHOUSE (1) FLOOR PLAN
VA ALEXANDRIA CAMPUS


© SCHNEIDER ELECTRIC USA, INC. THIS DRAWING AND/OR SPECIFICATIONS CONTAINS INFORMATION PROPRIETARY TO SCHNEIDER ELECTRIC, IT IS SUBMITTED IN CONFIDENCE AND IS TO BE USED SOLELY FOR THE PURPOSE FOR WHICH IT IS FURNISHED. SCHNEIDER ELECTRIC OWNS ALL COPYRIGHT, DESIGN AND INVENTION RIGHTS FOR THE DATA AND/OR MATERIAL DISCLOSED HEREIN. ALL DRAWINGS AND WRITTEN MATERIAL APPEARING HEREIN MAY NOT BE REPRODUCED, TRANSMITTED, DISCLOSED OR USED OTHERWISE IN WHOLE OR IN PART WITHOUT WRITTEN AUTHORIZATION OF SCHNEIDER ELECTRIC.	SCHNEIDER ELECTRIC USA, INC.		JOB NAME:	VA ALEXANDRIA CAMPUS	EQUIPMENT DESIGNATION:	BUILDING 7				
			JOB LOCATION:	ALEXANDRIA, LOUISIANA	EQUIPMENT TYPE:	VISN 16				
	CHECKED BY:		ALAN WATSON	DRAWN BY:	DONALD FREITAS	DRAWING TYPE:	ALEXANDRIA VA FLOOR PLAN			
	CHECKED DATE:		FEBRUARY 25, 2011	ENGR:	MIKE ANDERSON					
	PLANT LOCATION:		P48 (ENG SVCS – PROJECTS)	DATE:	FEBRUARY 25, 2011					
				DRAWING STATUS:	AS-BUILT	DWG#	27798126-006-01	PG 04	OF 17	REV –

REV	DESCRIPTION	BY	DATE	-	----	--	--/--/--	-	----	--	--/--/--
-	----	--	--/--/--	-	----	--	--/--/--	-	----	--	--/--/--

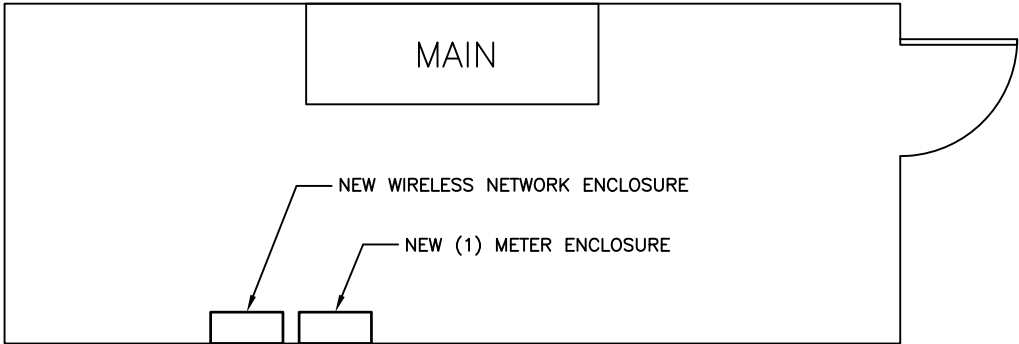


BUILDING 9, ROOM 115D FLOOR PLAN
VA ALEXANDRIA CAMPUS



© SCHNEIDER ELECTRIC USA, INC. THIS DRAWING AND/OR SPECIFICATIONS CONTAINS INFORMATION PROPRIETARY TO SCHNEIDER ELECTRIC, IT IS SUBMITTED IN CONFIDENCE AND IS TO BE USED SOLELY FOR THE PURPOSE FOR WHICH IT IS FURNISHED. SCHNEIDER ELECTRIC OWNS ALL COPYRIGHT, DESIGN AND INVENTION RIGHTS FOR THE DATA AND/OR MATERIAL DISCLOSED HEREIN. ALL DRAWINGS AND WRITTEN MATERIAL APPEARING HEREIN MAY NOT BE REPRODUCED, TRANSMITTED, DISCLOSED OR USED OTHERWISE IN WHOLE OR IN PART WITHOUT WRITTEN AUTHORIZATION OF SCHNEIDER ELECTRIC.	SCHNEIDER ELECTRIC USA, INC.		JOB NAME:	VA ALEXANDRIA CAMPUS	EQUIPMENT DESIGNATION:	BUILDING 9				
			JOB LOCATION:	ALEXANDRIA, LOUISIANA	EQUIPMENT TYPE:	VISN 16				
	CHECKED BY:		ALAN WATSON	DRAWN BY:	DONALD FREITAS	DRAWING TYPE:	ALEXANDRIA VA FLOOR PLAN			
	CHECKED DATE:		FEBRUARY 25, 2011	ENGR:	MIKE ANDERSON					
	PLANT LOCATION:		P48 (ENG SVCS – PROJECTS)	DATE:	FEBRUARY 25, 2011					
				DRAWING STATUS:	AS-BUILT	DWG#	27798126-006-01	PG 05	OF 17	REV –

REV	DESCRIPTION	BY	DATE	-	----	--	--/--/--	-	----	--	--/--/--
-	----	--	--/--/--	-	----	--	--/--/--	-	----	--	--/--/--

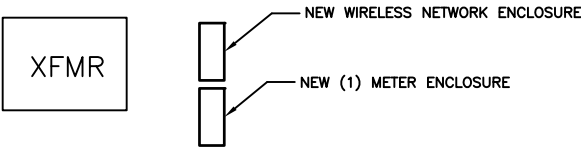


BUILDING 45, ROOM 1M2 FLOOR PLAN
VA ALEXANDRIA CAMPUS

© SCHNEIDER ELECTRIC USA, INC. THIS DRAWING AND/OR SPECIFICATIONS CONTAINS INFORMATION PROPRIETARY TO SCHNEIDER ELECTRIC, IT IS SUBMITTED IN CONFIDENCE AND IS TO BE USED SOLELY FOR THE PURPOSE FOR WHICH IT IS FURNISHED. SCHNEIDER ELECTRIC OWNS ALL COPYRIGHT, DESIGN AND INVENTION RIGHTS FOR THE DATA AND/OR MATERIAL DISCLOSED HEREIN. ALL DRAWINGS AND WRITTEN MATERIAL APPEARING HEREIN MAY NOT BE REPRODUCED, TRANSMITTED, DISCLOSED OR USED OTHERWISE IN WHOLE OR IN PART WITHOUT WRITTEN AUTHORIZATION OF SCHNEIDER ELECTRIC.	SCHNEIDER ELECTRIC USA, INC.		JOB NAME:	VA ALEXANDRIA CAMPUS	EQUIPMENT DESIGNATION:	BUILDING 45			
			JOB LOCATION:	ALEXANDRIA, LOUISIANA	EQUIPMENT TYPE:	VISN 16			
			DRAWN BY:	DONALD FREITAS	DRAWING TYPE:	ALEXANDRIA VA FLOOR PLAN			
	CHECKED BY:	ALAN WATSON	ENGR:	MIKE ANDERSON	<div>Schneider Electric</div>				
	CHECKED DATE:	FEBRUARY 25, 2011	DATE:	FEBRUARY 25, 2011					
	PLANT LOCATION:	P48 (ENG SVCS – PROJECTS)		DRAWING STATUS:	AS–BUILT	DWG#	27798126–006–01	PG 06	OF 17

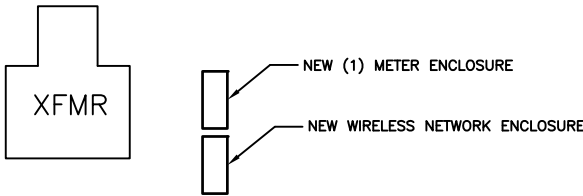
REV	DESCRIPTION	BY	DATE	-	----	--	--/---/---	-	----	--	--/---/---
-	----	--	--/---/---	-	----	--	--/---/---	-	----	--	--/---/---

OUTSIDE BUILDING (LAUNDRY)



OUTSIDE (LAUNDRY) FLOOR PLAN
VA ALEXANDRIA CAMPUS

OUTSIDE BUILDING (HVAC)

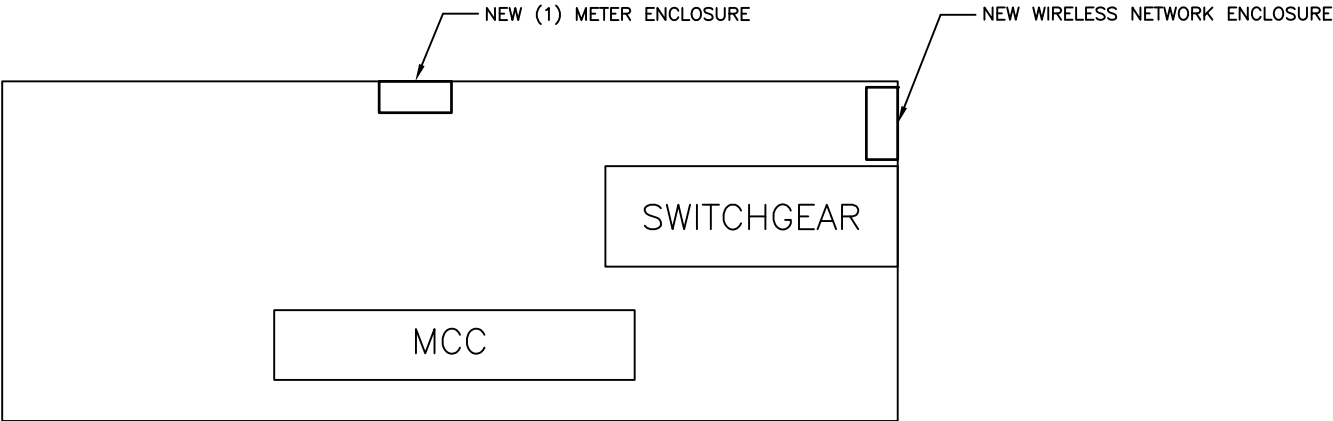


OUTSIDE (HVAC) FLOOR PLAN
VA ALEXANDRIA CAMPUS

BUILDING 16 FLOOR PLAN
VA ALEXANDRIA CAMPUS

© SCHNEIDER ELECTRIC USA, INC. THIS DRAWING AND/OR SPECIFICATIONS CONTAINS INFORMATION PROPRIETARY TO SCHNEIDER ELECTRIC, IT IS SUBMITTED IN CONFIDENCE AND IS TO BE USED SOLELY FOR THE PURPOSE FOR WHICH IT IS FURNISHED. SCHNEIDER ELECTRIC OWNS ALL COPYRIGHT, DESIGN AND INVENTION RIGHTS FOR THE DATA AND/OR MATERIAL DISCLOSED HEREIN. ALL DRAWINGS AND WRITTEN MATERIAL APPEARING HEREIN MAY NOT BE REPRODUCED, TRANSMITTED, DISCLOSED OR USED OTHERWISE IN WHOLE OR IN PART WITHOUT WRITTEN AUTHORIZATION OF SCHNEIDER ELECTRIC.	SCHNEIDER ELECTRIC USA, INC.		JOB NAME:	VA ALEXANDRIA CAMPUS	EQUIPMENT DESIGNATION:	BUILDING 16			
			JOB LOCATION:	ALEXANDRIA, LOUISIANA	EQUIPMENT TYPE:	VISN 16			
			DRAWN BY:	DONALD FREITAS	DRAWING TYPE:	ALEXANDRIA VA FLOOR PLAN			
	CHECKED BY:	ALAN WATSON	ENGR:	MIKE ANDERSON	<div>Schneider Electric</div>				
	CHECKED DATE:	FEBRUARY 25, 2011	DATE:	FEBRUARY 25, 2011					
	PLANT LOCATION:	P48 (ENG SVCS – PROJECTS)		DRAWING STATUS:	AS–BUILT	DWG#	27798126–006–01	PG 08	OF 17

REV	DESCRIPTION	BY	DATE	-	----	--	--/---/---	-	----	--	--/---/---
-	----	--	--/---/---	-	----	--	--/---/---	-	----	--	--/---/---

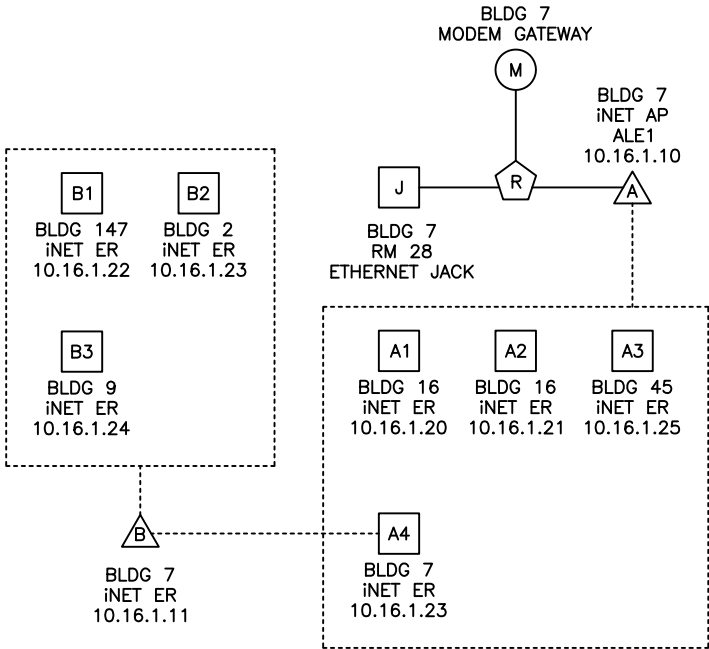
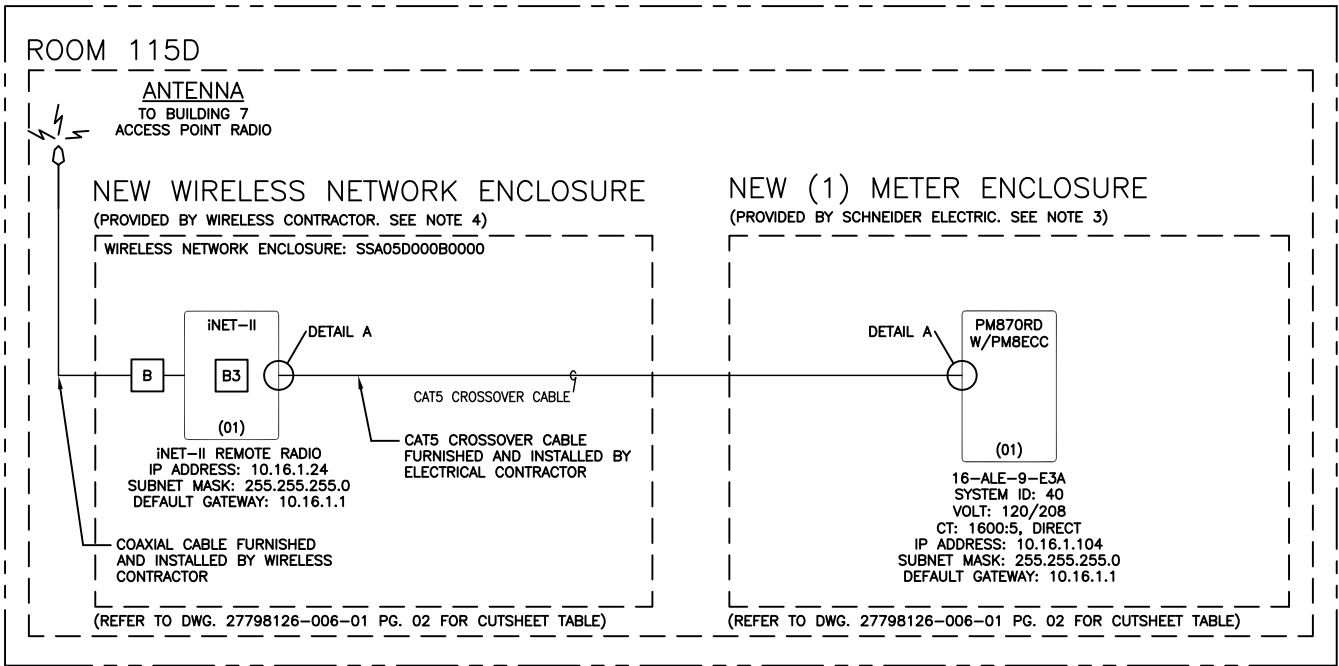


ONE ROOM BUIDLING 147 FLOOR PLAN
VA ALEXANDRIA CAMPUS

© SCHNEIDER ELECTRIC USA, INC. THIS DRAWING AND/OR SPECIFICATIONS CONTAINS INFORMATION PROPRIETARY TO SCHNEIDER ELECTRIC, IT IS SUBMITTED IN CONFIDENCE AND IS TO BE USED SOLELY FOR THE PURPOSE FOR WHICH IT IS FURNISHED. SCHNEIDER ELECTRIC OWNS ALL COPYRIGHT, DESIGN AND INVENTION RIGHTS FOR THE DATA AND/OR MATERIAL DISCLOSED HEREIN. ALL DRAWINGS AND WRITTEN MATERIAL APPEARING HEREIN MAY NOT BE REPRODUCED, TRANSMITTED, DISCLOSED OR USED OTHERWISE IN WHOLE OR IN PART WITHOUT WRITTEN AUTHORIZATION OF SCHNEIDER ELECTRIC.	SCHNEIDER ELECTRIC USA, INC.		JOB NAME:	VA ALEXANDRIA CAMPUS	EQUIPMENT DESIGNATION:	BUILDING 147			
			JOB LOCATION:	ALEXANDRIA, LOUISIANA	EQUIPMENT TYPE:	VISN 16			
			DRAWN BY:	DONALD FREITAS	DRAWING TYPE:	ALEXANDRIA VA FLOOR PLAN			
	CHECKED BY:	ALAN WATSON	ENGR:	MIKE ANDERSON	<div>Schneider Electric</div>				
	CHECKED DATE:	FEBRUARY 25, 2011	DATE:	FEBRUARY 25, 2011					
	PLANT LOCATION:	P48 (ENG SVCS – PROJECTS)		DRAWING STATUS:	AS–BUILT	DWG#	27798126–006–01	PG 09	OF 17

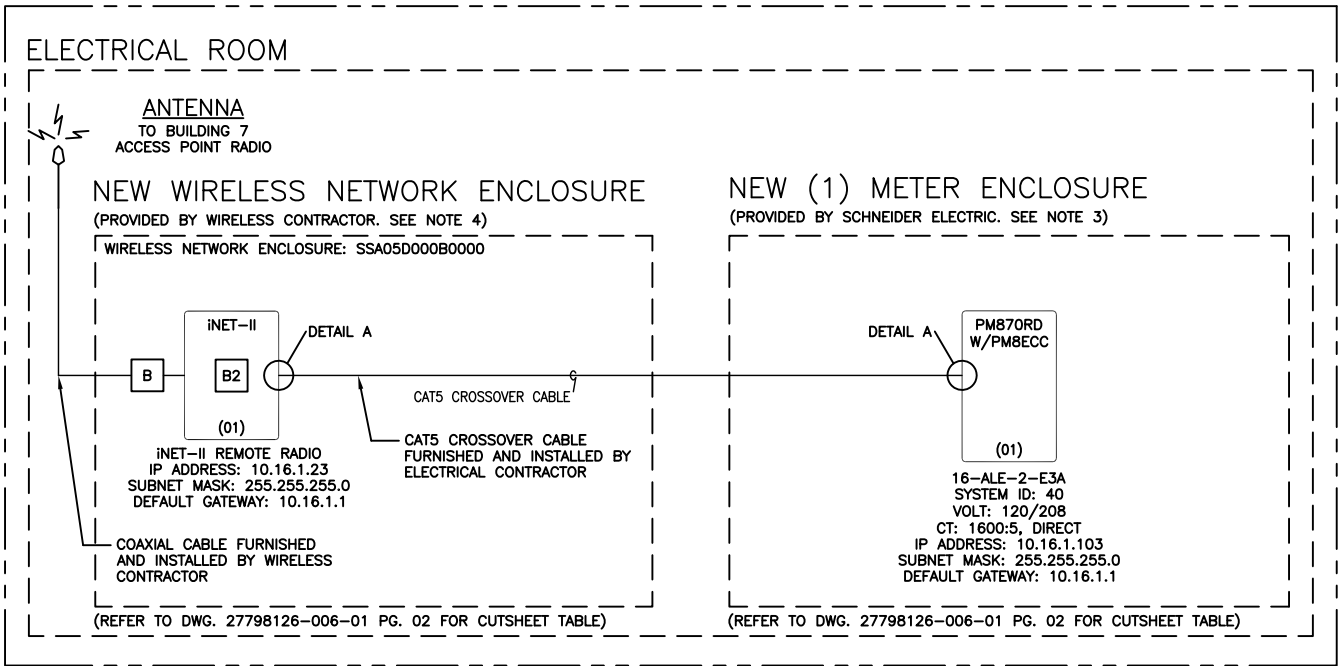
REV	DESCRIPTION	BY	DATE	—	----	--	--/--/--	—	----	--	--/--/--
—	----	--	--/--/--	—	----	--	--/--/--	—	----	--	--/--/--

BUILDING 9



WIRELESS NETWORK DIAGRAM
VA ALEXANDRIA CAMPUS

BUILDING 2



NETWORK DIAGRAM
VA ALEXANDRIA CAMPUS

WIRELESS LEGEND

- | | | | |
|-----|-------------------|------|-----------------------------|
| (M) | MODEM | (J) | ETHERNET JACK/DROP |
| (R) | ROUTER | (A) | RADIO ACCESS FPOINT |
| (E) | ETHERNET SWITCH | (A1) | RADIO REMOTE |
| (X) | ETHERNET EXTENDER | (B) | BULKHEAD LIGHTNING ARRESTER |

NOTES:

- ELECTRICAL EQUIPMENT SHALL BE INSTALLED, OPERATED, SERVICED, AND MAINTAINED ONLY BY QUALIFIED PERSONNEL.
- ALL DETAILS LISTED HEREIN ARE FOR GENERAL REFERENCE ONLY AND SHALL BE USED ACCORDINGLY. EQUIPMENT SHALL BE INSTALLED IN ACCORDANCE WITH ALL LOCAL AND NEC CODES. REFER TO PROVIDED SQUARE D POWERLOGIC FACTORY ASSEMBLED ENCLOSURES INSTRUCTION BULLETIN 63230-020-59 A1 FOR ADDITIONAL DETAILS, PERTAINING TO THE METER ENCLOSURE INSTALLATION.
- ALL ENCLOSURES PROVIDED BY SCHNEIDER ELECTRIC THAT WILL HOUSE REMOTE RADIOS PROVIDED BY THE WIRELESS CONTRACTOR WILL BE EQUIPPED WITH INTEGRATED LIGHTNING ARRESTORS INSTALLED. 24VDC CONTROL POWER WILL BE MADE AVAILABLE FOR POWERING.
- ALL WIRELESS NETWORK ENCLOSURES AND ITS ASSOCIATED CONTENTS, COAX CABLES/HARDWARE, ETHERNET JACKS, ANTENNAS, AND ALL OTHER MISCELLANEOUS HARDWARE NEEDED TO COMPLETE THE INSTALLATION OF THE WIRELESS SYSTEM IS THE RESPONSIBILITY OF THE WIRELESS CONTRACTOR AS DIRECTED BY SCHNEIDER ELECTRIC.
- ALL OUTDOOR COAX TERMINATIONS SHALL BE MADE WITH A SELF HEALING WEATHERPROOF TAPE SUCH AS 3M SCOTCH 2228 OR EQUAL.
- COAX CABLE MUST BE GROUNDED TO A PERMANENT SYSTEM GROUND.

© SCHNEIDER ELECTRIC USA, INC.
THIS DRAWING AND/OR SPECIFICATIONS CONTAINS INFORMATION PROPRIETARY TO SCHNEIDER ELECTRIC, IT IS SUBMITTED IN CONFIDENCE AND IS TO BE USED SOLELY FOR THE PURPOSE FOR WHICH IT IS FURNISHED. SCHNEIDER ELECTRIC OWNS ALL COPYRIGHT, DESIGN AND INVENTION RIGHTS FOR THE DATA AND/OR MATERIAL DISCLOSED HEREIN. ALL DRAWINGS AND WRITTEN MATERIAL APPEARING HEREIN MAY NOT BE REPRODUCED, TRANSMITTED, DISCLOSED OR USED OTHERWISE IN WHOLE OR IN PART WITHOUT WRITTEN AUTHORIZATION OF SCHNEIDER ELECTRIC.

SCHNEIDER ELECTRIC USA, INC.

CHECKED BY: ALAN WATSON

CHECKED DATE: FEBRUARY 25, 2011

PLANT LOCATION: P48 (ENG SVCS – PROJECTS)

JOB NAME: VA ALEXANDRIA CAMPUS

JOB LOCATION: ALEXANDRIA, LOUISIANA

DRAWN BY: DONALD FREITAS

ENGR: MIKE ANDERSON

DATE: FEBRUARY 25, 2011

DRAWING STATUS: AS-BUILT

EQUIPMENT DESIGNATION: BUILDINGS 2 & 9

EQUIPMENT TYPE: VISN 16

DRAWING TYPE: ALEXANDRIA VA NETWORK DIAGRAM

Schneider
Electric

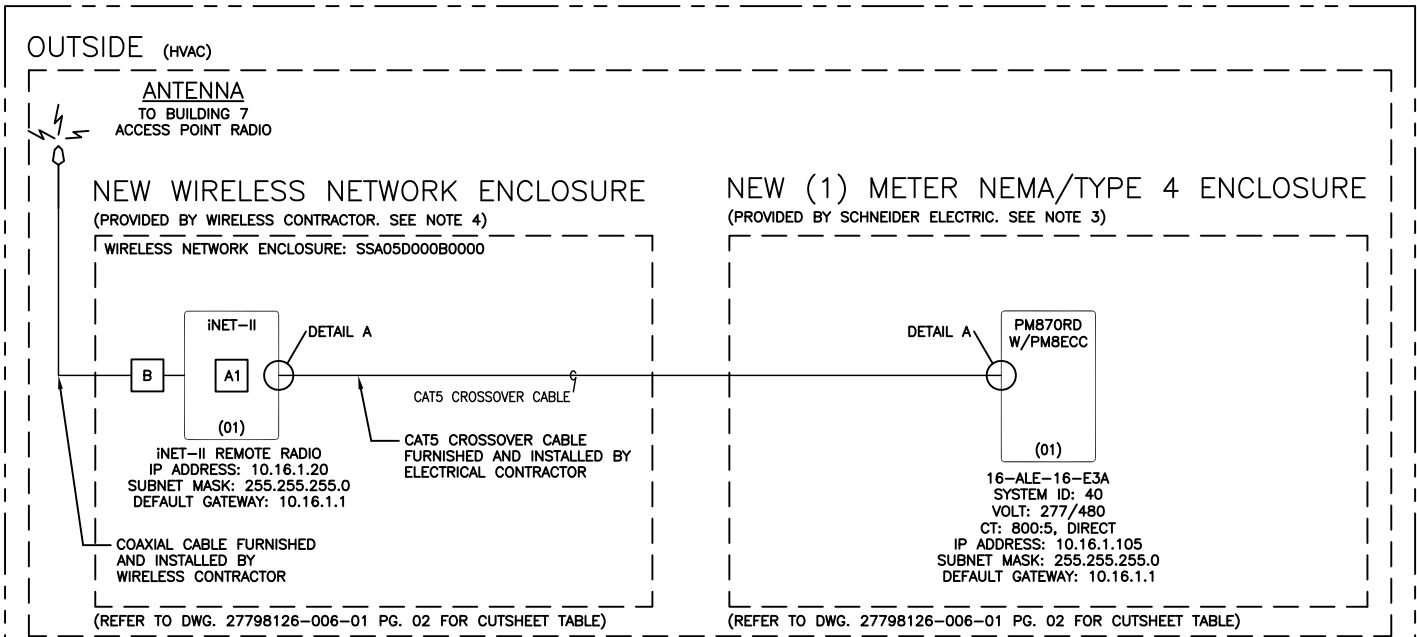
DWG# 27798126-006-01

PG 11 OF 17

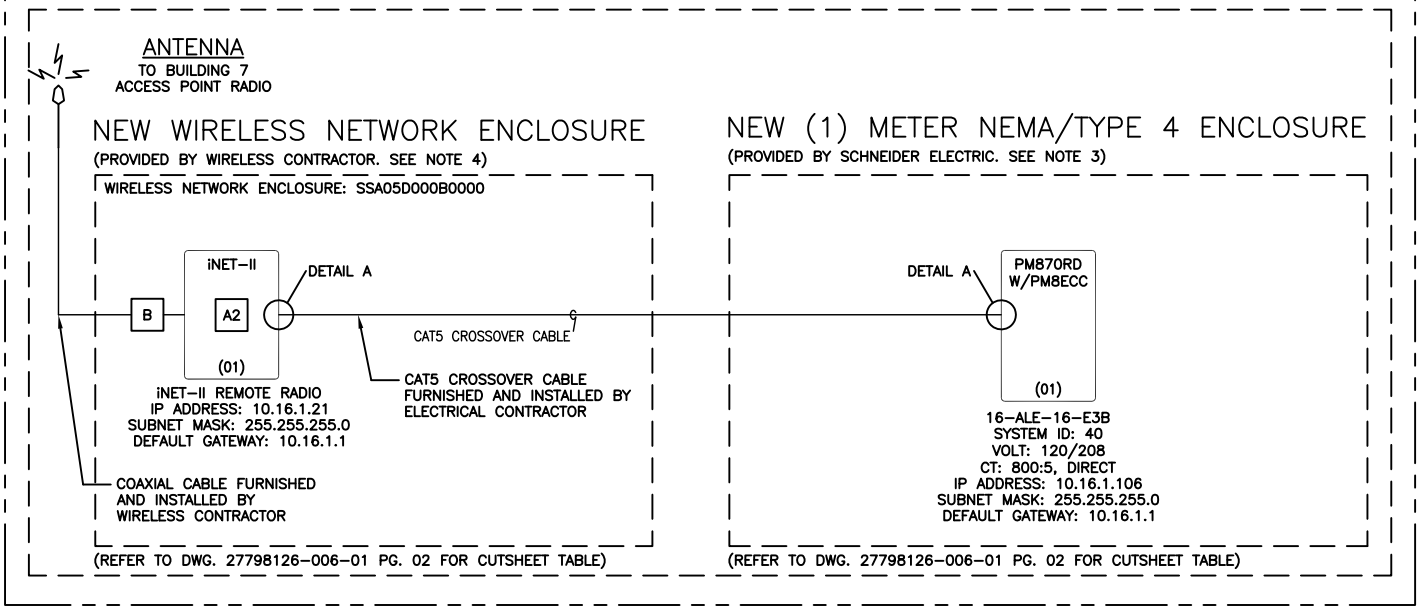
REV –

REV	DESCRIPTION	BY	DATE										
---	----	---	---/---/---	---	----	---	---	---/---/---	---	----	---	---	---/---/---
---	----	---	---/---/---	---	----	---	---	---/---/---	---	----	---	---	---/---/---

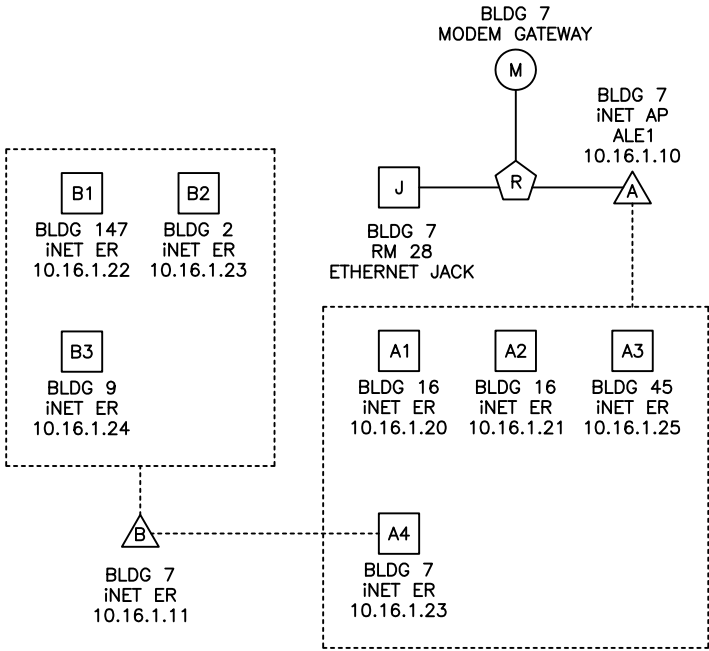
BUILDING 16



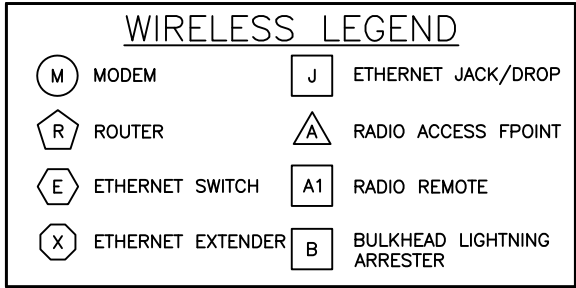
OUTSIDE (LAUNDRY)



NETWORK DIAGRAM
VA ALEXANDRIA CAMPUS



WIRELESS NETWORK DIAGRAM
VA ALEXANDRIA CAMPUS



NOTES:

- ELECTRICAL EQUIPMENT SHALL BE INSTALLED, OPERATED, SERVICED, AND MAINTAINED ONLY BY QUALIFIED PERSONNEL.
- ALL DETAILS LISTED HEREIN ARE FOR GENERAL REFERENCE ONLY AND SHALL BE USED ACCORDINGLY. EQUIPMENT SHALL BE INSTALLED IN ACCORDANCE WITH ALL LOCAL AND NEC CODES. REFER TO PROVIDED SQUARE D POWERLOGIC FACTORY ASSEMBLED ENCLOSURES INSTRUCTION BULLETIN 63230-020-59 A1 FOR ADDITIONAL DETAILS, PERTAINING TO THE METER ENCLOSURE INSTALLATION.
- ALL ENCLOSURES PROVIDED BY SCHNEIDER ELECTRIC THAT WILL HOUSE REMOTE RADIOS PROVIDED BY THE WIRELESS CONTRACTOR WILL BE EQUIPPED WITH INTEGRATED LIGHTNING ARRESTORS INSTALLED. 24VDC CONTROL POWER WILL BE MADE AVAILABLE FOR POWERING.
- ALL WIRELESS NETWORK ENCLOSURES AND ITS ASSOCIATED CONTENTS, COAX CABLES/HARDWARE, ETHERNET JACKS, ANTENNAS, AND ALL OTHER MISCELLANEOUS HARDWARE NEEDED TO COMPLETE THE INSTALLATION OF THE WIRELESS SYSTEM IS THE RESPONSIBILITY OF THE WIRELESS CONTRACTOR AS DIRECTED BY SCHNEIDER ELECTRIC.
- ALL OUTDOOR COAX TERMINATIONS SHALL BE MADE WITH A SELF HEALING WEATHERPROOF TAPE SUCH AS 3M SCOTCH 2228 OR EQUAL.
- COAX CABLE MUST BE GROUNDED TO A PERMANENT SYSTEM GROUND.

© SCHNEIDER ELECTRIC USA, INC.
THIS DRAWING AND/OR SPECIFICATIONS CONTAINS INFORMATION PROPRIETARY TO SCHNEIDER ELECTRIC, IT IS SUBMITTED IN CONFIDENCE AND IS TO BE USED SOLELY FOR THE PURPOSE FOR WHICH IT IS FURNISHED. SCHNEIDER ELECTRIC OWNS ALL COPYRIGHT, DESIGN AND INVENTION RIGHTS FOR THE DATA AND/OR MATERIAL DISCLOSED HEREIN. ALL DRAWINGS AND WRITTEN MATERIAL APPEARING HEREIN MAY NOT BE REPRODUCED, TRANSMITTED, DISCLOSED OR USED OTHERWISE IN WHOLE OR IN PART WITHOUT WRITTEN AUTHORIZATION OF SCHNEIDER ELECTRIC.

SCHNEIDER ELECTRIC USA, INC.

CHECKED BY: ALAN WATSON

CHECKED DATE: FEBRUARY 25, 2011

PLANT LOCATION: P48 (ENG SVCS - PROJECTS)

JOB NAME: VA ALEXANDRIA CAMPUS

JOB LOCATION: ALEXANDRIA, LOUISIANA

DRAWN BY: DONALD FREITAS

ENGR: MIKE ANDERSON

DATE: FEBRUARY 25, 2011

DRAWING STATUS: AS-BUILT

EQUIPMENT DESIGNATION: BUILDINGS 16

EQUIPMENT TYPE: VISN 16

DRAWING TYPE: ALEXANDRIA VA NETWORK DIAGRAM

Schneider
Electric

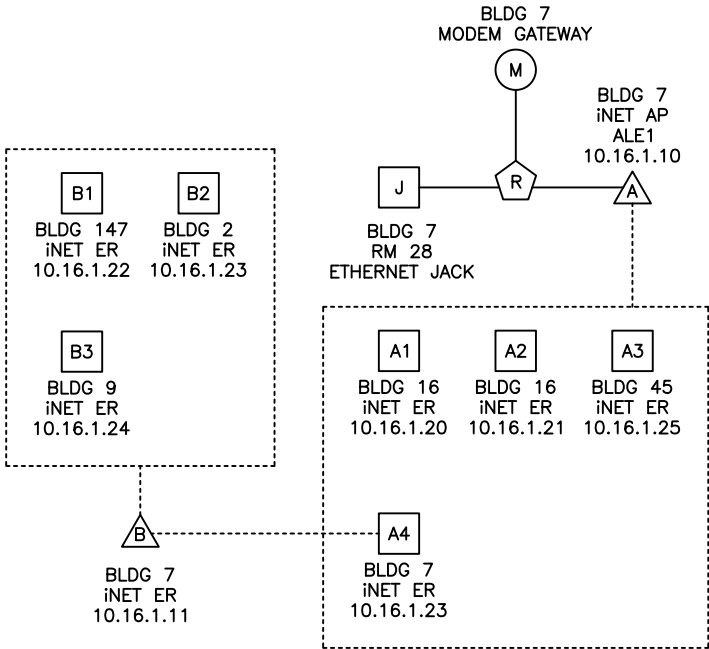
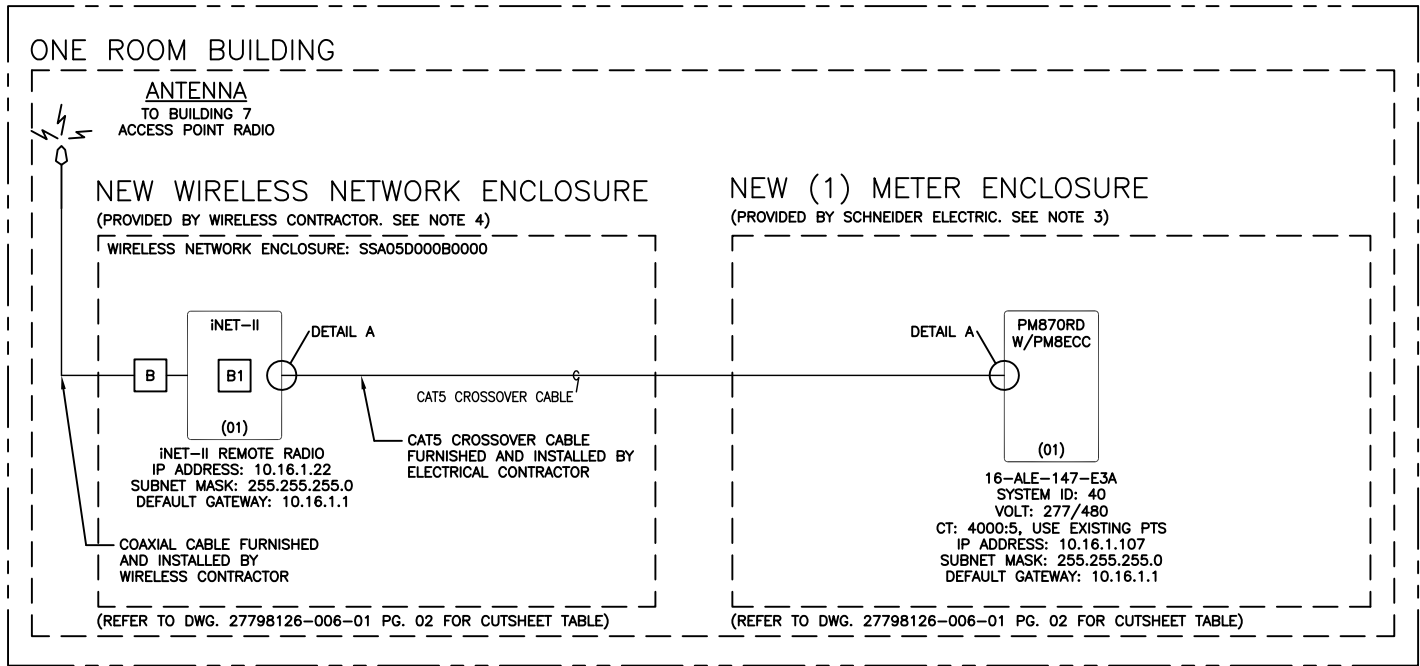
DWG# 27798126-006-01

PG 12 OF 17

REV -

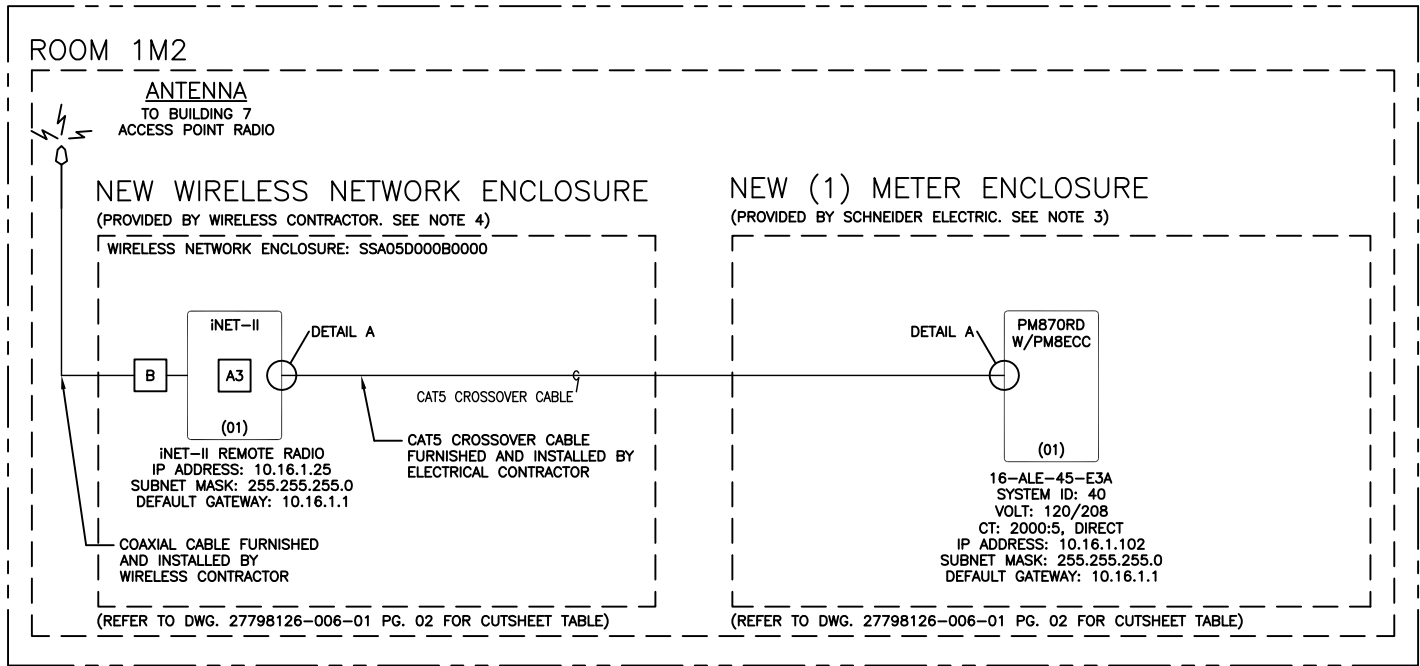
REV	DESCRIPTION	BY	DATE										
---	----	---	---/---/---	---	----	---	---	---/---/---	---	----	---	---	---/---/---

BUILDING 147



WIRELESS NETWORK DIAGRAM
VA ALEXANDRIA CAMPUS

BUILDING 45



NETWORK DIAGRAM
VA ALEXANDRIA CAMPUS

WIRELESS LEGEND

(M)	MODEM	(J)	ETHERNET JACK/DROP
(R)	ROUTER	(A)	RADIO ACCESS FPOINT
(E)	ETHERNET SWITCH	(A1)	RADIO REMOTE
(X)	ETHERNET EXTENDER	(B)	BULKHEAD LIGHTNING ARRESTER

NOTES:

- ELECTRICAL EQUIPMENT SHALL BE INSTALLED, OPERATED, SERVICED, AND MAINTAINED ONLY BY QUALIFIED PERSONNEL.
- ALL DETAILS LISTED HEREIN ARE FOR GENERAL REFERENCE ONLY AND SHALL BE USED ACCORDINGLY. EQUIPMENT SHALL BE INSTALLED IN ACCORDANCE WITH ALL LOCAL AND NEC CODES. REFER TO PROVIDED SQUARE D POWERLOGIC FACTORY ASSEMBLED ENCLOSURES INSTRUCTION BULLETIN 63230-020-59 A1 FOR ADDITIONAL DETAILS, PERTAINING TO THE METER ENCLOSURE INSTALLATION.
- ALL ENCLOSURES PROVIDED BY SCHNEIDER ELECTRIC THAT WILL HOUSE REMOTE RADIOS PROVIDED BY THE WIRELESS CONTRACTOR WILL BE EQUIPPED WITH INTEGRATED LIGHTNING ARRESTORS INSTALLED. 24VDC CONTROL POWER WILL BE MADE AVAILABLE FOR POWERING.
- ALL WIRELESS NETWORK ENCLOSURES AND ITS ASSOCIATED CONTENTS, COAX CABLES/HARDWARE, ETHERNET JACKS, ANTENNAS, AND ALL OTHER MISCELLANEOUS HARDWARE NEEDED TO COMPLETE THE INSTALLATION OF THE WIRELESS SYSTEM IS THE RESPONSIBILITY OF THE WIRELESS CONTRACTOR AS DIRECTED BY SCHNEIDER ELECTRIC.
- ALL OUTDOOR COAX TERMINATIONS SHALL BE MADE WITH A SELF HEALING WEATHERPROOF TAPE SUCH AS 3M SCOTCH 2228 OR EQUAL.
- COAX CABLE MUST BE GROUNDED TO A PERMANENT SYSTEM GROUND.

© SCHNEIDER ELECTRIC USA, INC.
THIS DRAWING AND/OR SPECIFICATIONS CONTAINS INFORMATION PROPRIETARY TO SCHNEIDER ELECTRIC, IT IS SUBMITTED IN CONFIDENCE AND IS TO BE USED SOLELY FOR THE PURPOSE FOR WHICH IT IS FURNISHED. SCHNEIDER ELECTRIC OWNS ALL COPYRIGHT, DESIGN AND INVENTION RIGHTS FOR THE DATA AND/OR MATERIAL DISCLOSED HEREIN. ALL DRAWINGS AND WRITTEN MATERIAL APPEARING HEREIN MAY NOT BE REPRODUCED, TRANSMITTED, DISCLOSED OR USED OTHERWISE IN WHOLE OR IN PART WITHOUT WRITTEN AUTHORIZATION OF SCHNEIDER ELECTRIC.

SCHNEIDER ELECTRIC USA, INC.

CHECKED BY: ALAN WATSON

CHECKED DATE: FEBRUARY 25, 2011

PLANT LOCATION: P48 (ENG SVCS – PROJECTS)

JOB NAME: VA ALEXANDRIA CAMPUS

JOB LOCATION: ALEXANDRIA, LOUISIANA

DRAWN BY: DONALD FREITAS

ENGR: MIKE ANDERSON

DATE: FEBRUARY 25, 2011

DRAWING STATUS: AS-BUILT

EQUIPMENT DESIGNATION: BUILDINGS 45 & 147

EQUIPMENT TYPE: VISN 16

DRAWING TYPE: ALEXANDRIA VA NETWORK DIAGRAM

Schneider
Electric

DWG# 27798126-006-01

PG 13 OF 17

REV –

REV	DESCRIPTION	BY	DATE	-	----	--	--/---/---	-	----	--	--/---/---
-	----	--	--/---/---	-	----	--	--/---/---	-	----	--	--/---/---

PIN 8 — BRN —

PIN 7 — WHT/BRN —

PIN 6 — ORG —

PIN 5 — WHT/BLU —

PIN 4 — BLU —

PIN 3 — WHT/ORG —

PIN 2 — GRN —

PIN 1 — WHT/GRN —

RECEIVE (3&6)

TRANSMIT (1&2)

WHT/ORG — PIN 1

ORG — PIN 2

WHT/GRN — PIN 3

BLU — PIN 4

WHT/BLU — PIN 5

GRN — PIN 6

WHT/BRN — PIN 7

BRN — PIN 8

TRANSMIT (1&2)

RECEIVE (3&6)

PIN 1

PIN 2

PIN 3

PIN 4

PIN 5

PIN 6

PIN 7

PIN 8

DETAIL A

CAT5 CROSSOVER CABLE WIRING

3090MCTAS-485

NETWORK TERMINATOR

BELDEN 8723 CABLE FROM PREVIOUS DEVICE

SHIELD

BLACK

RED

WHITE

GREEN

24

23

22

21

20

SHD

TX-

TX+

RX-

RX+

DETAIL C

BELDEN 8723 CABLE TERMINATION AT PM870RD (TYPICAL)

Rx

Tx

Tx-

Tx+

Rx-

Rx+

+

-

1

2

3

4

5

6

7

8

4-WIRE CONNECTION

Rx

Tx

Tx-

Tx+

Rx-

Rx+

+

-

1

2

3

4

5

6

7

8

TERM.

BIAS

JUMPER (2-WIRE)

UP/ON

DOWN/OFF

DETAIL D

PM800 SERIES DIP SWITCH SETTINGS FOR RS485 BIASING AND TERMINATION

- ABC - ## - E#A,B,C...

VISN #

SITE NAME

BLDG #

METERS IN ENCLOSURE

INSTALL TYPE:

ENCLOSURE E1 = RETROFIT

ENCLOSURE E3 = WALL MOUNT

DETAIL E

TYPICAL METER NAMING CONVENTION

GREEN

WHITE

RED

BLACK

SHIELD

6

5

4

3

2

1

TX+

TX-

RX+

RX-

SG

SHD

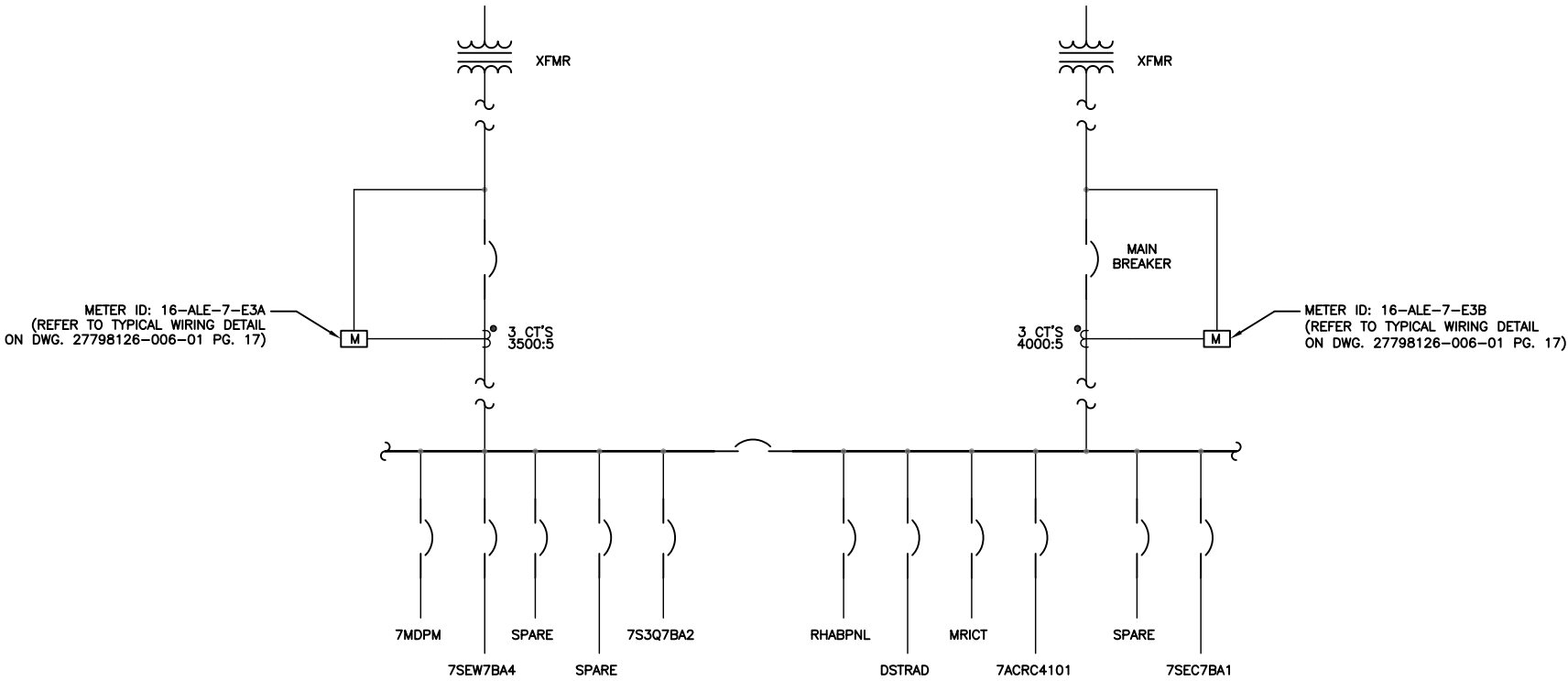
BELDEN 8723 CABLE

DETAIL F

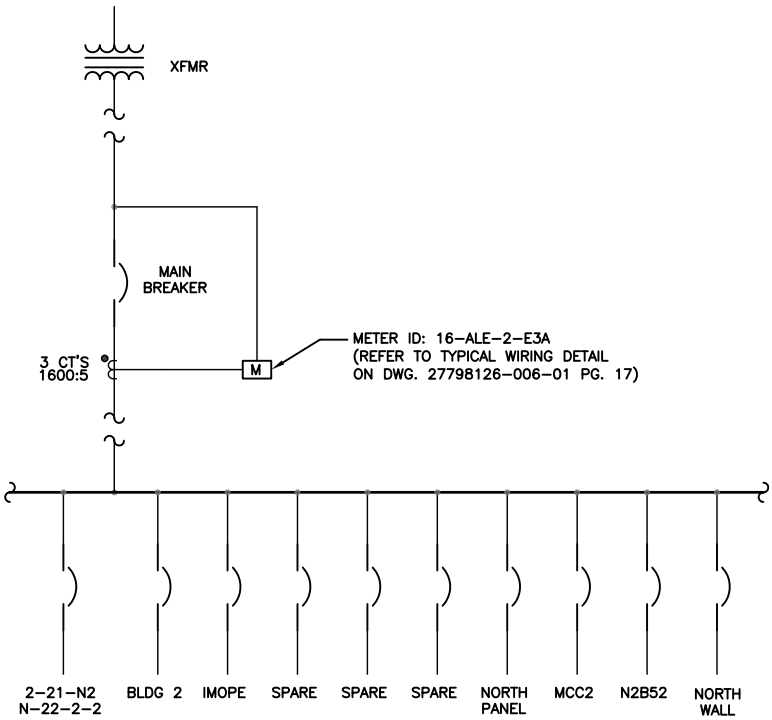
BELDEN 8723 CABLE CONNECTION AT PM8ECC CARD (TYPICAL)

© SCHNEIDER ELECTRIC USA, INC. THIS DRAWING AND/OR SPECIFICATIONS CONTAINS INFORMATION PROPRIETARY TO SCHNEIDER ELECTRIC, IT IS SUBMITTED IN CONFIDENCE AND IS TO BE USED SOLELY FOR THE PURPOSE FOR WHICH IT IS FURNISHED. SCHNEIDER ELECTRIC OWNS ALL COPYRIGHT, DESIGN AND INVENTION RIGHTS FOR THE DATA AND/OR MATERIAL DISCLOSED HEREIN. ALL DRAWINGS AND WRITTEN MATERIAL APPEARING HEREIN MAY NOT BE REPRODUCED, TRANSMITTED, DISCLOSED OR USED OTHERWISE IN WHOLE OR IN PART WITHOUT WRITTEN AUTHORIZATION OF SCHNEIDER ELECTRIC.	SCHNEIDER ELECTRIC USA, INC.		JOB NAME:	VA ALEXANDRIA CAMPUS	EQUIPMENT DESIGNATION:	-	
			JOB LOCATION:	ALEXANDRIA, LOUISIANA	EQUIPMENT TYPE:	VISN 16	
	CHECKED BY:	ALAN WATSON	DRAWN BY:	DONALD FREITAS	DRAWING TYPE:	ALEXANDRIA VA NETWORK DETAILS	
	CHECKED DATE:	FEBRUARY 25, 2011	ENGR:	MIKE ANDERSON	<div>Schneider Electric</div>		
	PLANT LOCATION:	P48 (ENG SVCS – PROJECTS)	DATE:	FEBRUARY 25, 2011			
		DRAWING STATUS:	AS-BUILT	DWG#	27798126-006-01	PG 14 OF 17	REV -

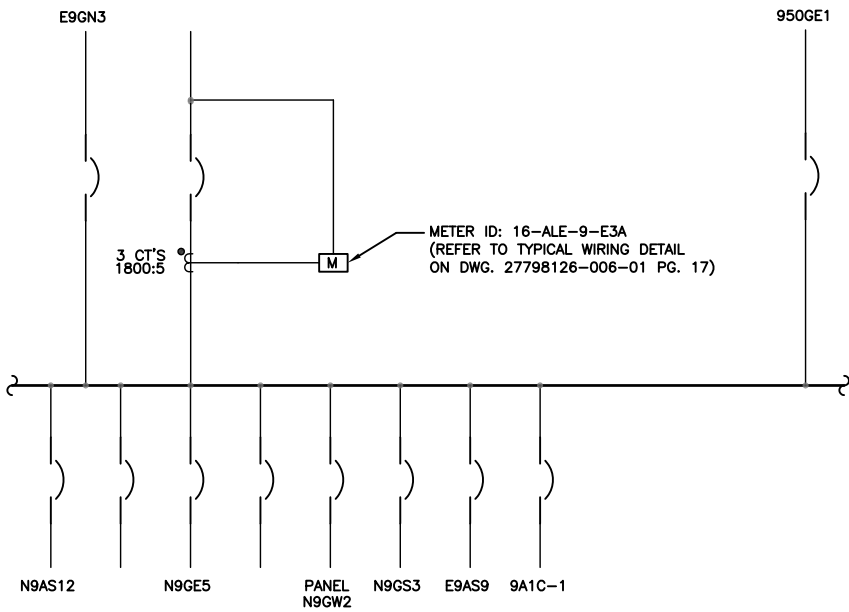
REV	DESCRIPTION	BY	DATE	-	----	--	--/--/--	-	----	--	--/--/--
-	----	--	--/--/--	-	----	--	--/--/--	-	----	--	--/--/--



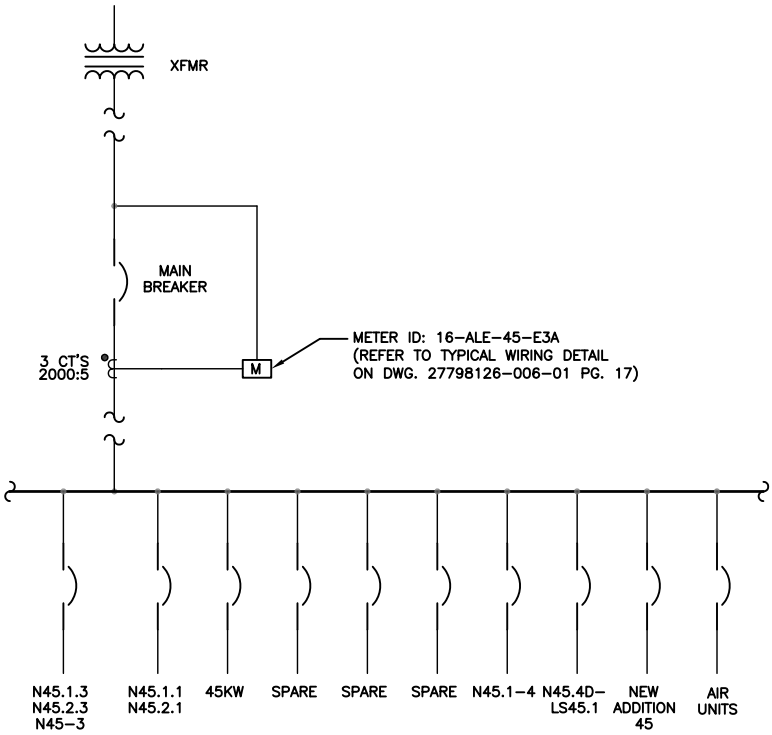
BUILDING 7, ROOM 28 PARTIAL ONE-LINE
VA ALEXANDRIA CAMPUS



BUILDING 2, STORAGE ROOM PARTIAL ONE-LINE
VA ALEXANDRIA CAMPUS



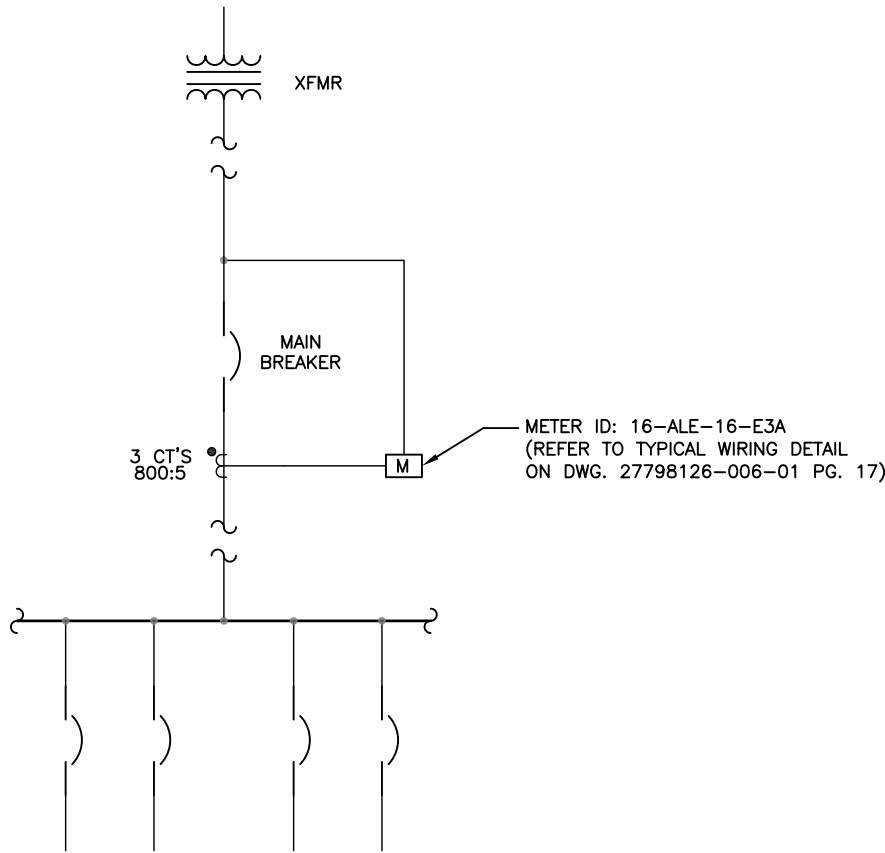
BUILDING 9, ROOM 115D PARTIAL ONE-LINE
VA ALEXANDRIA CAMPUS



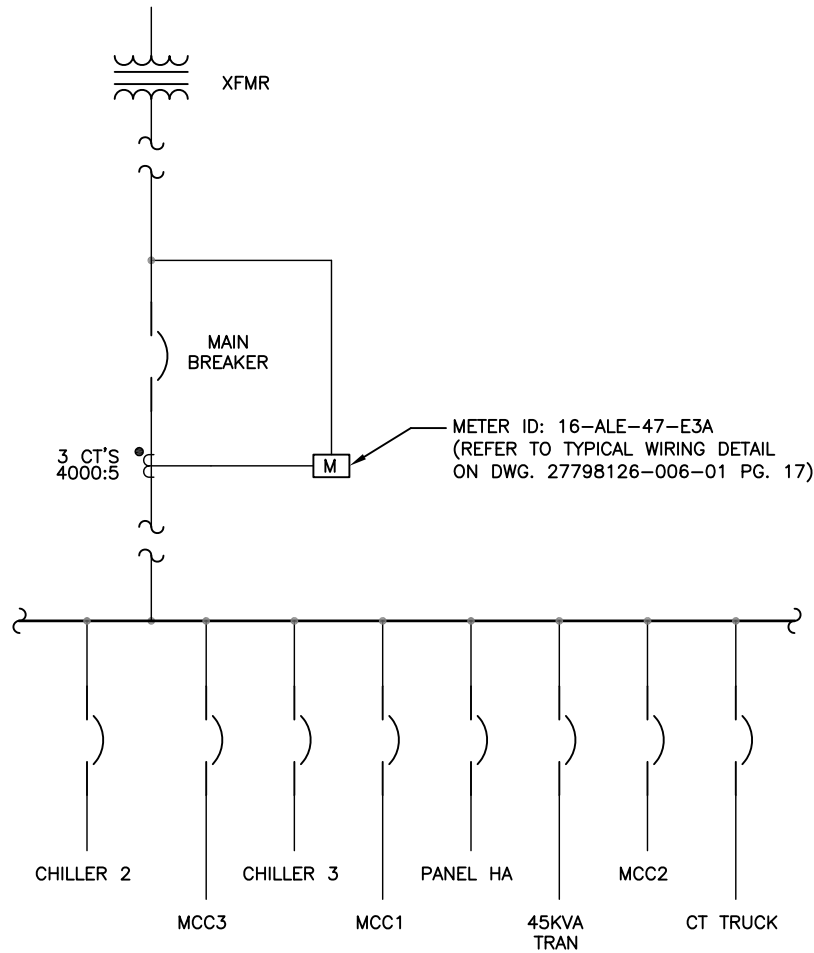
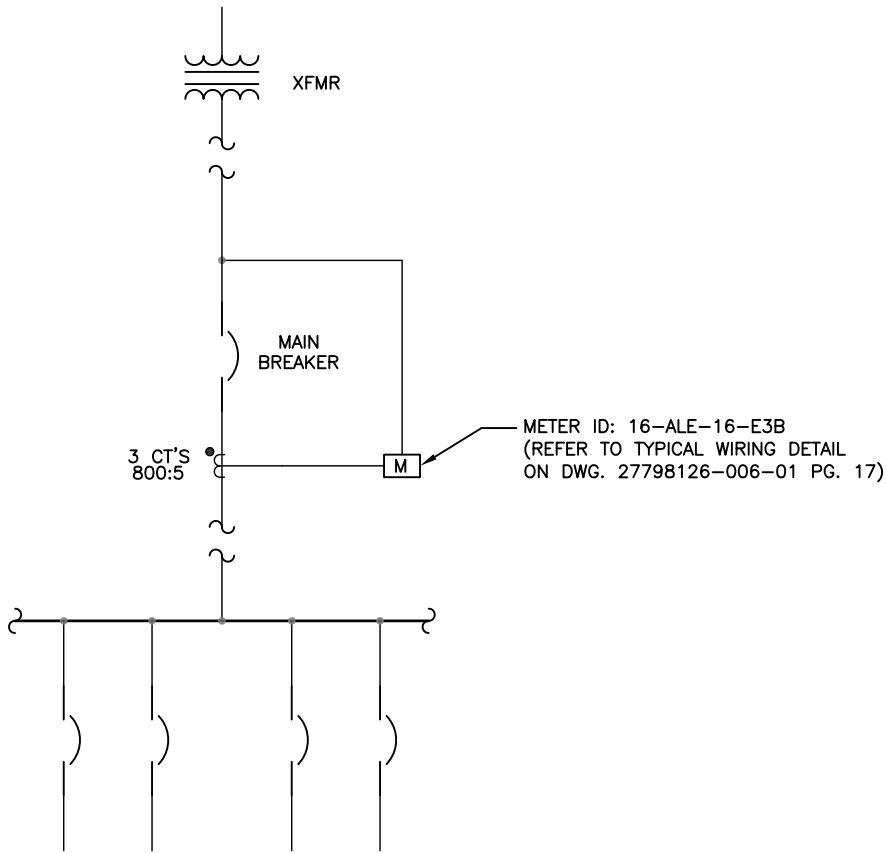
BUILDING 45, ROOM 1M2 PARTIAL ONE-LINE
VA ALEXANDRIA CAMPUS

© SCHNEIDER ELECTRIC USA, INC. THIS DRAWING AND/OR SPECIFICATIONS CONTAINS INFORMATION PROPRIETARY TO SCHNEIDER ELECTRIC, IT IS SUBMITTED IN CONFIDENCE AND IS TO BE USED SOLELY FOR THE PURPOSE FOR WHICH IT IS FURNISHED. SCHNEIDER ELECTRIC OWNS ALL COPYRIGHT, DESIGN AND INVENTION RIGHTS FOR THE DATA AND/OR MATERIAL DISCLOSED HEREIN. ALL DRAWINGS AND WRITTEN MATERIAL APPEARING HEREIN MAY NOT BE REPRODUCED, TRANSMITTED, DISCLOSED OR USED OTHERWISE IN WHOLE OR IN PART WITHOUT WRITTEN AUTHORIZATION OF SCHNEIDER ELECTRIC.	SCHNEIDER ELECTRIC USA, INC.		JOB NAME:	VA ALEXANDRIA CAMPUS	EQUIPMENT DESIGNATION:	-
			JOB LOCATION:	ALEXANDRIA, LOUISIANA	EQUIPMENT TYPE:	VISN 16
	CHECKED BY: ALAN WATSON		DRAWN BY:	DONALD FREITAS	DRAWING TYPE: ALEXANDRIA VA PARTIAL ONE-LINE	
	CHECKED DATE: FEBRUARY 25, 2011		ENGR:	MIKE ANDERSON		
	PLANT LOCATION: P48 (ENG SVCS - PROJECTS)		DATE:	FEBRUARY 25, 2011	DWG# 27798126-006-01	
			DRAWING STATUS:	AS-BUILT		
					PG 15	OF 17
					REV	-

REV	DESCRIPTION	BY	DATE	-	----	--	--/--/--	-	----	--	--/--/--
-	----	--	--/--/--	-	----	--	--/--/--	-	----	--	--/--/--



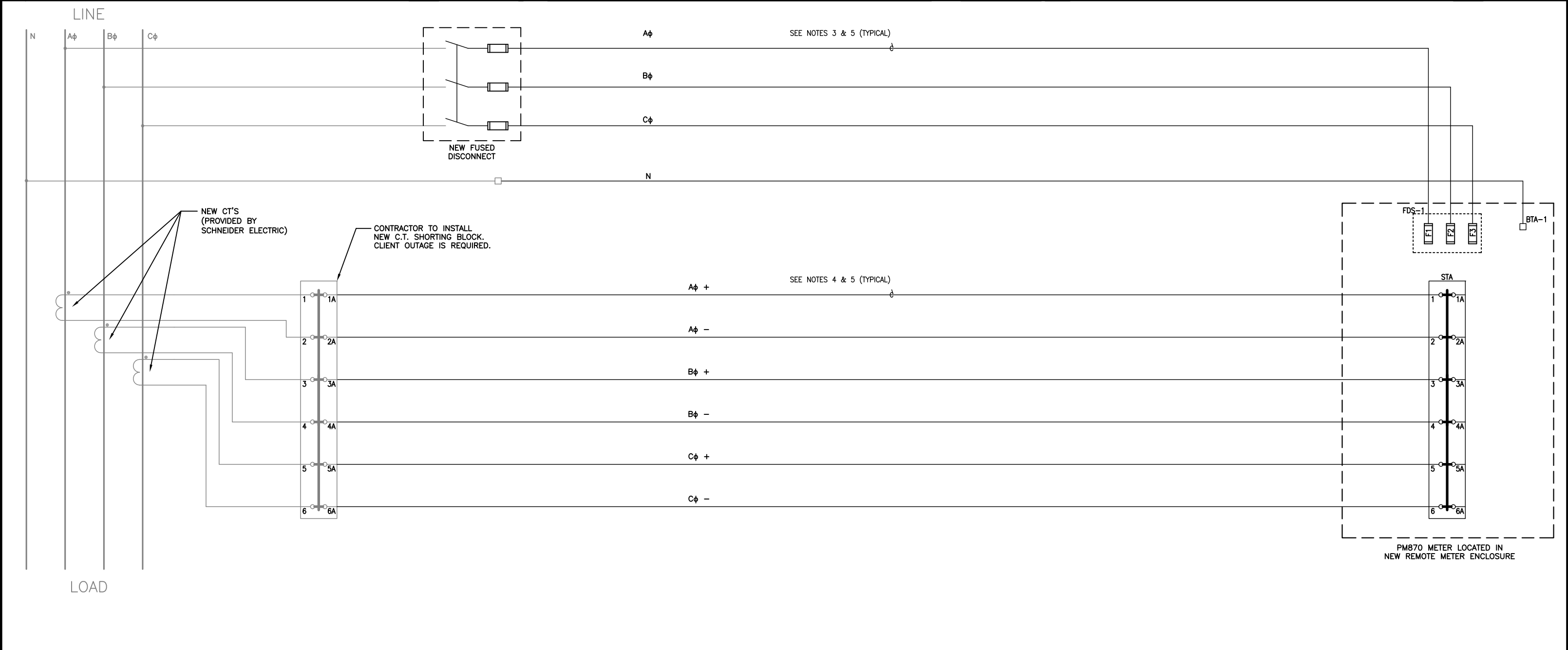
BUILDING 16, OUTSIDE PARTIAL ONE-LINE
VA ALEXANDRIA CAMPUS



BUILDING 45, ROOM 1M2 PARTIAL ONE-LINE
VA ALEXANDRIA CAMPUS

© SCHNEIDER ELECTRIC USA, INC. THIS DRAWING AND/OR SPECIFICATIONS CONTAINS INFORMATION PROPRIETARY TO SCHNEIDER ELECTRIC, IT IS SUBMITTED IN CONFIDENCE AND IS TO BE USED SOLELY FOR THE PURPOSE FOR WHICH IT IS FURNISHED. SCHNEIDER ELECTRIC OWNS ALL COPYRIGHT, DESIGN AND INVENTION RIGHTS FOR THE DATA AND/OR MATERIAL DISCLOSED HEREIN. ALL DRAWINGS AND WRITTEN MATERIAL APPEARING HEREIN MAY NOT BE REPRODUCED, TRANSMITTED, DISCLOSED OR USED OTHERWISE IN WHOLE OR IN PART WITHOUT WRITTEN AUTHORIZATION OF SCHNEIDER ELECTRIC.	SCHNEIDER ELECTRIC USA, INC.	JOB NAME:	VA ALEXANDRIA CAMPUS	EQUIPMENT DESIGNATION:	-
		JOB LOCATION:	ALEXANDRIA, LOUISIANA	EQUIPMENT TYPE:	VISN 16
		DRAWN BY:	DONALD FREITAS	DRAWING TYPE:	ALEXANDRIA VA PARTIAL ONE-LINE
	CHECKED BY:	ALAN WATSON	ENGR:	MIKE ANDERSON	
	CHECKED DATE:	FEBRUARY 25, 2011	DATE:	FEBRUARY 25, 2011	
	PLANT LOCATION:	P48 (ENG SVCS - PROJECTS)	DRAWING STATUS:	AS-BUILT	DWG# 27798126-006-01
				PG 16	OF 17
				REV	-

REV	DESCRIPTION	BY	DATE	-	----	--	--/--/--	-	----	--	--/--/--
-	----	--	--/--/--	-	----	--	--/--/--	-	----	--	--/--/--



NOTES:


- REFERENCE DRAWING PACKAGE: 9761E0870R2A1B1C1-SPL FOR DETAILS FOR METER ENCLOSURES: 16-ALE-7-E3A, 16-ALE-7-E3B.
- REFERENCE DRAWING PACKAGE: 9761E0870R1A1B1C-SPL FOR DETAILS FOR METER ENCLOSURES: 16-ALE-45-E3A, 16-ALE-2-E3A, 16-ALE-9-E3A.
- REFERENCE DRAWING PACKAGE: 9761E0870Y1C3B1C-SPL FOR DETAILS FOR METER ENCLOSURES: 16-ALE-16-E3A.
- REFERENCE DRAWING PACKAGE: 9761E0870Y1A1B1C-SPL FOR DETAILS FOR METER ENCLOSURES: 16-ALE-16-E3B.
- REFERENCE DRAWING PACKAGE: 9761E0870R1C3B1C-SPL3 FOR DETAILS FOR METER ENCLOSURES: 16-ALE-147-E3A.

NEW ELECTRICAL METER INSTALLATION

TYPICAL FOR METERS: 16-ALE-7-E3A, 16-ALE-7-E3B, 16-ALE-9-E3A, 16-ALE-2-E3A, 16-ALE-45-E3A, 16-ALE-16-E3A, 16-ALE-16-E3B, 16-ALE-147-E3A

NOTES:

- ELECTRICAL EQUIPMENT SHALL BE INSTALLED, OPERATED, SERVICED, AND MAINTAINED ONLY BY QUALIFIED PERSONNEL.
- ALL DETAILS LISTED HEREIN ARE FOR GENERAL REFERENCE ONLY AND SHALL BE USED ACCORDINGLY. EQUIPMENT SHALL BE INSTALLED IN ACCORDANCE WITH ALL LOCAL AND NEC CODES. REFER TO PROVIDED SQUARE D POWERLOGIC FACTORY ASSEMBLED ENCLOSURES INSTRUCTION BULLETIN 63230-020-59 A1 FOR ADDITIONAL DETAILS.
- ALL VOLTAGE CIRCUITS SHALL MEET OR EXCEED THE FOLLOWING SPECIFICATION. 14AWG STRANDED COPPER 90° C 600 VOLT MTW OR EQUIVALENT.
- ALL CURRENT CIRCUITS SHALL MEET OR EXCEED THE FOLLOWING SPECIFICATION. 12AWG STRANDED COPPER 90° C 600 VOLT MTW OR EQUIVALENT.
- TO INSURE MAXIMUM ACCURACY MONITORING EQUIPMENT SHALL BE INSTALLED AS CLOSE TO THE SOURCE AS POSSIBLE. VOLTAGE AND CURRENT CIRCUITS SHALL NOT EXCEED ONE HUNDRED FEET IN DISTANCE.

© SCHNEIDER ELECTRIC USA, INC. THIS DRAWING AND/OR SPECIFICATIONS CONTAINS INFORMATION PROPRIETARY TO SCHNEIDER ELECTRIC, IT IS SUBMITTED IN CONFIDENCE AND IS TO BE USED SOLELY FOR THE PURPOSE FOR WHICH IT IS FURNISHED. SCHNEIDER ELECTRIC OWNS ALL COPYRIGHT, DESIGN AND INVENTION RIGHTS FOR THE DATA AND/OR MATERIAL DISCLOSED HEREIN. ALL DRAWINGS AND WRITTEN MATERIAL APPEARING HEREIN MAY NOT BE REPRODUCED, TRANSMITTED, DISCLOSED OR USED OTHERWISE IN WHOLE OR IN PART WITHOUT WRITTEN AUTHORIZATION OF SCHNEIDER ELECTRIC.	SCHNEIDER ELECTRIC USA, INC.		JOB NAME:	VA ALEXANDRIA CAMPUS	EQUIPMENT DESIGNATION:	TYPICAL NEW METER ENCLOSURE (SYSTEM ID 40)			
			JOB LOCATION:	ALEXANDRIA, LOUISIANA	EQUIPMENT TYPE:	VISN 16			
			DRAWN BY:	DONALD FREITAS	DRAWING TYPE:	ALEXANDRIA VA WIRING SCHEMATIC			
	CHECKED BY:	ALAN WATSON	ENGR:	MIKE ANDERSON					
	CHECKED DATE:	FEBRUARY 25, 2011	DATE:	FEBRUARY 25, 2011					
	PLANT LOCATION:	P48 (ENG SVCS – PROJECTS)		DRAWING STATUS:	AS–BUILT	DWG#	27798126–006–01	PG 17	OF 17