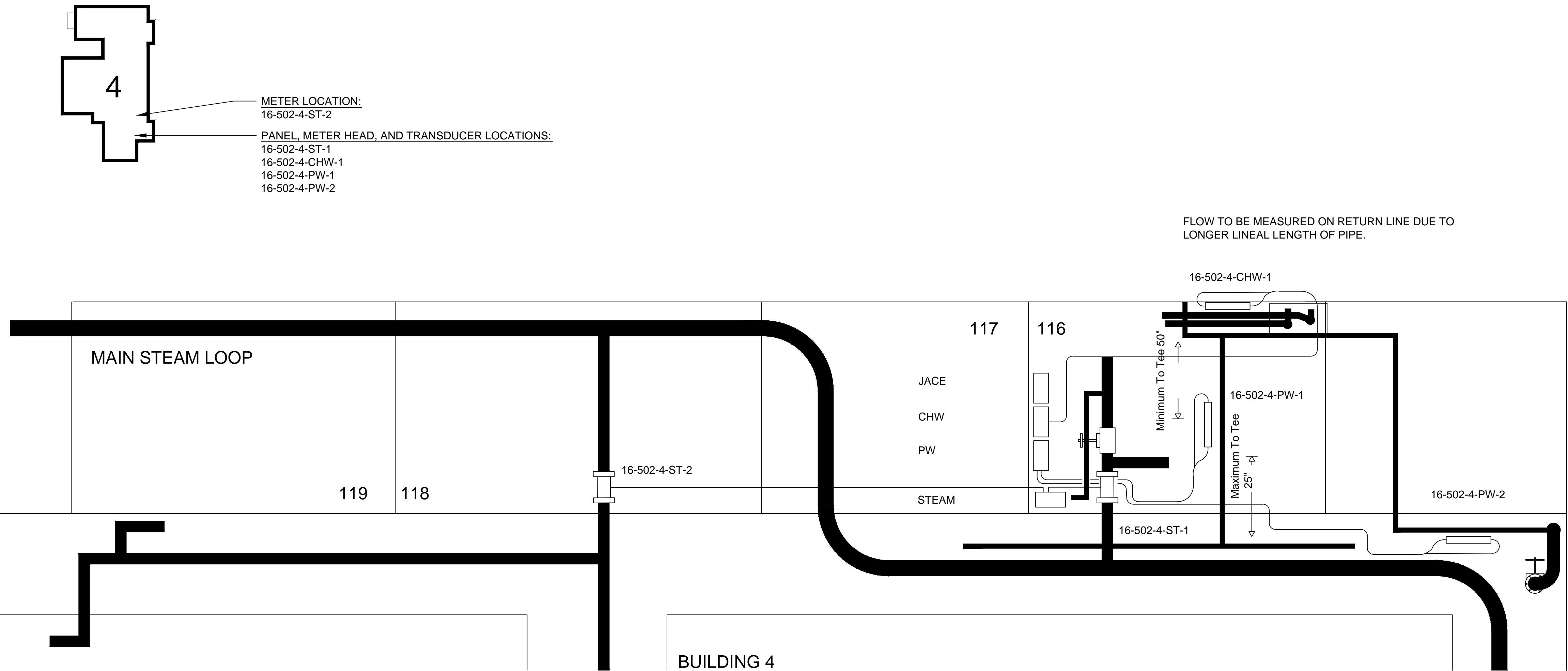


VHA ALEXANDRIA, LOUISIANA  
BUILDING #4 METER PLACEMENT DIAGRAMS



- 16-502-4-ST-1

Accelabar Steam Meter
- 16-502-4-ST-2

Accelabar Steam Meter
- Veris Eng

AFS150C-2.5-05-H-R-H2-RM-C2GC
- Veris Eng

AFS150C-3-05-H-R-H2-RM-C2GC
- Dual Channel Flow meter head with two Accelabar flow units
- 16-502-4-CHW-1

Transit Time Ultrasonic Flow Meter
- SIEMENS (1)

FUE1010-7ME3500-1AA10-0DA1-Z-K01-R01-R01-Y17
- Single Channel Flow meter head BTU/Flow with one set of flow transducers and two temperature RTD sensors with up to 900' of transducer cable per transducer sets. (cables in pairs)
- 16-502-4-PW-1

Transit Time Ultrasonic Flow Meter
- 16-502-4-PW-2

Transit Time Ultrasonic Flow Meter
- SIEMENS (1)

FUS1010-7ME3530-2AA10-0DD1-Z-K01-K01-Y17
- Dual Channel Flow meter head Flow Only with two sets of flow transducers with up to 900' of transducer cable per transducer sets. (cables in pairs)
- RADIO LINK

MDS 900mHz ETHERNET/INTERNET RADIO LINK  
MODBus interlink functionality
- SIEMENS 588-702

Jace Controller

DUAL SOURCE FED DOMESTIC WATER SYSTEM TIED TOGETHER TO BACK-FEED THE DOMESTIC WATER LOOP. WATER METER TO MONITOR BRANCH FEED.



BLDG. 4 METER HEADS AND PANEL  
INSTALLED



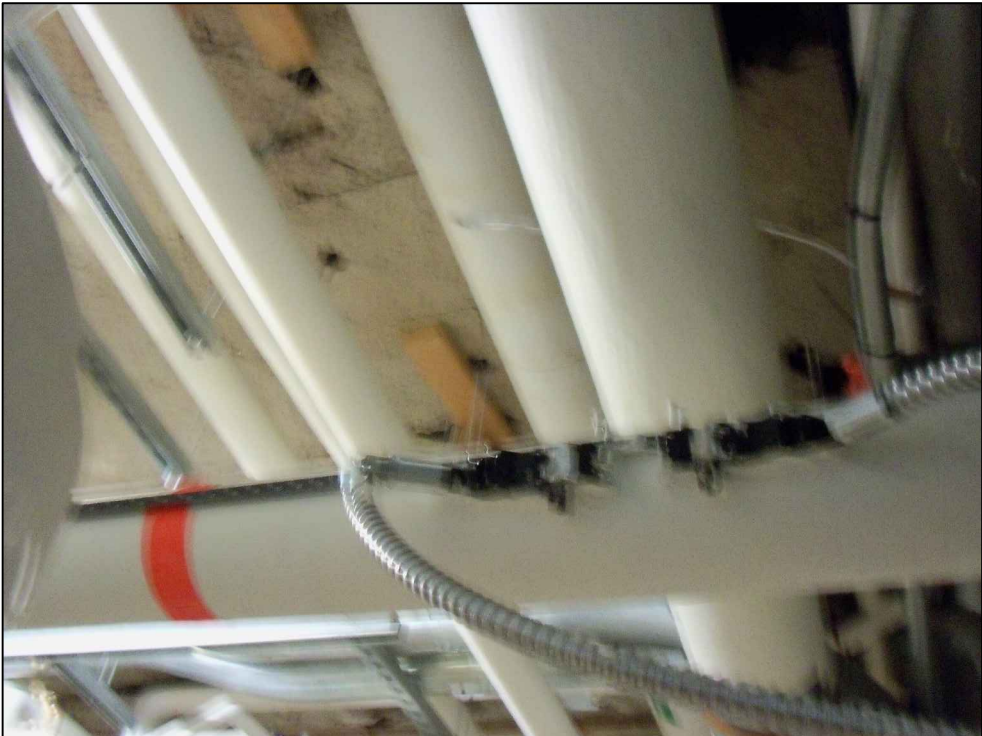
16-502-4-ST-1 INSTALLED



16-502-4-ST-2 INSTALLED



16-502-4-CHW-1 INSTALLED

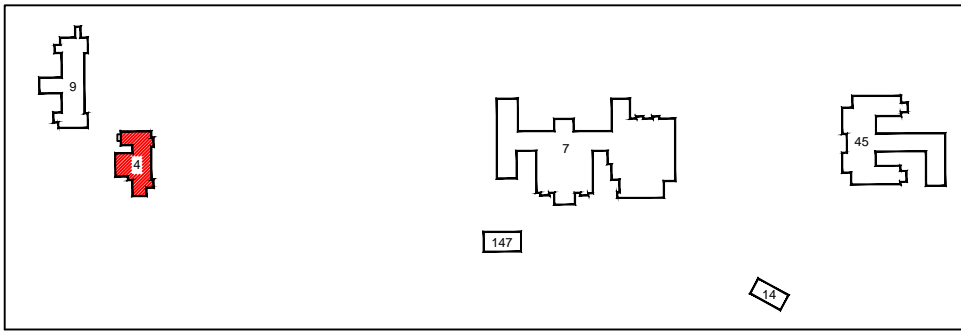


16-502-4-PW-1 INSTALLED



16-502-4-PW-2 INSTALLED

Reference Drawing	NO	Revision	ECN	Date	By



VHA ALEXANDRIA, LA  
AS-BUILT DRAWINGS

Office Information:  
TL Services, Inc.  
4733 Kibler Rd.  
Van Buren, AR 72956  
PH: 501-474-7222  
FAX: 501-471-7964



Drawing Title	METER PLACEMENT DIAGRAMS BUILDING 4
Approved Project Director	

Project Title	ADVANCED UTILITY METERING VAMC VISN 16
Location	VAMC ALEXANDRIA, LOUISIANNA
Date	16 MAY 2012
Checked	
Drawn	KAS

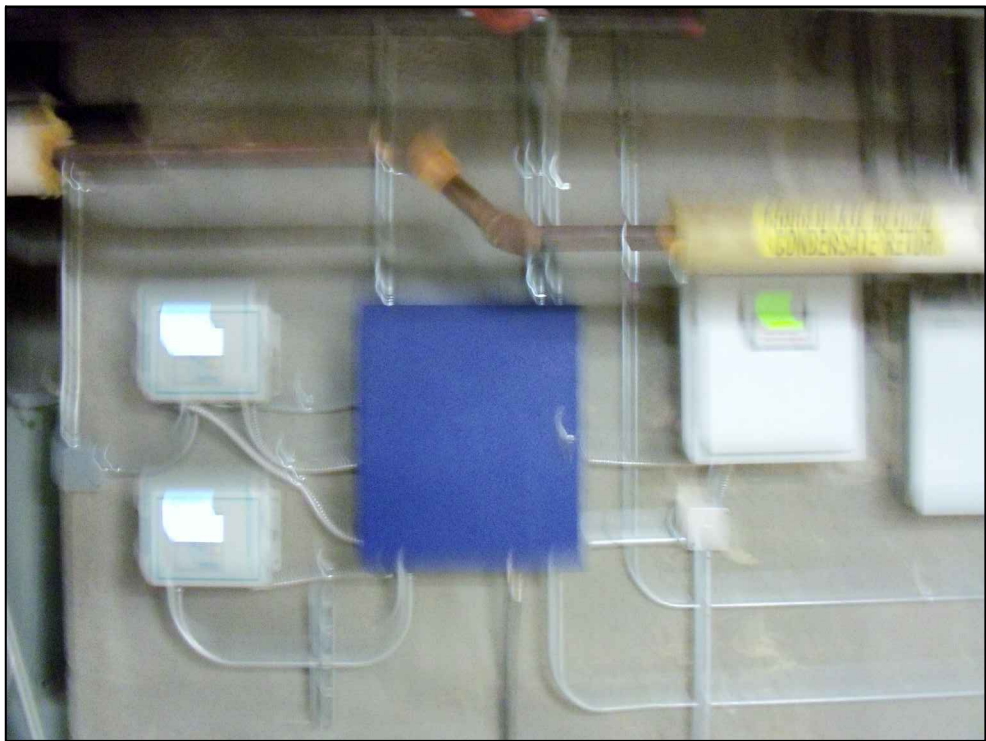
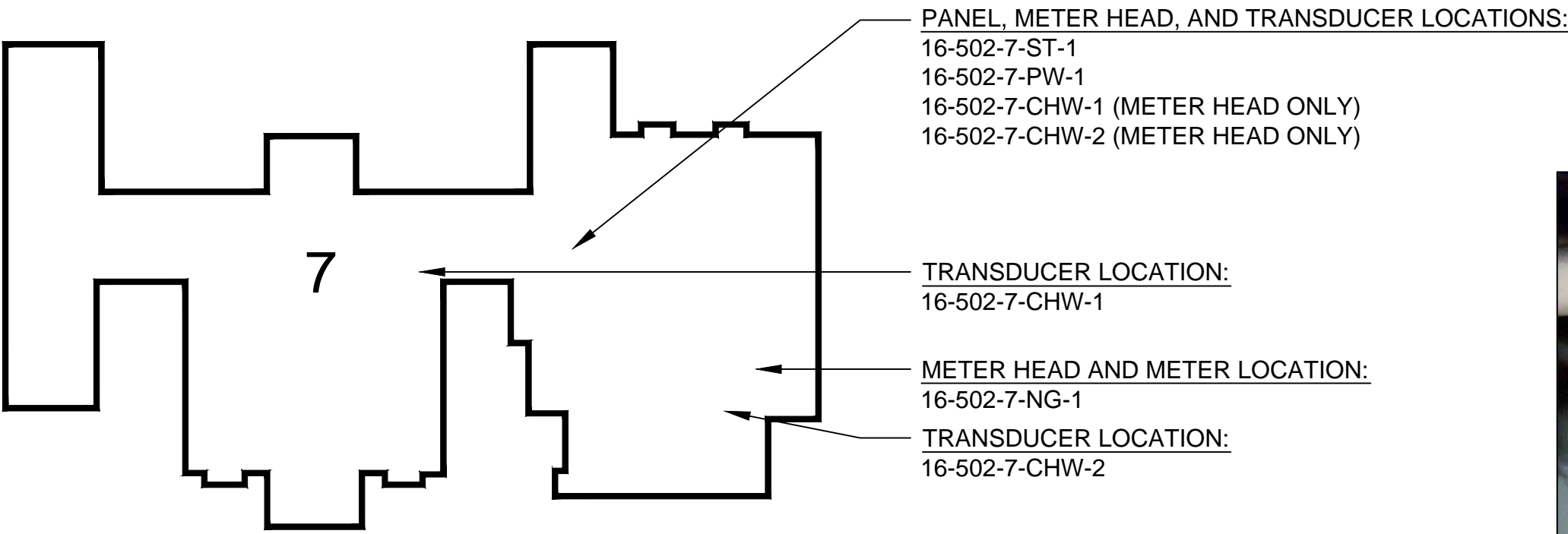
Project Number	101-09-066
Site Number	16-502
Drawing Number	M-UM-1
Dwg. 1 of 13	

Office of  
Facilities  
Management





VHA ALEXANDRIA, LOUISIANA  
BUILDING #7 METER PLACEMENT DIAGRAMS



BLDG. 7 METER HEADS AND PANEL  
INSTALLED



16-502-7-ST-1 INSTALLED

16-502-7-ST-1      Accelabar Steam Meter  
Veris Eng      AFS150C-6-10-H-R-H2-RM-C2GC  
Single Channel Flow meter head with one Accellabar flow unit

16-502-7-NG-1      FT-2      Mass Flow Meter, Natural Gas

16-502-7-CHW-1      Transit Time Ultrasonic Flow Meter  
16-502-7-CHW-2      Transit Time Ultrasonic Flow Meter

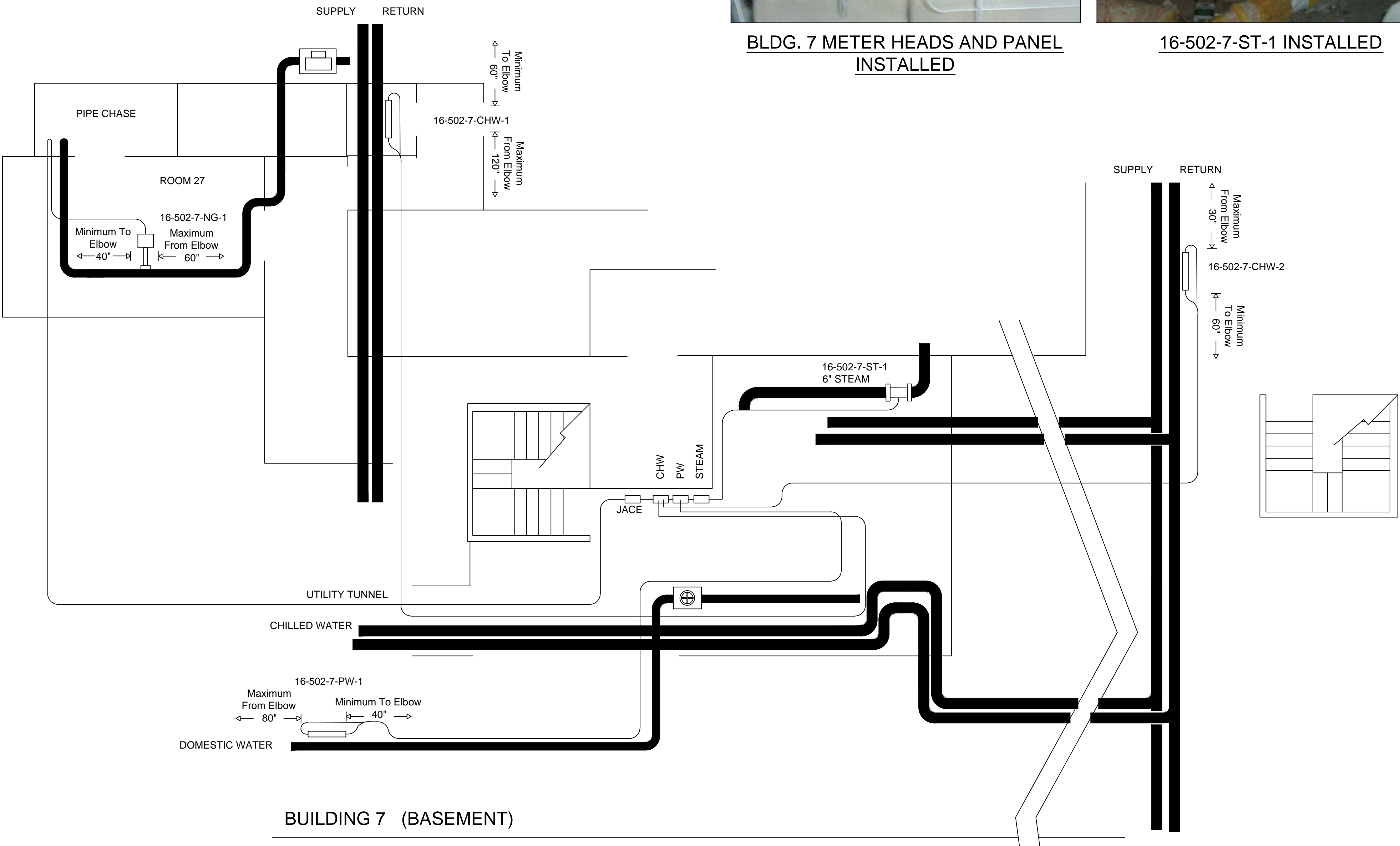
SIEMENS (1) FUE1010-7ME3500-2AA10-0DD1-Z-K01-R01-R01-K01-R01-Y17  
Dual Channel Flow meter head BTU/Flow with two sets of flow transducers and  
four temperature RTD sensors with up to 900' of transducer cable per  
transducer sets. (cables in pairs)

NOTE: CHILLED WATER TRANSDUCERS MOUNTED TO RETURN FEED  
LINE.

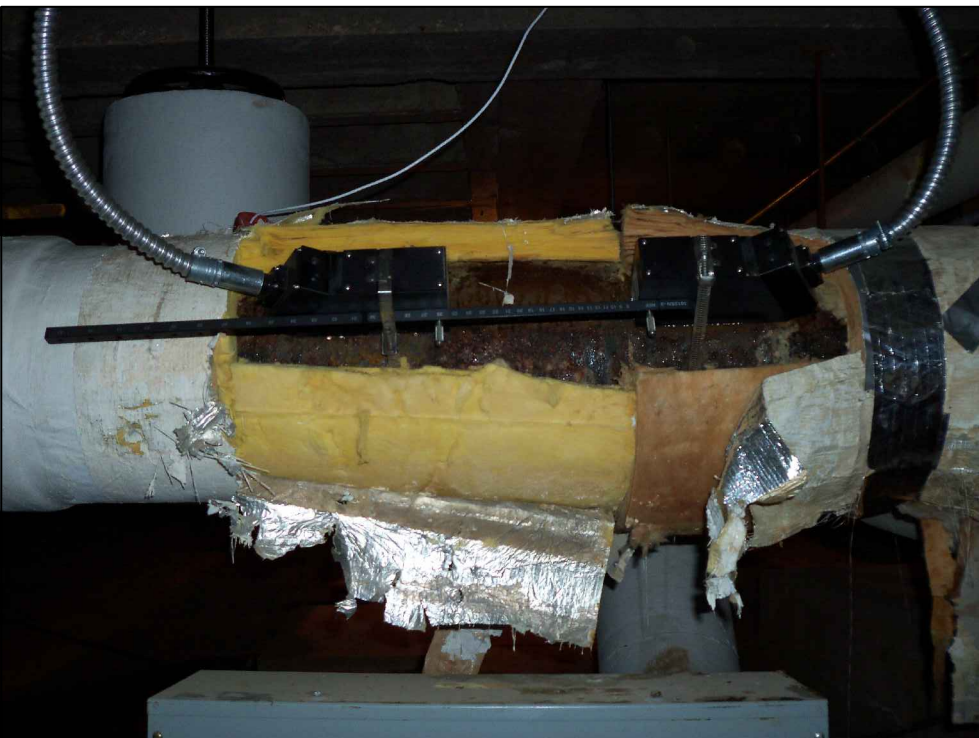
16-502-7-PW-1      Transit Time Ultrasonic Flow Meter  
SIEMENS (1) FUS1010-7ME3530-1AA10-0DD1-Z-K01-Y17  
Single Channel Flow meter head Flow Only with one set of flow transducers  
with up to 900' of transducer cable per transducer sets. (cables in pairs)

RADIO LINK      MDS 900mHz ETHERNET/INTERNET RADIO LINK  
MODBus interlink functionality

SIEMENS 588-706      Jace Controller



16-502-7-CHW-1 INSTALLED



16-502-7-CHW-2 INSTALLED

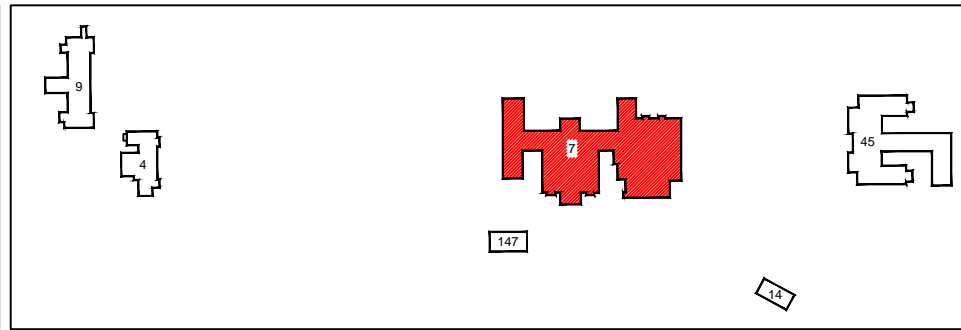


16-502-7-PW-1 INSTALLED



16-502-7-NG-1 INSTALLED

Reference Drawing	NO	Revision	ECN	Date	By



VHA ALEXANDRIA, LA  
AS-BUILT DRAWINGS

Office Information:  
TL Services, Inc.  
4733 Kibler Rd.  
Van Buren, AR 72956  
PH: 501-474-7222  
FAX: 501-471-7964



Drawing Title	METER PLACEMENT DIAGRAMS BUILDING 7
Approved Project Director	

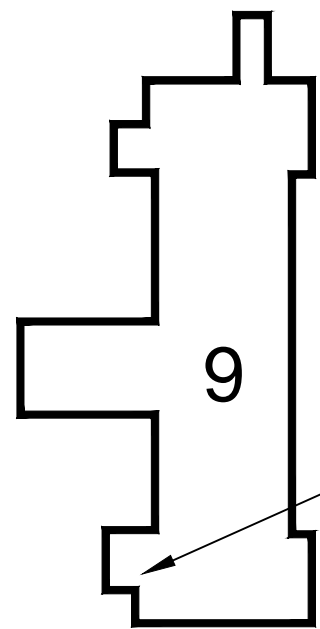
Project Title	ADVANCED UTILITY METERING VAMC VISN 16
Location	VAMC ALEXANDRIA, LOUISIANNA
Date	16 MAY 2012
Checked	
Drawn	KAS

Project Number	101-09-066
Site Number	16-502
Drawing Number	M-UM-3
Dwg. 3 of 13	



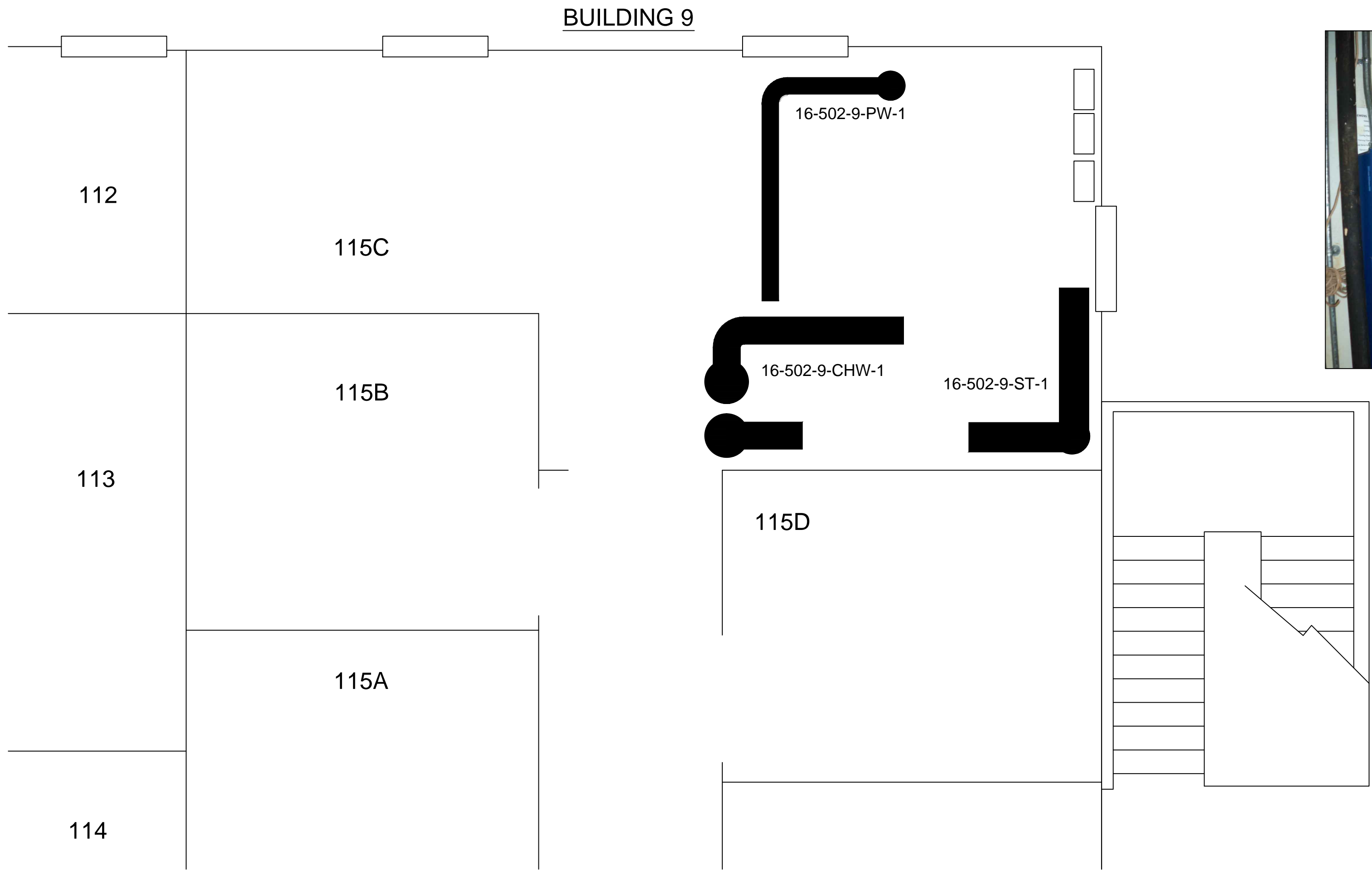


VHA ALEXANDRIA, LOUISIANA  
BUILDING #9 METER PLACEMENT DIAGRAMS

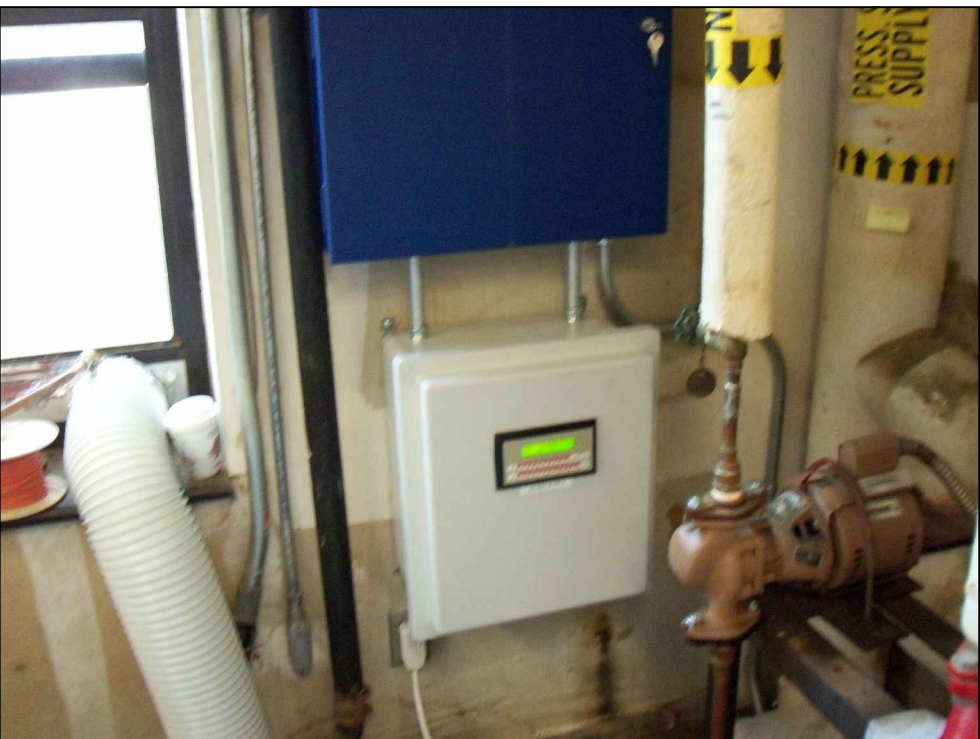


PANEL, METER HEADS, AND TRANSDUCER LOCATIONS:  
16-502-9-ST-1  
16-502-9-CHW-1  
16-502-9-PW-1

16-502-9-ST-1      Accelabar Steam Meter  
Veris Eng      AFS150C-3-05-H-R-H2-RM-C2GC  
Single Channel Flow meter head with one Accelabar flow unit  
  
16-502-9-CHW-1      Transit Time Ultrasonic Flow Meter  
16-502-9-PW-1      Transit Time Ultrasonic Flow Meter  
  
SIEMENS (1) FUE1010-7ME3500-2AA10-0DD1-Z-K01-K01-R01-R01-Y17  
Dual Channel Flow meter head BTU/Flow with two sets of flow transducers and  
two temperature RTD sensors with up to 900' of transducer cable per  
transducer sets. (cables in pairs)  
  
RADIO LINK      MDS 900mHz ETHERNET/INTERNET RADIO LINK  
MODBus interlink functionality  
  
SIEMENS 588-702 Jace Controller



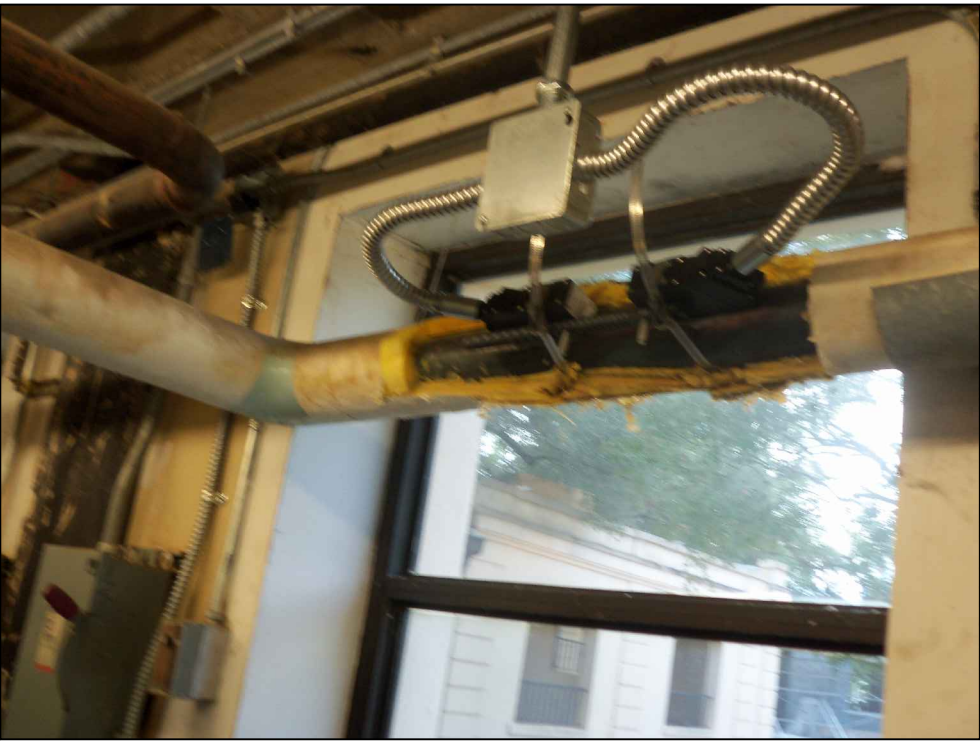
BLDG. 9 METER HEADS AND PANEL INSTALLED



16-502-9-ST-1 INSTALLED

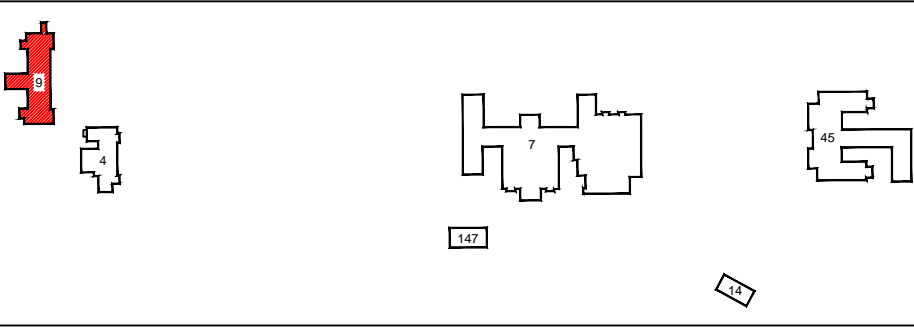


16-502-9-CHW-1 INSTALLED



16-502-9-PW-1 INSTALLED

Reference Drawing	NO	Revision	ECN	Date	By



VHA ALEXANDRIA, LA  
AS-BUILT DRAWINGS


Office Information:  
TL Services, Inc.  
4733 Kibler Rd.  
Van Buren, AR 72956  
PH: 501-474-7222  
FAX: 501-471-7964



**TL SERVICES**  
INCORPORATED  
A SERVICE DISABLED VETERAN OWNED SMALL BUSINESS

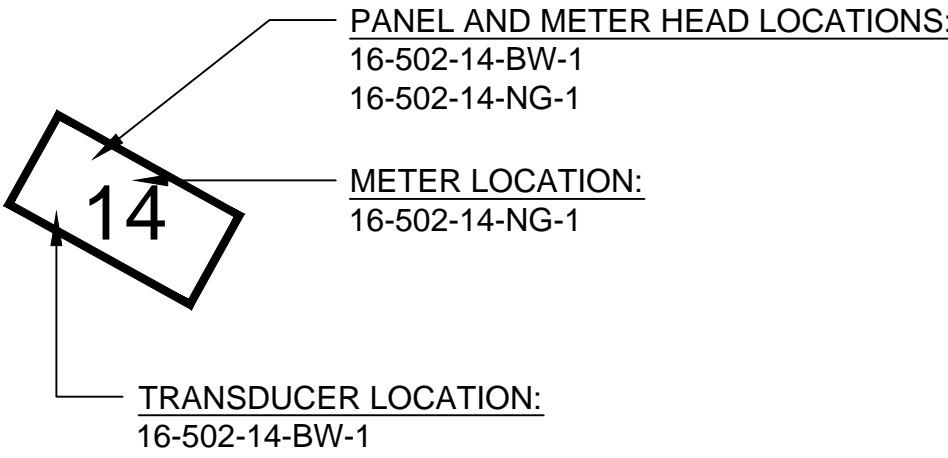
**TL SERVICES, INC**  
ENGINEERING GROUP



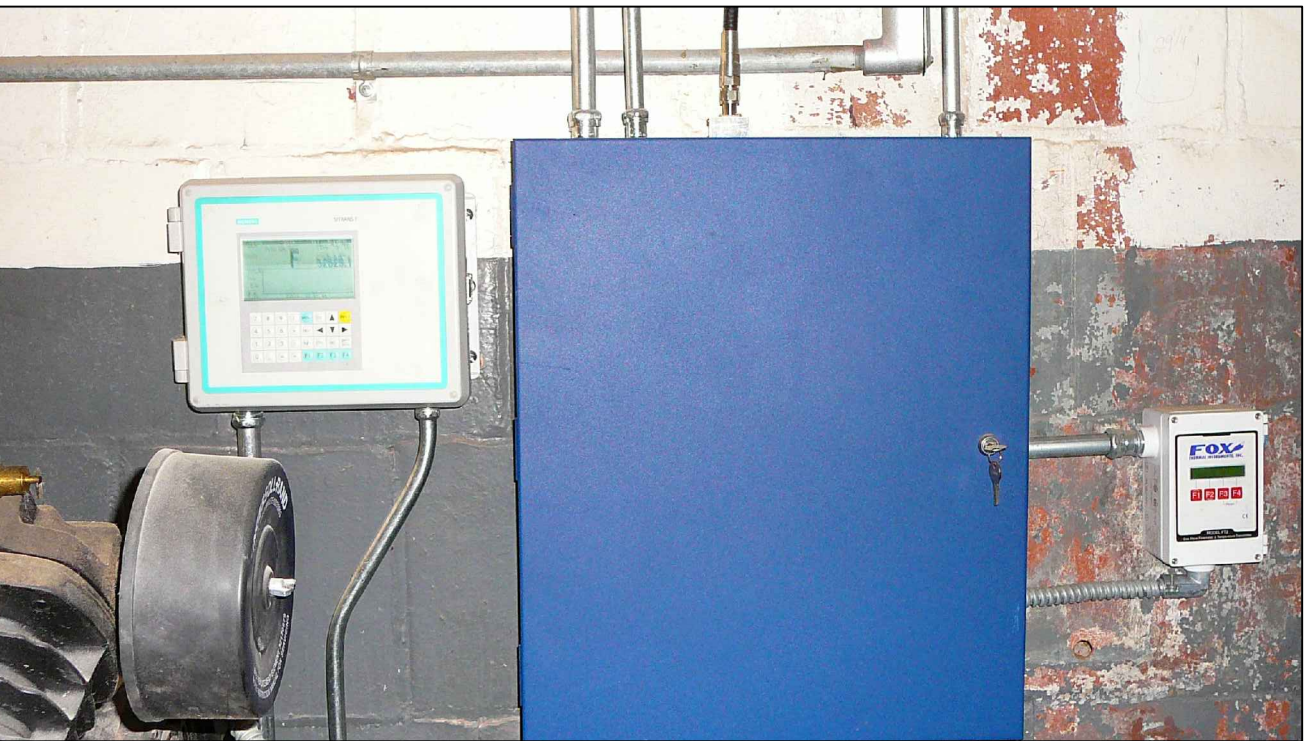
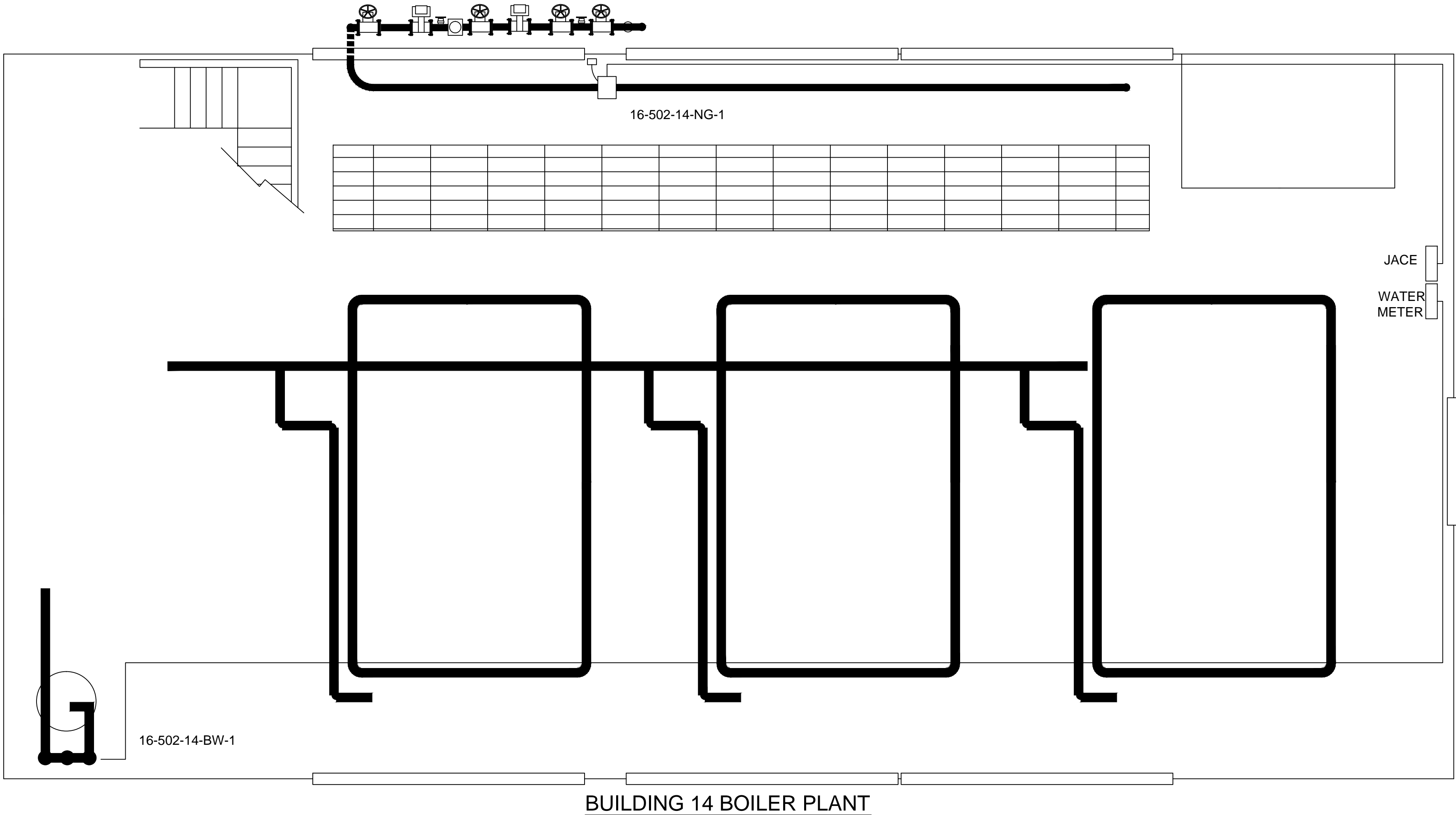
Drawing Title  METER PLACEMENT DIAGRAMS BUILDING 9	Project Title  ADVANCED UTILITY METERING VAMC VISN 16			Project Number 101-09-066		Office of Facilities Management
				Site Number 16-502		
Approved Project Director			Location VAMC ALEXANDRIA, LOUISIANA		Drawing Number M-UM-6 Dwg. 6 of 13	
			Date 16 MAY 2012	Checked  KAS		
						 Department of Veterans Affairs



VHA ALEXANDRIA, LOUISIANA  
BUILDING 14 (BOILER PLANT) METER PLACEMENT DIAGRAMS



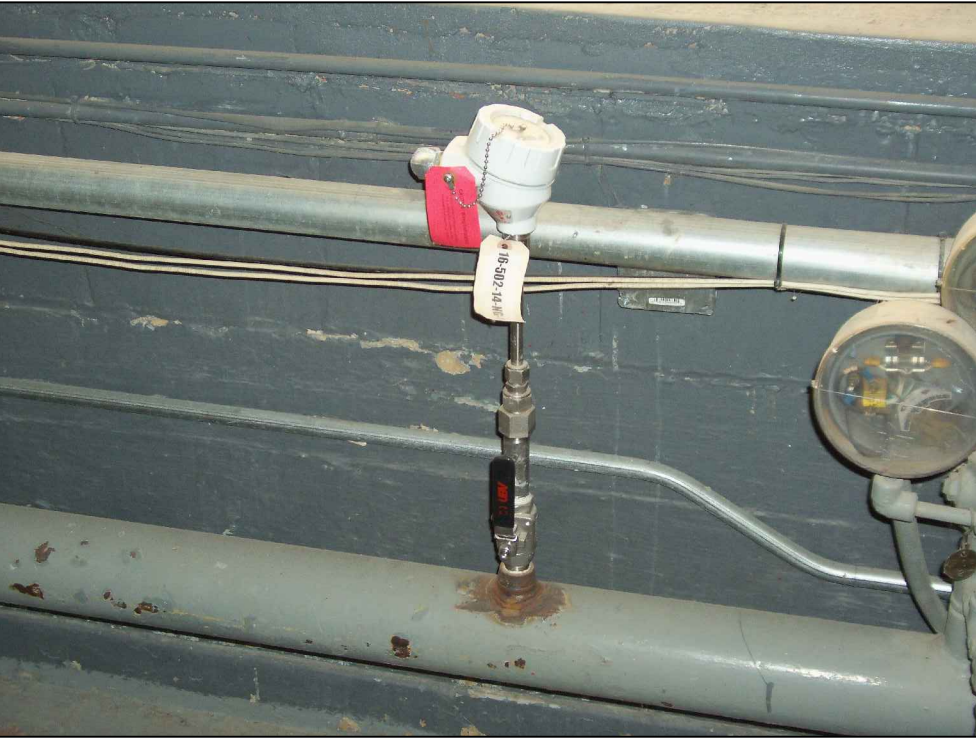
- 16-502-14-NG-1      FT-2    Fox Thermal    Mass Flow Meter
- 16-502-14-BW-1      Transit Time Ultrasonic Flow Meter
- SIEMENS   FUE1010-7ME3530-1AA10-0CA1-Z-K01-Y17
- Single Channel Flow meter head Flow ONLY with one set of flow transducers with up to 900' of transducer cable per transducer sets. (cables in pairs)
- RADIO LINK      MDS 900mHz ETHERNET/INTERNET RADIO LINK  
MODBus interlink functionality
- SIEMENS   588-702   (2) Jace Controller



BLDG. 14 METER HEADS AND PANEL INSTALLED

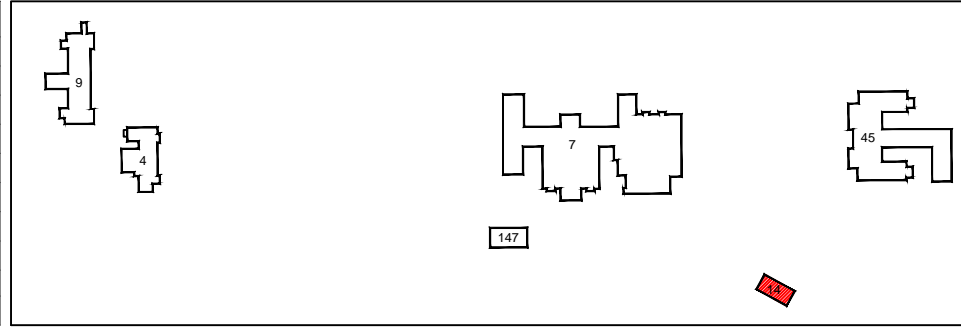


16-502-14-BW-1 INSTALLED



16-502-14-NG-1 INSTALLED

Reference Drawing	NO	Revision	ECN	Date	By




VHA ALEXANDRIA, LA  
AS-BUILT DRAWINGS

Office Information:  
TL Services, Inc.  
4733 Kibler Rd.  
Van Buren, AR 72956  
PH: 501-474-7222  
FAX: 501-471-7964

**TL SERVICES**  
INCORPORATED  
A SERVICE DISABLED VETERAN OWNED SMALL BUSINESS

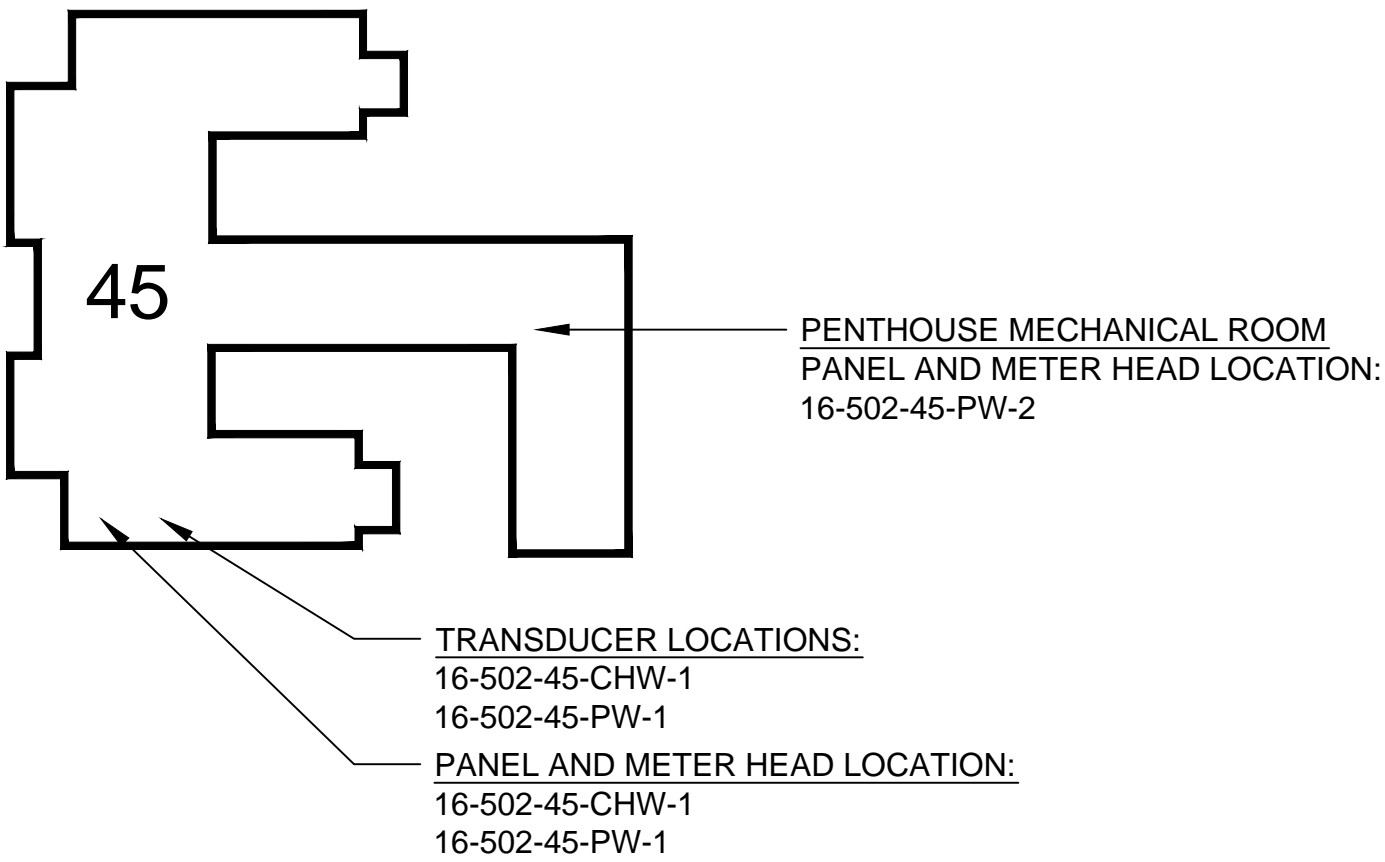
TL SERVICES, INC  
ENGINEERING GROUP

Drawing Title		Project Title			Project Number		Office of Facilities Management
METER PLACEMENT DIAGRAMS BUILDING 14 (BOILER PLANT)		ADVANCED UTILITY METERING VAMC VISN 16			101-09-066		
					Site Number		
					16-502		
Approved Project Director		Location			Drawing Number		
		VAMC ALEXANDRIA, LOUISIANNA			M-UM-8		
		Date	Checked	Drawn	Dwg. 8 of 13		
		16 MAY 2012		KAS			

Department of  
Veterans Affairs



ALEXANDRIA, VHA METER LOCATIONS  
BUILDING #45



BLDG. 45 CHW-1 AND PW-1 METER  
HEADS AND PANEL INSTALLED



BLDG. 45 PW-2 METER HEAD AND  
PANEL INSTALLED



BLDG. 45 ST-1 METER HEAD  
INSTALLED

16-502-45-ST-1      Accelabar Steam Meter  
Veris Eng      AFS150C-3-05-H-R-H2-RM-C2GC  
Single Channel Flow meter head with one Accelabar flow unit

16-502-45-CHW-1      Transit Time Ultrasonic Flow Meter  
16-502-45-PW-1      Transit Time Ultrasonic Flow Meter

SIEMENS (1) FUE1010-7ME3500-2AA10-0DD1-Z-K01-K01-R01-R01-Y17  
Dual Channel Flow meter head BTU/Flow with two sets of flow transducers and  
two temperature RTD sensors with up to 900' of transducer cable per  
transducer sets. (cables in pairs)

RADIO LINK      MDS 900MHz ETHERNET/INTERNET RADIO LINK  
MODBus interlink functionality

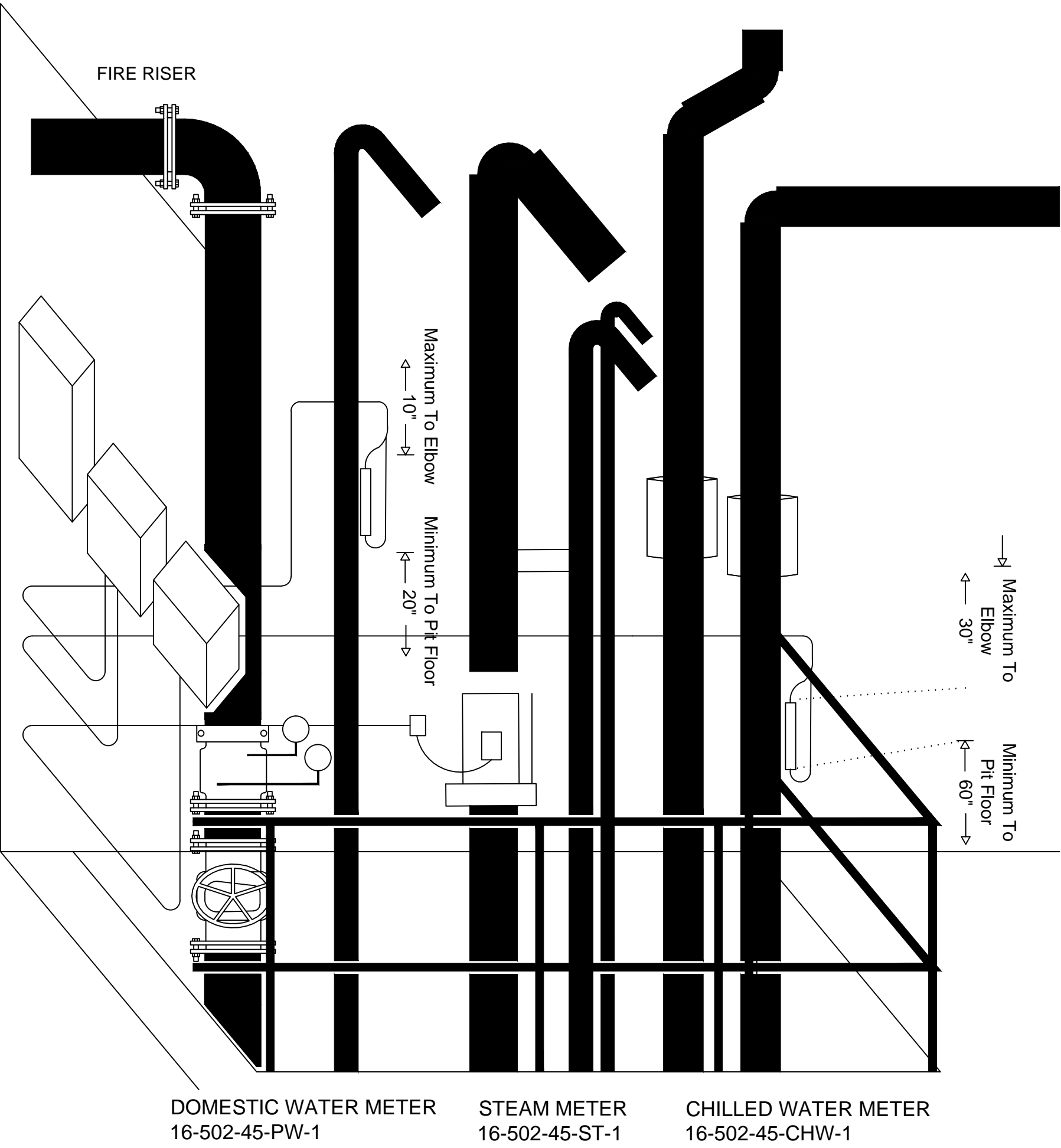
SIEMENS 588-702 Jace Controller

16-502-45-PW-2      Transit Time Ultrasonic Flow Meter  
SIEMENS (1) FUE1010-7ME3530-1AA10-0CA1-Z-K01-Y17  
Single Channel Flow meter head Flow ONLY with one set of flow transducers  
with up to 900' of transducer cable per transducer sets. (cables in pairs)

RADIO LINK      MDS 900MHz ETHERNET/INTERNET RADIO LINK  
MODBus interlink functionality

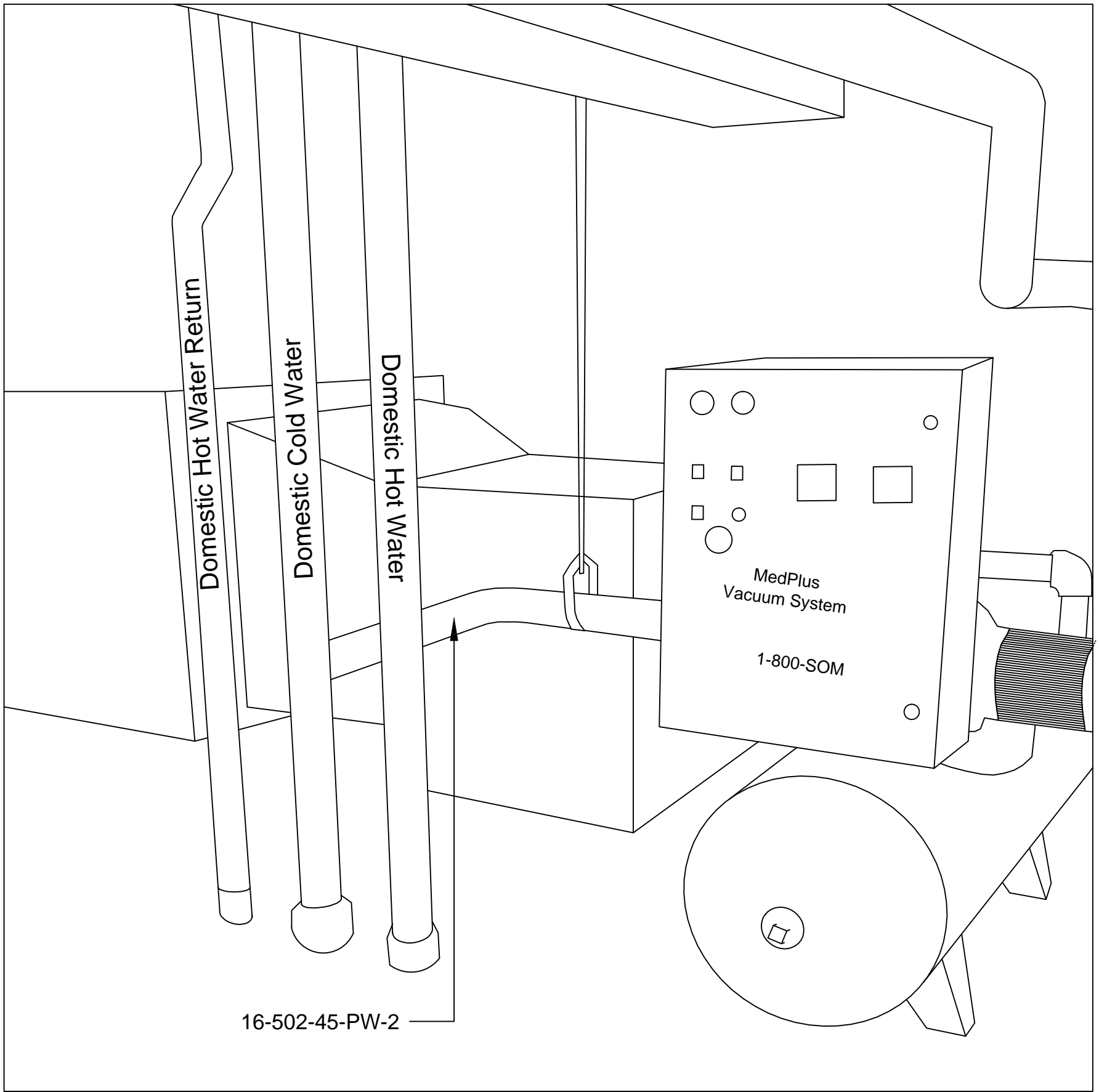
SIEMENS 588-702 Jace Controller



16-502-45-ST-1 INSTALLED

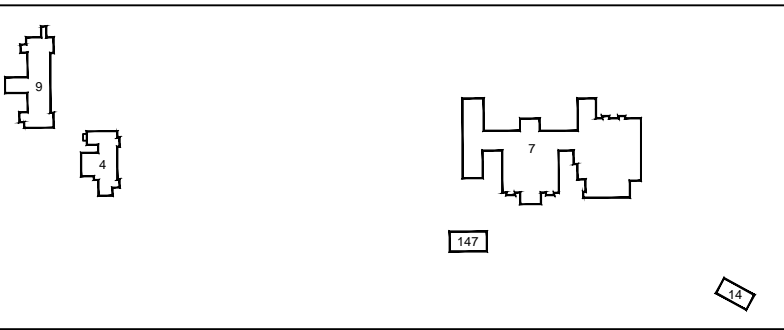
16-502-45-CHW-1 INSTALLED

16-502-45-PW-1 INSTALLED



16-502-45-PW-2 INSTALLED

Reference Drawing	NO	Revision	ECN	Date	By




VHA ALEXANDRIA, LA  
AS-BUILT DRAWINGS

Office Information:  
TL Services, Inc.  
4733 Kibler Rd.  
Van Buren, AR 72956  
PH: 501-474-7222  
FAX: 501-471-7964

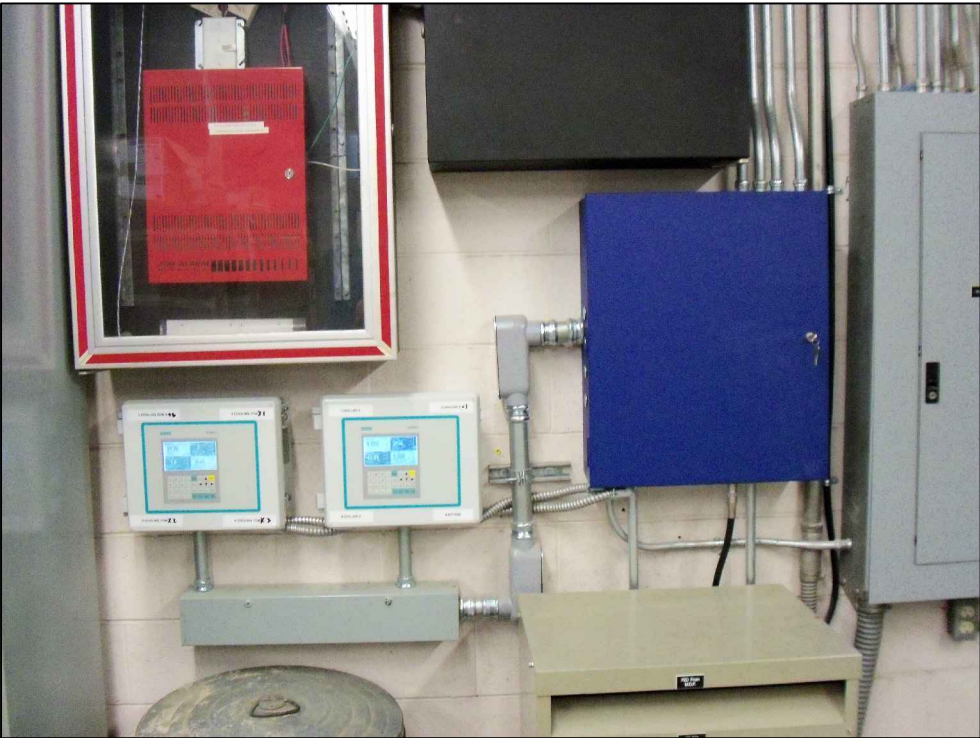
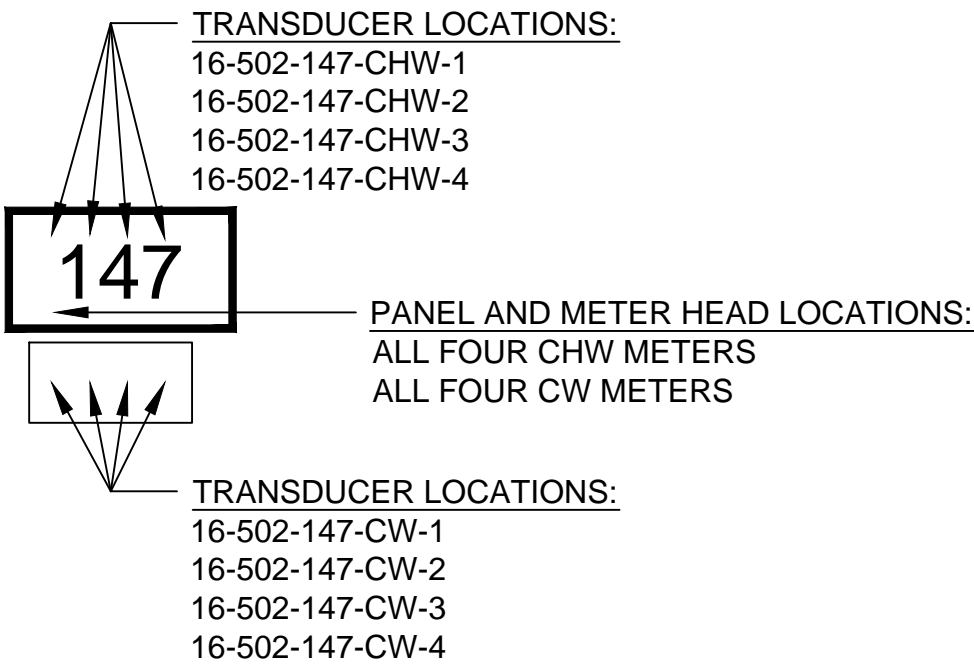
**TL SERVICES**  
INCORPORATED  
A SERVICE DISABLED VETERAN OWNED SMALL BUSINESS

TL SERVICES, INC  
ENGINEERING GROUP

Drawing Title		Project Title		Project Number		Office of Facilities Management
METER PLACEMENT DIAGRAMS Building 45 METER LOCATIONS		ADVANCED UTILITY METERING VAMC VISN 16		101-09-066		
				Site Number 16-502		
Approved Project Director		Location VAMC ALEXANDRIA, LOUISIANA		Drawing Number M-UM-10		
Date 16 MAY 2012		Checked KAS		Drawn KAS		 Department of Veterans Affairs
				Dwg. 10 of 13		



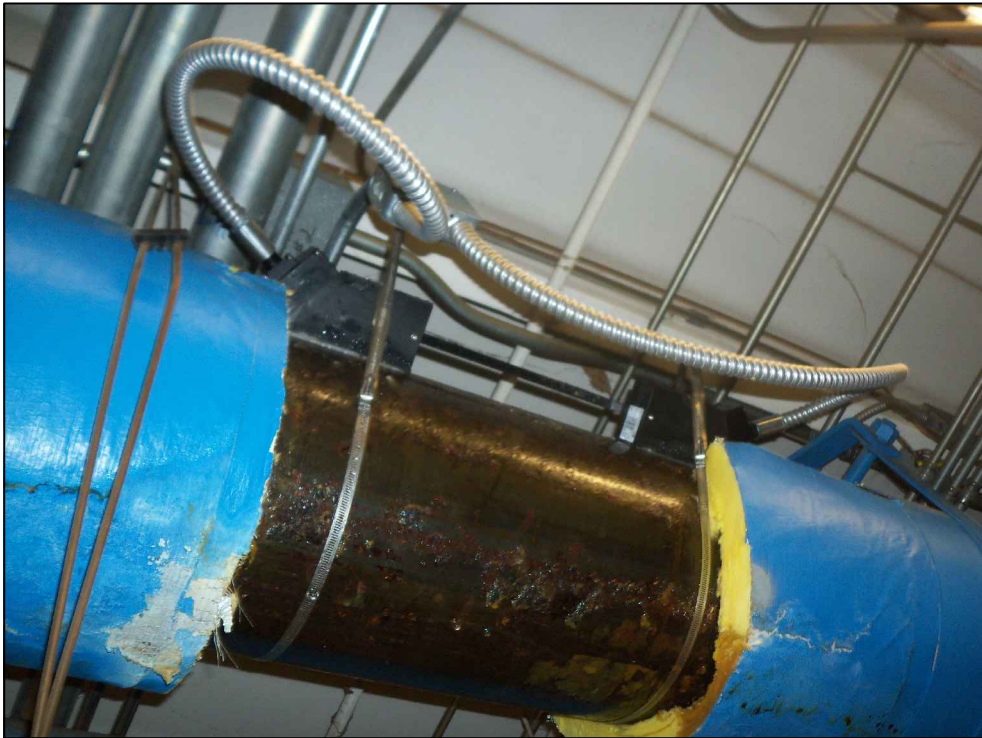
VHA ALEXANDRIA, LOUISIANA  
BUILDING 147 (CHILLER PLANT) METER LOCATION DIAGRAM



BLDG. 147 METER HEADS AND PANEL  
INSTALLED



16-502-147-CHW-1 INSTALLED



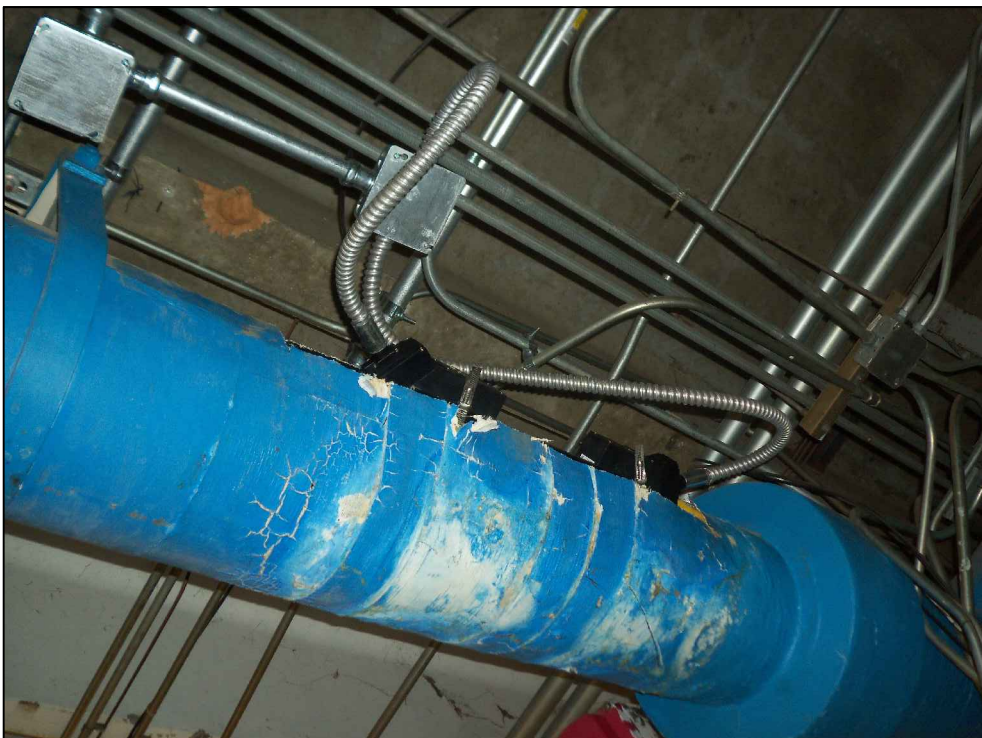
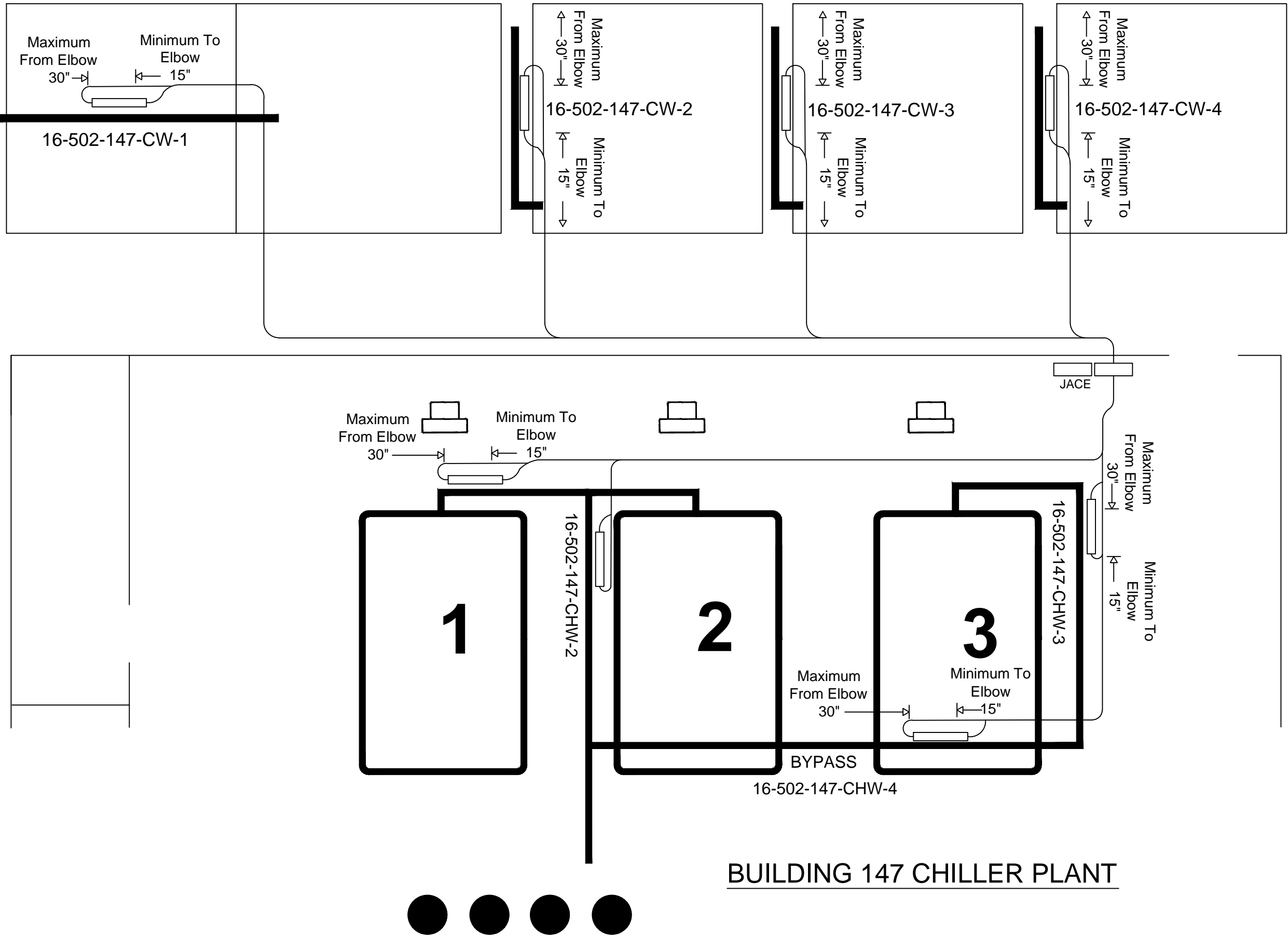
16-502-147-CHW-2 INSTALLED

16-502-147-CW-1    Transit Time Ultrasonic Flow Meter  
16-502-147-CW-2    Transit Time Ultrasonic Flow Meter  
16-502-147-CW-3    Transit Time Ultrasonic Flow Meter  
16-502-147-CW-4    Transit Time Ultrasonic Flow Meter

SIEMENS (2)    FUS1010-7ME3530-9AA10-0DD1-Z-K01-K01-K01-Y17  
Multi-Channel Flow only meter head with two pairs of transducers each  
and with up to 900' of transducer cable per transducer sets. (cables in pairs)

RADIO LINK    MDS 900mHz ETHERNET/INTERNET RADIO LINK  
MODBus interlink functionality

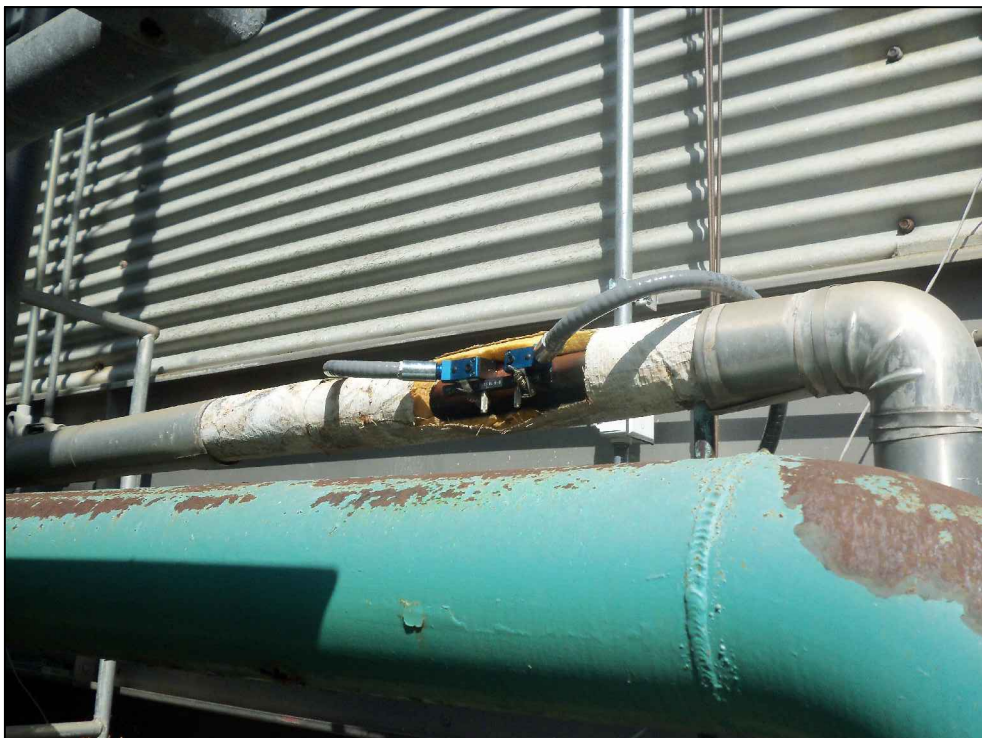
SIEMENS    588-702    Jace Controller



16-502-147-CHW-3 INSTALLED



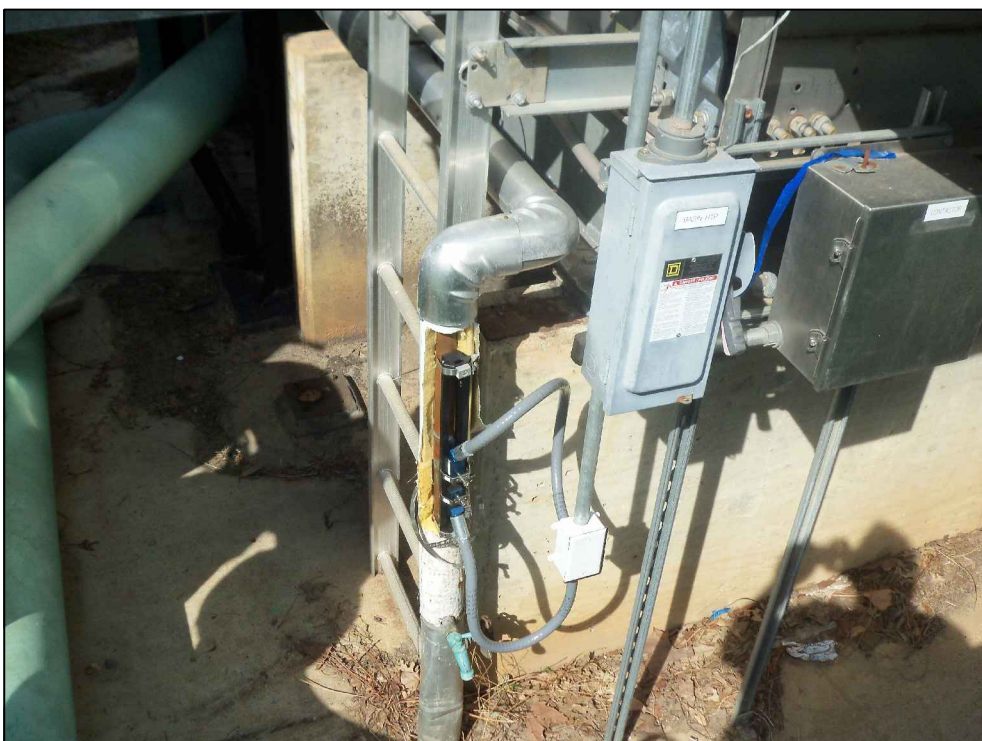
16-502-147-CW-1 INSTALLED



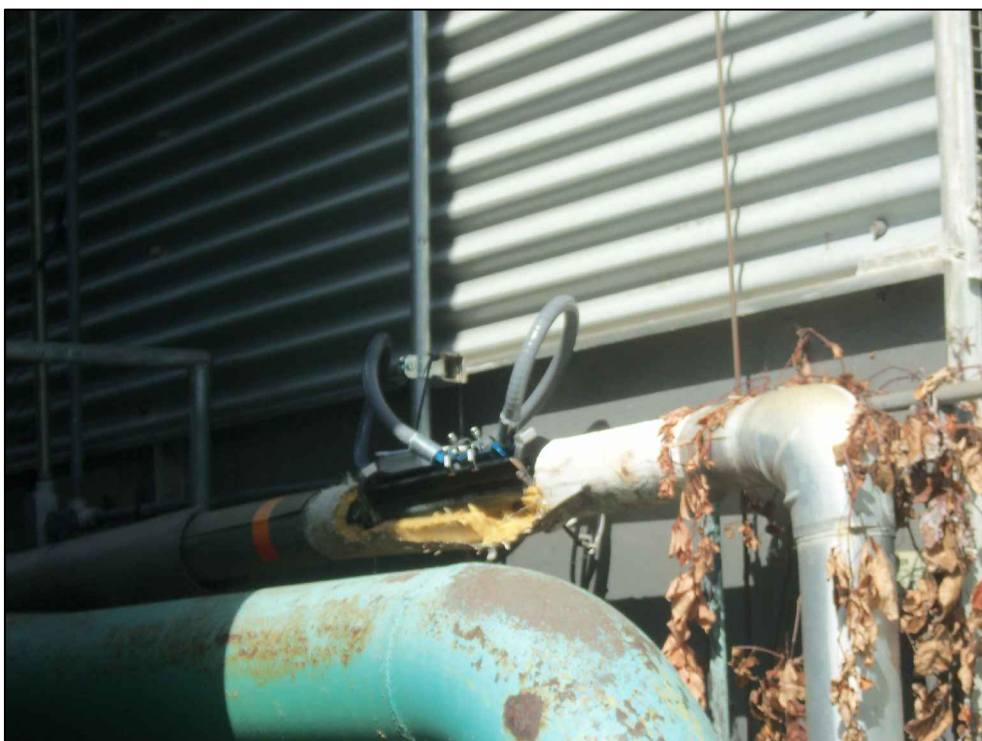
16-502-147-CW-2 INSTALLED



16-502-147-CHW-4 INSTALLED

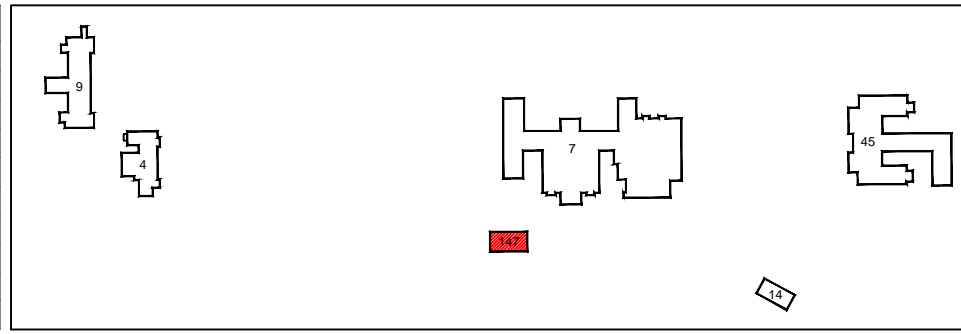


16-502-147-CW-3 INSTALLED



16-502-147-CW-4 INSTALLED

Reference Drawing	NO	Revision	ECN	Date	By



VHA ALEXANDRIA, LA  
AS-BUILT DRAWINGS

Office Information:  
TL Services, Inc.  
4733 Kibler Rd.  
Van Buren, AR 72956  
PH: 501-474-7222  
FAX: 501-471-7964



Drawing Title  
METER PLACEMENT DIAGRAMS  
Building 147  
Utility Plants

Approved Project Director

Project Title  
ADVANCED UTILITY METERING  
VAMC VISN 16

Location  
VAMC ALEXANDRIA, LOUISIANA  
Date  
16 MAY 2012  
Checked  
Drawn  
KAS

Project Number  
101-09-066  
Site Number  
16-502  
Drawing Number  
M-UM-12  
Dwg. 12 of 13

Office of  
Facilities  
Management

