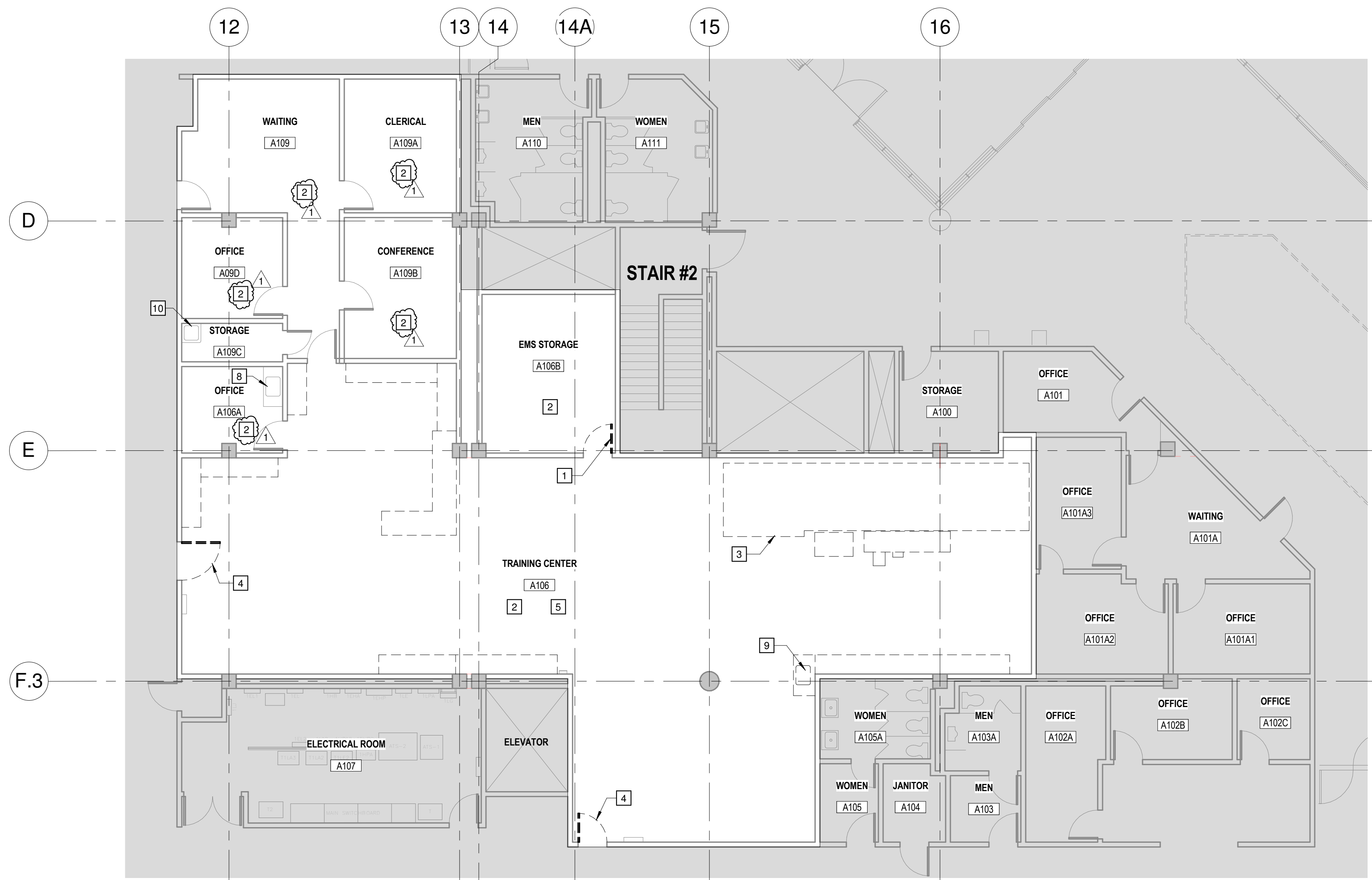
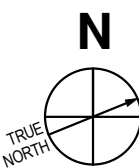


1 EXISTING REFLECTED CEILING PLAN - TRAINING CENTER (BLDG 334 - LEVEL 01)  
1/8" = 1'-0"



2 DEMOLITION FLOOR PLAN - - TRAINING CENTER (BLDG 334 - LEVEL 01)  
1/8" = 1'-0"



#### SHEET NOTES

1. REFER TO SHEET 1G001 FOR DEMOLITION NOTES.
2. ALL (E) FURNITURE AND EQUIPMENT WITHIN SPACE SHALL BE REMOVED BY THE OWNER PRIOR TO START OF DEMOLITION WORK.
3. EXISTING CEILING FIXTURES, CAMERAS, SPRINKLERS, DIFFUSERS ARE TO REMAIN U.O.N.
4. FOR MECHANICAL DEMOLITION WORK SEE 334TC-AD201
5. FOR PLUMBING DEMOLITION WORK SEE 334TC-PL201
6. FOR ELECTRICAL DEMOLITION WORK SEE 334TC-ED201

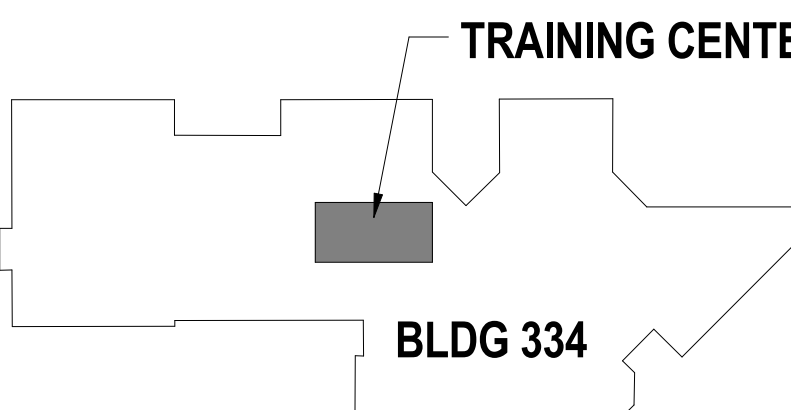
#### KEY NOTES

1. REMOVE (E) VAULT DOOR AND FRAME
2. REMOVE (E) FLOOR FINISHES
3. (E) EQUIPMENT TO BE RELOCATED BY THE VA
4. REMOVE AND REPLACE DOOR HARDWARE AND FRAME
5. REMOVE (E) CASEWORK
6. (E) SEISMIC JOINT TO REMAIN
7. (E) EXIT SIGN TO REMAIN
8. (E) SINK TO REMAIN
9. (E) SINK TO BE REMOVED
10. (E) MOP SINK TO REMAIN

#### LEGEND

- (E) DOOR & FRAME TO BE DEMOLISHED  
OTHER BUILDING ELEMENTS TO BE DEMOLISHED
- (E) WALL TO REMAIN
- (E) SHAFT TO REMAIN
- NOT IN CONTRACT
- (E) CASEWORK TO BE REMOVED
- (E) SPRINKLER TO REMAIN
- (E) LIGHT FIXTURE TO REMAIN

#### KEY PLAN



100% CD / BID SUBMISSION  
FEBRUARY 2, 2016

DEDUCTIVE ALTERNATE #2 - FOR MORE INFORMATION SEE GI002

#### ARCHITECT

**POLYTECH ASSOCIATES INC.**  
POLYTECH ASSOCIATES INC.  
235 Pine Street, 17th Floor  
San Francisco, CA 94104  
TEL (415) 397-3117  
FAX (415) 397-1517

#### Drawing Title

DEMOLITION FLOOR PLAN AND EXISTING REFLECTED CEILING PLAN -  
TRAINING CENTER (BLDG 334 - LEVEL 01)

Approved: Project Director

#### Project Title

POST TRAUMATIC STRESS DIAGNOSIS (PTSD)  
EXPANSION & RENOVATION

#### Location

795 WILLOW ROAD, MENLO PARK, CA

#### Date

12/18/15

#### Checked

NT

#### Drawn

PS

#### Project Number

640-Z35003

#### Building Number

BLDG 334

#### Drawing Number

334TC AD101

Office of  
Construction  
and Facilities  
Management

Department of  
Veterans Affairs