

- GENERAL NOTES:**
 1. M.C. SHALL DRAIN AND FILL CHILLED WATER SYSTEM AS REQUIRED FOR NEW SENSORS, VALVES, AND OTHER COMPONENTS. COORDINATE WITH VA STAFF FOR THIS WORK. SYSTEM DRAIN AND FILL SHALL BE SCHEDULED SEASONALLY WHEN THE SYSTEM IS NOT OPERATION.
- DEMOLITION NOTES:**
 (E) REMOVE EXISTING AUTOFLOW CONTROL VALVE & ALL ASSOCIATED FITTINGS. PREPARE REMAINING PIPING FOR NEW CONNECTION. MODIFY ALL PIPING REQ'D FOR INSTALLATION.

F:\Projects\201202\DWG\201202-22-H1.dwg Jun 15, 2016 - 8:20am

Amendment	06/15/16
Revisions	Date



Dept. of Veterans Affairs
Health Care System
2101 Elm Street North
Fargo, ND 58102



IMAGE GROUP INC.
403 CENTER AVENUE, SUITE 300
MOORHEAD, MN 56560



Fargo • Grand Forks • Bismarck
Alexandria • Minneapolis • 877.380.0501

IMAGE GROUP INC., Architecture & Interiors
OBERMILLER NELSON ENGINEERING, Mechanical Engineers
MBN ENGINEERING, Civil & Electrical Engineers
SOLLEN & LARSON ENGINEERING, Structural Engineers

Drawing Title
**HVAC COIL
DEMOLITION SCHEMATIC**

VA Project No.
437-14-111

Building No.
56

Contract No.
**VA263-P-1217
VA263-C-**

AutoCAD File Name
2013282-22-H1.dwg

Project Title
REPLACE CENTRAL CHILLER PLANT

Designed By
JCP

Location
**FARGO VA HEALTH CARE SYSTEM
FARGO, ND**

Checked By
JCP

Drawn By
JAF

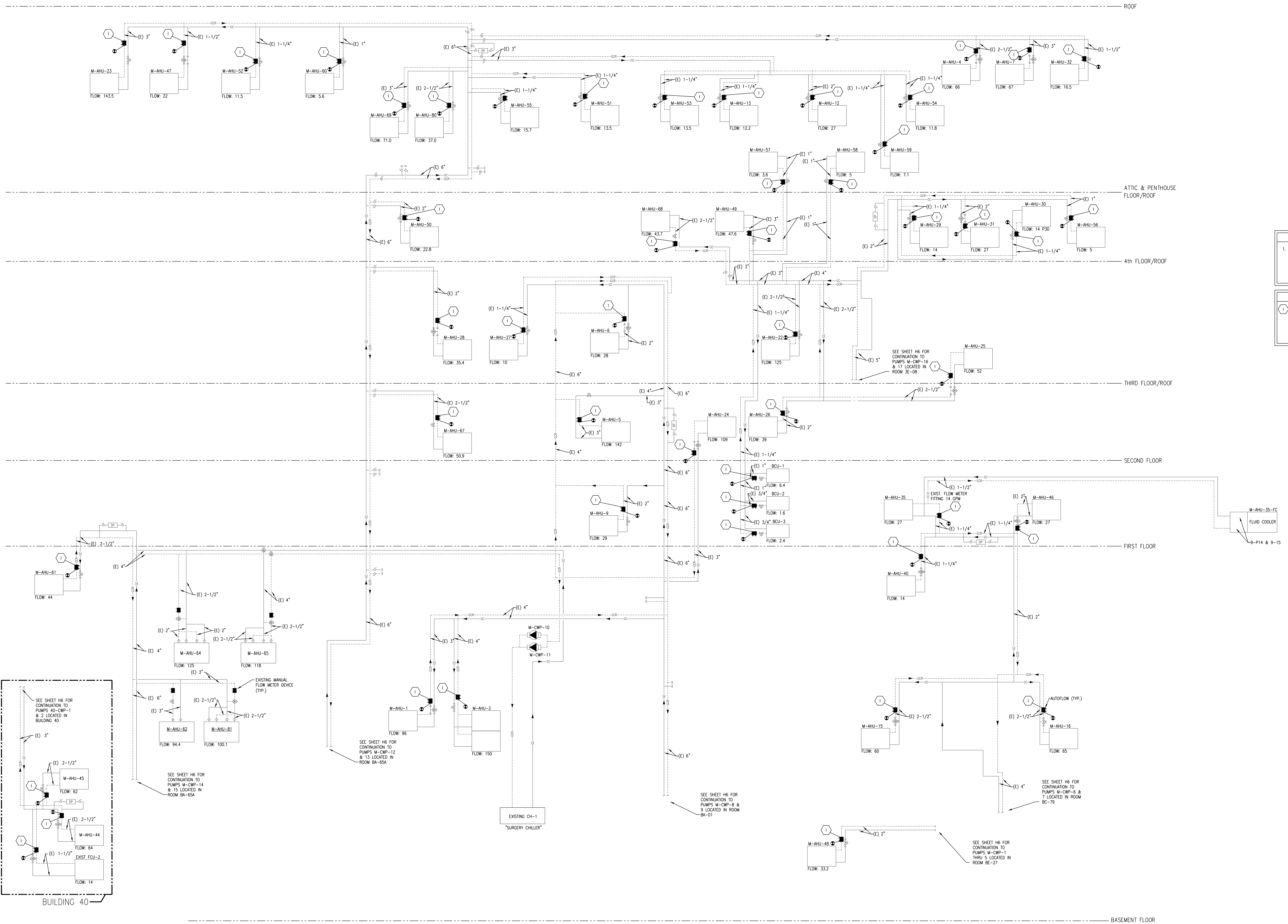
Date
DECEMBER 18, 2015

Scale
AS SHOWN

Drawing No.
H11

Dwg. 22 of 26

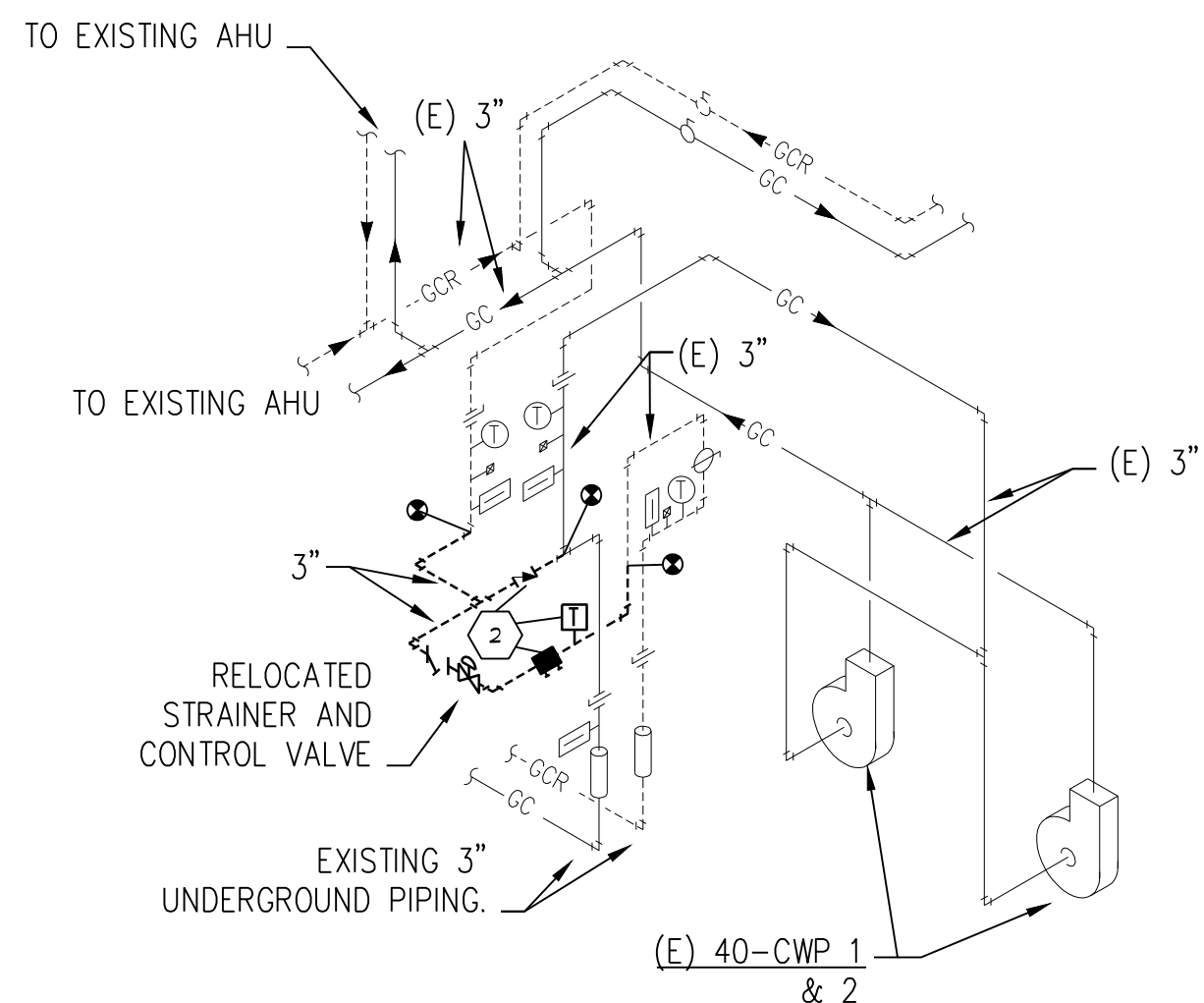




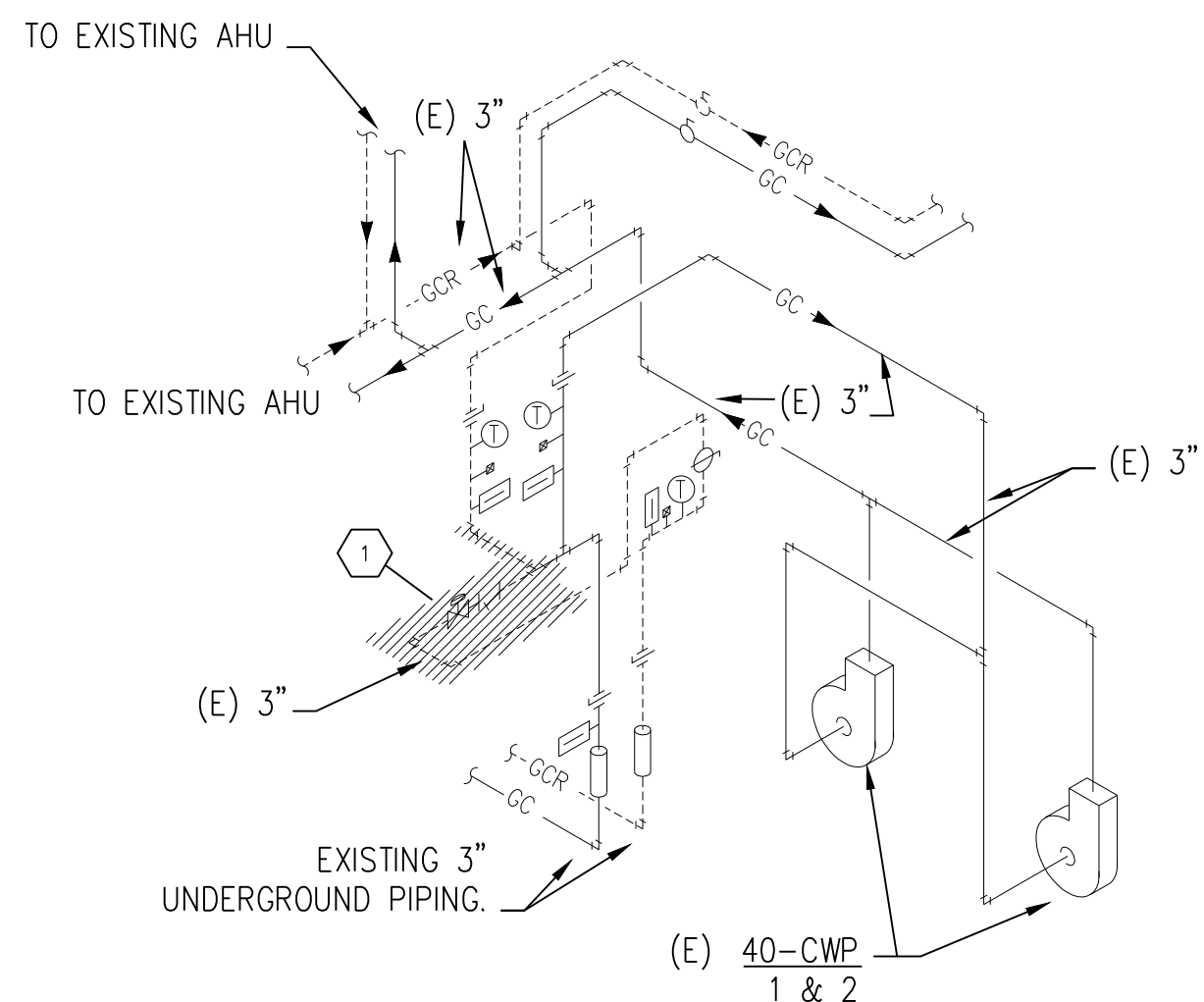
- GENERAL NOTES:**
1. M.C. SHALL DRAW AND FILL CHILLED WATER SYSTEM AS REQUIRED FOR NEW SENSORS, VALVES, AND OTHER COMPONENTS. COORDINATE WITH VA STAFF FOR THIS WORK. SYSTEM DRAIN AND FILL SHALL BE SCHEDULED SEASONALLY WHEN THE SYSTEM IS NOT OPERATION.
- PLAN NOTES:**
- Ⓢ REPLACE EXISTING AUTOFLOW CONTROL VALVE & ALL ASSOCIATED FITTINGS WITH MANUAL FLOW METER FITTINGS. MODIFY ALL PIPING REDD FOR INSTALLATION. EVERY EXISTING COIL IN THE CHILLED WATER SYSTEM SHALL BE RE-BALANCED AFTER THE FLOW METERS ARE REPLACED. REFER TO SCHEMATIC FOR FLOW CRITERIA.

F:\Projects\201202\DWG\201202-23-H12.dwg Jun 15, 2016 - 8:25am

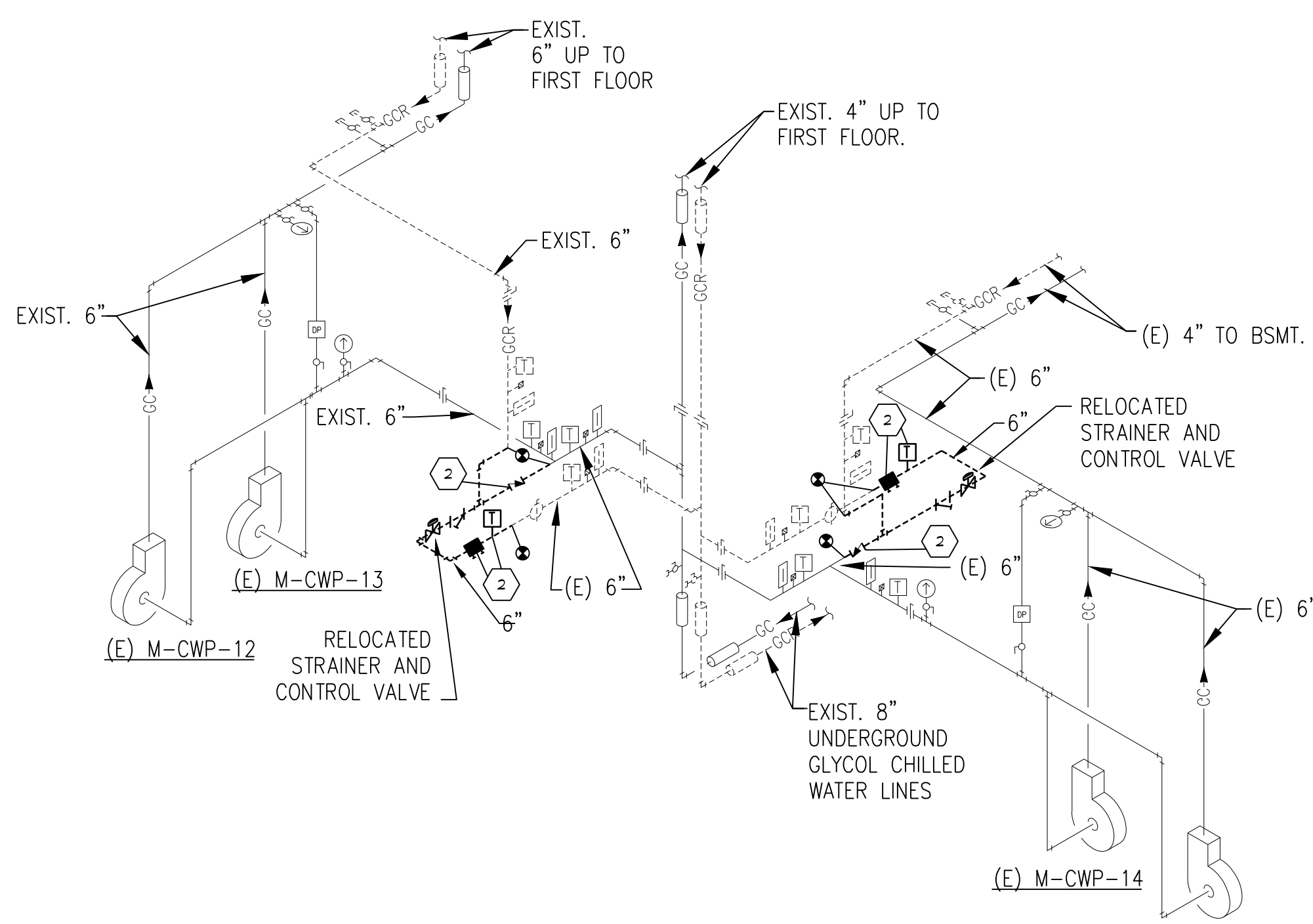
Dept. of Veterans Affairs Health Care System 2101 Elm Street North Fargo, ND 58102		IMAGE GROUP INC. 403 CENTER AVENUE, SUITE 300 MOORHEAD, MN 56560 Fargo • Grand Forks • Bismarck Alexandria • Minneapolis • 877.380.0501		ONE Fargo • Grand Forks • Bismarck Alexandria • Minneapolis • 877.380.0501		SOLIN & LARSON ENGINEERING Structural Engineers		VA Project No. 437-14-111		Contract No. VA263-P-1217 VA263-C-		Designed By JCP		Checked By JCP		Drawn By JAF		Drawing No. H12		Dwg. 23 of 26		Department of Veterans Affairs	
Amendment 06/15/16		Revisions Date		Project Title REPLACE CENTRAL CHILLER PLANT		Date DECEMBER 18, 2015		Scale AS SHOWN		Building No. 56		AutoCAD File Name 2013282-23-H12.dwg		Location FARGO VA HEALTH CARE SYSTEM FARGO, ND		Building Title HVAC COIL SCHEMATIC		Project Title REPLACE CENTRAL CHILLER PLANT		Date DECEMBER 18, 2015		Scale AS SHOWN	



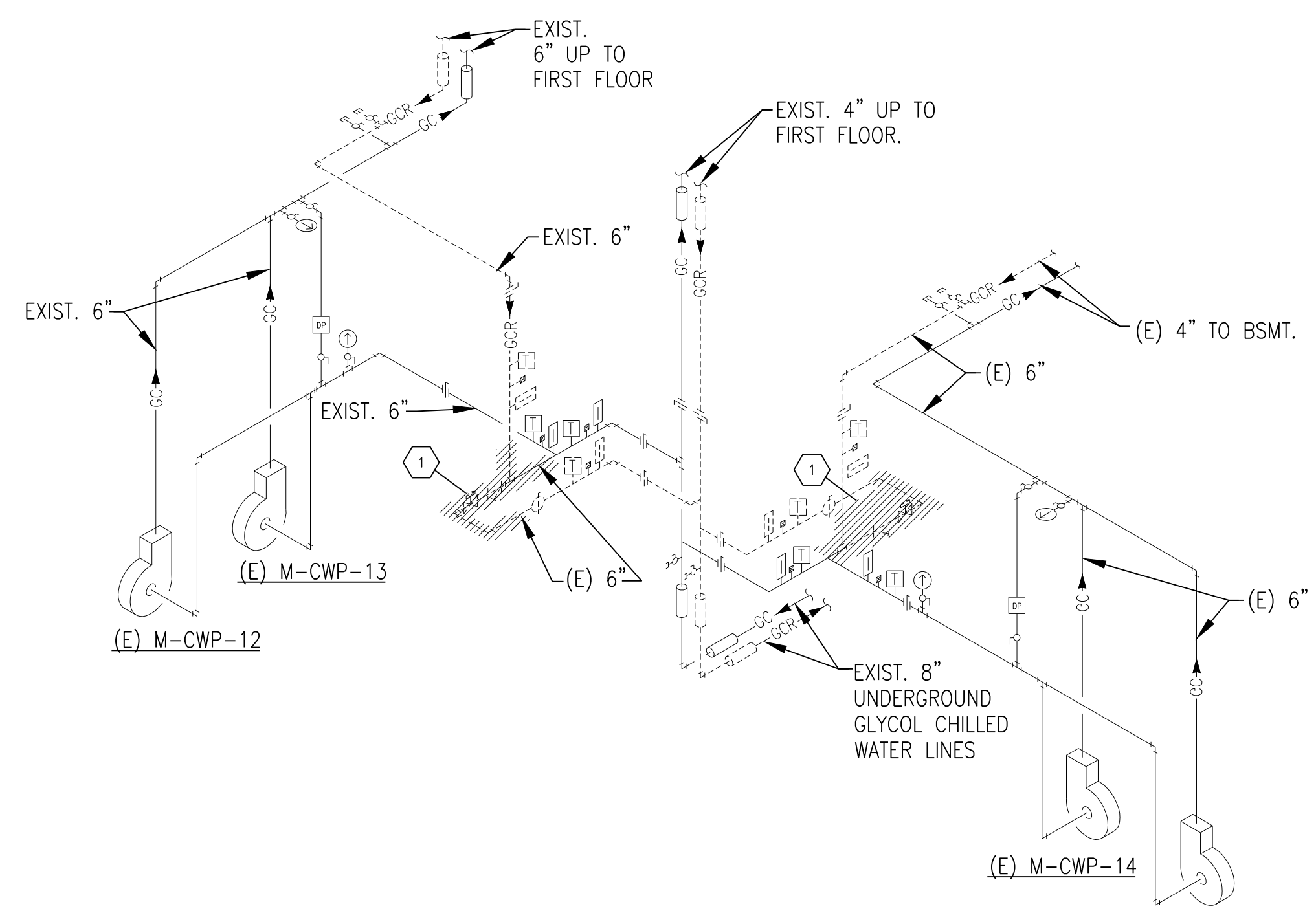
12
H13
BUILDING 40 MECHANICAL ROOM
CHILLED WATER PIPING ISOMETRIC
NO SCALE



11
H13
BUILDING 40 MECHANICAL ROOM
CHILLED WATER PIPING DEMOLITION ISOMETRIC
NO SCALE

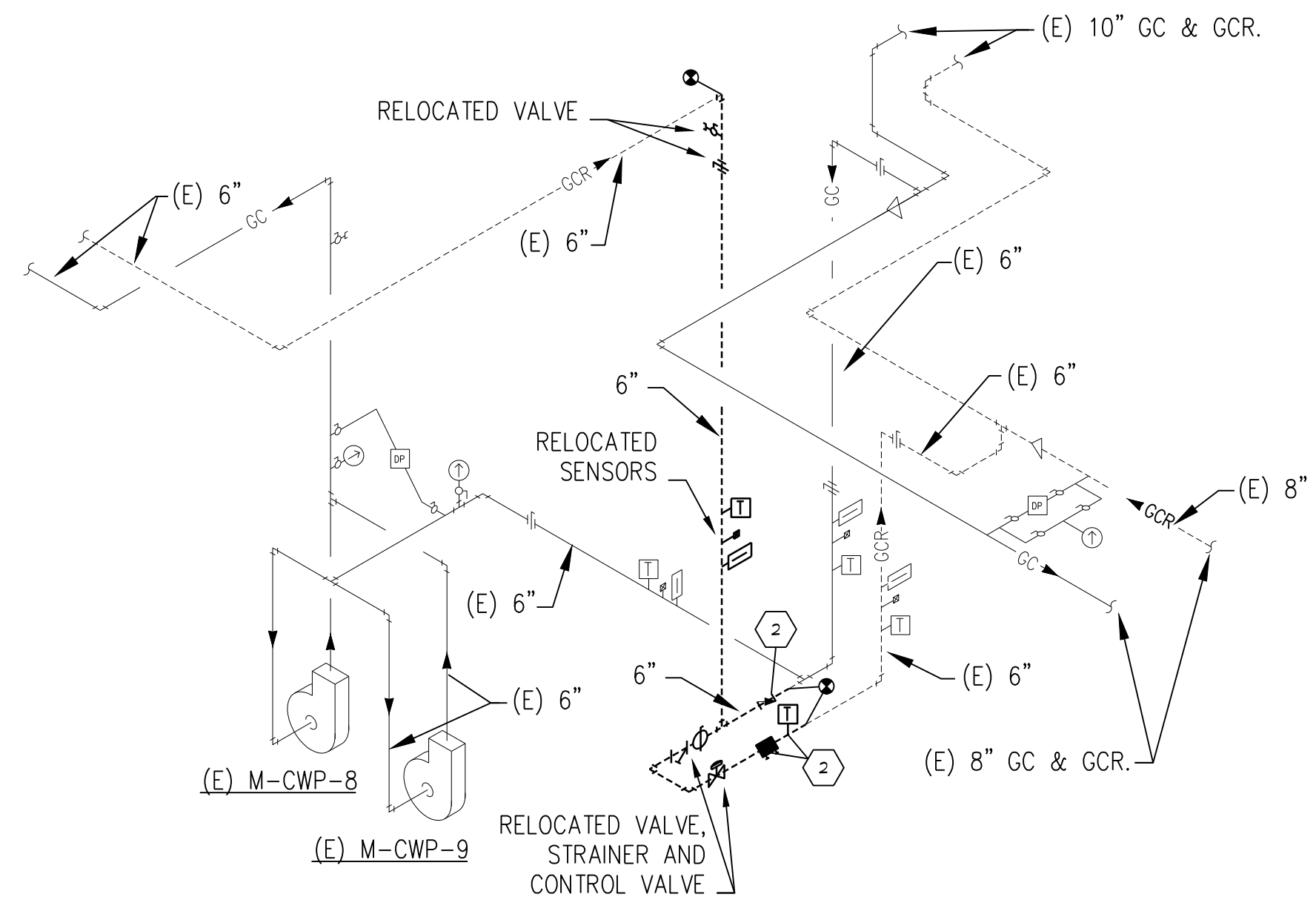


10
H13
MECHANICAL ROOM BA-65A
CHILLED WATER PIPING ISOMETRIC
NO SCALE

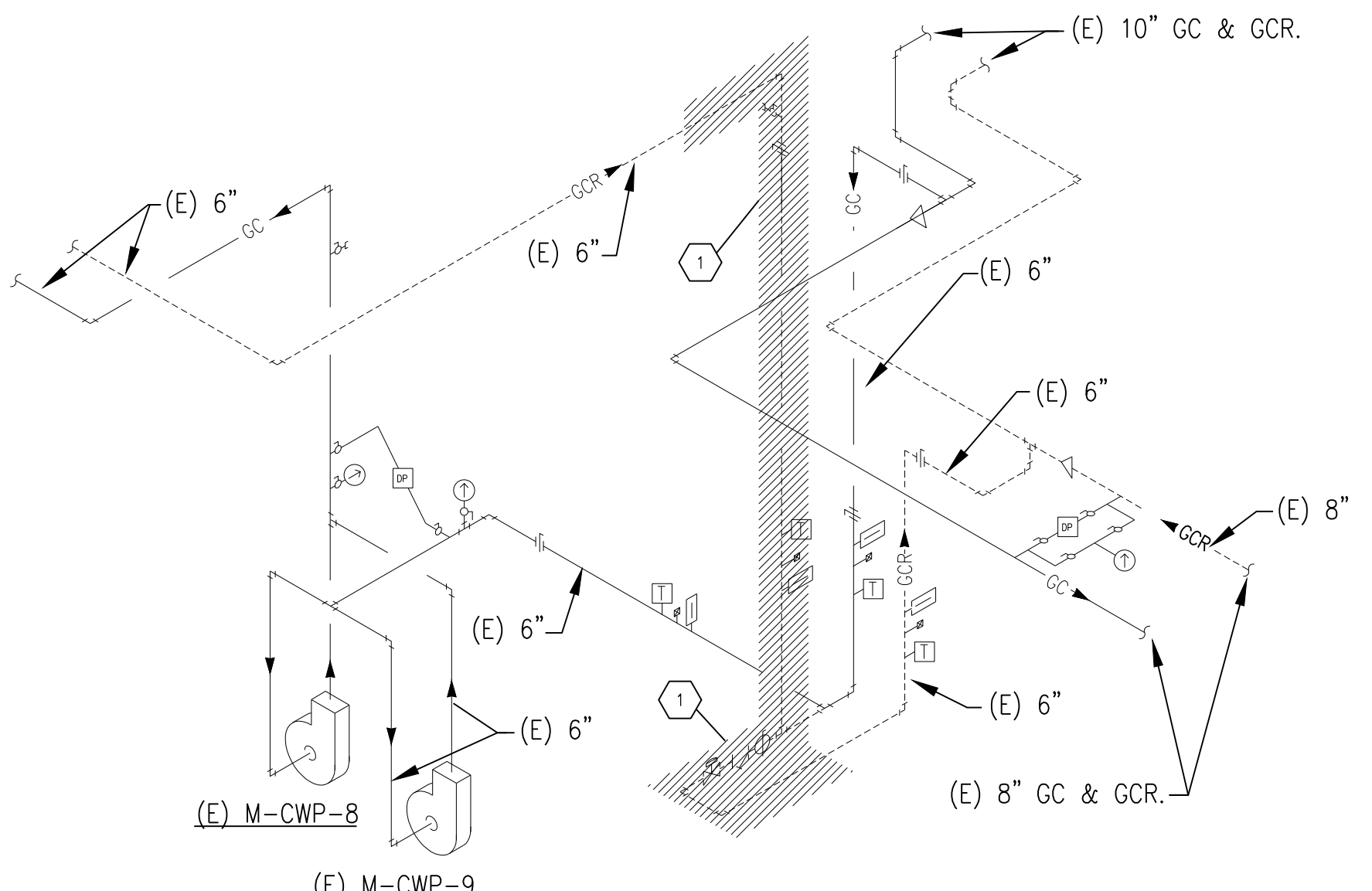


9
H13
MECHANICAL ROOM BA-65A CHILLED
WATER PIPING DEMOLITION ISOMETRIC
NO SCALE

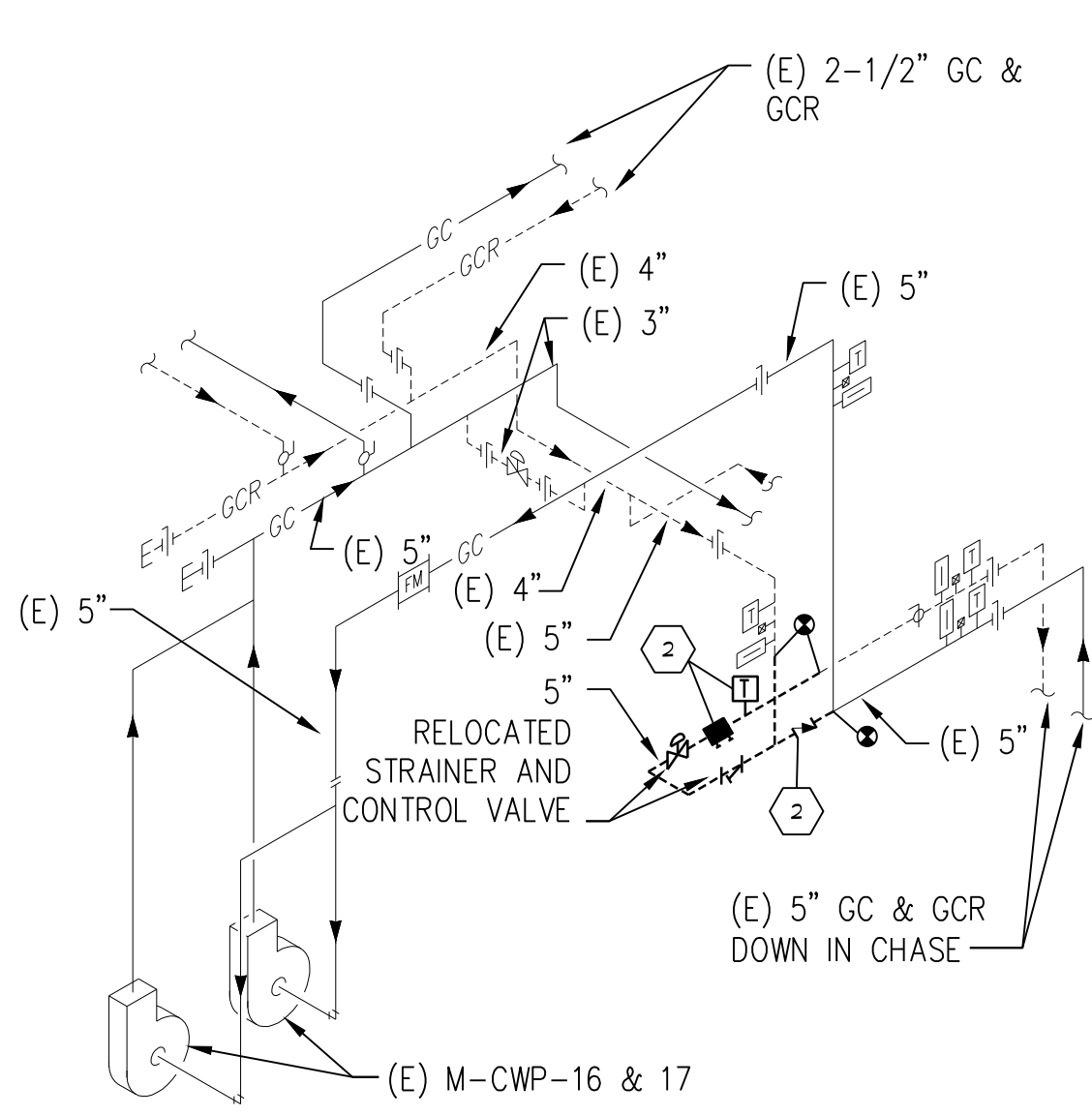
- GENERAL NOTES:**
- M.C. SHALL DRAIN AND FILL CHILLED WATER SYSTEMS AS REQUIRED FOR NEW SENSORS, VALVES, AND OTHER COMPONENTS. COORDINATE WITH VA STAFF FOR THIS WORK. SYSTEM DRAIN AND FILL SHALL BE SCHEDULED SEASONALLY WHEN THE SYSTEM IS NOT OPERATING.
- DEMOLITION NOTES:**
- RELOCATE EXISTING VALVES AND REMOVE EXISTING PIPING IN PREPARATION FOR NEW VALVES. PREPARE REMAINING PIPING FOR NEW CONNECTION. MODIFY ALL PIPING REQ'D FOR INSTALLATION.
- PLAN NOTES:**
- PROVIDE NEW CHECK VALVE BETWEEN SUPPLY AND RETURN CONNECTIONS, NEW FLOW METER FITTING, AND NEW RETURN CHILLED WATER TEMPERATURE SENSOR. MODIFY ALL PIPING AND RELOCATED ALL SENSORS, THERMOMETER, FITTINGS, ETC. AS REQ'D FOR INSTALLATION. REFER TO HVAC SCHEMATIC ON H6 FOR REFERENCE TO FLOW METER FITTING.



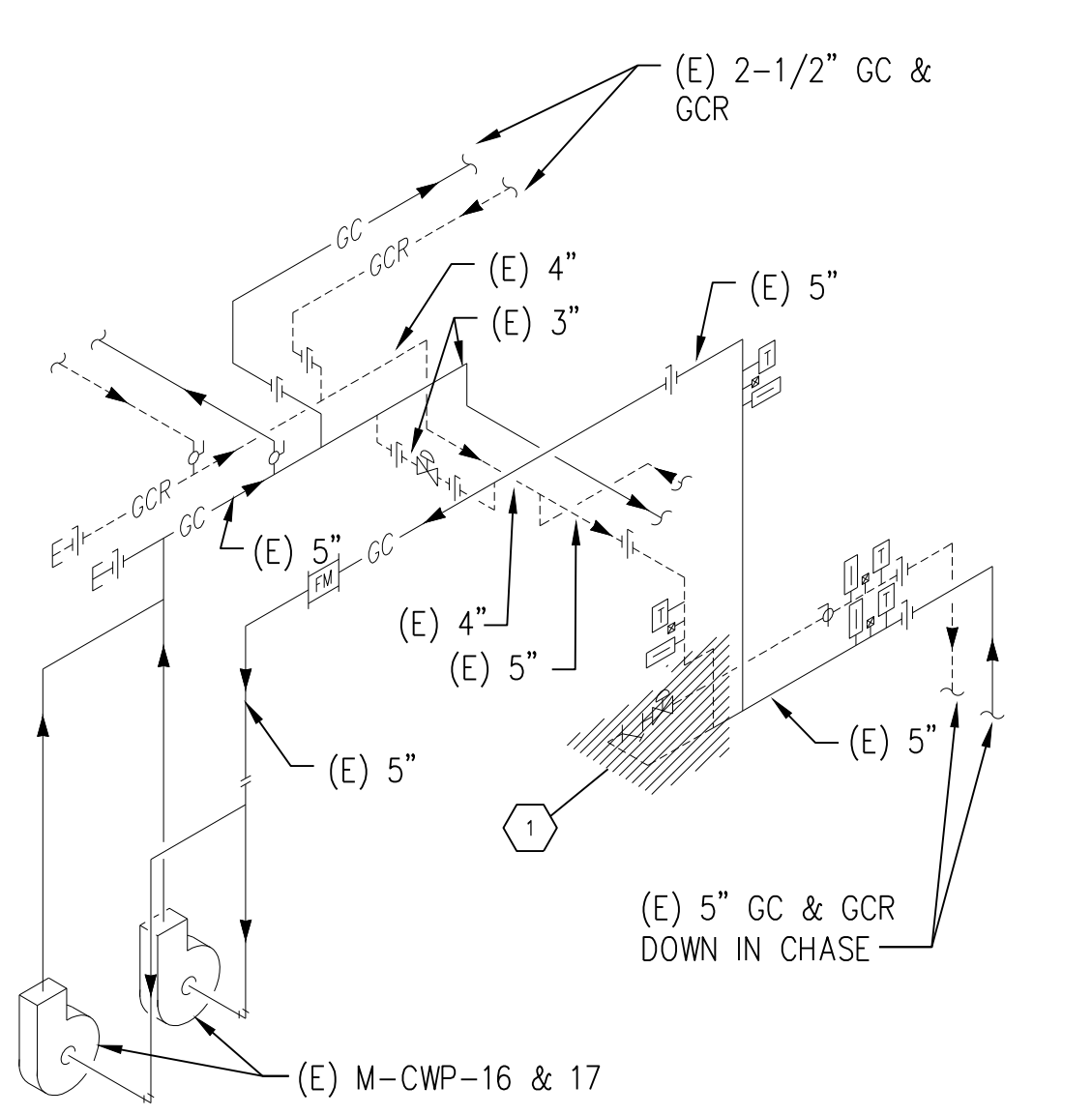
8
H13
MECHANICAL ROOM BA-01
CHILLED WATER PIPING ISOMETRIC
NO SCALE



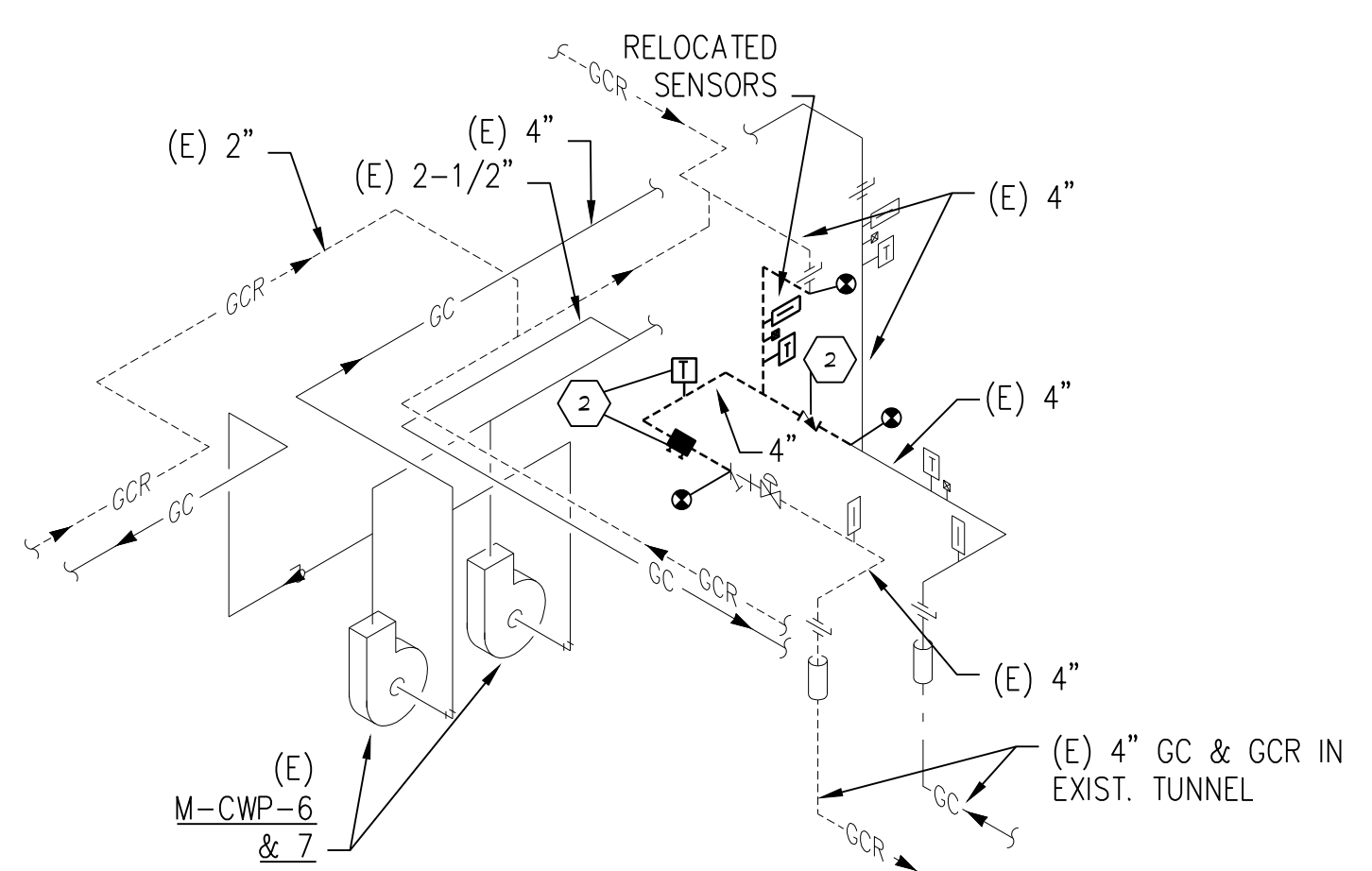
7
H13
MECHANICAL ROOM BA-01 CHILLED
WATER PIPING DEMOLITION ISOMETRIC
NO SCALE



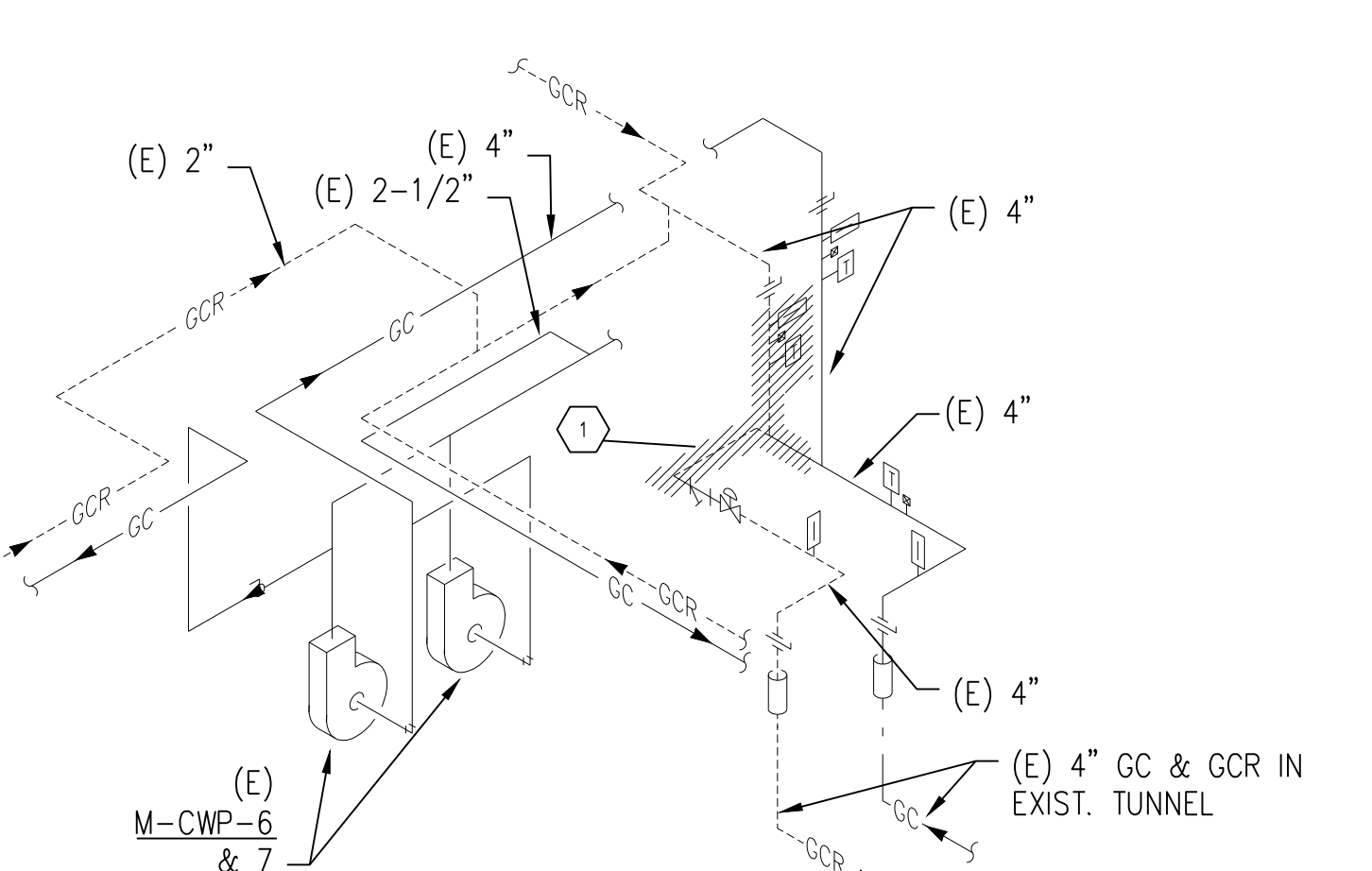
6
H13
MECHANICAL ROOM 3E-08
CHILLED WATER PIPING ISOMETRIC
NO SCALE



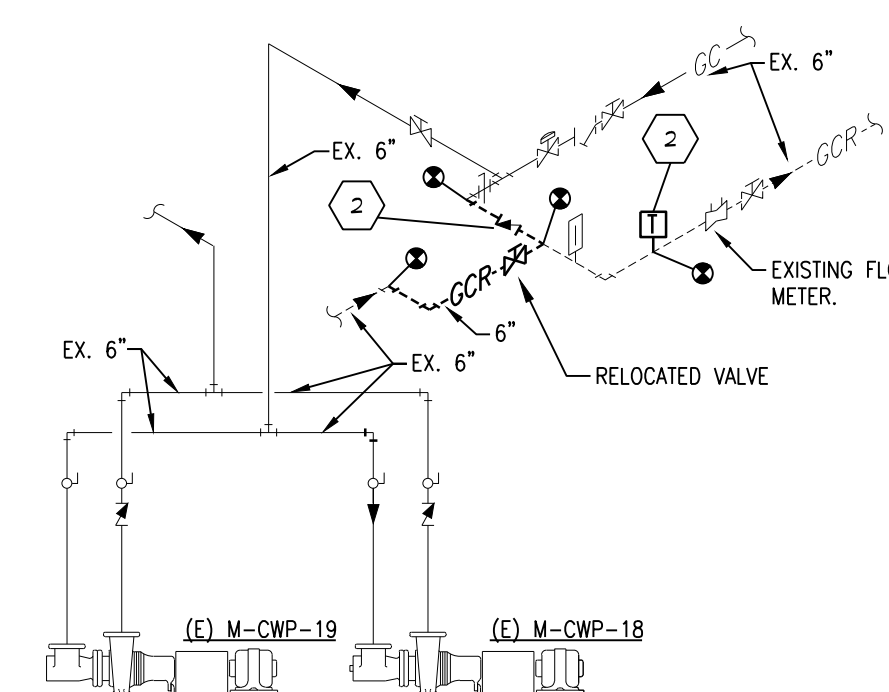
5
H13
MECHANICAL ROOM 3E-08 CHILLED
WATER PIPING DEMOLITION ISOMETRIC
NO SCALE



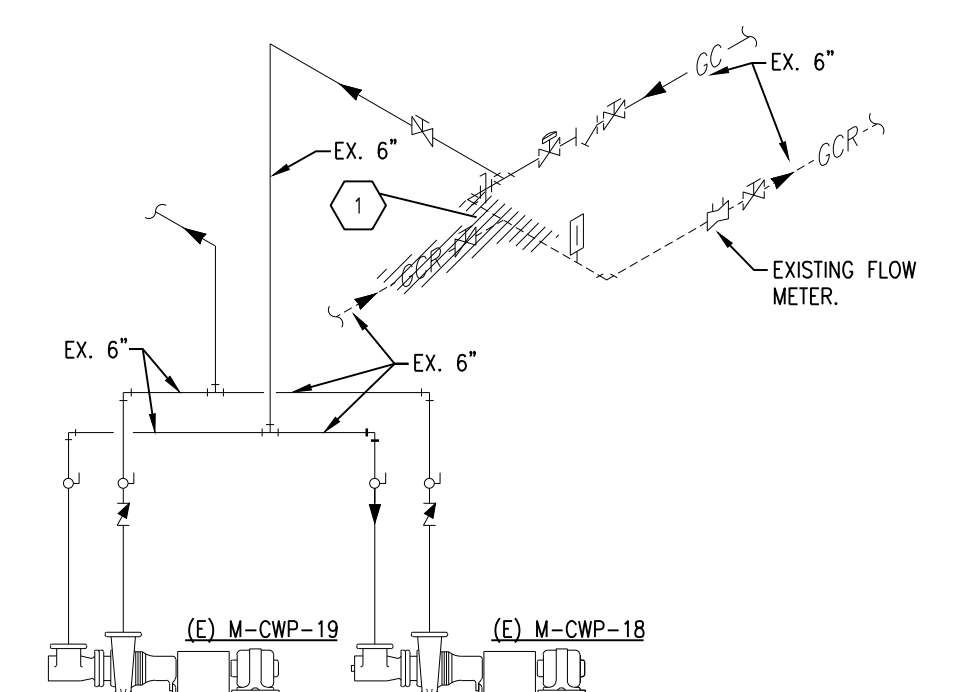
4
H13
MECHANICAL ROOM BC-T9
CHILLED WATER PIPING ISOMETRIC
NO SCALE



3
H13
MECHANICAL ROOM BC-T9 CHILLED
WATER PIPING DEMOLITION ISOMETRIC
NO SCALE



2
H13
MECHANICAL ROOM 127
CHILLED WATER PIPING ISOMETRIC
NO SCALE



1
H13
MECHANICAL ROOM 127 CHILLED
WATER PIPING DEMOLITION ISOMETRIC
NO SCALE



Dept. of Veterans Affairs
Health Care System
2101 Elm Street North
Fargo, ND 58102



IMAGE GROUP INC.
403 CENTER AVENUE, SUITE 300
MOORHEAD, MN 56560



ONE
Fargo • Grand Forks • Bismarck
Alexandria • Minneapolis • 877.380.0501

IMAGE GROUP INC., Architecture & Interiors
OBERMILLER NELSON ENGINEERING, Mechanical Engineers
MBN ENGINEERING, Civil & Electrical Engineers
SOLLEN & LARSON ENGINEERING, Structural Engineers

Drawing Title
**MECHANICAL ROOM CHILLED
WATER PUMP ISOMETRICS**

VA Project No.
437-14-111

Building No.
56

Contract No.
VA263-P-1217
VA263-C-

AutoCAD File Name
2013282-24-H13.dwg

Project Title
REPLACE CENTRAL CHILLER PLANT

Designed By
JCP

Checked By
JCP

Drawn By
JAF

Location
FARGO VA HEALTH CARE SYSTEM
FARGO, ND

Date
DECEMBER 18, 2015

Scale
AS SHOWN

Drawing No.
H13

Dwg. 24 of 26

