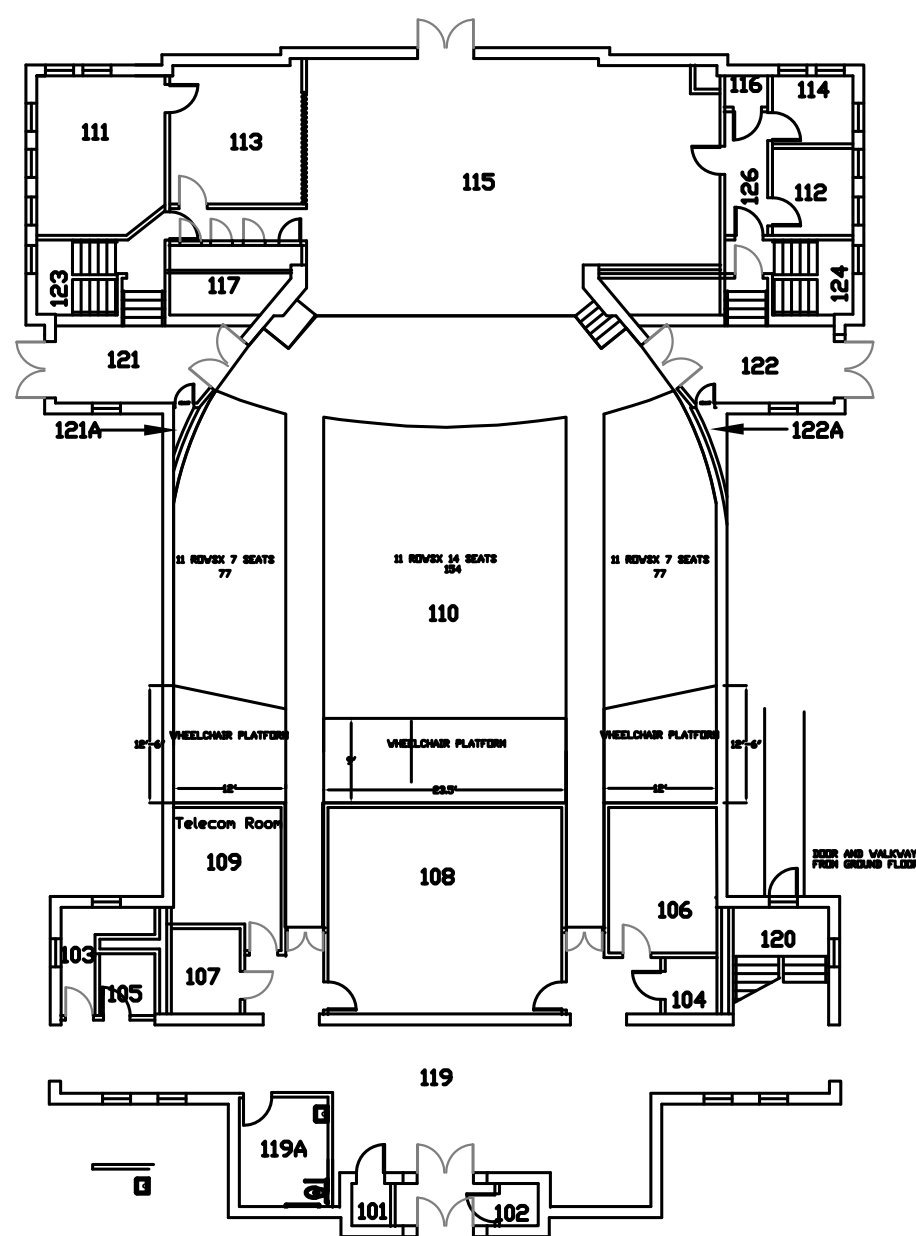
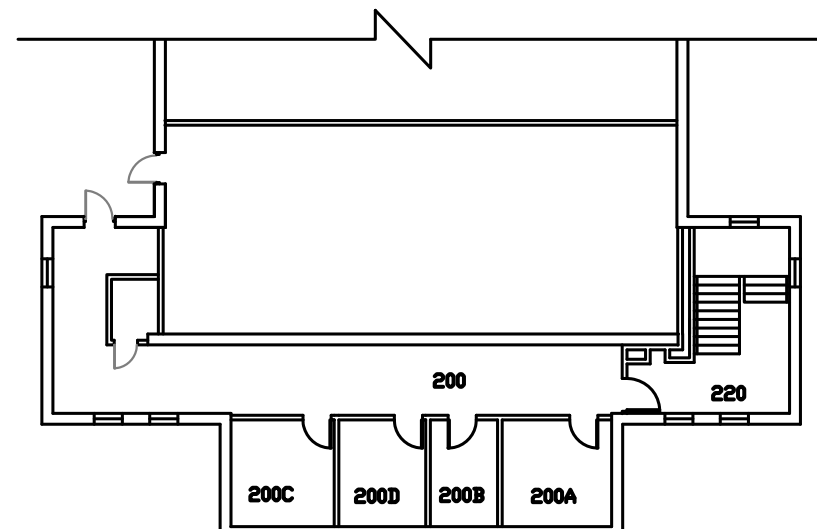


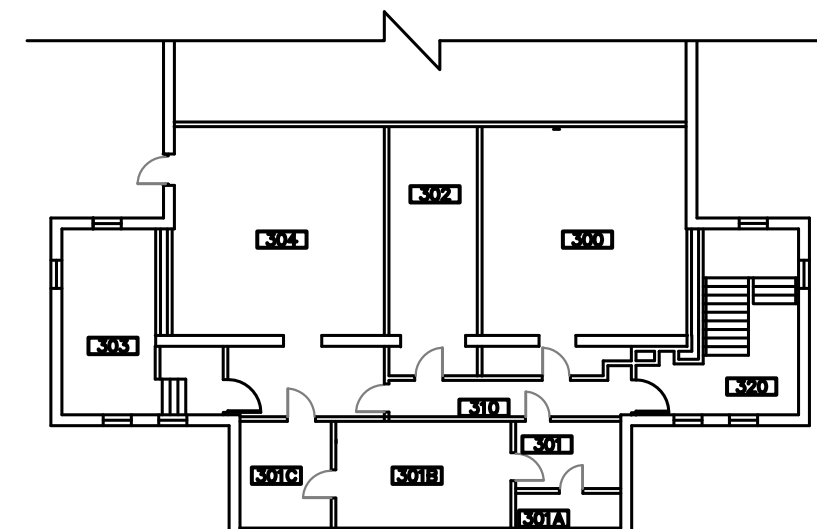
LONGITUDINAL SECTION
SCALE: 1/8"=1'-0"



FIRST FLOOR PLAN



SECOND FLOOR PLAN



THIRD FLOOR PLAN

9/15/14

BLDG. & FLOOR #: 210-1,2&3



DEPARTMENT OF VETERANS AFFAIRS
MEDICAL & REGIONAL OFFICE CENTER
TOGUS, MAINE 04330