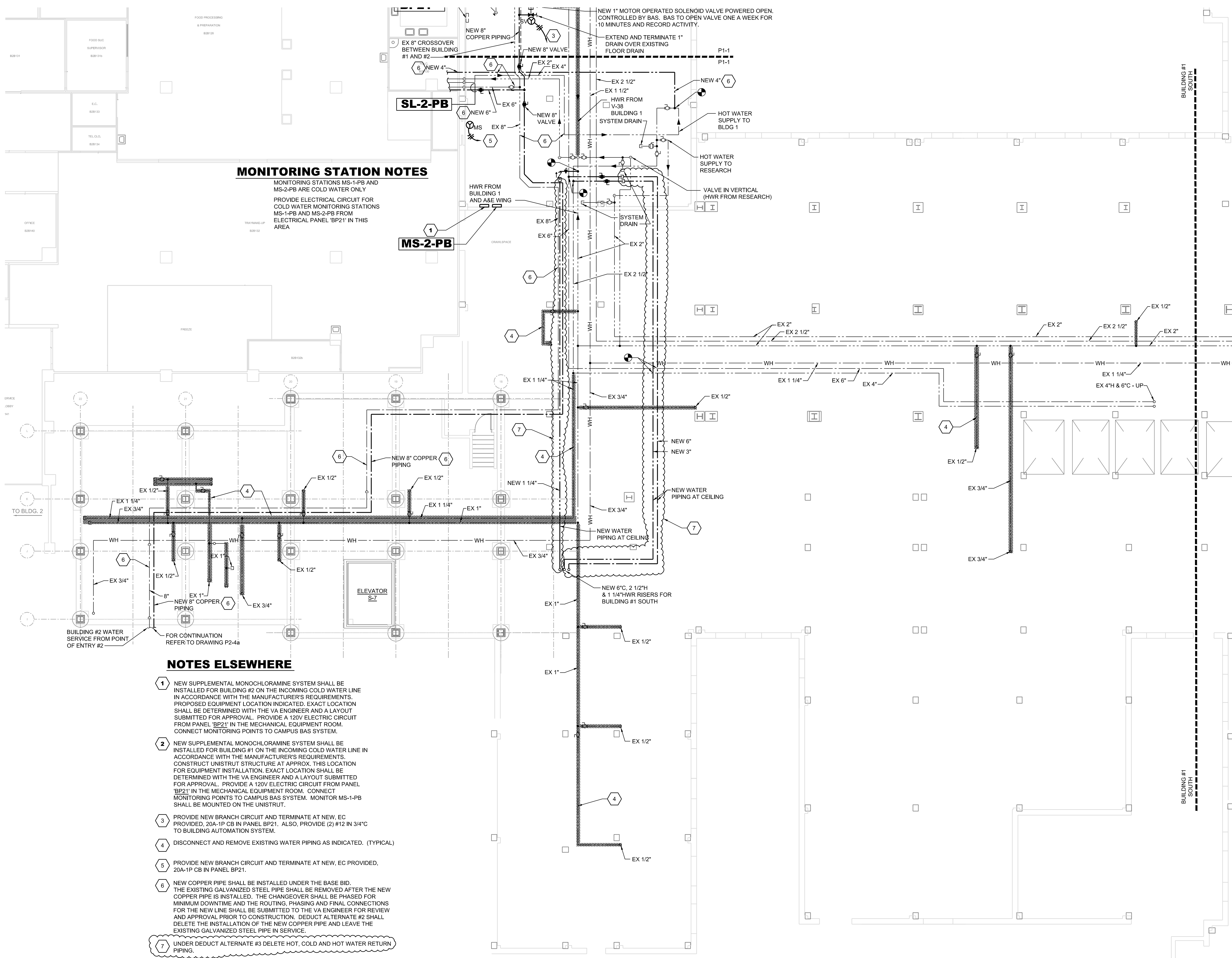
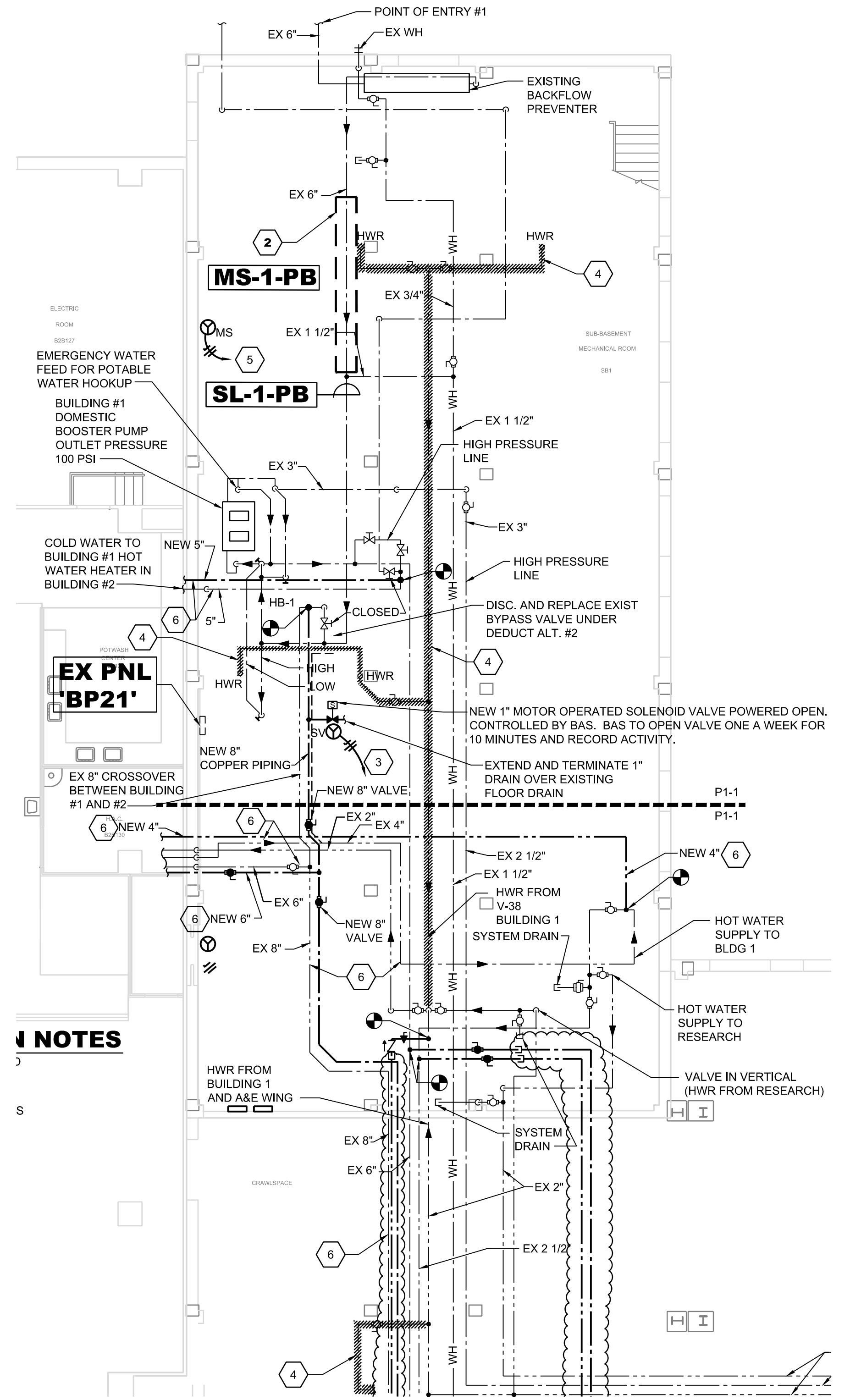


three inches = one foot  
one and one half inches = one foot  
one inch = one foot  
three quarters inch = one foot  
one half inch = one foot  
three eighths inch = one foot  
one eighth inch = one foot  
one quarter inch = one foot  
one eighth inch = one foot



**MONITORING STATION NOTES**  
MONITORING STATIONS MS-1-PB AND MS-2-PB ARE COLD WATER ONLY. PROVIDE ELECTRICAL CIRCUIT FOR COLD WATER MONITORING STATIONS MS-1-PB AND MS-2-PB FROM ELECTRICAL PANEL 'BP21' IN THIS AREA.

- NOTES ELSEWHERE**
- 1 NEW SUPPLEMENTAL MONOCHLORAMINE SYSTEM SHALL BE INSTALLED FOR BUILDING #2 ON THE INCOMING COLD WATER LINE IN ACCORDANCE WITH THE MANUFACTURER'S REQUIREMENTS. PROPOSED EQUIPMENT LOCATION INDICATED. EXACT LOCATION SHALL BE DETERMINED WITH THE VA ENGINEER AND A LAYOUT SUBMITTED FOR APPROVAL. PROVIDE A 120V ELECTRIC CIRCUIT FROM PANEL 'BP21' IN THE MECHANICAL EQUIPMENT ROOM. CONNECT MONITORING POINTS TO CAMPUS BAS SYSTEM.
  - 2 NEW SUPPLEMENTAL MONOCHLORAMINE SYSTEM SHALL BE INSTALLED FOR BUILDING #1 ON THE INCOMING COLD WATER LINE IN ACCORDANCE WITH THE MANUFACTURER'S REQUIREMENTS. CONSTRUCT UNISTRUT STRUCTURE AT APPROX. THIS LOCATION FOR EQUIPMENT INSTALLATION. EXACT LOCATION SHALL BE DETERMINED WITH THE VA ENGINEER AND A LAYOUT SUBMITTED FOR APPROVAL. PROVIDE A 120V ELECTRIC CIRCUIT FROM PANEL 'BP21' IN THE MECHANICAL EQUIPMENT ROOM. CONNECT MONITORING POINTS TO CAMPUS BAS SYSTEM. MONITOR MS-1-PB SHALL BE MOUNTED ON THE UNISTRUT.
  - 3 PROVIDE NEW BRANCH CIRCUIT AND TERMINATE AT NEW, EC PROVIDED, 20A-1P CB IN PANEL BP21. ALSO, PROVIDE (2) #12 IN 3/4" TO BUILDING AUTOMATION SYSTEM.
  - 4 DISCONNECT AND REMOVE EXISTING WATER PIPING AS INDICATED. (TYPICAL)
  - 5 PROVIDE NEW BRANCH CIRCUIT AND TERMINATE AT NEW, EC PROVIDED, 20A-1P CB IN PANEL BP21.
  - 6 NEW COPPER PIPE SHALL BE INSTALLED UNDER THE BASE BID. THE EXISTING GALVANIZED STEEL PIPE SHALL BE REMOVED AFTER THE NEW COPPER PIPE IS INSTALLED. THE CHANGEOVER SHALL BE PHASED FOR MINIMUM DOWNTIME AND THE ROUTING, PHASING AND FINAL CONNECTIONS FOR THE NEW LINE SHALL BE SUBMITTED TO THE VA ENGINEER FOR REVIEW AND APPROVAL PRIOR TO CONSTRUCTION. DEDUCT ALTERNATE #2 SHALL DELETE THE INSTALLATION OF THE NEW COPPER PIPE AND LEAVE THE EXISTING GALVANIZED STEEL PIPE IN SERVICE.
  - 7 UNDER DEDUCT ALTERNATE #3 DELETE HOT, COLD AND HOT WATER RETURN PIPING.



**NOTES**

SCALE: 1/8" = 1'

AREA OF WORK

<b>BID DOCUMENTS</b> AMENDMENT #6 AMENDMENT #9	6-24-15 3-25-16 4-22-16	<b>CONSULTANTS</b> MEP ENGINEERING <b>H.F. LENZ COMPANY</b> 1407 Scalp Avenue   Johnstown, PA 15904   (814) 269-9300	<b>ARCHITECT</b>	<b>Drawing Title:</b> BUILDING 1 SOUTH PIPE BASEMENT PLUMBING PLAN	<b>Project Title:</b> Domestic Water Piping System Repairs	<b>Project Number:</b> Building Number: 1	<b>Office of</b> Construction and Facilities Management Department of Veterans Affairs
<b>Revisions:</b>	<b>Date:</b>			<b>Approved:</b>	<b>Location:</b> Philadelphia, Pennsylvania	<b>Drawing Number:</b> P1-1	
					<b>Date:</b> 6/24/15	<b>Checked By:</b> TME	<b>Drawn By:</b> JLJ