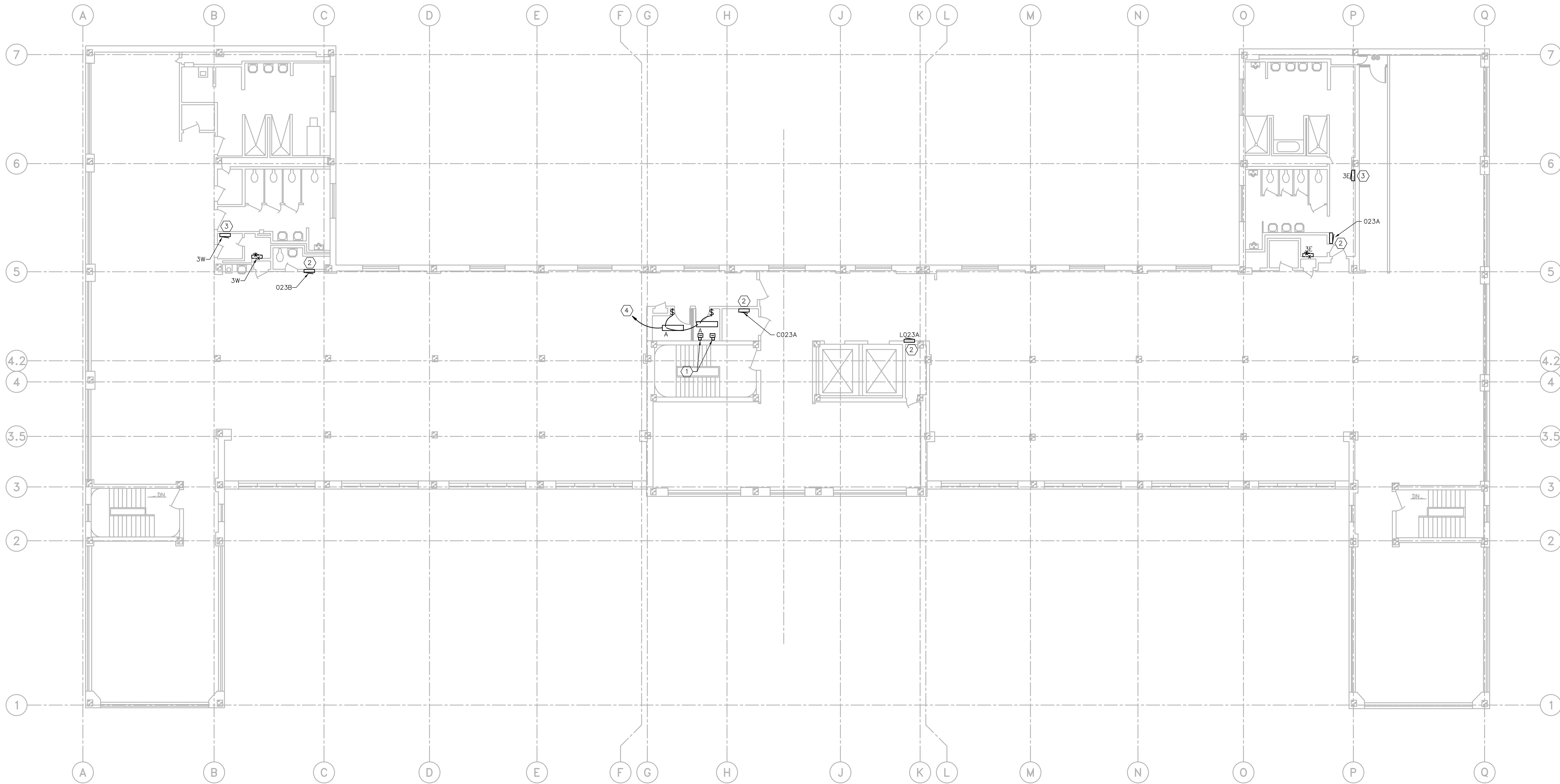


GENERAL NOTES:	NOTES BY SYMBOL: "□"
1. REFER TO SHEET E001 FOR GENERAL NOTES AND SYMBOL LEGEND.	1. PROVIDE 800A BUS RISERS AT 208V, 3-PHASE, 4-WIRE PER RISER DIAGRAM ON SHEET E301. PROVIDE BUS PLUG DISCONNECTS PER RISER DIAGRAM ON SHEET E301.
2. REFER TO RISER DIAGRAMS FOR ADDITIONAL INFORMATION.	2. REPLACE PANELBOARD IN PLACE. REFER TO RISER DIAGRAMS FOR ADDITIONAL INFORMATION.
	3. PROVIDE REPLACEMENT PANELBOARD AT LOCATION SHOWN. RELOCATE EXISTING CIRCUITS RETAINED FROM DEMOLITION TO THIS LOCATION.
	4. REMOVE EXISTING LIGHTING IN SPACE AND RECONNECT LIGHTING SHOWN TO EXISTING LIGHTING CIRCUIT. COORDINATE MOUNTING WITH EXISTING FIELD CONDITIONS. FIXTURE SHALL BE NO LOWER THAN 8' AFF.



E203 FLOOR PLAN – THIRD FLOOR ELECTRICAL
SCALE: 1/8"=1'-0"

PLAN NORTH
TRUE NORTH

Revisions Date				Seal	Seal	Drawing Title FLOOR PLAN – THIRD FLOOR ELECTRICAL	Project Title V.A. BONHAM, TX BUILDING 2 ELECTRICAL UPGRADES	Date 10/27/14		VANTHCS Dallas, Texas		
						Approved: Area Project Manager	Building Number 2	Checked SLT			Drawn JRH	Project No. 54944-11-102
						Location 1201 East Ninth Street Bonham, Texas 75418		Drawing No. E203			Dwg. of	