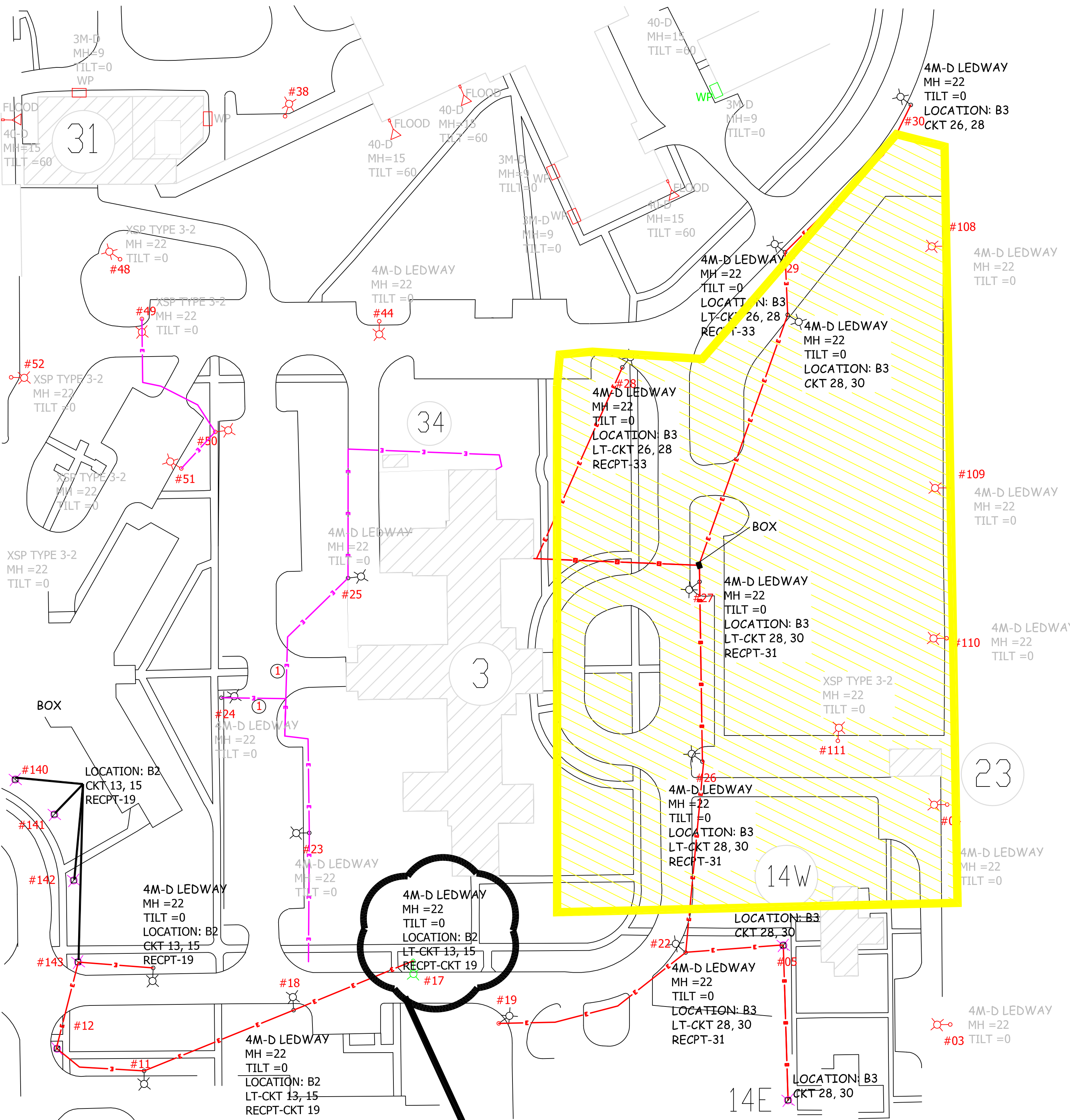
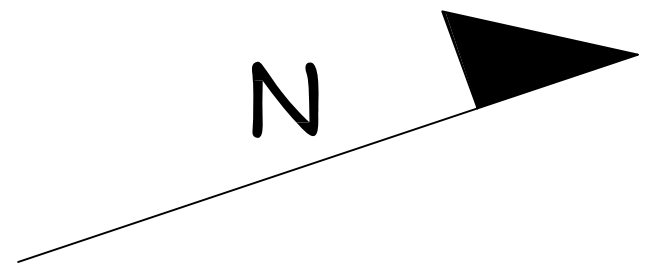


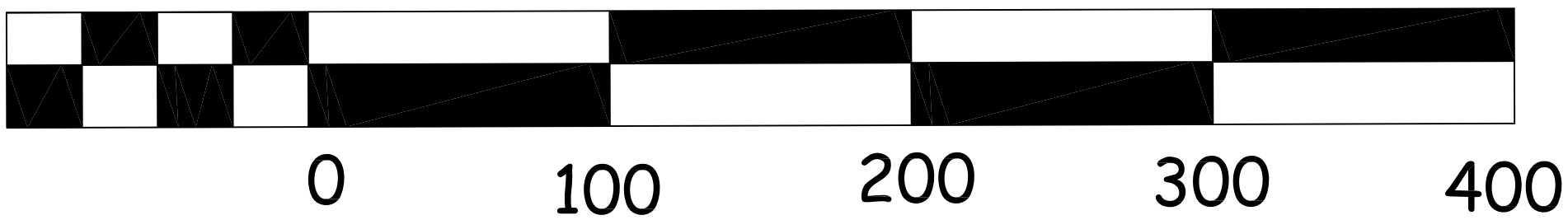
LUMINAIRE SCHEDULE								
SYMBOL	QTY	LABEL	ARRANGEMENT	LUMENS/LAMP	LLF	DESCRIPTION AND/OR EQUIVALENT FIXTURES TO BE INSTALLED.	LUM. WATTS	TOTAL WATTS
	2	4M-D LEDWAY	SINGLE	8463	0.920	STR-LWY-EM-HT-05-D-UL-SV-700 (50-LED, TYPE 4M, SERIES D, 700 mA, LEDWAY	116	1624
	N/A	5M-D LEDWAY	BACK - BACK	8903	0.920	STR-LWY-EM-HT-05-D-UL-SV-700 (50-LED, TYPE 5M, SERIES D, 700 mA, LEDWAY	116	2088
	N/A	3M-D LEDWAY	SINGLE	5079	0.920	SEC-EDG-3M-WM-04-D-UL-SV-525 (40-LED, TYPE 3M, SERIES D, 525 mA, EDGE SECURITY)	70	2310
	N/A	5M-DR LEDWAY	SINGLE	2097	0.920	PMW-EDG-5M-P3-02-D-UL-BK-525 (20-LED, TYPE 5M, SERIES D, 525 mA, EDGE PATHWAY)	34	1598
	N/A	40-D LEDWAY	SINGLE	6883	0.900	ARE-EDR-5M-RE-04-DOUL-SV-700 (40-LED, TYPE 5M, SERIES D, 700 mA, EDGE ROUND)	93	279
	N/A	40-D LEDWAY	SINGLE	9271	0.920	FLD-EDG-60-AA-04-D-UL-SV-525 (60-LED, 40 OPTIC, SERIES D, 525 mA, EDGE FLOOD)	102	1530
	N/A	-----	SINGLE	-----	-----	SEE DRAWING E-102	-----	-----



- ELECTRICAL GROUND BOX
- FUTURE CONSTRUCTION
- WALL PACK TO BE INTALLED
- EXTERIOR LIGHT-INSTALL NEW HEAD
- FIXTURE AND/OR LIGHT POLE LOCATION TO BE INSTALLED
- EXTERIOR LIGHT DOUBLE-INSTALL NEW HEAD
- FLOOD
- FIXTURE AND LIGHT POLE (8' HT)
- FLAG POLE LIGHTS
- GAS LANTERN TYPE
- ARM MOUNTED ON ARM
- EXISTING FIXTURE
- EXISTING WIRING FEED
- NEW WIRING FEED

PANEL LEGEND

Bldg -2 Panel-2LIAA	120 / 208 V	Circuit	Amp
		#13	7.3
		#15	7.5
		#17	6.2
Pole Recept.		#19	
		#21	
		#23	



CONTRACTOR TO REMOVE EXISTING LP #17 FOR NEW WORKS. FOR NEW EXTERIOR LIGHT POLES, POWER SHALL BE RAN FROM WHERE LP #17 CURRENTLY LOCATED.

Revision	Date
Revision 1	6/20/2016

PROJECT ADDRESS
W.G. (BILL) HEFNER VA MEDICAL CENTER
1601 BRENNER AVE.
SALISBURY, NC 28144

RECOMMEND APPROVAL			
REQUESTER	Date	CHIEF OF STAFF	Date
CHIEF OF SERVICE	Date	ASSOC. DIR. FOR OPERATIONS	Date
ASSOC. DIR. PATIENT CARE SVC.	Date	ASSOC. DIR. FOR OPERATIONS	Date
APPROVAL BY:		Date	
MEDICAL CENTER DIRECTOR			

Drawing Title	EXTERIOR LIGHTS EXISTING
Approved: Safety Manager/M&O Supervisor	
Approved:Chief of Facilities Management Svr.	

Project Title	ROAD ACCESS MODIFICATIONS AT BLDG 3
Building Number	BUILDING # 03
Checked	BLF
Drawn	NJ
Location	W.G.(Bill) Hefner Medical Center 1601 Brenner Ave Salisbury NC 28144

Date	18 ARP 2016
Project No.	669-16-302
DRAWING NO.	E-101
DWG.	6 OF 8



Department of Veterans Affairs