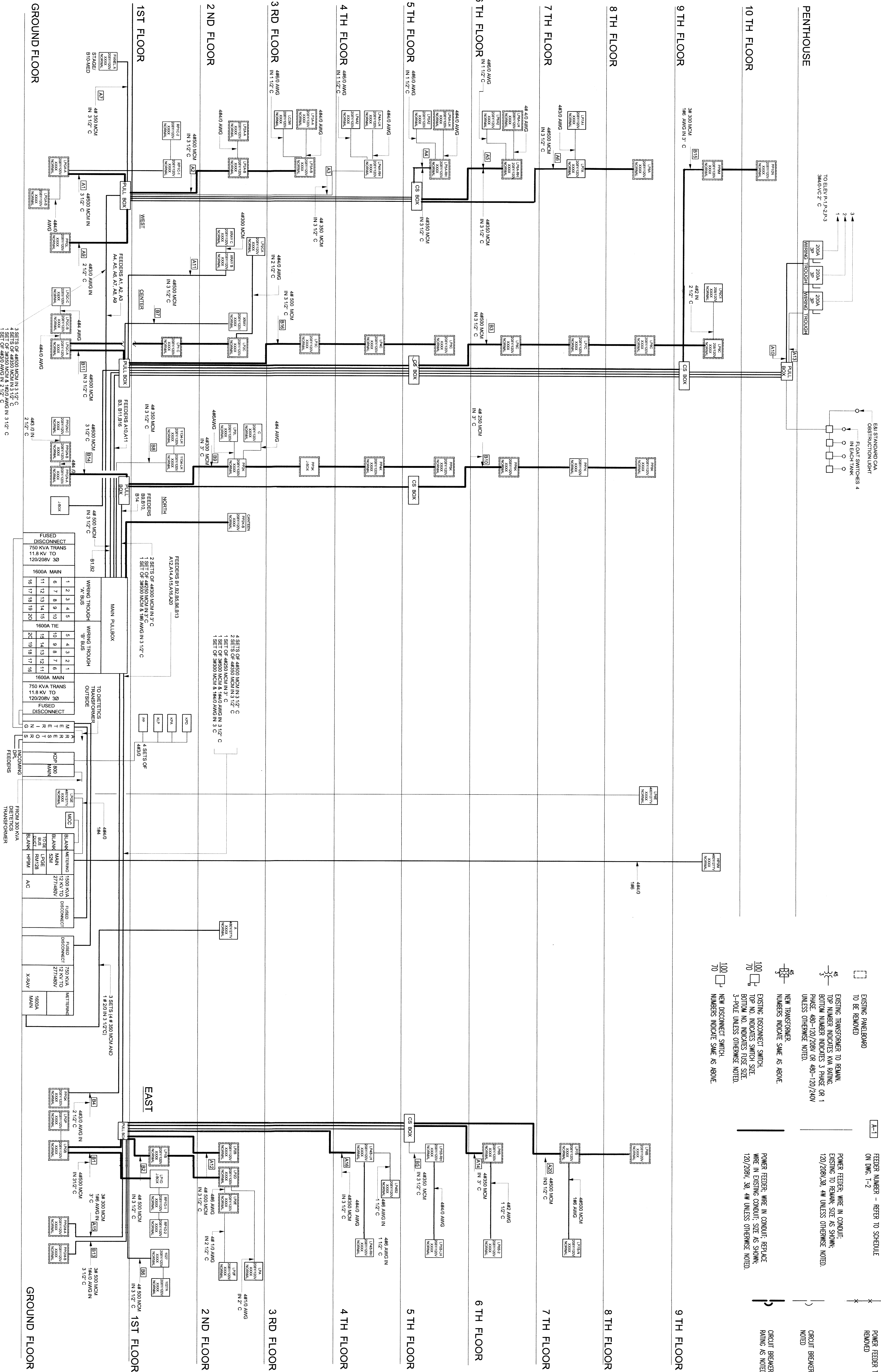


DRAWING NOTE:

1. REFER TO DRAWING T1 AND T2 FOR ADDITIONAL NOTES, ABBREVIATIONS, SYMBOLS AND LEGENDS.
2. REFER TO DRAWING E11 FOR MAIN FEEDER SCHEDULE
3. REFER TO DRAWINGS E16 THROUGH E19 FOR ONE-LINE DIAGRAMS
4. RISER DIAGRAMS ARE INCOMPLETE. SEE ONE-LINE DIAGRAMS FOR ADDITIONAL PANELS.

LEGEND

- NEW PANELBOARD AND BACKBOX
- NEW PANELBOARD INTERIOR IN EXISTING BACKBOX
- EXISTING PANELBOARD TO REMAIN
- EXISTING PANELBOARD TO BE REMOVED
- EXISTING TRANSFORMER TO REMAIN. TOP NUMBER INDICATES KVA RATING. BOTTOM NUMBER INDICATES 3 PHASE OR 1 PHASE. 480-120/208V OR 480-120/240V UNLESS OTHERWISE NOTED.
- NEW TRANSFORMER. NUMBERS INDICATE SAME AS ABOVE.
- EXISTING DISCONNECT SWITCH. TOP NO. INDICATES SWITCH SIZE. BOTTOM NO. INDICATES FUSE SIZE. 3-POLE UNLESS OTHERWISE NOTED.
- NEW DISCONNECT SWITCH. NUMBERS INDICATE SAME AS ABOVE.
- AUTOMATIC TRANSFER SWITCH, 3 POLE, RATING AS NOTED
- CABLE TAP IN JUNCTION BOX
- CIRCUIT MONITOR (SHOWN ON ONE-LINE DIAGRAMS) (BID ALTERNATE - SEE SPECIFICATIONS) FEEDER NUMBER - REFER TO SCHEDULE ON DWG. 1-2
- POWER FEEDER, WIRE IN CONDUIT. PROVIDE NEW WIRE AND CONDUIT, SIZE AS SHOWN. 120/208V, 3Ø, 4W UNLESS OTHERWISE NOTED.
- CIRCUIT BREAKER, EXISTING. RATING AS NOTED
- POWER FEEDER, WIRE IN CONDUIT. REPLACE WIRE IN EXISTING CONDUIT, SIZE AS SHOWN. 120/208V, 3Ø, 4W UNLESS OTHERWISE NOTED.



Revisions

Date

Professional Seal

DESIGN CONSULTANT:
DCS INFRASTRUCTURE, LLC
MOUNT HOLLY, NJ

Drawing Title
ONE LINE RISER DIAGRAM
NORMAL POWER

Project Title
UPGRADE SECONDARY
ELECTRICAL DEFICIENCIES

Approved:

Building Number
01

Location
VAMC WILMINGTON
DELAWARE

Date
10 JULY 09

Project No.
460-08-104

Drawing No.
E-112

VAMC WILMINGTON

VA Department of Veterans Affairs

F

E

D

C

B

A