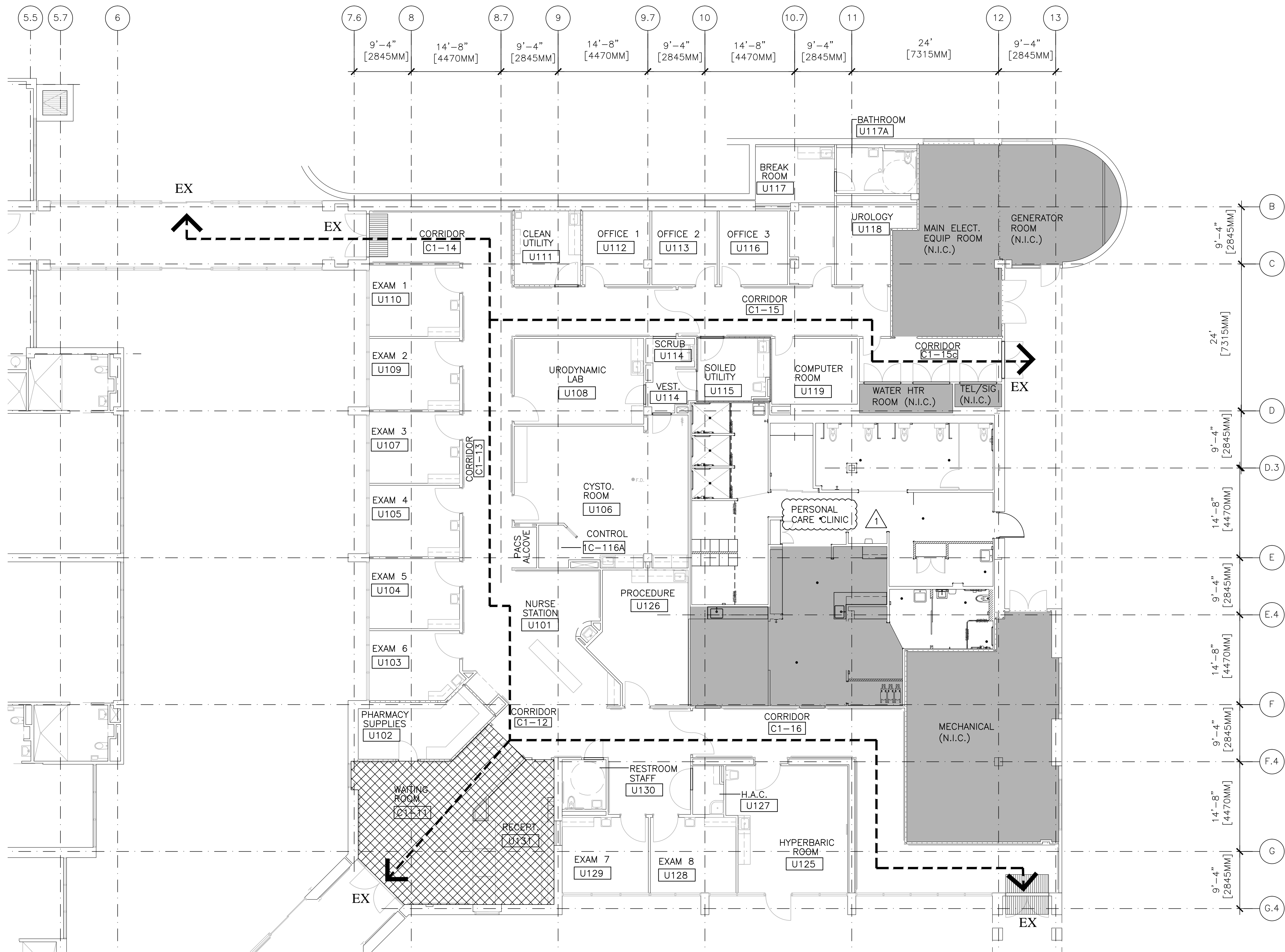


three inches = one foot
one and one half inches = one foot
one inch = one foot
three quarters inch = one foot
one half inch = one foot
three eighths inch = one foot
one quarter inch = one foot
one eighth inch = one foot



GENERAL NOTES

1. PROVIDE AND MAINTAIN CONTINUOUS AND UNOBSTRUCTED EXIT TO EXISTING EXIT CORRIDORS AND EXIT PATHS AT ALL TIMES AND MAINTAIN THE REQUIRED EXITS FOR ALL OCCUPIED AREAS OF THE BUILDING THROUGHOUT THE DEMOLITION AND CONSTRUCTION.

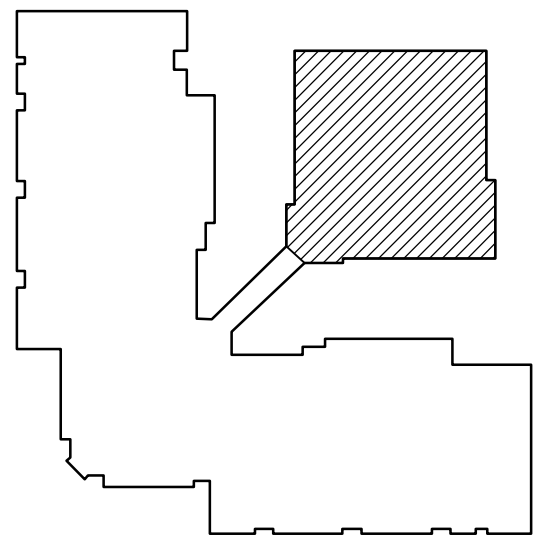
SYMBOLS LIST

- 2 HOUR FIREWALL
- 1 HOUR FIREWALL
- 2 HOUR FIRE/SMOKEWALL
- 1 HOUR FIRE/SMOKEWALL
- 30 MINUTE SMOKE BARRIER
- SMOKE RESISTIVE HAZARDOUS AREA
- HORIZONTAL EXIT PASSAGEWAY
- EXIT
- EXIT PASSAGEWAY
- LINEN CHUTE
- SUITE DESIGNATIONS
- AREA OPEN TO CORRIDOR - WITH SMOKE DETECTION
- AREA OPEN TO CORRIDOR - NO SMOKE DETECTION REQUIRED
- HORIZONTAL BARRIER

PLAN LEGEND

- PATH OF EGRESS
- NIC

KEYPLAN



NOTE: FIRE LIFE SAFETY INFORMATION IS BASED ON STATEMENT OF CONDITIONS PROVIDED BY VETERANS ADMINISTRATION. CONTRACTOR TO FIELD VERIFY

EGRESS AND FIRE SAFETY PLAN

SCALE 1/8" = 1'-0"

35% SCHEMATIC SUBMISSION	07/12/13
85% DESIGN DEVELOPMENT	11/19/13
100% CONSTRUCTION DOCUMENTS	03/06/14
REVISION 1	06/20/16
Revisions	Date

CONSULTANTS:

ARCHITECT/ENGINEERS:



SRD
ARCHITECTS INC
ARCHITECTURE INTERIORS PROJECT MANAGEMENT

3920 E. CORONADO STREET, SUITE 201
ANAHEIM CALIFORNIA 92807
1000 S FREMONT AVE, UNIT 53,
BLDG. A1, SUITE 1218
ALHAMBRA CALIFORNIA 91803
www.SRDarchitectsinc.com
O: 714 688 0212 • 626 202 0546 • FAX: 714 688 0244

Drawing Title
**EGRESS AND FIRE SAFETY PLAN
- BUILDING 150 C**

Approved
CHIEF CONSTRUCTION MANAGEMENT/DESIGN SECTION
PROJECT ENGINEER

Project Title
**REPLACE FLOORING AND FINISHES
VARIOUS BUILDINGS**

Location
5901 EAST SEVENTH STREET
LONG BEACH, CA 90822

Date
03/06/14

Checked
S.D.

Drawn
M.K.

Project Number
600-13-116
Building Number
150 C

Drawing Number
150-GC-101
Dwg. 8 of 62

Office of
Construction
and Facilities
Management

Department of
Veterans Affairs

100% CONSTRUCTION DOCUMENTS