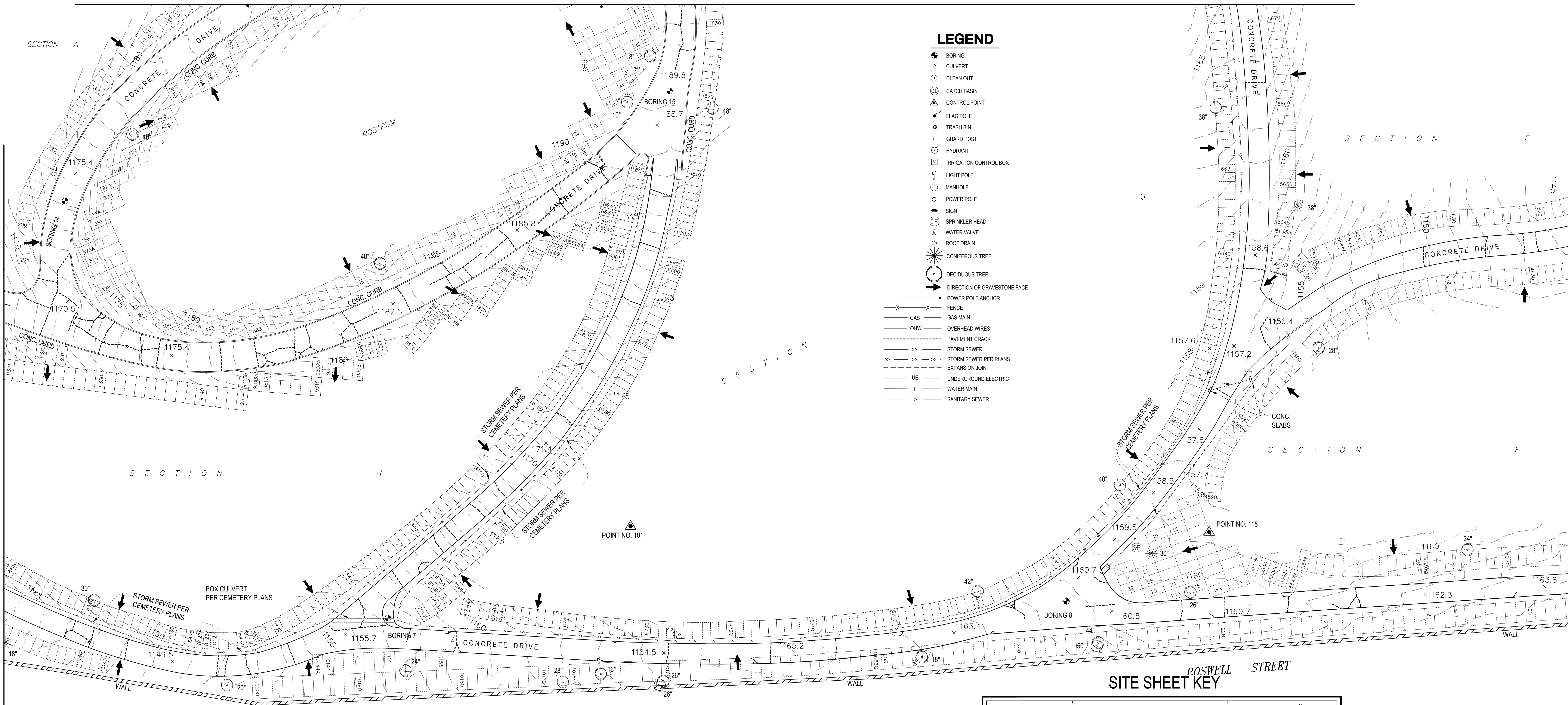


one eighth inch = one foot
one quarter inch = one foot
one half inch = one foot
three eighths inch = one foot
three quarters inch = one foot
one inch = one foot
one and one half inches = one foot
two inches = one foot
three inches = one foot
three and one half inches = one foot
four inches = one foot
five inches = one foot
six inches = one foot
seven inches = one foot
eight inches = one foot
nine inches = one foot
ten inches = one foot
eleven inches = one foot
twelve inches = one foot
thirteen inches = one foot
fourteen inches = one foot
fifteen inches = one foot
sixteen inches = one foot
seventeen inches = one foot
eighteen inches = one foot
nineteen inches = one foot
twenty inches = one foot
twenty one inches = one foot
twenty two inches = one foot
twenty three inches = one foot
twenty four inches = one foot
twenty five inches = one foot
twenty six inches = one foot
twenty seven inches = one foot
twenty eight inches = one foot
twenty nine inches = one foot
thirty inches = one foot
thirty one inches = one foot
thirty two inches = one foot
thirty three inches = one foot
thirty four inches = one foot
thirty five inches = one foot
thirty six inches = one foot
thirty seven inches = one foot
thirty eight inches = one foot
thirty nine inches = one foot
forty inches = one foot
forty one inches = one foot
forty two inches = one foot
forty three inches = one foot
forty four inches = one foot
forty five inches = one foot
forty six inches = one foot
forty seven inches = one foot
forty eight inches = one foot
forty nine inches = one foot
fifty inches = one foot
fifty one inches = one foot
fifty two inches = one foot
fifty three inches = one foot
fifty four inches = one foot
fifty five inches = one foot
fifty six inches = one foot
fifty seven inches = one foot
fifty eight inches = one foot
fifty nine inches = one foot
sixty inches = one foot
sixty one inches = one foot
sixty two inches = one foot
sixty three inches = one foot
sixty four inches = one foot
sixty five inches = one foot
sixty six inches = one foot
sixty seven inches = one foot
sixty eight inches = one foot
sixty nine inches = one foot
seventy inches = one foot
seventy one inches = one foot
seventy two inches = one foot
seventy three inches = one foot
seventy four inches = one foot
seventy five inches = one foot
seventy six inches = one foot
seventy seven inches = one foot
seventy eight inches = one foot
seventy nine inches = one foot
eighty inches = one foot
eighty one inches = one foot
eighty two inches = one foot
eighty three inches = one foot
eighty four inches = one foot
eighty five inches = one foot
eighty six inches = one foot
eighty seven inches = one foot
eighty eight inches = one foot
eighty nine inches = one foot
ninety inches = one foot
ninety one inches = one foot
ninety two inches = one foot
ninety three inches = one foot
ninety four inches = one foot
ninety five inches = one foot
ninety six inches = one foot
ninety seven inches = one foot
ninety eight inches = one foot
ninety nine inches = one foot
one hundred inches = one foot

MATCH LINE G SEE SHEET B-1.07

MATCH LINE F SEE SHEET B-1.05

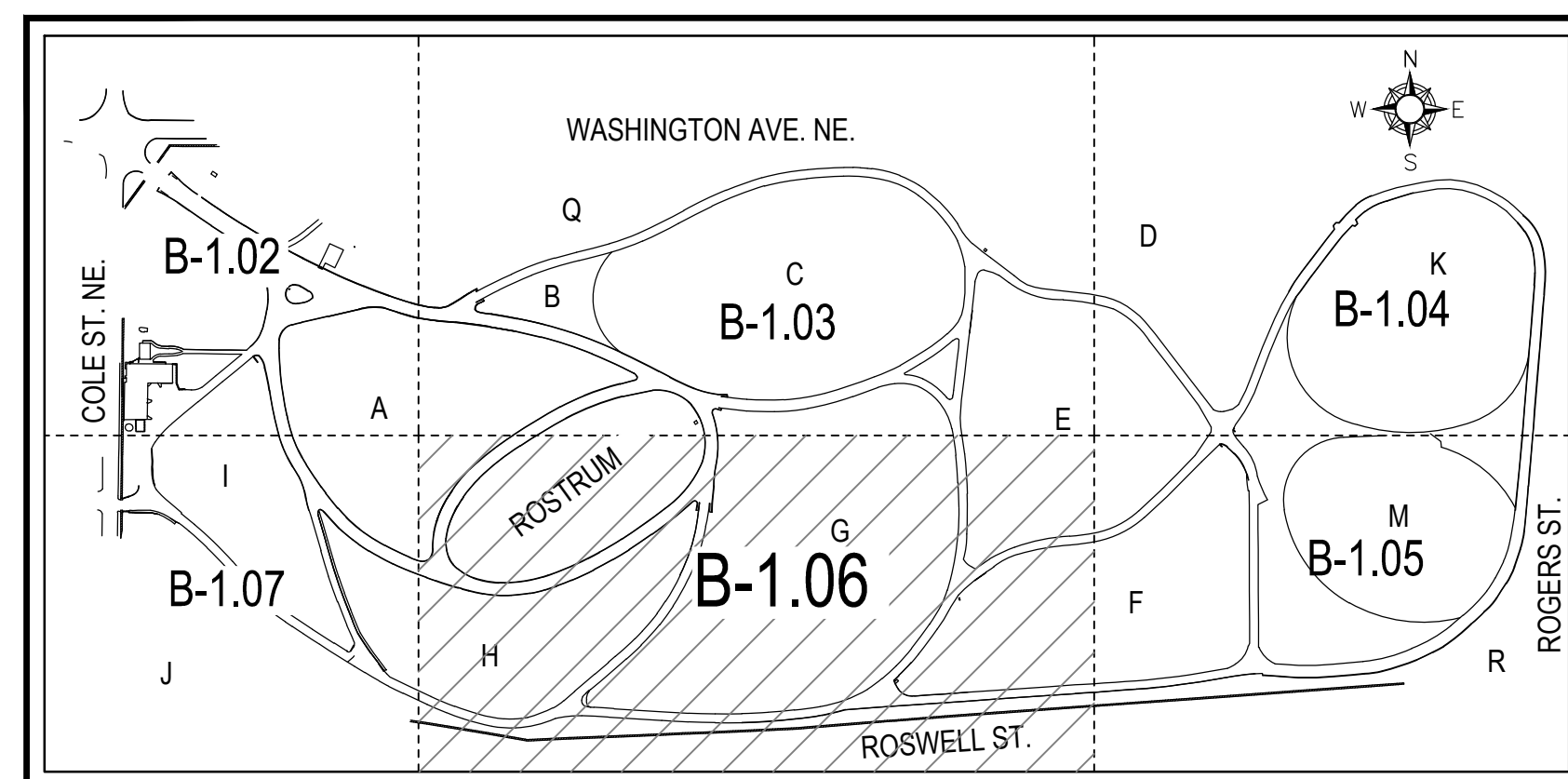
SEE SHEET B-1.03
MATCH LINE D



LEGEND

- BORING
- CULVERT
- CLEAN OUT
- CATCH BASIN
- CONTROL POINT
- FLAG POLE
- TRASH BIN
- GUARD POST
- HYDRANT
- IRRIGATION CONTROL BOX
- LIGHT POLE
- MANHOLE
- POWER POLE
- SIGN
- SPRINKLER HEAD
- WATER VALVE
- ROOF DRAIN
- CONIFEROUS TREE
- DECIDUOUS TREE
- DIRECTION OF GRAVESTONE FACE
- POWER POLE ANCHOR
- FENCE
- GAS MAIN
- OVERHEAD WIRES
- PAVEMENT CRACK
- STORM SEWER
- STORM SEWER PER PLANS
- EXPANSION JOINT
- UNDERGROUND ELECTRIC
- WATER MAIN
- SANITARY SEWER

SITE SHEET KEY



ASBULT DRAWINGS - SEPTEMBER 10, 2015

CONSULTANTS: Terracon Terracon 2855 Premiere Pkwy, Ste. C Duluth, GA 30097 (770) 623-0755 tel (770) 623-9628 fax www.terracon.com		ARCHITECT/ENGINEERS: ANDERSON ENGINEERING ENGINEERING • ARCHITECTURE • LAND SURVEYING ENVIRONMENTAL SERVICES • LANDSCAPE ARCHITECTURE Anderson Engineering of Minnesota, LLC 13605 1st Avenue North Suite 100 Plymouth, MN 55441 763-412-4000 (o) 763-412-4090 (f) www.ae-mn.com		Project Title ROADWAY AND STORM DRAINAGE REPLACEMENT Location MARIETTA NATIONAL CEMETERY MARIETTA, GEORGIA Date JANUARY 31, 2014 Checked TGMB Drawn THPH		Drawing Title SITE SURVEY Approved: Project Director		Project Number 859CM3020 Building Number Drawing Number B-106 Dwg. 9 of 58		National Cemetery Administration Department of Veterans Affairs	
ASBULT DRAWINGS Revisions: 9-10-15 Date											