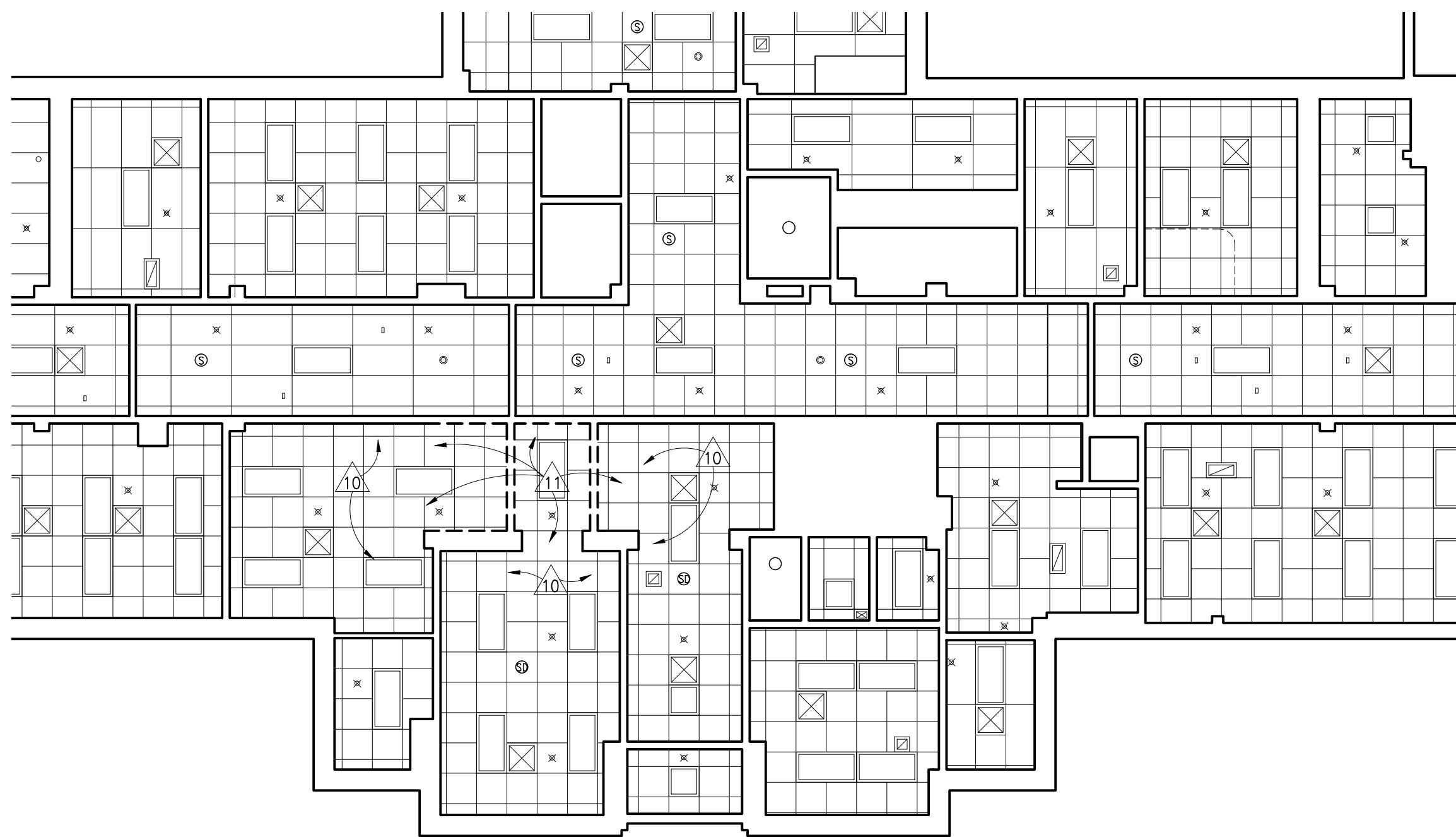
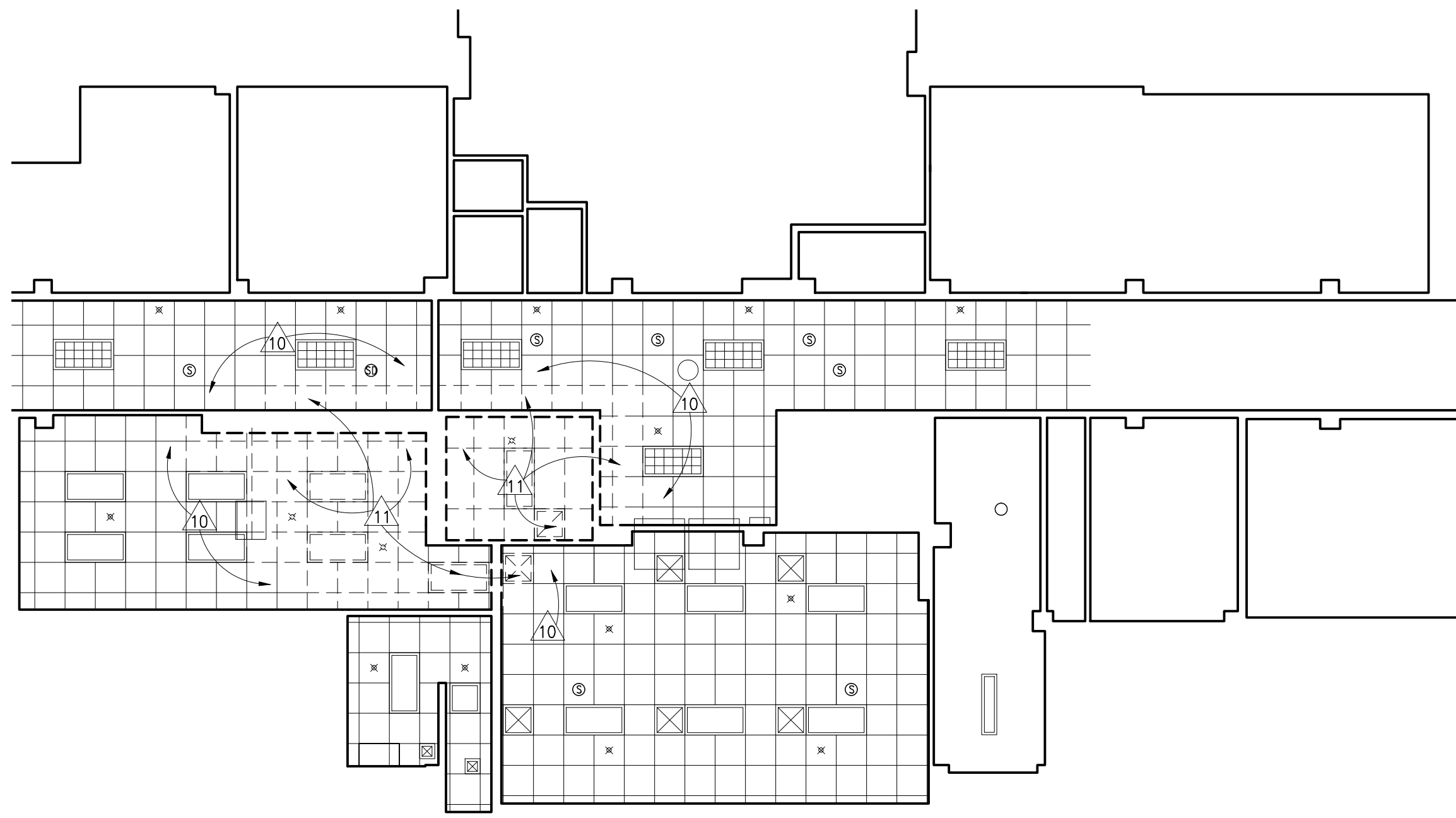


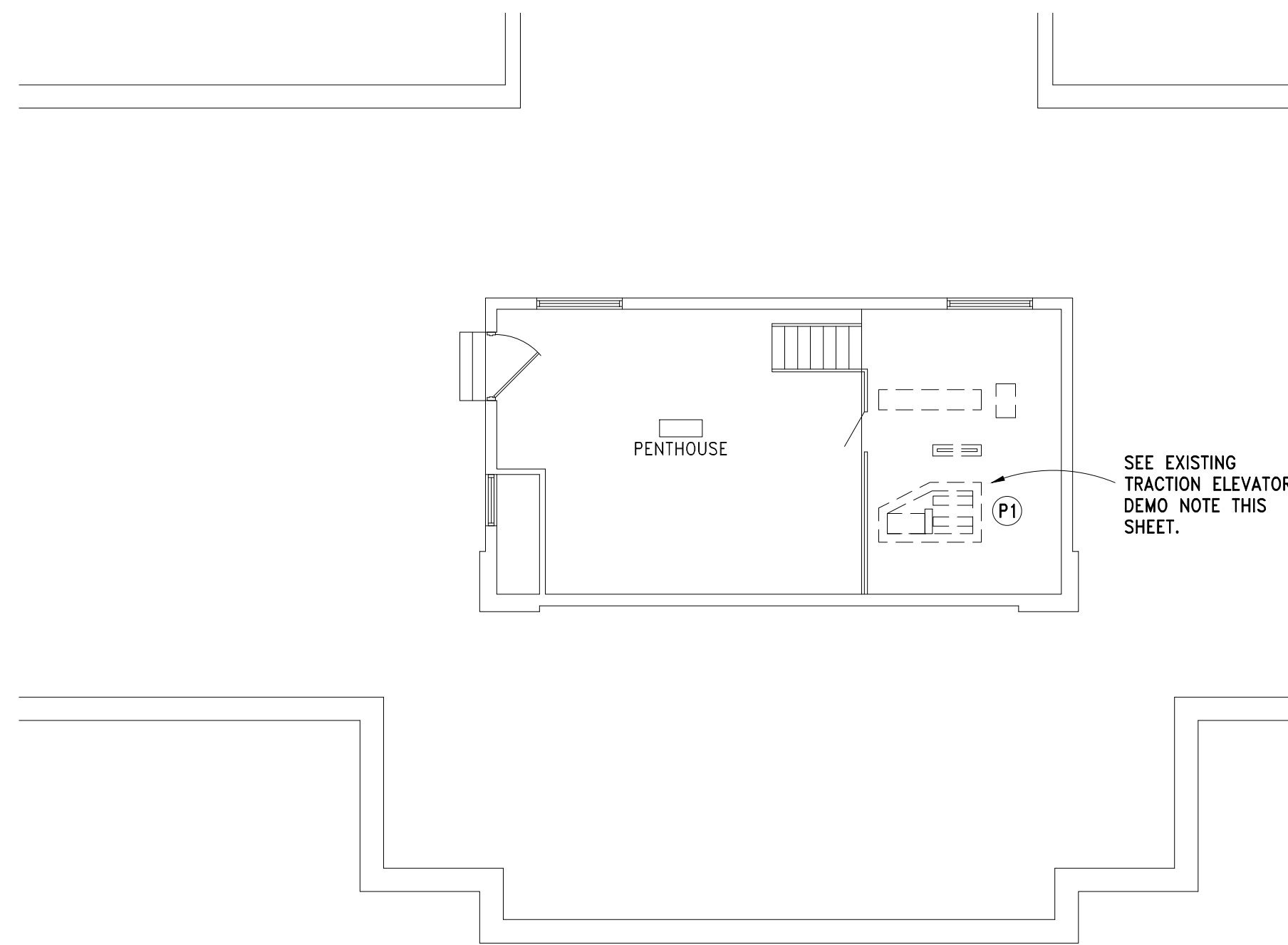
SECOND FLOOR REFLECTED CEILING DEMOLITION PLAN
1/8"=1'-0"



FIRST FLOOR REFLECTED CEILING DEMOLITION PLAN
1/8"=1'-0"



BASEMENT REFLECTED CEILING DEMOLITION PLAN
1/8"=1'-0"



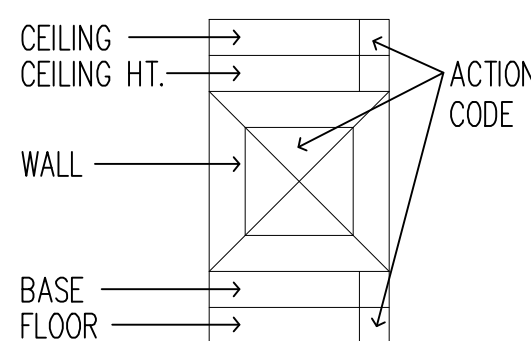
ATTIC DEMOLITION PLAN
1/8"=1'-0"

CEILING LEGEND:

- 2'-0" x 4'-0" CEILING GRID, INSTALL AT 8'-0" A.F.F. UNLESS NOTED OTHERWISE.
- 2'-0" x 2'-0" CEILING GRID, INSTALL AT 8'-0" A.F.F. UNLESS NOTED OTHERWISE.
- RECESSED FLUORESCENT LIGHT FIXTURE
- DOWN LIGHT FIXTURE
- SUPPLY GRILLE, CEILING DIFFUSER
- RETURN AIR/EXHAUST GRILLE
- SMOKE DETECTOR (SEE ELECTRICAL DRAWINGS)
- SPEAKER (SEE ELECTRICAL DRAWINGS)
- EXIT (SEE ELECTRICAL DRAWINGS)
- CEILING DEMOLITION

EXISTING FINISH LEGEND

- ACT - ACOUSTIC CEILING TILE
- BDR - WALLPAPER BORDER
- BLK - GLAZED MASONRY UNIT
- BRK - BRICK
- CMU - CONCRETE MASONRY UNIT
- CONC - CONCRETE
- CPT - CARPET
- C.T. - CERAMIC TILE
- EXPS - EXPOSED STRUCTURE
- GWB - GYPSUM WALL BOARD
- P - PAINT
- PL - PLASTER
- SCU - STRUCTURAL CLAY TILE UNIT
- TT - TERRAZZO BASE AND BORDER
- VCT - VINYL COMPOSITE TILE
- VN - VINYL BASE
- VWC - VINYL WALL COVERING
- WNS - WAINSCOT

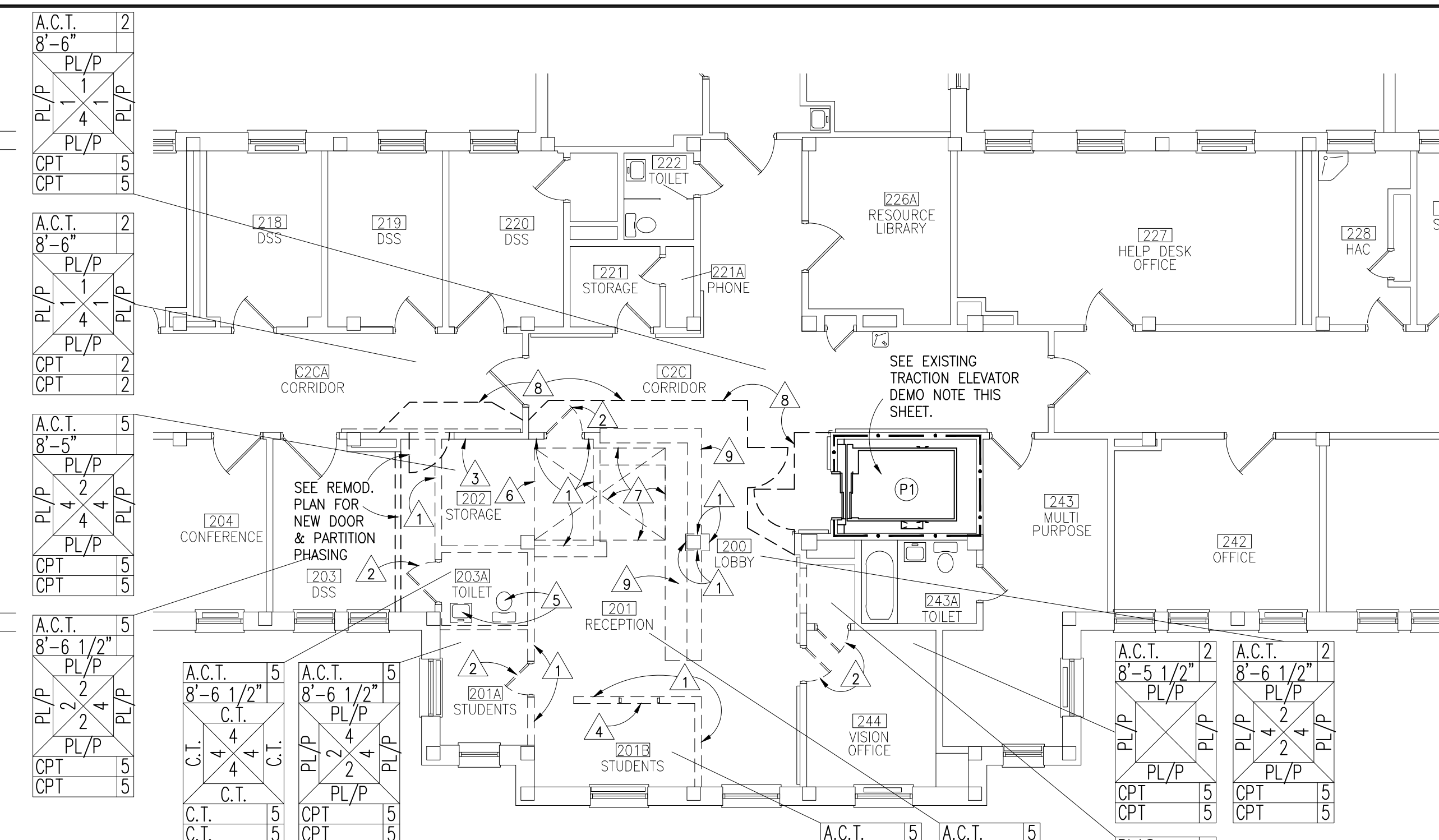


EXISTING TRACTION ELEVATOR DEMOLITION (P1):

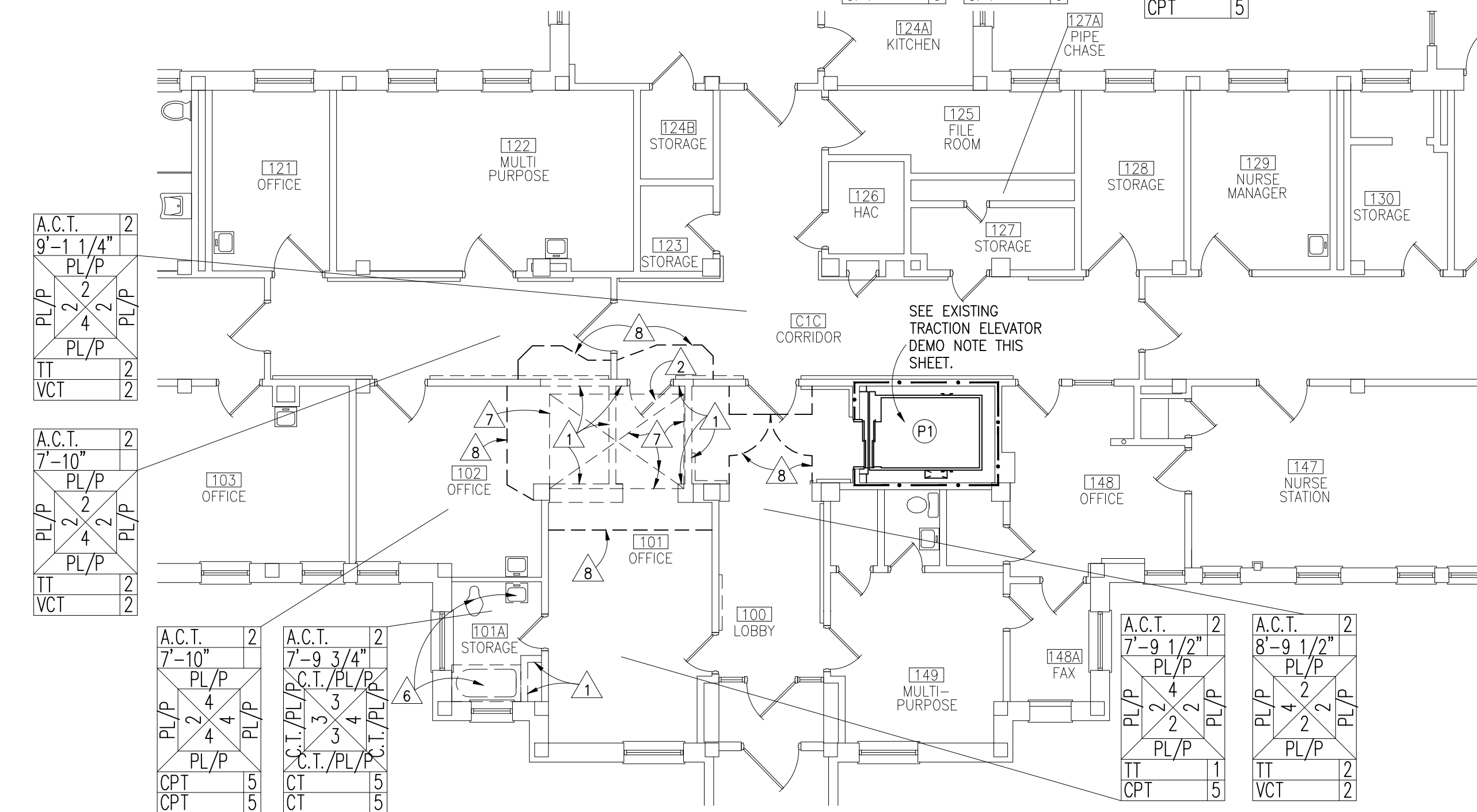
- NOTE: DEMOLITION SHALL NOT BEGIN UNTIL NEW HYDRAULIC ELEVATOR AND SHAFT HAVE BEEN COMPLETED AND ACCEPTED AND IN CONTINUAL SERVICE FOR MINIMUM OF ONE (1) WEEK.
- (P1) REMOVE ALL EXISTING TRACTION ELEVATOR EQUIPMENT FROM MACHINE ROOM. REMOVE HOISTWAY EQUIPMENT, INCLUDING CAB, CAR SLING, SAFETIES, PIT EQUIPMENT, HOISTWAY DOORS AND HARDWARE. REMOVE CALL STATIONS AND HALL LANTERNS. EXISTING SHEAVE BEAMS, MAIN GUIDE RAILS AND BRACKETS REMAIN FOR REUSE. NOTE ALL WORK TO OCCUR AFTER ELEVATOR (P2) IS COMPLETE AND ACCEPTED AND IN CONTINUAL SERVICE FOR MINIMUM OF ONE (1) WEEK.

DEMOLITION NOTES LEGEND:

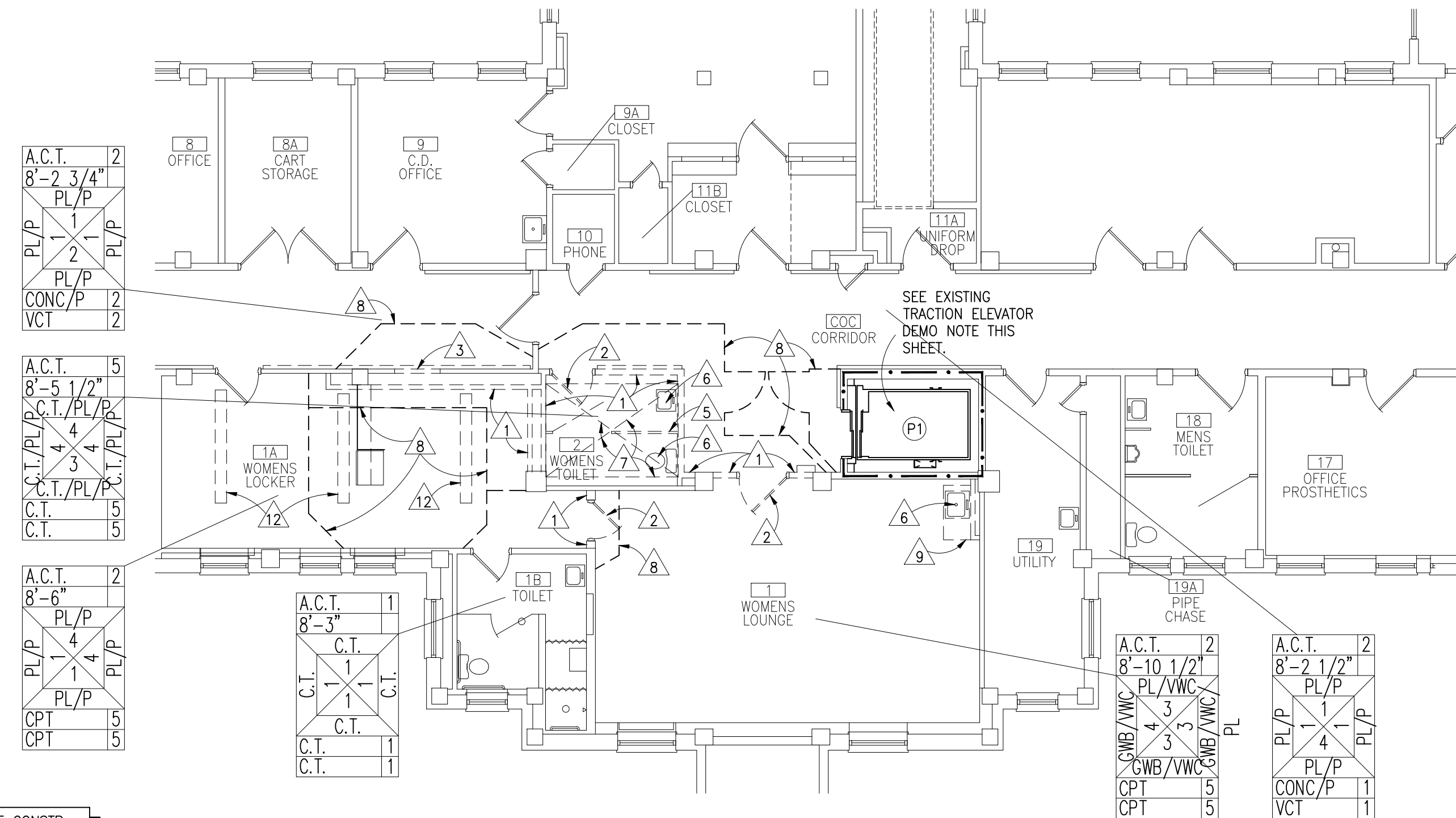
- REMOVE INTERIOR PARTITION.
- REMOVE DOOR, FRAME & HARDWARE.
- CUT NEW OPENING IN PARTITION. REFER TO REMODELING PLAN FOR SIZE AND LOCATION.
- REMOVE INTERIOR WINDOW AND FRAME.
- REMOVE TOILET/URINAL SCREEN.
- REMOVE PLUMBING FIXTURE. REFER TO MECHANICAL DRAWINGS.
- SAWCUT AND REMOVE CONCRETE PAN JOIST FLOOR FOR NEW ELEVATOR SHAFT.
- ERECT NON-COMBUSTIBLE TEMPORARY CONSTRUCTION BARRIER, AS REQUIRED TO PHASE WORK AND MAINTAIN FACILITY OPERATION. COORDINATE WITH COTR.
- REMOVE EXISTING MILLWORK.
- EXISTING CEILINGS REMAIN. REMOVE AND REINSTALL AS REQUIRED FOR MECHANICAL/ELECTRICAL WORK.
- REMOVE A.T. CEILING & SUSPENSION SYSTEM.
- EXISTING LOCKERS TO BE REMOVED BY VA AS REQUIRED FOR REMODELING. COORDINATE WITH COTR.



SECOND FLOOR DEMOLITION PLAN
1/8"=1'-0"



FIRST FLOOR DEMOLITION PLAN
1/8"=1'-0"



BASEMENT DEMOLITION PLAN
1/8"=1'-0"

NOTE: PHASE CONSTR. BARRIERS AND WORK TO ALLOW WOMENS FACILITIES 1, 1A & 1B TO REMAIN IN OPERATION TO GREATEST DEGREE POSSIBLE DURING CONSTRUCTION. COORDINATE WITH COTR.

I hereby certify that this plan specification, or report was prepared by me or under my direct supervision, and that I am duly Registered Architect under the laws of the State of Minnesota.

Date 2-28-2011, Reg. No. 21365

APPROVED SERVICE LINE DIRECTOR	DATE	APPROVED INFECTION CONTROL NURSE	DATE	DRAWING TITLE	PROJECT TITLE	DATE
APPROVED SERVICE LINE DIRECTOR	DATE	APPROVED PATIENT SAFETY	DATE	DEMOLITION PLANS	BUILDING 48 ELEVATOR	February 28, 2011
APPROVED PROJECTS SECTION MANAGER	DATE	APPROVED CHIEF OF POLICE	DATE	APPROVED CHIEF OF STAFF	BUILDING No. 48	REF. SCALE 1/8" = 1'-0"
APPROVED DIRECTOR FMS	DATE	APPROVED SAFETY MANAGER	DATE	APPROVED MEDICAL CENTER DIRECTOR	CHECKED BY RM	PROJECT No. 656-10-180
					BRWN MD	CAD FILE Demo_Plans
					LOCATION: VA MEDICAL CENTER, ST. CLOUD, MN 56303	DRAWING No. A1 DWG. 2 OF 12

