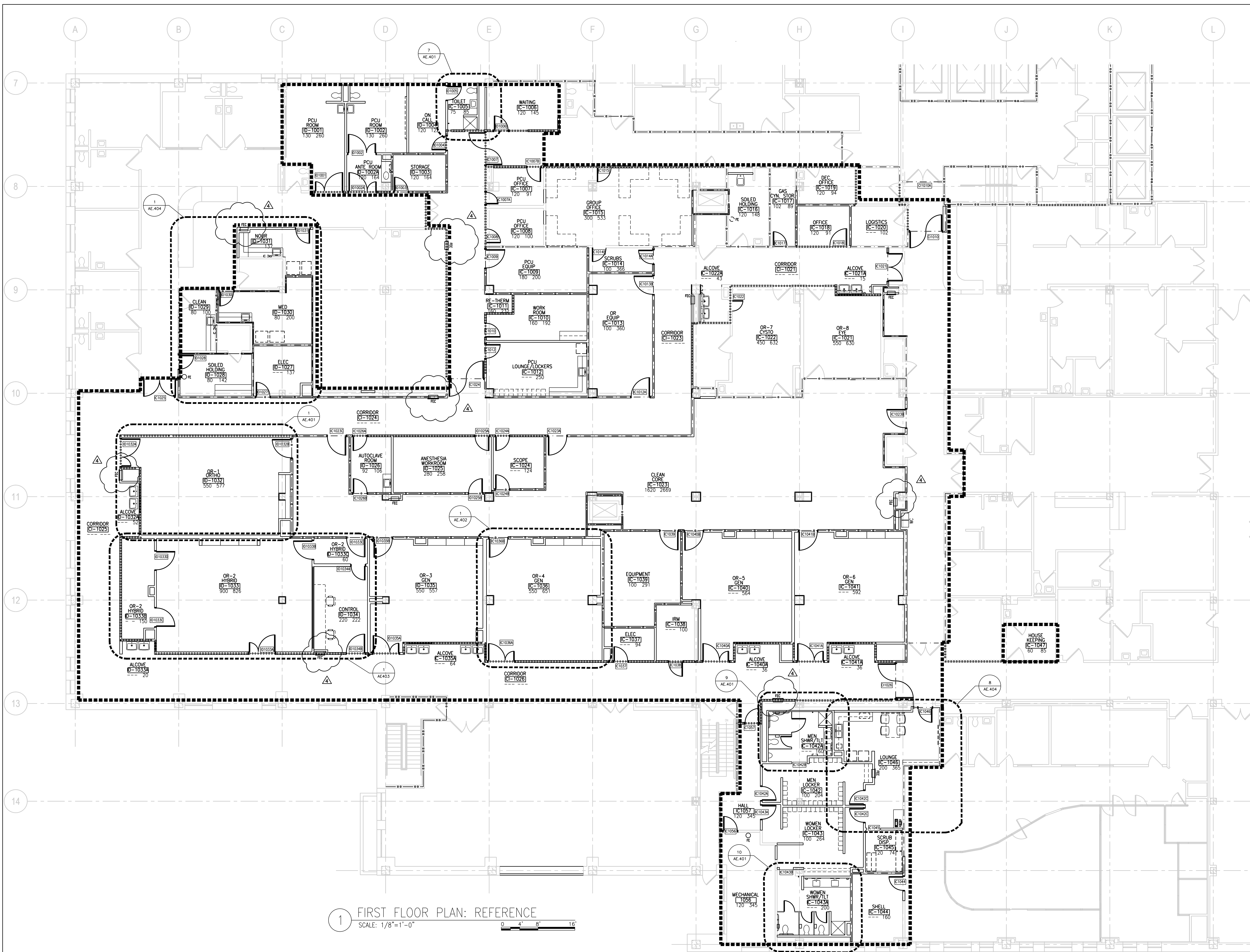


three inches = one foot  
one and one-half inches = one foot  
one inch = one foot  
three-quarters inch = one foot  
one-half inch = one foot  
three-eighths inch = one foot  
one-quarter inch = one foot  
one-eighth inch = one foot



1 FIRST FLOOR PLAN: REFERENCE  
SCALE: 1/8"=1'-0"

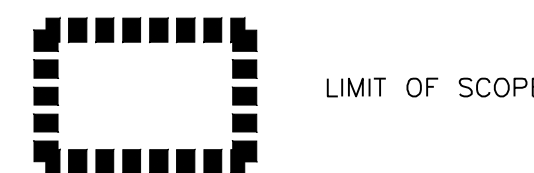
#### GENERAL NOTES

- LIMIT OF SCOPE DEPICTS THE GENERAL LIMIT OF ARCHITECTURAL WORK. MECHANICAL, ELECTRICAL AND PLUMBING WORK WILL EXCEED THIS LIMIT.
- PHASE 2 REMOVED FROM SCOPE OF WORK.

#### KEY NOTES

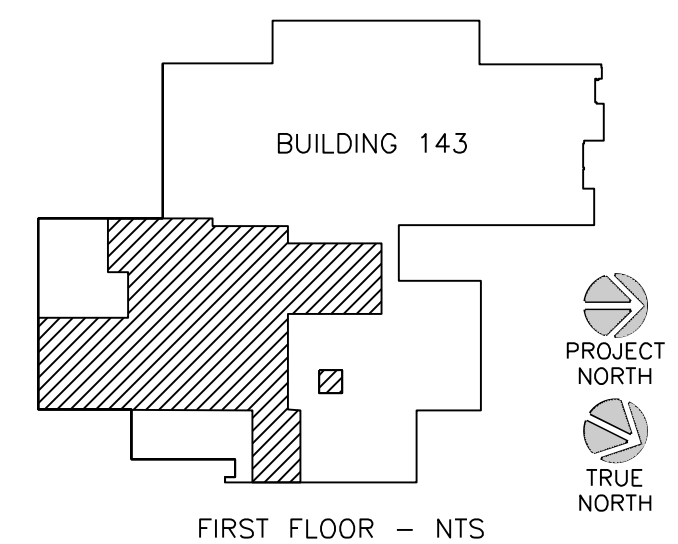
SYMBOL

#### LEGEND



LIMIT OF SCOPE

#### KEY PLAN



FIRST FLOOR - NTS

ADDENDUM 4	6/21/16
Revisions	Date

**Atrix**  
GROUP, INC.  
Atrix, plc  
102 3rd Avenue, NE  
PO Box 1629  
Hickory, NC 28603  
Phone: 828.315.9962  
Fax: 828.315.9964  
www.atrigroup.com

**FreemanWhite**  
CONSULTANTS  
8845 Red Oak Blvd.  
Charlotte, NC 28217-5593  
Phone: 704.523.2230  
Fax: 704.523.2235  
www.freemanwhite.com

**LeGrand**  
Engineering, Inc.  
215 Park Ave SE  
Aiken, SC 29801  
Phone: 803.502.0657  
Fax: 803.643.4648  
www.legrandengineering.com

**Quality Consulting**  
Engineers, plc  
1419 Deer Forest Drive  
Indian Land, SC 29707  
Phone: 803.207.5450  
Fax: 803.207.5450  
djonas@qualityconsultingengineers.com

**CHRIS D. RICHARDSON**  
ARCHITECT  
Lic. No. 0401014471  
12/1/15

Approved: Energy Engineer  
  
100% CONSTRUCTION  
DOCUMENTS

Approved: Safety Manager  
  
Approved: Infection Control Officer  
  
Approved: GEMS Coordinator

Approved: Service Chief  
  
Approved: Chief of Staff  
  
Approved: Associate Director

Drawing Title  
AE101  
FIRST FLOOR PLAN:  
REFERENCE  
  
Approved: Chief of Facility Management Svc.  
  
Approved: Medical Center Director

Project Title  
RENOVATE / EXPAND SURGICAL  
SUITE  
  
Building Number  
BUILDING 143  
  
Location  
VA MEDICAL CENTER, SALEM, VA 24153

Date  
12 / 10 / 2015  
  
Project No.  
658-15-104  
  
DRAWING NO.  
2591  
  
Dwg. Of

Veterans  
Affairs