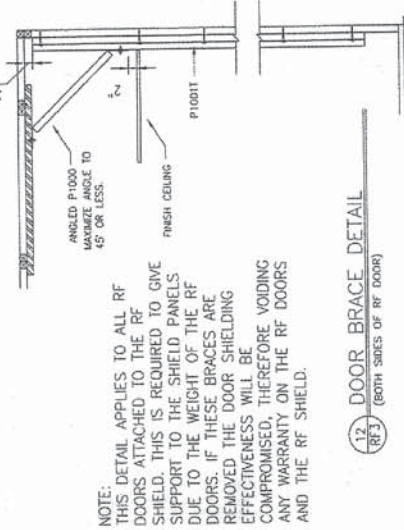
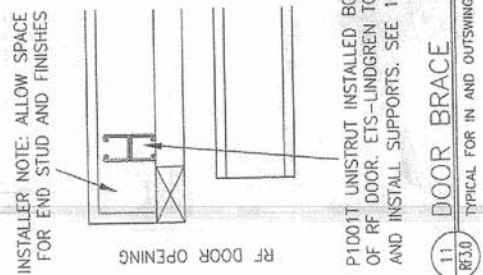
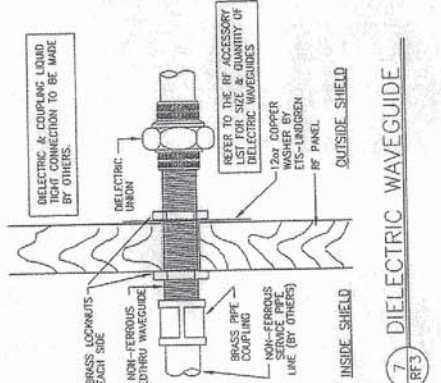
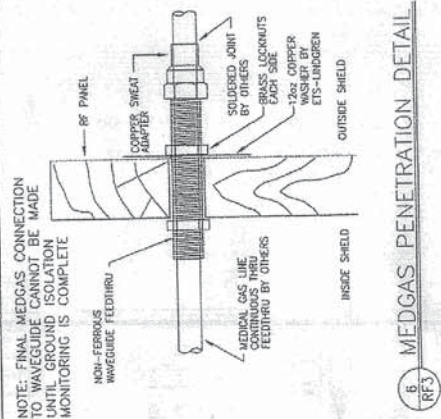
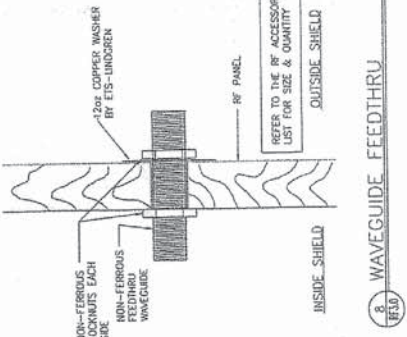
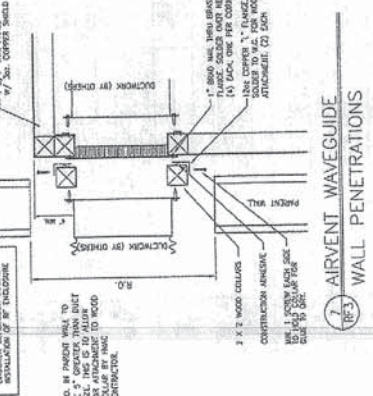
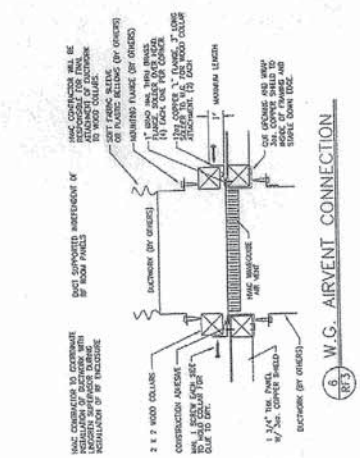
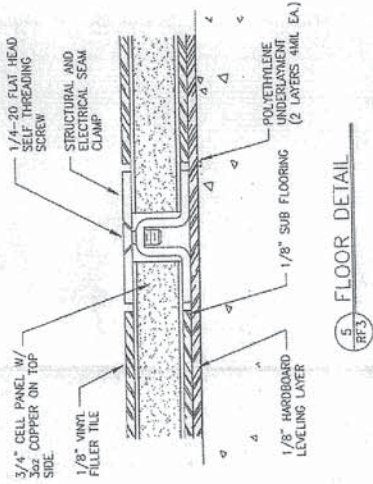
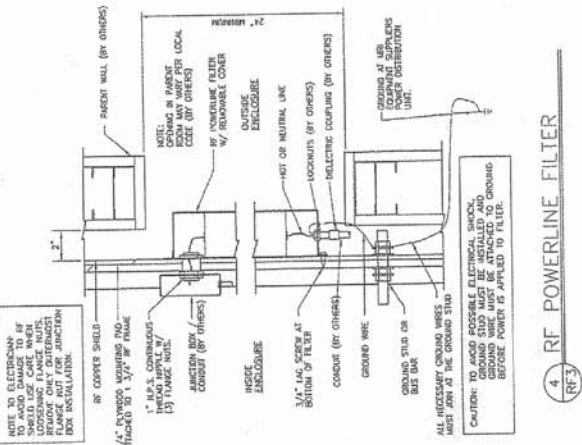
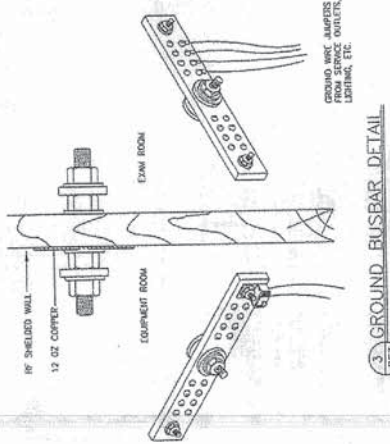
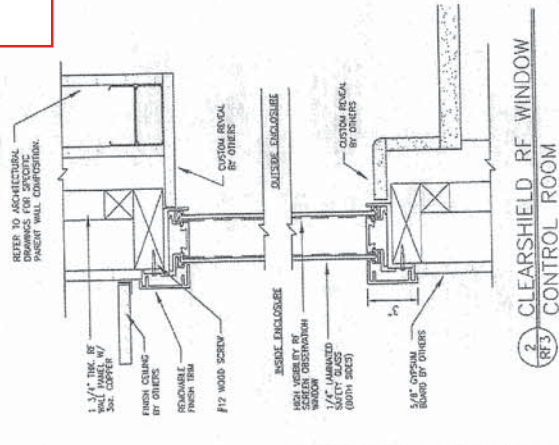
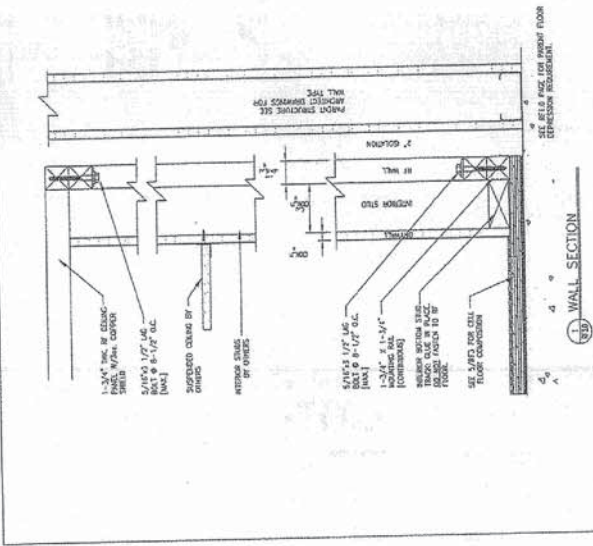


Philips room: This is a shop drawing of the existing shielding system. This is not intended to show new work.



6 RF3 MEDGAS PENETRATION DETAIL

7 RF3 DIELECTRIC WAVEGUIDE

11 RF3.0 DOOR BRACE TYPICAL FOR IN AND OUTSWING DOORS

12 RF3 DOOR BRACE DETAIL (BOTH SIDES OF RF DOOR)

5 RF3 FLOOR DETAIL

6 RF3 W.G. AIRVENT CONNECTION

7 RF3 AIRVENT WAVEGUIDE WALL PENETRATIONS

8 RF3 WAVEGUIDE FEEDTHRU

4 RF3 RF POWERLINE FILTER

3 RF3 GROUND BUSBAR DETAIL

CAUTION: TO AVOID POSSIBLE ELECTRICAL SHOCK, GROUND SHIELD MUST BE ATTACHED TO GROUND BEFORE POWER IS APPLIED TO FILTER.

NOTE: FINAL MEDGAS CONNECTION TO WAVEGUIDE CANNOT BE MADE UNTIL GROUND ISOLATION MONITORING IS COMPLETE

NOTE: THIS DETAIL APPLIES TO ALL RF DOORS ATTACHED TO THE RF SHIELD. THIS IS REQUIRED TO GIVE SUPPORT TO THE SHIELD PANELS DUE TO THE WEIGHT OF THE RF DOORS. IF THESE BRACES ARE REMOVED THE DOOR SHIELDING EFFECTIVENESS WILL BE COMPROMISED, THEREFORE VOIDING ANY WARRANTY ON THE RF DOORS AND THE RF SHIELD.

INSTALLER NOTE: ALLOW SPACE FOR END STUD AND FINISHES

RF DOOR OPENING

SELECTING & CONGRUOUS LINDING THESE CONNECTIONS TO BE MADE BY OTHERS.

REFER TO THE RF ACCESSORY LIST FOR SIZE & QUANTITY OF DIELECTRIC WAVEGUIDES

DETAILS

ETS-LINDGREN
An ESCO Company

Corporate Office: 1500 Ohio Drive • Norcross, GA 30052 • Fax: 770.440.2022 • 770.440.2023
400 West Street Building • Columbus Heights, IL 60018 • 800.877.2820 • 800.877.1371 • Fax

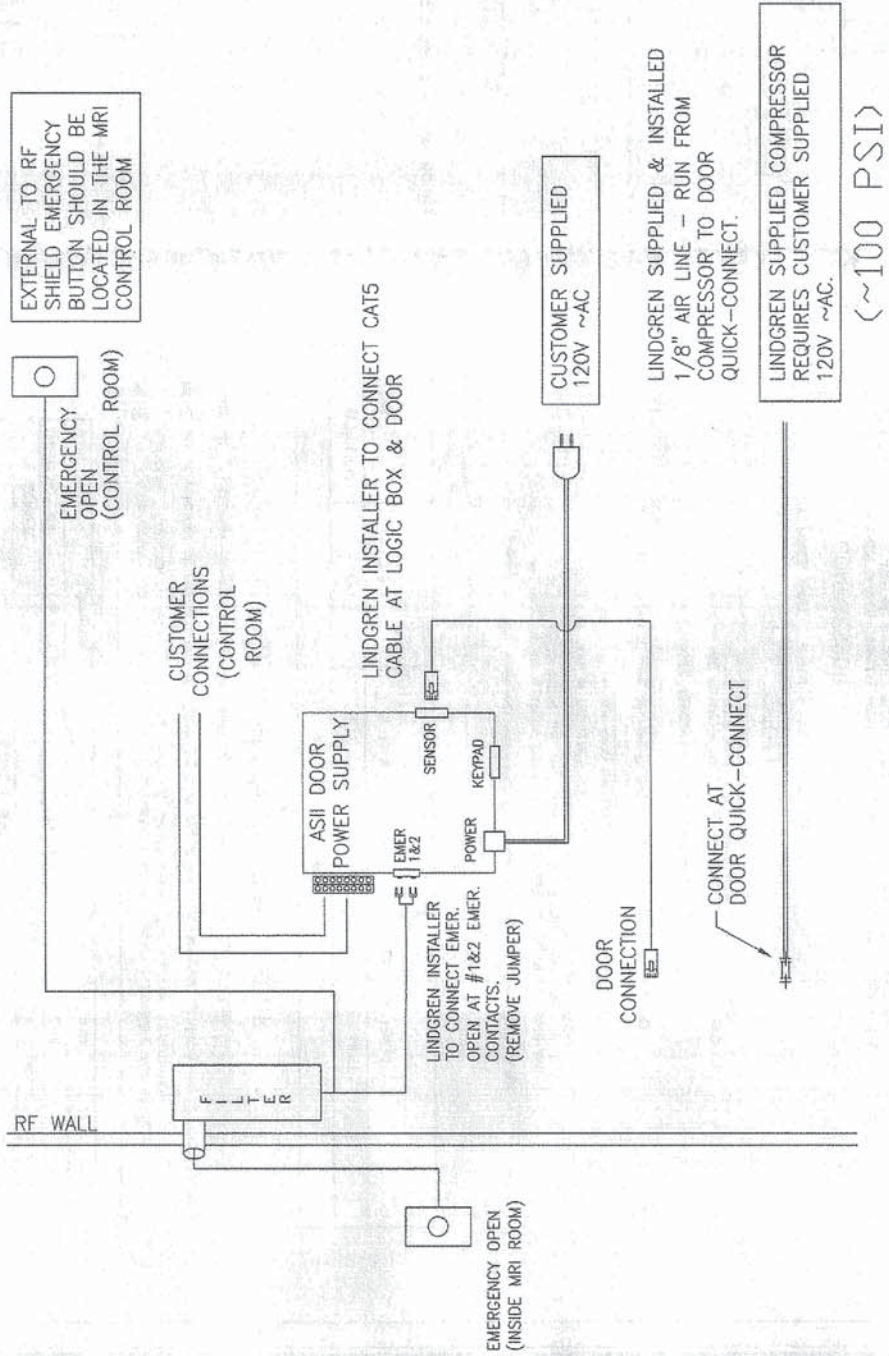
REVISIONS
REV. DATE DESCRIPTION
A 4/17/11 (NEP) Revised per Philips drawings 7/26/10 pending change order approval

SHEET TITLE: DETAILS

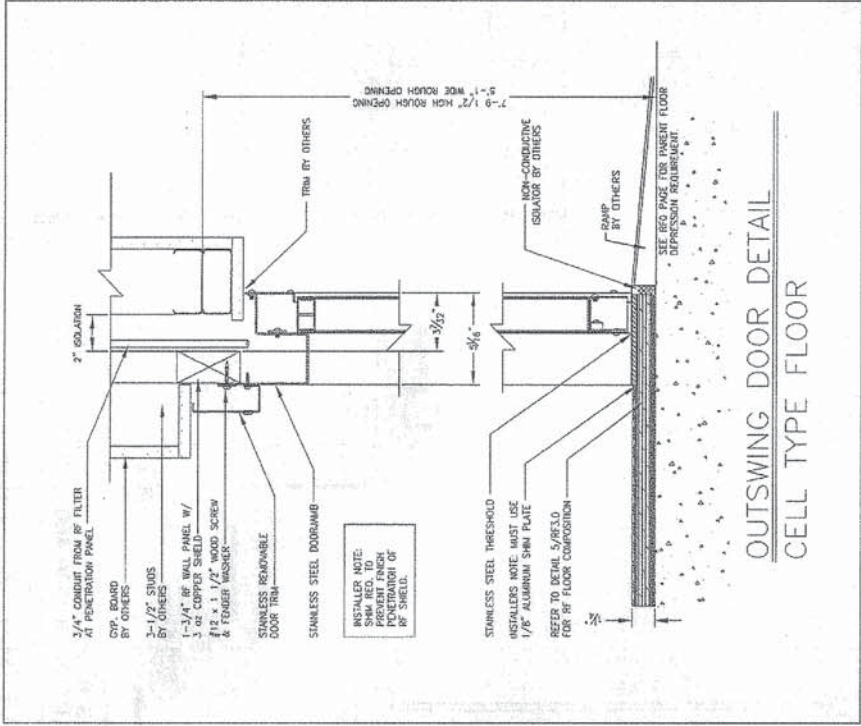
PROJECT TITLE: VA MEDICAL CENTER
PHILIPS 3.01
10701 EAST BOULEVARD
CLEVELAND, OH 44106

DATE: 7/16/10
SCALE: A
JOB NO: 33618B
DRAWING NO: RF3

AUTOSEAL 2 OUTSWING ELECTRICAL CONNECTIONS.



Philips room: This is a shop drawing of the existing shielding system. This is not intended to show new work.



ETS-LINDGREN
An EISCO Company
Headquarters Office: 7500 Cline Drive • Houston, TX 77060
Chicago Office: 400 Loop East Boulevard • Chicago Heights, IL 60439

AUTOSEAL DOOR

REV.	DATE	DESCRIPTION
A	4/17/11	(REV) Revised per Philips drawings 7/20/10 pending change order 007046

PROJECT TITLE:
VA MEDICAL CENTER
PHILIPS 3.0T
VA MEDICAL CENTER
10701 EAST BOULEVARD
CLEVELAND, OH 44106

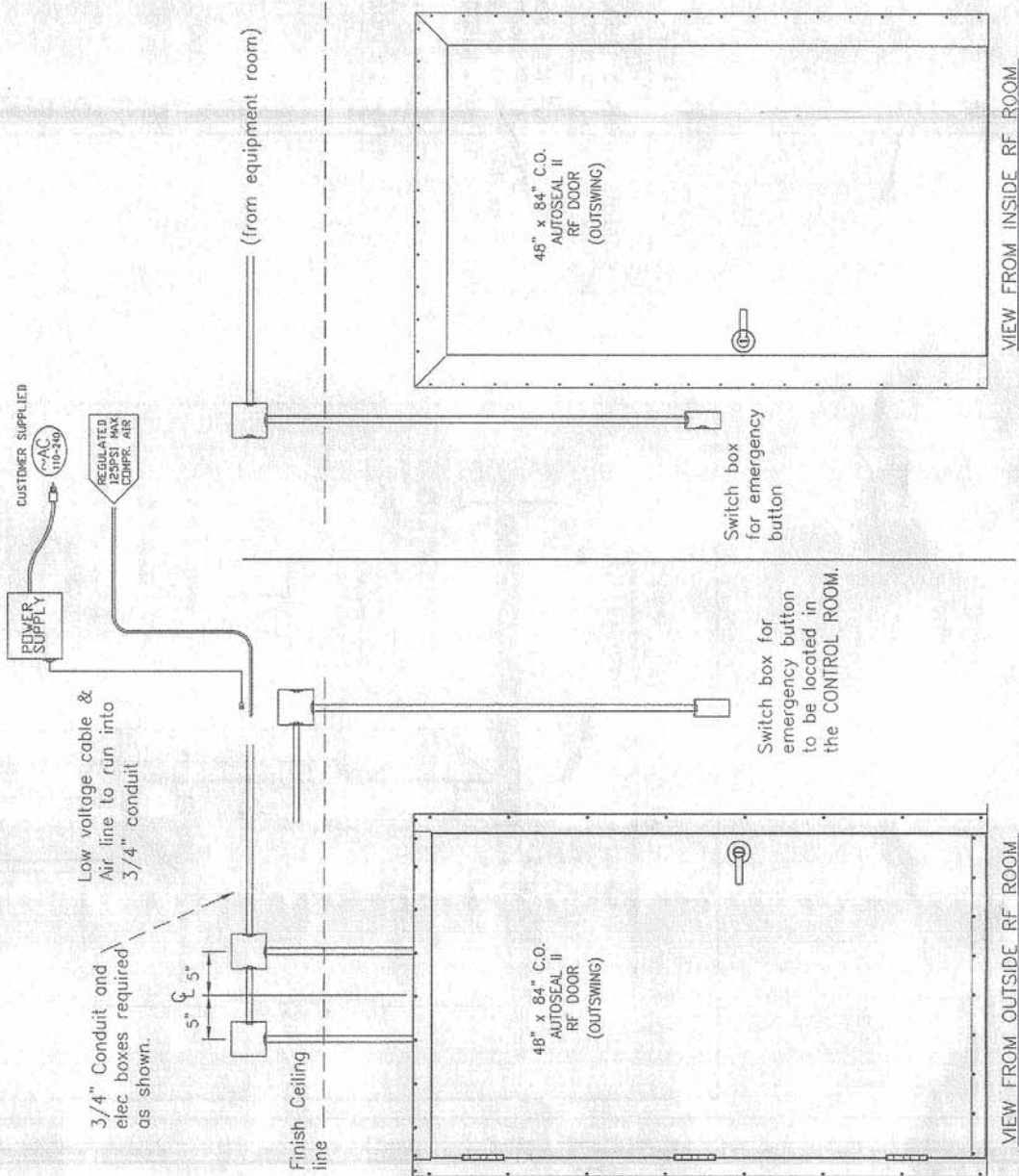
DRAWN BY: JMS
CHECKED BY: JMS
DATE: 7/16/10
SCALE:
JOB NO: 33618B
REV: A
SHEET NO: RF4

Philips room: This is a shop drawing of the existing shielding system. This is not intended to show new work.

AUTOSEAL 2 OUTSWING
ELECTRICAL CONNECTIONS.

NOTE: CUSTOMER TO SUPPLY AND INSTALL CONDUIT FOR CAT5 CABLE & AIR LINE.

NOTE: DOOR LOGIC BOX MUST BE LOCATED IN THE EQUIPMENT ROOM AT THE PENETRATION PANEL.



(REVERSE FOR LEFT HAND SWING)

OUTSWING DOOR INSTALLATION GUIDE

AUTO SEAL RF DOOR
CUSTOMER SUPPLIED UTILITY ITEMS

ELECTRICAL ITEMS			
POWER SUPPLY			
POWER	SUPPLY TO:	LOCATION	METHOD
110-240 VAC 45W	Door power supply	Filter panel	Outlet
117Vac 130watt	Compressor	As required	Outlet

NOTE 1: Compressor needs to be located in an area that is easily accessible for servicing. I.E. Equipment room Please refer to Users Guide for further information

NOTE 2: Customer is responsible for locating and mounting compressor at time of RF installation.

NOTE 3: Customer is responsible for 110 volt outlet at compressor location.

LINDGREN SUPPLIED COMPRESSOR

AIR COMPRESSOR				
SUPPLIER	MODEL	SIZE	WEIGHT	NOTES
PUMA	LA-5706	24"L x 13"W x 17"H	28 Lbs.	Warranty: 1 yr. Limited

DOOR SYSTEM

USE THE FINE SIDE OF AN ALUMINUM OXIDE ABRASIVE SPONGE TO CLEAN THE JAMB AND THRESHOLD IN THE AREAS WHERE THE DOOR SEAL MAKES CONTACT. SAND ONLY THE THREE JAMB SURFACES AND THE THRESHOLD. IT IS ONLY NECESSARY TO CLEAN AND BRIGHTEN THE SURFACE, GENERALLY SAND IN THE LENGTH DIRECTION.

DO NOT SAND THE DOOR SEAL!

USE A CLEAN CLOTH TO WIPE OFF THE PARTICLES AND DIRT FROM THE JAMB AND THRESHOLD.

FOR OPTIMUM PERFORMANCE, REPEAT THIS PROCEDURE MONTHLY.

THE DOOR MECHANISM AND PERIMETER SEALS ARE MAINTENANCE FREE. CAUTION SHOULD BE TAKEN TO NOT CLOSE THE DOOR WITH OBSTRUCTIONS ACROSS THE THRESHOLD OR IN THE DOOR OPENING. (POWER CORDS, ETC...)

POWER SUPPLY SYSTEM

THE POWER SUPPLY SYSTEM IS MAINTENANCE FREE.

AIR COMPRESSOR

CUSTOMER SHOULD COMPLETE WARRANTY REGISTRATION AND SEND TO MANUFACTURER.
NOTE: NUMBER ON WARRANTY REGISTRATION MUST MATCH NUMBER ON COMPRESSOR.

DATA UNIT: COUNCIL SUPERIOR 1900-1910

DRAIN MOISTURE FROM DISPENSER REGULARLY. RECOMMEND TO LOCATE COMPRESSOR NEAR A DRAIN AND RUN A HOSE FROM THE DISPENSER TO THE DRAIN TO AVOID WEEKLY DRAIN MAINTENANCE OF DISPENSER.

BLOW DOWN RECEIVER (AIR TANK) AT LEAST ONCE A WEEK. CLOSE DRAIN COCK TIGHTLY AFTERWARDS.

LINDGREN R.F. ENCLOSURES, INC. TEL. (630) 307-7200 FAX (630) 307-7571

EMERGENCY AIR SUPPLY

A COMPRESSOR FAILURE CAN BE TEMPORARY UNTIL A WARRANTED REPLACEMENT CAN BE

ALTERNATE COMPRESSOR PROCEDURE.

IF YOU HAVE SUPPLIED YOUR OWN COMPLE

HANDLE HARDWARE

SCHLAGE LEVER HANDLE WITH U