

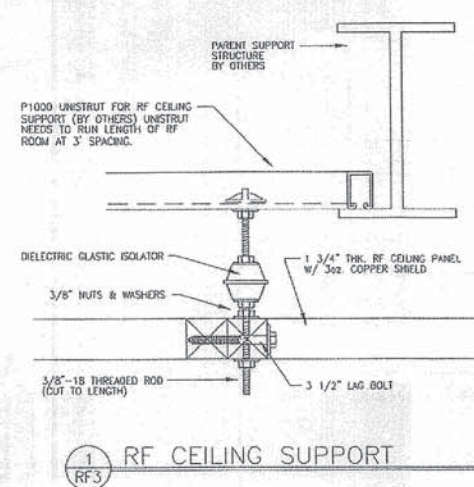
- 
- 28'-7" INSIDE PARENT ROOM
- 26'-2" OUTSIDE RF ENCLOSURE
- 1" 7'-6" 9" MAGNET ACCESS 5'-10 3/4" 1'-2" 4'
- INTERIOR STUDS BY OTHERS  
5/8" CYP. BOARD BY OTHERS  
2" ISOLATION TYPICAL AROUND RF ROOM
- 8'-11" 10'-8 1/2" 8'-5" 6" CRYO VENT W.G. MAGNET ISOCENTER TO BE DETERMINED BY MAGNET VENDOR.
- 20" X 29" CEILING HATCH FOR PRESSURE RELIEF FIELD LOCATE
- FLUSH MOUNTED CABLE TRENCH
- PENETRATION PANEL
- UNISTRUT BRACING REQUIRED BOTH SIDES OF RF DOOR. SEE DETAIL THIS PAGE AND 11/RF.3.
- RF DOOR AUTOSEAL II (STC 40)
- RF CLEARSHIELD WINDOW
- 10'-8" R.O. 4'-10 1/2" 5" 4'-10 1/2" 5'-5" 21" OUTSIDE RF ENCLOSURE
- 1'-6" 4" R.O. 17'-1" 5'-6" R.O. 6"

INSTALLER NOTE: ALLOW SPACE FOR END STUD AND FINISHES

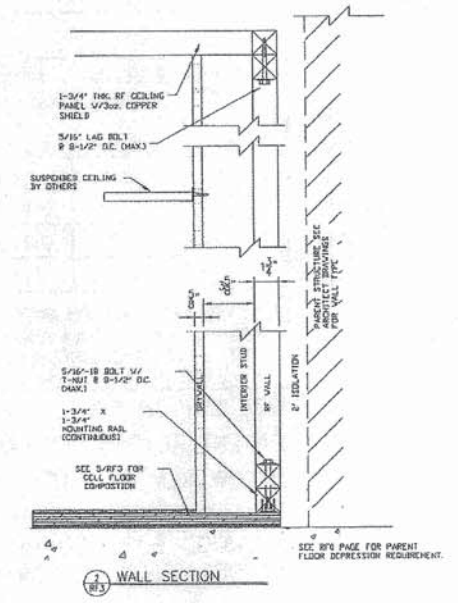
P1001T UNISTRUT INSTALLED BOTH SIDES OF R DOOR, ETS-LINDGREN TO SUPPLY AND INSTALL SUPPORTS. SEE 11/R/3

INSTALLERS NOTE:  
MAGNET ANCHORS, PADS, BRACKETS AND  
CRYOGEN VENT LOCATIONS TO BE LOCATED  
WITH ON SITE VENDOR DRAWINGS FROM  
THE G.C.

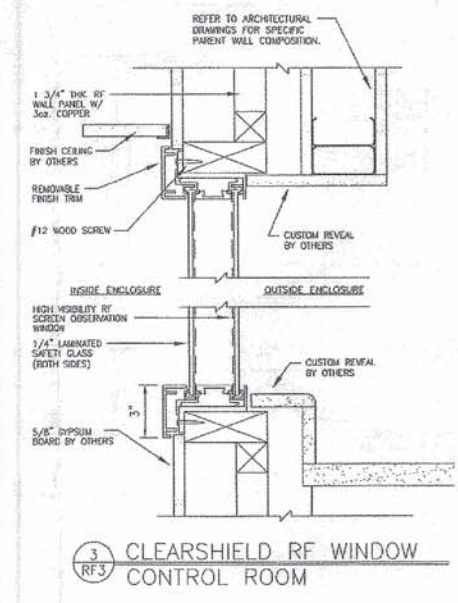




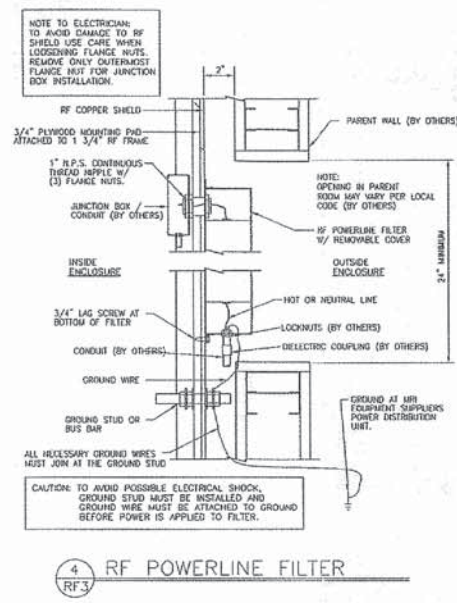
1 RF3 RF CEILING SUPPORT



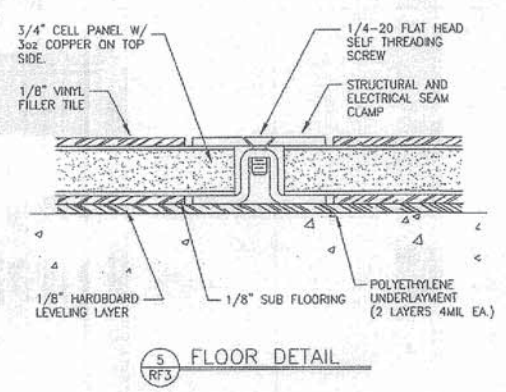
2 RF3 WALL SECTION



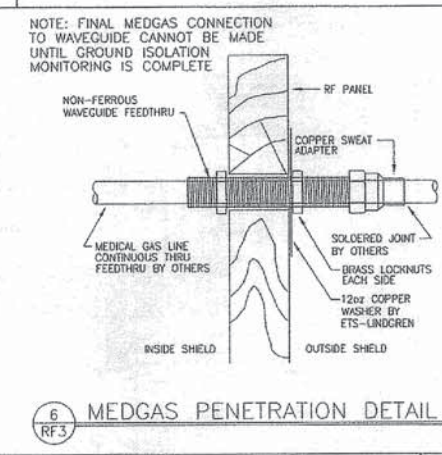
3 RF3 CLEARSHIELD RF WINDOW CONTROL ROOM



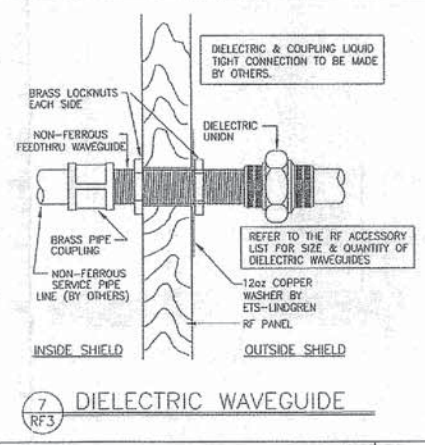
4 RF3 RF POWERLINE FILTER



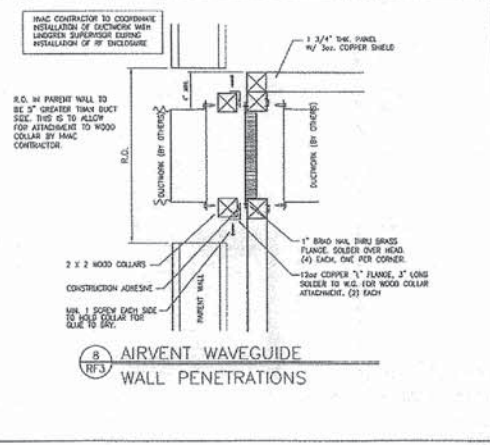
5 RF3 FLOOR DETAIL



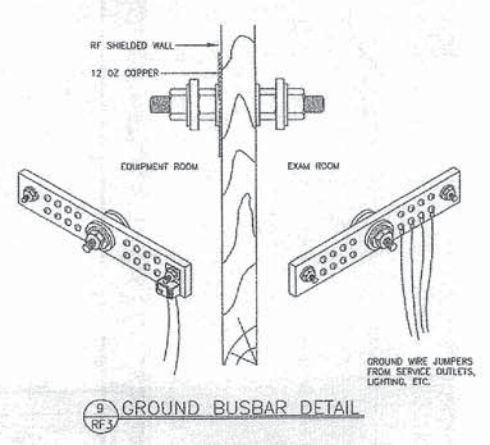
6 RF3 MEDGAS PENETRATION DETAIL



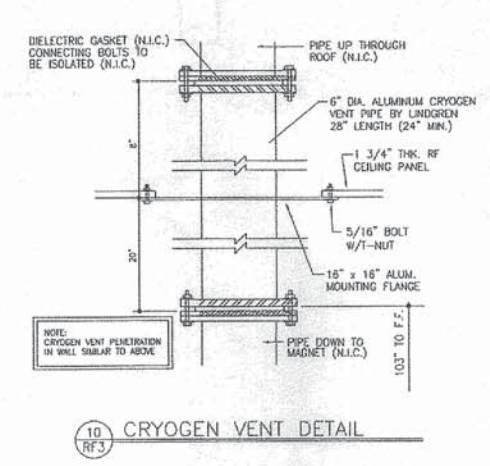
7 RF3 DIELECTRIC WAVEGUIDE



8 RF3 AIRVENT WAVEGUIDE WALL PENETRATIONS



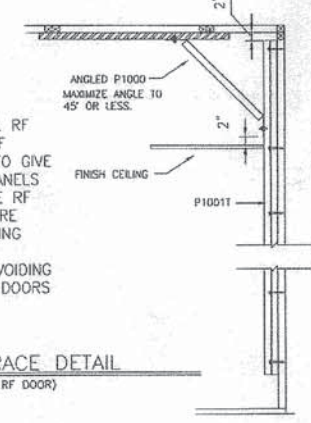
9 RF3 GROUND BUSBAR DETAIL



10 RF3 CRYOGEN VENT DETAIL

NOTE:  
THIS DETAIL APPLIES TO ALL RF DOORS ATTACHED TO THE RF SHIELD. THIS IS REQUIRED TO GIVE SUPPORT TO THE SHIELD PANELS DUE TO THE WEIGHT OF THE RF DOORS. IF THESE BRACES ARE REMOVED THE DOOR SHIELDING EFFECTIVENESS WILL BE COMPROMISED, THEREFORE VOIDING ANY WARRANTY ON THE RF DOORS AND THE RF SHIELD.

11 RF3 DOOR BRACE DETAIL (BOTH SIDES OF RF DOOR)



ACCESSORIES LIST			
QTY	DESCRIPTION	REMARKS	REF.
1	23" x 52" OPENING	INTERFACE PANEL	
1	6" CRYOGEN VENT	HELIUM VENTING	10/RF3
1	GROUNDING BUS BAR	SINGLE POINT GROUND	9/RF3
3	0-30AMP 2LINE PWR FILTER	LIGHTING/OUTLETS	4/RF3
1	0-30AMP 2LINE PWR FILTER	EPO	4/RF3
2	1AMP 2LINE PWR FILTER	SPARE	4/RF3
3	1/2" WAVEGUIDE FEEDTHRU	MEDGAS	6/RF3
1	3/4" WAVEGUIDE FEEDTHRU	VACUUM	6/RF3
1	1 1/2" WAVEGUIDE FEEDTHRU	SPRINKLER	7/RF3
5	2" WAVEGUIDE FEEDTHRU	PENETRATION PANEL	7/RF3
1	1 1/2" WAVEGUIDE FEEDTHRU	15" LONG O2 SENSOR	4/RF3a
"	" x " W.G. AIRVENT	HVAC	8/RF3
"	" x " W.G. AIRVENT	HVAC	8/RF3

**ETS-LINDGREN**  
An ESCO Company  
Manufacturing Office: 7900 Erie Drive • Muskegon, MI 49448  
735.552.3002 • 735.552.3003 • Fax  
Chicago Office: 11000 Cass Boulevard • Chicago Heights, IL 60439  
800.807.2505 • 800.370.3701 • Fax

**DETAILS**  
SHEET TITLE  
RF3

REVISIONS  
B 4/18/11 (NFP) UPDATED MARKET TO TITAN  
A 3/24/11 (NFP) ADDED TRENCH DETAIL  
REV. DATE DESCRIPTION

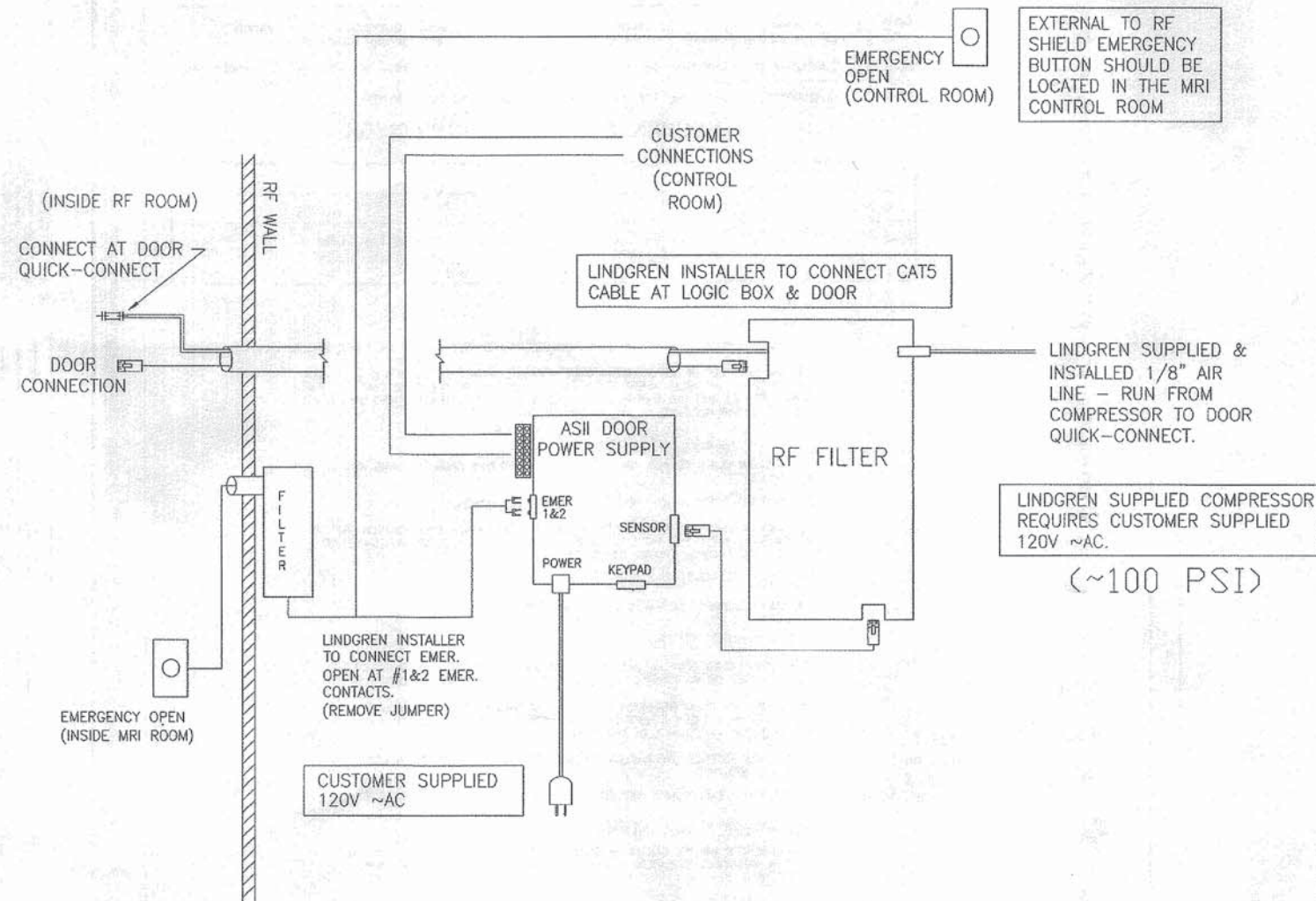
PROJECT TITLE  
VA MEDICAL CENTER  
TOSHIBA 1.5T TITAN  
ADDRESS  
VA MEDICAL CENTER  
10701 EAST BOULEVARD  
CLEVELAND, OH 44108

DESIGN BY: JMS  
CHECKED BY:  
DATE: 4/24/09  
SCALE:  
JOB NO: 33618A  
REV: B  
DRAWING NO: RF3

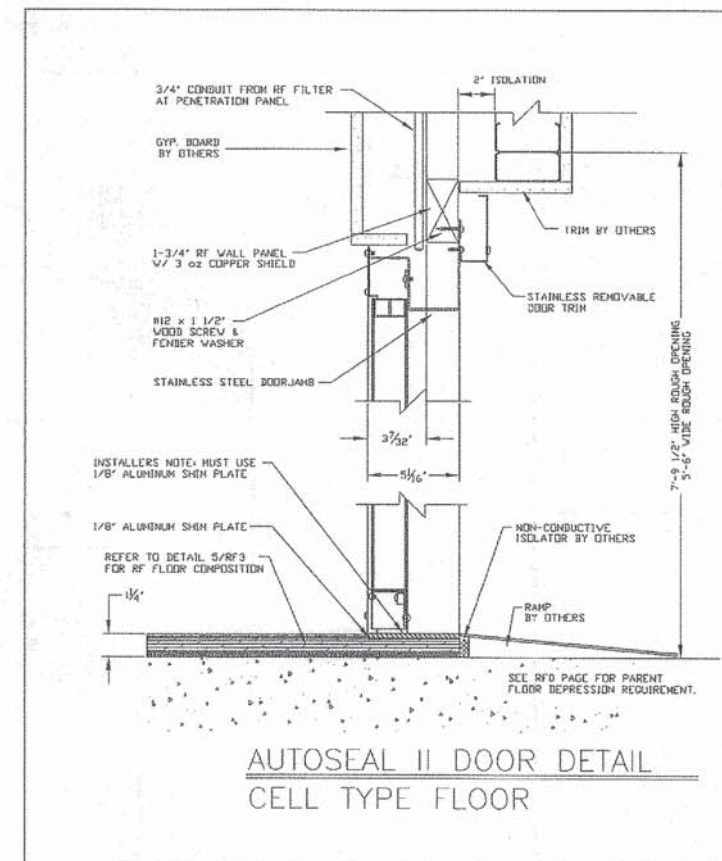
Toshiba room: This is a shop drawing of the existing shielding system. This is not intended to show new work.



# AUTOSEAL 2 INSWING ELECTRICAL CONNECTIONS.



Toshiba room: This is a shop drawing of the existing shielding system. This is not intended to show new work.



**ETS-LINDGREN**  
An EBCO Company  
Nashua Office: 7550 Glen Drive • Nashua, NH 03040  
Tel: 603.883.3333 • Fax: 603.883.3334  
Chicago Office: 480 High Grove Boulevard • Oakbrook Hills, IL 60181  
Tel: 630.577.1000 • Fax: 630.577.1071 • Tlx: 630.577.1071

**AUTOSEAL DOOR**

REV.	DATE	DESCRIPTION
B	4/7/11	(NEP) UPDATED DRAWING TO TITAN
A	3/24/11	(NEP) ADDED TRENCH DETAIL

PROJECT TITLE:  
VA MEDICAL CENTER  
TOSHIBA 1.5T TITAN

ADDRESS:  
VA MEDICAL CENTER  
10701 EAST BOULEVARD  
CLEVELAND, OH 44106

DRAWN BY: JMS

CHECKED BY:

DATE: 4/24/09

SCALE:

JOB NO: 33618A

REV: B

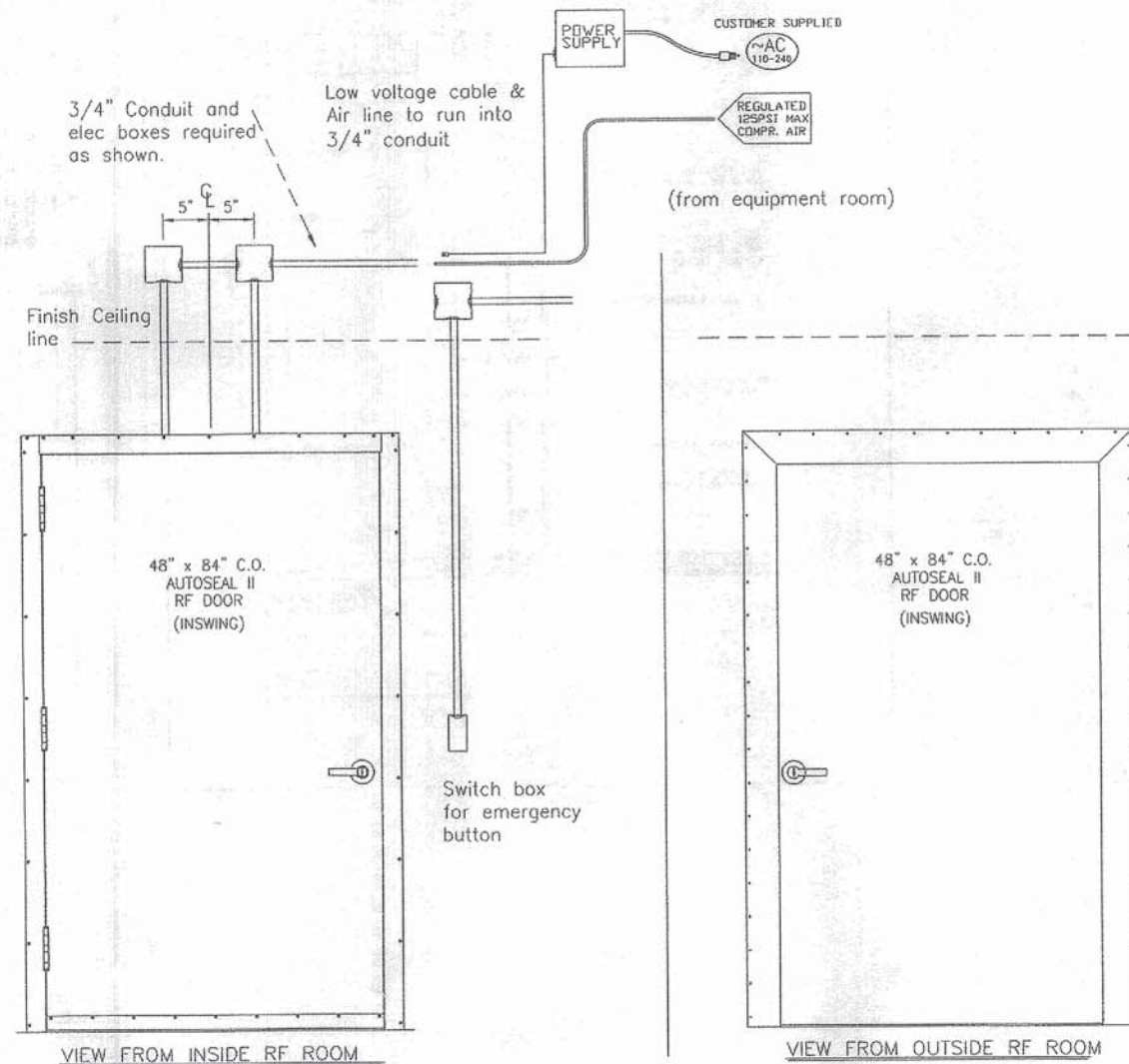
DRAWING NO: RF4



# AUTOSEAL 2 INSWING CONDUIT CONNECTIONS.

NOTE: CUSTOMER TO SUPPLY AND INSTALL  
CONDUIT FOR CAT5 CABLE & AIR LINE.

NOTE: DOOR LOGIC BOX MUST BE LOCATED IN THE  
EQUIPMENT ROOM AT THE PENETRATION PANEL.



(REVERSE FOR LEFT HAND SWING)  
INSWING DOOR INSTALLATION GUIDE

Toshiba room: This is a shop drawing of the existing shielding system. This is not intended to show new work.

## AUTO SEAL RF DOOR CUSTOMER SUPPLIED UTILITY ITEMS

ELECTRICAL ITEMS			
POWER SUPPLY			
POWER	SUPPLY TO:	LOCATION	METHOD
110-240 VAC 45W	Door power supply	Filter panel	Outlet
117vac 13Amp	Compressor	As required	Outlet

- NOTE 1: Compressor needs to be located in an area that is easily accessible for servicing. I.E. Equipment room Please refer to Users Guide for further information
- NOTE 2: Customer is responsible for locating and mounting compressor at time of RF installation.
- NOTE 3: Customer is responsible for 110 volt outlet at compressor location.

## LINDGREN SUPPLIED COMPRESSOR

AIR COMPRESSOR				
SUPPLIER	MODEL	SIZE	WEIGHT	NOTES
PUMA	LA-5706	24"L x 13"W x 17"H	28 Lbs.	Warranty: 1 yr. Limited

## DOOR SYSTEM

KEEP STAINLESS STEEL JAMB AND THRESHOLD CLEAN AND FREE OF WAX OR FLOOR POLISH.

USE THE FINE SIDE OF AN ALUMINUM OXIDE ABRASIVE SPONGE TO CLEAN THE JAMB AND THRESHOLD IN THE AREAS WHERE THE DOOR SEAL MAKES CONTACT. SAND ONLY THE THREE JAMB SURFACES AND THE THRESHOLD. IT IS ONLY NECESSARY TO CLEAN AND BRIGHTEN THE SURFACE. GENERALLY SAND IN THE LENGTH DIRECTION.

DO NOT SAND THE DOOR SEAL!

USE A CLEAN CLOTH TO WIPE OFF THE PARTICLES AND DIRT FROM THE JAMB AND THRESHOLD.

FOR OPTIMUM PERFORMANCE, REPEAT THIS PROCEDURE MONTHLY.

THE DOOR MECHANISM AND PERIMETER SEALS ARE MAINTENANCE FREE. CAUTION SHOULD BE TAKEN TO NOT CLOSE THE DOOR WITH OBSTRUCTIONS ACROSS THE THRESHOLD OR IN THE DOOR OPENING. (POWER CORDS, ETC...)

## POWER SUPPLY SYSTEM

THE POWER SUPPLY SYSTEM IS MAINTENANCE FREE.

## AIR COMPRESSOR

CUSTOMER SHOULD COMPLETE WARRANTY REGISTRATION AND SEND TO MANUFACTURER. NOTE: NUMBER ON WARRANTY REGISTRATION MUST MATCH NUMBER ON COMPRESSOR.

DRAIN MOISTURE FROM DISPENSER REGULARLY. RECOMMEND TO LOCATE COMPRESSOR NEAR A DRAIN AND RUN A HOSE FROM THE DISPENSER TO THE DRAIN TO AVOID WEEKLY DRAIN MAINTENANCE OF DISPENSER.

BLOW DOWN RECEIVER (AIR TANK) AT LEAST ONCE A WEEK. CLOSE DRAIN COCK TIGHTLY AFTERWARDS.

LINDGREN R.F. ENCLOSURES, INC. TEL. (630) 307-7200 FAX (630) 307-7571

## EMERGENCY AIR SUPPLY

A COMPRESSOR FAILURE CAN BE TEMPORARILY REPLACED BY A PORTABLE AIR TANK UNTIL A WARRANTED REPLACEMENT CAN BE SENT. CONTACT LINDGREN FOR THIS PROCEDURE.

## ALTERNATE COMPRESSOR

IF YOU HAVE SUPPLIED YOUR OWN COMPRESSOR, FOLLOW THE MANUFACTURERS RECOMMENDED MAINTENANCE PROCEDURES.

## HANDLE HARDWARE

SCHLAGE LEVER HANDLE WITH US-260 FINISH.

**ETS LINDGREN**  
An ESCO Company  
1930 Ohio Drive • Marietta, OH 44130  
733.333.3333 • 733.333.3333 • Fax  
Chicago Office: 440 High Creek Boulevard • Grosse Pointe Woods, IL 60089  
800.307.7200 • 800.307.7571 • Fax

AUTOSEAL DOOR

REVISIONS

REV	DATE	DESCRIPTION
A	12/24/11	(NEP) ADDED TRENCH DETAIL
B	4/18/11	(NEP) UPDATED MAGNET TO TITAN

PROJECT FILE  
VA MEDICAL CENTER  
TOSHIBA 1.5T TITAN  
ADDRESS  
VA MEDICAL CENTER  
10701 EAST BOULEVARD  
CLEVELAND, OH 44106

DRAWN BY: JMS  
CHECKED BY:  
DATE: 4/24/09  
SCALE:

JOB NO: 33618A  
REV: B

DRAWING NO: RF5