

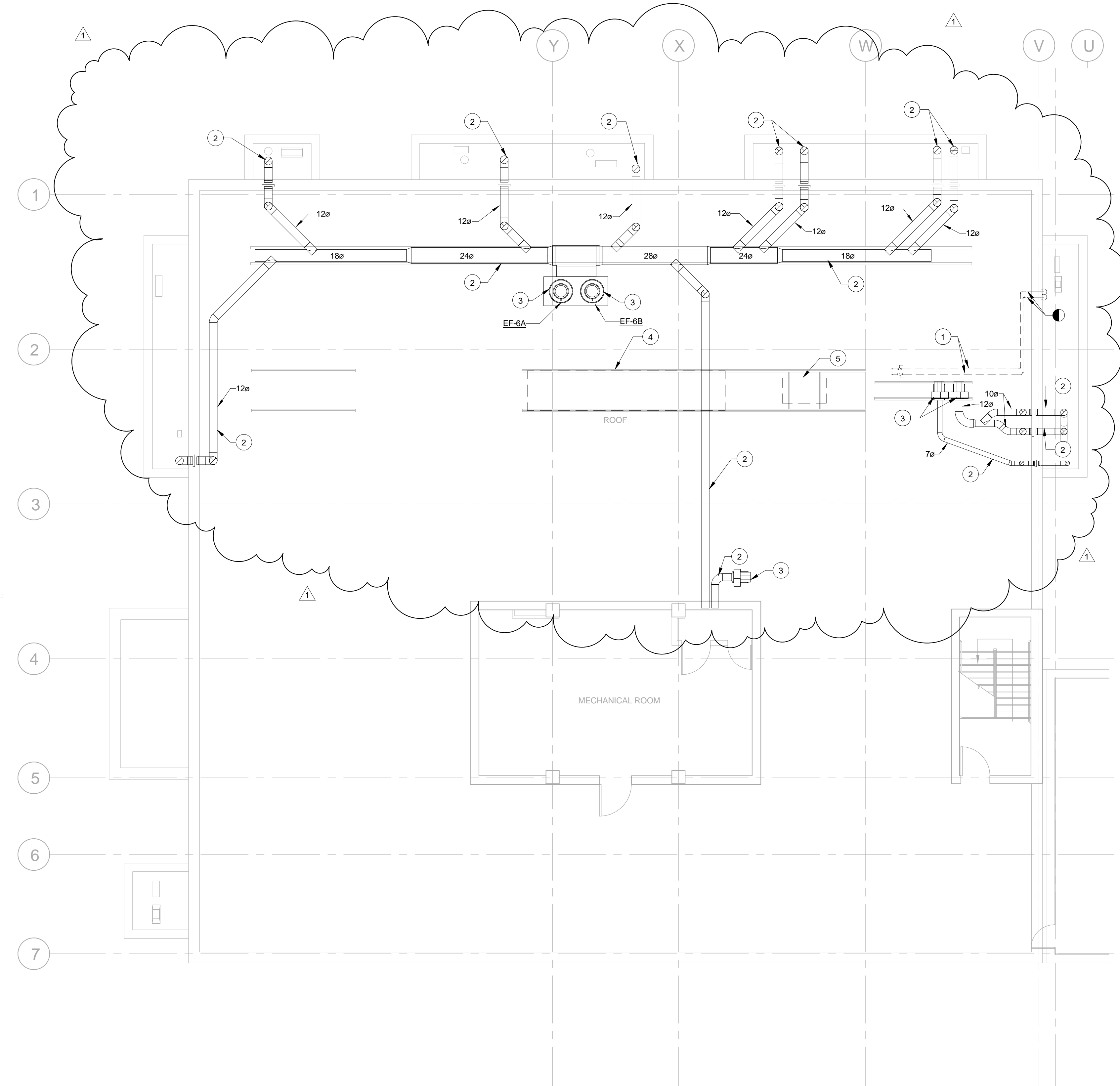
one eighth inch = one foot
 one quarter inch = one foot
 one half inch = one foot
 three quarters inch = one foot
 one inch = one foot
 one and one half inches = one foot
 two inches = one foot
 three inches = one foot
 four inches = one foot
 six inches = one foot
 eight inches = one foot
 ten inches = one foot
 twelve inches = one foot
 one foot = one foot
 one and one half feet = one foot
 two feet = one foot
 three feet = one foot
 four feet = one foot
 five feet = one foot
 six feet = one foot
 seven feet = one foot
 eight feet = one foot
 nine feet = one foot
 ten feet = one foot
 eleven feet = one foot
 twelve feet = one foot
 one and one half feet = one foot
 two feet = one foot
 three feet = one foot
 four feet = one foot
 five feet = one foot
 six feet = one foot
 seven feet = one foot
 eight feet = one foot
 nine feet = one foot
 ten feet = one foot
 eleven feet = one foot
 twelve feet = one foot

MECHANICAL DEMOLITION GENERAL NOTES

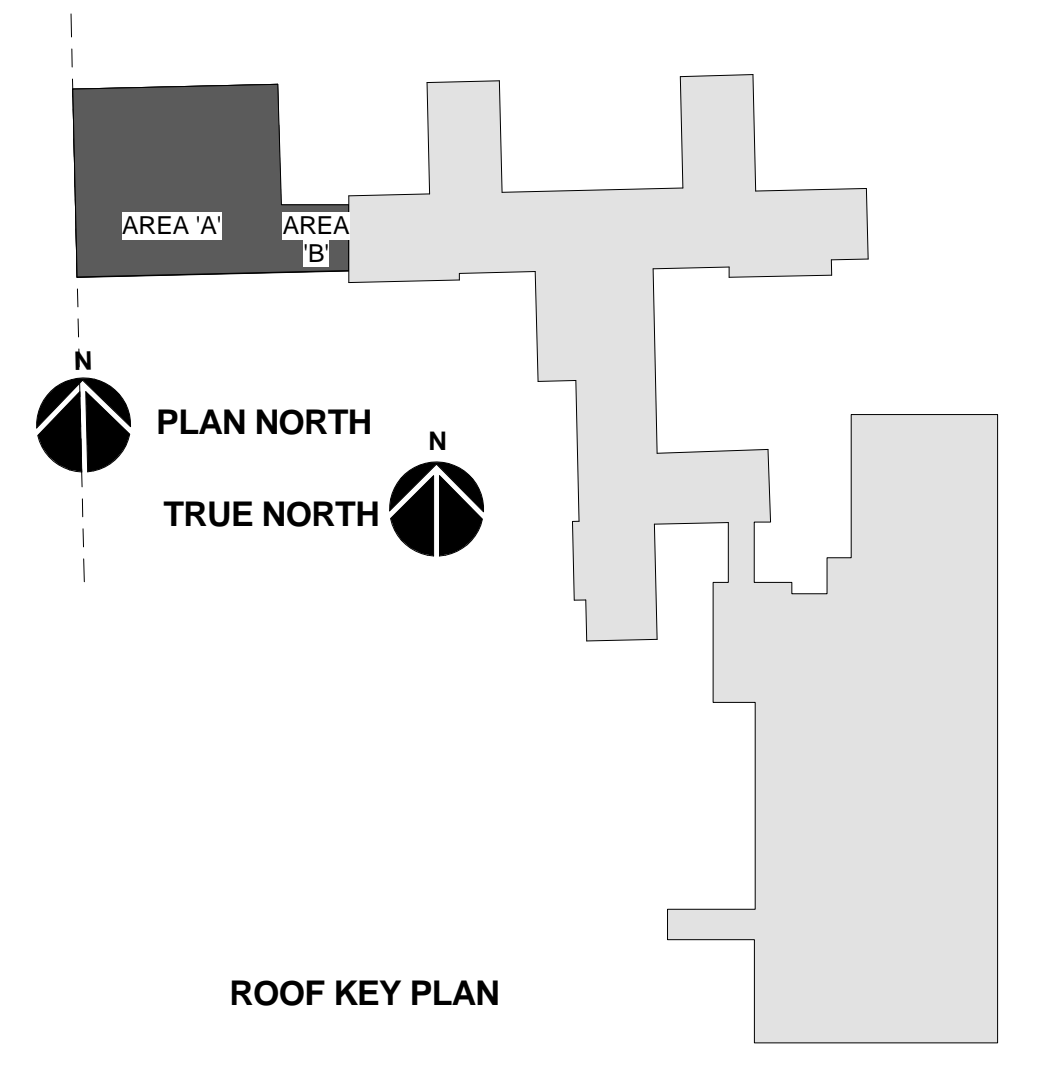
- A. ALL DUCTWORK, DIFFUSERS, GRILLES AND PIPING SHOWN ARE BASED ON SITE OBSERVATIONS AND EXISTING DOCUMENTATION. CONTRACTOR SHALL VERIFY IN A NONDESTRUCTIVE MANNER ALL EXISTING CONDITIONS PRIOR TO CONSTRUCTION INCLUDING SIZES OF DUCTS AND PIPES TO BE REUSED.
- B. SEE ARCHITECTURAL PLANS FOR EXISTING CEILING WORK. CONTRACTOR SHALL REMOVE, STORE AND REPLACE CEILING TILES AND GRID AS NECESSARY TO PERFORM WORK.
- C. NOT ALL ITEMS ABOVE CEILING ARE SHOWN ON THIS PLAN, INCLUDING DOMESTIC WATER LINES, SANITARY AND VENT LINES, CABLING AND CONDUITS. CONTRACTOR SHALL COORDINATE WITH ALL OTHER TRADES.
- D. ALL OUTAGES TO BE APPROVED BY COR.
- E. SEE ARCHITECTURAL SHEETS FOR PHASING OF WORK.
- F. REFERENCE LIFE SAFETY PLANS FOR ALL FIRE AND SMOKE PARTITIONS, BARRIERS AND WALLS. MAINTAIN RATING OF ALL FIRE AND SMOKE PARTITIONS, BARRIERS AND WALLS.

KEY # NOTE

- 1 DEMOLISH EXISTING HWS AND HWR PIPING AND ALL ASSOCIATED FITTINGS AND ACCESSORIES BACK TO THE LIMIT OF DEMOLITION AND CAP.
- 2 EXISTING DUCTWORK TO REMAIN.
- 3 EXISTING EXHAUST FAN TO REMAIN.
- 4 DEMOLISH EXISTING AIR HANDLING UNIT AND ALL ASSOCIATED PIPING AND CONTROLS.
- 5 DEMOLISH EXISTING CHILLER UNIT AND ALL ASSOCIATED PIPING AND CONTROLS.



D WING ROOF MECHANICAL DEMOLITION PLAN
 1-MD105
 1/8" = 1'-0"



100% SUBMITTAL
 FULLY SPRINKLERED

Revision #	Description	Date
1	RFI #4 ROOF COORDINATION	6-29-16

Submissions	Date
65% DESIGN DEVELOPMENT	1-23-15
95% CONSTRUCTION DOCUMENTS	2-25-15
100% SUBMITTAL DOCUMENTS	5-29-15
BID DOCUMENTS	9-25-15

VA United States Department of Veterans Affairs
 R. L. Roudebush VAMC
 1481 West 10th Street
 Indianapolis, Indiana 46202

ARCHITECT/ENGINEERS:

AMERICAN STRUCTUREPOINT
 7260 SHADELAND STATION
 INDIANAPOLIS, IN 46256-3957
 TEL 317.547.5580 FAX 317.543.0270
 www.structurepoint.com

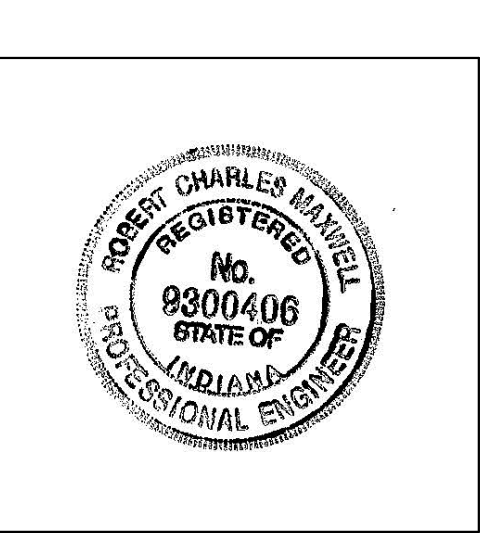
APOGEE
 Consulting Group
 www.acg-pa.com
 Apogee Project # 13-276

Raleigh, NC
 Indianapolis, IN
 Philadelphia, PA
 Pittsburgh, PA
 Virginia Beach, VA
 Fort Collins, CO
 (919) 858-7420

WP DESIGN

CONSULTANTS

USFin Development, LLC
 1105 West Weir Street
 Litchfield, IL 62056



Drawing Title D WING ROOF MECHANICAL DEMOLITION PLAN
Approved: Project Director

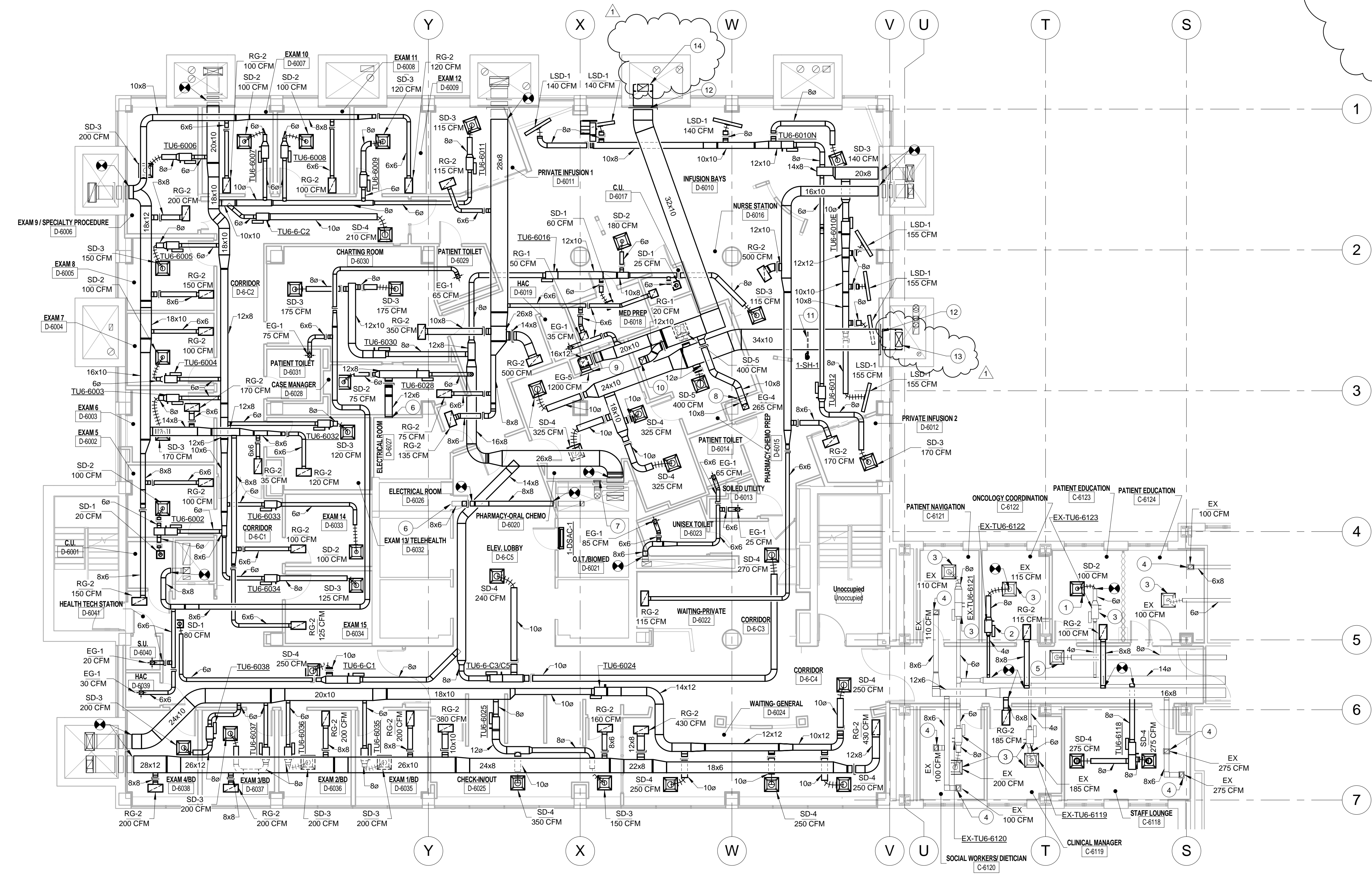
Project Title EXPAND SPECIALTY CARE	Project Number V.A. 583-331
Location R. L. Roudebush VAMC, Indianapolis, IN	Building Number 1
Date 09-25-15	Checked RCM
Drawn ACK	Drawing Number 1-MD105 11FY14

Office of Construction and Facilities Management
VA Department of Veterans Affairs

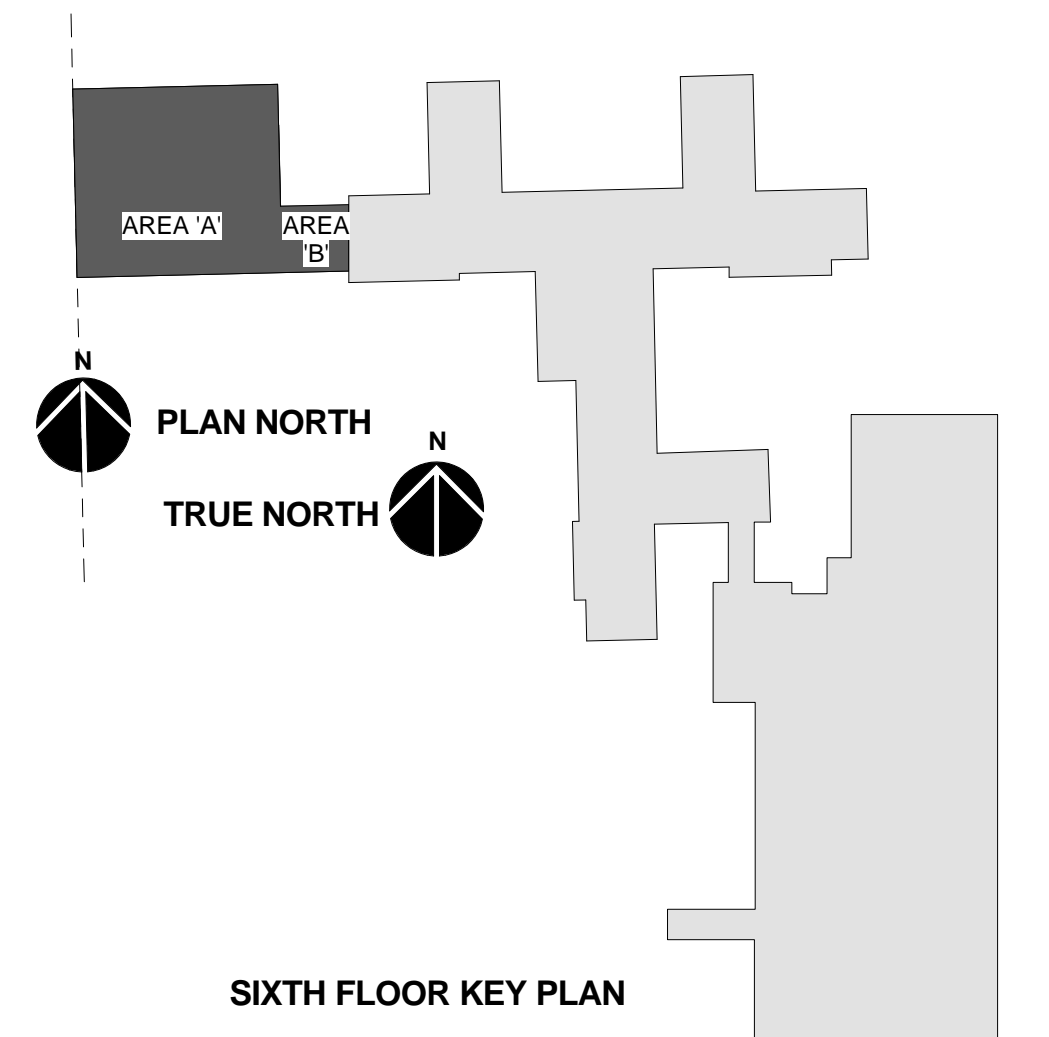
HVAC GENERAL NOTES

- A. COORDINATE ALL WORK WITH THE GENERAL CONTRACTOR, OTHER TRADES, AND THE COR TO MINIMIZE DISRUPTION OF AREAS OUTSIDE OF THE PROJECT LIMITS OF WORK.
- B. TAKE-OFF FOR TERMINAL UNIT SHALL BE SIZED FOR 0.08"/100' P.D. REDUCE TO INLET SIZE BEFORE CONNECTING TO TERMINAL UNIT AT MANUFACTURER'S RECOMMENDED LENGTH. THIS DISTANCE VARIES DEPENDING ON THE INLET SIZE.
- C. UNLESS NOTED OTHERWISE, ALL DIFFUSER AND GRILLE RUN-OUTS ARE THE SAME SIZE AS ITS NECK/DUCT CONNECTION SPECIFIED IN THE AIR DEVICE SCHEDULE.
- D. ALL DIFFUSER AND GRILLE TAKEOFFS SHALL INCLUDE A BALANCING DAMPER.
- E. SEE MECHANICAL PIPING SHEETS FOR THERMOSTAT LOCATIONS FOR EACH TERMINAL UNIT.
- F. COORDINATE LOCATION OF AIR DEVICES (SUPPLY, RETURN, EXHAUST) WITH THE CEILING LAYOUT. MOVE DEVICE TO AN ADJACENT AREA IF A CONFLICT WITH A LIGHT FIXTURE OR SPRINKLER HEAD, IS PRESENT.
- G. SEE 51-M-501 FOR TERMINAL UNIT DUCT CONNECTION DETAIL.
- H. ALL DUCTWORK DOWNSTREAM OF THE VAV BOXES SHALL BE CONSTRUCTED TO 1" W.C. PRESSURE CLASS AND SEAL CLASS A PER SMACNA DUCT CONSTRUCTION STANDARDS. ALL DUCT UPSTREAM SHALL BE CONSTRUCTED TO 3" W.C. PRESSURE CLASS AND SEAL CLASS A PER SMACNA DUCT CONSTRUCTION STANDARDS.
- I. COORDINATE FINAL DIFFUSER AND TERMINAL UNIT LOCATIONS WITH PATIENT LIFTS AND CURTAIN TRACKS TO ALLOW FOR INSTALLATION AND SERVICE CLEARANCE.
- J. ALL RETURN AND EXHAUST DUCTWORK SHALL BE CONSTRUCTED TO 1" W.C. PRESSURE CLASS AND SEAL CLASS A PER SMACNA DUCT CONSTRUCTION STANDARDS.

- | KEY # | NOTE |
|-------|---|
| 1 | EXISTING DIFFUSER RELOCATED. REBALANCE TO CFM SHOWN. SEE SHEET 1-MD101 FOR MORE INFORMATION. |
| 2 | EXISTING VAV BOX RELOCATED. REBALANCE TO CFM SHOWN. SEE SHEETS 1-MD101 AND 1-MD102 FOR MORE INFORMATION. |
| 3 | REBALANCE EXISTING DIFFUSERS AND VAV BOX TO CFM SHOWN. |
| 4 | REBALANCE EXISTING RETURN GRILLE TO CFM SHOWN. |
| 5 | REBALANCE EXISTING DIFFUSER TO 185 CFM. |
| 6 | REBALANCE EXISTING SUPPLY GRILLE TO 200 CFM. |
| 7 | CAP EXISTING SUPPLY DUCT. |
| 8 | 12" X 12" DUCT DOWN AND CONNECT TO EG-4880 IN WALL AT 8" ABOVE FINISHED FLOOR. |
| 9 | 16" X 16" DUCT DOWN AND CONNECT TO EG-51495 IN WALL AT 8" ABOVE FINISHED FLOOR. |
| 10 | 12" X 10" EXHAUST DUCT DOWN AND TRANSITION TO HOOD EXHAUST CONNECTION. |
| 11 | CONTRACTOR TO PROVIDE DUCT MOUNTED STEAM HUMIDIFIER. SEE 71-M-503 FOR MORE INFORMATION. |
| 12 | PROVIDE FIRE DAMPER AND 12" X 12" ACCESS DOOR. |
| 13 | 34" X 10" SUPPLY DUCT UP AND TRANSITION TO 24" X 12" UP TO ROOF LEVEL. SEE SHEET 1-MH103 FOR CONTINUATION. |
| 14 | 32" X 10" EXHAUST DUCT TO TRANSITION TO 18" X 12" IN CHASE AND GO UP TO ROOF LEVEL. SEE SHEET 1-MH103 FOR CONTINUATION. |



SIXTH FLOOR MECHANICAL HVAC PLAN
1/8" = 1'-0"



100% SUBMITTAL FULLY SPRINKLERED

three eighths inch = one foot
 one quarter inch = one foot
 one half inch = one foot
 three quarters inch = one foot
 one inch = one foot
 one and one half inches = one foot
 two inches = one foot
 three inches = one foot
 four inches = one foot
 five inches = one foot
 six inches = one foot
 seven inches = one foot
 eight inches = one foot
 nine inches = one foot
 ten inches = one foot
 eleven inches = one foot
 twelve inches = one foot
 thirteen inches = one foot
 fourteen inches = one foot
 fifteen inches = one foot
 sixteen inches = one foot
 seventeen inches = one foot
 eighteen inches = one foot
 nineteen inches = one foot
 twenty inches = one foot
 twenty one inches = one foot
 twenty two inches = one foot
 twenty three inches = one foot
 twenty four inches = one foot
 twenty five inches = one foot
 twenty six inches = one foot
 twenty seven inches = one foot
 twenty eight inches = one foot
 twenty nine inches = one foot
 thirty inches = one foot
 thirty one inches = one foot
 thirty two inches = one foot
 thirty three inches = one foot
 thirty four inches = one foot
 thirty five inches = one foot
 thirty six inches = one foot
 thirty seven inches = one foot
 thirty eight inches = one foot
 thirty nine inches = one foot
 forty inches = one foot
 forty one inches = one foot
 forty two inches = one foot
 forty three inches = one foot
 forty four inches = one foot
 forty five inches = one foot
 forty six inches = one foot
 forty seven inches = one foot
 forty eight inches = one foot
 forty nine inches = one foot
 fifty inches = one foot
 fifty one inches = one foot
 fifty two inches = one foot
 fifty three inches = one foot
 fifty four inches = one foot
 fifty five inches = one foot
 fifty six inches = one foot
 fifty seven inches = one foot
 fifty eight inches = one foot
 fifty nine inches = one foot
 sixty inches = one foot
 sixty one inches = one foot
 sixty two inches = one foot
 sixty three inches = one foot
 sixty four inches = one foot
 sixty five inches = one foot
 sixty six inches = one foot
 sixty seven inches = one foot
 sixty eight inches = one foot
 sixty nine inches = one foot
 seventy inches = one foot
 seventy one inches = one foot
 seventy two inches = one foot
 seventy three inches = one foot
 seventy four inches = one foot
 seventy five inches = one foot
 seventy six inches = one foot
 seventy seven inches = one foot
 seventy eight inches = one foot
 seventy nine inches = one foot
 eighty inches = one foot
 eighty one inches = one foot
 eighty two inches = one foot
 eighty three inches = one foot
 eighty four inches = one foot
 eighty five inches = one foot
 eighty six inches = one foot
 eighty seven inches = one foot
 eighty eight inches = one foot
 eighty nine inches = one foot
 ninety inches = one foot
 ninety one inches = one foot
 ninety two inches = one foot
 ninety three inches = one foot
 ninety four inches = one foot
 ninety five inches = one foot
 ninety six inches = one foot
 ninety seven inches = one foot
 ninety eight inches = one foot
 ninety nine inches = one foot
 one hundred inches = one foot

Revision #	Description	Date
1	RFI #4 ROOF COORDINATION	6-29-16

Submissions	Date
65% DESIGN DEVELOPMENT	1-23-15
95% CONSTRUCTION DOCUMENTS	2-25-15
100% SUBMITTAL DOCUMENTS	5-29-15
BID DOCUMENTS	9-25-15

VA United States Department of Veterans Affairs
 R. L. Roudebush VAMC
 1481 West 10th Street
 Indianapolis, Indiana 46202

ARCHITECT/ENGINEERS:
AMERICAN STRUCTUREPOINT
 7260 SHADELAND STATION
 INDIANAPOLIS, IN 46256-3957
 TEL 317.547.5580 FAX 317.543.0270
 www.structurepoint.com

APOGEE
 Consulting Group
 www.acgpa.com
 Apogee Project # 13-276

Raleigh, NC
 Indianapolis, IN
 Philadelphia, PA
 Pittsburgh, PA
 Virginia Beach, VA
 Fort Collins, CO
 (919) 858-7420

CONSULTANTS
USFin Development, LLC
 1105 West Weir Street
 Litchfield, IL 62056

REGISTERED PROFESSIONAL ENGINEER
 No. 0300406
 STATE OF INDIANA
 PROFESSIONAL ENGINEER

Drawing Title
SIXTH FLOOR MECHANICAL HVAC PLAN

Approved: Project Director

Project Title
EXPAND SPECIALTY CARE

Project Number
V.A. 583-331

Building Number
1

Location
R. L. Roudebush VAMC, Indianapolis, IN

Date
09-25-15

Checked
RCM

Drawn
ACK

Drawing Number
1-MH101 11FY14

Office of Construction and Facilities Management
VA Department of Veterans Affairs

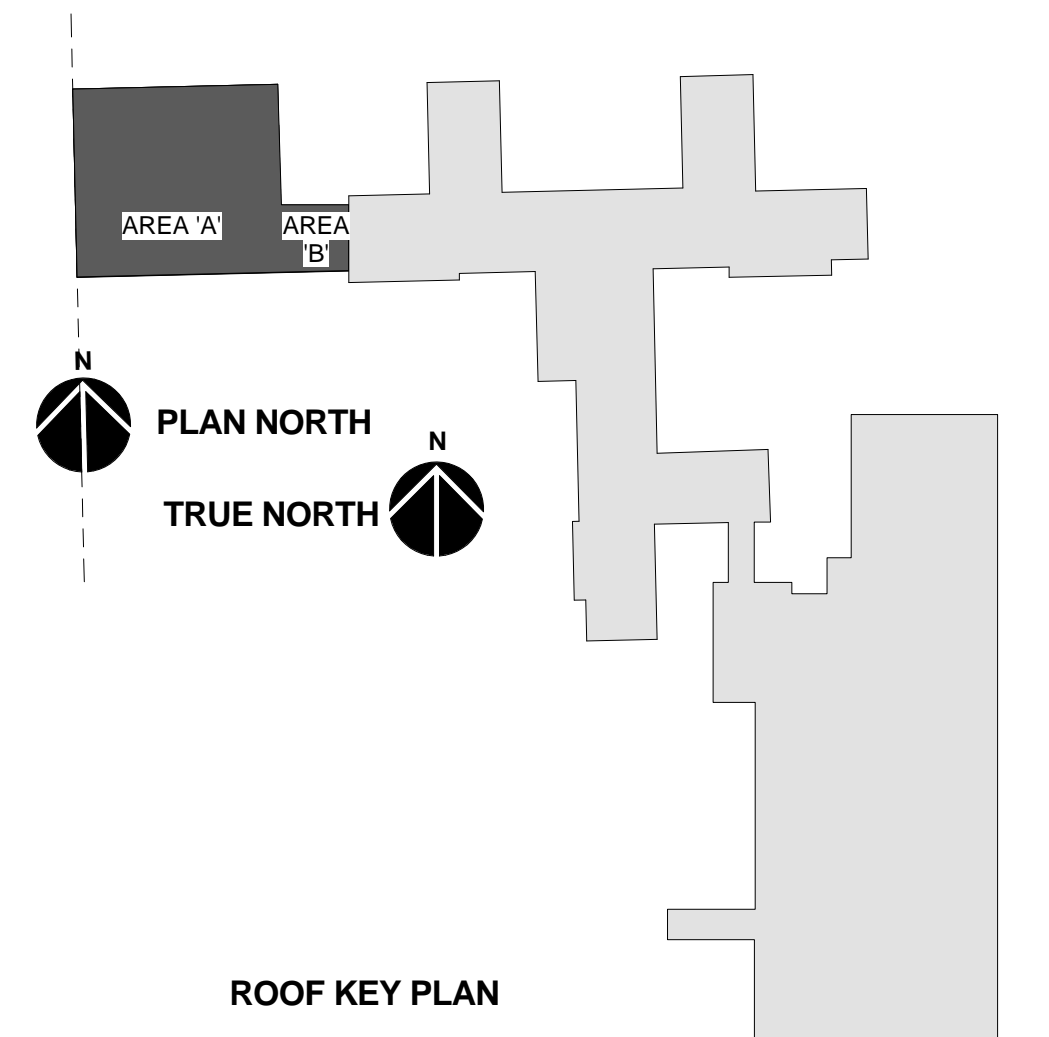
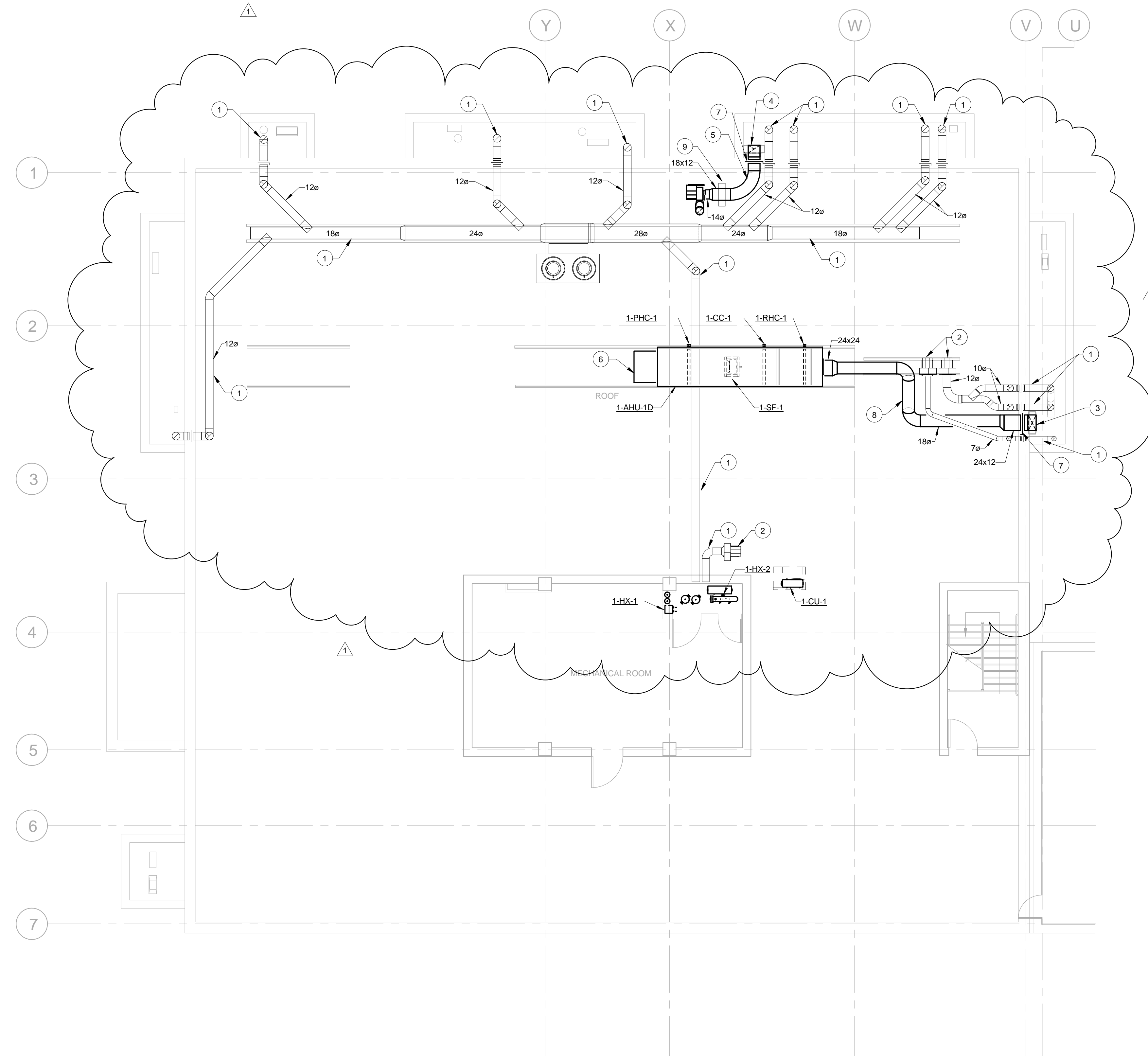
three inches = one foot
 one and one half inches = one foot
 one inch = one foot
 three quarters inch = one foot
 one half inch = one foot
 three eighths inch = one foot
 one quarter inch = one foot
 one eighth inch = one foot

HVAC GENERAL NOTES

- A. COORDINATE ALL WORK WITH THE GENERAL CONTRACTOR, OTHER TRADES, AND THE COR TO MINIMIZE DISRUPTION OF AREAS OUTSIDE OF THE PROJECT LIMITS OF WORK.
- B. TAKE-OFF FOR TERMINAL UNIT SHALL BE SIZED FOR 0.08"/100' P.D. REDUCE TO INLET SIZE BEFORE CONNECTING TO TERMINAL UNIT AT MANUFACTURER'S RECOMMENDED LENGTH. THIS DISTANCE VARIES DEPENDING ON THE INLET SIZE.
- C. UNLESS NOTED OTHERWISE, ALL DIFFUSER AND GRILLE RUN-OUTS ARE THE SAME SIZE AS ITS NECK/DUCT CONNECTION SPECIFIED IN THE AIR DEVICE SCHEDULE.
- D. ALL DIFFUSER AND GRILLE TAKEOFFS SHALL INCLUDE A BALANCING DAMPER.
- E. SEE MECHANICAL PIPING SHEETS FOR THERMOSTAT LOCATIONS FOR EACH TERMINAL UNIT.
- F. COORDINATE LOCATION OF AIR DEVICES (SUPPLY, RETURN, EXHAUST) WITH THE CEILING LAYOUT. MOVE DEVICE TO AN ADJACENT AREA IF A CONFLICT WITH A LIGHT FIXTURE OR SPRINKLER HEAD, IS PRESENT.
- G. SEE 51-M-501 FOR TERMINAL UNIT DUCT CONNECTION DETAIL.
- H. ALL DUCTWORK DOWNSTREAM OF THE VAV BOXES SHALL BE CONSTRUCTED TO 1" W.C. PRESSURE CLASS AND SEAL CLASS A PER SMACNA DUCT CONSTRUCTION STANDARDS. ALL DUCT UPSTREAM SHALL BE CONSTRUCTED TO 3" W.C. PRESSURE CLASS AND SEAL CLASS A PER SMACNA DUCT CONSTRUCTION STANDARDS.
- I. COORDINATE FINAL DIFFUSER AND TERMINAL UNIT LOCATIONS WITH PATIENT LIFTS AND CURTAIN TRACKS TO ALLOW FOR INSTALLATION AND SERVICE CLEARANCE.
- J. ALL RETURN AND EXHAUST DUCTWORK SHALL BE CONSTRUCTED TO 1" W.C. PRESSURE CLASS AND SEAL CLASS A PER SMACNA DUCT CONSTRUCTION STANDARDS.

KEY # NOTE

- 1 EXISTING DUCTWORK TO REMAIN.
- 2 EXISTING EXHAUST FAN TO REMAIN.
- 3 24" X 12" SUPPLY DUCT DOWN TO SIXTH LEVEL. SEE SHEET 1-MH101 FOR CONTINUATION.
- 4 18" X 12" EXHAUST DUCT DOWN TO SIXTH LEVEL. SEE SHEET 1-MH101 FOR CONTINUATION. CONNECT TO FAN WITH FLEXIBLE CONNECTION.
- 5 EXTERNAL INSULATION AND JACKET PER SPECIFICATIONS.
- 6 INTAKE HOOD.
- 7 PROVIDE FIRE DAMPER AND 12" X 12" ACCESS DOOR.
- 8 PROVIDE MISCELLANEOUS STEEL SUPPORTS TO SUPPORT DUCT FROM EXISTING RAILS AND ADJACENT DUCT SUPPORTS. PAINT STEEL SUPPORTS WITH RUST PROOF ENAMEL TO MATCH EXISTING RAILS.
- 9 PROVIDE ROOF EQUIPMENT RAILS TO SUPPORT DUCT OFF OF ROOF.



D WING ROOF MECHANICAL HVAC PLAN
 1/8" = 1'-0"

100% SUBMITTAL
 FULLY SPRINKLERED

REVISIONS		
Revision #	Description	Date
1	RFI #4 ROOF COORDINATION	6-29-16

SUBMISSIONS	
65% DESIGN DEVELOPMENT	1-23-15
95% CONSTRUCTION DOCUMENTS	2-25-15
100% SUBMITTAL DOCUMENTS	5-29-15
BID DOCUMENTS	9-25-15

VA United States Department of Veterans Affairs
 R. L. Roudebush VAMC
 1481 West 10th Street
 Indianapolis, Indiana 46202

ARCHITECT/ENGINEERS:

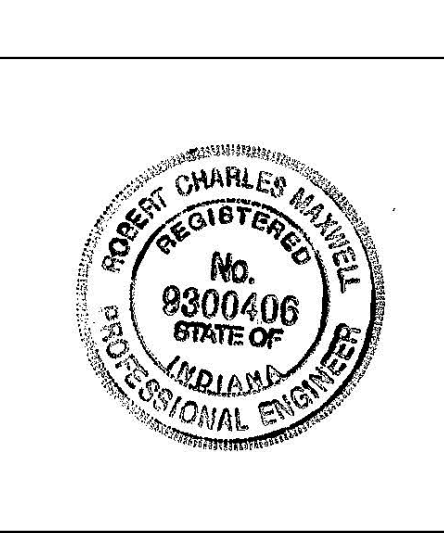
STRUCTUREPOINT
 AMERICAN
 7260 SHADELAND STATION
 INDIANAPOLIS, IN 46256-3957
 TEL 317.547.5580 FAX 317.543.0270
 www.structurepoint.com

APOGEE
 Consulting Group
 www.acg-pa.com
 Apogee Project # 13-276

Raleigh, NC
 Indianapolis, IN
 Philadelphia, PA
 Pittsburgh, PA
 Virginia Beach, VA
 Fort Collins, CO
 (919) 858-7420

CONSULTANTS

USFin Development, LLC
 1105 West Weir Street
 Litchfield, IL 62056



Drawing Title D WING ROOF MECHANICAL HVAC PLAN
Approved: Project Director

Project Title EXPAND SPECIALTY CARE	Project Number V.A. 583-331
Location R. L. Roudebush VAMC, Indianapolis, IN	Building Number 1
Date 09-25-15	Checked RCM
Drawn ORD	Drawing Number 1-MH103 11FY14

Office of Construction and Facilities Management

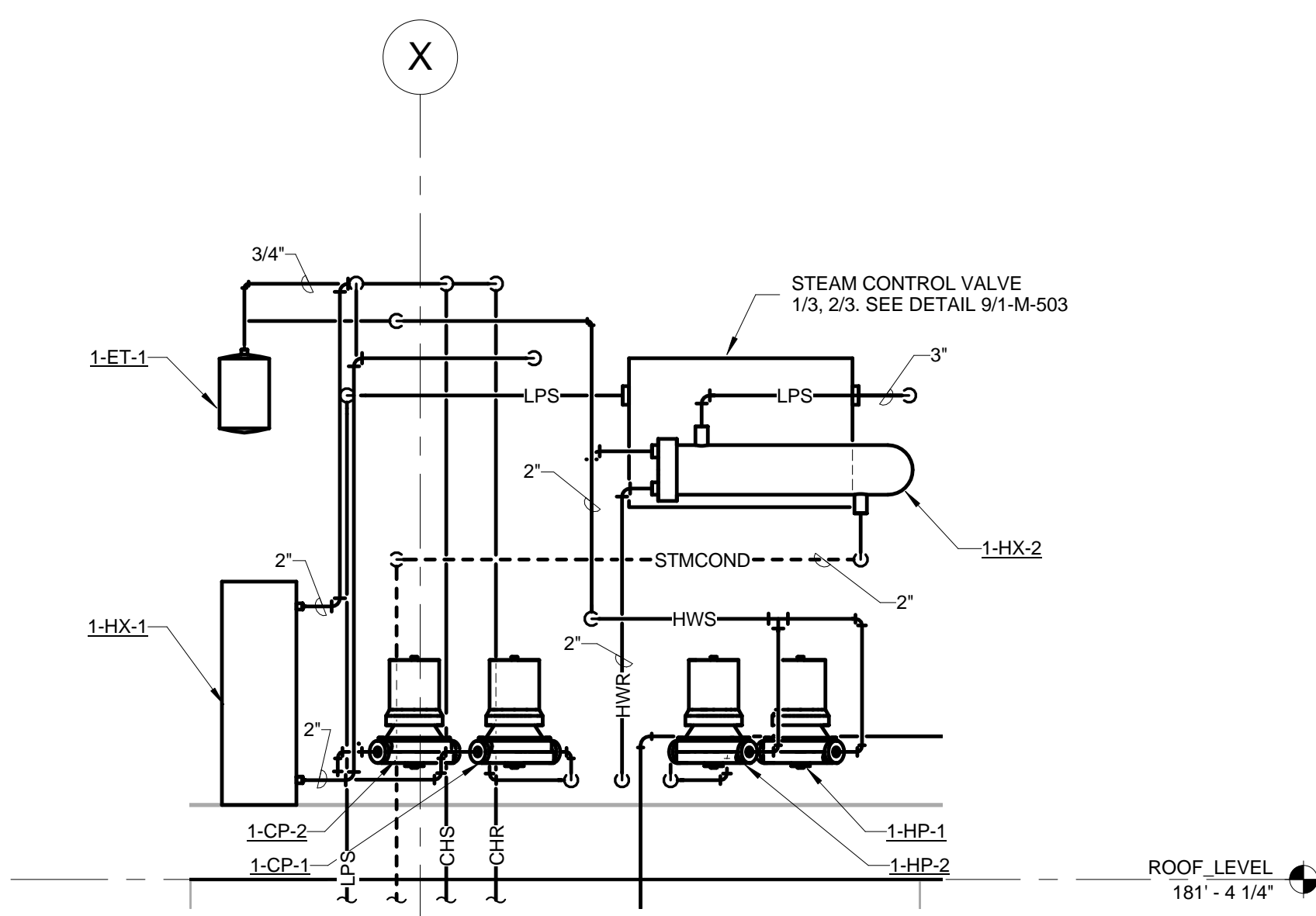
VA Department of Veterans Affairs

HYDRONIC GENERAL NOTES

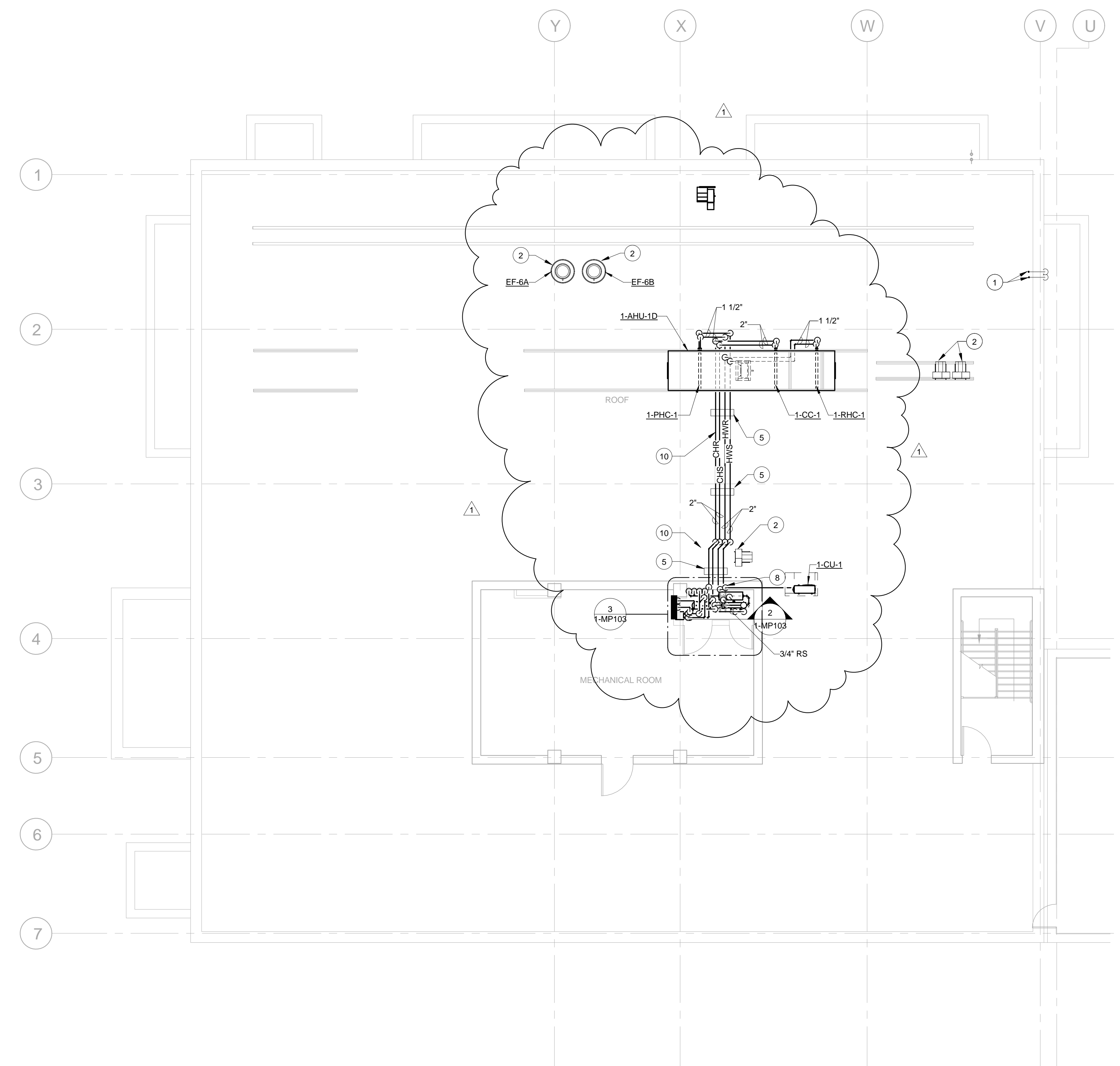
- A. COORDINATE ALL WORK WITH THE GENERAL CONTRACTOR, OTHER TRADES, AND THE COR TO MINIMIZE DISRUPTION OF AREAS OUTSIDE OF THE PROJECT LIMITS OF WORK.
- B. ALL HWS/R RUNOUTS TO TERMINAL UNITS SHALL BE 3/4" AND CONNECTED TO COIL UNLESS NOTED OTHERWISE.
- C. SEE 8/1-M-501 FOR TERMINAL UNIT COIL CONNECTION DETAIL.
- D. COORDINATE ALL THERMOSTAT LOCATIONS WITH ALL OTHER WALL MOUNTED OBJECTS BEFORE INSTALLATION.

KEY # NOTE

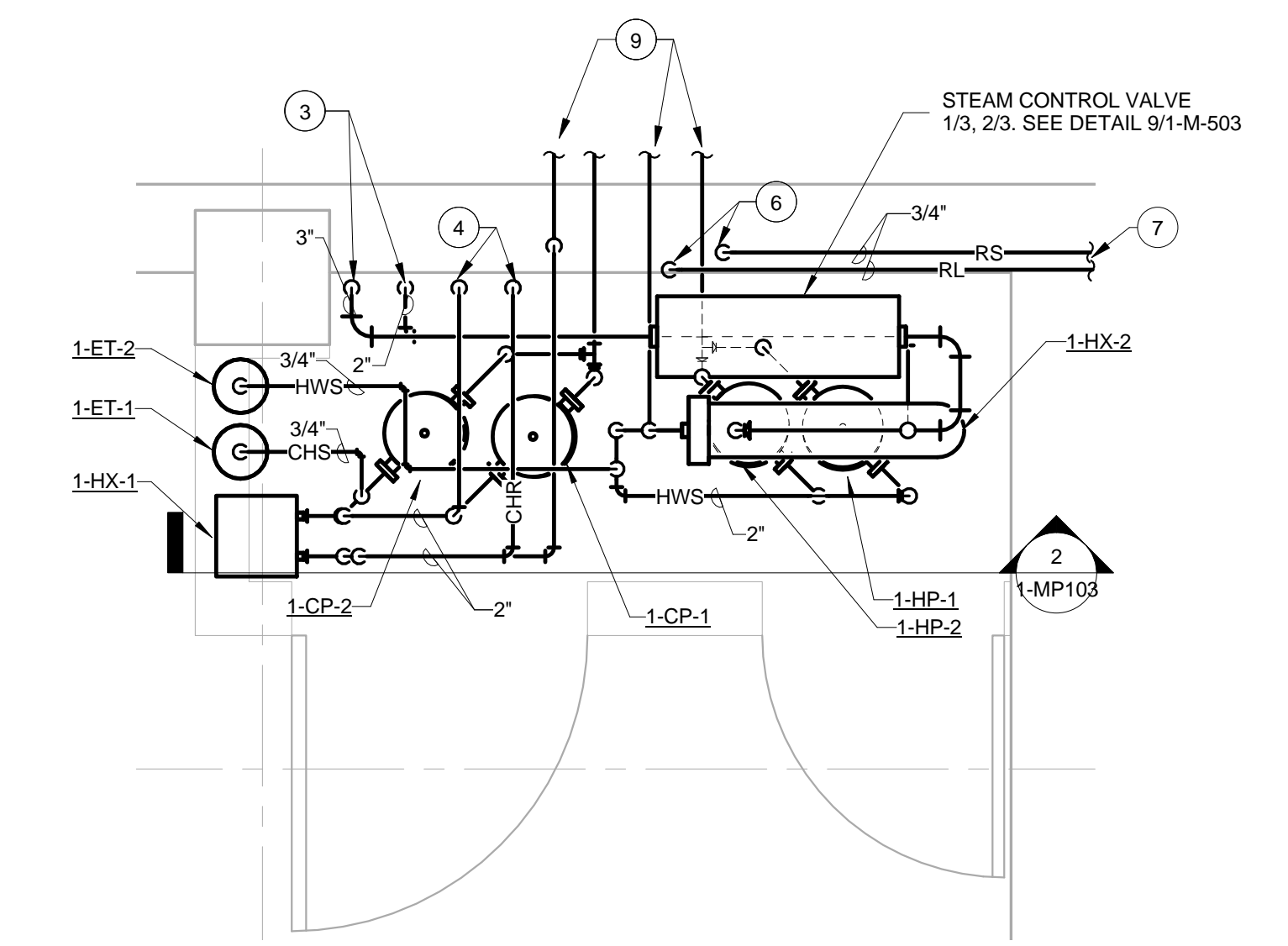
- 1 CAP EXISTING PIPE.
- 2 EXISTING EXHAUST FAN TO REMAIN.
- 3 3" LPS AND 2" STEAM CONDENSATE DOWN. SEE MP101 FOR CONTINUATION.
- 4 2" CWS AND CWR DOWN. SEE MP101 FOR CONTINUATION.
- 5 COMPOSITE ROOF SUPPORTS @ 10' - 0" ON CENTER ON EXISTING ROOF. COORDINATE WITH DIVISION 26 ALSO.
- 6 OFFSET REFRIGERANT PIPE IN CHASE BELOW PENTHOUSE FLOOR TO EXTERIOR WALL.
- 7 REFRIGERANT PIPE TO 1-CU-1. SEE 1/1-MP103 FOR CONTINUATION.
- 8 LIQUID AND SUCTION REFRIGERANT LINES DOWN. SEE 1/1-MP101 FOR CONTINUATION.
- 9 CHS, CHR, HWS, AND HWR PIPES TO AIR HANDLING UNIT. SEE 1/1-MP103 FOR CONTINUATION.
- 10 COORDINATE PIPING WITH EXISTING DUCTWORK AND FANS IN THIS AREA.



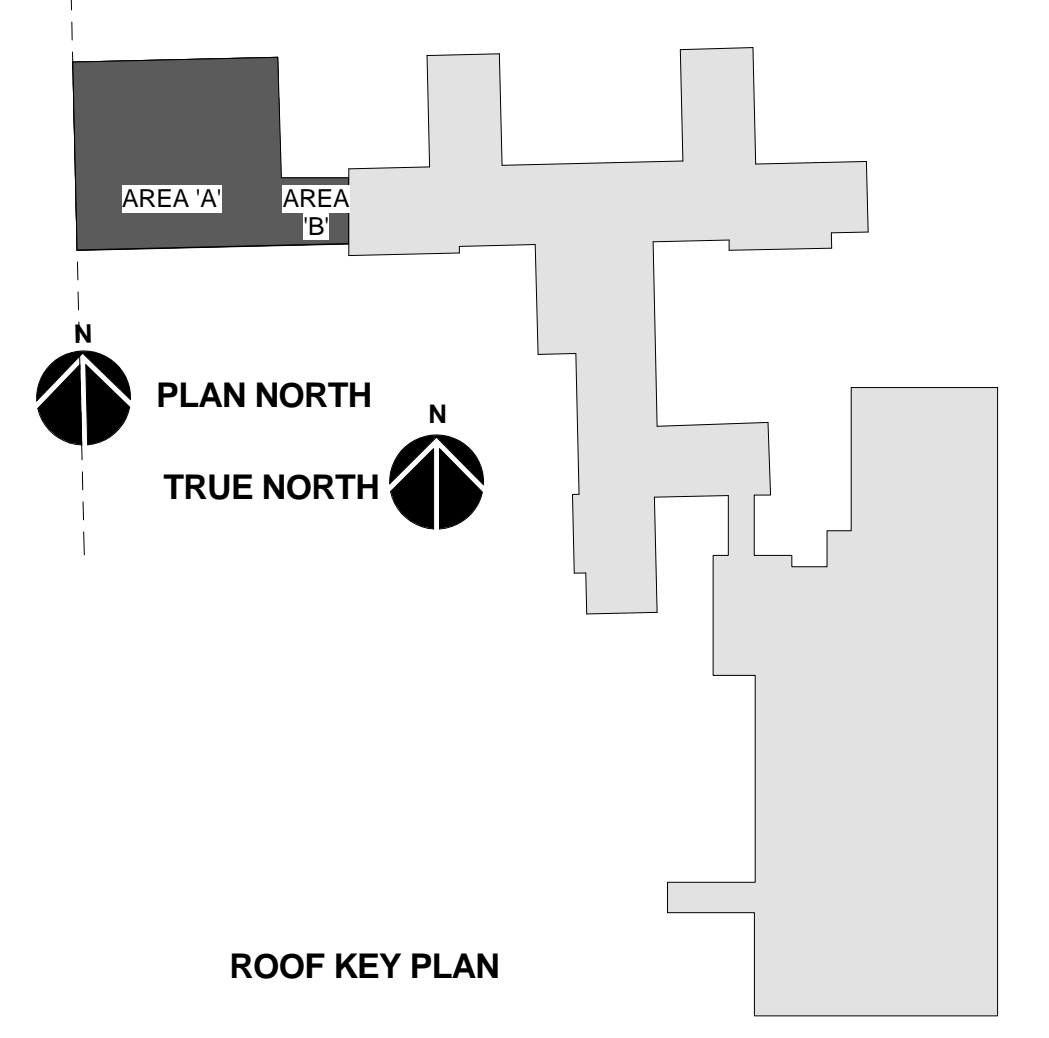
2 PENTHOUSE HYDRONIC SECTION
1/2" = 1'-0"



1 D WING ROOF MECHANICAL PIPING PLAN
1/8" = 1'-0"



3 ENLARGED MECHANICAL PENTHOUSE CLOSET
1/2" = 1'-0"



100% SUBMITTAL
FULLY SPRINKLERED

REVISIONS		
Revision #	Description	Date
1	RFI #4 ROOF COORDINATION	6-29-16

SUBMISSIONS		
Percentage	Description	Date
65%	DESIGN DEVELOPMENT	1-23-15
95%	CONSTRUCTION DOCUMENTS	2-25-15
100%	SUBMITTAL DOCUMENTS	5-29-15
	BID DOCUMENTS	9-25-15

VA United States Department of Veterans Affairs
R. L. Roudebush VAMC
1481 West 10th Street
Indianapolis, Indiana 46202

ARCHITECT/ENGINEERS:

AMERICAN STRUCTUREPOINT
7260 SHADELAND STATION
INDIANAPOLIS, IN 46256-3957
TEL 317.547.5580 FAX 317.543.0270
www.structurepoint.com

APOGEE
Consulting Group
www.acg-pa.com
Apogee Project # 13-276

Raleigh, NC
Indianapolis, IN
Philadelphia, PA
Pittsburgh, PA
Virginia Beach, VA
Fort Collins, CO
(919) 858-7420

CONSULTANTS

USFin Development, LLC
1105 West Weir Street
Litchfield, IL 62056



Drawing Title
D WING ROOF MECHANICAL PIPING PLAN

Approved: Project Director

Project Title
EXPAND SPECIALTY CARE

Location
R. L. Roudebush VAMC, Indianapolis, IN

Date
09-25-15

Checked
RCM

Drawn
ORD

Project Number
V.A. 583-331

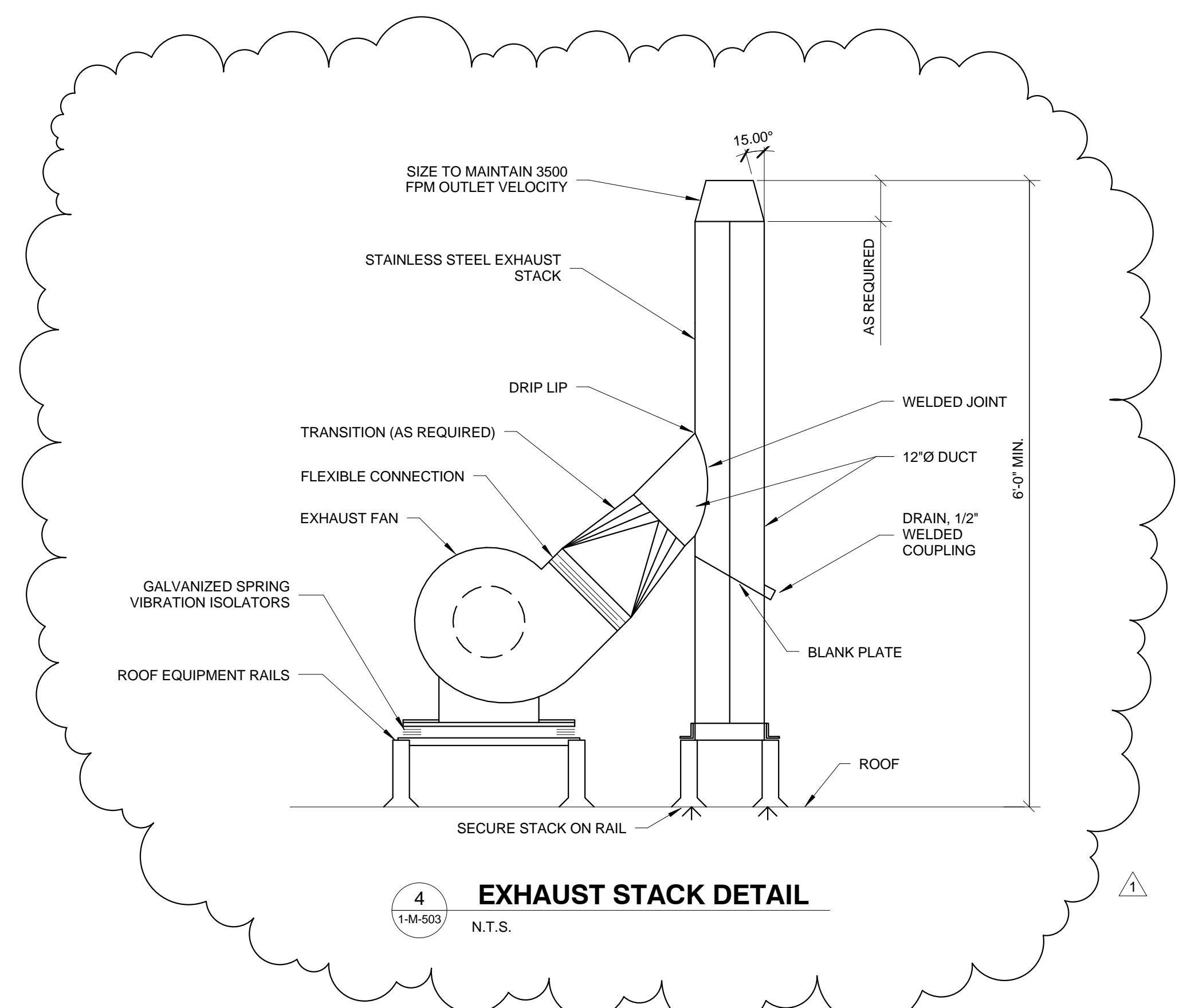
Building Number
1

Drawing Number
1-MP103
11FY14

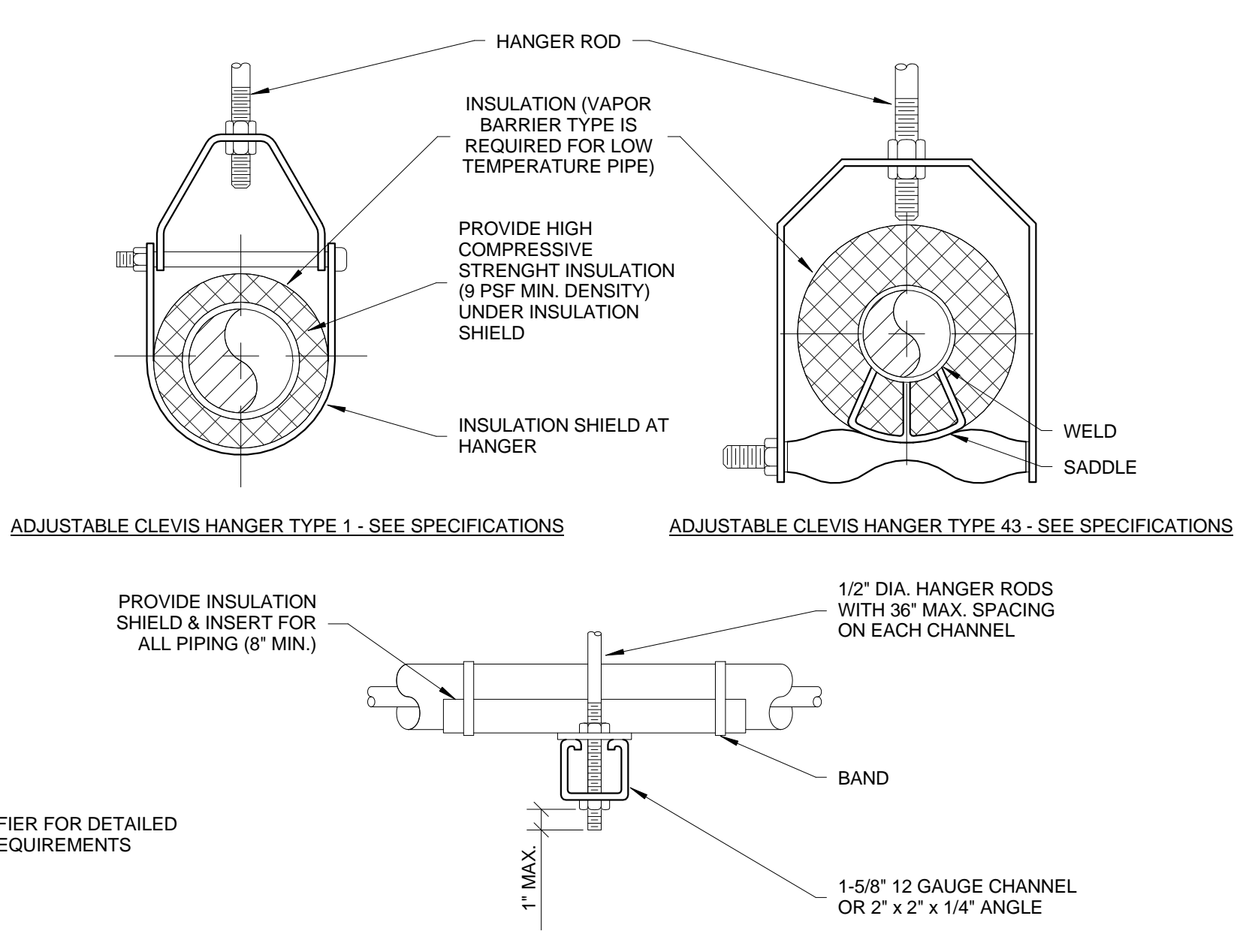
Office of Construction and Facilities Management

VA Department of Veterans Affairs

6/28/2016 11:23:38 AM C:\Users\skumar\Documents\13-276 Mech Central Bldg 1_wgamer.rvt



4 EXHAUST STACK DETAIL
1-M-503 N.T.S.

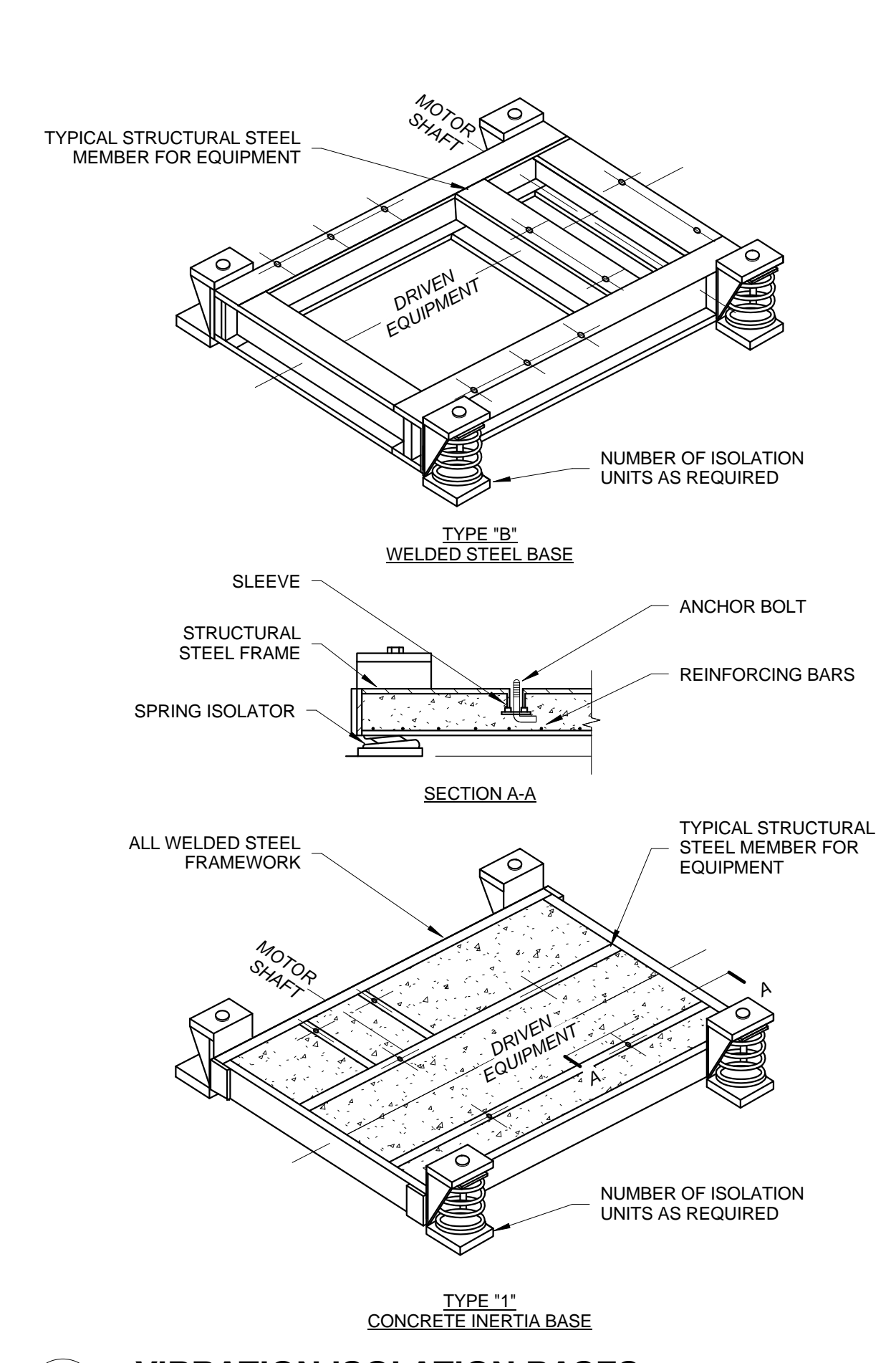


MAXIMUM PIPE/TUBING SUPPORT SPACING

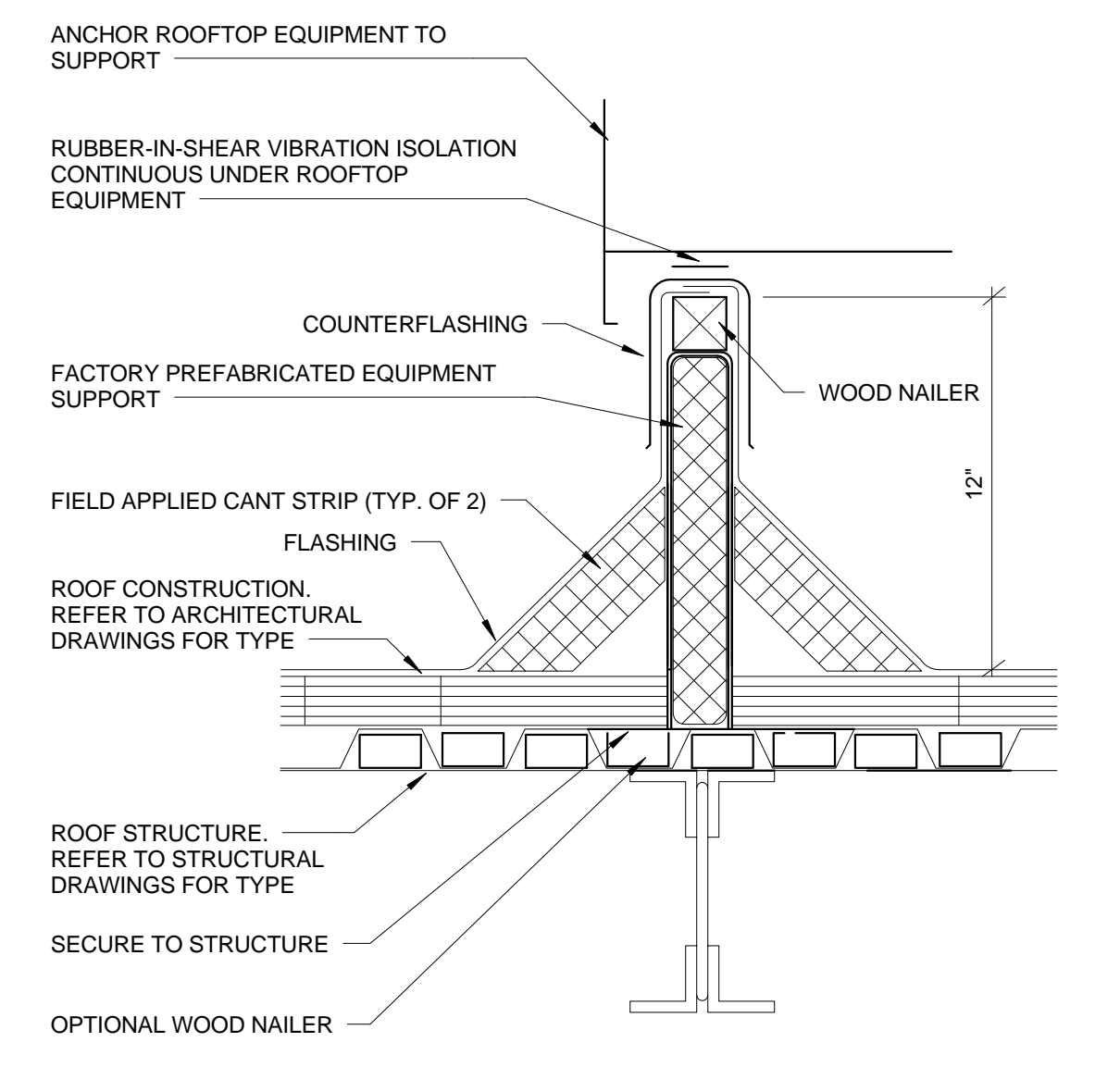
NOM. SIZE (IN.)	THRU 3/4	1	1 1/4	1 1/2	2	2 1/2	3	4	5	6	8	10	12	14	16	18	20	24
PIPE (FT.)	7	7	7	9	10	11	12	14	16	17	19	22	23	25	27	28	30	32
TUBING (FT.)	5 FT	6	7	8	8	9	10	12	13	14	16	-	-	-	-	-	-	-

NOTE: FOR TRAPEZE HANGER TAKE SPACING OF SMALLEST SIZE ON TRAPEZE

3 PIPE HANGERS
1-M-503 N.T.S.

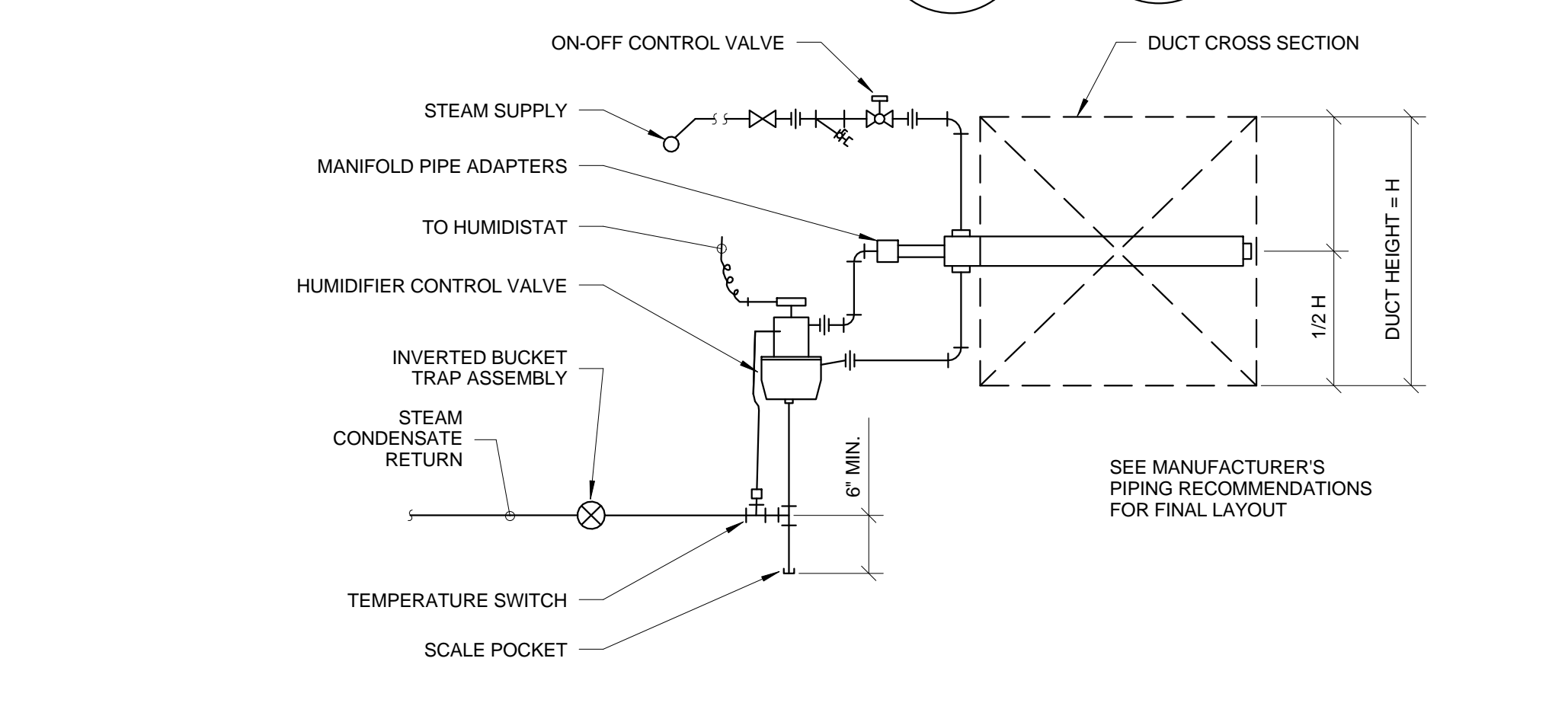


2 VIBRATION ISOLATION BASES
1-M-503 N.T.S.

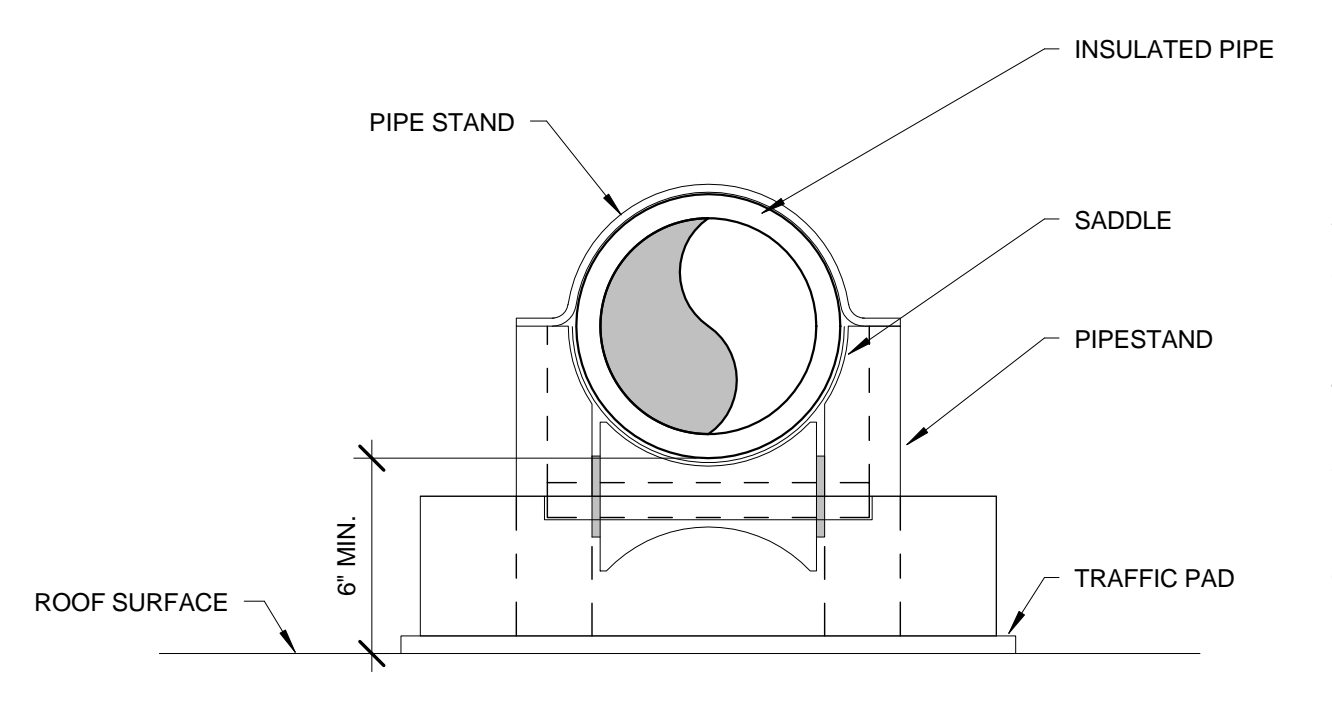


- NOTES:
- EQUIPMENT SUPPORTS SHALL BE PROVIDED WITH PROPERLY DESIGNED FABRICATED LEVELING DEVICES SO EQUIPMENT IS LEVEL AND THE ROOF CURB IS INSTALLED TO MATCH ROOF SLOPE.
 - PROVIDE PERIMETER ANGLE SUPPORT AT ALL SIDES BETWEEN STRUCTURAL STEEL SIZE OF ANGLE BASED ON LOAD OF EQUIPMENT. MINIMUM SIZE SHALL BE 3" X 3" X 1/4".
 - ROOF CURBS SHALL NOT BE SUPPORTED FROM THE ROOF INSULATION.
 - COORDINATE LOCATION OF ROOF CURB AND ROOF OPENING WITH STRUCTURE.
 - ROOFING INSULATION SHALL BE CONTINUOUS UNDER THE ROOFTOP EQUIPMENT.

1 ROOF EQUIPMENT SUPPORT DETAIL
1-M-503 1/8" = 1'-0"

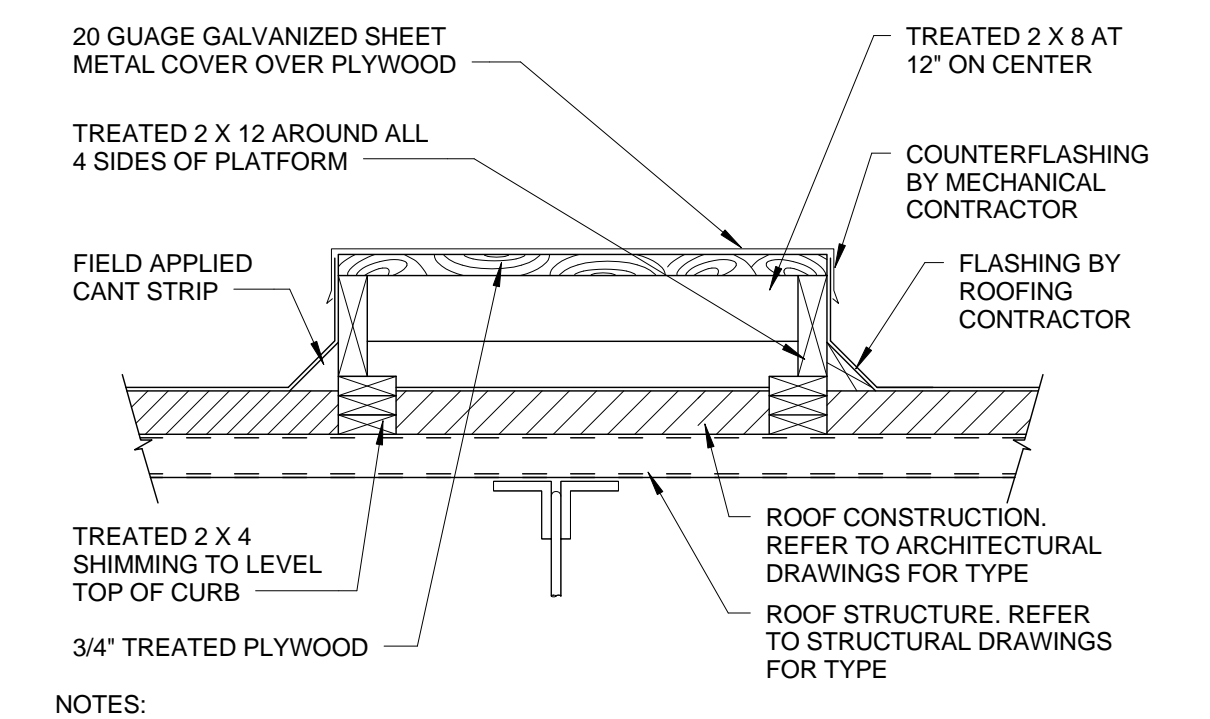


7 STEAM HUMIDIFIER DETAIL
1-M-503 N.T.S.



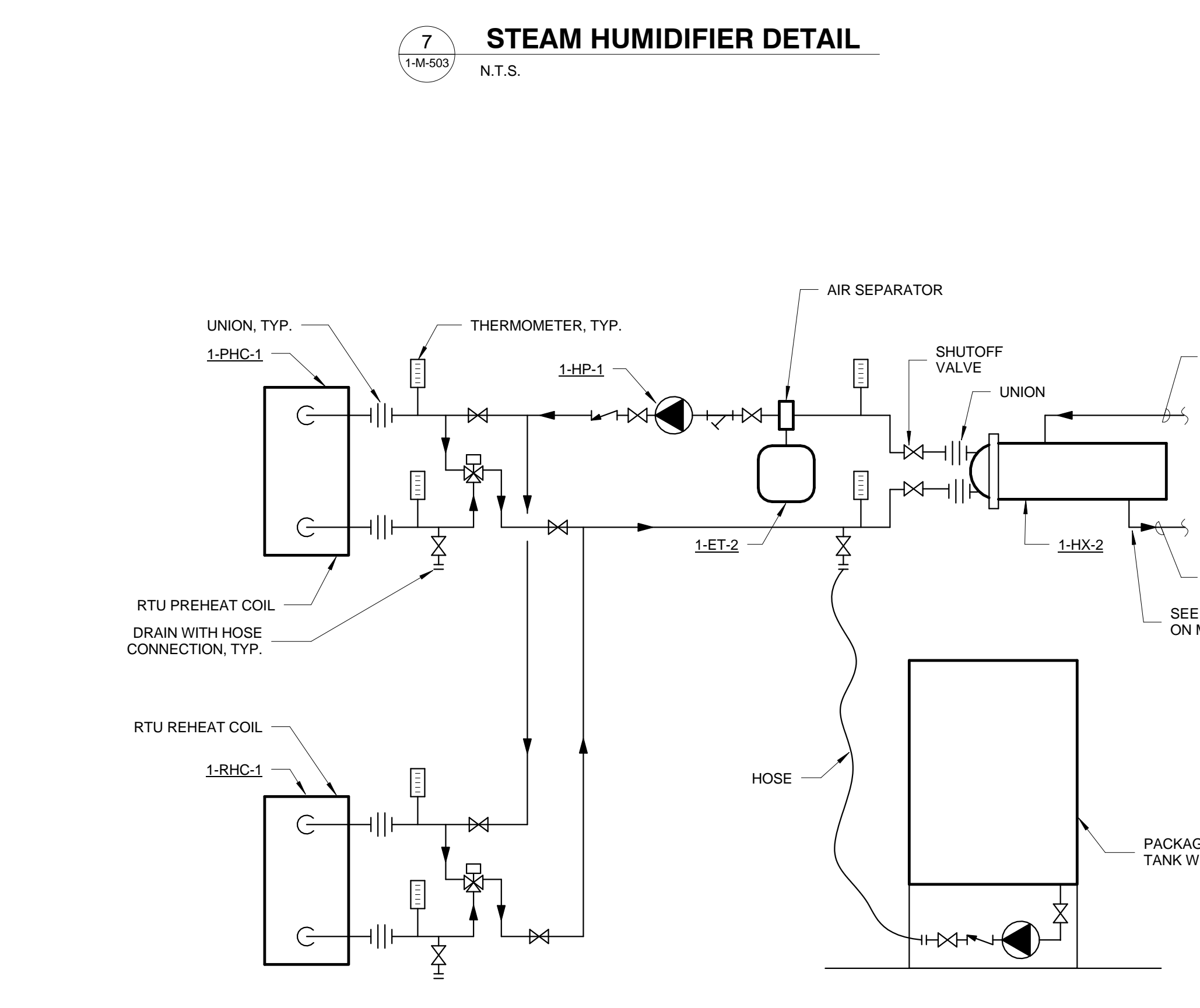
6 ROOFTOP PIPESTAND DETAIL
1-M-503 1/8" = 1'-0"

- PLAN NOTES:
- PIPESTAND MIRO MODEL NO. 3-R WITH ROLLER.
 - PROVIDE SADDLE UNDER INSULATED PIPE.
 - INSTALL PIPE STRAP USING #10 STAINLESS STEEL SCREWS PER UNIT MFR RECOMMENDATION. PROVIDE LOOSE INSTALLATION TO PROVIDE FREE MOVEMENT.
 - SPACE PIPESTANDS TO OBTAIN A MAX. LOAD WEIGHT OF 100 LBS. PER PIPE STAND. MAX. SPACING SHALL BE 10'.
 - INSTALL MIRO MODEL NO. 3-R SPACERS AS REQUIRED TO PROVIDE MIN. 6" CLEARANCE BETWEEN ROOF SURFACE AND BOTTOM OF PIPE INSULATION.
 - INSTALL TRAFFIC PAD OR MIRO DECK PLATE BELOW EACH PIPESTAND TO ACHIEVE EVEN LOAD WEIGHT AT ALL PIPESTANDS.

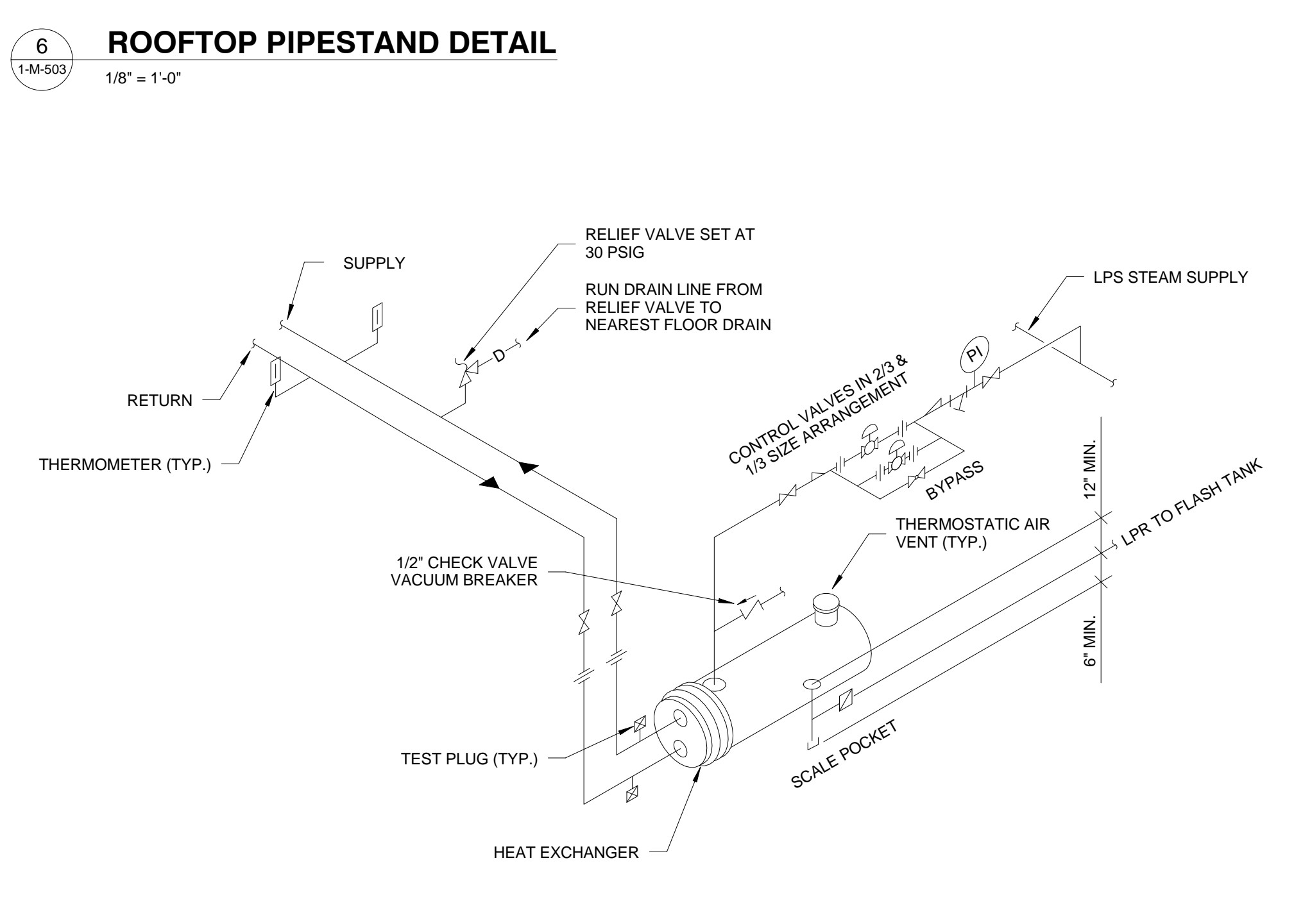


- NOTES:
- ROOF PLATFORMS SHALL BE PROVIDED WITH PROPERLY DESIGNED FABRICATED LEVELING DEVICES.
 - ROOF CURBS SHALL NOT BE SUPPORTED FROM THE ROOF INSULATION.
 - ROOFING INSULATION SHALL BE CONTINUOUS UNDER THE PLATFORM.

5 ROOF PLATFORM DETAIL
1-M-503 1/8" = 1'-0"

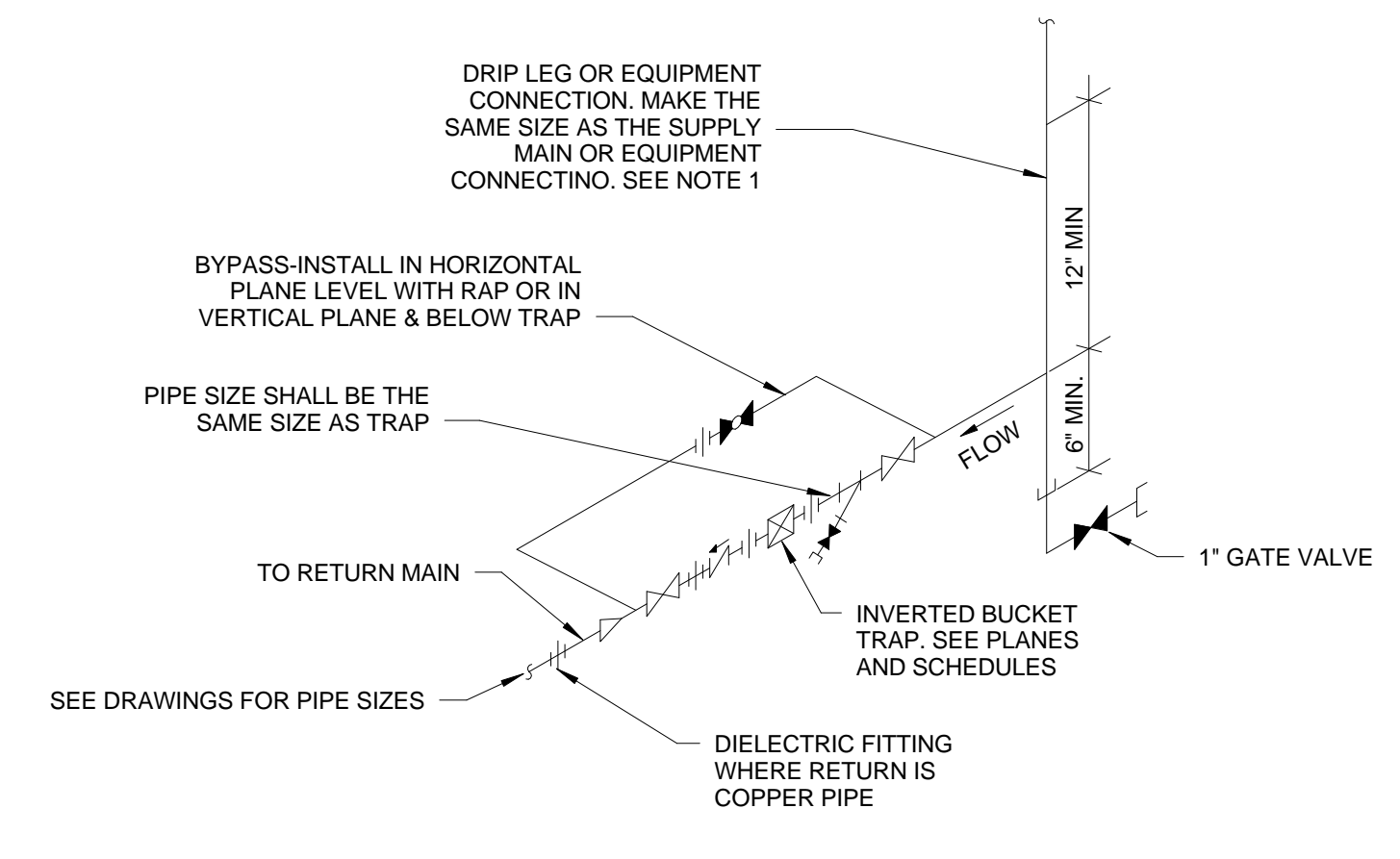


8 GLYCOL SYSTEM DETAIL
1-M-503 N.T.S.



- NOTES:
- PROVIDE SADDLE SUPPORTS AND LEGS OR HANGERS FOR HEAT EXCHANGER. MOUNTING HEIGHT TO SHALL BE ADJUSTED TO FACILITATE GRAVITY RETURN OR STEAM CONDENSATE.
 - MAKE THE BYPASS THE SAME SIZE AS THE CONNECTIONS TO THE CONTROL VALVES.
 - CONTROL VALVES SHALL BE IN A 1/3 AND 2/3 SIZE ARRANGEMENT.

9 HEAT EXCHANGER - STEAM TO HOT WATER
1-M-503 N.T.S.



- NOTES:
- ALL DRIP POINTS ON STEAM MAINS SHALL BE PROVIDED WITH A 10" MINIMUM HIGH DRIP LEG FROM THE BOTTOM OF STEAM MAIN TO TRAP INLET. DRIP LEG SHALL HAVE 6" SCALE POCKET BELOW TRAP INLET.
 - PROVIDE BYPASS PIPING.

10 INVERTED BUCKET STEAM TRAP ASSEMBLY
1-M-503 N.T.S.

REVISIONS

Revision #	Description	Date
1	RFI #4 ROOF COORDINATION	6-29-16

SUBMISSIONS

65% DESIGN DEVELOPMENT	1-23-15
95% CONSTRUCTION DOCUMENTS	2-25-15
100% SUBMITTAL DOCUMENTS	5-29-15
BID DOCUMENTS	9-25-15

VA United States Department of Veterans Affairs
R. L. Roudebush VAMC
1481 West 10th Street
Indianapolis, Indiana 46202

ARCHITECT/ENGINEERS:
AMERICAN STRUCTUREPOINT
7260 SHADELAND STATION
INDIANAPOLIS, IN 46256-3957
TEL 317.547.5580 FAX 317.543.0270
www.structurepoint.com

APOGEE Consulting Group
www.apogee.com
Apogee Project # 13-276

Raleigh, NC
Indianapolis, IN
Philadelphia, PA
Pittsburgh, PA
Virginia Beach, VA
Fort Collins, CO
(919) 858-7420

CONSULTANTS
WPD DESIGN
USFin Development, LLC
1105 West Weir Street
Litchfield, IL 62056

Drawing Title
MECHANICAL DETAILS

Approved: Project Director

Project Title
EXPAND SPECIALTY CARE

Project Number
V.A. 583-331

Building Number
1

Location
R. L. Roudebush VAMC, Indianapolis, IN

Date
09-25-15

Checked
RCM

Drawn
ACK

Drawing Number
1-M-503
11FY14

Office of Construction and Facilities Management
VA Department of Veterans Affairs

100% SUBMITTAL FULLY SPRINKLERED