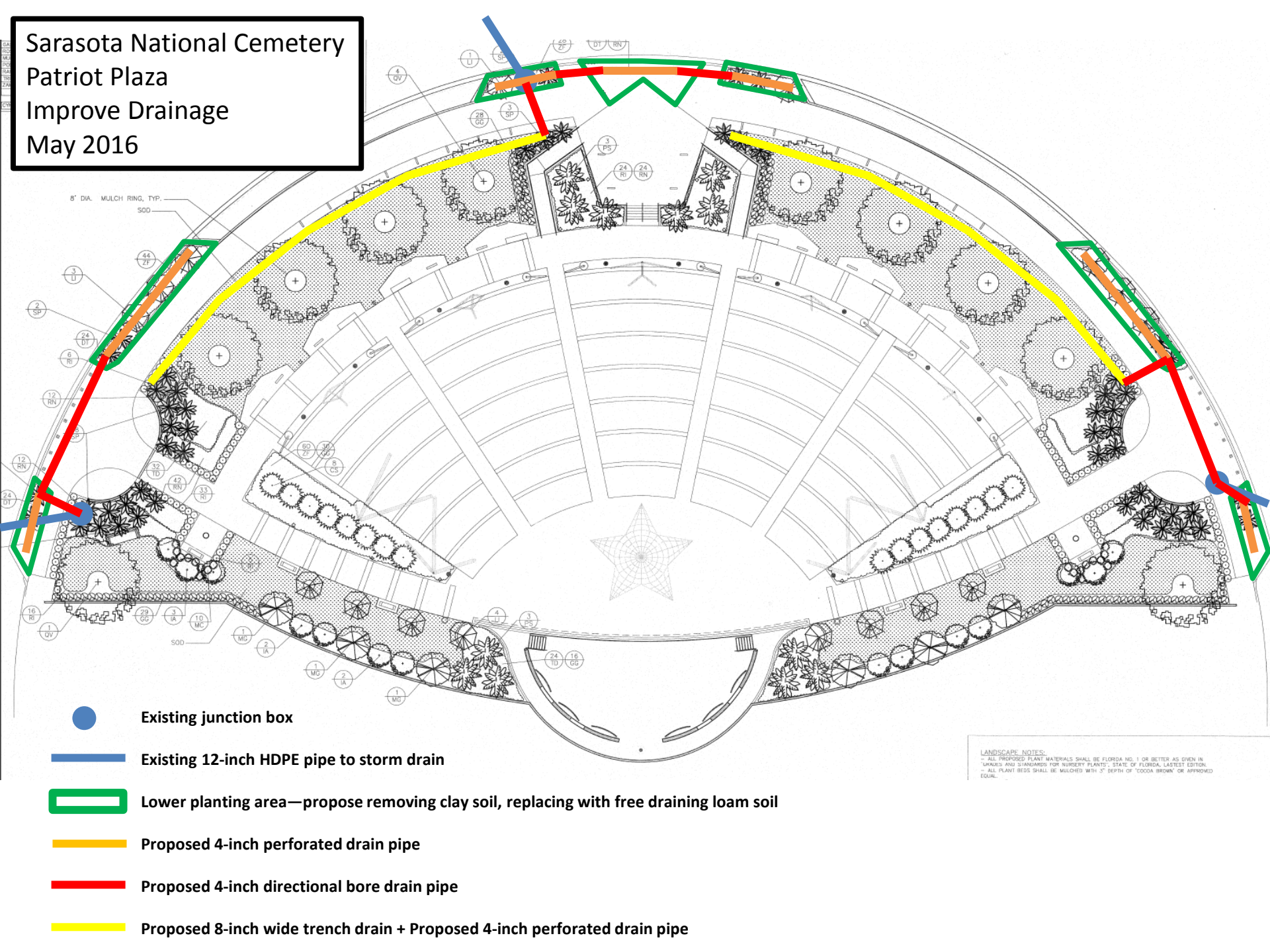


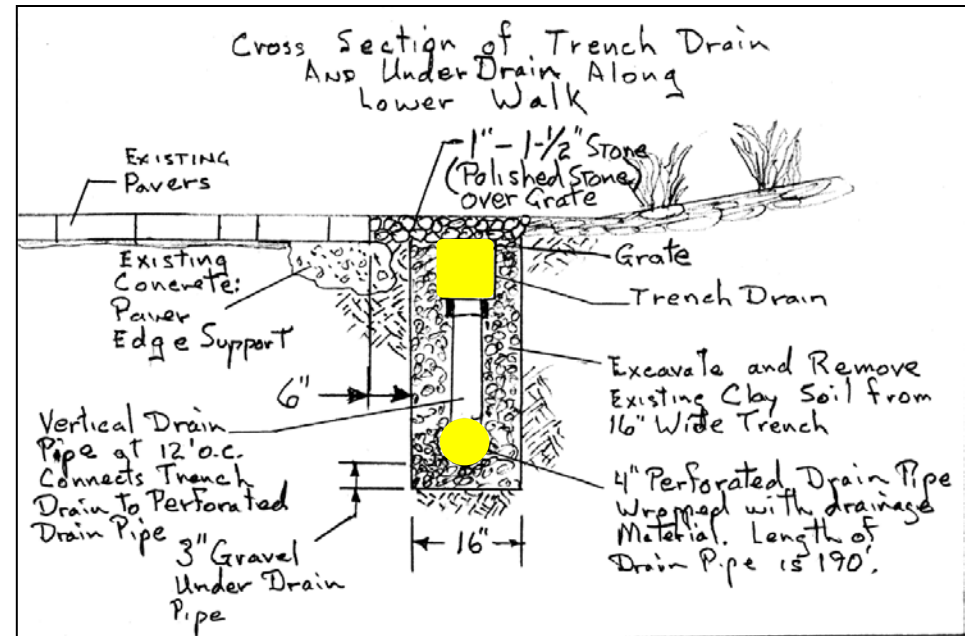
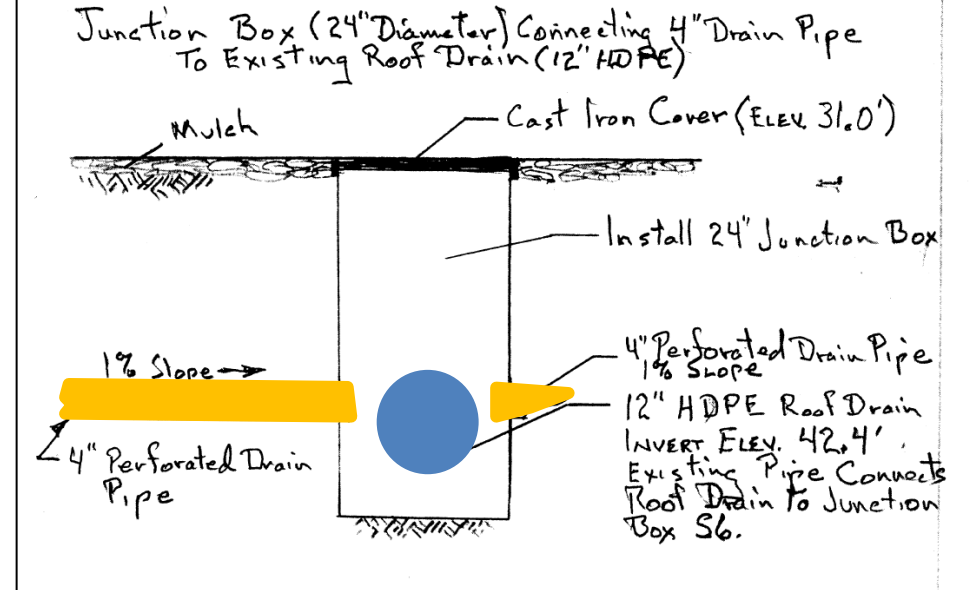
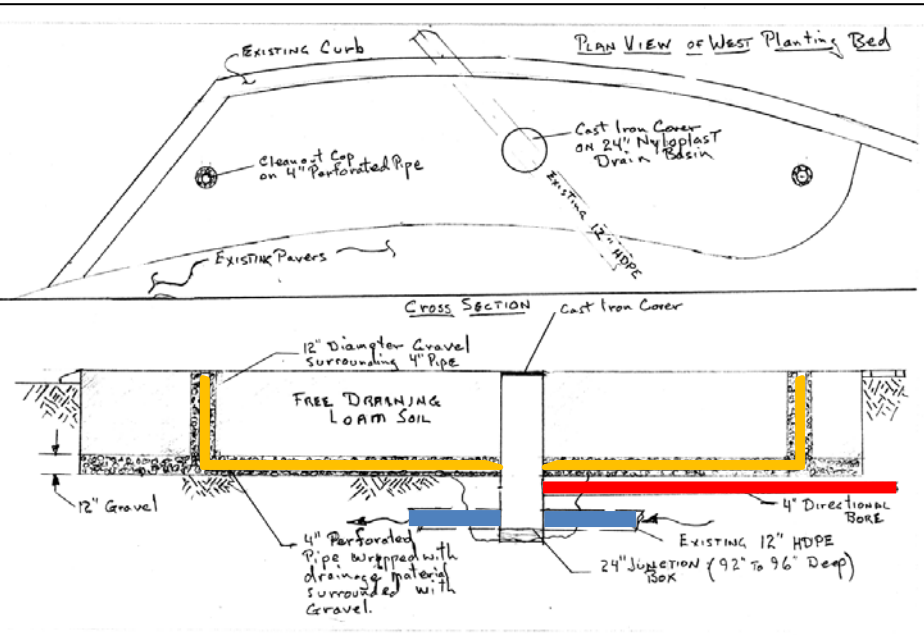
GAL
RO
MU
PO
RA
TR
ZAM
CY



**LANDSCAPE NOTES:**

- ALL PROPOSED PLANT MATERIALS SHALL BE FLORIDA NO. 1 OR BETTER AS GIVEN IN "GRADES AND STANDARDS FOR NURSERY PLANTS", STATE OF FLORIDA, LATEST EDITION.
- ALL PLANT BEDS SHALL BE MULCHED WITH 3" DEPTH OF "COCOA BROWN" OR APPROVED EQUAL.

**Sarasota National Cemetery**  
**Patriot Plaza**  
**Improve Drainage**  
**Proposed Typical Cross Sections**  
**May 2016**



- Existing 12-inch HDPE pipe to storm drain
- Proposed 4-inch perforated drain pipe
- Proposed 4-inch directional bore drain pipe
- Proposed 8-inch wide trench drain + Proposed 4-inch perforated drain pipe