

**SECTION 28 23 00
VIDEO SURVEILLANCE**

VA TVHS Video Security Systems

CCTV Monitoring and Patient Monitoring

System requirements

Department of Veterans Affairs Physical Security Design Manual (PSDM) January 2015 requirements link below.

<http://www.cfm.va.gov/til/PhysicalSecurity/dmPhySecAppAc.pdf>

Security Door Opening Matrix in Appendix A should be consulted for VA PIV PACS and IDS requirements. Where there is a choice for using Electric Strikes vs Magnetic Locks: The Electric Strike shall be used.

Applicable technical references

VA Handbook 0730 (latest edition)

US Department of Veterans Affairs Office of Construction & Facilities Management Standards for construction. <http://www.cfm.va.gov/til/>

The TIA/EIA Standard (latest edition)

Any Questions should be directed in writing to project contracting officer's representative (COR)

Video Systems Equipment

Closed Circuit Television System (CCTV)

Camera specifications: American Dynamics, Illustra 610 Indoor HD 1080p minidome, TDN, WDR, 3-9mm varifocal, PoE, white, clear dome and Outdoor/Indoor HD1080p minidome, TDN, WDR, 9-40mm lens, vandal resistant, PoE heater. Or equal.

Wiring/Cable specifications: 24-4P UTP-CMP SOL BC CAT5E FRPO/FEP/FRLSPVC GRAY (plenum rated) 500FT BOX NONBONDED-PAIR

Digital Video Recorder (DVR) American Dynamics. DVR will be rack mountable and will reside in existing standard 19" IT Network Rack by others.

UPS information: SMART-UPS 1500VA RACKMOUNT 2U LINE-INTERACTIVE BLACK USB

All systems must be capable of Seamless integration and operation with TVHS existing Software House C-cure 900 PACS system.

Nashville VAMC
VA: 626-15-103 - Renovate 4 North
Nashville, TN
CMTA Project - VNN15

Bid Set
March 11, 2016

All video cameras located in the "In-Patient" section of the project are to be vandal resistant.

Patient Monitoring System

Provide two IP cameras to provide coverage of the Seclusion Room one IP camera in the Telecourt/Family Room, one IP camera in Meditation Room and one IP camera in the Dining Room. These cameras shall be provided with video decoders and monitors at two Nurse's Stations. These cameras shall be dual streamed to the nurse's stations in live real-time without a means to record. These cameras shall not be connected into facility Electronic Safety and Security Video Management System.

Approved system components

Refer to appendix.

Typical installation drawings

Refer to appendix.

Police Service Security Contact

Mr. Hall Jenkins
Electronics Engineer/
Security Systems Specialist
Police Service (07)
Tennessee Valley Healthcare System
l.jenkins@va.gov
Cell: (615) 456-9840

Vendor Information

The existing TVHS Physical Access Control System (PACS) is currently under an in-place, on-site maintenance contract for all components and devices connected to the TVHS PACS. Existing warranties must be maintained for connection of all new equipment.

Contacts

Phil Williams / Tyco Regional Account Manager/ Federal Systems Division, Global Center of Excellence/ Tel: +1 205 948 2808 / Mobile: +1 205 559-1552 / Fax 205 948 2890
1800 International Park Drive, Suite 500 / Birmingham, AL 35243 / USA pwilliams@tyco.com / www.tyco.com / AESBL Lic #1667
John P Latreille // Commercial Sr. Account Executive // Tyco Integrated Security
2005 Elm Hill Pike // Nashville, TN 37210 // USA
Mobile: 931.384.0163(best) // Office: 615.493.5491
jlatreille@tyco.com // www.tycois.com

Appendix

SOFTWARE HOUSE

From Tyco Security Products

C•CURE 9000 Security and Event Management System



Features That Make a Difference:

- **NEW!** Visitor management web portal for appointment management that expedites the visitor check-in/out process at the front desk
- **NEW!** Conditional Access and Dynamic Area Management for areas needing supervised entry and occupancy for increased security
- **NEW!** Open Supervised Device Protocol (OSDP) support for reader to panel communications on iSTAR Ultra series controllers
- **NEW!** Increased capacity support up to 5,000 readers per single server and 40 Satellite Application Server scalability for Enterprise systems
- **NEW!** Enterprise multi-version software upgrades remain operational while progressively upgrading each server node without needing to take an entire system out of service
- **NEW!** Special Edition iSTAR Ultra SE and new IP-ACM Ethernet door module support
- BACnet/IP interface for supervisory monitoring and control of building automation devices
- Administer and monitor C•CURE 9000 remotely with C•CURE Go mobile app for iOS and Android
- Custom query builder & report designer for journal, audit and configuration database reporting
- Software House Connected Partner Program with access to Web Services API and SDK kits for supporting standards-based integrations

Powerful and Flexible Security Management

C•CURE 9000 is one of the industry's most powerful and flexible security management systems.

Monitor events, manage personnel, create reports, display dynamic views and monitor system activity anywhere in the world directly from your PC using the full C•CURE client, the web client or on the move with C•CURE Go mobile app.

Information and Event Management at its Best

Describing C•CURE 9000 as an access control system is an enormous understatement. The way in which you are able to manage credentials and privileges is what sets C•CURE 9000 apart.

- Area Control and Occupancy Management allow you to enforce global anti-passback, define occupancy restrictions and lock down procedures in sensitive or classified areas
- Intrusion Zones and Keypad Commands provide additional verification requirements and duress triggers
- Dynamic Views and Editable Maps serve up critical information in a customizable way, all while allowing you to find, manage, and acknowledge significant incidents on user-defined floor plans
- Intuitive Badging and Smart Card Enrollment

Unified Access Control and Video Experience

As an option, you can take a holistic video perspective of managing access control, video, and intrusion with a deeply embedded victor unifying client. This flexibility, coupled with the system's powerful distributed architecture, makes C•CURE 9000 the leader in providing solutions to some of the most complex security challenges in mid to large enterprise applications.

Mastering Scalability for Enterprise Implementations

C•CURE 9000 provides an advanced distributed architecture for a robust enterprise solution that supports master and up to 40 satellite application servers. Corporate security personnel and IT managers receive central control over the entire system, while each local facility maintains control of its individual operation. Whether your organization consists of a few facilities that are locally dispersed or many that span the globe, this solution scales as your company grows.

Industry's Most Robust Integrations

C•CURE 9000 brings you myriad integrated solutions including video, intrusion, intercom, fire alarm management, PSIMs and more. The integrations are thoroughly tested and delivered to you through the intuitive C•CURE 9000 interface.

Note: All new features are part of C•CURE 9000 v2.50

www.swhouse.com

Deeper Dive: C•CURE 9000 Enterprise

Enterprise Architecture

The C•CURE 9000 Enterprise architecture supports one master application server (MAS) and up to 40 satellite application servers (SAS) for enterprise scalability.

Each SAS may be positioned close to its relevant field hardware – limiting traffic to the MAS and optimizing performance. Each facility maintains a local SQL database which is synchronized with the MAS for global control and reporting. The MAS distributes these changes globally from each independent SAS, which ensures all servers are equipped and operating with up-to-date information.

By connecting a SAS to the LAN with local access control hardware, alarm monitoring and badging workstations, local performance is optimized versus the latency you may experience from the WAN. Local performance is further optimized since the MAS performs all global reporting across all SASs, thus allowing each SAS to allocate its resources solely to important access control functions.

Independent Control

Each SAS communicates directly with the MAS but is not dependent on the MAS for access control. Each satellite system administrator has total control over all access control field hardware and system information related to his/her respective location. This gives regional system administrators autonomous control over their individual regions independent of the MAS and corporate WAN.

Central Alarm Monitoring and Management

C•CURE 9000 Enterprise allows you to simultaneously monitor alarms from multiple locations at one convenient workstation. Viewing all data across all SASs gives you a full view of your entire operation. Monitoring of alarms from multiple sites means operators may rotate the responsibility whether from different buildings at a campus to different locations across the globe.

Global Reporting

With C•CURE 9000 Enterprise's global reporting functionality, you can retrieve personnel, configuration, hardware, journal, audit and more data from all facilities within the organization. This saves valuable time searching for data and compiling critical reports since all global information is replicated on the MAS.

C•CURE 9000 Standalone and Enterprise System Capacities

C•CURE 9000 MAS Values (Default/Maximum) ¹						
	MAS1	MAS2	MAS3	MAS4	MAS5	MAS6
Enabled Global Personnel Records ²	1k	10k	25k	100k	250k	500k
Simultaneous Clients ³	5/100	5/100	5/100	10/100	10/100	10/100
Badging Clients	1/100	1/100	1/100	2/100	2/100	2/100

C•CURE 9000 Standalone and SAS Values (Default/Maximum) ⁴										
	L ⁵	M ⁵	N ⁵	P ⁵	Q ⁵	R ⁵	PLUS ⁵	S ⁵	Plus ⁵	T ⁵
Online Readers	16	32	64	128	256	512	1,000	2,500	3,500	5,000
Wireless/IP Locks (Non iSTAR)	0/10	0/30	0/60	0/1k	0/2k	0/5k	0/5k	0/5k	0/5k	0/5k
Offline Locks (Non iSTAR)	0/10	0/30	0/60	0/1k	0/2k	0/5k	0/5k	0/5k	0/5k	0/5k
C•CURE Go Readers (Mobile)	0/30	0/30	0/30	0/100	0/100	0/100	0/100	0/100	0/100	0/100
Online Inputs	1k	1k	1k	5k/10k	5k/10k	5k/10k	5k/10k	10k	15k	20k
Online Outputs	1k	1k	1k	5k/10k	5k/10k	5k/10k	5k/10k	10k	15k	20k
Enabled Personnel Records	7k	12k	40k	45k	250k	250k	250k	500k	500k	500k
Concurrent Clients ³	10/30	10/30	10/30	20/256	30/256	40/256	80/256	100/256	100/256	100/256
Concurrent Badging Clients	1/30	1/30	1/30	2/256	2/256	3/256	5/256	10/256	10/256	10/256

(1) Additional clients and badging clients may be added to a system license. Simultaneous client connections are tabulated by C•CURE 9000 Administration, Alarm Monitoring, and Web Client connections. C•CURE 9000 is designed for unlimited expansion. The 100 is a design capability while the tested limit is 10. System performance will vary depending upon specific hardware configuration including number of communication lines/ports, download/upload frequency, etc.

(2) Global personnel records are the maximum supported as an aggregate across the total number of SAS servers.

(3) Client License – Single monitoring station application, administration application or web client application.

(4) Additional simultaneous clients, badging clients, inputs/outputs may be purchased separately. Simultaneous client connections are tabulated by C•CURE 9000 Administration, Alarm Monitoring, and Web Client connections. C•CURE 9000 is designed for unlimited expansion. The 256 is a design capability while the tested limit is 100. System performance will vary depending upon specific hardware configuration including number of communication lines/ports, download/upload frequency, etc.

(5) The baseline capabilities of the system are within the envelope of operation for utilization of SQL Express.

(6) (SQL and SQL Express): A SQL Express license is shipped with every system software DVD package. Series P through S require a full SQL Server 2008 R2 Standard and Enterprise (32- and 64-bit) license which may be purchased separately.



Specifications

C•CURE 9000 Client Workstation	
Recommended Hardware and Software	
Processor	Intel Core i5-3470 (6 MB, 3.2 GHz or greater)
Hard Disk Drive	500 GB or greater
Drive Speed	7,200 RPM or greater
Memory	8GB Minimum
Network Adapter Card	Integrated Gigabit Network Port
DVD Drive	Recommended
Video Card	1 GB NVIDIA Quadro 600
Operating System Support	Windows 10 Professional & Enterprise (32/64-bit) Windows 8.1 Professional & Enterprise (32/64-bit) Windows 7 Professional & Enterprise (32/64-bit, SP1 or later) Windows Server 2012 R2 Standard (64-bit, SP1 or later) Windows Server 2008 R2 Standard (64-bit, SP1 or later)

C•CURE 9000 Standalone Server Series L, M, N	
Recommended Hardware and Software	
Processor	Intel® 3rd Generation Core i7-3770 or greater (8 MB, 3.4 GHz or greater)
Hard Disk Drives	Dual drives: primary drive = 250 GB (9000 Runtime); secondary drive = 250 GB (data backups)
Drive Speed	7,200 RPM or greater
Memory	16GB Minimum
Network Adapter Card	Integrated Gigabit Network Port
DVD Drive	Recommended
Video Card	Integrated Video Subsystem (dedicated video accelerator recommended when used as a client workstation)
Database Support (English Only)	SQL Server 2014 Express/Standard/Enterprise (64-bit) SQL Server 2012 Express/Standard/Enterprise (64-bit, SP1 or later) SQL Server 2008 R2 Standard & Enterprise (64-bit)
Operating System Support	Windows 8.1 Professional & Enterprise (64-bit) Windows 7 Professional & Enterprise (64-bit, SP1 or later) Windows Server 2012 R2 Standard & Datacenter (64-bit) Windows Server 2008 R2 Standard & Enterprise (64-bit, SP1 or later)
Web Server	IIS v6.0 or higher for C•CURE 9000 Web Client, C•CURE Go, victor Web Service, and C•CURE Mobile

SOFTWARE HOUSE

From Tyco Security Products

C•CURE 9000 Standalone Server Series P, Q, R, R+, S and SAS Server Series L, M, N	
Recommended Hardware and Software	
Processor	Intel Xeon Quad-Core E3-1240 (3.3 GHz or greater)
Hard Disk Drives	Dual drives: primary drive = 300 GB (9000 Runtime) secondary drive = 300 GB (data backups)
Drive Speed	15,000 RPM or greater
Memory	32GB Minimum
Network Adapter Card	Intel Gigabit ET Quad Port Adapter, Gigabit Ethernet NIC, PCIe x4
DVD Drive	Recommended
Video Card	Integrated video subsystem (dedicated video accelerator recommended when used as a client workstation)
Database Support (English Only)	SQL Server 2014 Express*/Standard/Enterprise (64-bit) SQL Server 2012 Express/Standard/Enterprise (64-bit, SP1 or later) SQL Server 2008 R2 Standard & Enterprise (64-bit) *SQL Server Express support limited to SAS Server Series L, M, N only
Operating System Support	Windows 8.1* Professional & Enterprise (64-bit) Windows 7* Professional & Enterprise (64-bit, SP1 or later) Windows Server 2012 R2 Standard & Datacenter (64-bit) Windows Server 2008 R2 Standard & Enterprise (64-bit, SP1 or later) *Windows 7/8.1 support limited to SAS Server Series L, M, N only
Web Server	IIS v6.0 or higher for C•CURE 9000 Web Client, C•CURE Go, victor Web Service, and C•CURE Mobile

C•CURE 9000 SAS Server Series P, Q, R, R+, S and MAS Server	
Recommended Hardware and Software	
Processor	Intel Xeon Quad-Core E5-2450 (2.1 GHz or greater)
Hard Disk Drives	Dual drives: primary drive = 600 GB (9000 Runtime) secondary drive = 600 GB (data backups)
Drive Speed	15,000 RPM or greater
Memory	32GB Minimum
Network Adapter Card	Intel Gigabit ET Quad Port Adapter, Gigabit Ethernet NIC, PCIe x4
DVD Drive	Recommended
Video Card	Integrated Video Subsystem ⁶
Database Support (English Only)	SQL Server 2014 Standard & Enterprise (64-bit) SQL Server 2012 Standard & Enterprise (64-bit, SP1 or later) SQL Server 2008 R2 Standard & Enterprise (64-bit)
Operating System Support	Windows Server 2012 R2 Standard & Datacenter (64-bit) Windows Server 2008 R2 Standard & Enterprise (64-bit, SP1 or later)
Web Server	IIS v6.0 or higher for C•CURE 9000 Web Client, victor Web Service, and C•CURE Mobile

Maximum Concurrent SAS per MAS40
 AuthenticationWindows Authentication on Domain and Trusted Domain

Supported Languages⁷
 Arabic, Brazilian Portuguese, Czech, Danish, Dutch, English, French, German, Hungarian, Italian, Japanese, Korean, Polish, Russian, Simplified Chinese, Spanish, Swedish, Traditional Chinese and Turkish

(6) For multiple screen display or other display applications, additional video cards required.
 (7) Languages supported with English OS with language pack, not native OS.

Note: C•CURE 9000 has limited performance and support on 32-bit OS platforms with a minimum requirement of 4GB memory. For latest supported Service Pack for OS/DB, please consult the C•CURE 9000 version specific release notes.

Related Products



C•CURE 9000 SiteServer



C•CURE 9000 Web Client



C•CURE Go



iSTAR Controllers

Approvals






www.swhouse.com


© 2016 Tyco Security Products. All Rights Reserved. SF-10241-DS-201601-101-LI-EN
 Tyco and the product names listed above are marks and/or registered marks. Unauthorized use is strictly prohibited.
 Product offerings and specifications are subject to change without notice. Actual products may vary from photos. Not all products include all features. Availability varies by region; contact your sales representative.




**APC Smart-UPS 1500VA LCD RM 2U
 120V**

Part Number: SMT1500RM2U

Output

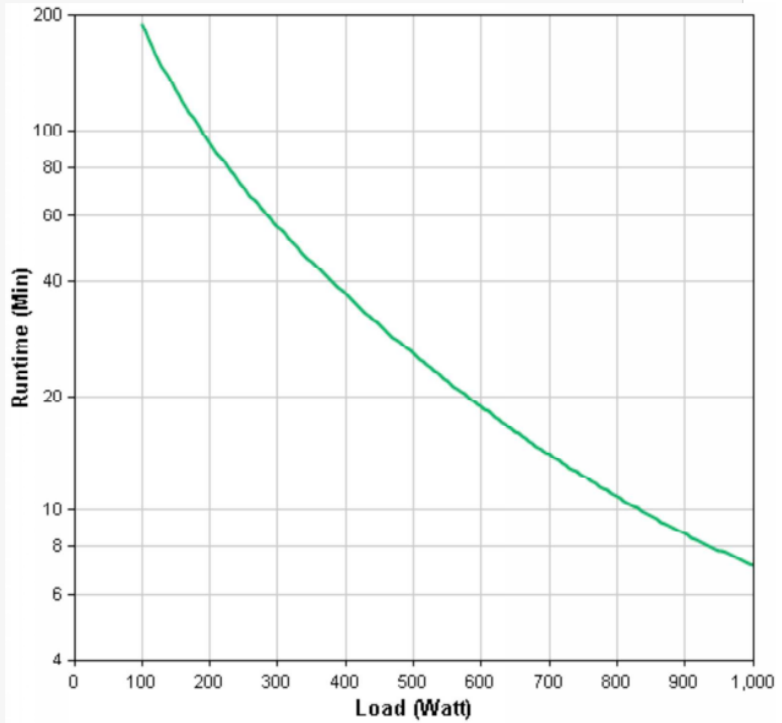
Output Power Capacity	1000 Watts / 1500 VA	
Max Configurable Power	1000 Watts / 1440 VA	
Nominal Output Voltage	120V	
Efficiency at Full Load	97%	
Output Voltage Distortion	Less than 5% at full load	
Output Frequency (sync to mains)	57 - 63 Hz for 60 Hz nominal	
Waveform Type	Sine wave	
Output Connections	(6) NEMA 5-15R	

Input

Nominal Input Voltage	120V	
Input Frequency	50/60 Hz +/- 3 Hz (auto sensing)	
Input Connections	NEMA 5-15P	
Cord Length	2.44 meters	
Input voltage range for main operations	82 - 144V	
Input voltage adjustable range for mains operation	75 - 154V	

Batteries & Runtime

Battery Type	Maintenance-free sealed Lead-Acid battery with suspended electrolyte : leakproof
Typical recharge time	3 hour(s)
RBC™ Quantity	1
Runtime Graph	



Hover over the line on the graph above to view the runtime at any desired load

Curve fit to measured runtime data. All measurements taken with new, fully charged batteries, at typical environmental conditions, with no electrical input and balanced resistive load (PF = 1.0) output.

[View Enlarged Graph](#)

[View Runtime Chart](#)

Communications & Management

Interface Port(s)	SmartSlot,USB
Available SmartSlot™ Interface Quantity	1
Control panel	Multi-function LCD status and control console
Audible Alarm	Alarm when on battery : distinctive low battery alarm : configurable delays
Emergency Power Off (EPO)	Optional

Surge Protection and Filtering

Surge energy rating	459 Joules
Filtering	Full time multi-pole noise filtering : 0.3% IEEE surge let-through : zero clamping response time : meets UL 1449

Physical

Maximum Height	89.00 mm
Maximum Width	432.00 mm
Maximum Depth	457.00 mm
Rack Height	2U
Net Weight	28.64 KG
Shipping Weight	31.91 KG
Shipping Height	251.00 mm
Shipping Width	594.00 mm
Shipping Depth	603.00 mm
Color	Black
Units per Pallet	16.00

Environmental

Operating Environment	0 - 40 °C
Operating Relative Humidity	0 - 95%
Operating Elevation	0-3000 meters
Storage Temperature	-15 - 45 °C

Nashville VAMC
VA: 626-15-103 - Renovate 4 North
Nashville, TN
CMTA Project - VNN15

Bid Set
March 11, 2016

Storage Relative Humidity	0 - 95%
Storage Elevation	0-15000 meters
Audible noise at 1 meter from surface of unit	46.00 dBA
Online Thermal Dissipation	90.00 BTU/hr

Conformance

Regulatory Approvals	CSA,FCC Part 15 Class A,UL 1778
Standard Warranty	3 years repair or replace (excluding battery) and 2 year for battery
Environmental Compliance	RoHS 7b Exemption,REACH: Contains No SVHCs

**The time to recharge to 90% of full battery capacity following a discharge to shutdown using a load rated for 1/2 the full load rating of the UPS.



Illustra 600 IP Series Cameras High-Definition Mini-Domes



Indoor Model



Outdoor Model

Features That Make a Difference:

- Superior video quality, even in low-light
- Face and blur detection
- 720p (1MP) & 1080p (2MP) resolutions
- Quick and easy installation and configuration
- One-touch autofocus, mechanical-zoom models available
- Reduced storage cost with H.264 and integrated bandwidth management analytics
- Up to five individual and programmable Regions of Interest
- UL Plenum-rated recessed mount included on all indoor models
- 9-40mm lens option eliminates trenching for long range shots
- 610LT indoor model lowers cost, yet delivers 1080p with an auto focus lens

The Illustra 600 Series High-Definition (HD) Mini-Domes deliver the four essential qualities of an IP camera: exceptional video quality, easy installation, open platform and reduced cost.

The Illustra 600 Series HD Mini-Domes provide crisp and clear high-definition video, at full frame rates (30fps NTSC/25fps PAL). Whether in bright sun, near darkness or blackout conditions, you can clearly see important details, such as license plates, merchandise labels and faces.

The 610LT offers 1080p resolution. It is a streamlined indoor HD camera with several upgrades over the competition. An auto focus and motorized zoom lens, and built-in recessed Plenum-rated mount sets the 610LT apart in the market. This camera is an excellent choice for businesses that need a quality high-definition camera without audio, alarm contacts or other items typically found in full-featured cameras.

Installation is simple and easy. The cameras include three integrated mounting options: hard surface, electrical box and recessed mounts, ensuring fast installation with no additional cost or hardware. Configuration is also simplified with browser-based, one-touch autofocus, mechanical-zoom, and remote management using the Illustra Connect tool.

The Illustra 600s work with the American Dynamics VideoEdge NVR, HDVR, as well as with other ONVIF-compliant NVRs and hybrid recorders. Visit www.americandynamics.net for the latest integrations.

Using onboard motion-detection, and advanced, integrated analytics, the Illustra 600s reduce your ongoing cost of operation by minimizing the cost of storage while ensuring image quality. The IP67-rated outdoor mini-dome reduces costs in colder weather environments by using PoE+ network power, which enables the camera heaters to function at temperatures down to -30°C.

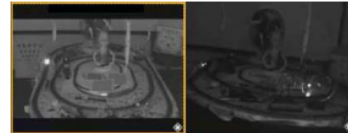
These features make the Illustra 600s the premier choice in high-definition cameras on the market today.

Superior Video Quality: High-Definition

Just like your home television set, the Illustra 600s give you the crisp, clear detail of 720p and 1080p video. These HD standards allow you to take full advantage of newer 16:9 widescreen display monitors that fit our natural vision. For comparison purposes, the Illustra 600 Series surpass other cameras that have resolutions from 720p (1MP), 1.3MP and 1080p (2MP).

Superior Low Light Performance

Too often, significant security events take place at night or in low lighting conditions. With an integrated IR cut filter and powerful CMOS sensors, the Illustra 600s deliver clean, crisp images even in near darkness. This clarity has a further benefit – reduced storage cost. The “noisy” low light images of some megapixel cameras increase bandwidth and storage consumption. *(Not available in the 610LT model)



The Illustra 600 performs in low light at .04 lux vs. the top competitors.

PoE IR Illuminator

At night, when there is no ambient light, even a True Day/Night camera will not provide a clear image. The Illustra 600s give you 24/7 security, with integrated infrared (IR) illuminators to illuminate scenes at night. Effective to a distance of 20 m (60 ft), the



www.americandynamics.net

Features

Illustra IR illuminators operate on PoE, eliminating the need for a separate power supply.



Illustra integrated PoE IR illuminators: shown in operation on the left, and when not in operation on the right.

Onboard Analytics

The Illustra 600 cameras offer integrated analytics to deal with challenging camera views.



With a constant bit rate of 1mbps, the image of the face with the Illustra 600 is clearer than the competitors at 4mbps, saving on storage.

Face Detection

This camera is uniquely suited for monitoring cash registers, teller lines, entrances and other environments where high-quality facial images are important. With built-in facial detection* technology, the 600s find faces in the scene and improve the quality of the image around the face. Facial detection allows you to get clearer images, while reducing the bit rate in the rest of the scene. This further reduces bandwidth and storage costs. (See product documentation for recommended installation and usage).

Blur Detection

The Illustra 600 cameras can detect when an image is out of focus. Should this occur the camera will send an alert to the operator. With the Series option, cameras can be brought back into focus immediately, reducing downtime and maintenance calls.

The 600 Series cameras also include motion detection, audio detection, and network loss detection. When there is an incident, an alert is sent to the operator or an email can be sent to any address or hand-held device.

Theia Wide Angle Lens

The wide angle outdoor models include the Theia SL183 1.8-3mm wide angle lens. Theia's patented, distortion-free lens technology avoids the "barrel distortion" of other lenses and enables ultra clear views while covering up to 117° field of view. By delivering a constant number of pixels to every area of the image, the integrated Theia lens also improves the accuracy of video analytics operating near the edges of the scene.

*Not available in the 610LT model



Illustra 600s wide angle lens (left) vs. typical barrel distorted lens

Theia Telephoto Lens

The telephoto lens includes the Theia SL940A 9-40mm lens that helps avoid the need for trenching. Its long focal length magnifies objects at a distance for unobstructed views. This high quality lens is IR corrected, ensuring that the camera will stay in focus as it transitions to and from color mode.

*Not available in the 610LT

Regions of Interest

The Illustra 600 cameras enhance viewing quality with user-defined regions of interest. The camera can be programmed to manage both higher and lower bit rates in areas customized for each scene. When coupled with a low H.264 constant bit rate, customers can get the best of both worlds. The specific scene has clear imagery within the region of interest, while the camera conserves on bandwidth and storage.

Other camera manufacturers offer the ability to "crop" the image in order to see a region of interest. This method loses all of the video within the cropped area in order to save on bandwidth. However, you lose most of the entire image in those areas. The Illustra 600 cameras allow those areas to be identified and kept in view, while lowering bit rates in ways that minimize the impact on both bandwidth and storage.

Excellent Outdoor Protection

The Illustra 600 Series Outdoor Mini-Domes take a hard stance against challenging environmental conditions. Rated to -40°C with a 24V power supply, or -30°C over PoE+, these cameras thrive in extreme conditions. With no fans to break down, or drying agent bags to replace, the IP67 ratings are tested to operate when submerged at 1 m (3 ft) for 30 minutes. This is a significant autofocus advancement over IP66-rated outdoor cameras. In addition, the Illustra 600's "condensation killer" heater ring operates right where the lens meets the bubble to provide serious environmental protection for any outdoor application.

Easy Configuration: Illustra Connect

We've made configuration even easier with our free Illustra Connect configuration software. Illustra Connect ships with all Illustra cameras and is designed to simplify network discovery and configuration. Illustra Connect saves hours of installation time with remote firmware upgrading to selectable camera groups; setting IP addresses, naming cameras and outputting a summary site audit with the configuration settings of all cameras on the network.

Easy Installation

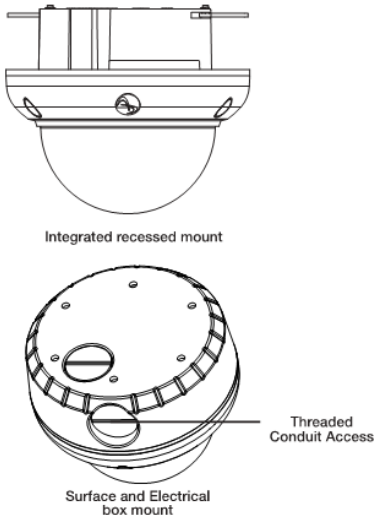
Easy and fast installation is a hallmark of the Illustra 600 Series camera line. The indoor mini-domes are the only indoor camera to provide three integrated mounts without additional hardware or cost. Hard surface, electrical box and recessed mounts are all integrated within the camera. The recessed mount uses integrated "wings" to reduce time spent on a ladder.

To further reduce installation time, the 3-9mm lenses are motorized for remote zoom and one-touch auto focus. Now your installer simply hangs the camera, points it in the right direction and the rest of the job can be done quickly and easily from a web browser.

*Illustra 600 supports facial detection, not facial recognition



Mounts and Accessories
Pendant / Gooseneck Mounts



Mounting Options			
Mount	Image	Model Number	Description
Flush Mount		ADCIM6FLUSHOW ADCIM6FLUSHOB	Flush Mount Kit: Outdoor Dome, White/Black
Pendant Cap		ADCIM6PENDCAPWK ADCIM6PENDCAPBK	Pendant Cap Kit with Adapter: Outdoor, White/Black
Wall Mount		ADCIM6WALLWK ADCIM6WALLBK	Wall Mount Kit: Indoor/Outdoor, White/Black

Accessories			
Adapter	Image	Model Number	Description
Gooseneck Arm		ADLOWARM - White ADCBMARM - Black	For use with Pendant Cap
Outside Corner Mount Adapter		ADCDMCRNRO	For use with Pendant Cap and Gooseneck Arm, or directly to the camera back plate.
Electrical Box Adapter		ADCPWMELEC	Use with additional mounting options such as the UK single- and double-gang boxes. This provides a threaded connection directly to the rear of the Illustra 600/610 back plate and versatile screw options.
Pole Mount Adapter		ADCDMPOLE	For use with Pendant Cap and Gooseneck Arm, or directly to the camera back plate.

Take a closer look

	Illustra 610LT-Indoor	Illustra 600 & 610-Indoor	Illustra 600 & 610-Outdoor
Operational			
Video Compression	H.264, MJPEG	H.264, MJPEG	H.264, MJPEG
Max Frame Rate	H.264: 30ips 1920x1080 MJPEG: 30ips 1920x1080	H.264: 30ips 1280x720 (600 model) 30ips 1920x1080 (610 model) MJPEG: 30ips 1280x720 (600 model) 30ips 1920x1080 (610 model)	H.264: 30ips 1280x720 (600 model) 30ips 1920x1080 (610 model) MJPEG: 30ips 1280x720 (600 model) 30ips 1920x1080 (610 model)
ONVIF-Compliant	Yes	Yes	Yes
Video Output	1.0 Vp-p, 75 ohm, composite, RCA service output	1.0 Vp-p, 75 ohm, composite, RCA service output	1.0 Vp-p, 75 ohm, composite, RCA service output
Resolution	CIF, 4CIF, 720p, 1080p	CIF, 4 CIF, 720p (600 model) CIF, 4CIF, 720p, 1080p (610 model)	CIF, 4 CIF, 720p (600 model) CIF, 4CIF, 720p, 1080p (610 model)
Imager	1/2.7" CMOS progressive scan	1/2.7" inch CMOS progressive scan	1/2.7" inch CMOS progressive scan
Light Sensitivity	400 to 900nm	400 to 900nm	400 to 900nm
Day/Night	Color only	Auto (true day/night)	Auto (true day/night)
IR Illumination	N/A	Yes	Yes
Optional			
Motion Detection	Yes	Yes	Yes
Alarms	Motion, Schedule, Ethernet loss, Tamper Detection	Motion, Schedule, Dry contact, Ethernet loss, Tamper detection	Motion, Schedule, Dry contact, Ethernet loss, Tamper detection
Audio	N/A	Bi-directional duplex, half-duplex	Bi-directional duplex, half-duplex
Alarm I/O	N/A	2/1	2/1
Video Streams	2 simultaneous streams	2 simultaneous streams	2 simultaneous streams
Minimum Illumination	0.1 lux at F1.2 color	0.1 lux at F1.2 color; 0.03 lux b/w and 0.00 lux in IR Illuminator mode	0.1 lux at F1.2 color; 0.03 lux at F1.2 b/w; 0.00 lux at F1.2 in IR Illuminator mode; Wide angle and telephoto 0.2 lux F1.8 color and 0.05 lux b/w
Wide Dynamic Range	70dB, 9 level settings	70dB, 9 level settings	70dB, 9 level settings
IR Corrected Lens	3-9mm motorized auto focus; FOV 97° - 36°	3-9mm motorized auto focus; FOV 97° - 36°	3-9mm motorized auto focus; FOV 36° - 89° Wide Angle manual auto focus 1.8-3mm; FOV 89° - 117° Telephoto manual auto focus 9-40mm; FOV 3.9° - 30°
Lens Type	Verifocal, IR corrected	Verifocal, IR corrected	Verifocal, IR corrected
Network			
Interface	Ethernet 10/100Base-TX	Ethernet 10/100Base-TX	Ethernet 10/100Base-TX
Ethernet Port	RJ-45	RJ-45	RJ-45
Supported Protocols	TCP/IP, DHCP, HTTP, ICMP, UPnP, ARP, DNS, DDNS, PPPoE, SMTP, FTP, RTSP	TCP/IP, DHCP, HTTP, ICMP, UPnP, ARP, DNS, DDNS, PPPoE, SMTP, FTP, RTSP	TCP/IP, DHCP, HTTP, ICMP, UPnP, ARP, DNS, DDNS, PPPoE, SMTP, FTP, RTSP
Configuration Management			
Web Browser	MS IE 8	MS IE 8	MS IE 8
Security	Multi-level, multi-users, IP address filtering, user access log, HTTPS	Multi-level, multi-users, IP address filtering, user access log, HTTPS	Multi-level, multi-users, IP address filtering, user access log, HTTPS
Onboard Storage			
Card Support	No	Micro SDHC 2.0 up to 32GB	Micro SDHC 2.0 up to 32GB
Pre-alarm recording	N/A	Yes	Yes
Recording format	N/A	JPEG, AVI	JPEG, AVI
Playback	N/A	Via browser using FTP	Via browser using FTP
Recording Trigger	N/A	Alarm, network loss, schedule, motion detection	Alarm, network loss, schedule, motion detection
Simultaneous Users	Eight	Eight	Eight
Electrical			
Power Input	12VDC, 24VAC, PoE IEEE 802.3af, Class 0	12VDC, 24VAC, PoE IEEE 802.3af, Class 0	24VAC, PoE+ IEEE 802.3at, Class 4
Power Draw	6.5W	6.5W; 9W with IR Illuminators on	44.5W and 46.5W w/IR Illuminators on via 24VAC; 25W via PoE+

Specifications

	Illustra 610LT-Indoor	Illustra 600 & 610-Indoor	Illustra 600 & 610-Outdoor
Physical			
Dimensions (WxH)	135 x 120 mm (5.11 x 4.72 in.)	135 x 120 mm (5.11 x 4.72 in.)	157 x 147 mm (6.18 x 5.79 in.)
Weight	.907 kg (2 lbs)	.907 kg (2 lbs)	1.04 kg (2.3 lbs)
Housing Color	White only	White or black	White or black
Operating Temperature	-10° C to 50° C (14° F to 122° F) via PoE	-10° C to 50° C (14° F to 122° F) via PoE	4° C to 50° C (40° F to 122° F) via PoE -30° C to 50° C (-22° F to 122° F) via PoE+ -40° C to 50° C (-40° F to 122° F) via AC 24V
Outdoor Rating	N/A	N/A	IP66/IP67
Plenum -Rated	Yes	Yes	With flush mount kit
Regulatory			
Emissions	USA (FCC): CFR 47 Part 15 Canada: ICES-003/NMB-003 Issue 5 EU: EN 55022 Australia/New Zealand: AS/NZS CISPR 22	USA (FCC): CFR 47 Part 15 Canada: ICES-003/NMB-003 Issue 5 EU: EN 55022 Australia/New Zealand: AS/NZS CISPR 22	USA (FCC): CFR 47 Part 15 Canada: ICES-003/NMB-003 Issue 5 EU: EN 55022 Australia/New Zealand: AS/NZS CISPR 22
Immunity	CE: EN50130-4	CE: EN50130-4	CE: EN50130-4
Safety	USA: UL 60950-1 Canada: CAN/CSA-C22.2 No. 60950-1 CB Scheme: IEC 60950-1 EU: EN 60950-1	USA: UL 60950-1 Canada: CAN/CSA-C22.2 No. 60950-1 CB Scheme: IEC 60950-1 EU: EN 60950-1	USA: UL 60950-1 Canada: CAN/CSA-C22.2 No. 60950-1 CB Scheme: IEC 60950-1 EU: EN 60950-1
Model	Description		
Illustra 600 Indoor HD 720p Mini-Domes			
ADCi600-D111	Indoor HD mini-dome, 720p, TDN, WDR, 3-9mm autofocus, vandal resistant, PoE, white, clear bubble		
ADCi600-D011	Indoor HD mini-dome, 720p, TDN, WDR, 3-9mm autofocus, vandal resistant, IR Illuminator, PoE, white, clear bubble		
ADCi600-D131	Indoor HD mini-dome, 720p, TDN, WDR, 3-9mm autofocus, vandal resistant, PoE, Black, clear bubble		
ADCi600-D031	Indoor HD mini-dome, 720p, TDN, WDR, 3-9mm autofocus, vandal resistant, IR Illuminator, PoE, black, clear bubble		
ADCi600-D113	Indoor HD mini-dome, 720p, TDN, WDR, 3-9mm autofocus, vandal resistant, PoE, white, smoked bubble		
ADCi600-D013	Indoor HD mini-dome, 720p, TDN, WDR, 3-9mm autofocus, vandal resistant, IR Illuminator, PoE, white, smoked bubble		
ADCi600-D133	Indoor HD mini-dome, 720p, TDN, WDR, 3-9mm autofocus, vandal resistant, PoE, black, smoked bubble		
ADCi600-D033	Indoor HD mini-dome, 720p, TDN, WDR, 3-9mm autofocus, vandal resistant, IR Illuminator, PoE, black, smoked bubble		
Illustra 600 Outdoor HD 720p Mini-Domes			
ADCi600-D121	Outdoor HD mini-dome, 720p, TDN, WDR, 3-9mm autofocus, vandal resistant, PoE+ heater, white, clear bubble		
ADCi600-D021	Outdoor HD mini-dome, 720p, TDN, WDR, 3-9mm autofocus, IR Illuminator, vandal resistant, PoE+ heater, white, clear bubble		
ADCi600-D141	Outdoor HD mini-dome, 720p, TDN, WDR, 3-9mm autofocus, vandal resistant, PoE+ heater, black, clear bubble		
ADCi600-D041	Outdoor HD mini-dome, 720p, TDN, WDR, 3-9mm autofocus, IR Illuminator, vandal resistant, PoE+ heater, black, clear bubble		
ADCi600-D123	Outdoor HD mini-dome, 720p, TDN, WDR, 3-9mm autofocus, vandal resistant, PoE+ heater, white, smoked bubble		
ADCi600-D023	Outdoor HD mini-dome, 720p, TDN, WDR, 3-9mm autofocus, IR Illuminator, vandal resistant, PoE+ heater, white, smoked bubble		
ADCi600-D143	Outdoor HD mini-dome, 720p, TDN, WDR, 3-9mm autofocus, vandal resistant, PoE+ heater, black, smoked bubble		
ADCi600-D043	Outdoor HD mini-dome, 720p, TDN, WDR, 3-9mm autofocus, IR Illuminator, vandal resistant, PoE+ heater, black, smoked bubble		
ADCi600-D121	Outdoor HD mini-dome, 720p, TDN, WDR, 3-9mm autofocus, vandal resistant, PoE+ heater, white, clear bubble		
Illustra 600 Indoor/Outdoor HD 720p Wide Angle Mini-Domes			
ADCi600-D321	Indoor/Outdoor HD mini-dome, 720p, TDN, WDR, 1.8-3mm wide angle lens, vandal resistant, PoE+ heater, white, clear bubble		
ADCi600-D341	Indoor/Outdoor HD mini-dome, 720p, TDN, WDR, 1.8-3mm wide angle lens, vandal resistant, PoE+ heater, black, clear bubble		
ADCi600-D323	Indoor/Outdoor HD mini-dome, 720p, TDN, WDR, 1.8-3mm wide angle lens, vandal resistant, PoE+ heater, white, smoked bubble		
ADCi600-D343	Outdoor/Indoor HD mini-dome, 720p, TDN, WDR, 1.8-3mm wide angle lens, vandal resistant, PoE+ heater, black, smoked bubble		
Illustra Indoor/Outdoor HD 720p Telephoto Mini-Domes			
ADCi600-D521	Outdoor/Indoor HD mini-dome, 720p, TDN, WDR, 9-40mm telephoto lens, vandal resistant, PoE+ heater, white, clear bubble		
ADCi600-D541	Outdoor/Indoor HD mini-dome, 720p, TDN, WDR, 9-40mm telephoto lens, vandal resistant, PoE+ heater, black, clear bubble		
ADCi600-D523	Outdoor/Indoor HD mini-dome, 720p, TDN, WDR, 9-40mm telephoto lens, vandal resistant, PoE+ heater, white, smoked bubble		
ADCi600-D543	Outdoor/Indoor HD mini-dome, 720p, TDN, WDR, 9-40mm telephoto lens, vandal resistant, PoE+ heater, black, smoked bubble		
Illustra Indoor HD 1080p Mini-Domes			
ADCi610-D111	Indoor HD mini-dome, 1080p, TDN, WDR, 3-9mm autofocus, vandal resistant, PoE, white, clear bubble		
ADCi610-D011	Indoor HD mini-dome, 1080p, TDN, WDR, 3-9mm autofocus, vandal resistant, IR Illuminator, PoE, white, clear bubble		
ADCi610-D131	Indoor HD mini-dome, 1080p, TDN, WDR, 3-9mm autofocus, vandal resistant, PoE, Black, clear bubble		
ADCi610-D031	Indoor HD mini-dome, 1080p, TDN, WDR, 3-9mm autofocus, vandal resistant, IR Illuminator, PoE, black, clear bubble		
ADCi610-D113	Indoor HD mini-dome, 1080p, TDN, WDR, 3-9mm autofocus, vandal resistant, PoE, white, smoked bubble		
ADCi610-D013	Indoor HD mini-dome, 1080p, TDN, WDR, 3-9mm autofocus, vandal resistant, IR Illuminator, PoE, white, smoked bubble		
ADCi610-D133	Indoor HD mini-dome, 1080p, TDN, WDR, 3-9mm autofocus, vandal resistant, PoE, black, smoked bubble		
ADCi610-D033	Indoor HD mini-dome, 1080p, TDN, WDR, 3-9mm autofocus, vandal resistant, IR Illuminator, PoE, black, smoked bubble		



Model	Description
Illustra Indoor LT HD 1080p Mini-Domes	
ADCi610LT-D111	Indoor HD LT mini-dome, 1080p, 3-9mm autofocus, PoE only, white, clear bubble
ADCi610LT-D113	Indoor HD LT mini-dome, 1080p, 3-9mm autofocus, PoE only, white, smoked bubble
Illustra Outdoor HD 1080p Mini-Domes	
ADCi610-D121	Outdoor HD mini-dome, 1080p, TDN, WDR, 3-9mm autofocus, vandal resistant, PoE+ heater, white, clear bubble
ADCi610-D021	Outdoor HD mini-dome, 1080p, TDN, WDR, 3-9mm autofocus, IR illuminator, vandal resistant, PoE+ heater, white, clear bubble
ADCi610-D141	Outdoor HD mini-dome, 1080p, TDN, WDR, 3-9mm autofocus, vandal resistant, PoE+ heater, black, clear bubble
ADCi610-D041	Outdoor HD mini-dome, 1080p, TDN, WDR, 3-9mm autofocus, IR illuminator, vandal resistant, PoE+ heater, black, clear bubble
ADCi610-D123	Outdoor HD mini-dome, 1080p, TDN, WDR, 3-9mm autofocus, vandal resistant, PoE+ heater, white, smoked bubble
ADCi610-D023	Outdoor HD mini-dome, 1080p, TDN, WDR, 3-9mm autofocus, IR illuminator, vandal resistant, PoE+ heater, white, smoked bubble
ADCi610-D143	Outdoor HD mini-dome, 1080p, TDN, WDR, 3-9mm autofocus, vandal resistant, PoE+ heater, black, smoked bubble
ADCi610-D043	Outdoor HD mini-dome, 1080p, TDN, WDR, 3-9mm autofocus, IR illuminator, vandal resistant, PoE+ heater, black, smoked bubble
Illustra Indoor/Outdoor HD 1080p Wide Angle Mini-Domes	
ADCi610-D321	Outdoor/Indoor HD mini-dome, 1080p, TDN, WDR, 1.8-3mm wide angle lens, vandal resistant, PoE+ heater, white, clear bubble
ADCi610-D341	Outdoor/Indoor HD mini-dome, 1080p, TDN, WDR, 1.8-3mm wide angle lens, vandal resistant, PoE+ heater, black, clear bubble
ADCi610-D323	Outdoor/Indoor HD mini-dome, 1080p, TDN, WDR, 1.8-3mm wide angle lens, vandal resistant, PoE+ heater, white, smoked bubble
ADCi610-D343	Outdoor/Indoor HD mini-dome, 1080p, TDN, WDR, 1.8-3mm wide angle lens, vandal resistant, PoE+ heater, black, smoked bubble
Illustra Indoor/Outdoor HD 1080p Telephoto Mini-Domes	
ADCi610-D521	Outdoor/Indoor HD mini-dome, 1080p, TDN, WDR, 9-40mm telephoto lens, vandal resistant, PoE+ heater, white, clear bubble
ADCi610-D541	Outdoor/Indoor HD mini-dome, 1080p, TDN, WDR, 9-40mm telephoto mm lens, vandal resistant, PoE+ heater, black, clear bubble
ADCi610-D523	Outdoor/Indoor HD mini-dome, 1080p, TDN, WDR, 9-40mm telephoto lens, vandal resistant, PoE+ heater, white, smoked bubble
ADCi610-D543	Outdoor/Indoor HD mini-dome, 1080p, TDN, WDR, 9-40mm telephoto lens, vandal resistant, PoE+ heater, black, smoked bubble

Illustra 600 Series Mini-Dome Camera Mounts & Accessories

Model	Description
Illustra 600 Series Mounts	
ADCiM6FLUSHOW	Flush Mount kit, outdoor dome, white
ADCiM6FLUSHOB	Flush Mount kit, outdoor dome, black
ADCiM6PENDCAPWK	Pendant Cap kit, outdoor, white, with adapter
ADCiM6PENDCAPBK	Pendant Cap kit, outdoor, black, with adapter
ADCiM6WALLWK	Wall Mount kit, indoor/outdoor, white
ADCiM6WALLBK	Wall Mount kit, indoor/outdoor, black
ADLOARM	Gooseneck arm - white
ADCBARM	Gooseneck arm - black
ADCDMCRNRO	Outside corner mount adapter
ADCPWMELEC	Electrical box adapter
ADCDMPOLE	Pole mount adapter

Related Products



VideoEdge NVR



HDVR



victor

Approvals



www.americandynamics.net

© 2013 Tyco Security Products. All Rights Reserved. ADC252-DS-201303-R044-TEN
 The trademarks, logos, and service marks displayed on this document are registered in the United States [or other countries]. Any misuse of the trademarks is strictly prohibited and Tyco will aggressively enforce its intellectual property rights to the fullest extent of the law, including pursuit of criminal prosecution wherever necessary. All trademarks not owned by Tyco are the property of their respective owners, and are used with permission or allowed under applicable laws.

Product offerings and specifications are subject to change without notice. Actual products may vary from photos. Not all products include all features. Availability varies by region; contact your sales representative.



Illustra 825 Fisheye Camera



Non Vandal-Resistant



Vandal-Resistant

Features That Make A Difference:

- 5MP imager for super high quality images
- 360°/180° panoramic views of wide areas
- Single or multiple fixed views for forensic investigations
- Onboard dewarping for distortion-free images
- ePTZ capabilities for ultra smooth transition between pan, tilt and zoom
- Efficient bandwidth and video storage to reduce costs
- Onboard SD card recording and storage
- Sleek, discreet design
- Quick and easy installation
- Vandal-resistant model available
- ONVIF 2.4 profile S compliant

The Illustra 825 Fisheye Camera with a 5MP sensor provides a 180° panoramic view when mounted on the wall, or a 360° bird's eye view when mounted on a ceiling. The lens captures an ultra-wide field of view looking in all directions in real-time. The camera's onboard dewarping technology provides distortion corrected video streaming of 180°, 360° panoramic 16:9 or active 4:3 views.

The Illustra 825 Fisheye is ideal for applications such as retail stores, expansive indoor parking areas, casinos, building lobbies, elevator banks, corridor intersections and university lecture halls where situational surveillance covering a wide area can be achieved using a single camera. The Illustra 825 Fisheye Camera is always looking in all directions to capture all activity. The camera produces single or multiple fixed views should forensic investigations be required.

The ePTZ movements of the Illustra 825 Fisheye Camera are ultra smooth creating even transition between pan, tilt and zoom movements. Multiple streams of H.264 and MJPEG video compression provide excellent image clarity while efficiently managing bandwidth to reduce storage costs. In addition, the camera's built-in micro SDHC card slot enables several days of recording to be stored locally on a memory card.

The Illustra 825 Fisheye Camera's sleek, discreet design allows it to blend into any environment for inconspicuous surveillance. The vandal-resistant model protects the camera against external impacts that might occur if an intruder was attempting to take the camera out of operation. It's extremely easy to install and simple to set up. A built-in web server provides easy configuration. In addition, when used with the Illustra Connect software tool, discovery, snapshot, configuration, IP address assignments, diagnostics and firmware upgrades take no time at all.



Specifications

Camera
 Video Compression H.264/MJPEG
 Max Frame Rate 14fps (all resolutions)
 ONVIF Compliant ONVIF 2.4 profile S
Resolutions
 Fisheye 1936x1936
 Active Image 1-4, 960x540
 800x450
 640x360
 480x270
 320x180
 Wall/Ceiling Panorama 1920x1080
 1600x900
 1280x720
 1024x576
 960x540
 800x450
 640x360
 480x270
 320x180
Imager Type 1/2.5" 5MP CMOS sensor
 Minimum Illumination 1.2 lux
 Shutter AES (Automatic Electronic Shutter)
 Lens Focal Length 1.37mm
 Aperture 2.0
 Field of View 183°
 ePTZ Digital pan/tilt/zoom, presets, sequences,
 patterns, scans
 White Balance Auto Normal, Auto Wide, and Manual
 Alarms Motion detection
 Wide Dynamic Range 82dB
 Privacy Zones Yes, 4
 Menu Languages English (default), Arabic, Czech, Danish, German,
 Spanish, French, Hungarian, Italian, Korean,
 Japanese, Dutch, Polish, Portuguese, Swedish,
 Turkish, Chinese Traditional, Chinese Simplified

Network
 Ethernet 10/100Base-T
 Supported Protocols TCP/IP, IPv4, IPv6, TCP, UDP, HTTP, FTP,
 DHCP, WS-Discovery, DNS, DDNS, RTP, TLS,
 Unicast, Multicast, NTP, SMTP, WS-Security

Configuration Management

Onboard Storage
 Card Type Micro SDHC up to 32GB

Electrical
 Power PoE 802.3af Class 3
 Power Consumption <12.95W

Physical
 Body Diameter 149 mm (5.85 in)
 Height
 Vandal-Resistant 74 mm (2.91 in)
 Non Vandal-Resistant 60 mm (2.36 in)
 Weight
 Vandal-Resistant 0.750 kg
 Non Vandal-Resistant 0.730 kg
 Color White (RAL 9003)

Environmental
 Operating Temperature -10°C to 45°C (14°F to 113°F)
 Humidity 95% non-condensing

Regulatory
 Emissions FCC CFR 47 Part 15 Class A, AS/NZS CISPR22
 Class A, ICES-003/NMB-003 Class A, EN 55022
 Immunity EN50130-4, EN 61000-6-1,
 IEC 62599-2, EN55024
 Safety UL 60950-1, CSA-C22.2 No. 60950,
 EN 60950-1, IEC 60950-1
 Environmental RoHS, EU Directive 2011/65/EU
 WEEE, EU Directive 2002/96/EC
 Impact Rating IK10

Ordering Information

Model Numbers	Description
Cameras*	
ADC825-F311	Illustra 825 Fisheye, 5MP, vandal-resistant
ADC825-F312	Illustra 825 Fisheye, 5MP, non vandal-resistant
Mounts	
ADCIM6WALLWK	Illustra 600 Indoor/Outdoor Wall Mount
ADC6DPCAPOW	Illustra 600 Outdoor Pendant Cap

* Includes double gang box/mount adapter plate



Illustra 825 Fisheye video stream views in victor/VideoEdge 4.4

Related Products



victor client



VideoEdge NVRs and Hybrid



exacqVision
NVR

Approvals



www.americandynamics.net

© 2014 Tyco Security Products. All Rights Reserved. ADC328-DS-201402-R02-1-EN
 Tyco and the product names listed above are marks and/or registered marks. Unauthorized use is strictly prohibited.
 Product offerings and specifications are subject to change without notice. Actual products may vary from photos. Not all products include all features. Availability varies by region; contact your sales representative.



VideoEdge NVR

Robust, Scalable, Intelligent



Features That Make a Difference:

- New v4.7 feature! N+2 failover redundancy for worry-free system operation
- Intuitive family of clients enables video monitoring of VideoEdge – and now Intellex video streams – from almost everywhere
- Unparalleled video stream management and multicast support reduce bandwidth
- Powerful analytics save time; transform data into business intelligence
- IP camera auto discovery gets your system up and running quickly
- POS text integration helps identify fraud and cashier proficiency
- HTTPS and SSL security hardening protect against cyber-attacks and other threats
- Supports ONVIF Profile S

Robust, Scalable, NVR

VideoEdge offers a scalable solution from a single NVR to a large, multi-site architecture. Featuring an advanced open architecture and simple design, you can easily deploy any number of cameras, adding and reassigning licenses at any time.

With a customized version of SUSE Linux installed as JeOS (Just enough Operating System), VideoEdge delivers high performance. When coupled with victor, VideoEdge is transformed into a powerful video management system.

Highly Secure and “FISMA Ready”

VideoEdge recorders are HTTPS and SSL security hardened and can be configured to meet NIST SP 800-53 requirements. Our cybersecurity team is vigilant in monitoring for vulnerabilities and responds promptly. Read our white paper.

Industry Best Dynamic Video Stream Management

Receive multiple streams tailored to viewing conditions, resulting in superior video with significantly reduced network bandwidth, CPU resources, and memory usage. VideoEdge dynamically scales multiple live streams to all clients, further reducing bandwidth required for streaming high-quality video.

Sophisticated Analytics that Deliver Business Intelligence

Analytics transform video into business intelligence to better analyze operations, maximize revenue potential, and increase situational awareness. Our robust analytics engine creates powerful meta-data that lets you quickly search for video and visualize results on dashboards or heat maps in just seconds.

Our growing suite of analytics includes:

- Facial Recognition
- Dwell
- Linger
- Enter and Exit
- Direction
- Crowd Formation
- Object Detection
- Object Removed/Abandoned
- No Customer Present (POS Text integration)
- Color Filtering
- Queue Length Monitoring

Read our Video Intelligence and Analytics data sheet.

Diverse Form Factors

Regardless of form factor, VideoEdge recorders use the same software engine ensuring that whether you need a small appliance or large server, you'll get the same superior functionality.

Software Only

An intuitive software-only solution that supports all SUSE Linux-certified hardware. OS included.

Micro NVR

Intuitive and compact. Ideal for small applications or large distributed environments with satellite sites. The embedded PoE switch eliminates the need for dedicated power and network infrastructure.

Desktop NVR

Rated at 200 Mbps of video throughput (100 Mbps to disc) with the ability to record 32 1080p HD cameras. This form factor includes video storage up to 3.5 terabytes and supports external storage through a USB 3.0 or iSCSI connection.

2U NVR

At 400 Mbps of video throughput (200 Mbps to disc), supports up to 64 cameras. Offers redundant power supply and RAID controllers in all configurations.

Rackmount NVR

Features 800 Mbps of video throughput (400 Mbps to disc) supporting up to 128 cameras.

Camera Auto Discovery

Quickly find cameras on your network and automate the assignment of IP addresses. What used to take hours now just takes minutes.

Flexible Client Options

VideoEdge provides myriad client options with superior WAN performance.

VideoEdge Go Mobile App

Full-featured video surveillance mobile app compatible with all iOS 8 devices including the iPhone, iPad, and iPod Touch.

Local Client¹

Embedded with each NVR. Ideal for customers using VideoEdge as part of a single site, single recorder solution.

victor Web Client

Intuitive, web-based interface to view, play back and share video from VideoEdge recorders. View and search video from anywhere with Internet access.

victor Unified Client

A powerful option in scalable tiers that manages live/recorded video from VideoEdge NVRs as well as Intellex or ADTVR recorders.

¹ Not available with rack-mount server.

Specifications

Hardware Requirements for Purpose Built IP Network Video Recorders

Recorders	Micro NVR	Desktop NVR	2U NVR	Rackmount NVR
Camera Type	IP	IP	IP	IP
Max # of Cameras	8	32	64	128
Operating System	SUSE Linux JeOS	SUSE Linux JeOS	SUSE Linux JeOS	SUSE Linux JeOS
OS Drive	Single 500 GB	Single 500 GB	Single 500 GB	Redundant 500 GB (RAID 1)
Network Interface	2 x GigE; 4 x PoE 2 x GigE; 8 x PoE	2 x GigE NICs	4 x 1 GigE NICs	4 x 1 GigE NICs
RAID Controller	None	None	Yes ²	Yes ³
Video Storage	1 TB	2, 4 TB	8, 12, 20 TB	6, 18, 36, 48, 66, 90 TB
External Storage	USB 3	USB 3, iSCSI	USB 3, iSCSI	USB 3, iSCSI
Power Supply	4 PoE Port 120W 8 PoE Port 180W	300W	400W	495W
Redundant Power Supply	No	No	Yes	Yes
Max BTU	4 PoE Port 420 8 PoE Port 630	700	1000	1908
Monitor Interface	1 VGA	1 DVI, 1 VGA, 1 HDMI	1 VGA, 1 DVI	1 VGA
Max. Digital Monitors	1	1	1	1
Local Client	Yes	Yes	Yes	No
Video Recording Throughput	40 Mbps	100 Mbps	200 Mbps	400 Mbps
Dimensions (W x H x D)	36 x 4.4 x 19.5 cm (14.18 x 1.74 x 7.68 in)	39.7 x 10.9 x 34.9 cm (15.6 x 4.3 x 13.75 in)	48.3 x 8.6 x 53 cm (19 x 3.38 x 21 in)	48.3 x 8.7 x 75.6 cm (19 x 3.43 x 29.75 in)

²Available with all units, preconfigured on 20 TB unit
³Not available on 6 TB unit

Hardware Requirements for Commercial Off-the-Shelf (COTS) Servers

	Up to 32 Cameras	Up to 64 Cameras
Operating System	Not Required	Not Required
Processor	Core i3 2100, 3.1 GHz	Intel Xeon E5-2620, 2.00GHz
Memory	8 GB, 1333 MHz	8 GB, 1333 MHz
OS Drive	500 GB with 16 M Cache Memory 7200 RPM	500 GB with 16 M Cache Memory 7200 RPM
Network Interface	Minimum: Two 1 GB NICs, Recommended: Three	Minimum: Two 1 GB NICs, Recommended: Three
RAID Controller	As Needed	As Needed
Video Storage	As Needed	As Needed
External Storage	iSCSI, USB ⁴ , eSATA	iSCSI, USB ⁴ , eSATA
Video Recording (write to disc)	Max 50 Mbps	Max 300 Mbps

⁴USB3 port only



Ordering Information

Model Numbers	Description
Micro NVR	
ADVEM01N0NP4	with 4-PoE and 1 TB usable storage
ADVEM01N0NP8	with 8-PoE and 1 TB usable storage
Desktop NVR with 4 IP Camera Licenses	
ADVED02N0N4B	2 TB usable storage
ADVED04N0N4B	4 TB usable storage
2U NVR with 4 IP Camera Licenses	
ADVER08R5N2B	8 TB usable storage
ADVER12R5N2B	12 TB usable storage
ADVER20R5N2B	20 TB storage
2U Rackmount Server with 4 IP Camera Licenses	
ADVER06N0DF	6 TB of usable storage
ADVER18R5DF	18 TB of usable RAID5 storage
ADVER36R5DF	36 TB of usable RAID5 storage
ADVER48R5DF	48 TB of usable RAID5 storage
ADVER66R5DF	66 TB of usable RAID5 storage
ADVER90R5DF	90 TB of usable RAID5 storage
VideoEdge NVR Add-on	
ADVEC01	1 IP camera license
ADVEVAC01	1 video intelligence analytics license
Software Only	
ADVVSWM	VideoEdge and victor application server (VAS) with 4 camera licenses and 2 victor client licenses
ADVESWADD	One additional VideoEdge NVRs Server software with 4 camera licenses (requires ADVVSWM)

Related Products



victor Unified Client



RAID Storage



Illustra IP Cameras



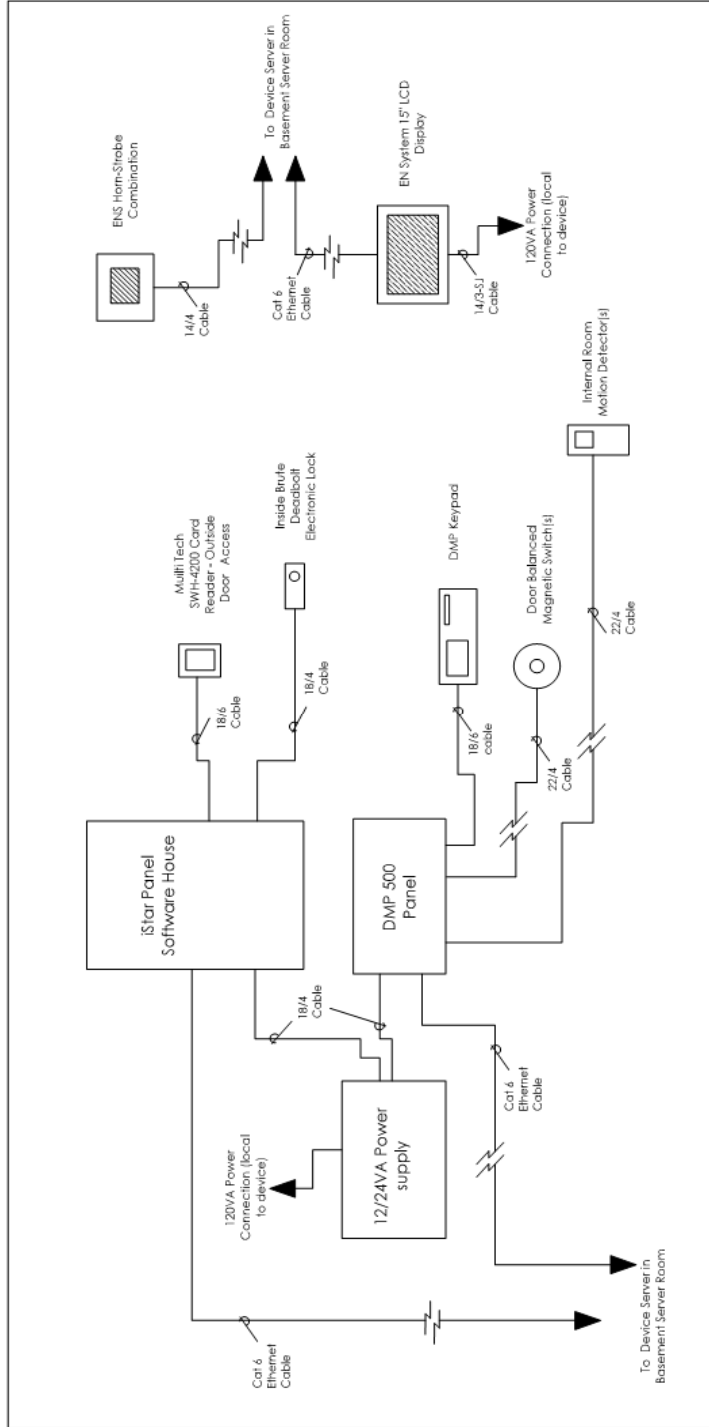
Software House C-CURE 9000

Approvals



www.americandynamics.net

© 2015 Tyco Security Products. All Rights Reserved. AD0380-DS-201512-R01-LT-EN
 Tyco and the product names listed above are marks and/or registered marks. Unauthorized use is strictly prohibited.
 Product offerings and specifications are subject to change without notice. Actual products may vary from photos. Not all products include all features. Availability varies by region, contact your sales representative.



Typical Room
Access Control - Emergency Notification

