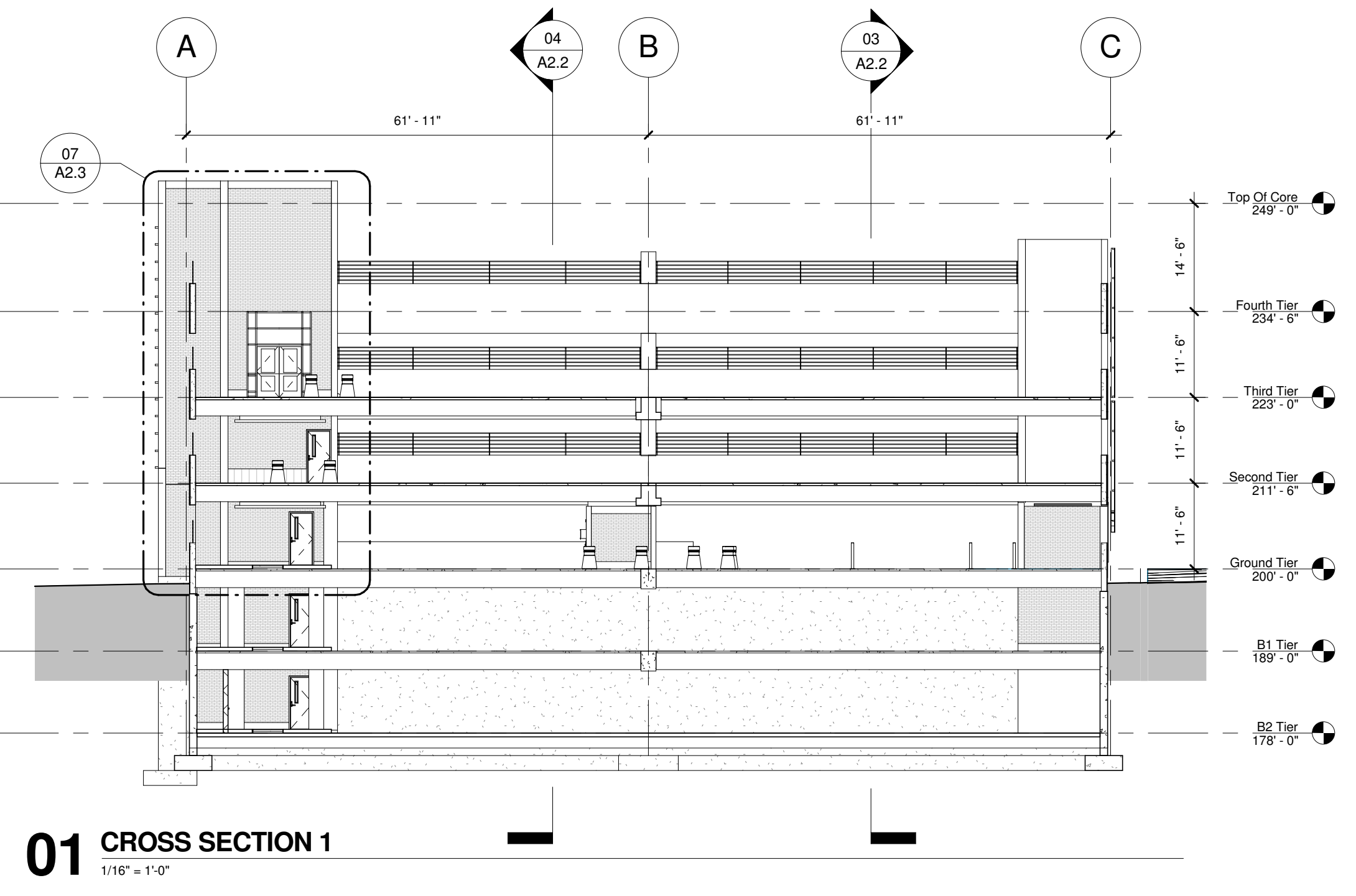
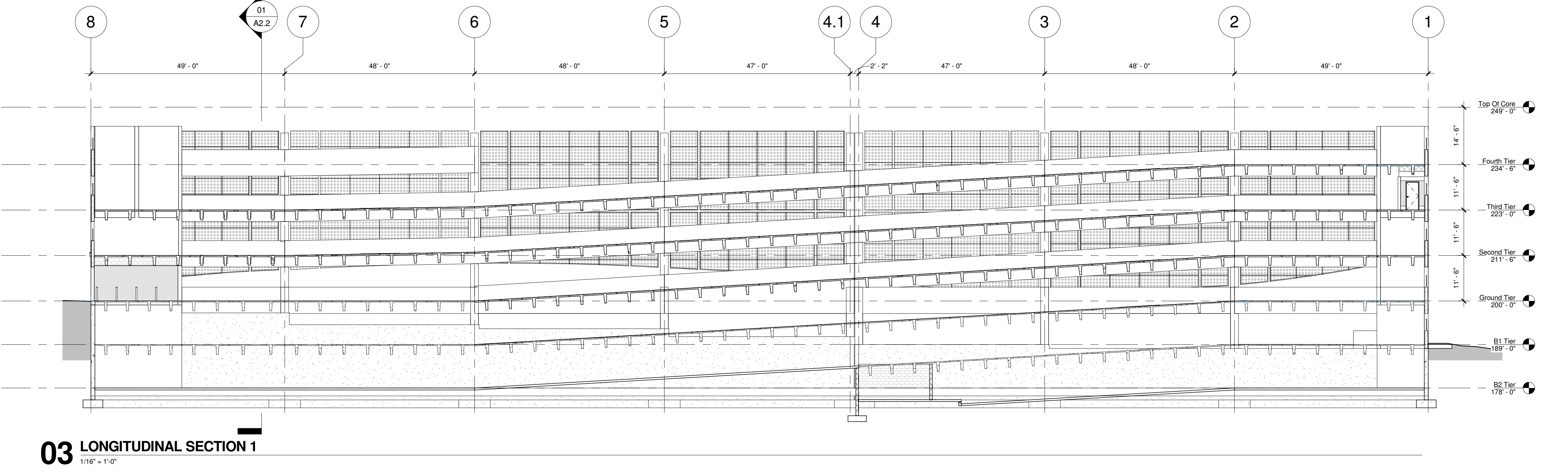


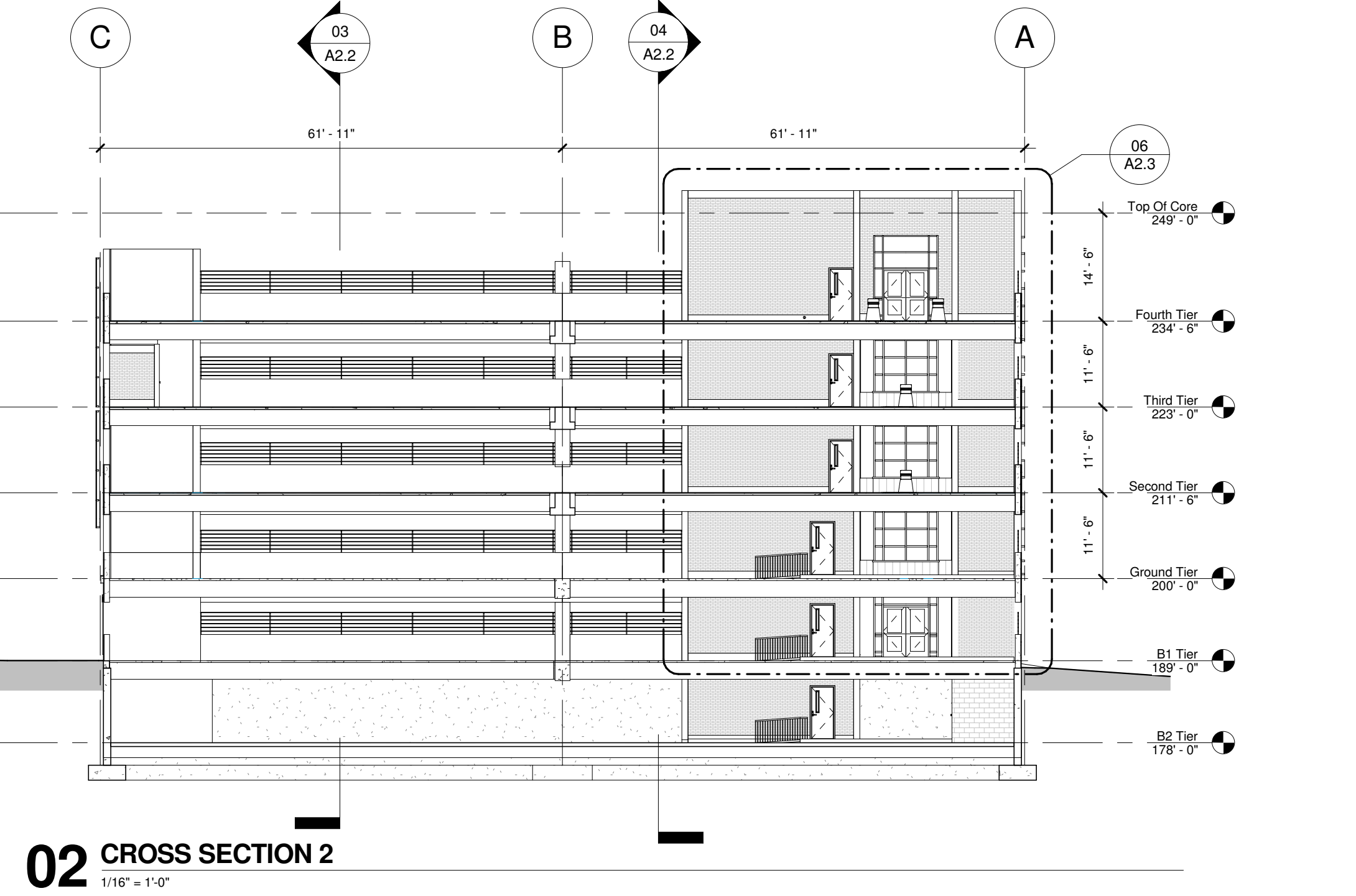
one eighth inch = one foot  
 one quarter inch = one foot  
 one half inch = one foot  
 three eighths inch = one foot  
 three quarters inch = one foot  
 one inch = one foot  
 one and one half inches = one foot  
 three inches = one foot



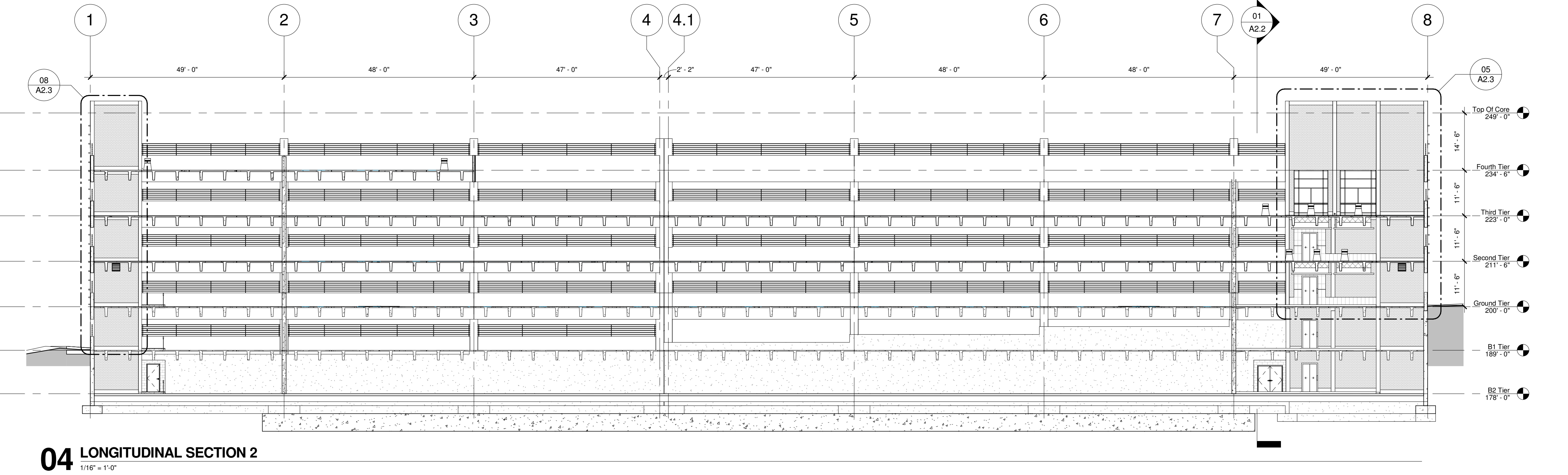
**01 CROSS SECTION 1**  
1/16" = 1'-0"



**03 LONGITUDINAL SECTION 1**  
1/16" = 1'-0"



**02 CROSS SECTION 2**  
1/16" = 1'-0"



**04 LONGITUDINAL SECTION 2**  
1/16" = 1'-0"

Revisions:	Date
4 100% Submission	02/16/15
3 95% Submission	08/28/14
2 65% Submission	08/07/14
1 35% Submission	04/15/14

CONSULTANTS:	
<b>ARCHITECT</b> Melville Thomas Architects, Inc. 600 Wyndhurst Avenue, Suite 315 Baltimore, MD 21210	<b>PARKING CONSULTANT</b> Tim Haas & Associates, Inc. 650 Township Line Road, Suite 100 Blue Bell, PA 19422
<b>STRUCTURAL ENGINEER</b> Tim Haas & Associates, Inc. 550 Township Line Road, Suite 100 Blue Bell, PA 19422	<b>MEP ENGINEER</b> DCS Infrastructure, Inc. 3349 Route 112, Suite 1B Medford, NY 11763
<b>COST ESTIMATOR</b> DMS Construction Consulting Services, Inc. 5550 Sterrett Place, Suite 300 Columbia, MD 21044	<b>CIVIL ENGINEER</b> KCI Technologies, Inc. 400 Wyndhurst Ave., Suite 315 Baltimore, MD 21210 T: 410.433.4400 F: 410.433.4719 www.mtarx.com

SEAL:

ARCHITECT/ENGINEERS:

**Melville Thomas Architects, Inc.**  
 ARCHITECTURE & PLANNING



400 Wyndhurst Ave., Suite 315 Baltimore, MD 21210  
 T: 410.433.4400 F: 410.433.4719  
 www.mtarx.com

Drawing Title	BUILDING SECTIONS
Approved: Project Director	- - -

Project Title	VA MEDICAL CENTER EXPAND VISITOR/PATIENT PARKING GARAGE - PHASE 1	Project Number	688-345
Location	50 IRVING ST. N.W. WASHINGTON, D.C.	Building Number	-
Date	02/16/15	Drawing Number	A2.2
Checked	GT	Drawn	MC
		Dwg. 25 of 89	

Office of  
Construction  
and Facilities  
Management



Department of  
Veterans Affairs

1/16" = 1'-0"