

Melville Thomas Architects, Inc.

ARCHITECTURE & PLANNING

M E M O

VA GARAGE CONSULTANTS

VA EXPANSION GARAGE

28 APRIL 2016

TO

PROJECT

DATE

VA Expansion Parking Garage Bidder Questions From Dawn Carroll-Amin:

1. Please identify the crash rating required for the Bollard & Cable System. (Spec Section 34 71 13).

The crash rating is an M50 (15,000 lb vehicle traveling at 50 MPH).

2. Please identify what is required as regards a temporary construction fence.

The temporary construction fence should be 6'-4" (+/-) above grade at project areas or combined project and laydown areas and 8 feet at dedicated construction/laydown areas where materials and large equipment may be stored. Fencing materials to be 2-3/8" galvanized posts with 11 gauge chain link fencing, 1-5/8" top and bottom rail. Fabric shall be attached with galvanized metal heavy gauge wire clips. Embed fence posts for 6' panels securely into ground whenever possible. Fence posts may be installed on concrete blocks if frequent relocation is anticipated. 8' fencing to be securely embedded into ground where possible to avoid tipping from wind load. No cuts or openings allowed in fence fabric.

3. Sign Type S27 ("VA" dimensional letters), as shown on Sheet A6.2, is not shown on any of the exterior building elevations. However, two sets of letters (S27) are located on drawing 02/A1.6. Can you confirm this sign type is required? If so, can you provide an elevation indicating the mounting height and position of these letters. (Drawing No. A6.2 & A1.6).

Sign Type S27 is required as scheduled and indicated on the plan. See attached elevation drawing SK 1 and SK 2 for location on the building.

4. For the new exterior dimensional letters at the entrances/exits as shown on elevation drawing 01/A2.1 and 04/A2.1, the text reads, "VA MEDICAL CENTER PATIENT/VISITOR PARKING" (for both the East and South elevations). However, on the sign schedule on Sheet A6.2, the text reads, "ENTER" and "EXIT" for sign Type S1 and S2 respectively. Can you confirm which message is correct? (Drawing No. 01/A2.1 & 04/A2.1 & A6.2).

"VA MEDICAL CENTER PATIENT/VISITOR PARKING" is not part of the parking directional sign package but is required in two locations as indicated on the elevation drawings. The materials, font, and dimensions are shown on the elevation drawings and detail. The "ENTER" and "EXIT" are scheduled signs (S1 and S2). The size of the lettering has been revised to 6" high. See the revised sign schedule SK6e attached and drawing SK 3 attached.

5. On the elevation drawing 01/A2.1 and 04/A2.1, it appears to show overhead wall mount panels, mounted centered above the in/out lanes (one for "In" with arrows and one for "Out" with do not enter symbols). However, there are no sign marks on the sign location plans (Sheet 01/A1.3 and 01/A1.4) indicating

these signs are required at these locations. Can you confirm if these overhead panels are required at the entrance/exit locations (Drawing No. 01/A2.1 & 04/A2.1).

The elevation has been revised to say "ENTER" and "EXIT" to coordinate with the sign schedule. See SK 3 and SK 6 attached.

6. Please provide the Thin Brick manufacturer, brick size, color, and finish used on the Phase One portion of the deck.

The VA will have to respond to this question.

7. Please provide the Precast Architectural concrete mix and finish used on the Phase One portion of the deck.

The VA will have to respond to this question.

8. Details 01, 02, 07, and 08 on drawing A3.4 shows a 3/8" joint (typical mortar joint Spacing between bricks) between the existing deck and the future Phase II portion of the deck. This does not leave enough tolerance for manufacturing and erection processes and it is requested that a minimum 1" joint be allowed. Also it would be beneficial to provide a concrete band only (no thin brick) at the base of all the phase two panels to provide a transition at the joint which would not draw as much attention to the specific joint, please let us know if this would be something you would consider.

It is not appropriate to re-visit the design during the bid phase. Bid the detail as shown. If adjustments to the details are required, the VA and the Architect will negotiate this as a change to the contract.

9. Would there be a geotechnical report from the initial parking garage construction? For the excavation work of the Phase 1 project.

The VA will have to respond to this question.

10. Bollard Detail shown on CS3.2

- Shows bollard to be 3'10" above finish grade. Sleeve specification calls for bollard to be max 34" above finish grade. Please verify.

The 3'-10" dimension shown for the Interior Security Post/Bollard is an error. The dimension should be 34".

- Plan view CS3.0 shows bollard foundation will be partially through existing sidewalk, curb and possibly paving. Should we assume all of these to be cored through existing conditions or is this the contractors option to remove these existing conditions, install new bollard foundations 4" below finished condition grades and then replace conditions over foundations to give a much better appearance?

The proposed Security Post/Bollard foundation may be lowered below grade as proposed by the contractor as long as the dimensions of the proposed concrete foundation remain the same; 3'-8" (depth) and 2'-6" (diameter). This will require the overall length of the pipe bollard to be lengthened

per the proposed burial depth because the pipe will still need to be embedded a minimum of 3' into the concrete foundation and extend 34" above the proposed surface.

11. Finish schedule shown on drawing A5.1 does not indicate any ceramic tile finishes to be completed. drawing A4.2 details do indicate wall tile at some Lobbies. Could the finish schedule be updated to show rooms and walls to receive ceramic tile?

See the revised finish schedule SK 4 attached.

12. Please confirm or answer the following comments and questions (see sheet CS3.1):
- Stop Sign: Qty 1.
 - No Right Turn Sign: Qty 1.
 - No Left Turn Sign: Qty 1.

The quantities indicated above are correct.

- These signs are not indicated on the signage schedule (Sheet A6.2). If these signs are to be included in the scope, please provide sizes.

The proposed Stop sign shall be 30" x 30."

13. How many Tiers are included in the scope of work — Only Tiers 2, 3 & 4?
Because Tier B1 (Sheet A1.3); Tier B2 (Sheet A1.3) & Ground Tier (Sheet A1.4) all say "existing"; however sign types from Sheet A6.2 are indicated. Is that signage existing or are the signage marks indicating new signage for those existing areas?

There are signs included in this bid package that are installed on the existing garage.

14. A2.1 "01 East Elevation" & "05 South Elevation" indicate architectural signage letters: "VA Medical Center Patient/Visitor Garage". Are these new letters or are they existing? They are not indicated on the location plans (Sheets A1.3, A1.4, A1.5 & A1.6) or on the signage schedule (Sheet A6.2). if they are new and included in the scope, please provide the exact message and size/specification details.

See answer to question no. 4.

15. Sheet A2.4 "06 Ground Tier Elevation" indicates architectural signage letters - however they are not indicated on the location plans (Sheets A1.3, A1.4, A1.5 & A1.6) or on the signage schedule (Sheet A6.2).

See answer to question no. 4.

16. The location plan (Tier 4, Sheet A1.6) indicates 2 Sets of architectural signage letters (Sign Type 527 —Sheet A6.2) to say "VA". Is that the correct message? Please provide more information regarding Sign type 27, including locations/specifications/size and exact copy.

See answer to question no. 3.

17. Blast Proof wall shown on drawing CS3.0 refers you to structural drawings for the details, which has no details. Please provide wall and foundation details.

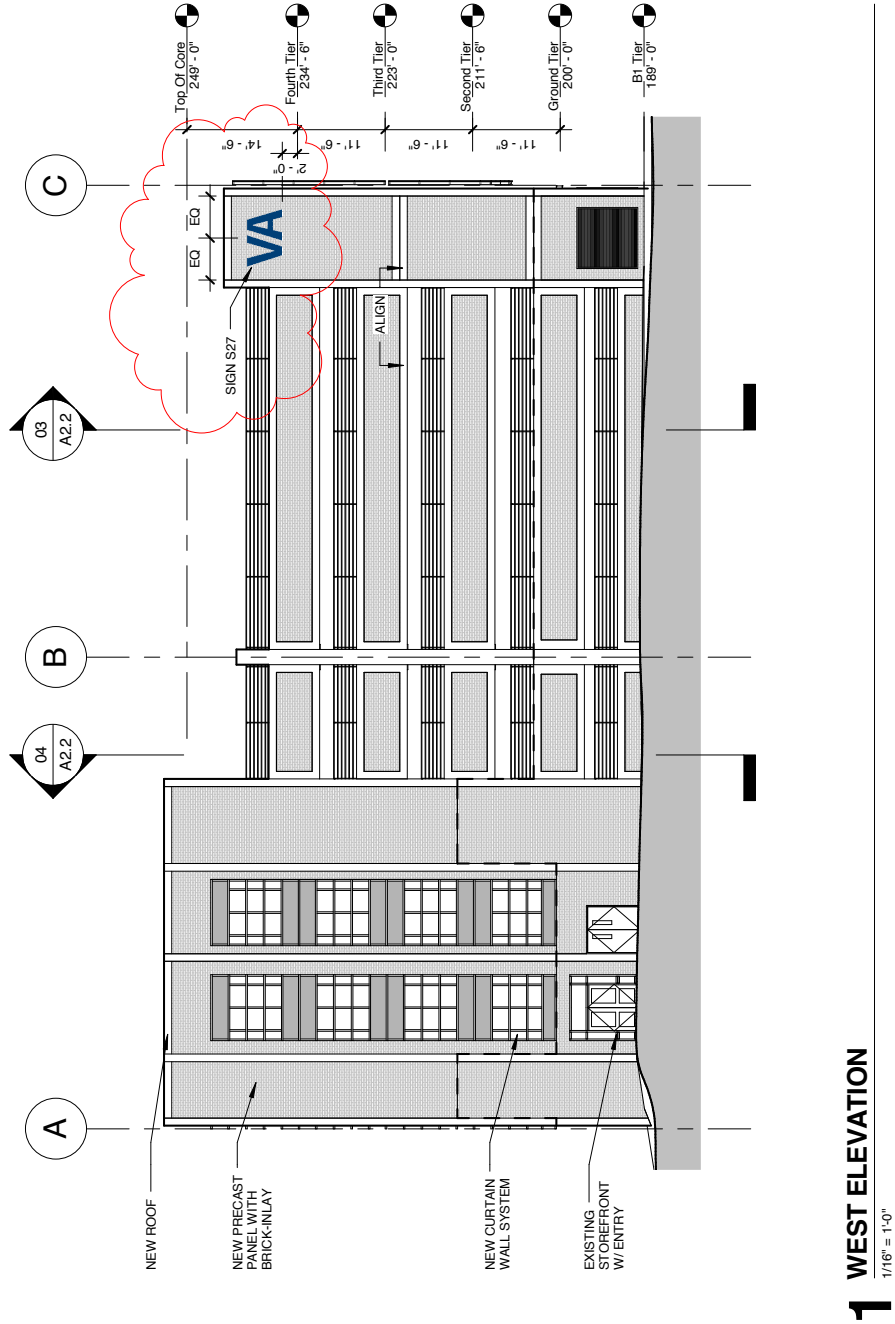
See structural detail attached.

18. Detail 4 shown on drawing LP7.1 shows spacing for the main concrete incased bollards to be min. of 50' and a max of 200'. Is the contractor to decide on spacing from 50' to 200'.

The contractor may determine the length in the field based on a minimum of 50 LF and a maximum of 200 LF without bends.

19. Automatic Door Operators specification does not indicate which will receive them nor does the hardware schedule. Drawings indicate (3) openings Please verify this is correct.

They are indicated in the hardware schedule under Hardware Set 5 and Hardware Set 5A. Doors 606.1, 504.1, and 204.2 receive Automatic Door Openers. Door 109.1 is mislabeled and should be HW-3C. See revised Door and Frame Schedule SK 4 attached.



SK1

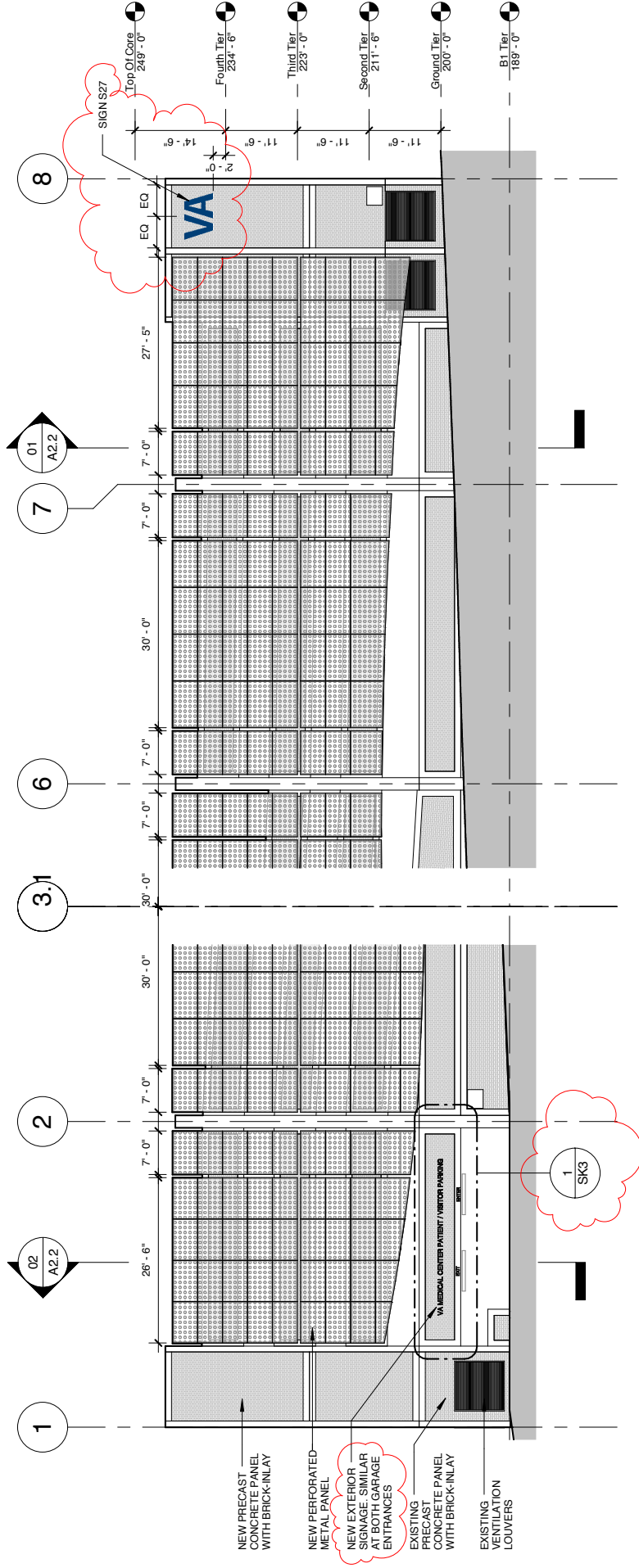
SIGN TYPE S27 LOCATION

VA MEDICAL CENTER
04/28/16 ADDENDUM 1

EXPAND VISITOR/PATIENT PARKING GARAGE - PHASE 1

Melville Thomas Architects, Inc.
ARCHITECTURE & PLANNING

600 Wyndhurst Ave. Suite 315 Baltimore, MD 21210
TEL: (410) 433-4400 FAX: (410) 433-4719
www.mtarx.com



1 SOUTH ELEVATION W/ SCREEN WALL

1/16" = 1'-0"

SK2

SIGN TYPE S27 LOCATION

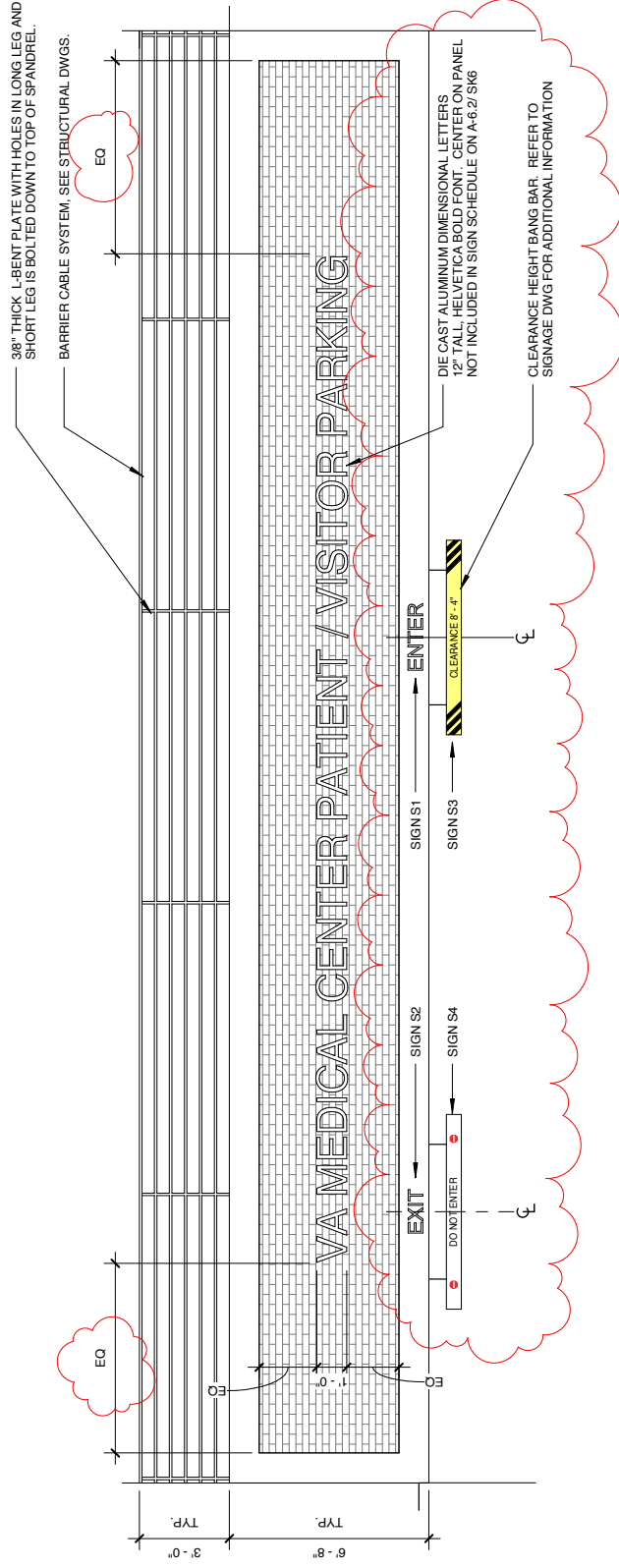
VA MEDICAL CENTER

EXPAND VISITOR/PATIENT PARKING GARAGE - PHASE 1

04/28/16 ADDENDUM 1

Melville Thomas Architects, Inc.
ARCHITECTURE & PLANNING

600 Wyndhurst Ave ■ Suite 315 ■ Baltimore, MD 21210
TEL: (410) 433-4400 FAX: (410) 433-4719
www.mtarx.com



1 GROUND TIER ENTRY ELEVATION

1/4" = 1'-0"

SK3

TYPICAL SIGNAGE AT GARAGE ENTRANCES

VA MEDICAL CENTER
04/28/16 ADDENDUM 1

EXPAND VISITOR/PATIENT PARKING GARAGE - PHASE 1

FINISH SCHEDULE									
ROOM NO.	ROOM NAME	FLOOR FINISH	WALL FINISH				CEILING FINISH	REMARKS	
			NORTH	SOUTH	EAST	WEST			

301	SECURITY BOOTH	C	P / GWB	P / GWB	P / GWB	P / GWB	AT	CEILING SUSPENDED PRECAST CONCRETE CAP	
302	STAIR 1	PC	P / PC	P / PC	P / PC	P / PC	AT	PAINT UNDERSIDE OF STAIRS	
304	LOBBY 1	EXP / C	PC / CT	PC / CT	PC / CT	PC / CT	AT	CEILING SUSPENDED FROM STRUCTURAL FRAMING. SEE INTERIOR ELEVATIONS FOR EXTENT OF CERAMIC TILE.	
306	LOBBY 2	EXP / C	P / PC	P / PC	P / PC	P / PC	AT	CEILING SUSPENDED FROM STRUCTURAL FRAMING. SEE INTERIOR ELEVATIONS FOR EXTENT OF CERAMIC TILE.	
307	STAIR 2	PC	P / PC	P / PC	P / PC	P / PC	AT	PAINT UNDERSIDE OF STAIRS	
402	STAIR 1	PC	P / PC	P / PC	P / PC	P / PC	AT	PAINT UNDERSIDE OF STAIRS	
404	LOBBY 1	EXP / C	PC / CT	PC / CT	PC / CT	PC / CT	AT	CEILING SUSPENDED FROM STRUCTURAL FRAMING. SEE INTERIOR ELEVATIONS FOR EXTENT OF CERAMIC TILE.	
406	LOBBY 2	PC	P / PC	P / PC	P / PC	P / PC	AT	CEILING SUSPENDED FROM STRUCTURAL FRAMING. SEE INTERIOR ELEVATIONS FOR EXTENT OF CERAMIC TILE.	
407	STAIR 2	PC	P / PC	P / PC	P / PC	P / PC	AT	PAINT UNDERSIDE OF STAIRS	
502	STAIR 1	PC	P / PC	P / PC	P / PC	P / PC	AT	OPEN TO ABOVE	
504	LOBBY 1	EXP / C	PC / CT	PC / CT	PC / CT	PC / CT	AT	CEILING SUSPENDED FROM PRECAST CONCRETE ROOF. SEE INTERIOR ELEVATIONS FOR EXTENT OF CERAMIC TILE.	
506	LOBBY 2	EXP / C	P / PC	P / PC	P / PC	P / PC	AT	CEILING SUSPENDED FROM STRUCTURAL FRAMING. SEE INTERIOR ELEVATIONS FOR EXTENT OF CERAMIC TILE.	
507	STAIR 2	PC	P / PC	P / PC	P / PC	P / PC	AT	PAINT UNDERSIDE OF STAIRS	
508	ELECTRIC RM	PC	P / PC	P / PC	P / PC	P / PC	PC	PRECAST CONCRETE CAP	
602	STAIR 1	PC	P / PC	P / PC	P / PC	P / PC	PC	PRECAST CONCRETE ROOF	
604	LOBBY 1	EXP / C	PC / CT	PC / CT	PC / CT	PC / CT	AT	CEILING SUSPENDED FROM PRECAST CONCRETE ROOF. SEE INTERIOR ELEVATIONS FOR EXTENT OF CERAMIC TILE.	
606	LOBBY 2	EXP / C	P / PC	P / PC	P / PC	P / PC	AT	CEILING SUSPENDED FROM PRECAST CONCRETE ROOF. SEE INTERIOR ELEVATIONS FOR EXTENT OF CERAMIC TILE.	
607	STAIR 2	PC	P / PC	P / PC	P / PC	P / PC	AT	PRECAST CONCRETE ROOF	

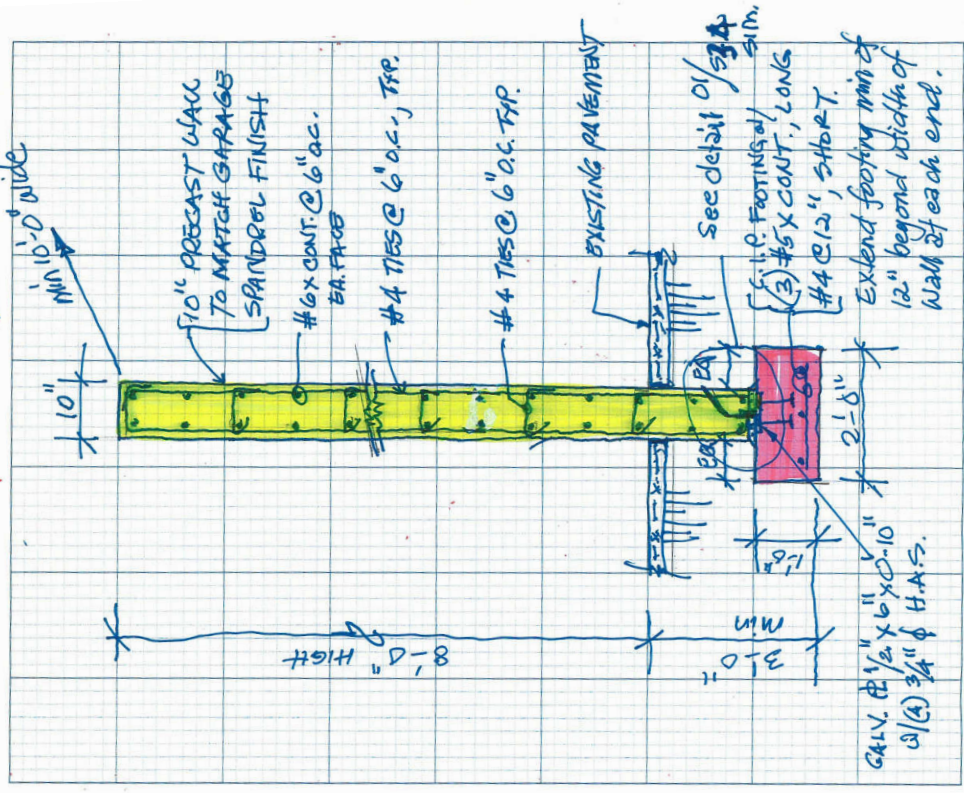
DOOR AND FRAME SCHEDULE													
TIER	LOCATION		DOOR					FRAME			HARDWARE	RATING (MIN.)	REMARKS
	FROM	TO	TYPE	MATERIAL	THICKNESS	WIDTH	HEIGHT	TYPE	MATERIAL	HEAD			
FOURTH	FOURTH PARKING	STAIR 2	607.1	2	4	1 3/4"	3'-0"	A	4	H1	J1	90	FIRE RATED GLASS.
FOURTH	LOBBY 2	FOURTH PARKING	606.1	4	2	1 3/4"	6'-0"	B	2	-	-	HW - 5	RELOCATED FROM GROUND TIER LOBBY 2. PROVIDE NEW DOOR. EXISTING FRAME TO REMAIN.
THIRD	ELECTRIC RM	THIRD PARKING	508.1	1	4	1 3/4"	3'-0"	A	4	H1	J1	HW - 3	CARD READER.
THIRD	THIRD PARKING	STAIR 2	507.1	2	4	1 3/4"	3'-0"	A	4	H1	J1	HW - 1	FIRE RATED GLASS.
THIRD	THIRD PARKING	THIRD PARKING	504.1	4	2	1 3/4"	6'-0"	B	2	-	-	HW - 5	RELOCATED FROM GROUND TIER LOBBY 1. PROVIDE NEW DOOR. EXISTING FRAME TO REMAIN.
THIRD	LOBBY 1	STAIR 1	502.1	2	4	1 3/4"	3'-0"	A	4	H1	J1	HW - 1	FIRE RATED GLASS.
SECOND	SECOND PARKING	STAIR 2	407.1	2	4	1 3/4"	3'-0"	A	4	H1	J1	HW - 1	FIRE RATED GLASS.
SECOND	LOBBY 1	STAIR 1	402.1	2	4	1 3/4"	3'-0"	A	4	H1	J1	HW - 1	FIRE RATED GLASS.
GROUND	SECURITY BOOTH	GROUND PARKING	301.1	3	4	1 3/4"	3'-0"	A	4	H1	J1	HW - 3A	CARD READER AND SECURITY GLASS.
B1	LOBBY 2	EXTERIOR	204.2	-	-	1 3/4"	6'-0"	-	-	-	-	HW - 5A	EXISTING TO REMAIN. REVISE HARDWARE FOR AUTOMATIC OPENER.
B2	UTILITY RM	B2 PARKING	110.1	-	-	1 3/4"	6'-0"	-	-	-	-	HW - 3C	EXISTING TO REMAIN. REVISE HARDWARE FOR CARD READER.
B2	ELECTRIC RM	B2 PARKING	109.1	-	-	1 3/4"	6'-0"	-	-	-	-	HW - 3C	EXISTING TO REMAIN. REVISE HARDWARE FOR CARD READER.
B2	EQUIPMENT RM	B2 PARKING	108.1	-	-	1 3/4"	6'-0"	-	-	-	-	HW - 3C	EXISTING TO REMAIN. REVISE HARDWARE FOR CARD READER.
B2	ELEV MACH	B2 PARKING	106.1	-	-	1 3/4"	3'-0"	-	-	-	-	HW - 3B	EXISTING TO REMAIN. REVISE HARDWARE FOR CARD READER.
B2	ELEV MACH	B2 PARKING	104.1	-	-	1 3/4"	6'-0"	-	-	-	-	HW - 3C	EXISTING TO REMAIN. REVISE HARDWARE FOR CARD READER.

SK4

REVISED FINISH & DOOR SCHEDULE

VA MEDICAL CENTER EXPAND VISITOR/PATIENT PARKING GARAGE - PHASE 1

04/28/16 ADDENDUM 1



550 Township Line Road Suite 100 Blue Bell, PA 19422 Phone 484.342.0200 Fax 484.342.0222 www.timhaas.com
 Tim Haas, P.E. 1/10/2016
 Tim Haas, P.E. 1/10/2016

SIGNAGE SCHEDULE						
MARK	SIZE		LTR. HT.	TEXT	MTG. DETAIL	REMARKS
	W	H				
S1	-	-	6"	ENTER	SURFACE MOUNT	SEE NOTE #1
S2	-	-	6"	EXIT	SURFACE MOUNT	SEE NOTE #1
S3	6' - 6"	6' DIA	0' - 3 1/2"	CLEARANCE 8' - 4"	4/A6.1	SEE 4/A6.1
S4	6' - 6"	6' DIA	0' - 3 1/2"	DO NOT ENTER	1/A6.1	SEE 4/A6.1
S5	12"	1' - 6"	0' - 1 1/2"	ACCESSIBLE PARKING	3.5/6/A6.1	SEE 7/A6.1
S6	12"	1' - 6"	0' - 1 1/2"	VAN ACCESSIBLE PARKING	6/A6.1	SEE 7/A6.1
S7	9"	6"	VARIES	ROOM NAME	3/A6.1	SEE 7/A6.1
S8	1' - 10"	2' - 9"	VARIES	LEVEL SIGN	3/A6.1	SEE 7/A6.1
S9	6' - 0"	1' - 3"	0' - 6"	SPEED LIMIT	2/A6.1	SEE 7/A6.1
S10R	6' - 0"	1' - 3"	0' - 4"	ACCESSIBLE VAN PARKING →	1/A6.1	SEE 7/A6.1
S10L	6' - 0"	1' - 3"	0' - 4"	← ACCESSIBLE VAN PARKING	2/A6.1	SEE 7/A6.1
S12	6' - 0"	1' - 3"	0' - 6"	OUT →	1/A6.1	SEE 7/A6.1
S12A	6' - 0"	1' - 3"	0' - 6"	OUT →	2/A6.1	SEE 7/A6.1
S13A	6' - 0"	1' - 3"	0' - 6"	← OUT	2/A6.1	SEE 7/A6.1
S14	6' - 0"	1' - 3"	0' - 6"	↓ OUT ↓	1/A6.1	SEE 7/A6.1
S15	6' - 0"	1' - 3"	VARIES	← OUT →	2/A6.1	SEE 7/A6.1
S16	6' - 0"	1' - 3"	0' - 4"	STAIRS / ELEVATORS →	2/A6.1	SEE 7/A6.1
S17	6' - 0"	1' - 3"	0' - 6"	← STAIRS	2/A6.1	SEE 7/A6.1
S18	6' - 0"	1' - 3"	0' - 6"	PARK →	2/A6.1	SEE 7/A6.1
S19	1' - 6"	1' - 6"	VARIES	STAIR ID	3/A6.1	SEE 8/A6.1
S20	2' - 0"	2' - 6"	0' - 3"	DO NOT PILE SNOW	3/A6.1	SEE 8/A6.1
S21	9"	9"	0' - 7/8"	EXIT SIGN (DOOR)	3/A6.1	SEE 8/A6.1
S22	9"	9"	0' - 3/4"	EXIT SIGN (STAIRS)	3/A6.1	SEE 8/A6.1
S23	9"	9"	0' - 3/4"	FIRE EQUIPMENT	3/A6.1	SEE 8/A6.1
S24	9"	6"	0' - 1/2"	IN CASE OF EMERGENCY	3/A6.1	SEE 8/A6.1
S25	VARIES	VARIES	1' - 3 1/2"	ELEVATOR LEVEL #	SURFACE MOUNT	SEE 8/A6.1
S26	6' - 0"	1' - 3"	0' - 6"	↓ OUT / PARK →	2/A6.1	SEE 7/A6.1
S27	WIDTH BASED ON FONT	4' - 8"	4' - 8"	VA	SURFACE MOUNT	SEE LOGO SIGNATURE ON VA SIGNAGE DESIGN GUIDE
S28	20"	6"	VARIES	NO SMOKING, NO FIREARMS, NO PHOTOGRAPHY	SURFACE MOUNT	SEE VA SIGNAGE MANUAL

SCHEDULE NOTES

1. DIE CAST ALUM. LETTERS. FONT: HELVETICA BOLD.
2. LOCATION OF ALL SIGNS ON SHEET A1.3 - A1.5. SEE CIVIL DRWGS FOR ADDITIONAL SITE SIGNAGE.

SK6

REVISED SIGNAGE SCHEDULE

VA MEDICAL CENTER EXPAND VISITOR/PATIENT PARKING GARAGE - PHASE 1

04/28/16 ADDENDUM 1