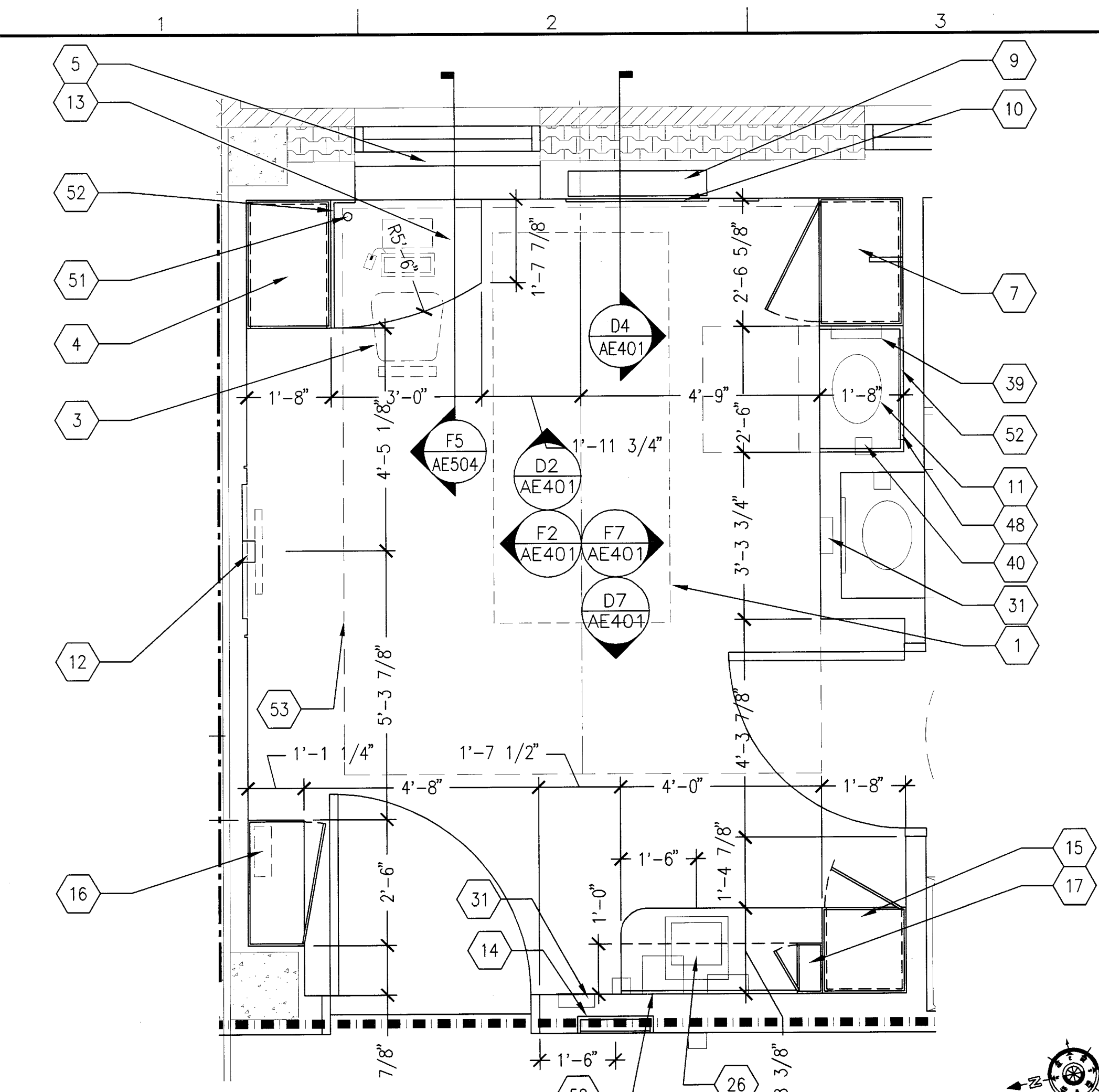
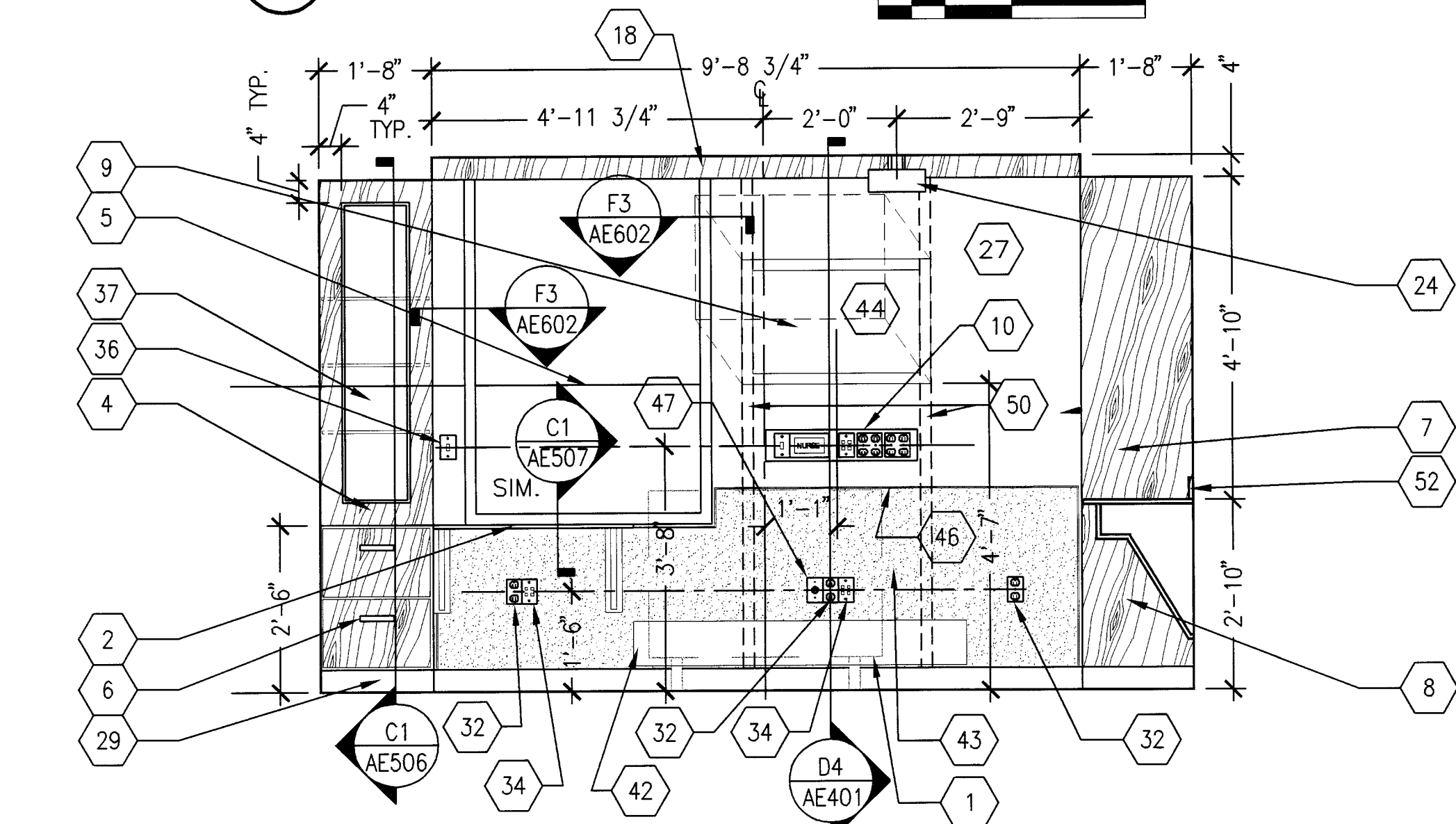


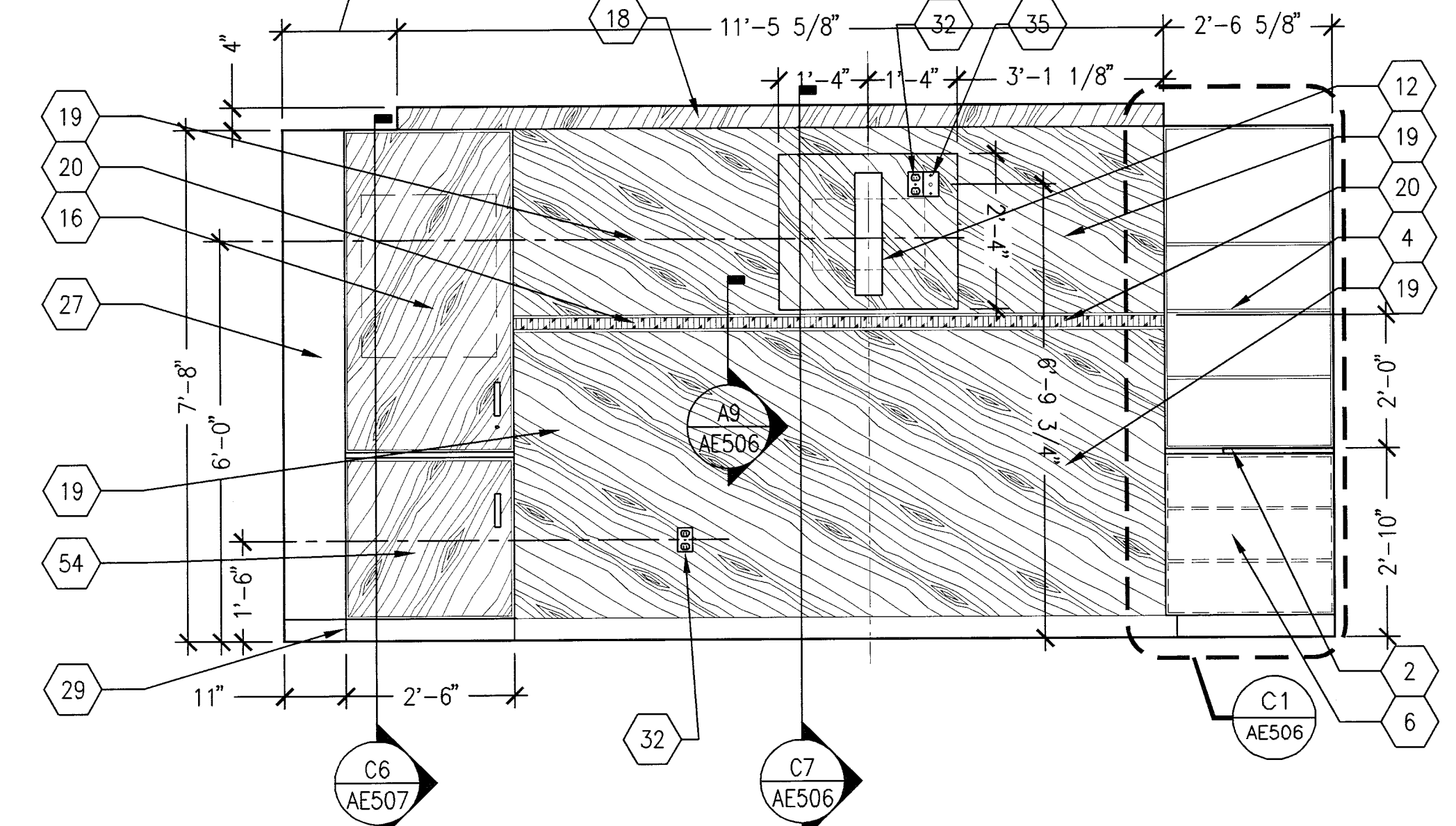
three inches = one foot
one and one half inches = one foot
one inch = one foot
three quarters inch = one foot
one half inch = one foot
three eighths inch = one foot
one eighth inch = one foot
one quarter inch = one foot



ENLARGED FLOOR PLAN
TYPICAL SINGLE RESIDENT BEDROOM
SCALE: 1/2" = 1'-0"



ENLARGED ELEVATION TYPICAL SINGLE PATIENT BEDROOM
SCALE: 1/2" = 1'-0"

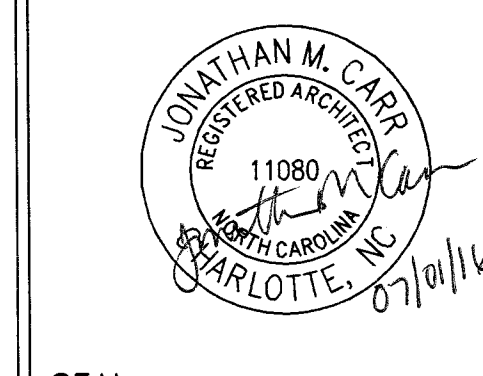


ENLARGED ELEVATION TYPICAL SINGLE RESIDENT BEDROOM
SCALE: 1/2" = 1'-0"

REVISION NO.	REVISION DESCRIPTION	DATE
1	AMENDMENT 1	07-01-2016



Department of Veterans Affairs
Louis A. Johnson
VA Medical Center
1 Med Center Drive
Clarksburg, WV 26301

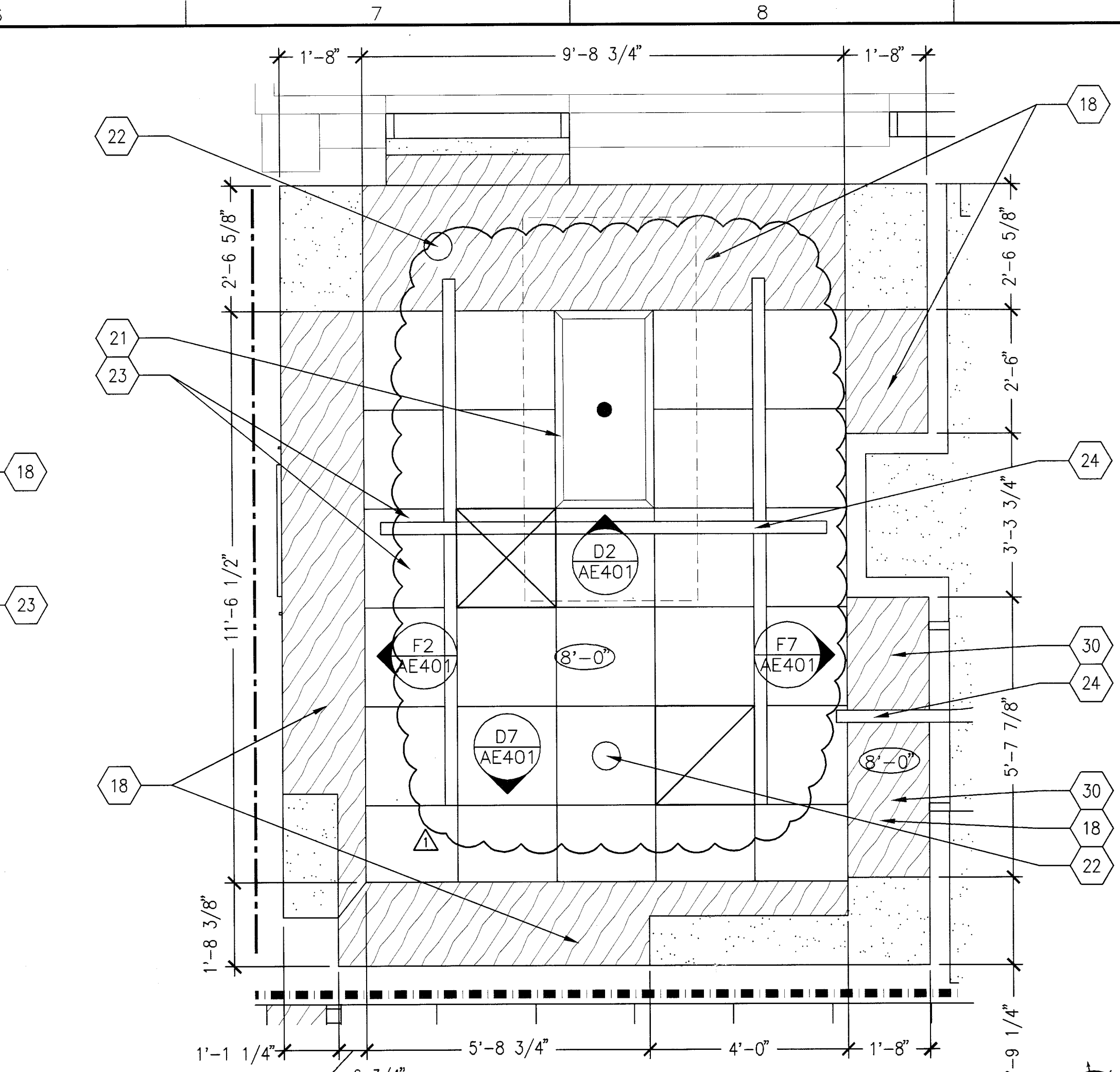
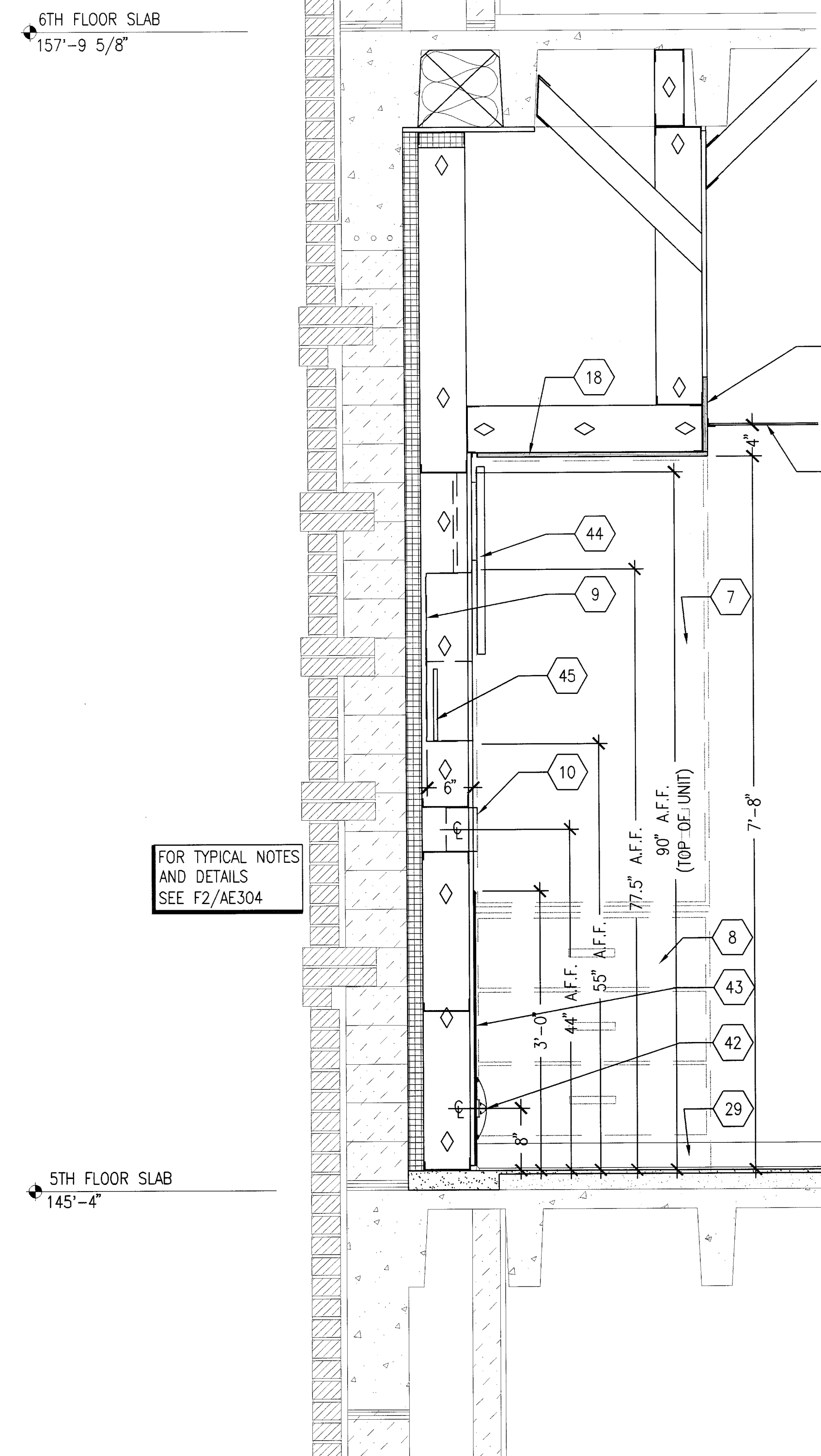


Architect/Engineer Address
HARRELL
DESIGN GROUP, P.C.
1016 TOWER POINT DRIVE
CHARLOTTE, NC 28227
P 704.814.1200
F 704.321.0533
WWW.HARRELLDC.COM
COPYRIGHT © 2014 HARRELL DESIGN GROUP, PC
HDC PROJECT # 12036

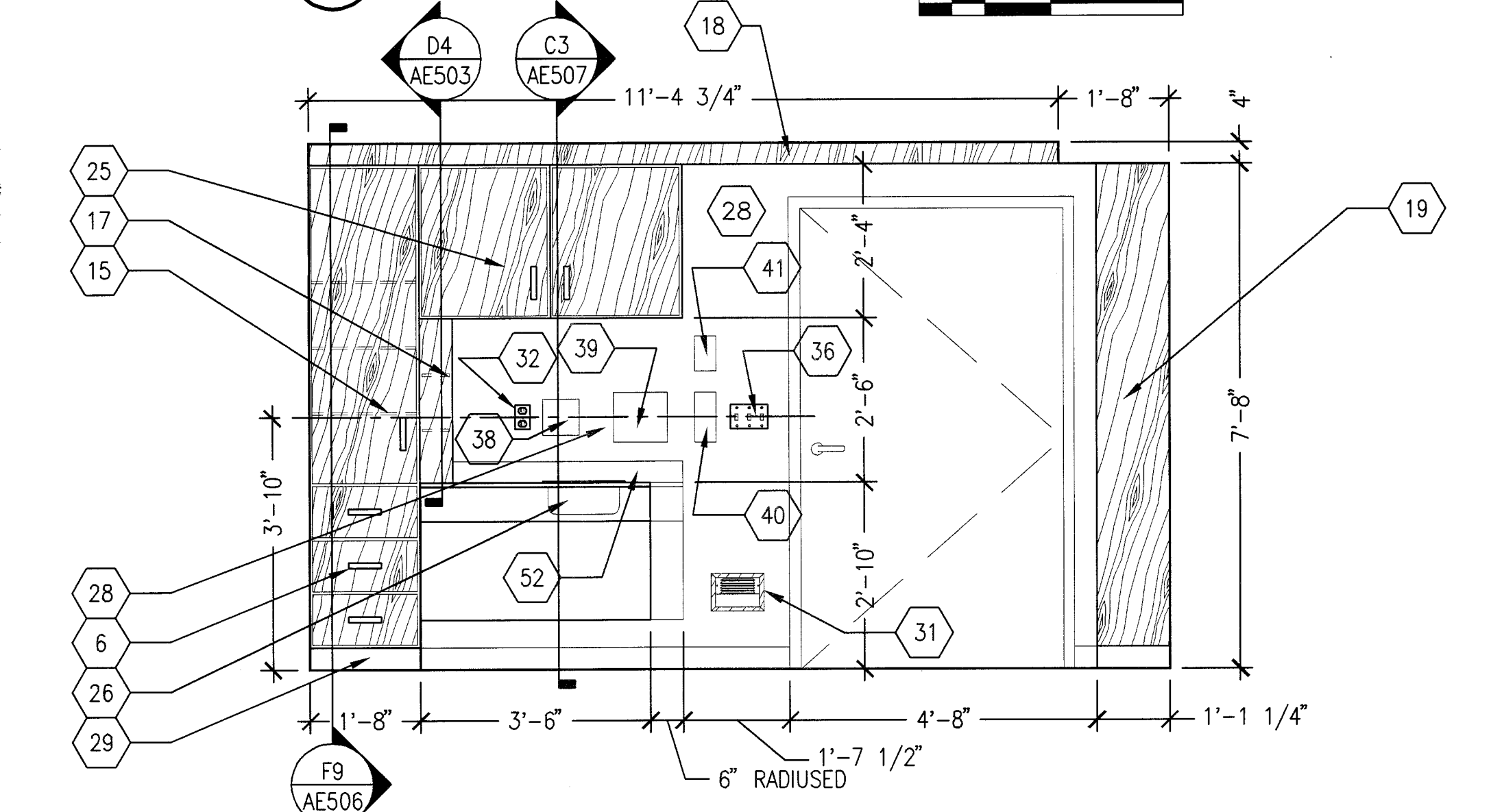


WALL SECTION AT PATIENT HEAD WALL
SCALE: 1" = 1'-0"
REFERENCE FROM: D2/AE401
REFERENCE FROM: D1/AE402

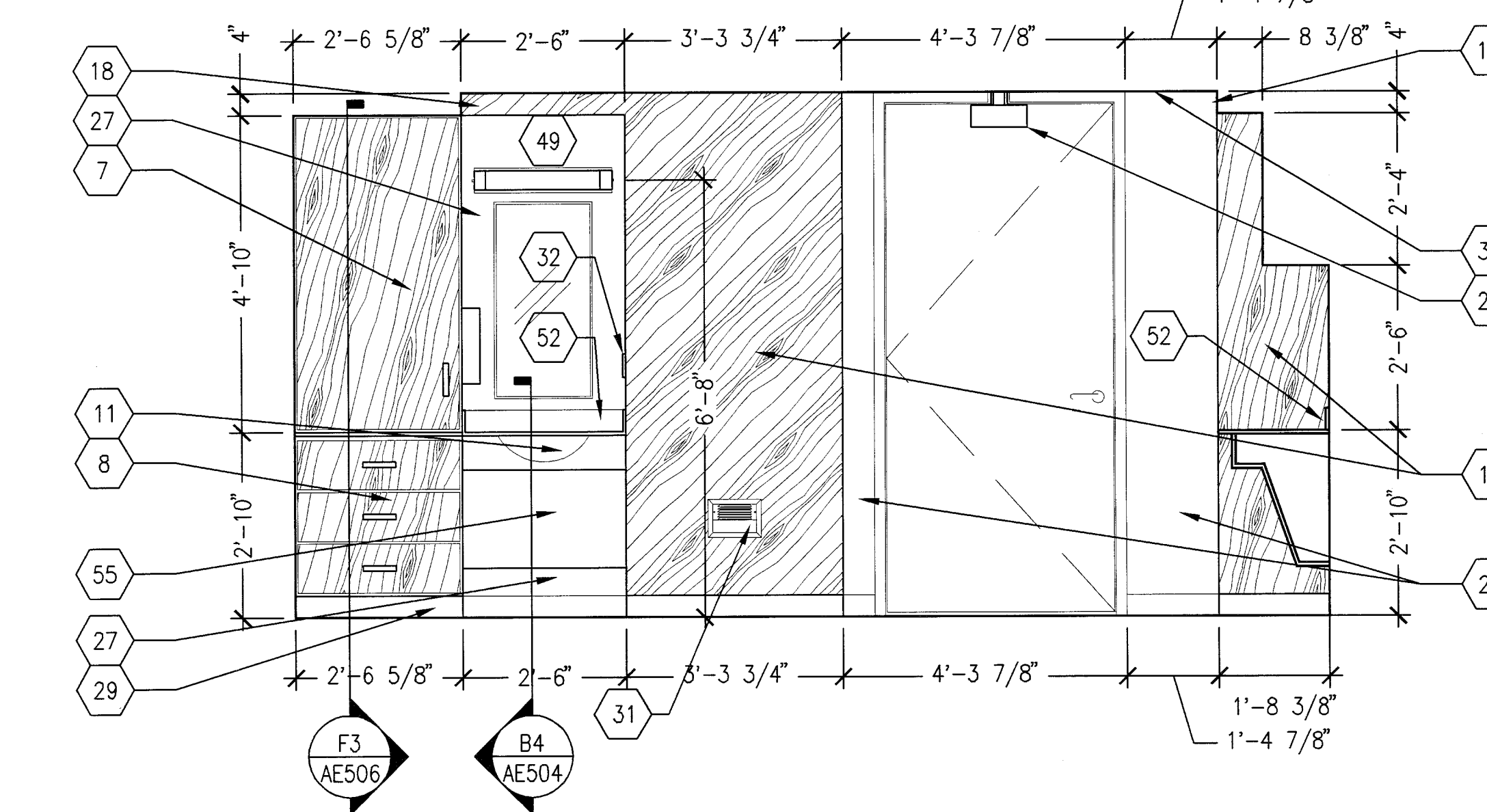
- SHEET KEYNOTES CONT.**
- 36. LIGHT SWITCH - SEE ELEC DWGS.
 - 37. PLASTIC INSERT.
 - 38. SHARPS CONTAINER (JSN#-A5106).
 - 39. PAPER TOWEL DISPENSER (JSN#-A5080).
 - 40. SOAP DISPENSER (JSN#-A5075).
 - 41. HAND SANITIZER DISPENSER.
 - 42. NEW CRASH RAIL.
 - 43. NEW HIGH IMPACT PROTECTION - 3'-0" HIGH.
 - 44. ARTWORK (BY OTHERS).
 - 45. MEDICAL GAS STUB-OUT BY HEADWALL MANUFACTURER. SEE PLUMBING PLANS FOR FINAL CONNECTION REQUIREMENTS.
 - 46. NEW HIGH IMPACT PROTECTION TRIM.
 - 47. MULTI-PIN CONNECTION - SEE ELECTRICAL DRAWINGS.
 - 48. MIRROR - 18" X 36" BY GC.
 - 49. LIGHT FIXTURE, SEE ELEC. DRAWINGS.
 - 50. UNISTRUT BEYOND BY PATIENT BED SERVICE UNIT MANUFACTURER.
 - 51. 2" PLASTIC GROMMET WITH CORD CAP (TYPICAL)
 - 52. BACK AND SIDE SPLASH
 - 53. LINE REPRESENTS BED CLEARANCE AREA
 - 54. SUITCASE CABINET
 - 55. SINK CASEWORK



ENLARGED REFLECTED CEILING PLAN
TYPICAL SINGLE RESIDENT BEDROOM
SCALE: 1/2" = 1'-0"



ENLARGED ELEVATION TYPICAL SINGLE RESIDENT BEDROOM
SCALE: 1/2" = 1'-0"



ENLARGED ELEVATION TYPICAL SINGLE RESIDENT BEDROOM
SCALE: 1/2" = 1'-0"

Recommended Approvals:	
1. MEDICAL DIRECTOR	6. OPERATIONS SERVICE LINE MANAGER
2. ASSOCIATE DIRECTOR	7. INFECTION CONTROL MANAGER
3. CHIEF OF STAFF	8. SAFETY MANAGER
4. ASSOC. DIRECTOR	9. GENERAL ENGINEER
5. SERVICE LINE MGRS.	10. COR

Drawing Title
ENLARGED PLANS AND ELEVATIONS - TYPICAL RESIDENT BEDROOMS

FINAL BID DOCUMENTS

FULLY SPRINKLERED

Project Title
CLC RENOVATION AND MODERNIZATION

Drawn Building Number AutoCAD File Name

Checked Reviewed Const. Contract No.

Date
12/05/2014

Project Number
244-12-R-0315

DRAWING No.
AE401

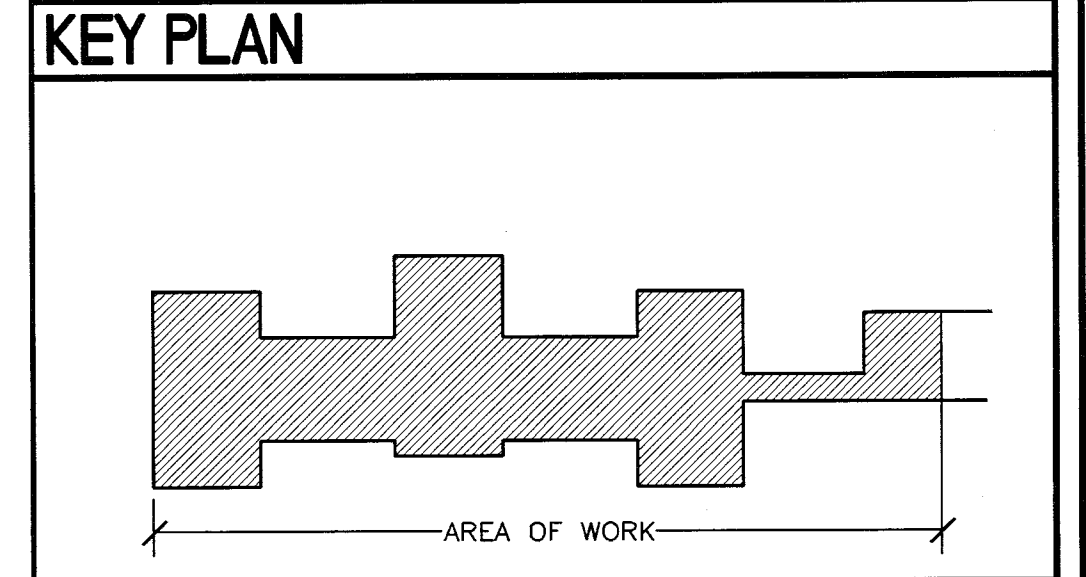
GENERAL SHEET NOTES

NOTE: REFER TO ALL PHASING SHEETS. GENERAL CONTRACTOR SHALL ENSURE THAT ALL CONTRACTORS ARE RESPONSIBLE FOR COORDINATION ACROSS ENTIRE SET OF CONSTRUCTION DOCUMENTS.

- A. REFER TO SHEET AE601 FOR WINDOW FRAMES AND WINDOW SCHEDULE.
- B. REFER TO SHEETS AF101 AND AF102 FOR ROOM FINISHES AND FINISH SCHEDULE.
- C. REFER TO SHEETS AE108, AE109 AND AE110 FOR ROOM EQUIPMENT AND EQUIPMENT SCHEDULE.
- D. REFER TO PLUMBING DRAWINGS FOR INFORMATION ON MEDICAL GAS EQUIPMENT AND PIPING.
- E. REFER TO ELECTRICAL DRAWINGS FOR INFORMATION ON NURSE CALL SYSTEM EQUIPMENT.
- F. TYPICAL ACOUSTICAL CEILING PANELS ARE AT 8'-0" A.F.F. U.N.O.
- G. TYPICAL GWB SOFFITS AND HARD CEILINGS ARE AT 7'-8" A.F.F. U.N.O.

- SHEET KEYNOTES**
- 1. RESIDENT BED.
 - 2. DESK. MATCH HT TO EXIST SILL HT.
 - 3. CHAIR.
 - 4. SHELVING UNIT.
 - 5. WINDOW SHELF.
 - 6. NIGHTSTAND DRAWERS.
 - 7. WARDROBE.
 - 8. WARDROBE DRAWERS.
 - 9. RECESSED MEDICAL GAS SYSTEM.
 - 10. HEAD WALL UNIT WITH NURSE CALL, ELEC. OUTLETS, EMERGENCY OUTLET, AND LIGHT SWITCH. SEE ELEC DWGS FOR ADDITIONAL INFO.
 - 11. RESIDENT SINK.
 - 12. TV EQUIPMENT MOUNT.
 - 13. WASTEBASKET.
 - 14. MEMORY BOX WITH MAILBOX BELOW.
 - 15. LINENS CABINET.
 - 16. LOCKING MEDICINE CABINET.
 - 17. P.P.E. CABINET
 - 18. WOOD PLAM SOFFIT PANELING WITH HALF INCH ALUMINUM REGLETS.
 - 19. WOOD PLAM WALL PANELING WITH HALF INCH ALUMINUM REGLETS.
 - 20. CORK TACKSTRIP WITH HALF INCH ALUMINUM REGLETS.
 - 21. 2X4 LAY-IN LIGHT FIXTURE.
 - 22. CAN DOWN-LIGHT FIXTURE.
 - 23. ACOUSTICAL CEILING PANELS AND GRID.
 - 24. PATIENT LIFT SYSTEM.
 - 25. CAREGIVER STORAGE.
 - 26. CAREGIVER SINK.
 - 27. PAINTED WALL - FIELD COLOR.
 - 28. PAINTED WALL - ACCENT COLOR.
 - 29. LINOLEUM INTEGRAL COVE BASE.
 - 30. SOFFIT HEIGHT 8'-0".
 - 31. NIGHT LIGHT - SEE ELEC DWGS.
 - 32. ELECTRICAL OUTLET - SEE ELEC DWGS.
 - 33. EMERGENCY OUTLET - SEE ELEC DWGS.
 - 34. DATA AND PHONE OUTLET - SEE ELEC DWGS.
 - 35. CABLE TV OUTLET - SEE ELEC DWGS.

- SYMBOLS LEGEND**
- EXISTING WALL, DOOR, WINDOW, MILLWORK, FIXTURE OR OTHER FUTURE OR ASSEMBLY TO BE REMOVED.
 - EXISTING WALL, DOOR, WINDOW, MILLWORK, FIXTURE OR OTHER FUTURE OR ASSEMBLY TO REMAIN.
 - NEW WALL
 - SMOKE TIGHT WALL
 - 2 HOUR RATED FIRE/SMOKE WALL
 - 1 HOUR FIRE RATED WALL
 - 1 HOUR RATED FIRE/SMOKE WALL
 - NO PIPING OR DUCTWORK SHALL BE ROUTED THROUGH ELECTRICAL AND/OR DATA ROOMS.
 - EXISTING CONCRETE COLUMN



GENERAL SHEET NOTES

NOTE: REFER TO ALL PHASING SHEETS. GENERAL CONTRACTOR SHALL ENSURE THAT ALL CONTRACTORS ARE RESPONSIBLE FOR COORDINATION ACROSS ENTIRE SET OF CONSTRUCTION DOCUMENTS.

- REFER TO SHEET AE601 FOR WINDOW FRAMES AND WINDOW SCHEDULE.
- REFER TO SHEETS AF101 AND AF102 FOR ROOM FINISHES AND FINISH SCHEDULE.
- REFER TO SHEETS AE108, AE109 AND AE110 FOR ROOM EQUIPMENT AND EQUIPMENT SCHEDULE.
- REFER TO PLUMBING DRAWINGS FOR INFORMATION ON MEDICAL GAS EQUIPMENT AND PIPING.
- REFER TO ELECTRICAL DRAWINGS FOR INFORMATION ON NURSE CALL SYSTEM EQUIPMENT.
- TYPICAL ACOUSTICAL CEILING PANELS ARE AT 8'-0" A.F.F. U.N.O.
- TYPICAL GWB SOFFITS AND HARD CEILINGS ARE AT 7'-8" A.F.F. U.N.O.

SHEET KEYNOTES

- RESIDENT BED.
- DESK. MATCH HT TO EXIST SILL HT.
- CHAIR BY OWNER
- SHELVING UNIT.
- WINDOW SHELF.
- NIGHTSTAND DRAWERS.
- WARDROBE.
- WARDROBE DRAWERS.
- RECESSED MEDICAL GAS SYSTEM.
- HEAD WALL UNIT WITH NURSE CALL, ELEC. OUTLETS, EMERGENCY OUTLET, AND LIGHT SWITCH. SEE ELEC DWGS FOR ADDITIONAL INFO.
- RESIDENT SINK.
- TV EQUIPMENT MOUNT BY GC.
- WASTEBASKET BY OWNER
- MEMORY BOX WITH MAILBOX BELOW.
- LINENS CABINET.
- LOCKING MEDICINE CABINET.
- P.P.E. CABINET
- WOOD PLAM SOFFIT PANELING WITH HALF INCH ALUMINUM REVEALS.
- WOOD PLAM WALL PANELING WITH HALF INCH ALUMINUM REGLETS.
- CORK TACKSTRIP WITH HALF INCH ALUMINUM.
- 2X4 LAY-IN LIGHT FIXTURE
- CAN DOWN-LIGHT FIXTURE
- ACOUSTICAL CEILING PANELS AND GRID
- PATIENT LIFT SYSTEM
- CAREGIVER STORAGE
- HANDWASH SINK FOR CAREGIVER
- PAINTED WALL - FIELD COLOR
- PAINTED WALL - ACCENT COLOR
- LINOLEUM INTEGRAL COVE BASE.
- SOFFIT HEIGHT 8'-0"
- NIGHT LIGHT - SEE ELEC DWGS
- ELECTRICAL OUTLET - SEE ELEC DWGS
- EMERGENCY OUTLET - SEE ELEC DWGS
- DATA AND PHONE OUTLET - SEE ELEC DWGS
- CABLE TV OUTLET - SEE ELEC DWGS

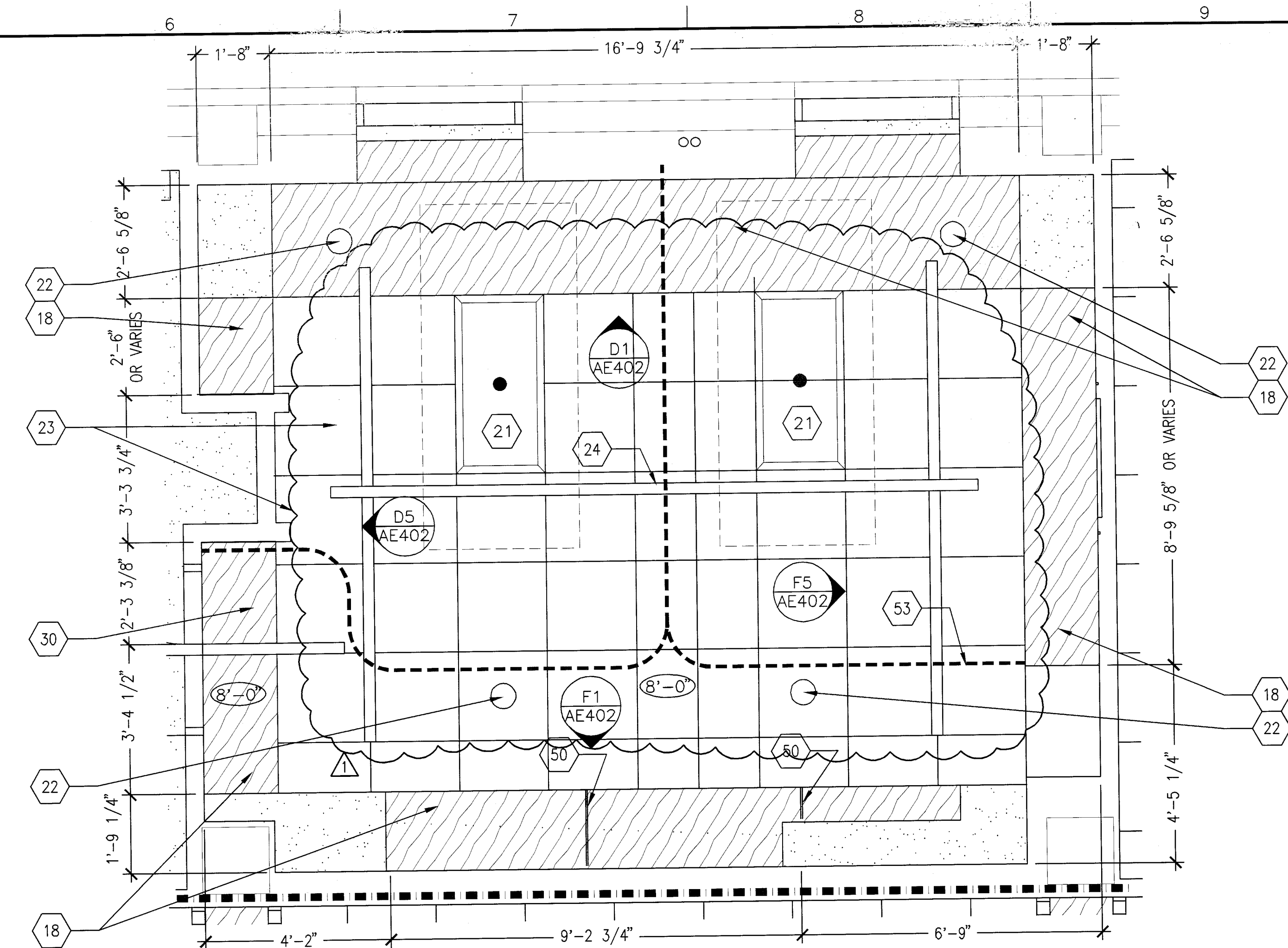
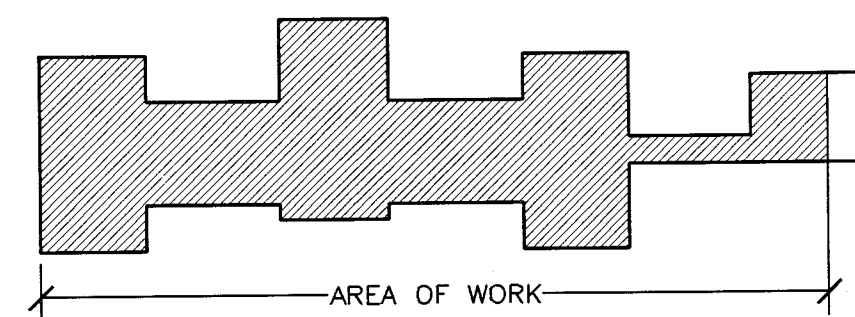
SHEET KEYNOTES CONT.

36. LIGHT SWITCH - SEE ELEC DWGS
37. PLASTIC INSERT
38. SHARPS CONTAINER (JSN#-A5106)
39. PAPER TOWEL DISPENSER (JSN#-A5080)
40. SOAP DISPENSER (JSN#-A5075)
41. HAND SANITIZER DISPENSER.
42. NEW CRASH RAIL.
43. NEW HIGH IMPACT PROTECTION - 3'-0" HIGH.
44. ART WORK BY G.C.
45. MULTI-PIN CONNECTION - SEE ELECTRICAL
46. SUITCASE CABINET
47. REPRESENTS BED CLEARANCE
48. MIRROR - 18" X 36"
49. LIGHT FIXTURE, SEE ELEC. DRAWINGS.
50. 1/2" X 5/8" ALUMINUM REVEAL
51. PREFABRICATED 2" PLASTIC GROMMET WITH CORD CAP.
52. BACK AND SIDE SPLASH
53. CURTAIN TRACK

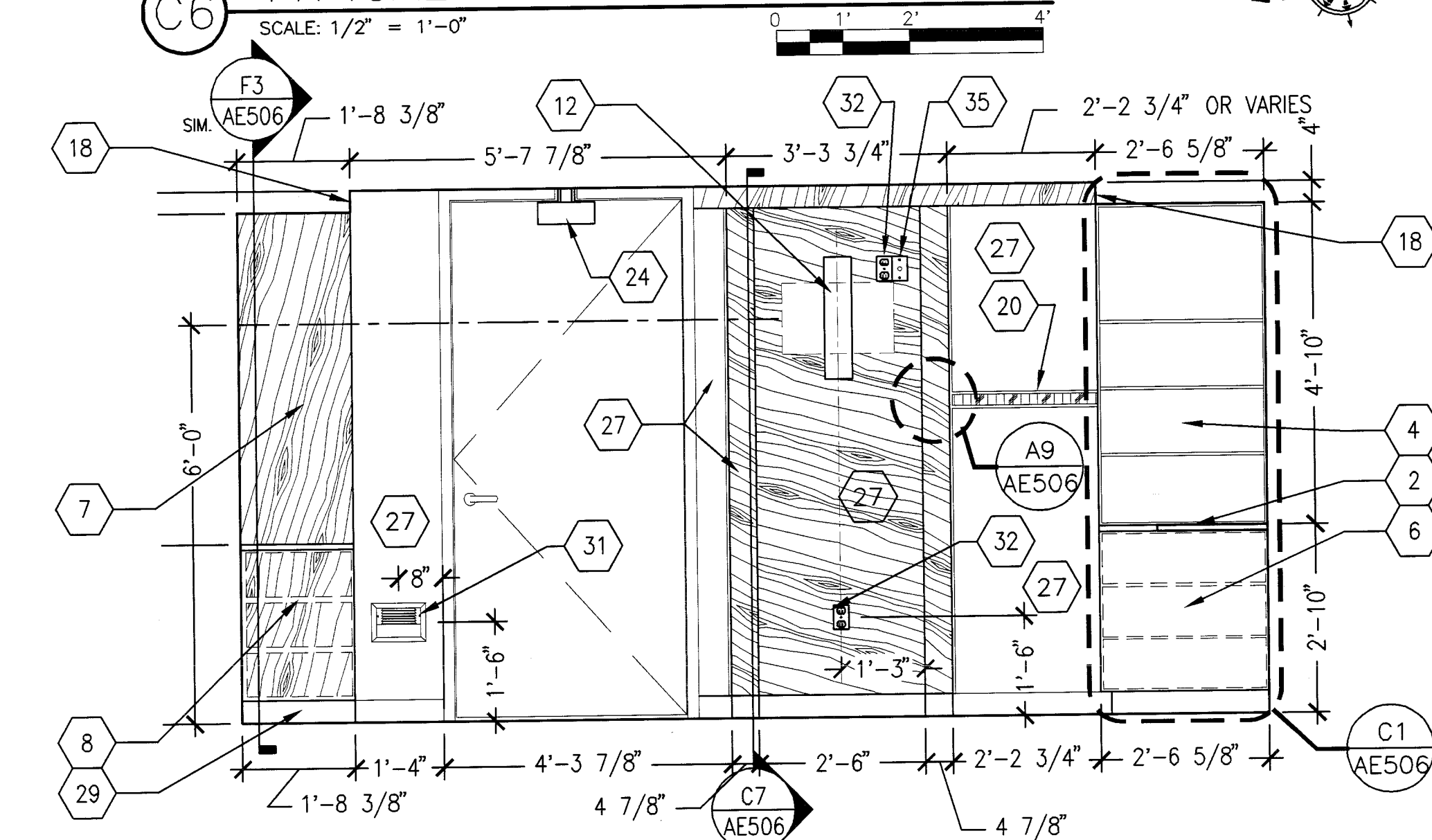
SYMBOLS LEGEND

- EXISTING WALL, DOOR, WINDOW, MILLWORK, FIXTURE OR OTHER FIXTURE OR ASSEMBLY TO BE REMOVED.
- EXISTING WALL, DOOR, WINDOW, MILLWORK, FIXTURE OR OTHER FIXTURE OR ASSEMBLY TO REMAIN.
- NEW WALL
- SMOKE TIGHT WALL
- 2 HOUR RATED FIRE/SMOKE WALL
- 1 HOUR FIRE RATED WALL
- 1 HOUR RATED FIRE/SMOKE WALL
- NO PIPING OR DUCTWORK SHALL BE ROUTED THROUGH ELECTRICAL AND/OR DATA ROOMS.
- EXISTING CONCRETE COLUMN

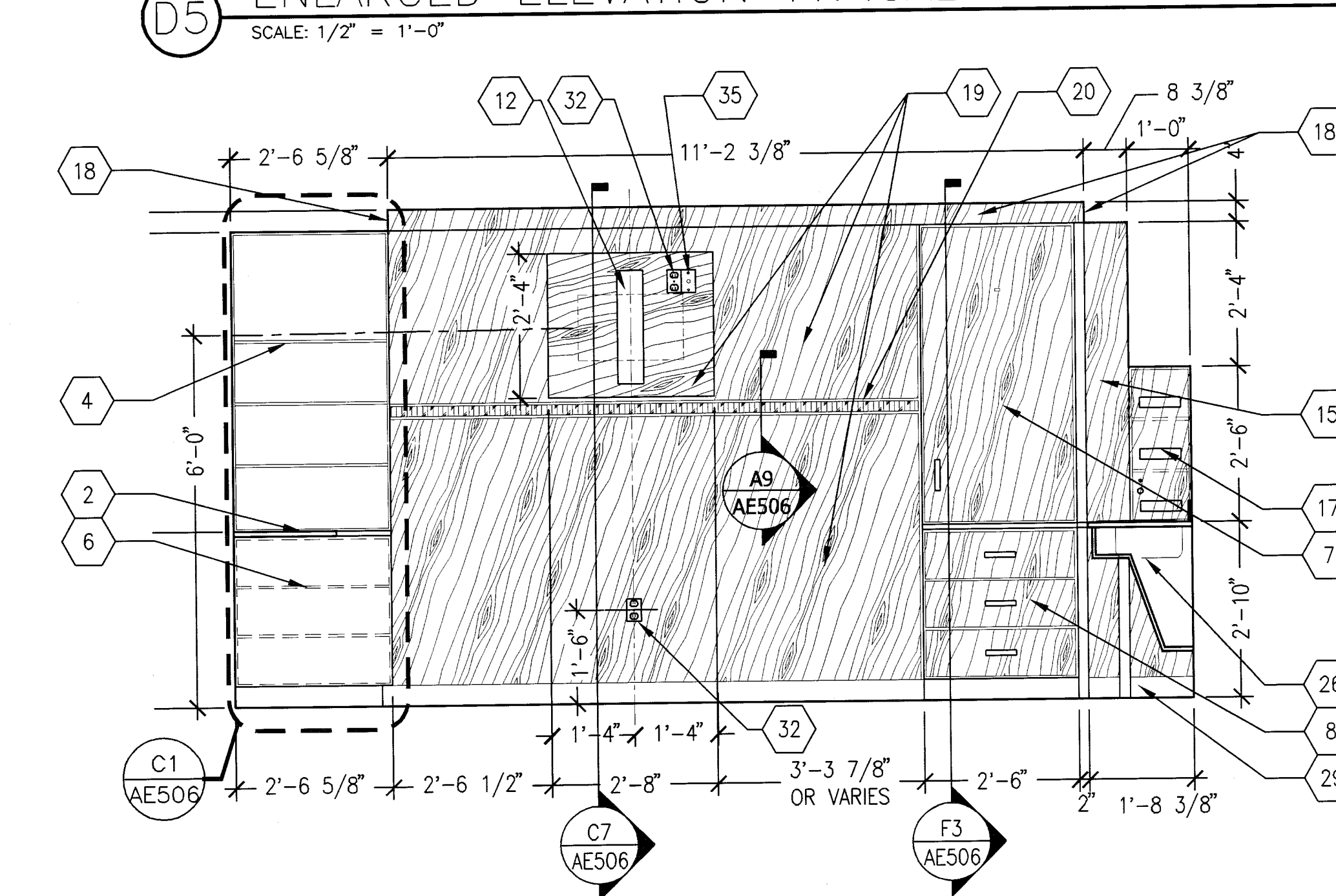
KEY PLAN



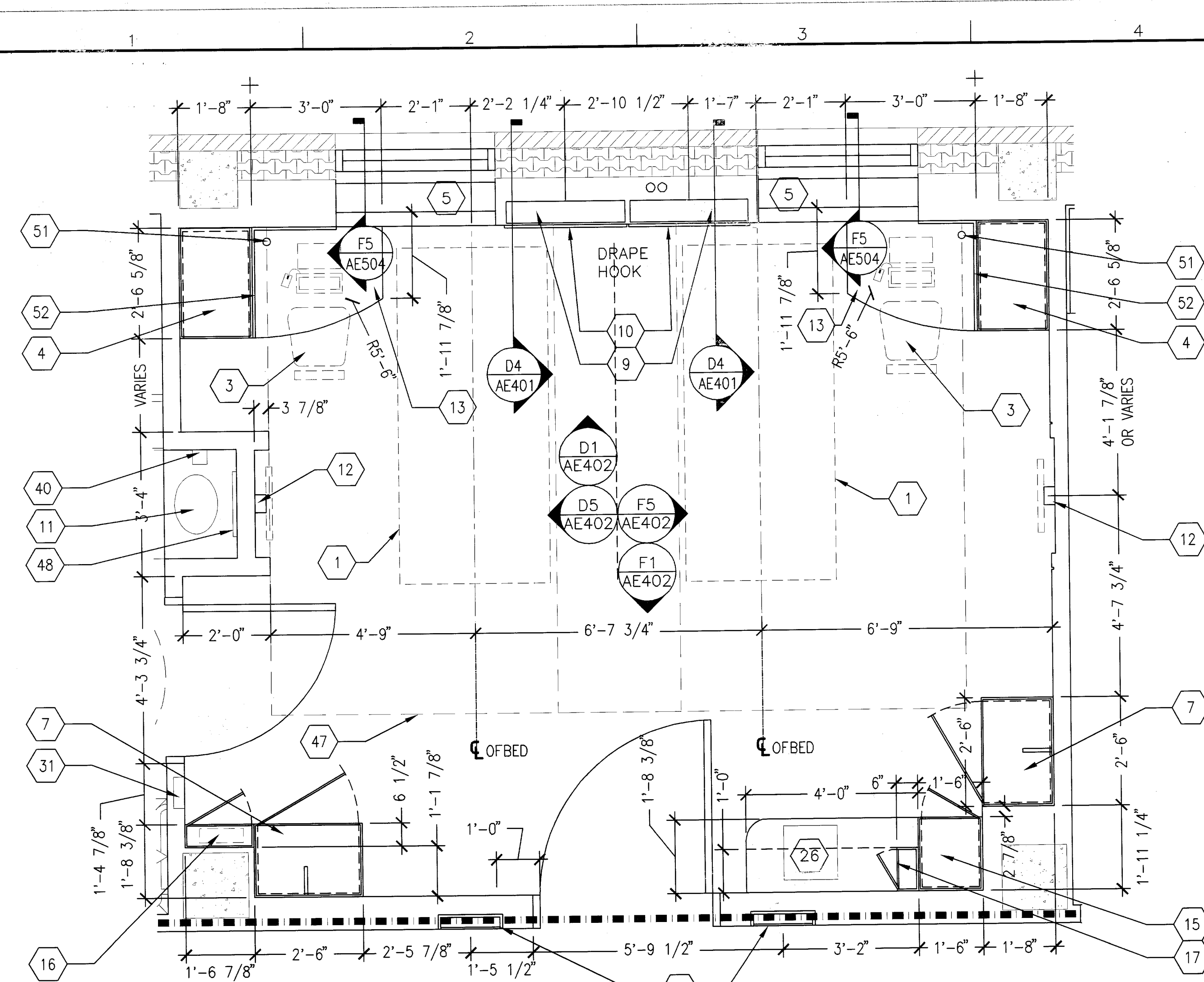
ENLARGED REFLECTED CEILING PLAN
TYPICAL DOUBLE RESIDENT BEDROOM



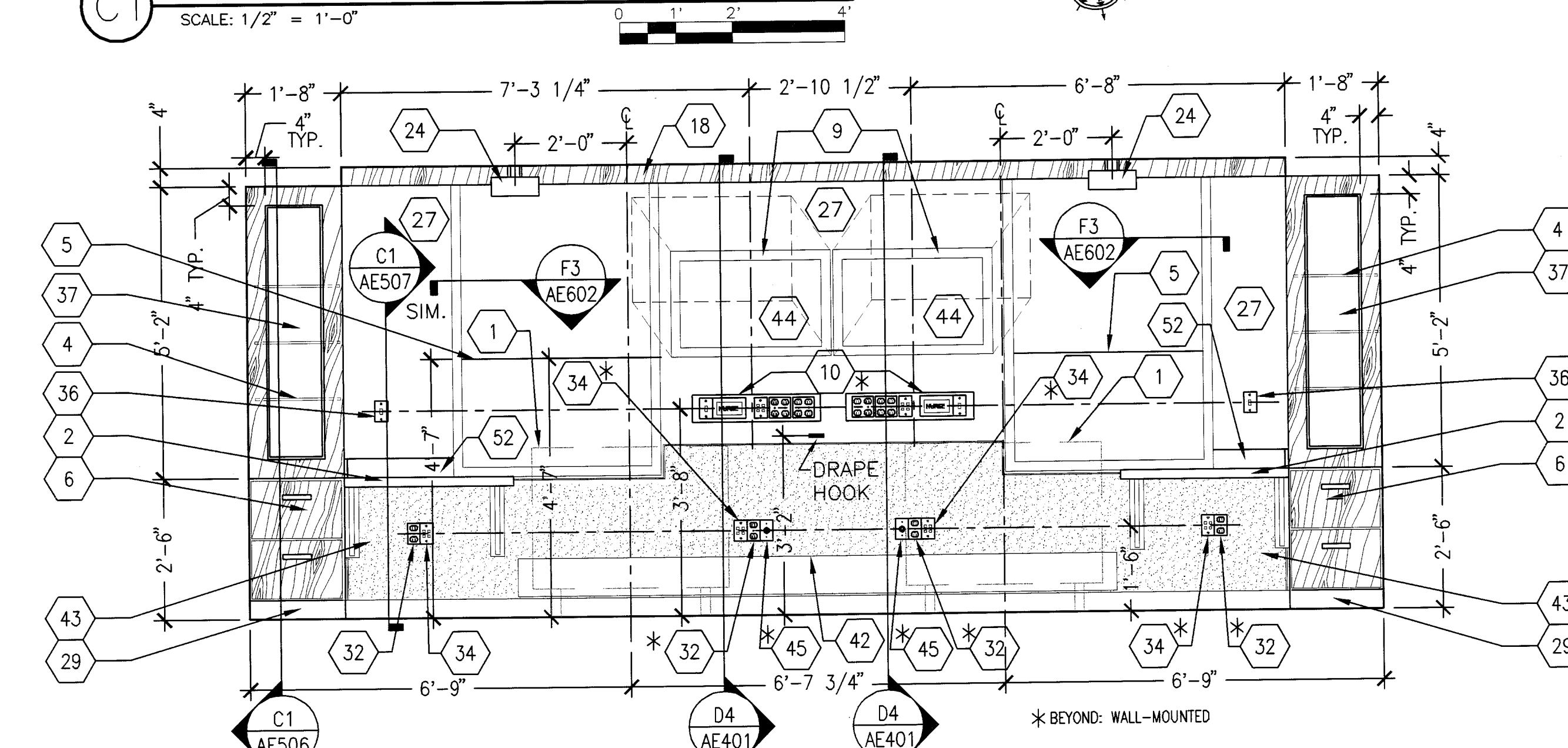
ENLARGED ELEVATION TYPICAL DOUBLE RESIDENT BEDROOM



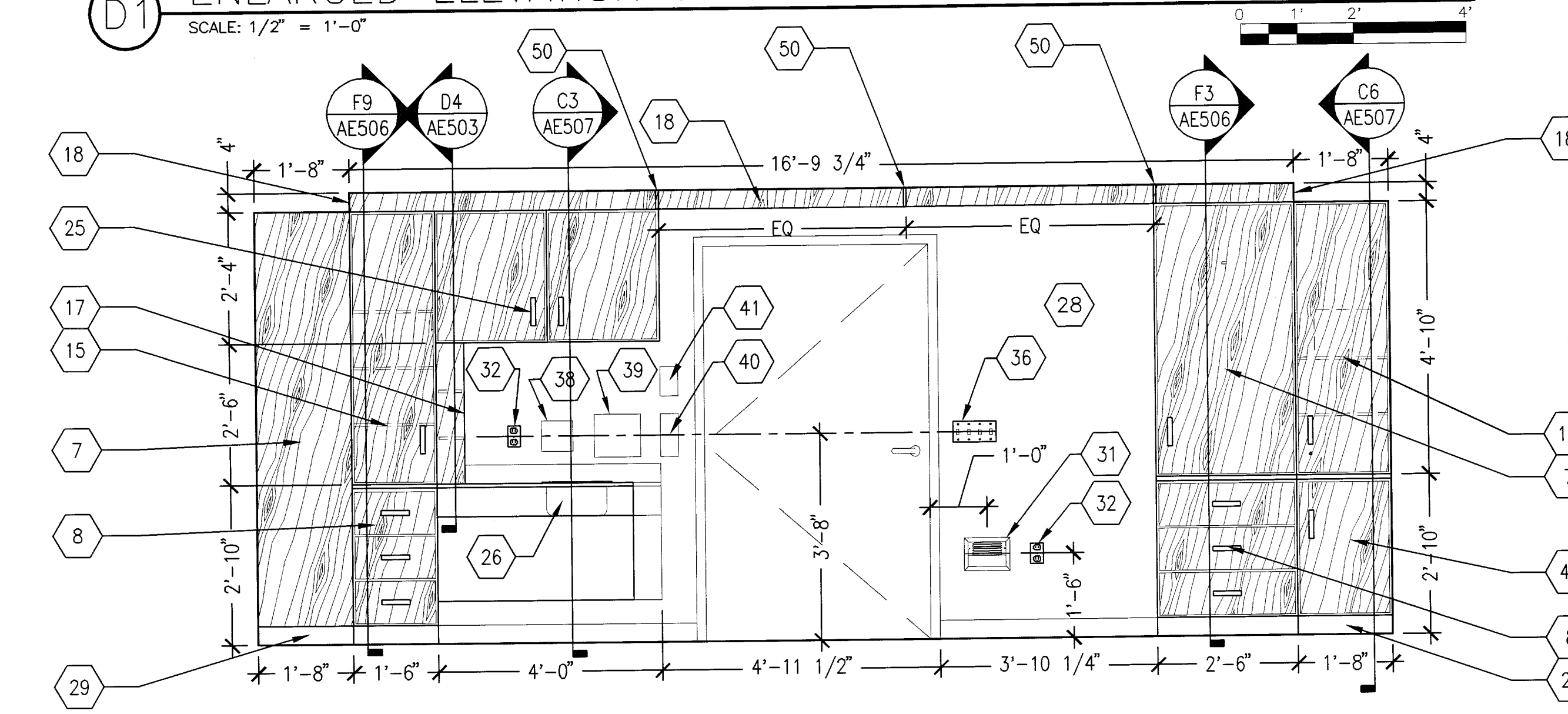
ENLARGED ELEVATION TYPICAL DOUBLE RESIDENT BEDROOM



ENLARGED FLOOR PLAN
TYPICAL DOUBLE RESIDENT BEDROOM



ENLARGED ELEVATION TYPICAL DOUBLE RESIDENT BEDROOM



ENLARGED ELEVATION TYPICAL DOUBLE RESIDENT BEDROOM

SCALE: 1/2" = 1'-0"

REVISION NO.	REVISION DESCRIPTION	DATE
1	AMENDMENT 1	07-01-2016

Department of Veterans Affairs
Louis A. Johnson
VA Medical Center
1 Med Center Drive
Clarksburg, WV 26301

Architect/Engineer Address
HARRELL
DESIGN GROUP, P.C.
2016 TOWER POINT DRIVE
CHARLOTTE, NC 28227
P 704.814.1320
F 704.321.0833
WWW.HARRELLGROUP.COM
COPYRIGHT © 2014 HARRELL DESIGN GROUP, PC
HIG PROJECT # 12036

Recommended Approvals:	
1. MEDICAL DIRECTOR	6. OPERATIONS SERVICE LINE MANAGER
2. ASSOCIATE DIRECTOR	7. INFECTION CONTROL MANAGER
3. CHIEF OF STAFF	8. SAFETY MANAGER
4. ASSOC. DIRECTOR	9. GENERAL ENGINEER
5. SERVICE LINE MGRS.	10. COR

Drawing Title
ENLARGED PLANS AND ELEVATIONS - TYPICAL RESIDENT BEDROOMS

Project Title
CLC RENOVATION AND MODERNIZATION

Date
12/05/2014
Project Number
244-12-R-0315
Drawing No.
AE402

Veterans Affairs