

CONTROLS AND DESIGN UPGRADES FOR TWO DUAL TURBINE WITH JOCKEY PUMP SYSTEMS AND ONE CENTRIFUGAL PRESSURE MAINTENANCE PUMP.

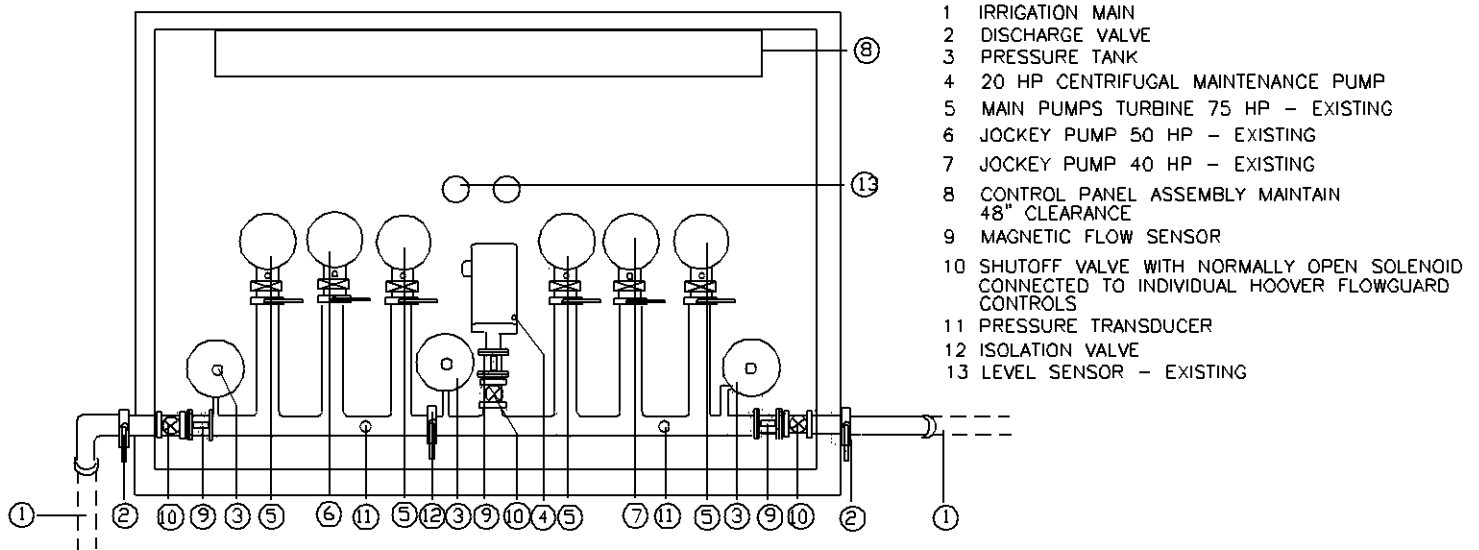
COMMUNICATION VIA CELLULAR MODEM OR 10/100 BASE T DIRECT ETHERNET CONNECTION.
USER DEFINED INTERNET BASED CONTROL PARAMETERS USING STANDARD WEB BROWSER WITH
EVENT LOGGING AND EMAIL ALERTS FOR WARNINGS AND ALARMS AS FOLLOWS:

- X MAXIMUM GALLON PER MINUTE USAGE WITH ADJUSTABLE TIME DELAY AND NUMBER OF RESTART ATTEMPTS
- X MINIMUM TOTAL DAILY WATER USAGE
- X DAILY, MONTHLY AND ANNUAL WATER USAGE BUDGETS
- X GRAPHING OF REAL TIME AND HISTORICAL FLOW, INCOMING AND DISCHARGE PRESSURE LAKE WATER LEVEL AND SYSTEM EVENTS WITH TIME AND DATE SHOWN
- X RAIN SENSOR STATUS
- X HISTORIC WATER USAGE BY DAY AND MONTH
- X STARTER OVERLOAD FAULT SHUTDOWN

EXISTING EQUIPMENT:

THE CONTROLS SYSTEM RETROFIT AND UPGRADE AND PUMP STATION UPGRADES ARE DESIGNED TO MAKE USE OF AS MUCH OF THE EXISTING PUMP STATION EQUIPMENT AS POSSIBLE. EXISTING EQUIPMENT THAT WILL BE REUSED INCLUDES:

- PUMP STATION BUILDING, INCLUDING PUMP MOUNTING PADS, VENTILATION, LIGHTING, ETC.
- (4) 75 HP VERTICAL HOLLOW SHAFT TURBINE PUMPS, WATER LUBRICATED, WITH DISCHARGE HEADS, MECHANICAL SEALS, AND 1800 RPM, 60HZ ELECTRIC MOTORS.
- (1) 50 HP VERTICAL HOLLOW SHAFT TURBINE PUMP, WATER LUBRICATED, WITH DISCHARGE HEADS MECHANICAL SEAL, AND 1800 RPM, 60HZ ELECTRIC MOTORS.
- (1) 40 HP VERTICAL HOLLOW SHAFT TURBINE PUMP, WATER LUBRICATED, WITH DISCHARGE HEADS MECHANICAL SEAL, AND 1800 RPM, 60HZ ELECTRIC MOTORS.
- 460V 3-PHASE ELECTRICAL SERVICE
- 600A DISCONNECT
- AIR CONDITIONERS



NOT TO SCALE
PLAN VIEW

STATION A, MODEL HT2-75J50PDV-460/3-MR2U-2 - NORTH IRRIGATION AREAS

PUMP PERFORMANCE:
800 GPM @ 90 PSI EACH 1,600 TOTAL GPM

STATION B, MODEL HT2-75J40PDV-460/3-MR2U-2 - SOUTH IRRIGATION AREAS

PUMP PERFORMANCE:
800 GPM @ 90 PSI EACH 1,600 TOTAL GPM

THE PRESSURE MAINTENANCE PUMP, MODEL HC-20PDV-460/3-MR2U-2 - BELOW RANGE OF STATIONS A AND B.

PUMP PERFORMANCE:
200 GPM @ 85 PSI

FLORIDA NATIONAL CEMETERY - BUSHNELL
TURBINE PUMP SYSTEM DETAIL IN BUILDING
WETWELL, PRESSURE DEMAND, VARIABLE FREQUENCY DRIVE (VFD)
MAINTENANCE PUMP 20 HP, HOOVER FLOWGUARD®