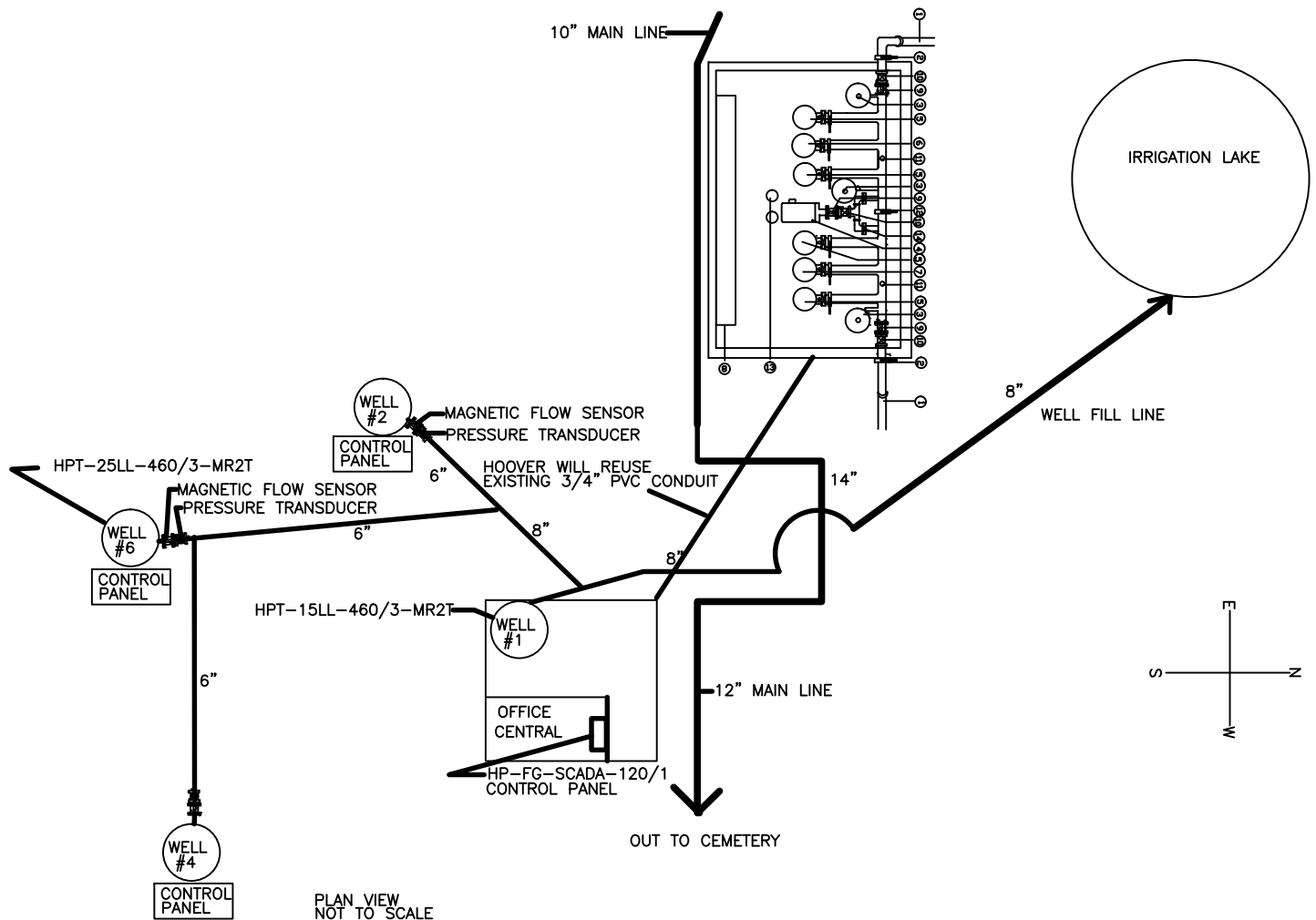


COMMUNICATION VIA CELLULAR MODEM OR 10/100 BASE T DIRECT ETHERNET CONNECTION.
 USER DEFINED INTERNET BASED CONTROL PARAMETERS USING STANDARD WEB BROWSER WITH
 EVENT LOGGING AND EMAIL ALERTS FOR WARNINGS AND ALARMS AS FOLLOWS:

- X MAXIMUM GALLON PER MINUTE USAGE WITH ADJUSTABLE TIME DELAY AND NUMBER OF RESTART ATTEMPTS
- X MINIMUM TOTAL DAILY WATER USAGE
- X DAILY, MONTHLY AND ANNUAL WATER USAGE BUDGETS
- X GRAPHING OF REAL TIME AND HISTORICAL FLOW, INCOMING AND DISCHARGE PRESSURE
- X WATER LEVEL AND SYSTEM EVENTS WITH TIME AND DATE SHOWN
- X HISTORIC WATER USAGE BY DAY AND MONTH
- X STARTER OVERLOAD FAULT SHUTDOWN

EXISTING EQUIPMENT:
 REFILL CONTROLS SYSTEM RETROFIT AND UPGRADE IS DESIGNED TO MAKE USE OF AS MUCH OF THE EXISTING PUMP
 STATION EQUIPMENT AS POSSIBLE. EXISTING
 EQUIPMENT THAT WILL BE REUSED INCLUDES:

(3) 25HP TURBINE PUMPS AND MOTORS, (1) 15HP TURBINE PUMP AND MOTOR, INDUSTRIAL ELECTRICAL PANEL ENCLOSURES,
 DISCONNECTS, MOTOR WIRING FROM WELL PUMP HOUSE TO MOTORS, WELLS, DISCHARGE LINES, 460V 3-PHASE ELECTRICAL
 SERVICE, 3/4" ELECTRICAL CONDUIT BETWEEN MAIN PUMP HOUSE AND WELL PUMP HOUSE WILL BE REUSED FOR A TWISTED-
 SHIELDED PAIR CABLE. CONDUITS AND CONTROL WIRING BETWEEN WELL PUMP HOUSE AND REFILL WELL SENSORS WILL BE REUSED,
 IF POSSIBLE, FOR SIGNAL CABLES.



Pompano Beach, Florida, Tel 954-971-7350

FLORIDA NATIONAL CEMETERY – BUSHNELL REFILL WELL PUMPS FLOWGUARD SCADA

FILE: PN13129 07/30/2014