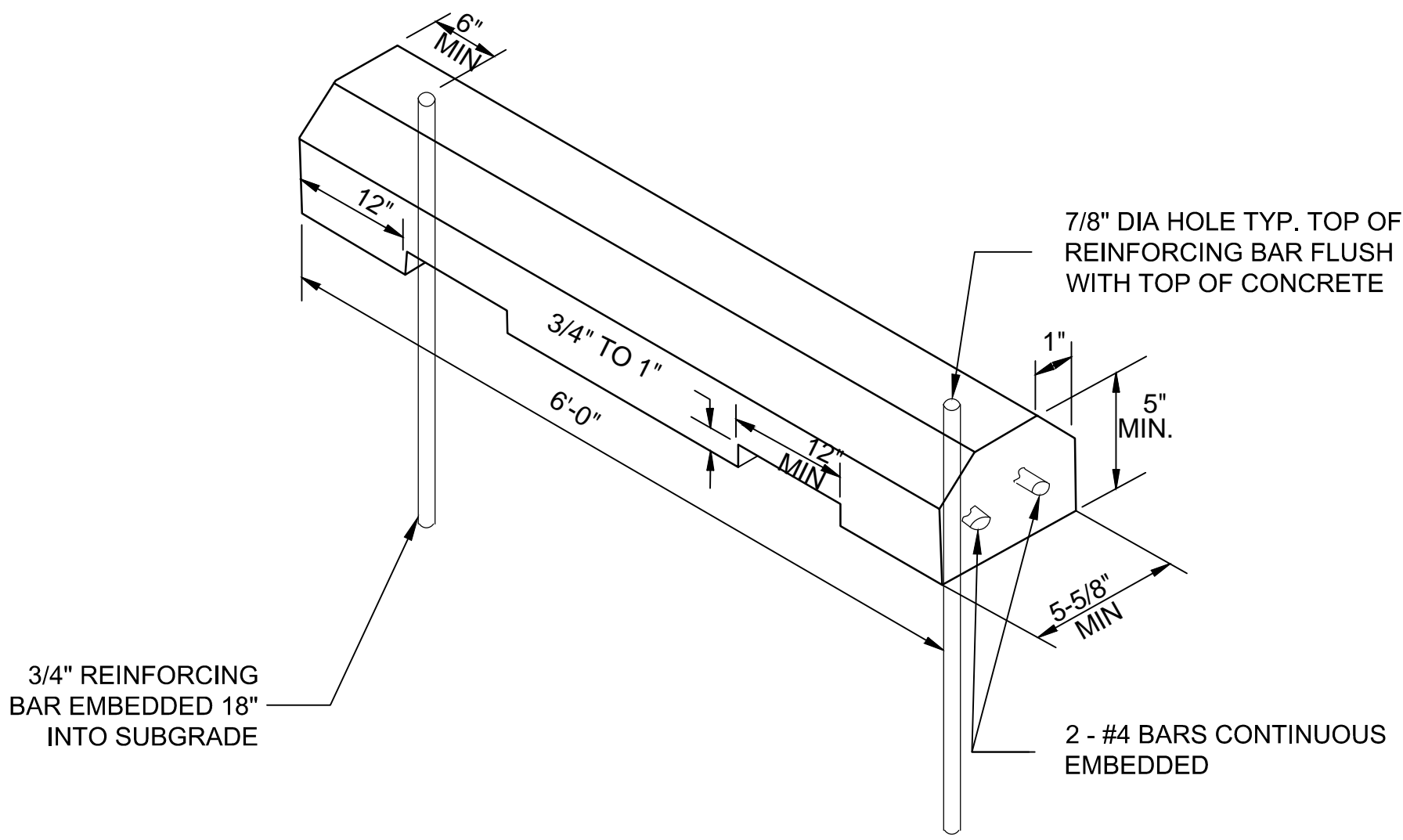
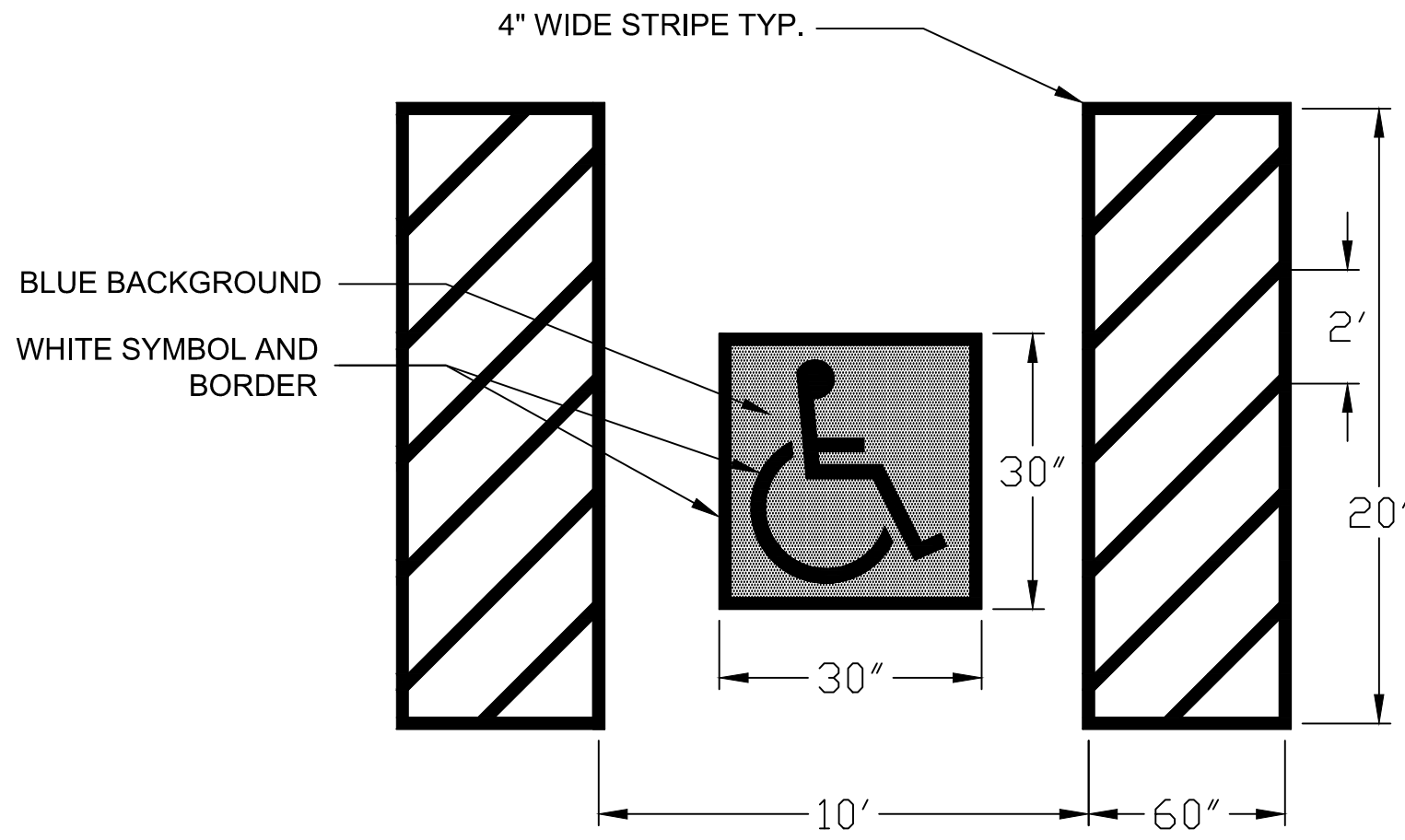


GENERAL NOTES:

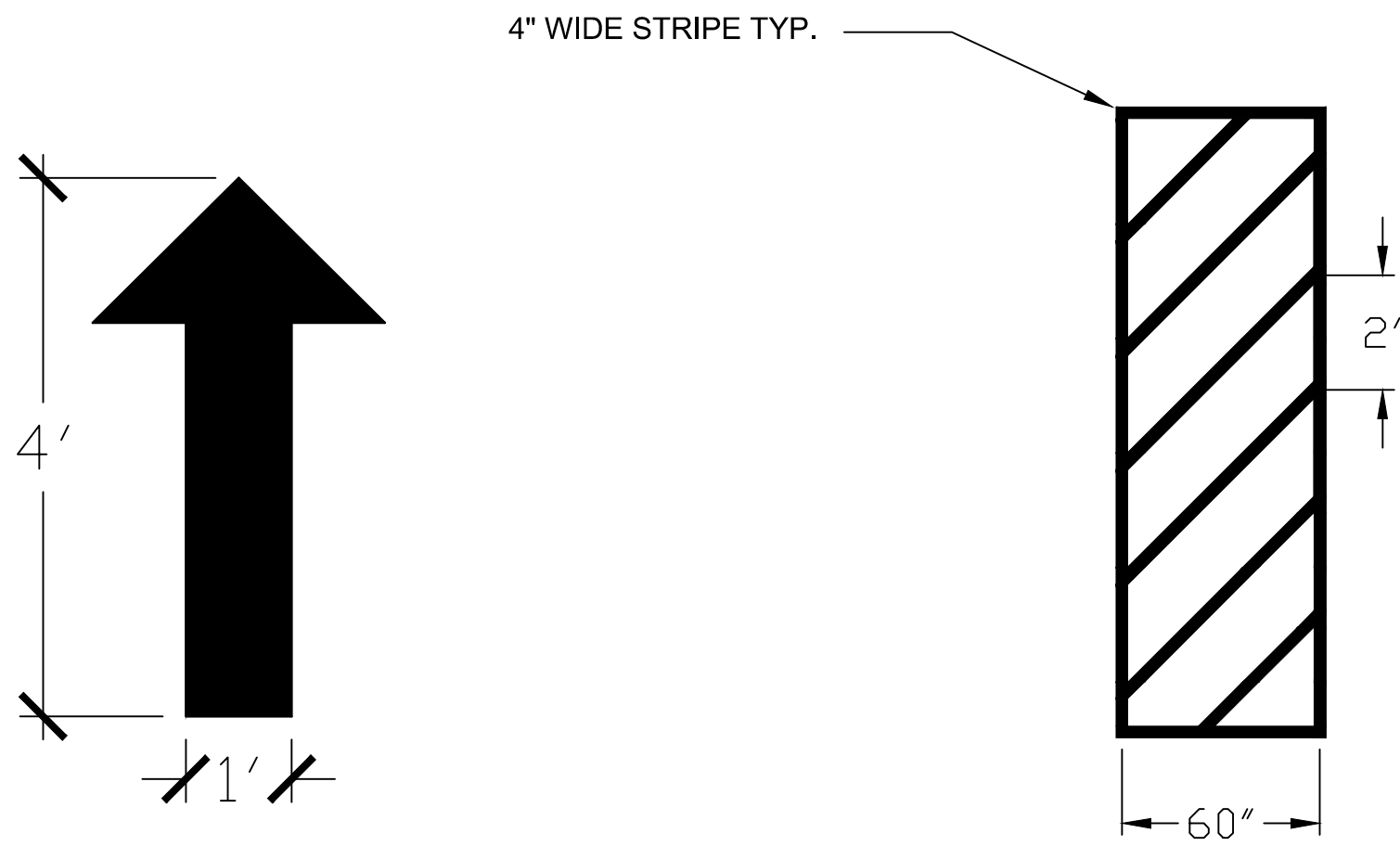
1. THE CONTRACTOR WILL PROVIDE ALL LABOR, MATERIALS, EQUIPMENT AND SUPERVISION NECESSARY FOR THE COMPLETION OF REPAIR ROADS, CATCH BASINS AND OTHER UNDERGROUND STRUCTURES AT THE VA-NIHCS MARION, IN CAMPUS.
2. THE CONTRACTOR WILL BE RESPONSIBLE TO VISIT THE SITE TO PERFORM ANY AND ALL REQUIRED MEASUREMENTS USED IN PREPARATION OF BIDDING DOCUMENTS. ALL DIMENSIONS ARE APPROXIMATE AND CATCH BASIN DEPTH'S VARY. ALL SITE VISITS MUST BE MADE BY APPOINTMENT WITH THE PROJECT ENGINEER.
3. WORK AREAS WILL BE ROPED OFF AROUND WORK SITES. ALL ENTRANCES SHALL REMAIN OPERATIONAL AT ALL TIMES UNLESS PRIOR PERMISSION HAS BEEN OBTAINED BY THE PROJECT ENGINEER. CONTRACTORS WILL BE RESPONSIBLE FOR BLOCKING OFF AREAS AS REQUIRED, FURNISHING THE NECESSARY BARRICADES, SIGNS, ETC... THIS WILL INCLUDE: ROAD CLOSED, DETOUR, TRUCK DELIVERY ROUTE AND ALL ROADWAY CONSTRUCTION SIGNAGE.
4. TOOLS AND EQUIPMENT WILL BE SECURED ANY TIME WORKERS ARE NOT IN THE IMMEDIATE AREA. THE WORK SITE WILL BE CLEANED UP AT THE CONCLUSION OF EACH DAYS WORK.
5. THE CONTRACTOR WILL FOLLOW ALL APPLICABLE VAMC REGULATIONS, OSHA STANDARDS AND INTERIM LIFE SAFETY MEASURES.
6. IT WILL BE THE CONTRACTORS RESPONSIBILITY TO LOCATE ALL SITE UTILITIES BEFORE DIGGING. IF ANY DAMAGE OCCURS, IT WILL BE REPAIRED AT THE CONTRACTORS OWN EXPENSE PER THE APPROVAL OF THE PROJECT ENGINEER.
7. THE CONTRACTOR WILL TAKE EVERY PRECAUTION TO PREVENT DAMAGING ADJACENT PAVING, SIDEWALKS, SOD, ETC... IF DAMAGE OCCURS IT WILL BE FIXED AT THE CONTRACTORS OWN EXPENSE PER THE APPROVAL OF THE PROJECT ENGINEER.
8. ALL DEBRIS WILL BECOME THE PROPERTY OF THE CONTRACTOR AND WILL BE DISPOSED OF OFF STATION IN A PROPER FASHION.
9. THE WORK PERFORMED IN THIS CONTRACT WILL BE CAREFULLY COORDINATED WITH THE PROJECT ENGINEER AND A WORK SCHEDULE WILL BE SUBMITTED BY THE CONTRACTOR FOR APPROVAL PRIOR TO THE START OF ANY WORK. DEMOLISHED AREAS WILL BE REPAIRED WITHIN SEVEN (7) WORKING DAYS OF THEIR REMOVAL. THE CONTRACTOR WILL BE RESPONSIBLE FOR A SCHEDULE ALLOWING A MINIMUM OF TEN (10) DAYS ADVANCE NOTICE OF THE PLANNED START OF WORK/CONSTRUCTION ACTIVITIES.
10. THE CONTRACTOR WILL BE ALLOWED TO WORK AFTER THE CLOSE OF REGULAR BUSINESS HOURS BY APPROVAL ONLY. THIS WILL BE SCHEDULED WITH THE PROJECT ENGINEER AND THE CONTRACTOR WILL REPORT IN AND OUT WITH THE VA POLICE WHEN WORKING AFTER HOURS. HOWEVER, NO CONCRETE OR ASPHALT WILL BE POURED OTHER THAN REGULAR BUSINESS HOURS.
11. THE CONTRACTOR WILL HAVE ON THE JOB AT ALL TIMES DURING THE PROGRESS A FOREMAN, SUPERINTENDENT OR OTHER COMPETENT REPRESENTATIVE TO WHOM ORDERS AND INSTRUCTIONS MAY BE GIVEN. HIS NAME IS TO BE CERTIFIED TO THE VA AND ANY ORDERS GIVEN TO SUCH REPRESENTATIVE WILL HAVE THE SAME FORCE AND EFFECT AS IF GIVEN DIRECTLY TO THE CONTRACTOR. A PHONE NUMBER WHERE A RESPONSIBLE PERSON CAN BE REACHED AFTER HOURS IN CASE OF PROBLEMS ETC... WILL BE PROVIDED ALSO.
12. CATCH BASIN'S WILL BE TOPPED WITH A HEAVY DUTY INLET FRAME "GRATE" (TYPE A, B OR C). THE FRAME WILL BE EQUAL TO NEENAH R-1772 OR EAST JORDAN 1022.
13. AREAS AROUND THE CATCH BASIN'S GRATE WILL BE REPLACED WITH 5½" THICK 4000 P.S.I. FIBERMESH CONCRETE W/ 4" SLUMP AND #5 REBAR 12" O.C. BOTH WAYS AND BE SLIGHTLY SLOPED INWARD WITH A MEDIUM BROOM FINISH. THE CONCRETE AREA WILL BE A MIN. OF 8'X8'.
14. NEW LINE STRIPPING WILL BE INSTALLED APPROXIMATELY AS SHOWN ON THE DRAWING. NEW POST AND SIGNS WILL ALSO BE INSTALLED TO MATCH EXISTING AND ADDITIONAL POST AND SIGNS WILL BE INSTALL TO MATCH EXISTING WHERE SPECIFIED ON DRAWING.
15. IT WILL BE THE CONTRACTORS RESPONSIBILITY TO PROVIDE EXACT MEASUREMENTS FOR THE LINE STRIPPING DETAIL. ALL STRIPES WILL BE STRAIGHT, CLEAN AND COLORED AS SHOWN IN LINE STRIPPING DETAIL. FOR ALL HANDICAP PARKING SPACES. ALL CROSSWALKS, STOPPING LINES, ARROWS, FIRE LANES, HANDICAP PARKING AND PARKING STRIPES WILL BE PAINTED WITH A REFLECTIVE PAINT. STOPPING LINES WILL BE PAINTED AT EVERY AREA WHERE A STOP SIGN IS PRESENT.
16. THE CONTRACTOR WILL PROVIDE NEW SIGNS. SIGNAGE WILL BE INSTALLED PLUMB AND LEVEL. POST WILL BE MOUNTED NO LESS THAN 24" BELOW GRADE AND SIGNAGE WILL BE MOUNTED NO LESS THAN 6' ABOVE GRADE. POST WILL BE 3" U CHANNEL BLACK POST MOUNTED IN CONCRETE. THE CONTRACTOR WILL REMOVE EXISTING SIGNS AND REPLACE WITH NEW. EXISTING SIGNS WILL REMAIN PROPERTY OF THE VAMC. THE CONTRACTOR WILL ALSO INSTALL NEW "NO TRUCK, MOTORCYCLE PARKING AND GOVERNMENT VEHICLE PARKING" SIGNS WHERE SPECIFIED ON DRAWING.
17. REPLACED SIDEWALKS WILL BE 5-1/2" THICK FIBERMESH CONCRETE WITH 6" OF COMPACTED #53 AGGREGATE SUB-BASE. THE CONCRETE WILL BE REINFORCED WITH # 4 REBAR 12" O.C. BOTH WAYS. NEWLY REPLACED SECTIONS WILL BE PINNED TO EXISTING SECTIONS WITH # 4 REBAR A MIN. OF 6" DEPTH BOTH WAYS AND ADHERED WITH EPOXY. EXPANSION JOINTS WILL ALSO BE INSTALLED BETWEEN NEW AND EXISTING SECTIONS. THE SURFACE WILL BE FINISHED WITH A MEDIUM BROOM FINISH.
18. IT WILL BE THE CONTRACTORS RESPONSIBILITY TO SURVEY ALL ELEVATIONS SO THAT THE PROPER DRAIN SLOPE AND CATCH BASIN DEBTS ARE OBTAINED.
19. BUILDING 172 PARKING LOT WILL BE DONE IN TWO PHASES SO THAT ADEQUATE PARKING WILL REMAIN FOR STAFF AND VISITORS.
20. A WORK SCHEDULE IS TO BE APPROVED BY THE PROJECT ENGINEER ALLOWING EACH SECTION OF WORK TO BE 100% COMPLETED BEFORE STARTING THE NEXT SECTION OF WORK. THIS IS TO ENSURE THAT THE VAMC CAN SCHEDULE PARKING ARRANGEMENTS FOR DAILY OPERATION.



PARKING BLOCK DETAIL:

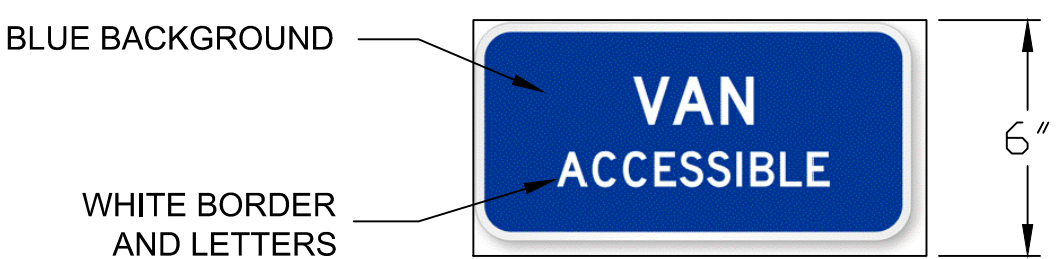
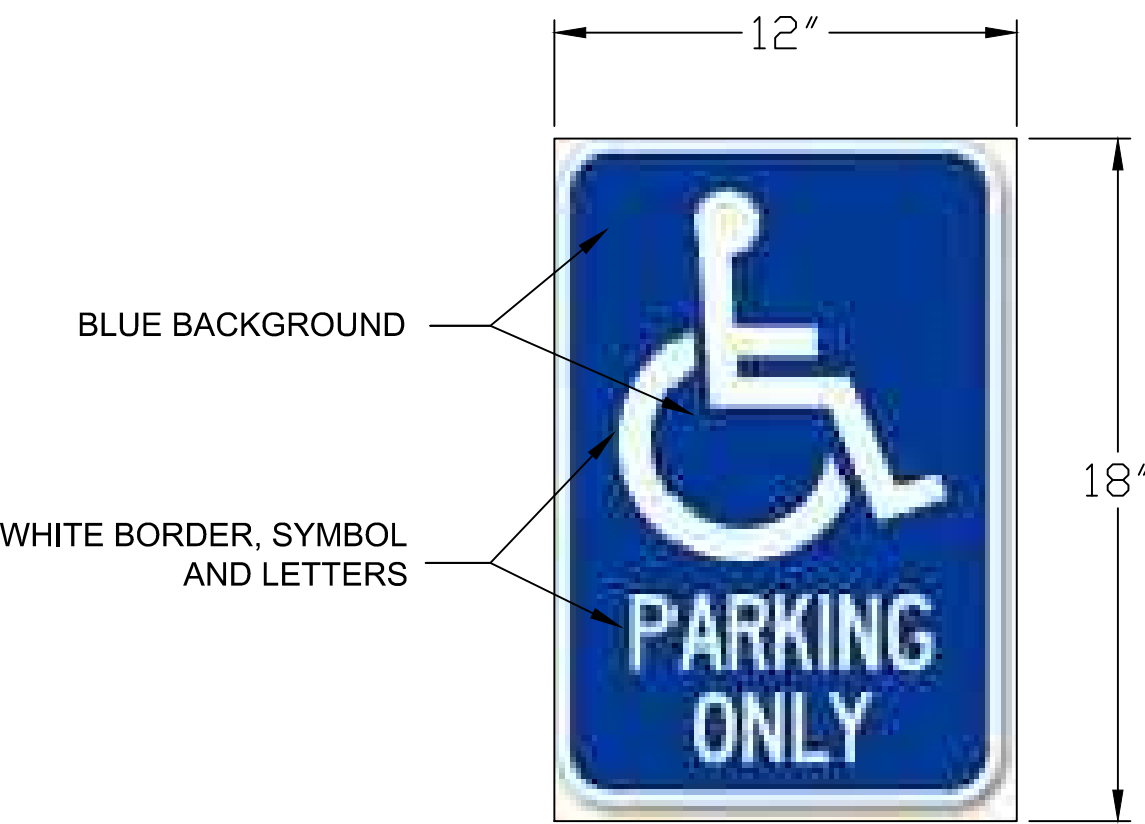
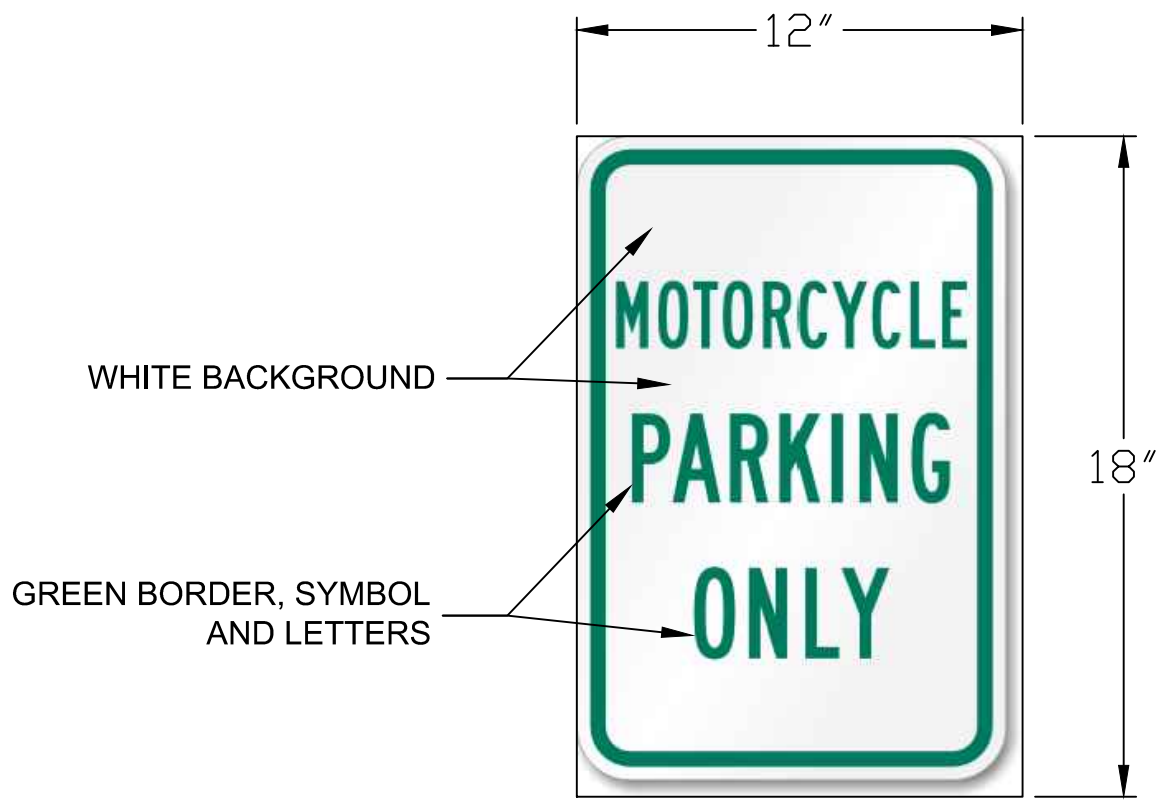
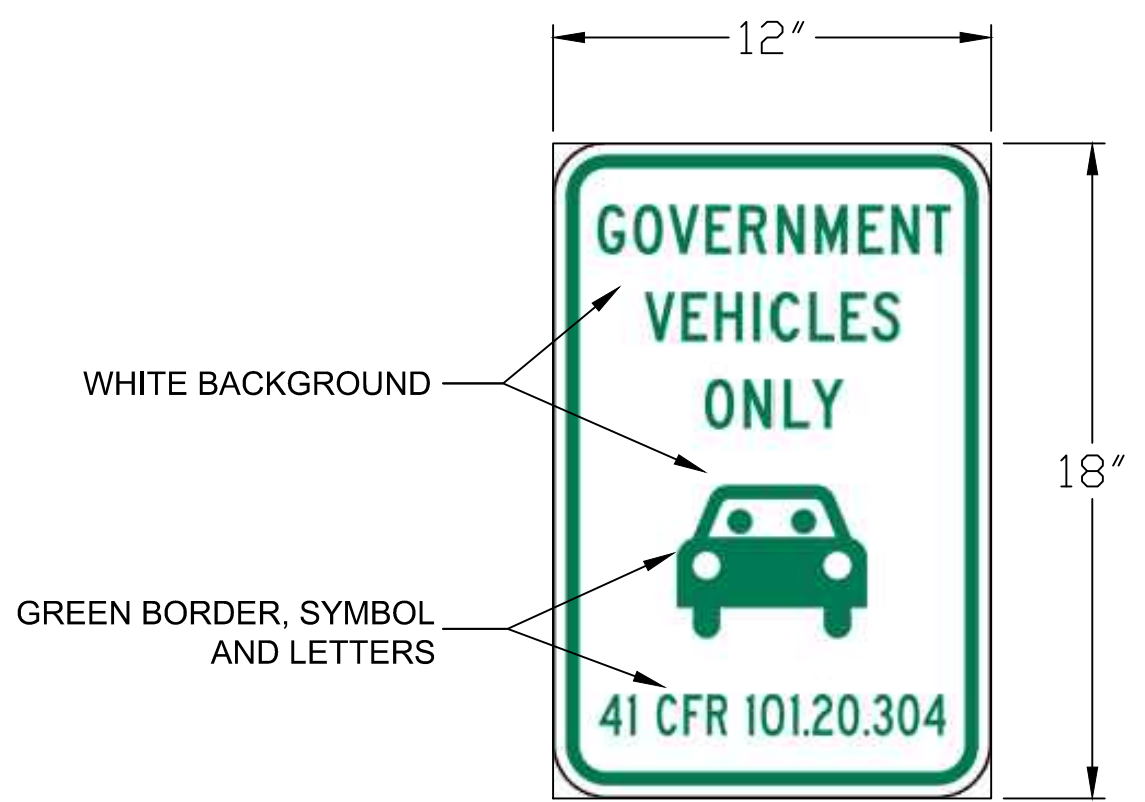
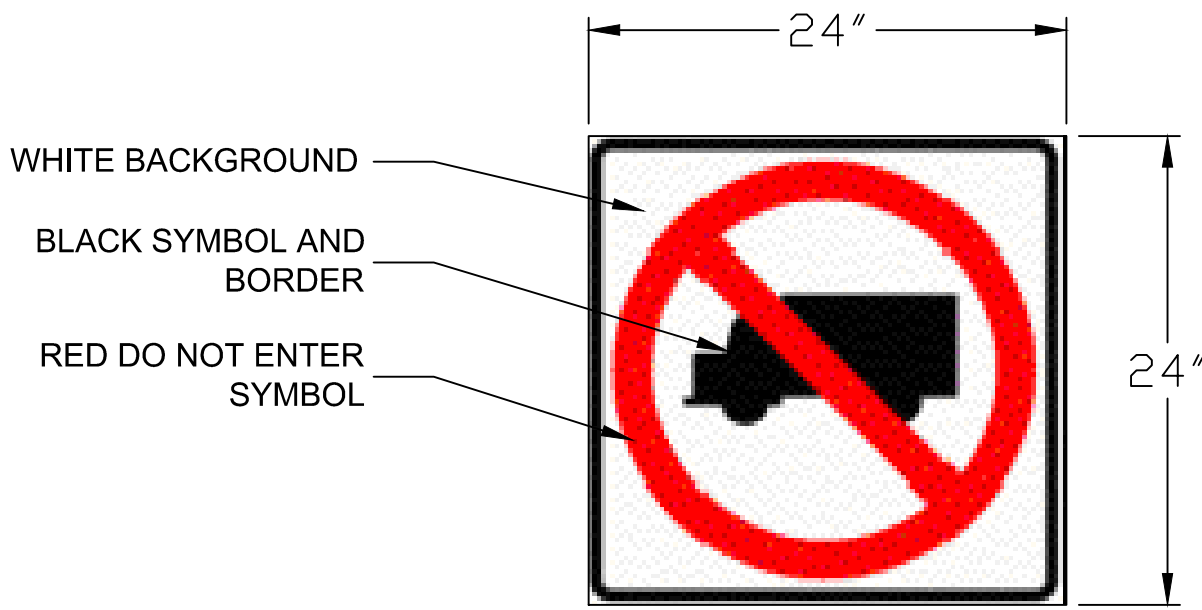


HANDICAP PARKING LINE STRIPPING DETAIL:



DIRECTIONAL ARROW STRIPPING DETAIL:

CROSSWALK LINE STRIPPING DETAIL:



SIGN DETAIL:

Approved: Medical Center Director
Mark Murdock

Approved: Medical Center Assoc. Director
Jay Miller

Approved: Engineering Department
Daniel A. Martin

Drawing Title

GENERAL NOTES
AND DETAILS

Approved: Project Director

Project Title

REPAIR ROADS, CATCH
BASINS AND OTHER
UNDERGROUND STRUCTURES

Location

MARION, IN

Date

11/25/2015

Checked

D. MARTIN

Drawn

Z. MCDANIEL

Project Number

610-11-114

Building Number

VARIOUS

Drawing Number

15-110M

Dwg. 2 of 12

