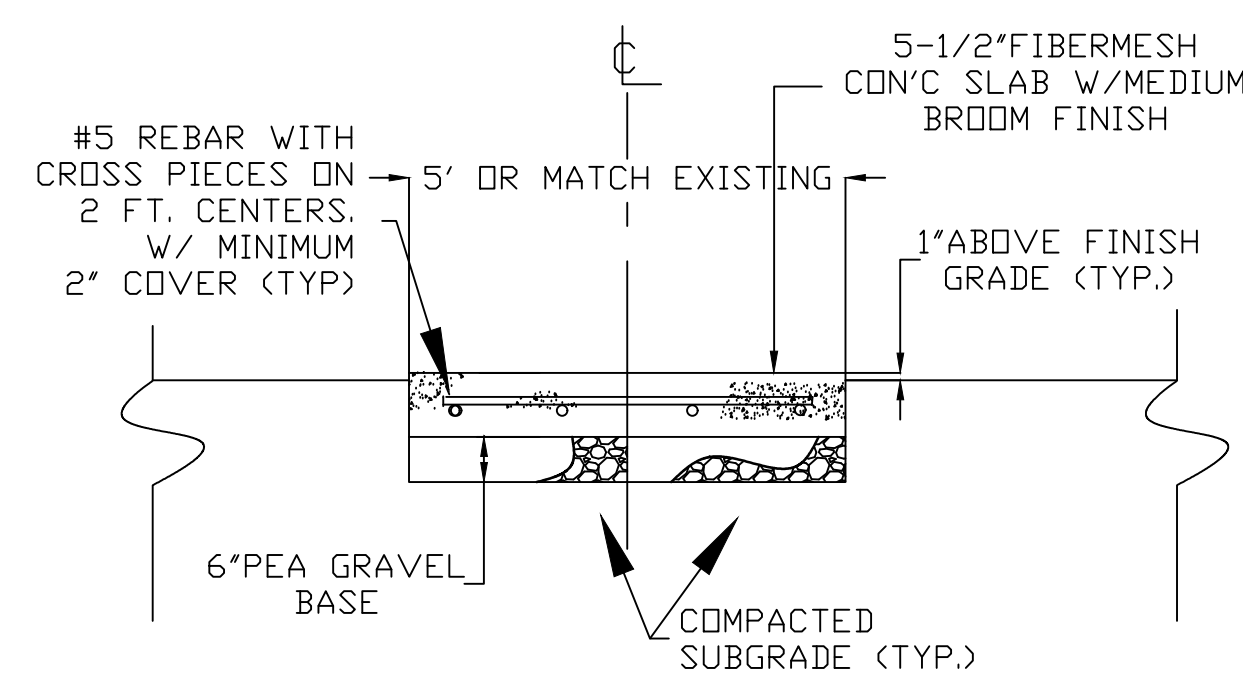
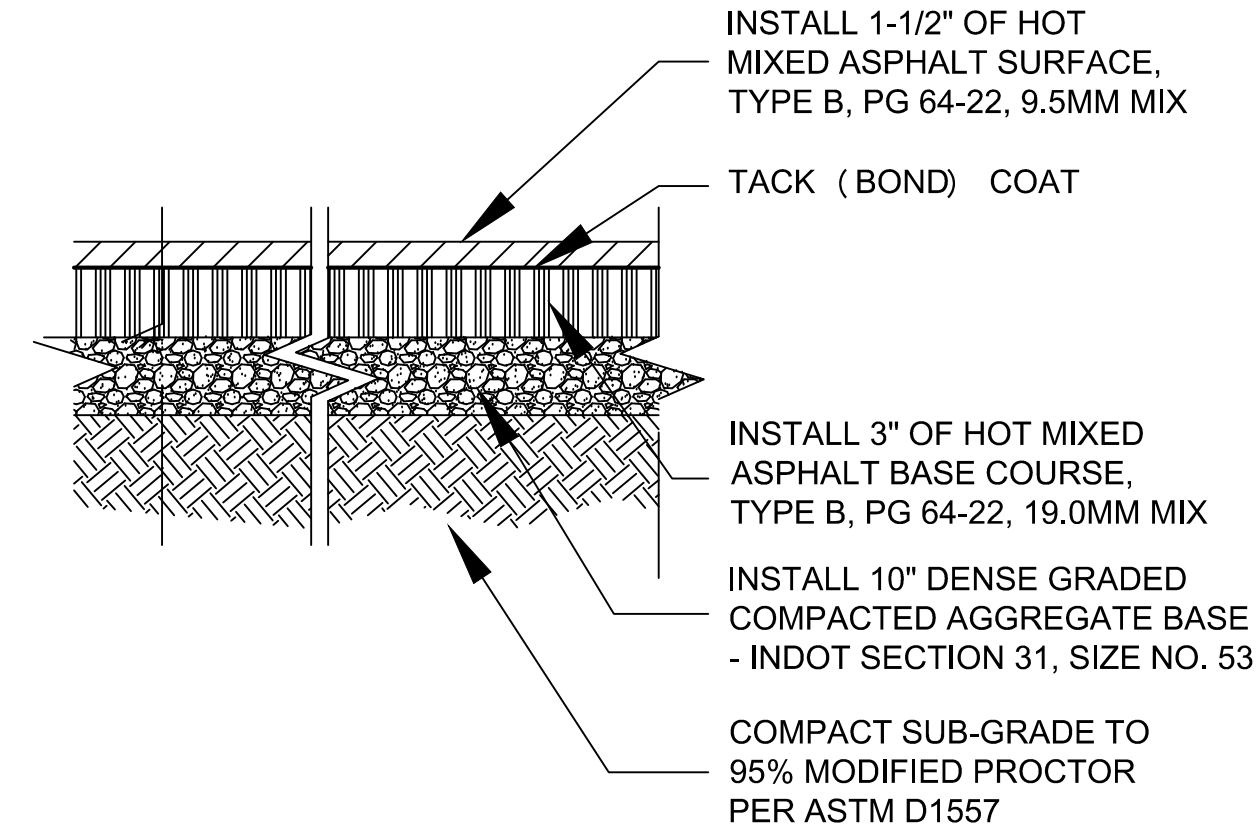


STANDARD VALVE BOX DETAIL:



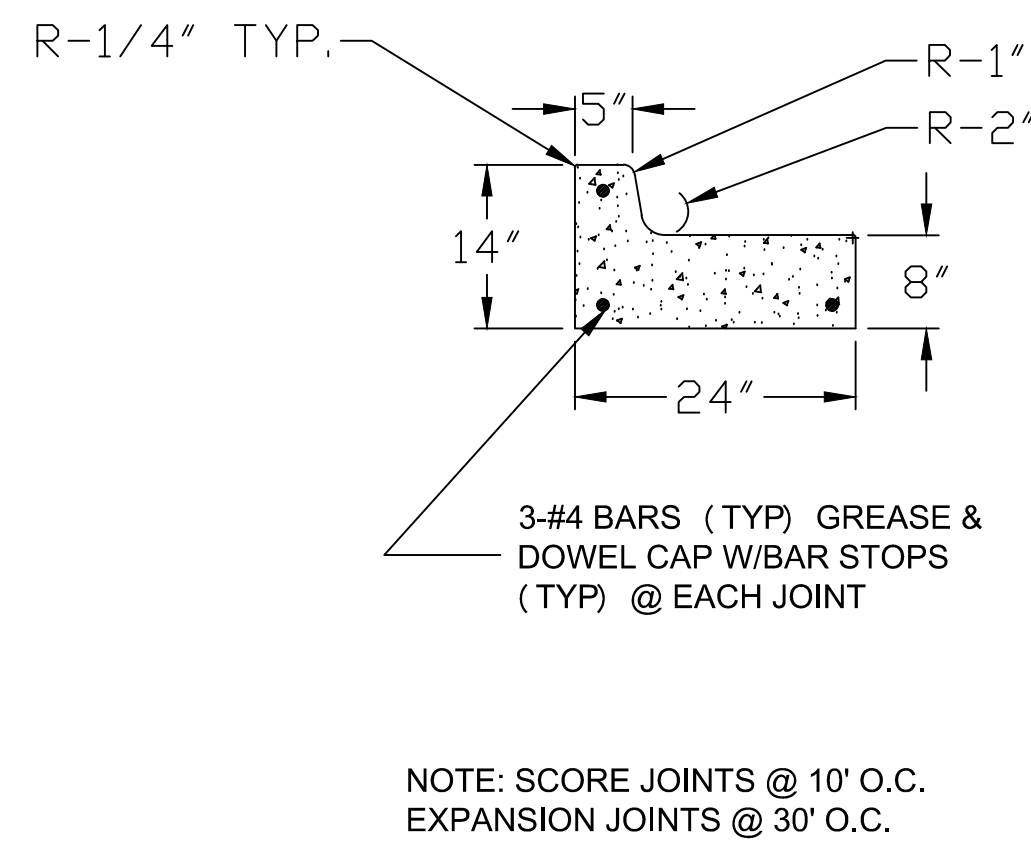
TYPICAL CONCRETE CONSTRUCTION DETAIL



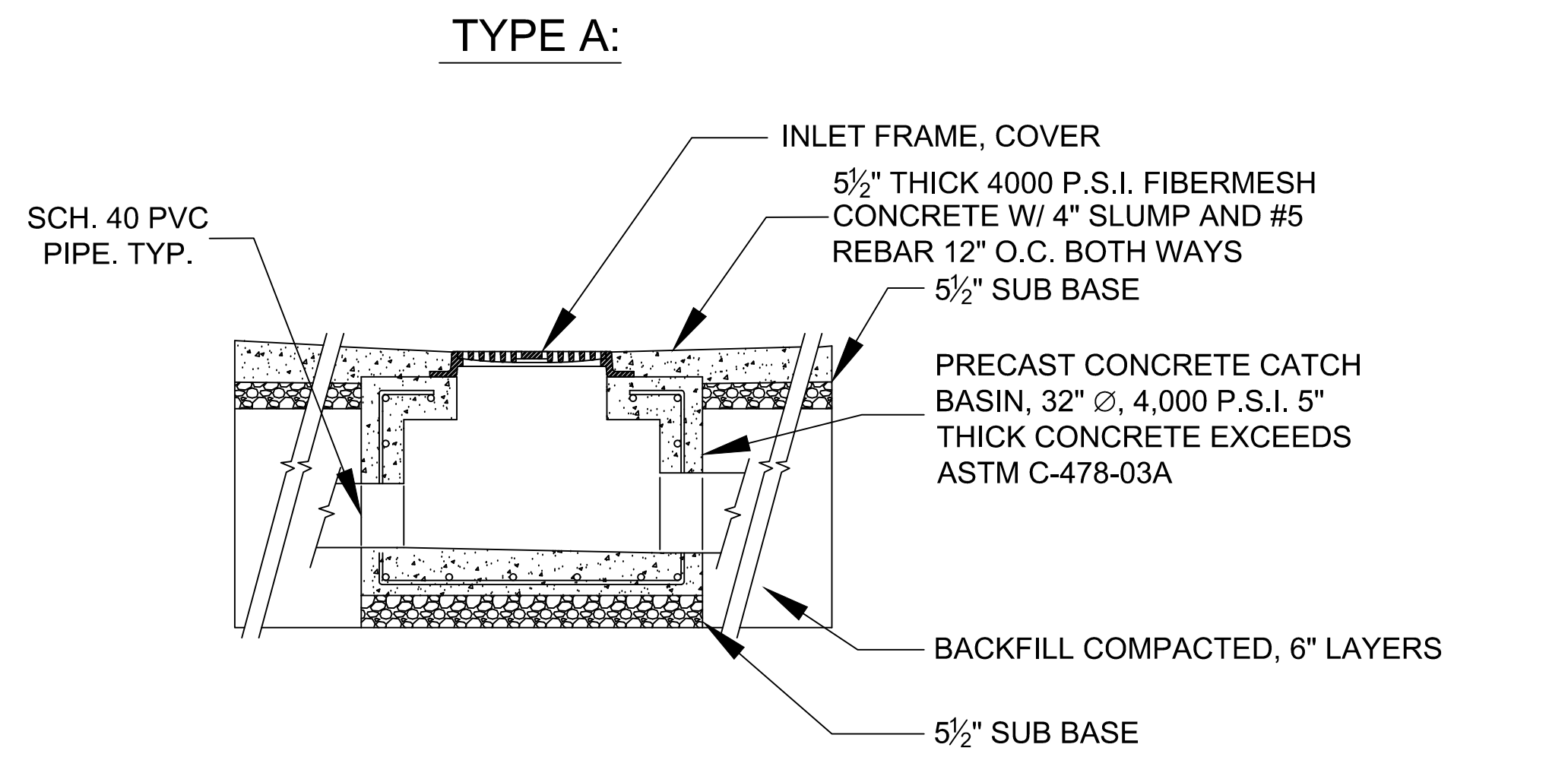
ASPHALT DETAIL

| CATCH BASIN / MAN HOLE DETAIL: | | | | |
|--------------------------------|------------------|------|---------------|------------|
| LOCATION NUMBER | CATCH BASIN TYPE | SIZE | APPROX. DEPTH | COVER TYPE |
| SS-1 | C | 32" | 6' | C |
| SS-2 | C | 48" | 6' | C |
| SS-3 | C | 48" | 6' | C |
| SS-4 | C | 48" | 6' | C |
| SS-5 | C | 48" | 7' | C |
| SS-6 | C | 48" | 7' | C |
| ST-1 | A | 32" | 2' | A |
| ST-2 | A | 32" | 2' | A |
| ST-3 | C | 48" | 8' | A |
| ST-4 | N/A | N/A | N/A | A |
| ST-5 | A | 32" | 2' | A |
| ST-6 | B | 24" | 3' | B |
| ST-7 | C | 48" | 7' | A |
| ST-8 | B | 32" | 2' | B |
| ST-9 | C | 48" | 7' | A |
| ST-10 | B | 32" | 2' | B |
| ST-11 | B | 32" | 2' | B |
| ST-12 | C | 48" | 10' | A |
| ST-13 | C | 48" | 10' | A |
| ST-14 | C | 48" | 10' | A |
| ST-15 | B | 32" | 4' | B |
| ST-16 | B | 32" | 4' | B |
| ST-17 | B | 32" | 2' | B |
| ST-18 | B | 32" | 2' | B |
| ST-19 | B | 32" | 2' | B |
| ST-20 | B | 32" | 2' | B |
| ST-21 | B | 32" | 2' | B |
| ST-22 | B | 32" | 2' | B |
| ST-23 | B | 32" | 2' | B |

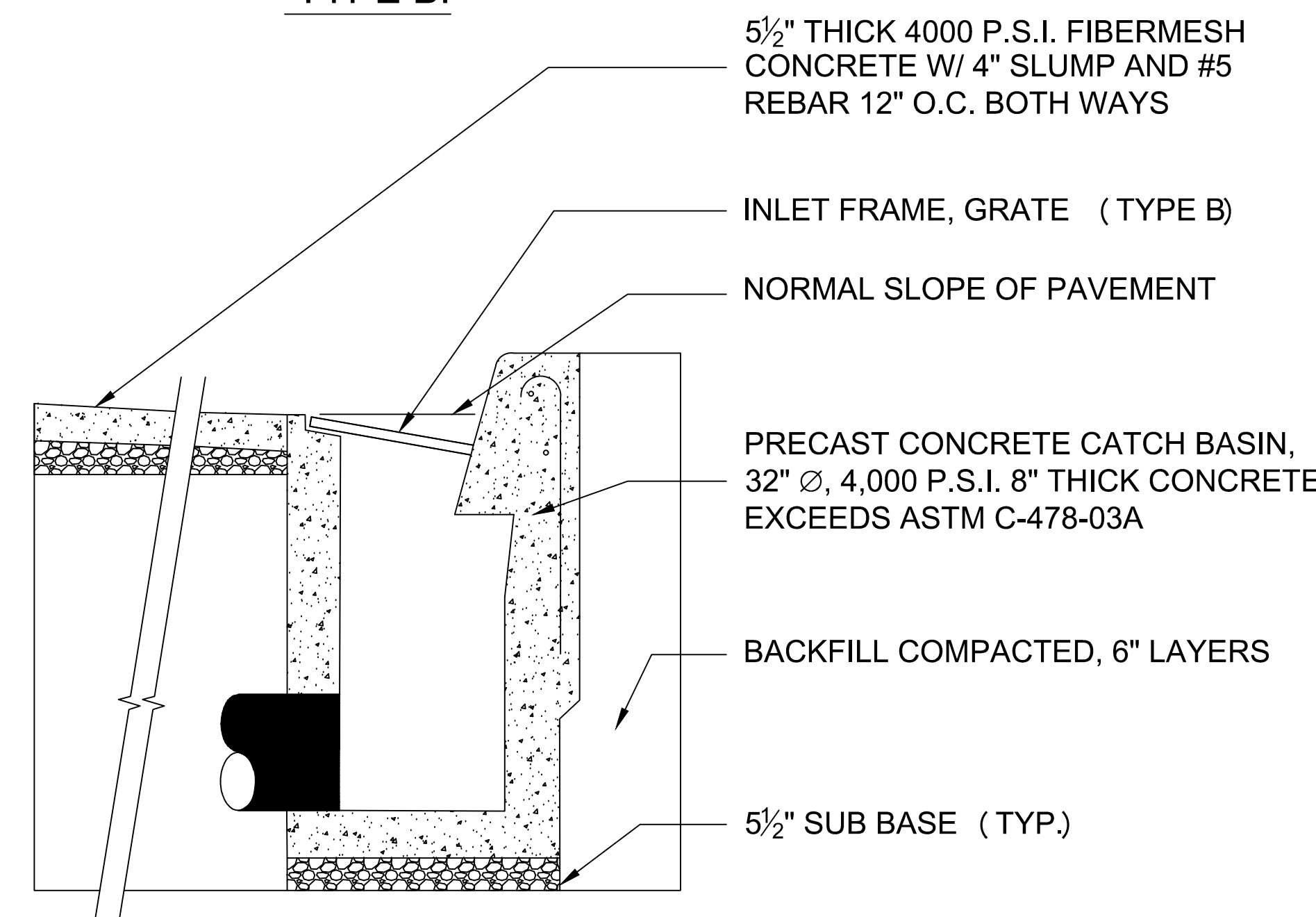
CATCH BASIN / MAN HOLE DETAIL:



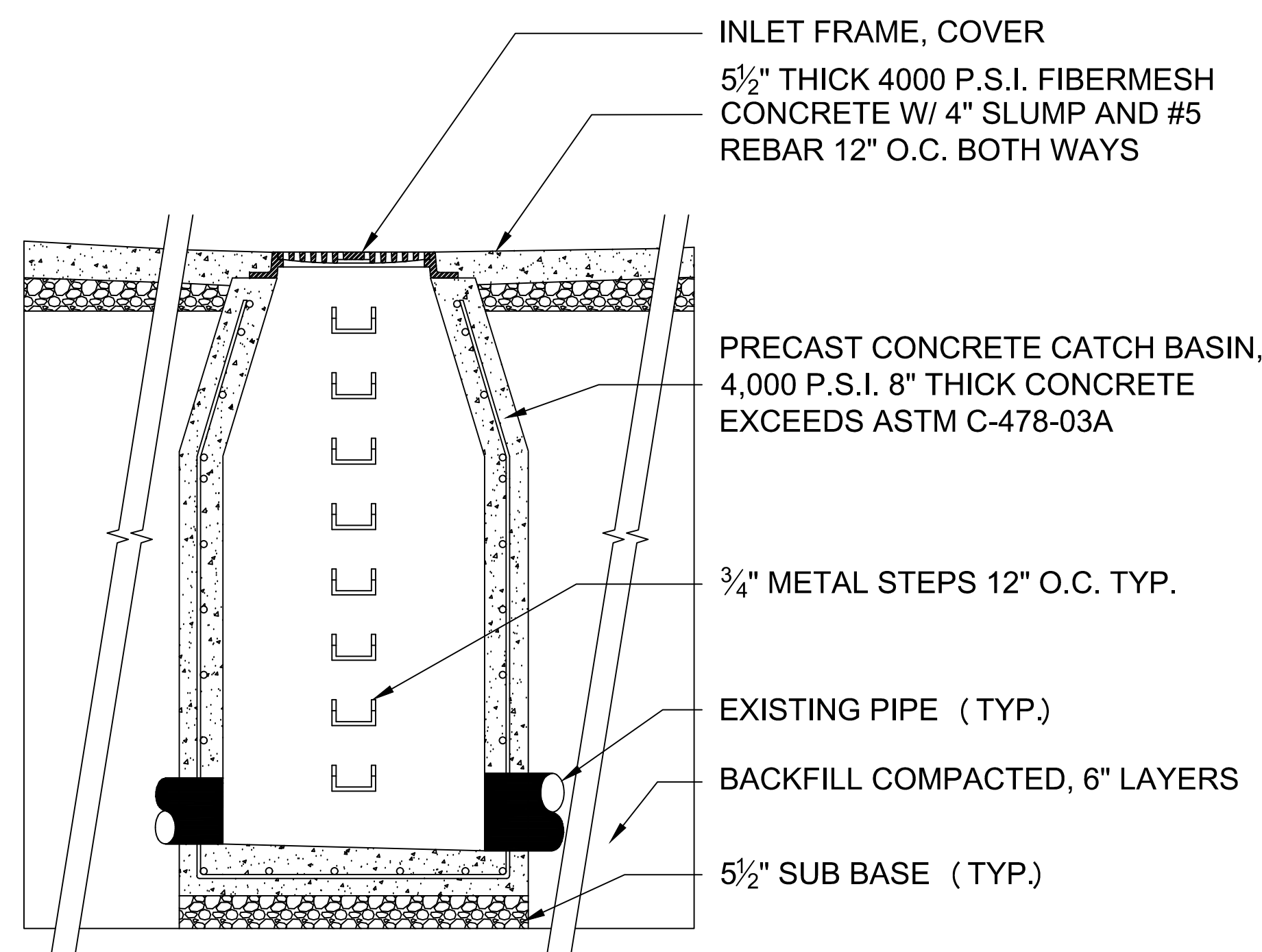
CONCRETE CURB AND GUTTER DETAIL:



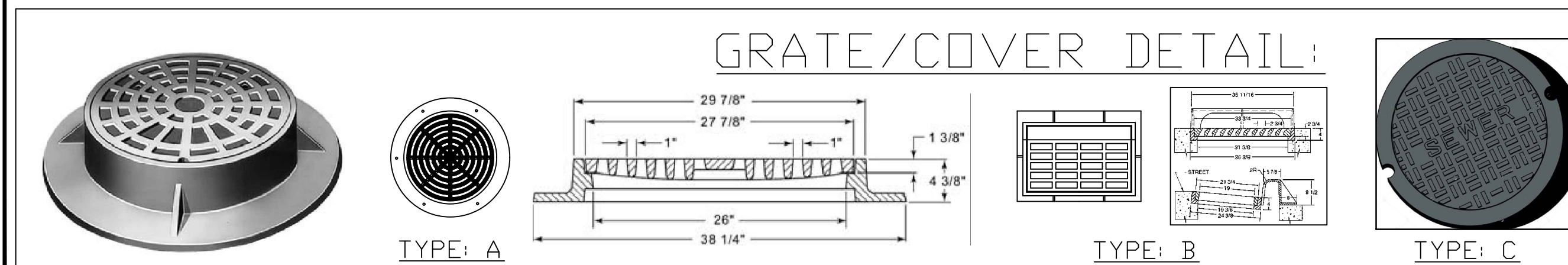
TYPE B:



TYPE C:



TYPICAL CATCH BASIN CONSTRUCTION DETAIL



GRATE/COVER DETAIL:

| | | | | | | |
|--|---|---|-----------------------------|-------------------------------------|----------------------------------|--|
| Approved: Medical Center Director Mark Murdock | Drawing Title GENERAL NOTES AND DETAILS | Project Title REPAIR ROADS, CATCH BASINS AND OTHER UNDERGROUND STRUCTURES | | Project Number 610-11-114 | | |
| Approved: Medical Center Assoc. Director Jay Miller | | Location MARION, IN | | Building Number VARIOUS | | |
| Approved: Engineering Department Daniel A. Martin | | Date 11/25/2015 | Checked D. MARTIN | Drawn Z. MCDANIEL | Drawing Number 15-110M | |
| | | | | Dwg. 3 of 12 | | |