

A

B

C

D

E

F

G

H

A

B

C

D

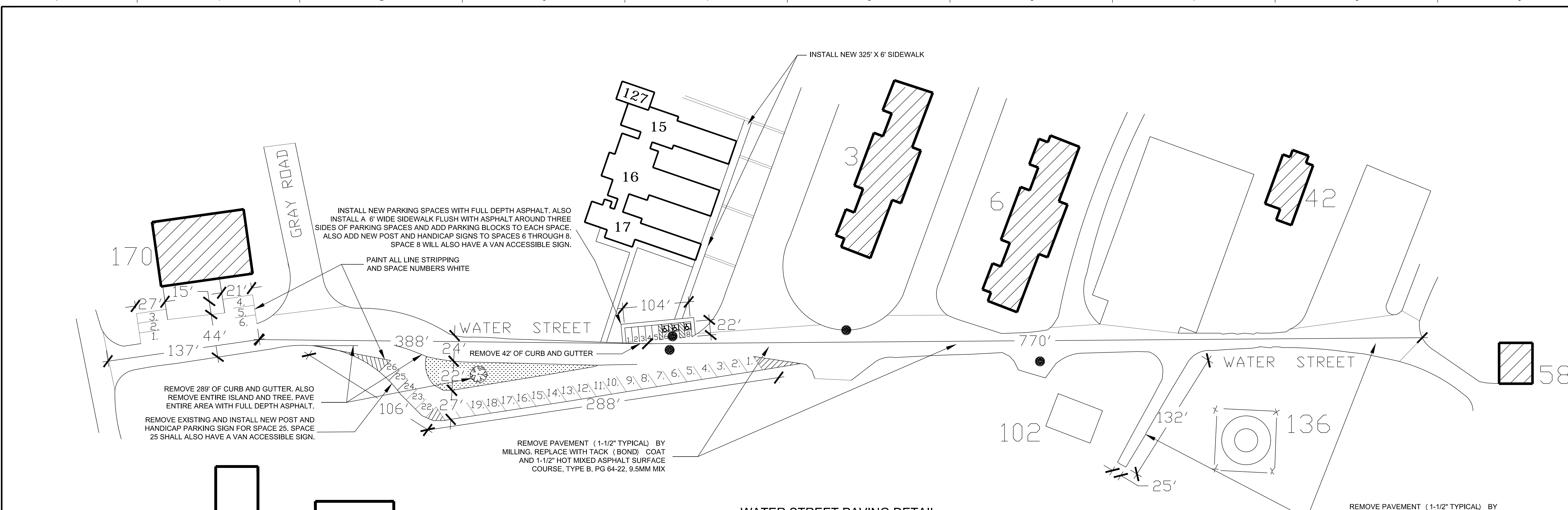
E

F

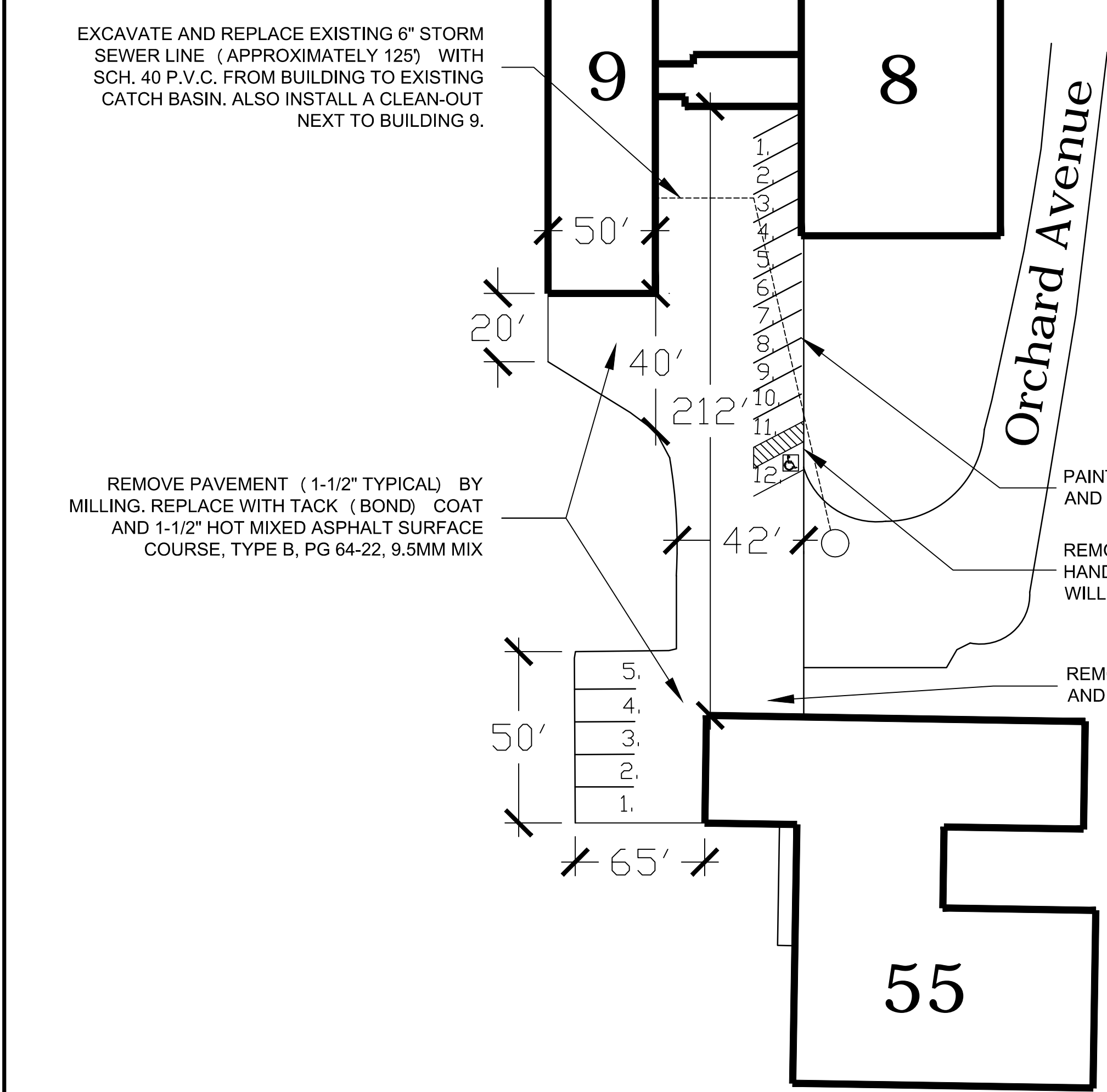
G

H

three inches = one foot
one and one half inches = one foot
one inch = one foot
three quarters inch = one foot
one half inch = one foot
three eighths inch = one foot
one quarter inch = one foot
one eighth inch = one foot
one sixteenth inch = one foot

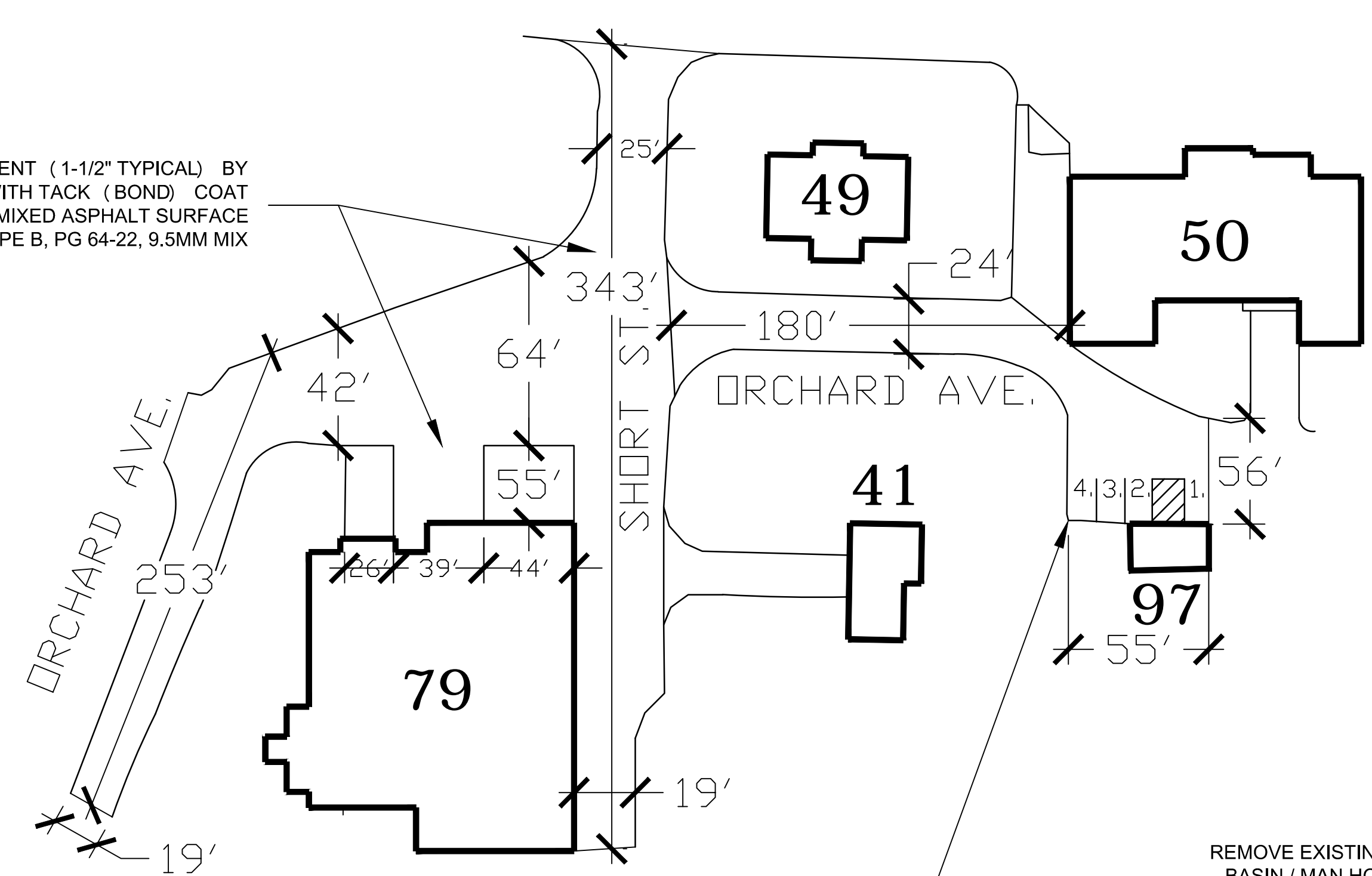


WATER STREET PAVING DETAIL:



BUILDING 8 PAVING DETAIL:

REMOVE PAVEMENT (1-1/2" TYPICAL) BY MILLING. REPLACE WITH TACK (BOND) COAT AND 1-1/2" HOT MIXED ASPHALT SURFACE COURSE, TYPE B, PG 64-22, 9.5MM MIX

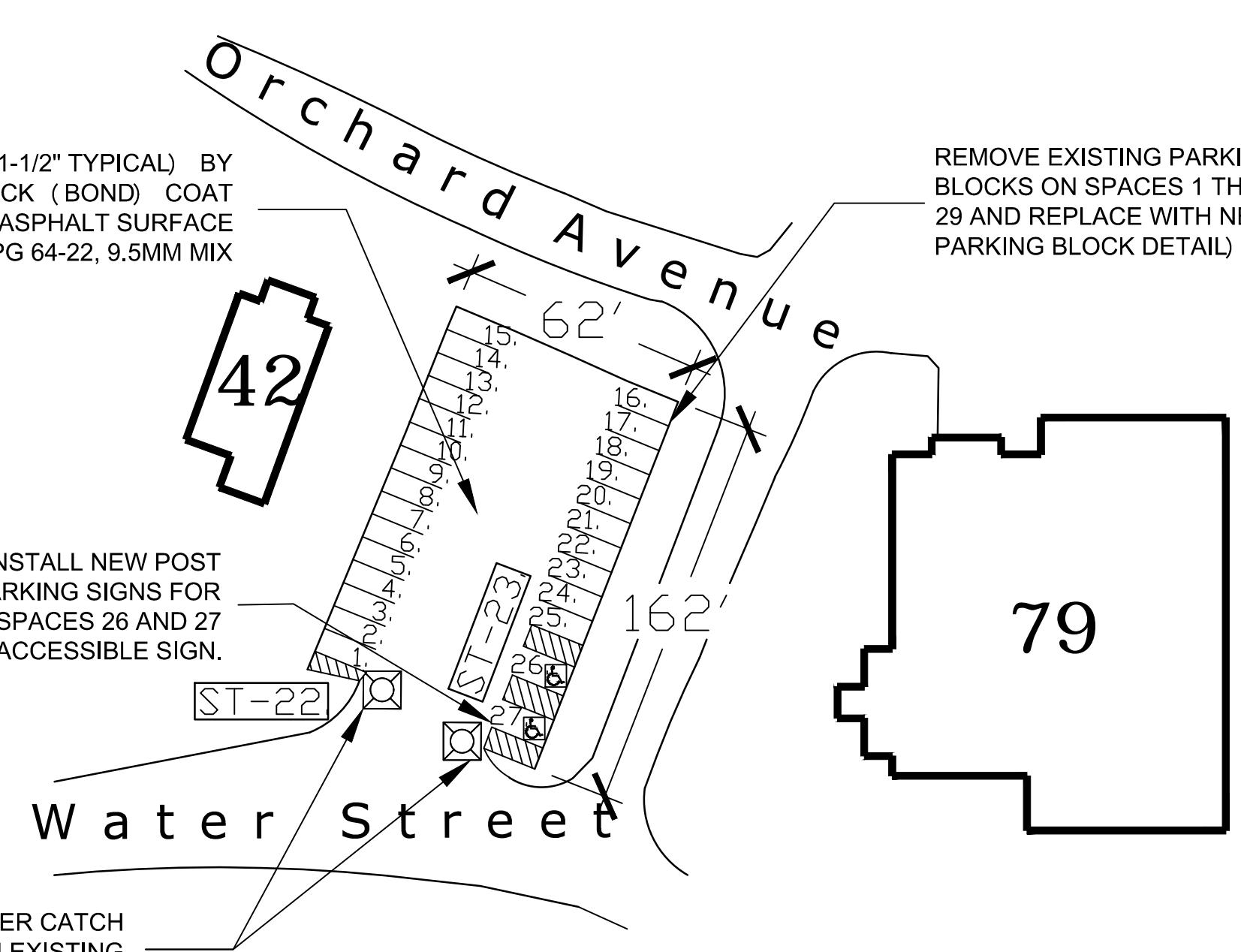


ORCHARD AVE. AND SHORT ST. PAVING DETAIL:

REMOVE PAVEMENT (1-1/2" TYPICAL) BY MILLING. REPLACE WITH TACK (BOND) COAT AND 1-1/2" HOT MIXED ASPHALT SURFACE COURSE, TYPE B, PG 64-22, 9.5MM MIX

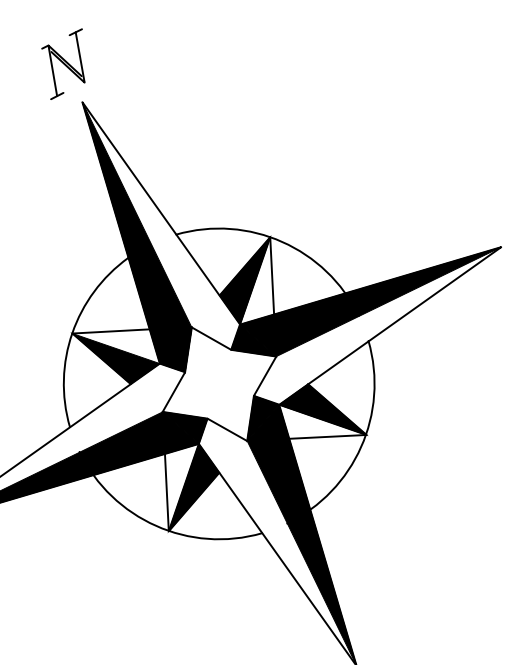
REMOVE EXISTING AND INSTALL NEW POST AND HANDICAP PARKING SIGNS FOR SPACES 26 AND 27. SPACES 26 AND 27 SHALL ALSO HAVE A VAN ACCESSIBLE SIGN.

REMOVE EXISTING AND REPLACE STORM SEWER CATCH BASIN / MAN HOLE'S ST-22 AND ST-23. MATCH EXISTING PIPE SIZE'S. (SEE CATCH BASIN / MAN HOLE SCHEDULE)



BUILDING 79 PARKING LOT PAVING DETAIL:

= VALVE BOX REPLACEMENT LOCATION
 = CATCH BASIN LOCATION



Approved: Medical Center Director Mark Murdock	Drawing Title WATER STREET, BUILDING 8, B-79 PARKING, ORCHARD AVE. AND SHORT ST. PAVING DETAIL	Project Title REPAIR ROADS, CATCH BASINS AND OTHER UNDERGROUND STRUCTURES	Project Number 610-11-114
Approved: Medical Center Assoc. Director Jay Miller	Approved: Project Director	Location MARION, IN	Building Number VARIOUS
Approved: Engineering Department Daniel A. Martin	Date 11/25/2015	Checked D. MARTIN	Drawing Number 15-110M
		Drawn Z. MCDANIEL	Dwg. 11 of 12