

## DEMOLITION NOTES

REMOVE ALL OBSOLETE ELECTRICAL EQUIPMENT, FIXTURES, CONDUIT, WIRING, CONTROLS, HANGERS, PADS, AND SUPPORTS UNLESS OTHERWISE INDICATED TO REMAIN. DISCONNECT CIRCUIT AND WIRING FROM EQUIPMENT WHICH IS TO BE REMOVED BY OTHERS. WIRING MADE OBSOLETE BY THE NEW CONSTRUCTION SHALL BE REMOVED. CONDUIT MADE OBSOLETE BY THE NEW CONSTRUCTION SHALL BE REMOVED OR SECURELY SEALED AND CAPPED ABOVE CEILINGS, BELOW FLOORS, GRADE OR IN WALLS SO THAT IT IS COMPLETELY CONCEALED AT THE COMPLETION OF THE PROJECT. PIPING AND WIRING REMOVED FROM THE EXISTING ELECTRICAL SYSTEMS SHALL NOT BE USED IN THE INSTALLATION OF THE NEW SYSTEMS.

DEMOLITION INCLUDES, BUT IS NOT LIMITED TO, REMOVAL AND LEGAL DISPOSAL OF EQUIPMENT AND SYSTEMS MADE OBSOLETE AND/OR REPLACED BY NEW WORK. DEMOLITION INCLUDES RELOCATION OR REINSTALLATION, DISCONNECTIONS AND RECONNECTIONS OF SERVICES, SUPPORTS, AND SUBSEQUENT FINAL SUPPORTS, TEMPORARY CAPPING, AND REROUTING OF TEMPORARY SERVICES TO PERMIT NEW OR RENOVATION WORK TO PROCEED.

THE DEMOLITION WORK INDICATED ON THE DRAWING IS INTENDED TO ASSIST THE CONTRACTOR AND GIVE GENERAL INFORMATION. NOT ALL DEMOLITION OR TEMPORARY CONNECTIONS ARE SHOWN. PRIOR TO SUBMITTING BID, THE CONTRACTOR SHALL VISIT THE PROJECT SITE AND REVIEW ORIGINAL DRAWINGS IF AVAILABLE. CONTRACTOR IS RESPONSIBLE TO DETERMINE THE FULL EXTENT OF DEMOLITION, AND INCLUDE ALL REQUIRED DEMOLITION WORK IN HIS BID, WHETHER OR NOT SPECIFICALLY SHOWN ON DRAWINGS. NO ADDITIONAL COST WILL BE GRANTED FOR DEMOLITION. LEGALLY DISPOSE OF ALL ITEMS AND MATERIALS, EXCEPT ANY ITEMS SPECIFICALLY DESIGNATED BY THE OWNER TO BE SALVAGED. REMOVE AND REPLACE THE DESIGNATED SALVAGED EQUIPMENT IN A LOCATION DIRECTED BY THE OWNER AT NO ADDITIONAL EXPENSE.

REFER TO GENERAL CONSTRUCTION TRADE DEMOLITION DRAWINGS AS WELL AS THE CIVIL DRAWINGS FOR DEVICES AND EQUIPMENT THAT HAVE TO BE REMOVED DUE TO THE NEW CONSTRUCTION AND RENOVATIONS AND EXTENT OF AREA TO BE DEMOLISHED. DISCONNECT POWER AND CONTROLS SERVING SUCH DEVICES AND EQUIPMENT WHETHER OR NOT SPECIFICALLY SHOWN ON ELECTRICAL DRAWINGS TO FACILITATE DEMOLITION AND NEW CONSTRUCTION.

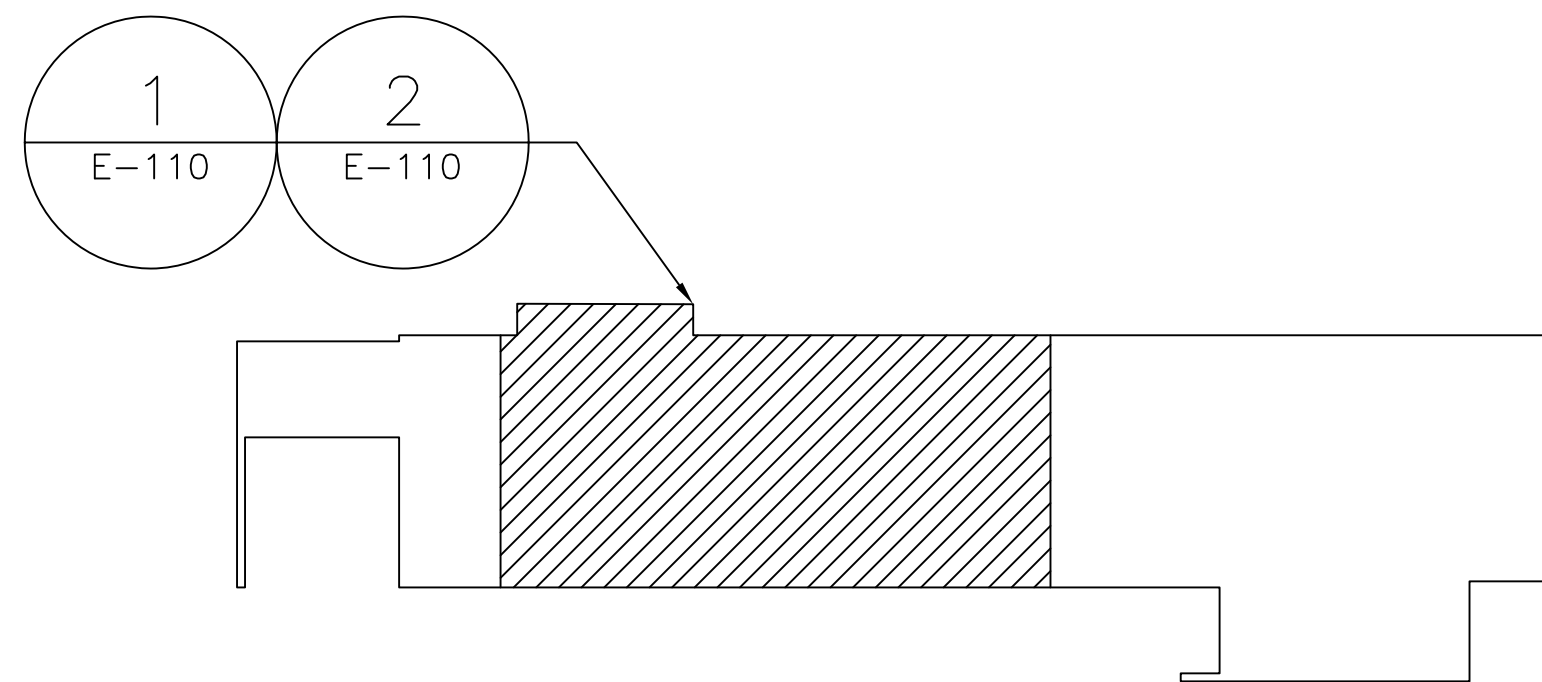
MAINTAIN CONTINUITY OF EXISTING CIRCUITS FOR EQUIPMENT AND DEVICES TO REMAIN. IF A DEVICE OR EQUIPMENT IS REMOVED AND IS PART OF AN EXISTING CIRCUIT TO REMAIN, THE CIRCUIT SHALL BE RESTORED TO IT'S ORIGINAL CONDITION.

## POWER

208/120V BRANCH CIRCUIT PANELBOARD

## KEYED CONSTRUCTION NOTES:

- PROVIDE 60 AMP LIGHTING CONTACTOR WITH 120V COIL FOR EXISTING PARKING LOT LIGHTING.
- PROVIDE 60 AMP LIGHTING CONTACTOR WITH 120V COIL FOR EXISTING STREET LIGHTING.



BUILDING 10  
KEY PLAN  
SCALE: NO SCALE



Consultant  
**ONEI**  
NORTHEAST INFRASTRUCTURE, LLC  
630 PARK STREET, HONESDALE, PA 18431  
570-253-0846 OFFICE 570-253-1935 FAX  
WWW.NEINFRA.COM

Drawing Scale  
AS NOTED

Drawing Title  
BUILDING 10 EXISTING  
AND NEW WORK  
ELECTRICAL PLANS

## CONSTRUCTION DOCUMENTS

Project Title  
PARKING LOT 7 EXPANSION

Building No.  
LOT 7  
Checked  
CJC  
Drawn  
TAD  
Location  
CANANDAIGUA, NEW YORK

Date  
06/23/2016

Project No.  
528A5-16-505

E-110  
Page 19 of 20

V.A.