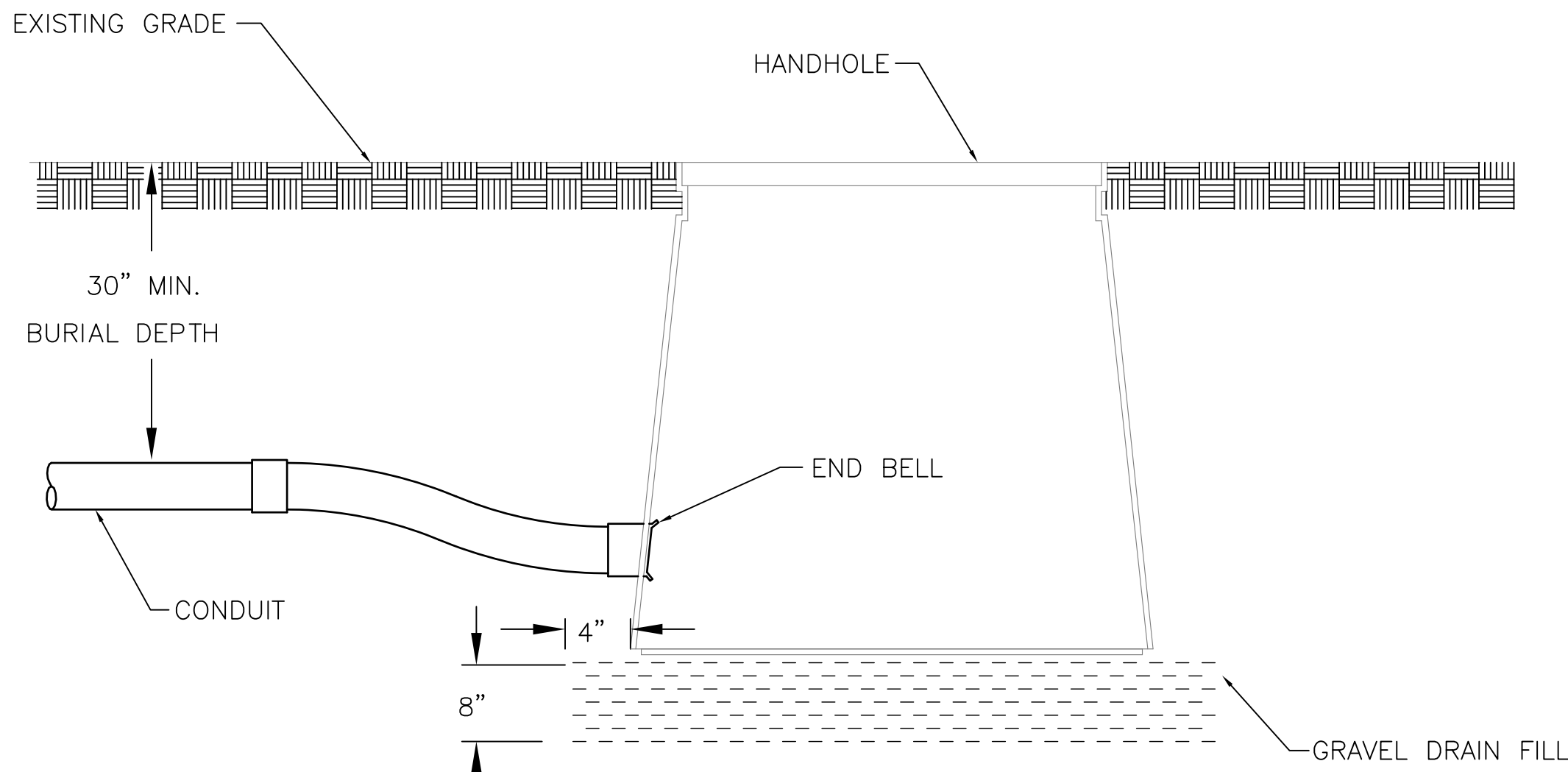
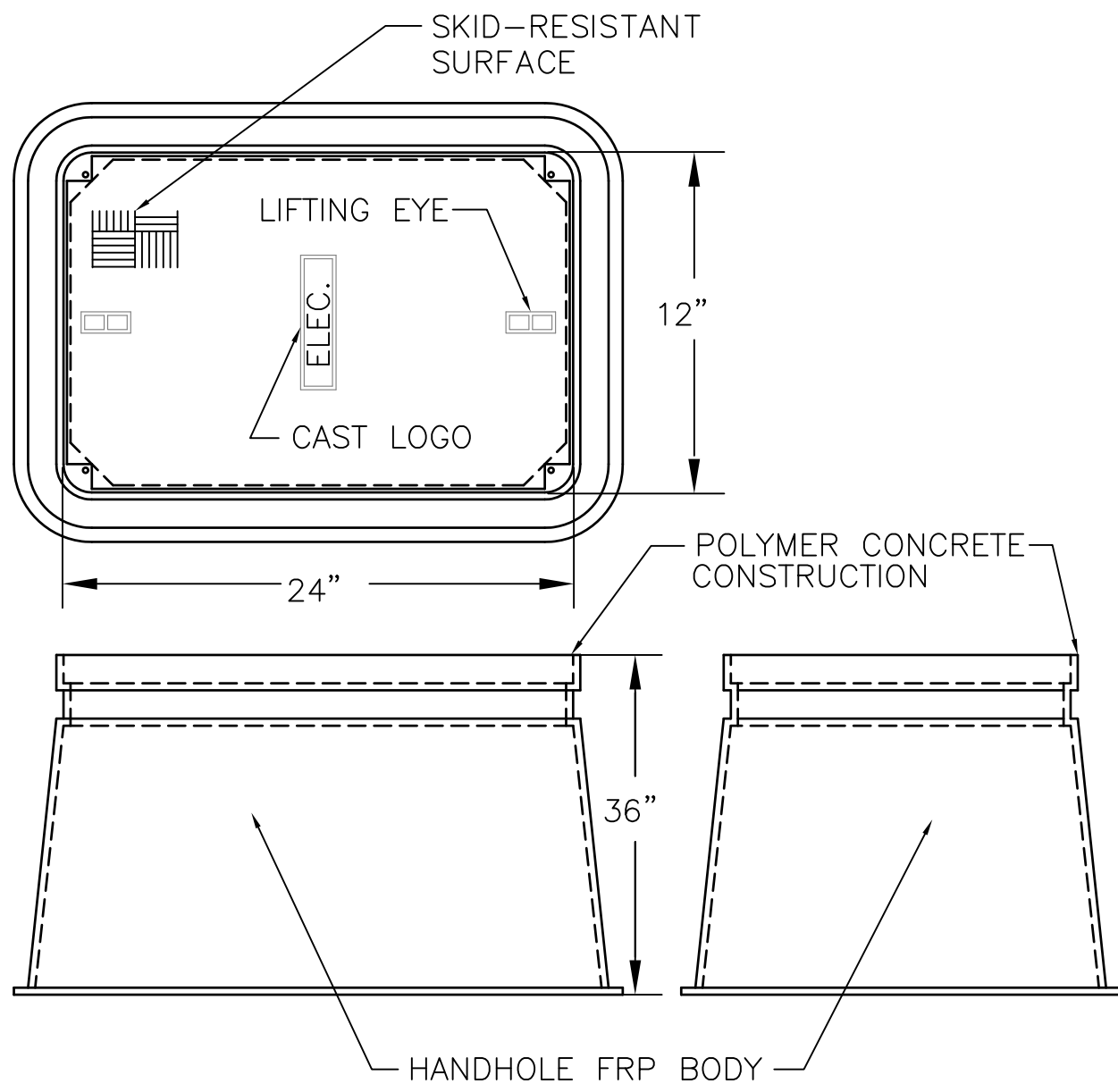


LEGEND

- — — — — EXISTING GRANITE CURB  
— — — — — PROPOSED GRANITE CURB  
— — — — — EXISTING GAS LINE/GAS VALVE  
— — — — — EXISTING FIRE HYDRANT  
— — — — — EXISTING WATER LINE/VALVE  
— — — — — EXISTING SANITARY LINE/  
SANITARY MANHOLE  
— — — — — EXISTING STORM LINE/STORM INLET  
— — — — — EXISTING OVERHEAD ELECTRIC  
TELEPHONE/CABLE UTILITY POLE  
— — — — — EXISTING UNDERGROUND ELECTRIC/  
LIGHT POLE  
— — — — — PROPOSED UNDERGROUND ELECTRIC/  
LIGHT POLE  
— — — — — PROPOSED STORM LINE/STORM INLET  
— — — — — PROPERTY LINE  
— — — — — PROPOSED PAVEMENT MARKING  
— — — — — PROPOSED SIGN  
— — — — — PROPOSED BITUMINOUS PAVEMENT  
— — — — — PROPOSED CONCRETE WALK  
— — — — — PROPOSED LANDSCAPE RESTORATION  
— — — — — PROPOSED CHAINLINK FENCE  
— — — — — PROPOSED GUIDERAIL

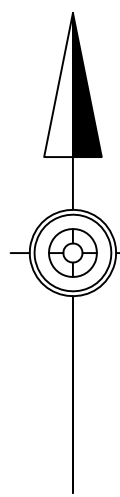


2 TYPICAL HANDHOLE CONDUIT ENTRY/EXIT  
E-100 SCALE: N.T.S.

1 SITE ELECTRICAL PLAN  
E-100 SCALE: 1"=25'-0"

RELOCATED  
LIGHT POLE  
(SEE NOTE 4)

PARK LOT



LIGHTING FIXTURE SCHEDULE											
FIXTURE TYPE	DESCRIPTION	BASIC OF DESIGN	ORDERING INFORMATION	WATTS	VOLTAGE	LAMPS	DRIVER	LAMP COLOR TEMPERATURE	FINISH COLOR OPTION	NOTES / REMARKS	
B1	OUTDOOR-WEATHERTIGHT LED FLOOD LUMINAIRE	CREE	ARE-EDG-4M-AA-20-E-UL-BZ-350-43K TWIN WITH ARM MOUNT	220W EACH	UNIVERSAL 120-277V	LED COUNT 200	350mA	4,300K	BRONZE	1, 3, 4	
C	OUTDOOR-WEATHERTIGHT POST TOP LED LUMINAIRE	STERNBERG LIGHTING	XRLED-A850-12L45T4-MDL21	96W	UNIVERSAL 120-277V	LEDS - 12	2100mA	4,500K	MATCH EXISTING	2.	

NOTES:

1. TYPE IV MEDIUM OPTIC, ADJUSTABLE ARM, 200 LED, AND SERIES E. QUANTITY 2 PER POLE

2. MOUNTING HEIGHT IS 12'.

3. PROVIDE WITH IN-LINE 2 AT 180° CONFIGURATION, CREE PB-2A

4. FIXTURE TO BE MOUNTED 20' ABOVE GRADE. PROVIDE ENERGY LIGHT INC. LIGHTING POLE - #20A5RT188.

ABBREVIATIONS

AMP./A.	AMPERE	HT.	HEIGHT
AC.	ALTERNATING CURRENT	HORIZ.	HORIZONTAL
A.I.C.	AMPERES INTERRUPTING CAPACITY	HP.	HORSEPOWER
		HZ.	HERTZ
		INSUL.	INSULATION/INSULATED
BLDG.	BUILDING	JB	JUNCTION BOX
BKR.	BREAKER	KW	KILOWATT
BSMT.	BASEMENT	KWH	KILOWATT HOUR
		KVA	KILOVOLT-AMPERE
		KV	KILOVOLT
.C.	CENTIGRADE DEGREES		
CKT.	CIRCUIT		
CB	CIRCUIT BREAKER		
CONC.	CONCRETE	LG.	LENGTH
C.	CONDUIT	LF	LINEAR FEET
CONDR.	CONDUCTOR	LT	LIGHT
CONTR.	CONTRACTOR	LTG	LIGHTING
CU.	COPPER	LG	LONG
CONST.	CONSTRUCTION		
COORD.	COORDINATE	M/C	MULTI-CONDUCTOR
CONT.	CONTINUATION	MDS	MAIN DISTRIBUTION
			SWITCHBOARD
DISC.	DISCONNECT SWITCH	MDP	MAIN DISTRIBUTION
DIV.	DIVISION		PANEL
DN.	DOWN	MANUF.	MANUFACTURER
		MF	MAINTENANCE FACTOR
EA.	EACH	MAX.	MAXIMUM
ELEC. CL.	ELECTRICAL CLOSET	MB	MAIN BREAKER
ELEC.	ELECTRICAL	MCM	THOUSAND CIRCULAR
E.C.	ELECTRICAL CONTRACTOR		MILLS
E.M.T.	ELECTRICAL METALLIC TUBING	MTD.	MOUNTED
ENT.	ENTRANCE	MIN.	MINIMUM
ENCL.	ENCLOSURE	M.L.O.	MAIN LUGS ONLY
EQ.	EQUAL		
EQUIP.	EQUIPMENT	N.	NEUTRAL
EXT.	EXTERNAL/EXTERIOR	NC	NORMAL CLOSED
		N.E.C.	NATIONAL ELECTRICAL CODE
			NATIONAL ELECTRICAL MANUFACTURERS ASSOCIATION
F.	FAHRENHEIT DEGREES	NEMA	NOT IN CONTRACT
FC	FOOTCANDLE		NORMALLY OPEN
FT.	FEET		NOT TO SCALE
FDN.	FOUNDATION	NIC	NUMBER
FIXT.	FIXTURE	NO	
FLEX.	FLEXIBLE	NTS	
FL.	FLOOR	NO./#	
FLA	FULL LOAD AMPERES		
		%	PERCENT
G.C.	GENERAL CONTRACTOR	ø	PHASE
GND.	GROUND	PB	PULL BOX
			WP
			WEATHERPROOF

LIGHTING

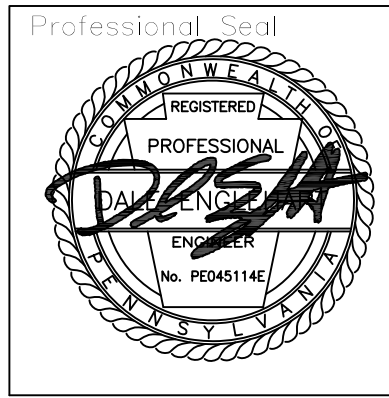
- FA★ FIXTURE TYPE (INDICATION)
- PP1-X EXTERIOR POLE MOUNTED AREA LIGHT
- PP1-X CIRCUIT DESIGNATION

ELECTRICAL KEYED NOTES

1. PROVIDE QUAZITE BOX TO ADD NEW EXTERIOR LIGHTING CIRCUITS. PROVIDE CONDUCTORS IN NEW BOX AND PROVIDE BRANCH CIRCUITING TO ADDED LIGHTS.
2. REPLACE EXISTING CONDUCTORS TO EXISTING LIGHTING FIXTURES. MATCH EXISTING CONDUCTOR SIZES AND RUN NEW CONDUCTORS IN CONDUIT TO EXISTING LIGHTING FIXTURE BASE. SEE ONE LINE DIAGRAM SHEET E-111 FOR CIRCUITING.
3. PROVIDE UNSWITCHED POWER TO NEW LED SIGN. SEE PANEL SCHEDULE ON E-111 FOR CONDUCTOR SIZES AND GROUND SIZE. PROVIDE CONDUIT TO NEW QUAZITE BOX AND NEW CONDUIT FROM BOX TO NEW SIGN LOCATION.
4. RELOCATE EXISTING POLE AND FIXTURE. PROVIDE QUAZITE BOX AND INTERCEPT EXISTING CIRCUIT TO EXTEND CIRCUIT TO NEW FIXTURE LOCATION. MATCH EXISTING CONDUCTOR SIZES AND RUN NEW CONDUCTORS IN CONDUIT TO NEW LIGHTING FIXTURE BASE.
5. EACH CONDUIT SHALL BE 2"
6. RELOCATE EXISTING CONDUCTORS, PROVIDE QUAZITE BOX AS NEEDED, MATCH EXISTING CONDUCTOR SIZES AND RUN NEW CONDUCTORS IN CONDUIT TO EXISTING LIGHTING FIXTURE.
7. PROVIDE (3) SINGLE POLE AND (3) 3-WAY WEATHER PROOF SWITCHES FOR SIGN CONTROL. WIRE SINGLE POLE SWITCHES FOR ON/OFF OF POWER AND 3-WAY SWITCH FOR POWERING "OPEN" AND "CLOSED" LIGHTS.
8. REPLACE CONDUCTORS AND CONDUIT IN ALL AREA UNDER NEW PAVEMENT WORK. CONDUCTORS ARE TO MATCH EXISTING SIZES AND CONDUIT IS TO BE SIZED PER NEC ANNEX C.

CONSTRUCTION DOCUMENTS

Revisions	Date



Drawing Scale
SCALE: 0 25 50 FEET
Drawing Title
SITE ELECTRICAL PLAN

Project Title	PARKING LOT 7 EXPANSION
Building No.	LOT 7
Location	CANANDAIGUA, NEW YORK

Date	06/23/2016
Project No.	528A5-16-505
Drawn	TAD
Checked	CJC
E-100	17 of 20

V.A.