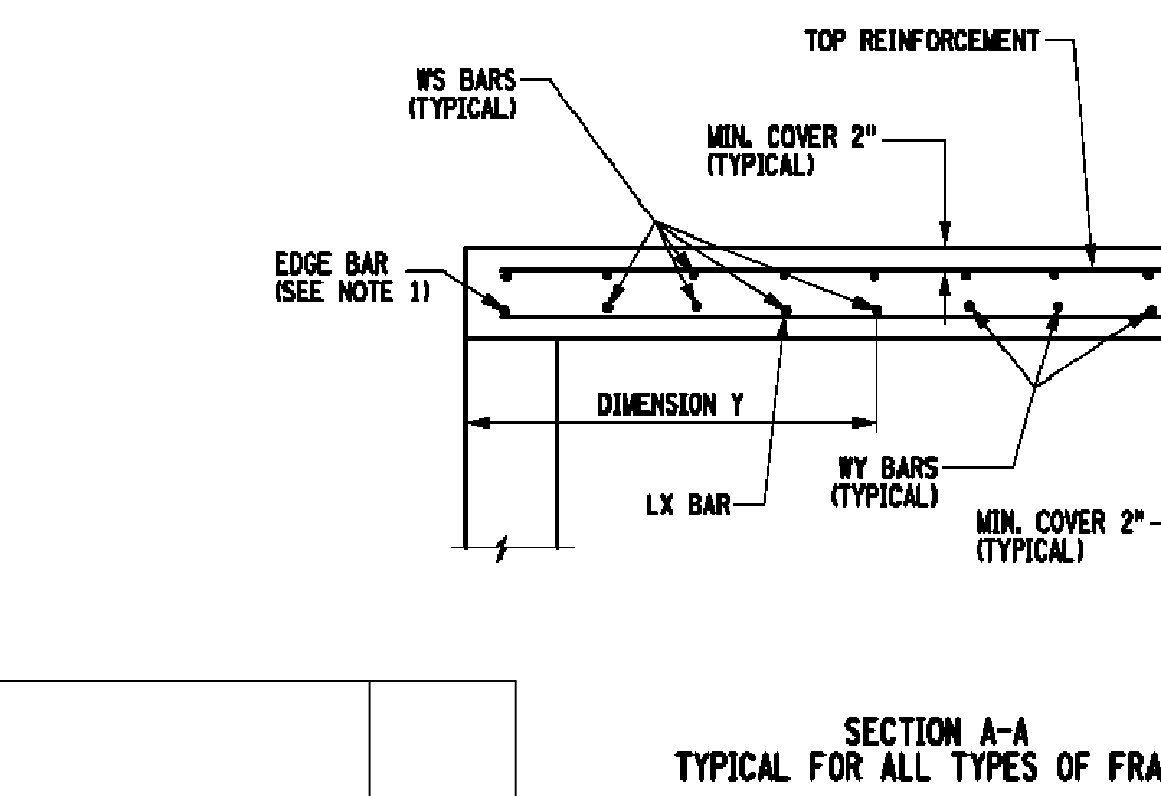
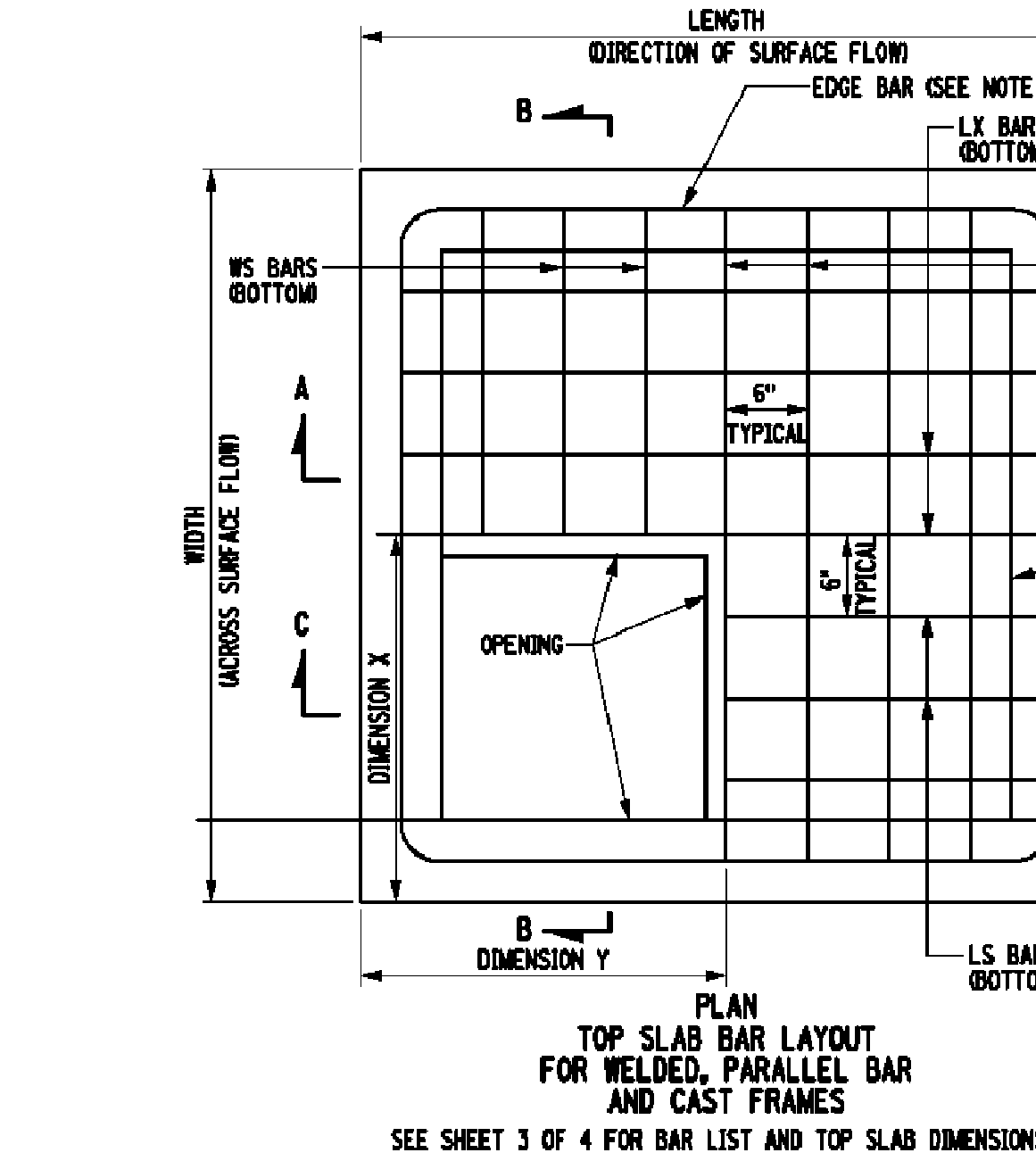


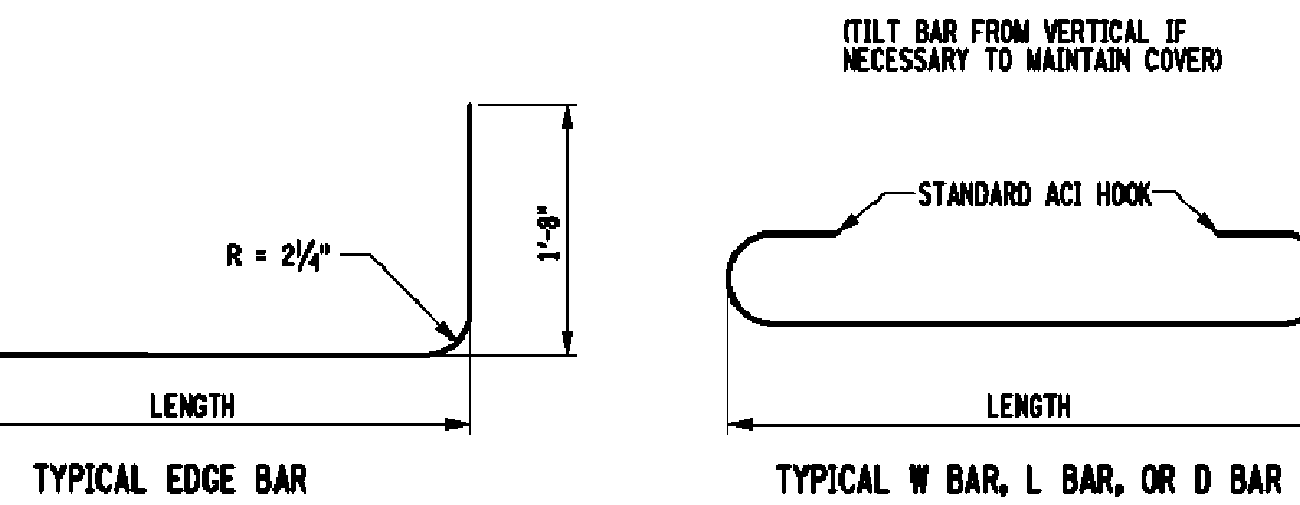
BOTTOM REINFORCEMENT											
STR. TYPE	FRAM. NO.	NO. OF BARS	DESIG. OF BARS	NO. OF NATION BARS	DESIG. OF BARS	NO. OF NATION BARS	DESIG. OF BARS	NO. OF NATION BARS	DESIG. OF BARS	NO. OF NATION BARS	DESIG. OF BARS
A	3		5	6LX1	5	6WS1	1	6WY1	2	6E3	2
B	3		5	6LX1	5	6WS1	1	6WY1	2	6E3	2
B	11		4	6LX1	5	6WS1	1	6WY1	2	6E3	2
C	3		7	6LX1	5	6WS1	1	6WY1	2	6E3	2
C	11		6	6LX1	5	6WS1	1	6WY1	2	6E3	2
D	3		10	6LX1	5	6WS1	1	6WY1	2	6E3	2
D	11		9	6LX1	5	6WS1	1	6WY1	2	6E3	2
E	3	6L54	3	6LX3	5	6WS2	3	6WY1	2	6E1	2
F	3	6L54	5	6LX3	5	6WS1	3	6WY1	4	6E3	
F	6	6L512	4	6LX3	5	6WS9	4	6WY1	4	6E3	
F	11	6L54	4	6LX3	5	6WS1	3	6WY1	4	6E3	
G	3	6L54	7	6LX3	5	6WS19	3	6WY5	2	6E5	2
G	6	6L52	6	6LX3	5	6WS11	4	6WY5	2	6E5	2
G	11	6L54	6	6LX3	5	6WS19	3	6WY5	2	6E5	2
H	3	6L54	10	6LX3	5	6WS21	3	6WY1	2	6E1	2
H	6	6L512	10	6LX3	5	6WS25	4	6WY1	2	6E1	2
H	11	6L54	8	6LX3	5	6WS23	3	6WY1	2	6E1	2
I	3	6L514	3	6LX5	5	6WS2	5	6WY1	2	6E1	2
J	3	6L514	5	6LX5	5	6WS11	5	6WY1	2	6E3	2
J	6	6L519	4	6LX5	5	6WS9	6	6WY1	2	6E3	2
J	11	6L514	4	6LX5	5	6WS1	5	6WY1	2	6E3	2
J	16	6L54	4	6LX5	5	6WS1	7	6WY1	2	6E3	2
K	3	6L514	7	6LX5	5	6WS19	5	6WY1	4	6E5	
K	6	6L519	6	6LX5	5	6WS11	6	6WY1	4	6E5	
K	11	6L514	6	6LX5	5	6WS15	5	6WY1	4	6E5	
K	16	6L55	6	6LX5	7	6WS13	3	6WY1	4	6E5	
K	22	6L59	4	6LX5	6	6WS8	4	6WY1	4	6E5	
L	3	6L514	10	6LX5	5	6WS21	5	6WY1	2	6E1	2
L	6	6L519	10	6LX5	5	6WS25	6	6WY1	2	6E1	2
L	11	6L514	8	6LX5	5	6WS23	5	6WY1	2	6E1	2
L	16	6L55	9	6LX5	7	6WS21	3	6WY1	2	6E1	2
L	22	6L59	9	6LX5	6	6WS19	4	6WY1	2	6E1	2
M	3	6L525	3	6LX7	5	6WS2	8	6WY1	2	6E1	2
N	3	6L525	5	6LX7	5	6WS8	8	6WY1	2	6E1	2
N	6	6L530	4	6LX7	3	6WS6	10	6WY1	2	6E1	2
N	11	6L524	3	6LX7	5	6WS4	6	6WY1	2	6E1	2
N	16	6L519	4	6LX7	7	6WS3	6	6WY1	2	6E1	2
O	3	6L525	7	6LX7	5	6WS16	8	6WY1	2	6E1	2
O	6	6L530	7	6LX7	3	6WS14	10	6WY1	2	6E1	2
O	11	6L525	6	6LX7	5	6WS12	8	6WY1	2	6E1	2
O	16	6L519	6	6LX7	7	6WS10	6	6WY1	2	6E1	2
O	22	6L522	4	6LX7	5	6WS5	7	6WY1	2	6E1	2
P	3	6L525	10	6LX7	5	6WS21	8	6WY1	4	6E1	2
P	6	6L530	10	6LX7	3	6WS25	10	6WY1	4	6E1	2
P	11	6L525	9	6LX7	5	6WS23	8	6WY1	4	6E1	2
P	16	6L519	9	6LX7	7	6WS21	6	6WY1	4	6E1	2
P	22	6L522	8	6LX7	6	6WS19	7	6WY1	4	6E1	2

TOP SLAB DIMENSIONS											
STR. TYPE	6" THICK WALLS	8" THICK WALLS	TOP REINFORCEMENT	NOTES 3 AND 4)							
A	4'-0"	4'-0"	4'-0"	4'-0"	6" X 6" W4 X W4						
B	5'-0"	4'-0"	5'-4"	4'-0"	6" X 6" W4 X W4						
C	6'-0"	4'-0"	6'-4"	4'-0"	6" X 6" W4 X W4						
D	7'-8"	4'-0"	6'-0"	4'-0"	6" X 6" W4 X W4						
E	4'-0"	5'-0"	6'-4"	4'-0"	6" X 6" W4 X W4						
F	5'-0"	5'-0"	5'-4"	4'-0"	6" X 6" W4 X W4						
G	6'-0"	5'-0"	6'-4"	4'-0"	6" X 6" W4 X W4						
H	7'-8"	5'-0"	6'-0"	4'-0"	6" X 6" W4 X W4						
I	4'-0"	6'-0"	4'-4"	4'-0"	6" X 6" W4 X W4						
J	5'-0"	6'-0"	5'-4"	4'-0"	6" X 6" W4 X W4						
K	6'-0"	6'-0"	6'-4"	4'-0"	6" X 6" W4 X W4						
L	7'-8"	6'-0"	6'-4"	4'-0"	6" X 6" W5 X W5						
M	4'-0"	7'-8"	4'-4"	4'-0"	6" X 6" W5 X W5						
N	5'-0"	6'-0"	5'-4"	4'-0"	6" X 6" W5 X W5						
O	6'-0"	7'-8"	6'-4"	4'-0"	6" X 6" W5 X W5						
P	7'-8"	7'-8"	6'-0"	4'-0"	6" X 6" W5 X W5						

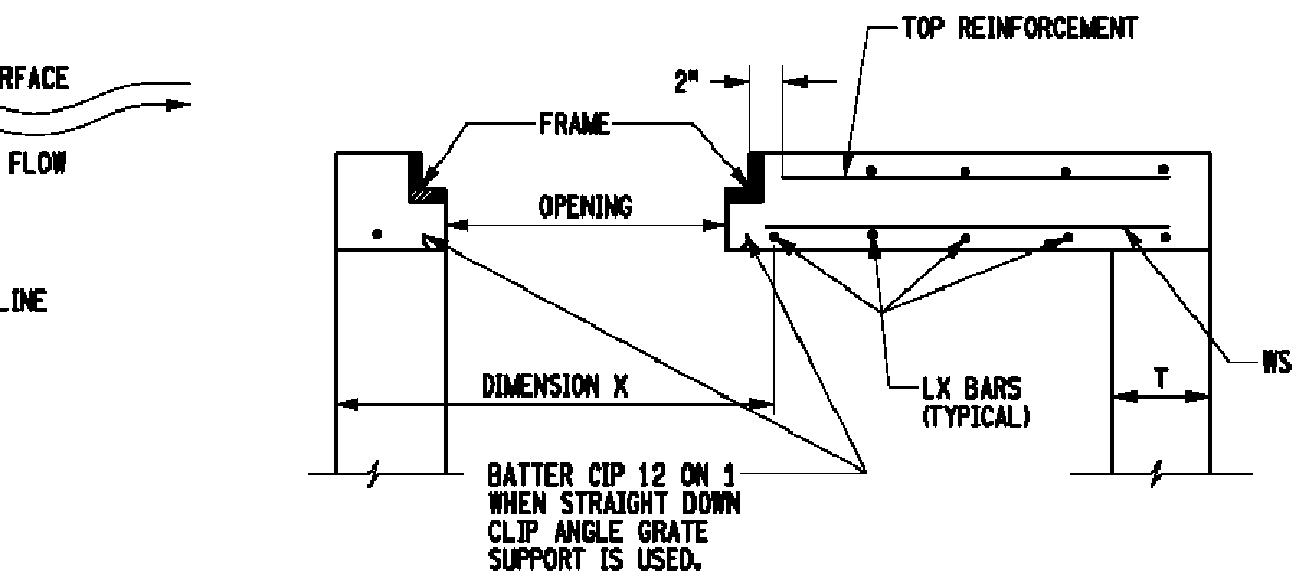
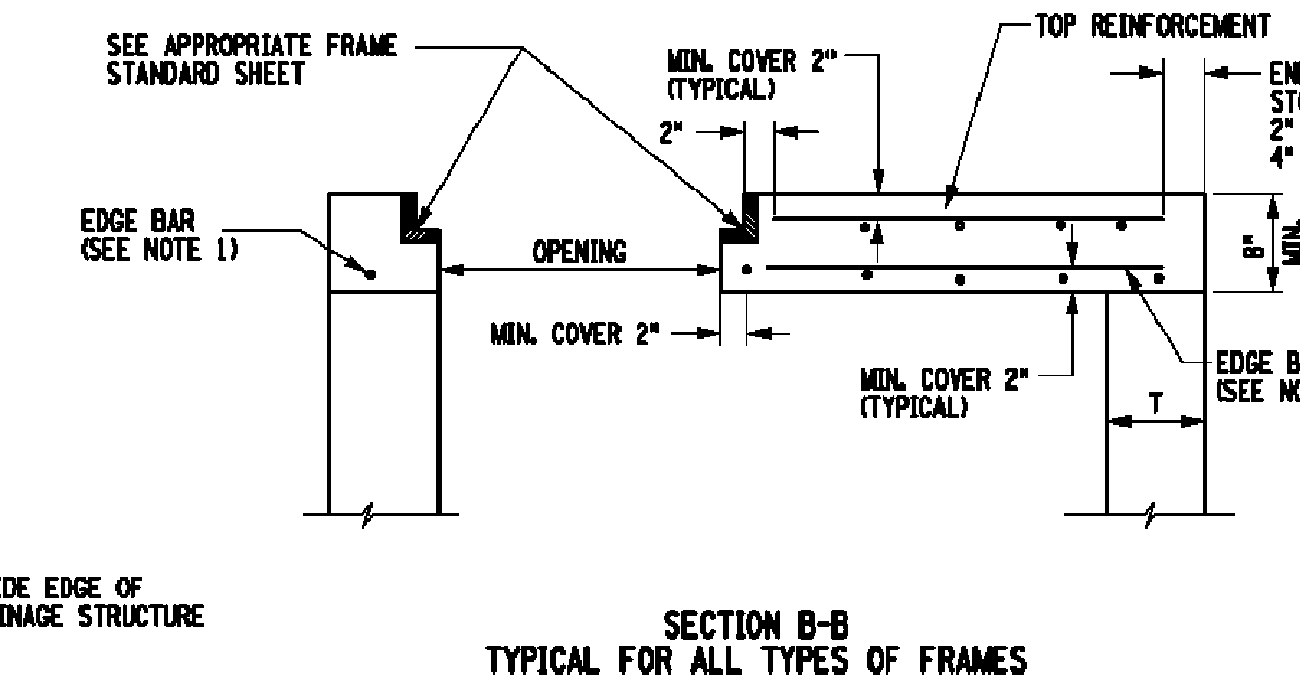


Revisions	Date

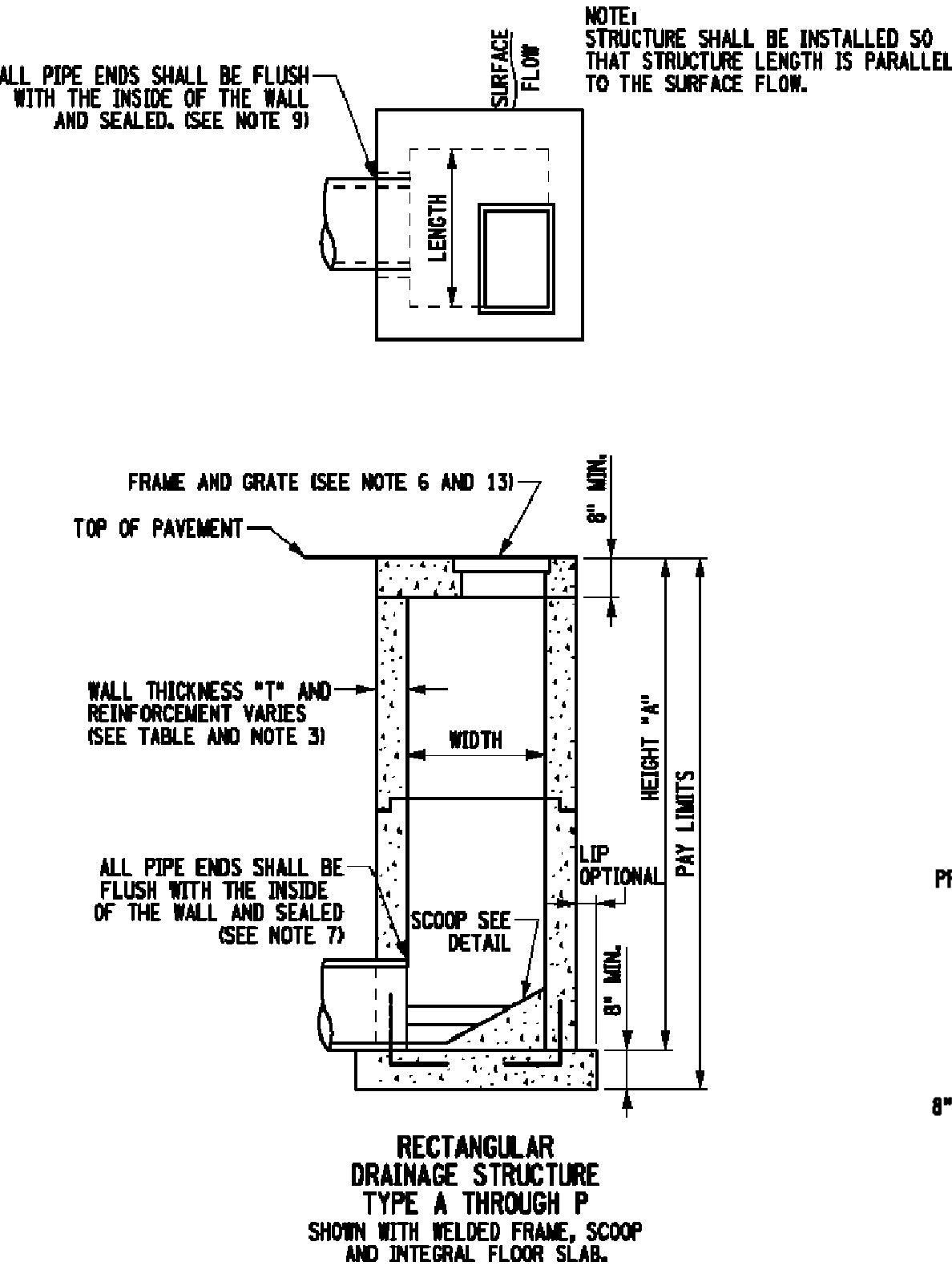
BAR LIST											
DESIGNATION	LENGTH	SIZE	DESCRIPTION	DESIGNATION	LENGTH	SIZE	DESCRIPTION				
6L54	1'-6"	#6	SHORT L BAR	7L54	1'-6"	#7	SHORT L BAR				
6L55	1'-7"	#6	SHORT L BAR	7L55	1'-7"	#7	SHORT L BAR				
6L57	1'-9"	#6	SHORT L BAR	7L57	1'-9"	#7	SHORT L BAR				
6L58	1'-11"	#6	SHORT L BAR	7L58	1'-11"	#7	SHORT L BAR				
6L59	2'-0"	#6	SHORT L BAR	7L59	2'-0"	#7	SHORT L BAR				
6L512	2'-3"	#6	SHORT L BAR	7L512	2'-3"	#7	SHORT L BAR				
6L514	2'-5"	#6	SHORT L BAR	7L514	2'-5"	#7	SHORT L BAR				
6L516	2'-9"	#6	SHORT L BAR	7L516	2'-9"	#7	SHORT L BAR				
6L519	3'-3"	#6	SHORT L BAR	7L519	3'-3"	#7	SHORT L BAR				
6L525	4'-0"	#6	SHORT L BAR	7L521	3'-7"	#7	SHORT L BAR				
6LX1	3'-2"	#6	LONG L BAR	7L522	3'-4"	#7	SHORT L BAR				
6LX3	4'-5"	#6	LONG L BAR	7L525	4'-1"	#7	SHORT L BAR				
6LX5	5'-6"	#6	LONG L BAR	7L527	4'-5"	#7	SHORT L BAR				
6LX7	7'-2"	#6	LONG L BAR	7L530	4'-11"	#7	SHORT L BAR				
6WS1	1'-6"	#6	SHORT W BAR	7LX3	4'-6"	#7	LONG L BAR				
6WS2	1'-8"	#6	SHORT W BAR	7LX5	6'-5"	#7	LONG L BAR				
6WS5	1'-11"	#6	SHORT W BAR	7LX7	7'-2"	#7	LONG L BAR				
6WS7	2'-3"	#6	SHORT W BAR	7WS2	1'-5"	#7	SHORT W BAR				
6WS8	2'-3"	#6	SHORT W BAR	7WS3	1'-11"	#7	SHORT W BAR				
6WS9	2'-4"	#6	SHORT W BAR	7WS4	2'-1"	#7	SHORT W BAR				
6WS10	2'-5"	#6	SHORT W BAR	7WS5	2'-3"	#7	SHORT W BAR				
6WS11	2'-7"	#6	SHORT W BAR	7WS6	2'-4"	#7	SHORT W BAR				
6WS13	2'-11"	#6	SHORT W BAR	7WS7	2'-5"	#7	SHORT W BAR				
6WS15	3'-2"	#6	SHORT W BAR	7WS8	2'-7"	#7	SHORT W BAR				
6WS17	3'-4"	#6	SHORT W BAR	7WS10	2'-11"	#7	SHORT W BAR				
6WS19	3'-7"	#6	SHORT W BAR	7WS12	3'-2"	#7	SHORT W BAR				
6WS21	4'-1"	#6	SHORT W BAR	7WS14	3'-4"	#7	SHORT W BAR				
6WS23	4'-10"	#6	SHORT W BAR	7WS16	3'-6"	#7	SHORT W BAR				
6WS27	5'-3"	#6	SHORT W BAR	7WS19	4'-0"	#7	SHORT W BAR				
6WY1	3'-4"	#6	LONG W BAR	7WS20	4'-1"	#7	SHORT W BAR				
6WY3	4'-6"	#6	LONG W BAR	7WS21	4'-7"	#7	SHORT W BAR				
6WY5	5'-6"	#6	LONG W BAR	7WS23	4'-10"	#7	SHORT W BAR				
6WY7	7'-2"	#6	LONG W BAR	7WS25	5'-0"	#7	SHORT W BAR				
6D1	1'-6"	#6	DIAGONAL BAR	7WS27	5'-3"	#7	SHORT W BAR				
6E1	3'-3 1/2"	#6	EDGE BAR	7WY3	4'-6"	#7	LONG W BAR				
6E3	4'-3 1/2"	#6	EDGE BAR	7WY5	5'-6"	#7	LONG W BAR				
6E5	5'-3 1/2"	#6	EDGE BAR	7WY7	7'-2"	#7	LONG W BAR				
6E7	6'-4 1/2"	#6	EDGE BAR	7E5	5'-3"	#7	EDGE BAR				
				7E7	6'-11"	#7	EDGE BAR				



- TOP SLAB REINFORCEMENT NOTES:
- THE E BARS (EDGE BARS) ARE PLACED 3" FROM THE OUTSIDE EDGE FOR TOP SLABS ON 6" WALLS, AND 5" FROM THE OUTSIDE EDGE FOR 8" WALLS.
 - THE LX BARS ARE LOCATED USING THE X DIMENSIONS AND THE WY BARS ARE LOCATED USING THE Y DIMENSIONS. ALL W AND L BARS SHALL BE EVENLY SPACED AT APPROX. 6" SO THAT THE DISTANCE BETWEEN THE LAST W OR L BAR AND ADJACENT EDGE BAR SHALL NOT EXCEED 10".
 - TOP SLABS FOR TYPE A, B, C, D, F, G, L, J, K AND MOST M DRAINAGE STRUCTURES ARE REINFORCED WITH #6 AND #6X, #4 X #4 FABRIC.
 - TOP SLABS FOR TYPE H, L, N, O, P AND PART OF TYPE M DRAINAGE STRUCTURES ARE REINFORCED WITH #7 BARS AND #6X, #5 X #5 FABRIC. THE CONTRACTOR HAS THE OPTION OF USING #6 BARS AND A BAR SPACING OF 5" WHEN THIS OPTION IS USED, THE MAXIMUM DISTANCE BETWEEN THE LAST W OR L BAR AND THE EDGE BAR SHALL NOT EXCEED 5".



- NOTES:
- THE E BARS (EDGE BARS) ARE PLACED 3" FROM THE OUTSIDE EDGE FOR TOP SLABS ON 6" WALLS, AND 5" FROM THE OUTSIDE EDGE FOR 8" WALLS.
 - THE LX BARS ARE LOCATED USING THE X DIMENSION AND THE WY ARE LOCATED USING THE Y DIMENSIONS. ALL W AND L BARS SHALL BE EVENLY SPACED AT APPROXIMATELY 6" SO THAT THE DISTANCE BETWEEN THE LAST W OR L BAR AND THE ADJACENT EDGE BAR SHALL NOT EXCEED 10".
 - TOP SLABS FOR TYPE A, B, C, D, F, G, L, J, K AND M DRAINAGE STRUCTURES ARE REINFORCED WITH #6 BARS ON THE BOTTOM, AND #6X, #4 X #4 FABRIC ON THE TOP.
 - TOP SLABS FOR TYPE H, L, N, O, P AND DRAINAGE STRUCTURES ARE REINFORCED WITH #7 BARS AND #6X, #5 X #5 FABRIC. THE CONTRACTOR HAS THE OPTION OF USING #6 BARS AND A BAR SPACING OF 5" WHEN THIS OPTION IS USED, THE MAXIMUM DISTANCE BETWEEN THE LAST W OR L BAR AND THE EDGE BAR SHALL NOT EXCEED 5".



STRUCTURE SIZES AND PAY CODES
