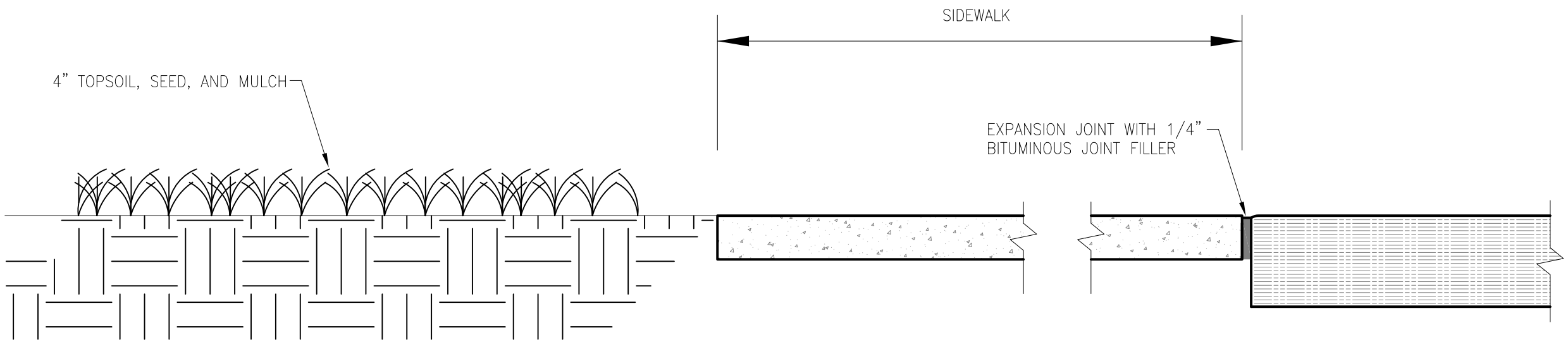
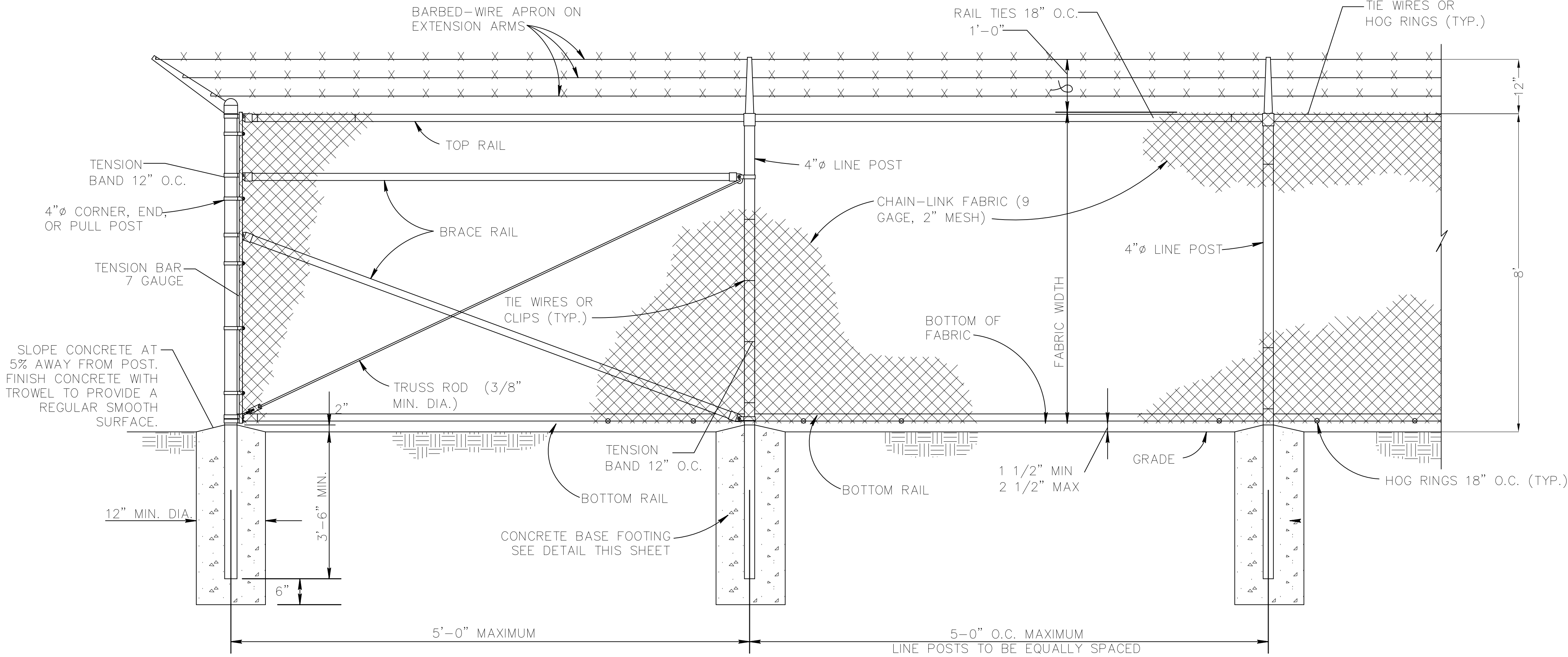


- NOTES:
- EXPANSION JOINTS SHALL BE LOCATED WHERE SIDEWALK ABUTS CONCRETE DRIVEWAYS, CURB OR OTHER ADJACENT STRUCTURES.
 - ONE-HALF INCH BITUMINOUS JOINT FILLER SHALL BE INSTALLED AT EXPANSION JOINT LOCATIONS AND SHALL EXTEND THE FULL DEPTH OF THE CONCRETE.
 - 1" DEEP CONTRACTION JOINTS SHALL BE PLACED AT INTERVALS OF APPROXIMATELY 15' [4572mm] OR AT A SPACING THAT MATCHES THE ADJACENT CURB.
 - FORMED CONTRACTION JOINTS SHALL BE FINISHED WITH A TOOL HAVING A 1/4" [6mm] RADIUS.
 - SCORED JOINTS SHALL BE 1/4" [6mm] DEEP AND PLACED AT THE SPACING INDICATED FOR THE WIDTH OF SIDEWALK OR MATCH SCORED JOINTS OF ADJACENT CURB.
 - CONCRETE SHALL BE FINISHED BY MEANS OF A FLOAT, STEEL TROWELLED AND BROOMED WITH A FINE BRUSH IN A TRANSVERSE DIRECTION.
 - 1/4" DEEP SCORED JOINTS (TYP) SPACED AT 6' [1829mm] OR EQUAL TO SIDEWALK WIDTH.
 - PROVIDE 2" EDGED TROWEL FINISH AROUND EACH FLAG.

CONCRETE SIDEWALK
NOT TO SCALE

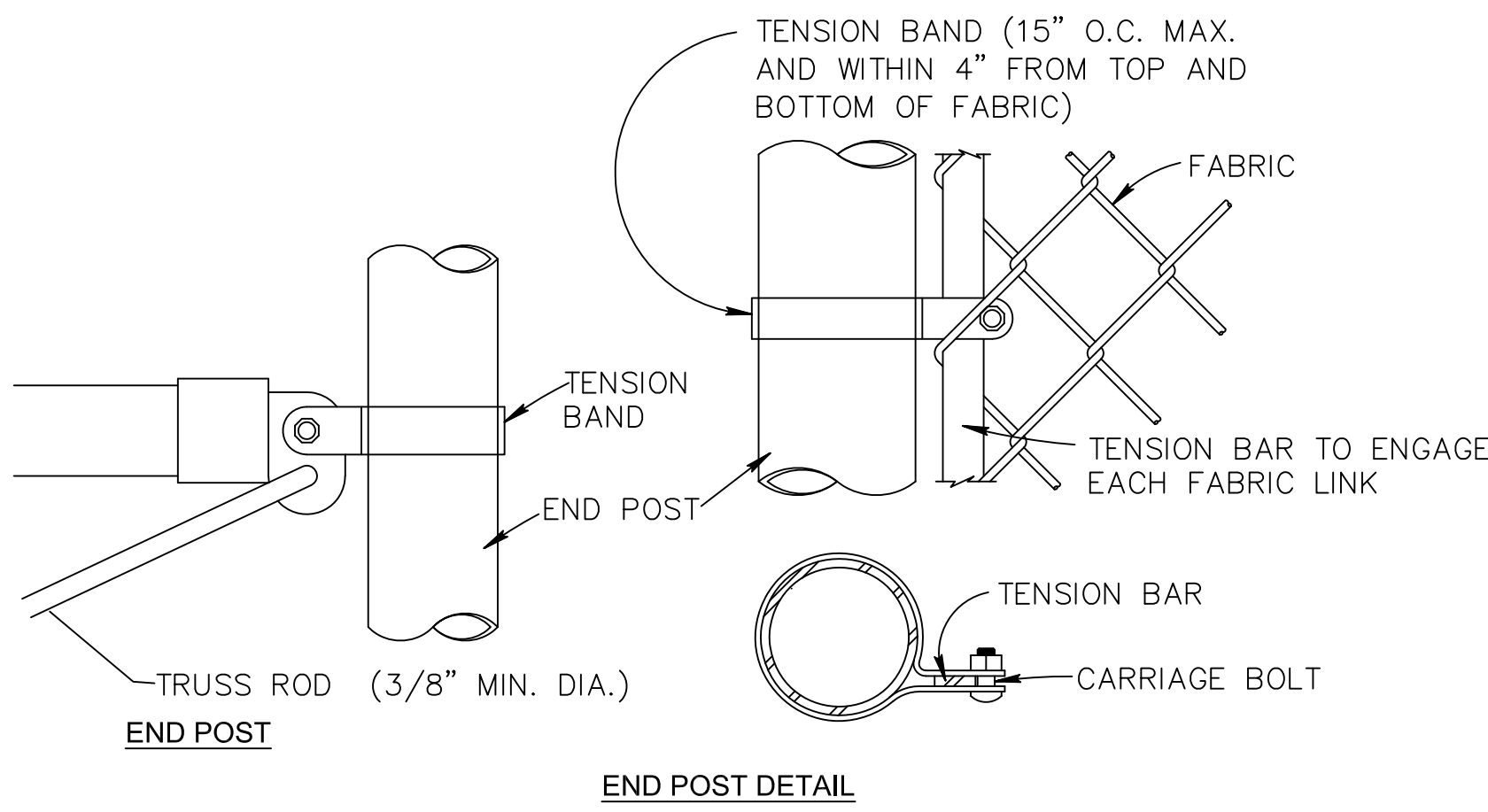


CONCRETE SIDEWALK BORDER DETAIL
NOT TO SCALE

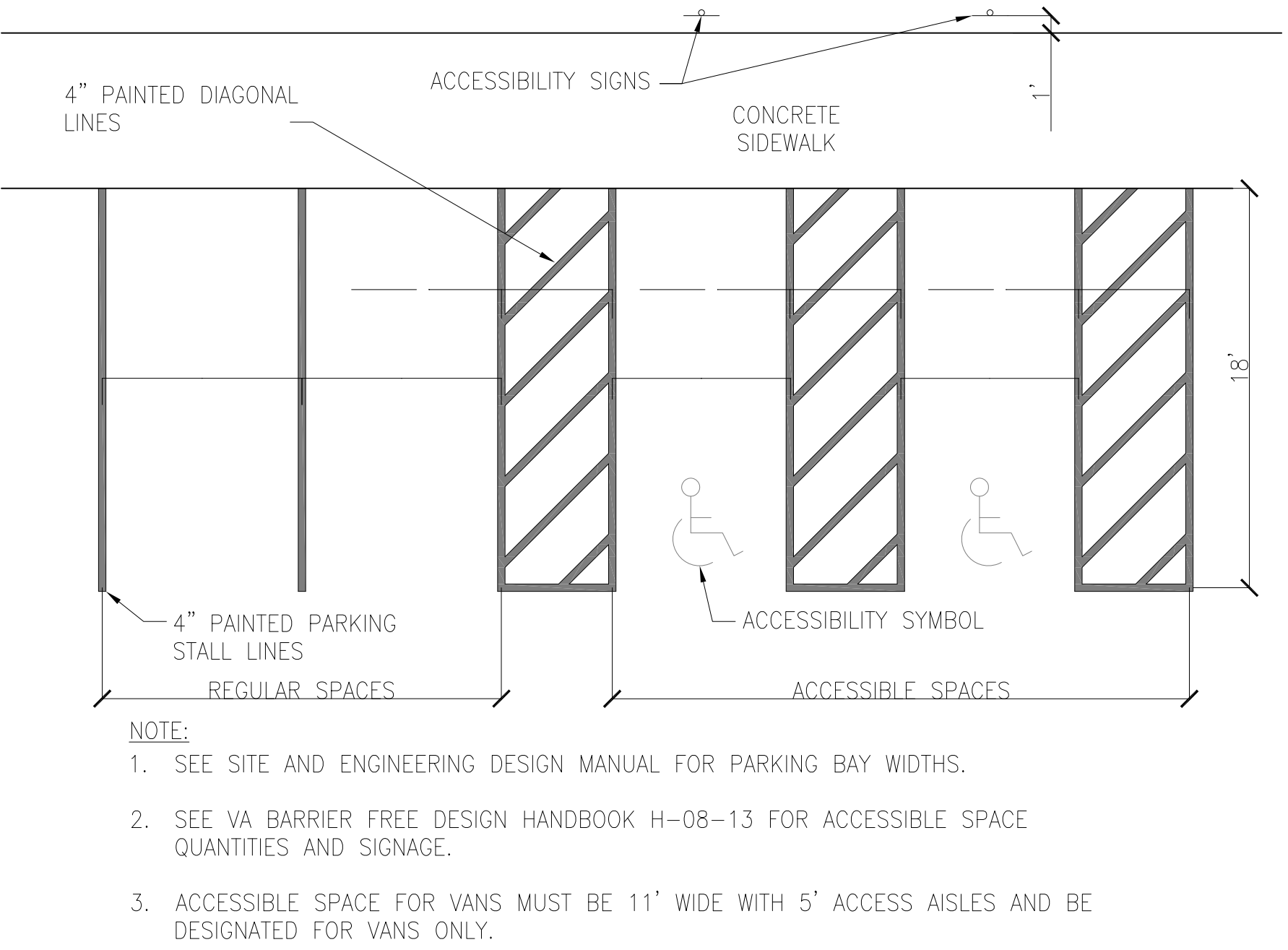


ELEVATION

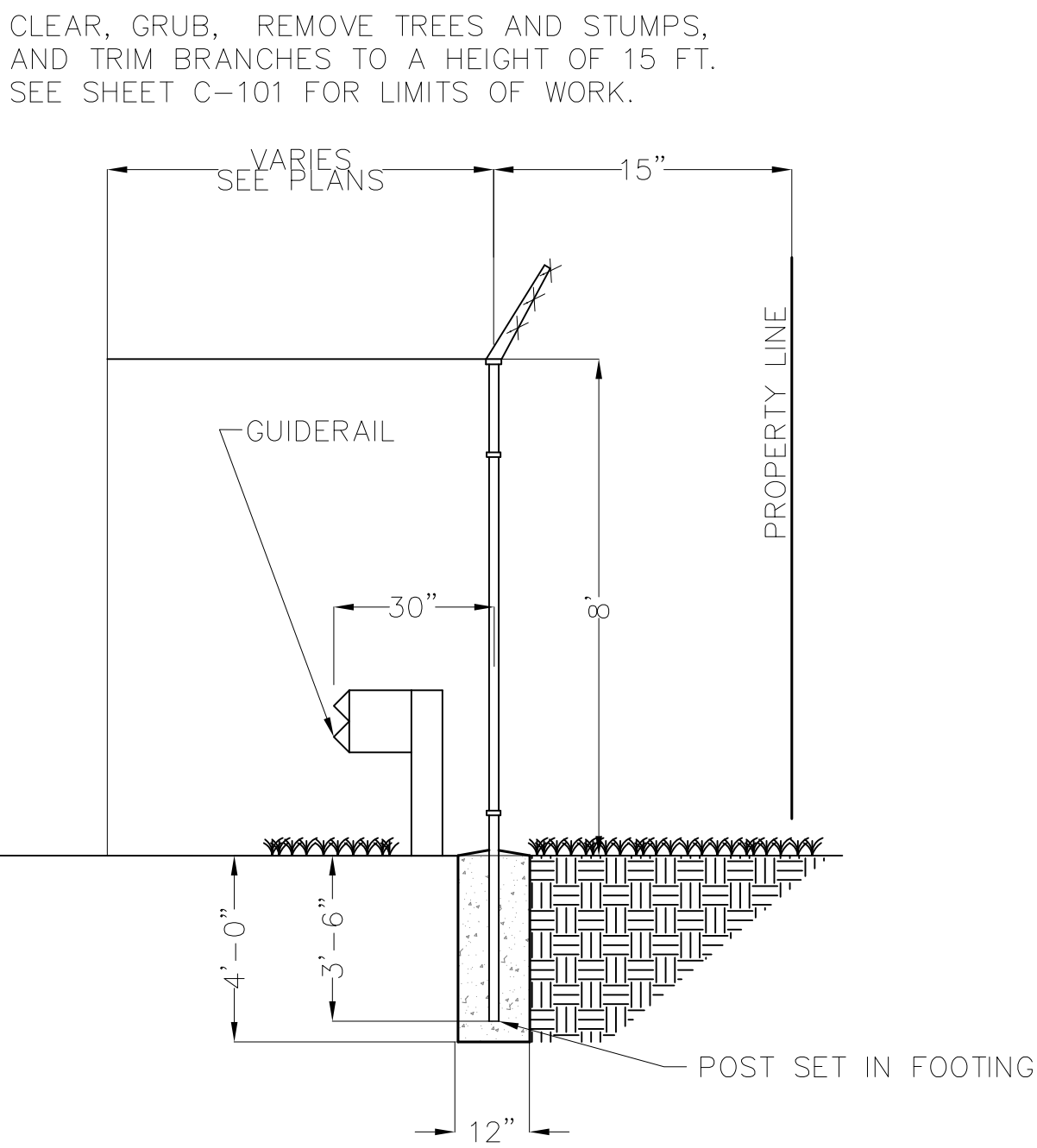
CHAIN LINK FENCE DETAIL
NOT TO SCALE



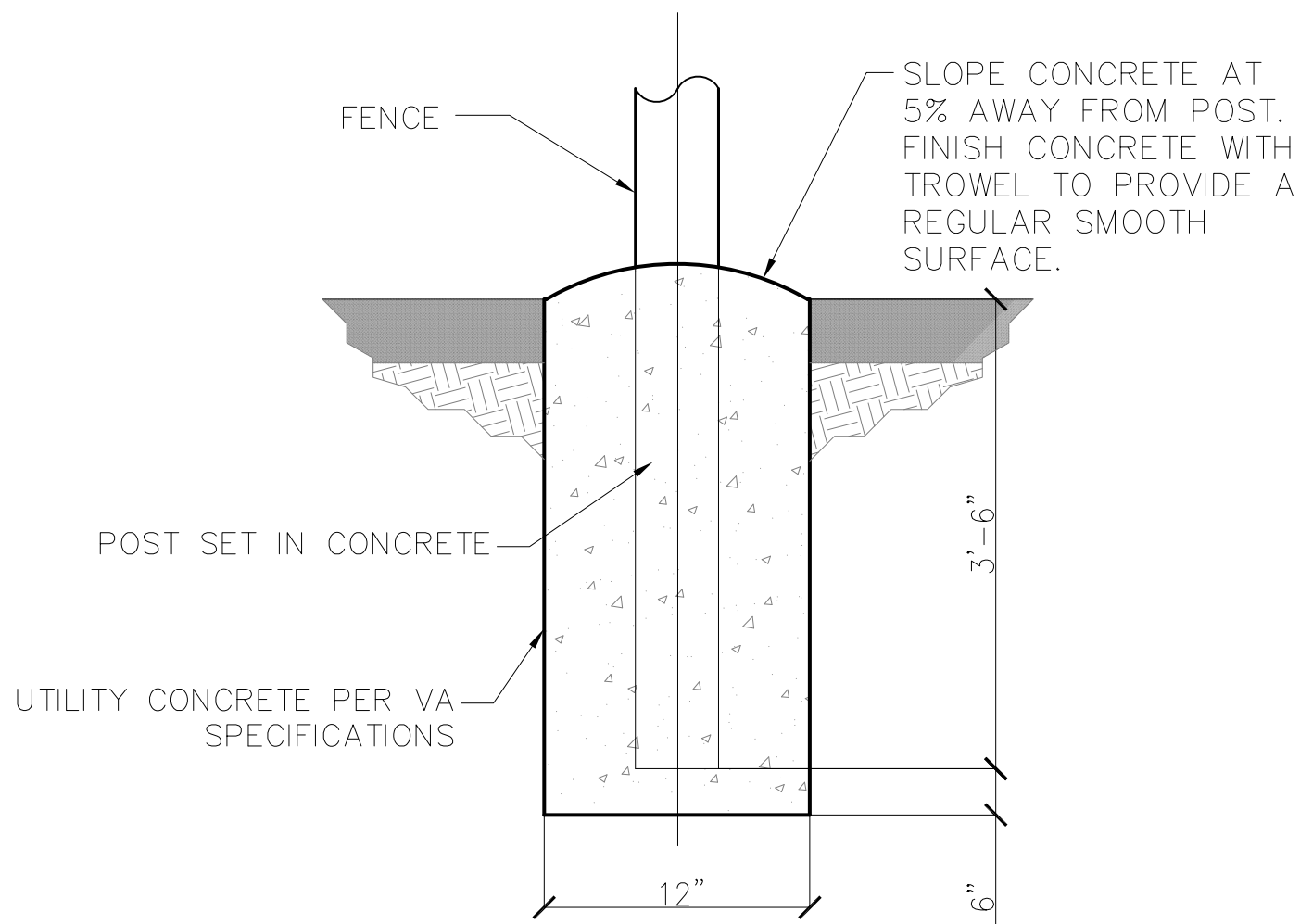
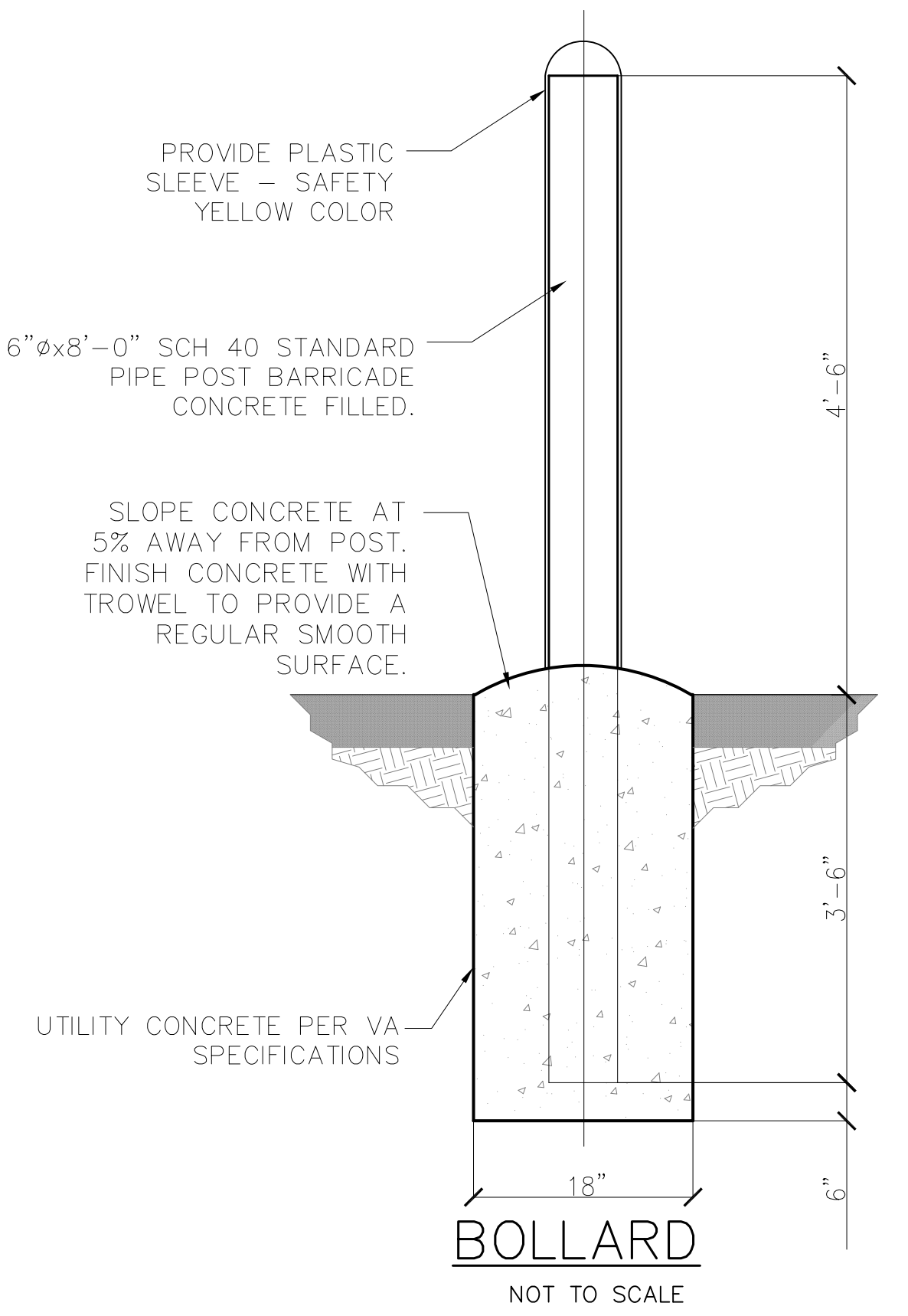
CHAIN LINK FENCE FASTENING DETAILS
FOR CONNECTION TO EXISTING FENCE
NO SCALE



PARKING STALL LAYOUT
NOT TO SCALE

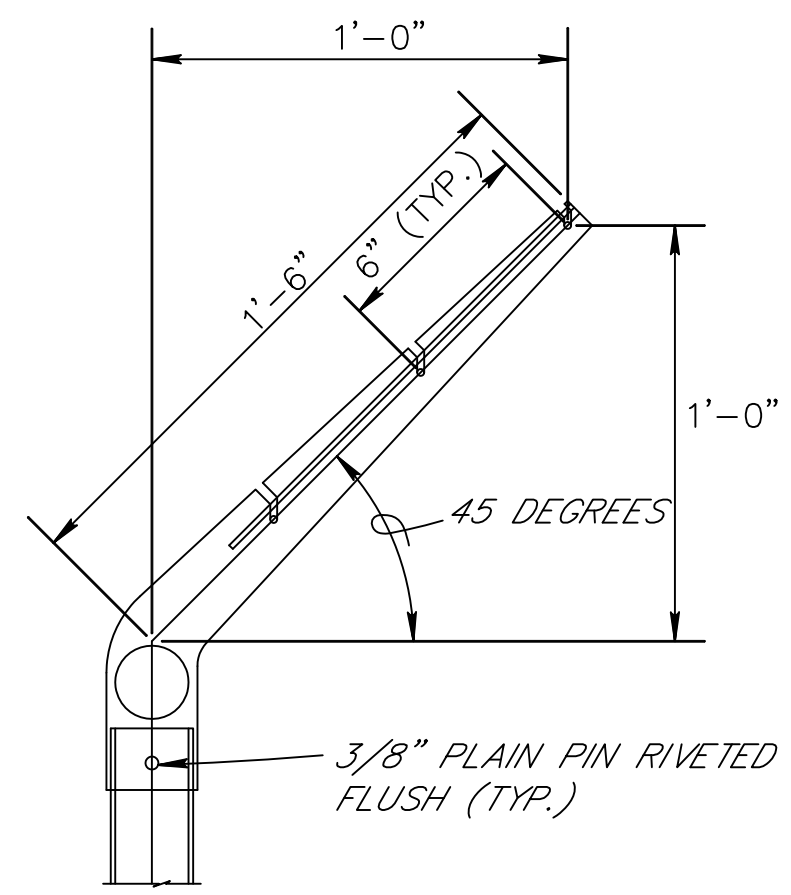


SIDE ELEVATION



CONCRETE BASE FOOTING
DETAIL - FENCE
NOT TO SCALE

- NOTES:
- MINIMUM TOP 12" OF CONCRETE FOOTING SHALL BE FORMED WITH SONOTUBE AND TOP SHALL BE TROWELED SMOOTH.



EXTENSION ARM DETAIL
NO SCALE

CONSTRUCTION DOCUMENTS

| | |
|-----------|------|
| Revisions | Date |
| | |



Consultant

ONEI
NORTHEAST INFRASTRUCTURE, LLC
630 PARK STREET, HONESDALE, PA 18431
570-253-0846 OFFICE 570-253-1935 FAX
WWW.NEINFRA.COM

| | |
|---------------|----------------------|
| Drawing Scale | |
| Drawing Title | CONSTRUCTION DETAILS |

| | |
|---------------|-------------------------|
| Project Title | PARKING LOT 7 EXPANSION |
| Building No. | LOT 7 |
| Location | CANANDAIGUA, NEW YORK |

| | |
|-------------|--------------|
| Date | 06/23/2016 |
| Project No. | 528A5-16-505 |
| Drawn | TAD |
| Checked | CJC |
| Design | CJC |
| Page | 9 of 20 |

V.A.