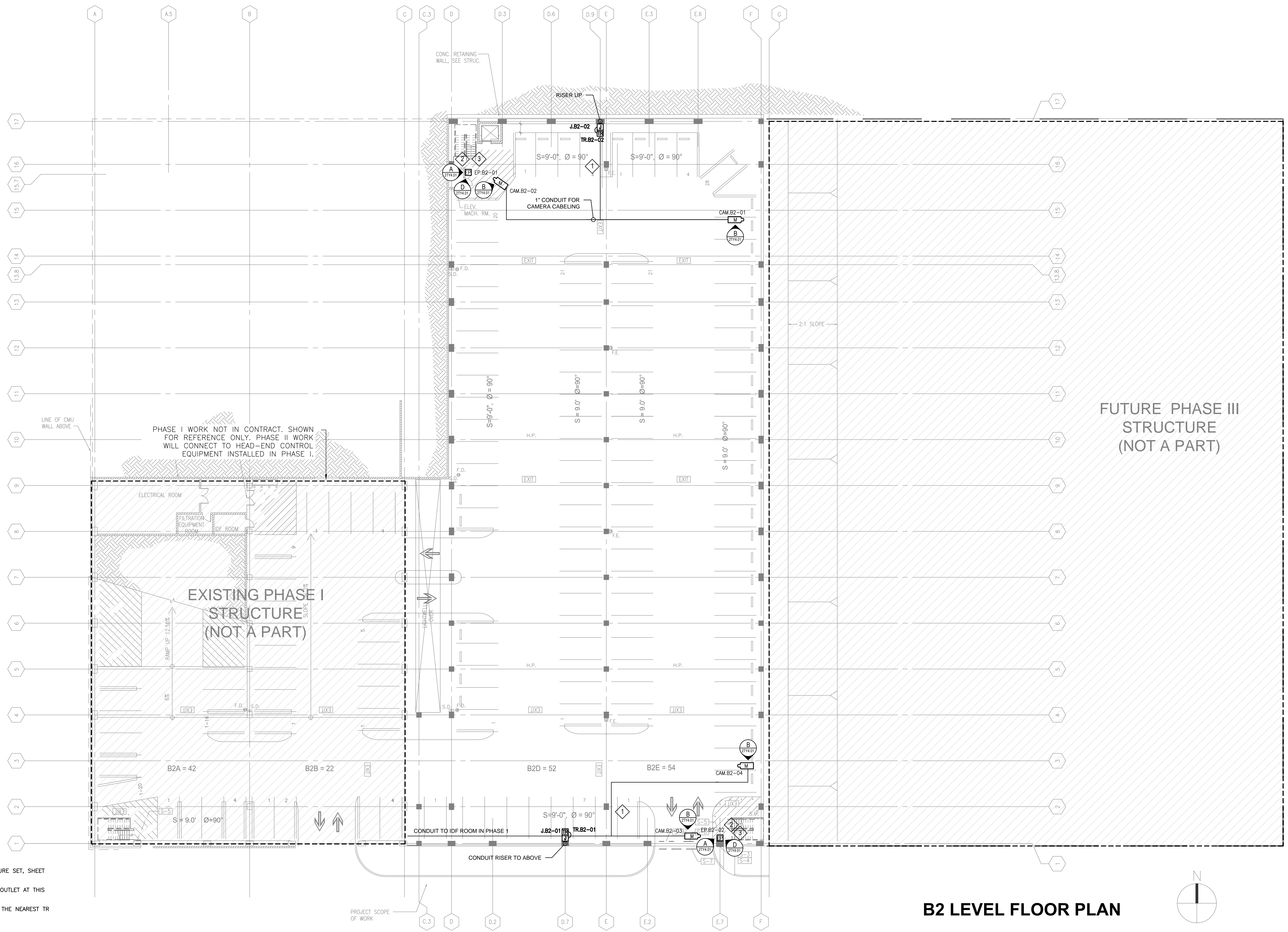




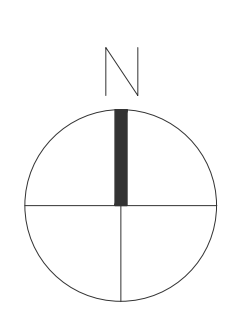


three inches = one foot  
one and one half inches = one foot  
one inch = one foot  
three quarters inch = one foot  
one half inch = one foot  
three eighths inch = one foot  
one quarter inch = one foot  
one eighth inch = one foot  
one eighth inch = one foot



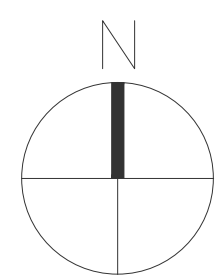
- KEYED NOTES:
- 1 FOR REFERENCE ONLY. SEE TEL-DATA INFRASTRUCTURE SET, SHEET TN2.01.
  - 2 ELECTRICAL CONTRACTOR TO PROVIDE (1) 120 VAC OUTLET AT THIS LOCATION FOR THE EMERGENCY PHONE.
  - 3 1" CONDUIT FROM EMERGENCY PHONE LOCATION TO THE NEAREST TR LOCATION AS SHOWN

B2 LEVEL FLOOR PLAN



<b>CONSULTANTS:</b>  388 17th Street, Suite 230 Oakland, CA 94612 OFFICE: (510) 268-8373 WEBSITE: www.guidepostsolutions.com		<b>ARCHITECT/ENGINEERS:</b> <b>LEO A DALY</b> PLANNING ARCHITECTURE ENGINEERING INTERIORS 550 South Hope Street, 27th Floor Los Angeles, California 90071, USA 213-629-0100 F213-629-0070 EST. 1915		<b>Drawing Title</b> <b>SECURITY AND CCTV SYSTEM</b> <b>B2 LEVEL - DEVICE LAYOUT</b> 1/16" = 1'-0" <b>Approved:</b> Project Director		<b>Project Title</b> <b>PARKING GARAGE #2</b> <b>VA MEDICAL CENTER SAN DIEGO</b> <b>Location</b> <b>SAN DIEGO, CA 92161</b> Date: 03/22/2016 Checked: Drawn: Dwg. of		<b>Project Number</b> <b>664-332</b> Building Number <b>Drawing Number</b> <b>TY2.01</b> Dwg. of		<b>Office of</b> <b>Construction</b> <b>and Facilities</b> <b>Management</b> Department of Veterans Affairs	
---	--	---	--	--	--	--	--	---	--	---	--





FUTURE PHASE III  
STRUCTURE  
(NOT A PART)

EXISTING PHASE I  
STRUCTURE  
(NOT A PART)

PHASE I WORK NOT IN CONTRACT. SHOWN  
FOR REFERENCE ONLY. PHASE II WORK  
WILL CONNECT TO HEAD-END CONTROL  
EQUIPMENT INSTALLED IN PHASE I.

KEYED NOTES:

- ① FOR REFERENCE ONLY. SEE TEL-DATA INFRASTRUCTURE SET, SHEET TN2.01.
- ② ELECTRICAL CONTRACTOR TO PROVIDE (1) 120 VAC OUTLET AT THIS LOCATION FOR THE EMERGENCY PHONE.
- ③ 1' CONDUIT FROM EMERGENCY PHONE LOCATION TO THE NEAREST TEL LOCATION AS SHOWN

[illegible]

**CONSULTANTS:**

---

 **GUIDEPOST SOLUTIONS LLC**


388 17th Street, Suite 230  
Oakland, CA 94612  
OFFICE: (510) 268-8373  
WEBSITE: [www.guidepostsolutions.com](http://www.guidepostsolutions.com)

ARCHITECT/ENGINEERS:

---

**LEO A DALY** PLANNING  
ARCHITECTURE  
ENGINEERING  
INTERIORS

550 South Hope Street, 27<sup>th</sup> Floor  
Los Angeles, California 90071, USA  
213-629-0100 F213-629-0070

 EST. 1915

<p>Drawing Title</p> <p align="center"><b>SECURITY AND CCTV SYSTEM B1 LEVEL - DEVICE LAYOUT</b></p> <p><b>1/16" = 1'-0"</b></p>
<p>Approved: Project Director</p>

Project Title		
<b>PARKING GARAGE #2 VA MEDICAL CENTER SAN DIEGO</b>		
Location		
<b>SAN DIEGO, CA 92161</b>		
Date	Checked	Drawn
<b>03/22/2016</b>		

GO	Project Number <b>664-332</b>
	Building Number
	Drawing Number <b>TY2.02</b>
	Dwg. of

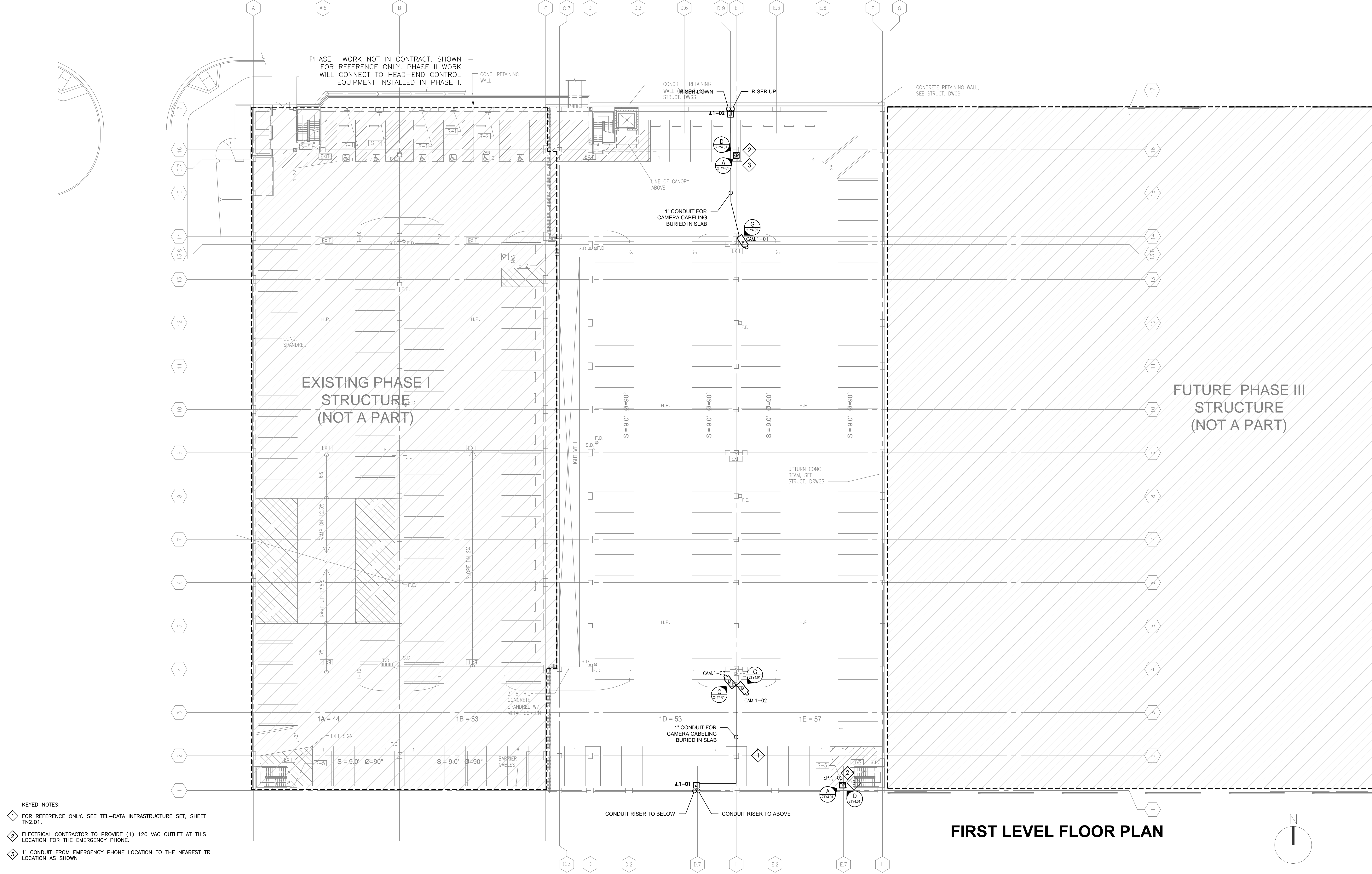
Office of  
Construction  
and Facilities  
Management



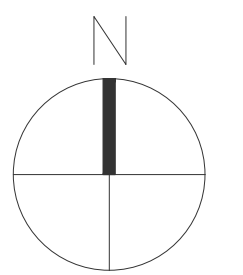
## CONSTRUCTION DOCUMENTS 100%



three inches = one foot  
one and one half inches = one foot  
one inch = one foot  
three quarters inch = one foot  
one half inch = one foot  
three eighths inch = one foot  
one quarter inch = one foot  
one eighth inch = one foot  
one eighth inch = one foot








KEYED NOTES:

- ① FOR REFERENCE ONLY. SEE TEL-DATA INFRASTRUCTURE SET, SHEET TN2.01.
- ② ELECTRICAL CONTRACTOR TO PROVIDE (1) 120 VAC OUTLET AT THIS LOCATION FOR THE EMERGENCY PHONE.
- ③ 1' CONDUIT FROM EMERGENCY PHONE LOCATION TO THE NEAREST T LOCATION AS SHOWN

[illegible]

388 17th Street, Suite 230  
Oakland, CA 94612  
OFFICE: (510) 268-8373  
WEBSITE: [www.guidепostsolutions.com](http://www.guidепostsolutions.com)

550 South Hope Street, 27<sup>th</sup> Floor   
Los Angeles, California 90071, USA  
213-629-0100 F213-629-0070 EST. 1915

EST. 1915

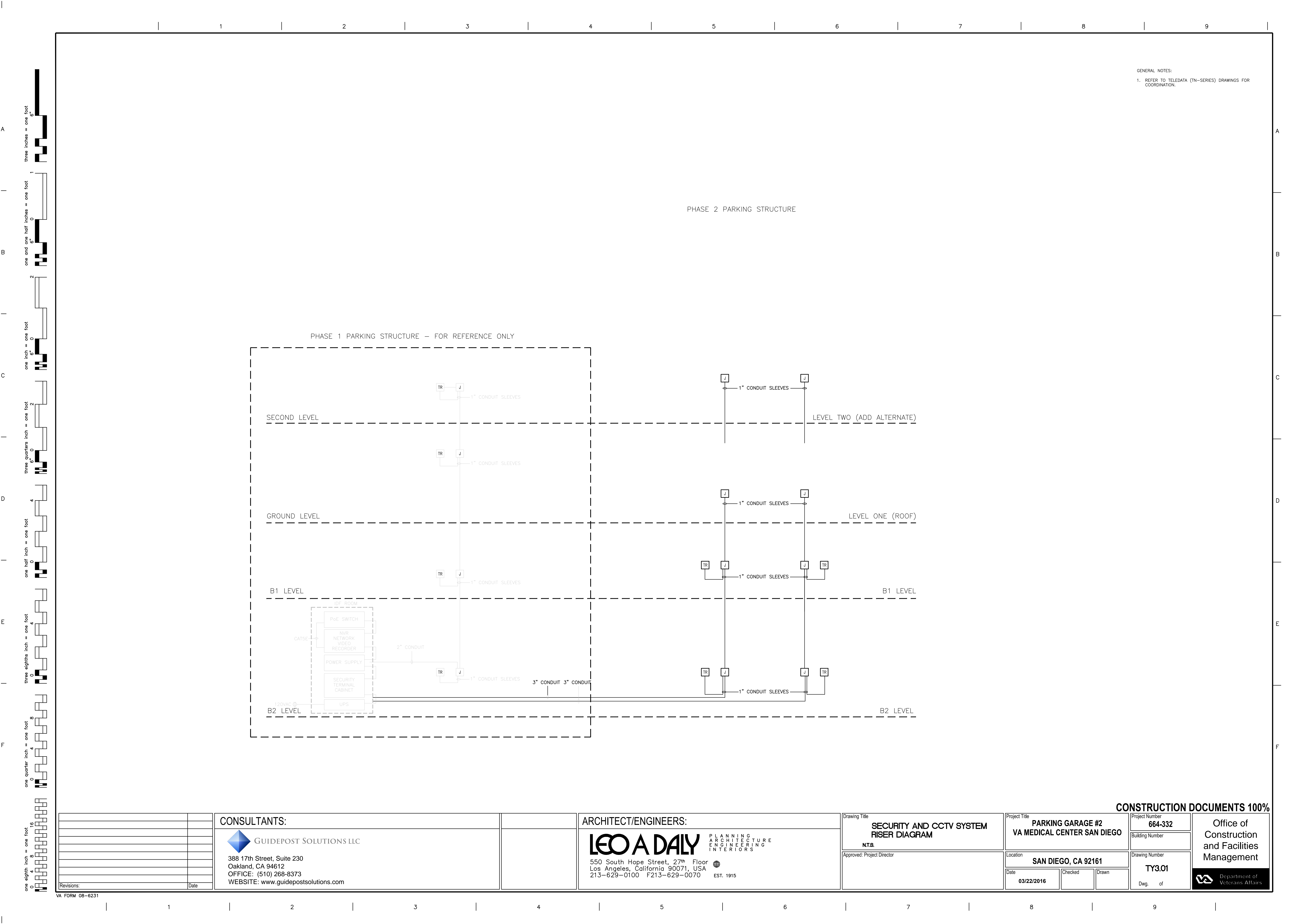
Approved: Project Directo

Dwg. 0




Department of  
Veterans Affairs

**CONSTRUCTION DOCUMENTS 100%**





Project Number <b>664-332</b>	<div>Office of Construction and Facilities Management</div> <div>  Department of Veterans Affairs </div>
Building Number	
Drawing Number <b>TY4.01</b>	
Dwg. of	