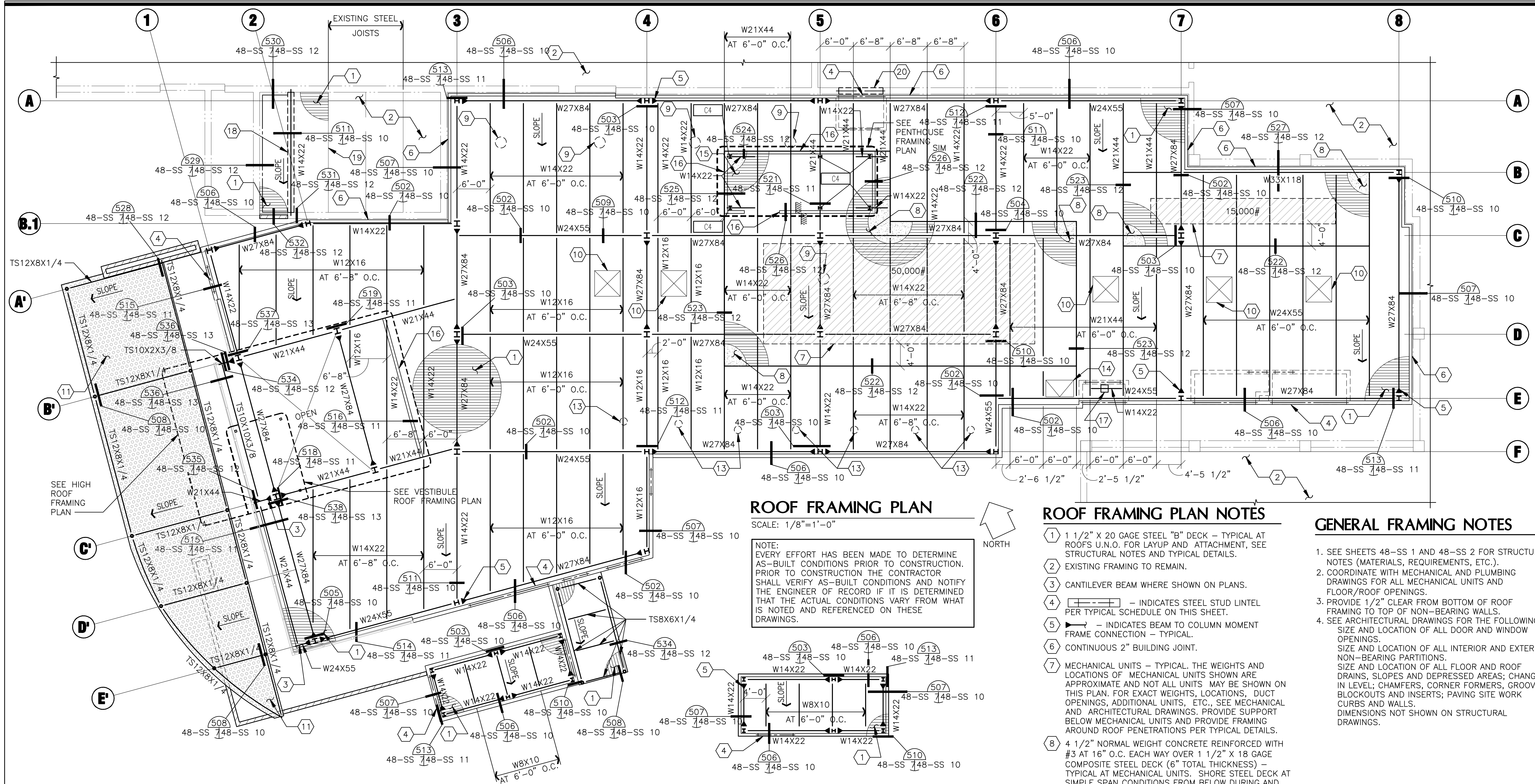


three-eighths inch = one foot  
one-half inch = one foot  
one-quarter inch = one foot  
one-eighth inch = one foot



### ROOF FRAMING PLAN

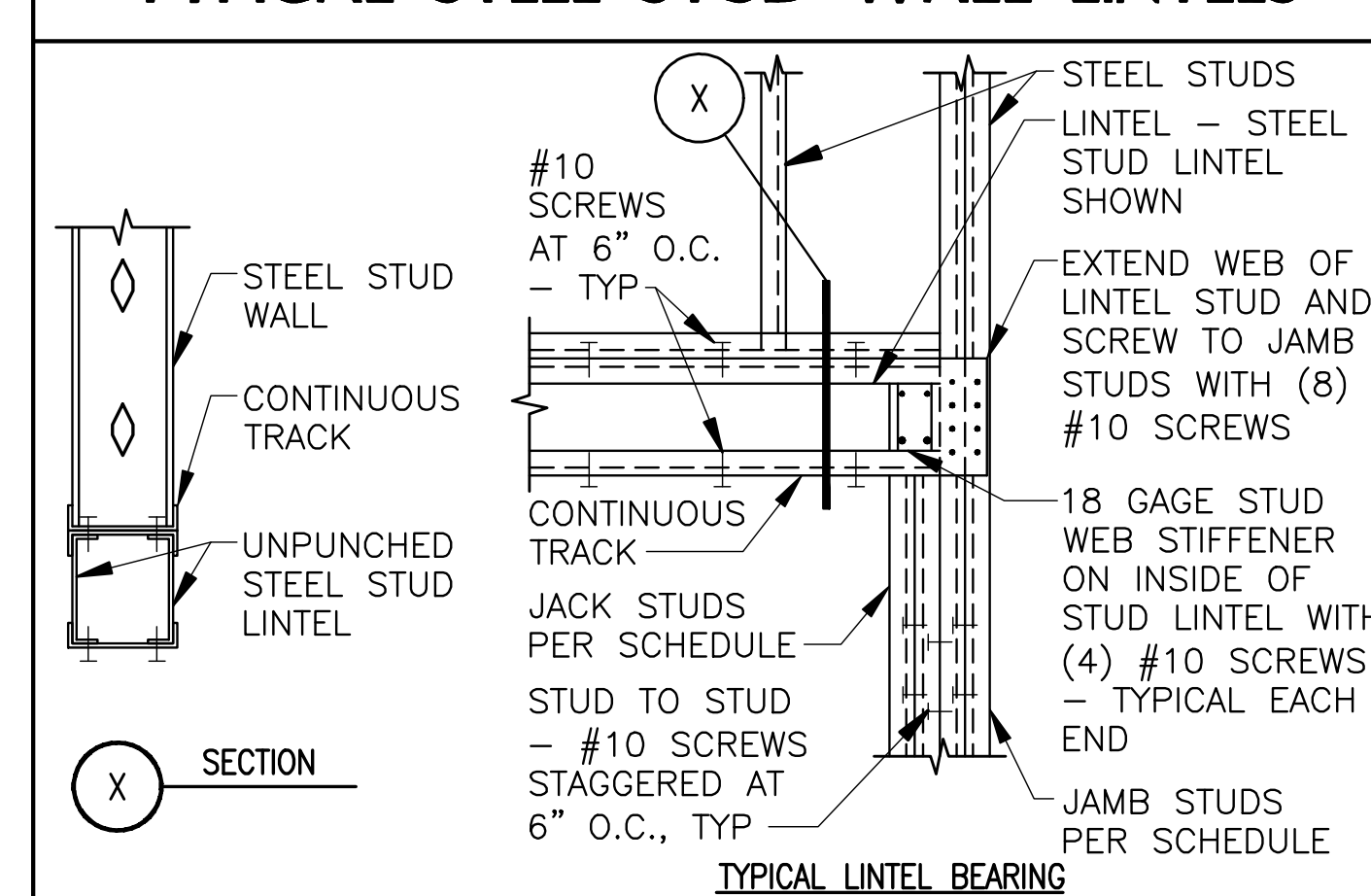
SCALE: 1/8"=1'-0"

NOTE: EVERY EFFORT HAS BEEN MADE TO DETERMINE AS-BUILT CONDITIONS PRIOR TO CONSTRUCTION. PRIOR TO CONSTRUCTION THE CONTRACTOR SHALL VERIFY AS-BUILT CONDITIONS AND NOTIFY THE ENGINEER OF RECORD IF IT IS DETERMINED THAT THE ACTUAL CONDITIONS VARY FROM WHAT IS NOTED AND REFERENCED ON THESE DRAWINGS.

### PENTHOUSE FRAMING PLAN

SCALE: 1/8"=1'-0"

### TYPICAL STEEL STUD WALL LINTELS



THIS SCHEDULE APPLIES UNLESS NOTED OTHERWISE ON FRAMING PLAN			
OPENING WIDTH	LINTEL	# OF JACK STUDS	# OF JAMB STUDS
0'-0" TO 6'-0"	(2) 18 GAGE 6" UNPUNCHED STEEL STUDS WITH 2" FLANGE (600S200-43)	1	3
6'-1" TO 8'-0"	(2) 18 GAGE 8" UNPUNCHED STEEL STUDS WITH 2" FLANGE (800S200-43)	1	4
8'-1" TO 12'-0"	(2) 16 GAGE 10" UNPUNCHED STEEL STUDS WITH 2" FLANGE (1000S200-54)	2	5
12'-1" TO 15'-0"	(3) 14 GAGE 12" UNPUNCHED STEEL STUDS WITH 2" FLANGE (1200S200-68)	2	6

### ROOF FRAMING PLAN NOTES

- 1 1/2" X 20 GAGE STEEL "B" DECK - TYPICAL AT ROOF'S U.N.O. FOR LAYUP AND ATTACHMENT, SEE STRUCTURAL NOTES AND TYPICAL DETAILS.
- EXISTING FRAMING TO REMAIN.
- CANTILEVER BEAM WHERE SHOWN ON PLANS.
- INDICATES STEEL STUD LINTEL PER TYPICAL SCHEDULE ON THIS SHEET.
- INDICATES BEAM TO COLUMN MOMENT FRAME CONNECTION - TYPICAL.
- CONTINUOUS 2" BUILDING JOINT.
- MECHANICAL UNITS - TYPICAL. THE WEIGHTS AND LOCATIONS OF MECHANICAL UNITS SHOWN ARE APPROXIMATE AND NOT UNITS MAY BE SHOWN ON THIS PLAN. FOR EXACT WEIGHTS, LOCATIONS, DUCT OPENINGS, ADDITIONAL UNITS, ETC., SEE MECHANICAL AND ARCHITECTURAL DRAWINGS. PROVIDE SUPPORT BELOW MECHANICAL UNITS AND PROVIDE FRAMING AROUND ROOF PENETRATIONS PER TYPICAL DETAILS.
- 4 1/2" NORMAL WEIGHT CONCRETE REINFORCED WITH #3 AT 16" O.C. EACH WAY OVER 1 1/2" X 18 GAGE COMPOSITE STEEL DECK (6" TOTAL THICKNESS) - TYPICAL AT MECHANICAL UNITS. SHORE STEEL DECK AT SIMPLE SPAN CONDITIONS FROM BELOW DURING AND FOR 7 DAYS MINIMUM AFTER CONCRETE PLACEMENT. FOR ATTACHMENT OF STEEL DECK SEE STRUCTURAL NOTES AND/OR TYPICAL DETAILS.
- BOOM BELOW PER ARCHITECTURAL DRAWINGS - ATTACH TO ROOF JOISTS PER TYPICAL DETAIL 117.
- SKYLIGHT, FOR EXACT SIZE AND LOCATION, SEE ARCHITECTURAL DRAWINGS. FOR FRAMING AT OPENINGS, SEE TYPICAL DETAIL.
- KALWALL INFILL PANELS PER ARCHITECTURAL DRAWINGS.
- 3" X 20 GAGE STEEL "N" DECK. FOR LAYUP AND ATTACHMENT, SEE STRUCTURAL NOTES AND TYPICAL DETAILS.
- EXAM LIGHT BELOW PER ARCHITECTURAL DRAWINGS - ATTACH TO ROOF JOISTS PER TYPICAL DETAIL 118.
- ROOF HATCH, FOR EXACT SIZE AND LOCATION, SEE ARCHITECTURAL DRAWINGS. FOR FRAMING AT OPENINGS, SEE TYPICAL DETAIL.
- 4 1/2" NORMAL WEIGHT CONCRETE REINFORCED WITH #3 AT 16" O.C. EACH WAY OVER 1 1/2" X 18 GAGE COMPOSITE STEEL DECK (6" MINIMUM TOTAL THICKNESS - TOTAL THICKNESS WILL VARY WITH ROOF SLOPE IN ORDER TO PROVIDE A "LEVEL" FLOOR) - TYPICAL AT PENTHOUSE. SHORE STEEL DECK FROM BELOW DURING AND FOR 7 DAYS MINIMUM AFTER CONCRETE PLACEMENT. FOR ATTACHMENT OF STEEL DECK SEE STRUCTURAL NOTES AND/OR TYPICAL DETAILS.
- 6" X 18 GAGE STEEL STUDS (600S162-43) AT 16" O.C. PER TYPICAL STEEL STUD FRAMING DETAIL.
- JIB CRANE PER ARCHITECTURAL DRAWINGS - ATTACH TO STEEL BEAM PER MANUFACTURER.
- EXISTING MASONRY WALL BELOW TO BE REMOVED.
- EXTEND NEW DECK TO CENTERLINE OF EXISTING JOIST (2-SPAN) - FIELD VERIFY CENTERLINE OF EXISTING JOIST IS LESS THAN 6'-8" FROM CENTERLINE OF NEW BEAM.
- INDICATES NEW MASONRY LINTEL PER DETAIL 539.
- WELD STEEL BEAM TO STEEL COLUMN WITH 3/16" FILLET WELD ALL AROUND - TYPICAL.

### GENERAL FRAMING NOTES

- SEE SHEETS 48-SS 1 AND 48-SS 2 FOR STRUCTURAL NOTES (MATERIALS, REQUIREMENTS, ETC.).
- COORDINATE WITH MECHANICAL AND PLUMBING DRAWINGS FOR ALL MECHANICAL UNITS AND FLOOR/ROOF OPENINGS.
- PROVIDE 1/2" CLEAR FROM BOTTOM OF ROOF FRAMING TO TOP OF NON-BEARING WALLS.
- SEE ARCHITECTURAL DRAWINGS FOR THE FOLLOWING: SIZE AND LOCATION OF ALL DOOR AND WINDOW OPENINGS. SIZE AND LOCATION OF ALL INTERIOR AND EXTERIOR NON-BEARING PARTITIONS. SIZE AND LOCATION OF ALL FLOOR AND ROOF DRAINS, SLOPES AND DEPRESSED AREAS; CHANGES IN LEVEL; CHAMFERS, CORNER FORMERS, GROOVES, BLOCKOUTS AND INSERTS; PAVING SITE WORK CURBS AND WALLS. DIMENSIONS NOT SHOWN ON STRUCTURAL DRAWINGS.

### HIGH ROOF FRAMING PLAN

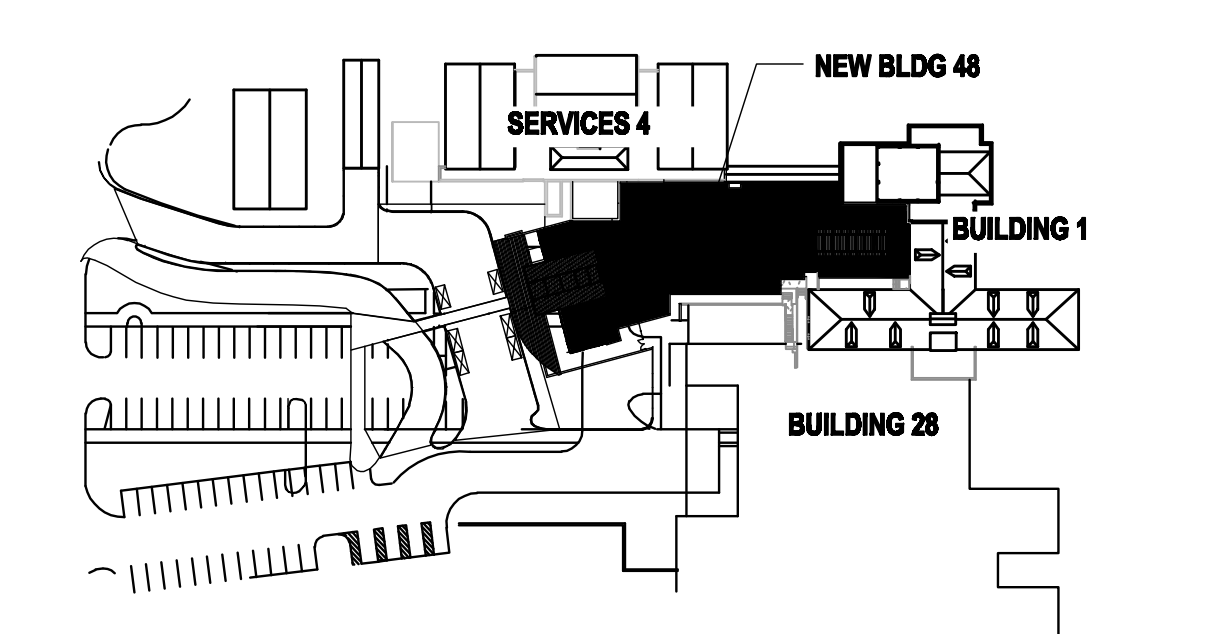
SCALE: 1/8"=1'-0"

### VESTIBULE ROOF FRAMING PLAN

SCALE: 1/8"=1'-0"

**RODERICK ENGINEERING LLC.**  
6839 E. REMBRANT AVE., SUITE 124  
MESA, AZ 85212  
PH 480-926-6333  
FAX 480-926-3999  
B.E. JOB NO. 10105

7/15/2011



Department of Veterans Affairs

ARCHITECT OF RECORD:

**SBL Architecture + Planning**  
1001 North Avenue Way #105, Tucson, Arizona 85711  
T: 520.520.0255 E: shbl@sabl.biz

**EMERGENCY DEPARTMENT**

AMARILLO VA HEALTH CARE SYSTEM  
AMARILLO, TEXAS

Approved: VA Area Proj. Mgr.

V.A. PROJECT NO: VA288-P-0108  
SBL PROJECT NO: 0110.00.0  
DRAWN BY: JG  
CHECKED BY: GSB  
DATE: 07/15/2011

△	Date	Revision

Approved: Med. Ctr. Director

Approved: Asst. Admin Engineering Service

Approved: Asst. VA Medical Director

Approved: Chief of Facilities

Approved: Chief of Engineering

Approved: Chief of Projects

**48-SS7**

CAD FILE #