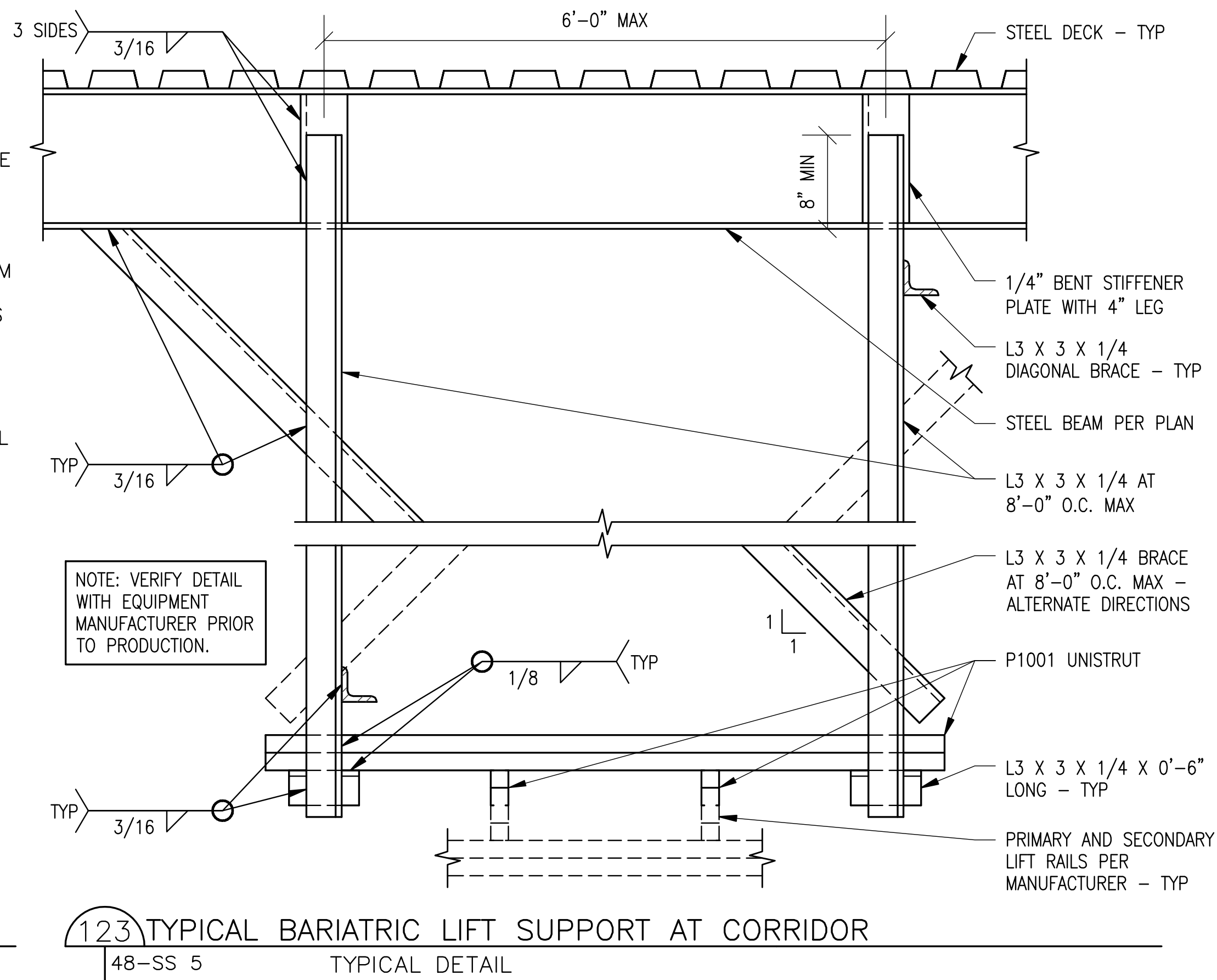
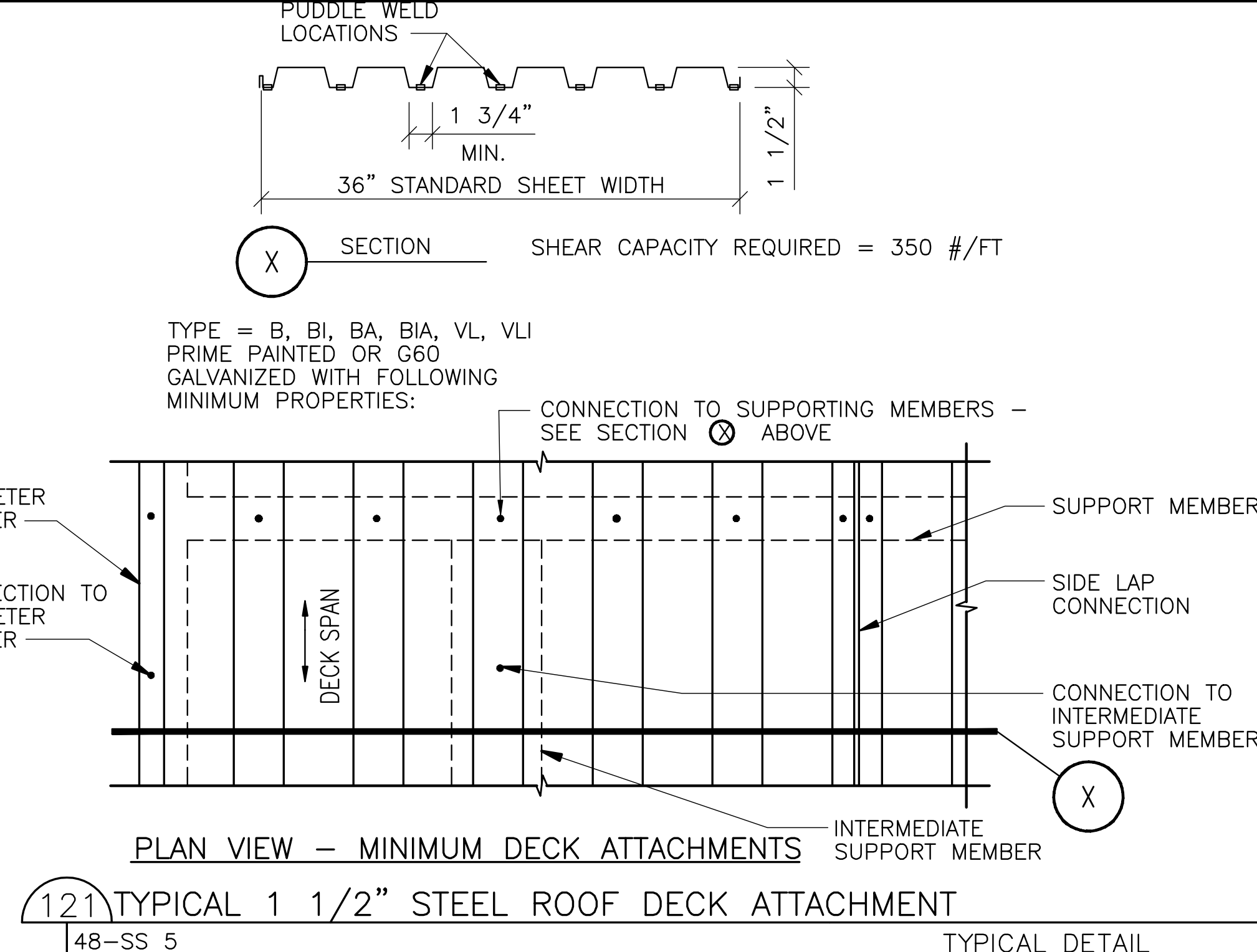
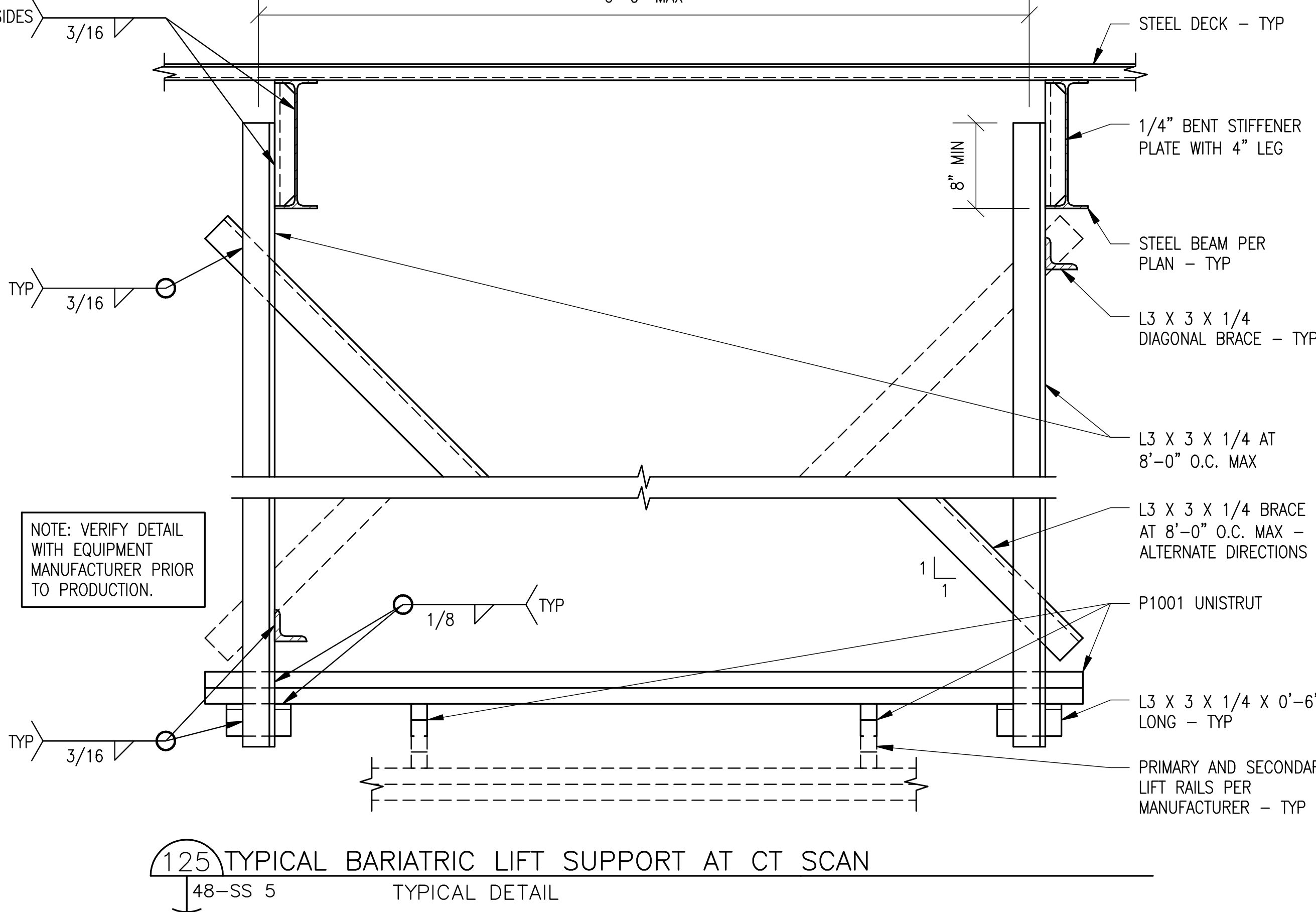
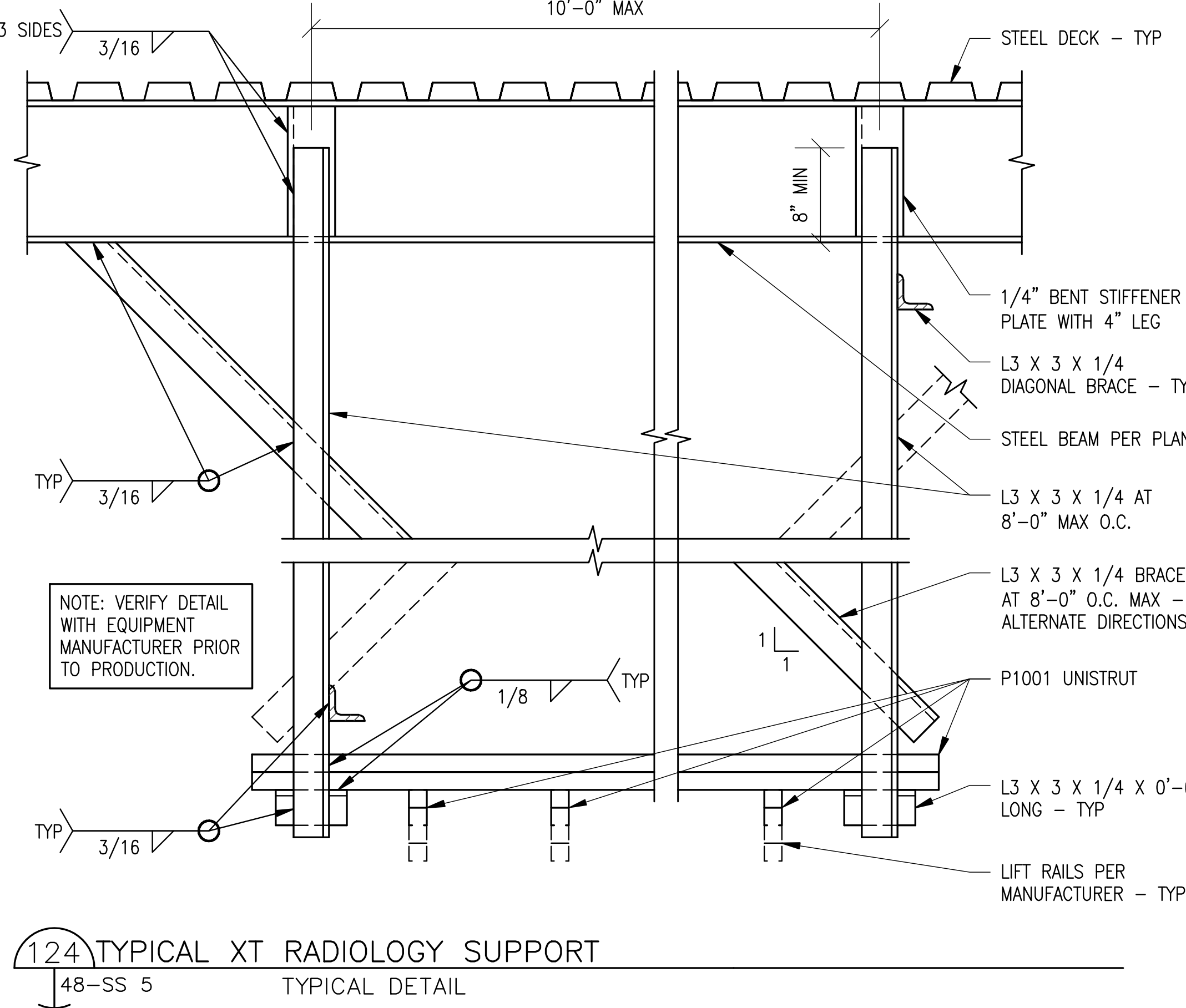
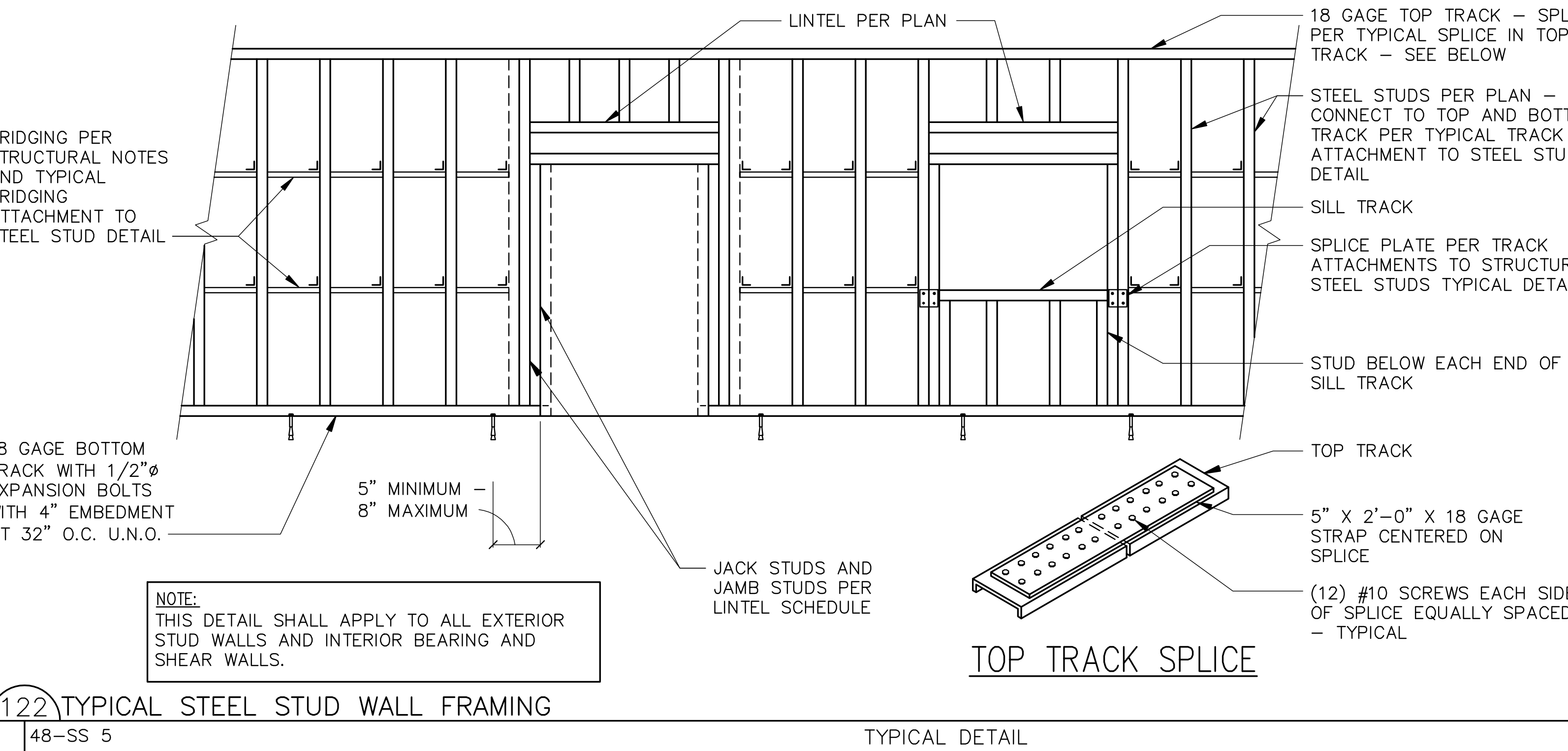
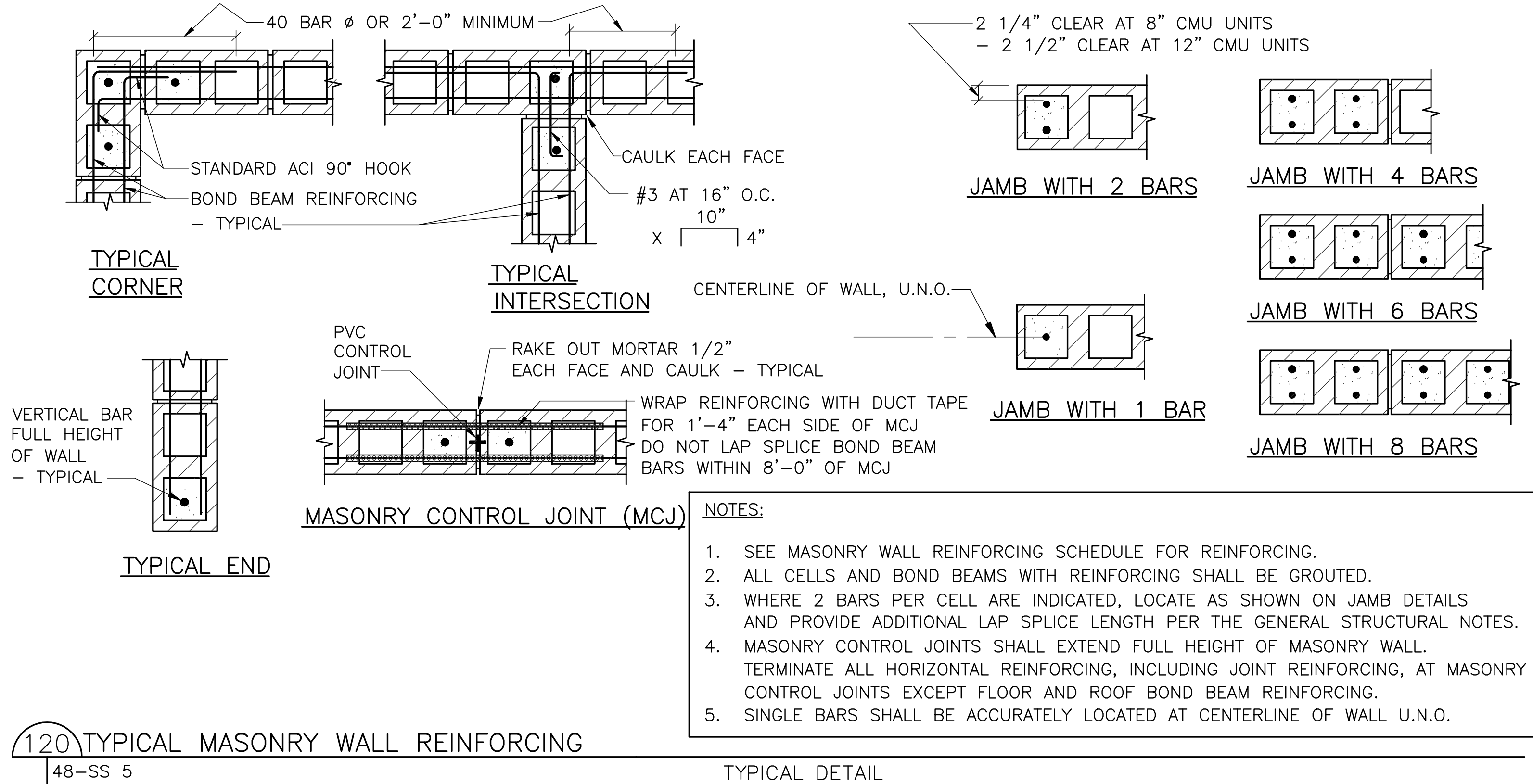
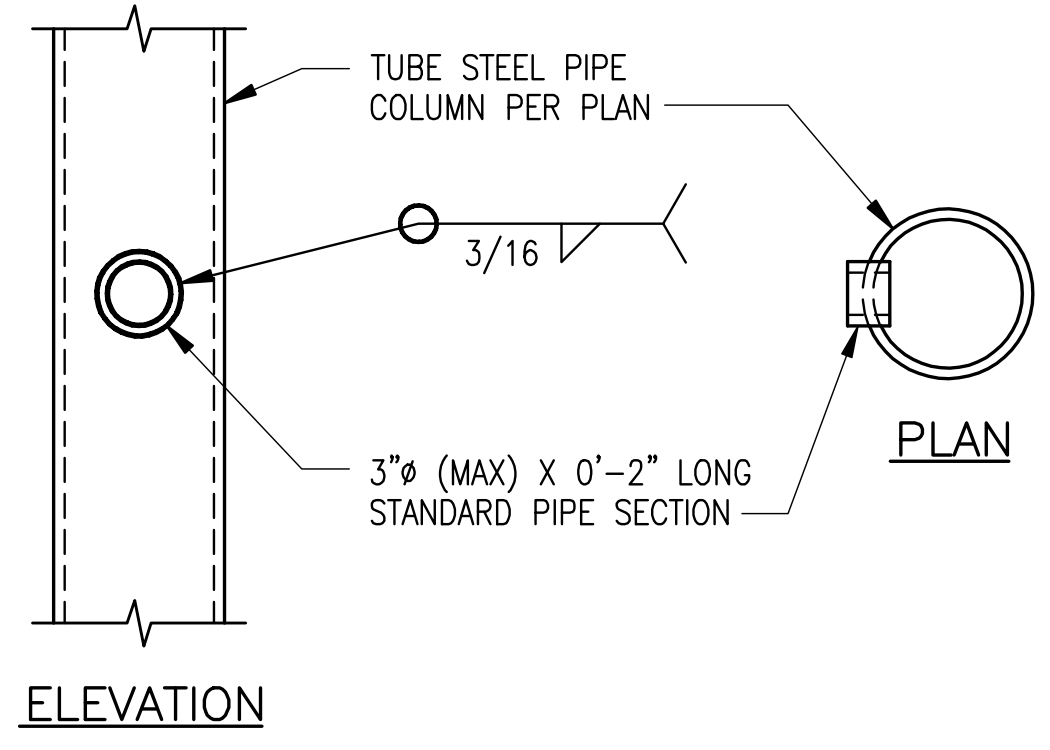


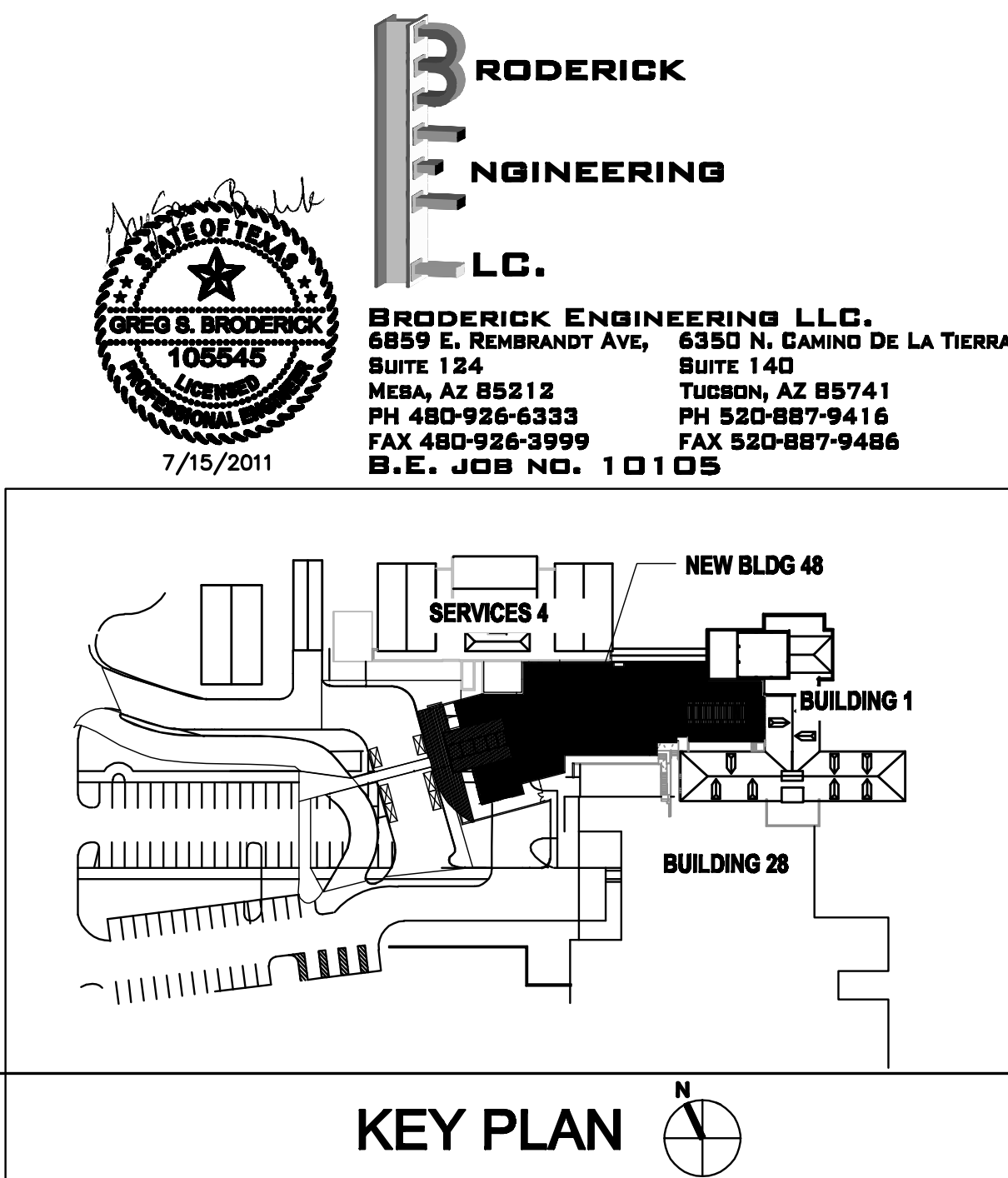
three inches = one foot  
one and one-half inch = one foot  
one inch = one foot  
three-quarters inch = one foot  
one-half inch = one foot  
three-eighths inch = one foot  
one-quarter inch = one foot  
one-eighth inch = one foot



- NOTES:
1. MAXIMUM DECK SPAN = 6'-8" CENTER TO CENTER (THREE OR MORE CONTINUOUS SPANS). USE HEAVIER GAGE WHERE DECK REQUIRED TO SIMPLE SPAN.
  2. PROVIDE (7) 5/8" PUDDLE WELDS PER SHEET TO ALL SUPPORTS PERPENDICULAR TO DECK FLUTES.
  3. PROVIDE 5/8" PUDDLE WELDS AT 12" O.C. TO ALL STRUTS PARALLEL TO DECK FLUTES AND TO BRACED FRAME BEAMS. PROVIDE 5/8" PUDDLE WELDS AT 12" O.C. WHERE DECK ORIENTATION CHANGES AND OTHER SUPPORTS PARALLEL TO DECK FLUTES.
  4. CONNECT DECK SEAMS WITH BUTTON PUNCHES AT 12" O.C.
  5. DECK TYPE MUST STRICTLY MEET CRITERIA LISTED ABOVE, INCLUDING I.C.B.O. RESEARCH REPORT ALLOWABLE SHEAR LOADS. SUBMIT DECK INFORMATION TO ENGINEER PRIOR TO BEGINNING SHOP DRAWINGS.
  6. REINFORCE MISCELLANEOUS DECK OPENING PER TYPICAL DETAILS.



126 TYPICAL UTILITY OPENING IN TUBE STEEL PIPE COLUMN  
48-SS 5 TYPICAL DETAIL



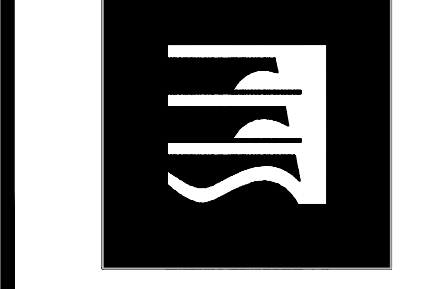
TYPICAL DETAILS

KEY PLAN



ARCHITECT OF RECORD:

**SBBL Architecture + Planning**  
1001 North Avenue Way #105 Tucson, Arizona 85711  
t: 520.820.0255 e: sbbl@sbbh.biz



**EMERGENCY DEPARTMENT**  
**AMARILLO VA HEALTH CARE SYSTEM**  
**AMARILLO, TEXAS**

Approved: VA Area Proj. Mgr.

V.A. PROJECT NO: VA288-P-0188  
SBBL PROJECT NO: 0110.00.0  
DRAWN BY: JG  
CHECKED BY: G8B  
DATE: 07/15/2011

Δ	Date	Revision

Approved: Med. Ctr. Director

Approved: Asst. Admin Engineering Service

Approved: Asst. VA Medical Director

Approved: Chief of Facilities

Approved: Chief of Engineering

Approved: Chief of Projects

**48-SS5**

CAD FILE #

**RODERICK ENGINEERING LLC.**  
6839 E. REMBRANT AVE. SUITE 124  
MESA, AZ 85212  
PH 480-926-6333  
FAX 480-926-3999  
B.E. JOB NO. 10105  
7/15/2011