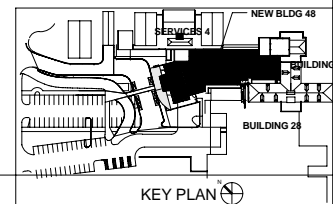
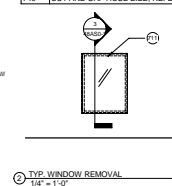
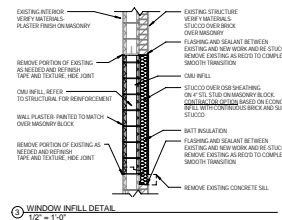
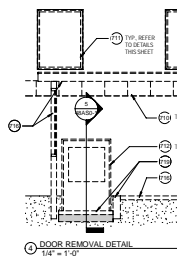
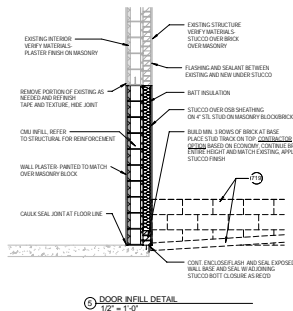


LETTERS "A" THROUGH "L" INDICATE PHOTOS OF AREA ON SHEET AS0.3

PHOTO LEGEND
1/4" = 1'-0"

Key Value	Keynote Text
ARCHITECTURAL SITE DEMOLITION KEYNOTES	
KEYNOTE GROUPS	
701	EXISTING WALL TO REMAIN
706	MATURE LAWN AREA TO BE EXCAVATED
707	REMOVE AND RELOCATE OXYGEN GAS CONNECTION, PATCH AND REPAIR CONCRETE PAD. REFER TO CIVIL DRAWINGS FOR RELOCATION.
708	RELOCATE HAZMAT CONTAINER PER VA DIRECTION TO TEMPORARY LOCATION, PLACE IN FINAL POSITION AT PROJECT COMPLETION.
709	REMOVE EXISTING PORCH/OUT ACCENTS/STUCCO WALL PHOTOGRAPH BEYOND THE WALL SURFACE AND REPAIR TO MATCH.
710	REMOVE EXISTING EXTERIOR WALL DECORATIVE BRICK, TO INCLUDE AROUND WINDOWS (1ST AND 2ND LEVELS) AND DOORS AND REPAIR TO MATCH TYPICAL.
711	REMOVE EXISTING WINDOWS, AND SEAL UP OPENING TO MATCH EXISTING INTERIOR AND EXTERIOR FINISHES-ALL 1ST AND 2ND FLOOR.
712	REMOVE EXISTING DOOR, FRAME & ASSOCIATED HARDWARE, AND SEAL OPENING TO MATCH EXISTING INTERIOR AND EXTERIOR FINISHES.
713	REMOVE EXISTING CONCRETE PATIOSIDEWALK.
714	REMOVE EXISTING SIDEWALK.
715	REMOVE EXISTING TREE.
716	REMOVE EXISTING ENTIRE SMOKING ROOM/INSIDE AND OUT, INCLUDING FIXTURES, POWER/PLUMBING AND CANOPY STRUCTURE COMPLETELY.
717	REMOVE EXISTING LIGHTING FIXTURE.
718	REMOVE EXISTING 15'-0" HIGH MASONRY AND STUCCO SITE WALL.
719	REMOVE EXISTING RAMP, RAILINGS AND MASONRY.
722	REMOVE EXISTING CONCRETE STAIRS AND RAILING TO RECONFIGURE, REFER TO NEW SITE PLAN.
723	REVISE DOWNSPOUT, REFER TO PLUMBING DRAWINGS, PATCH, REPAIR AND PAINT TO MATCH AS REQUIRED.
724	REVISED FOR ADA PARKING, REFER TO DRAWING 48AS1-0.
725	REMOVE WINDOW AND CUT ROUGH OPENING IN WALL FOR NEW CASED OPENING, REFER TO FLOOR PLAN 48AS2-1 FOR EXACT LOCATION, DIMENSIONS ON 48AS2-2.
726	REMOVE EXISTING PLANTING/SHUB.
732	REMOVE EXISTING STONE CLAD SITE WALL AS REQUIRED, COORDINATE WITH NEW FLOOR PLAN 48AS2-1. FINISH OPENING WILL BE 9'-0" CLEAR.
733	REMOVE PORTION OF EXISTING RAILING AS REQUIRED, FINISH CLEARANCE WILL BE 11'-8" H" PER 48AS2-1.
734	REMOVE/RELOCATE OS VALVE, REFER TO CIVIL DRAWINGS FOR FULL DIRECTION.
735	REMOVE/RELOCATE OXYGEN GAS SENSOR, PATCH AND REPAIR WALL AS REQUIRED, REFER TO CIVIL DRAWINGS FOR RELOCATION.
736	DEMO WALL IN PREPARATION TO EXTEND SPACE OVER TO STAIR WELL WALL.
737	PARTIALLY REMOVE GUTTER BELOW COMM ROOM ROOF TO RECONNECT TO DRAIN ONTO NEW EXTENDED ROOF.
738	REMOVE AND RELOCATE EQUIPMENT AND PAD PER EACH DISCIPLINE'S RELOCATION DRAWINGS.
739	REMOVE DRAIN 8" BELOW GRADE, PACK PIPE WITH CONCRETE AND COVER WITH NEW SLAB ADDITION-REFER TO ARCHITECTURAL NEW FLOOR PLAN DRAWING.
740	CUT AND CAP HOSE BIBB, REFER TO PLUMBING DRAWINGS.



ARCHITECTURAL DEMOLITION PLAN

Δ	Date	Revision